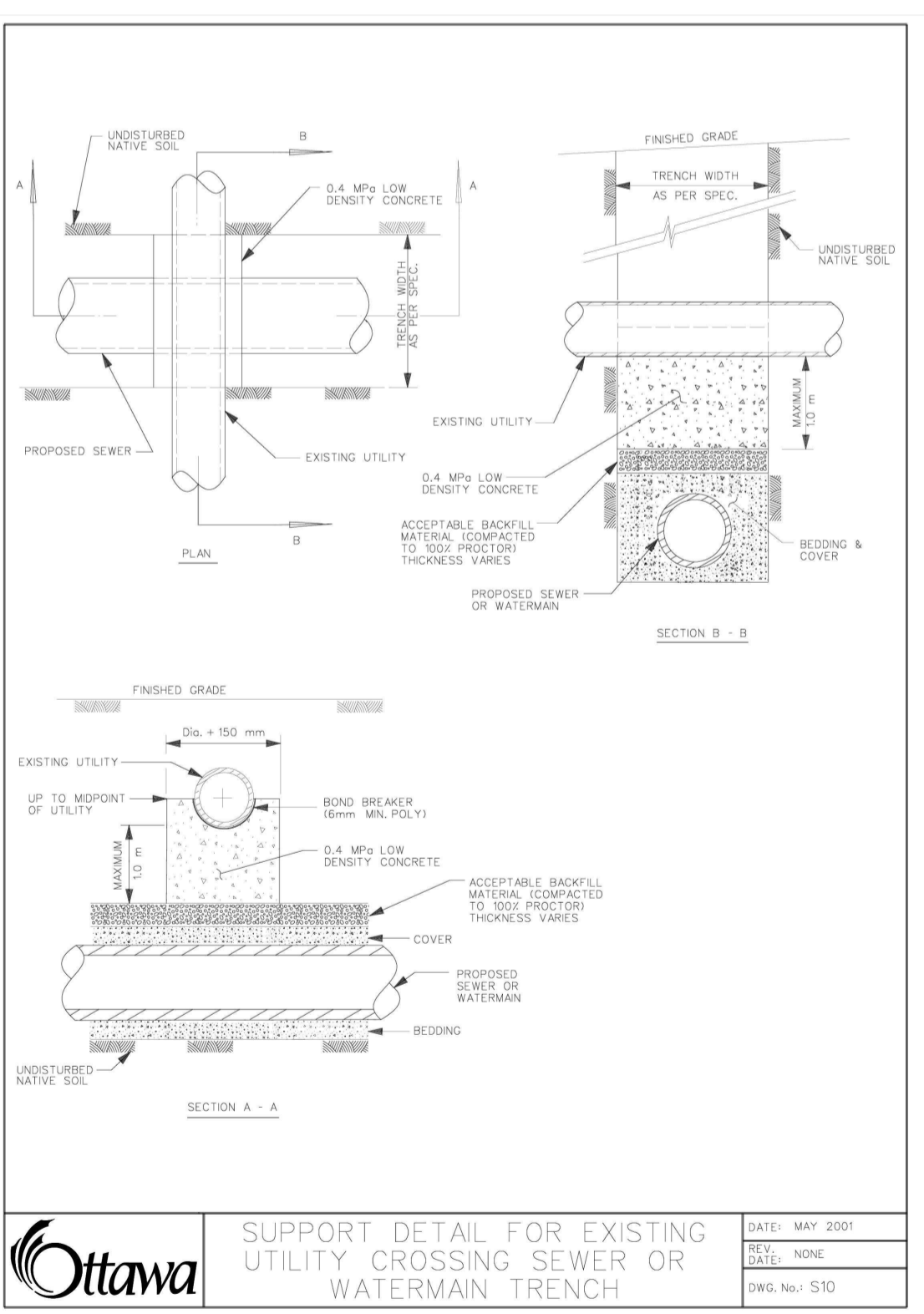
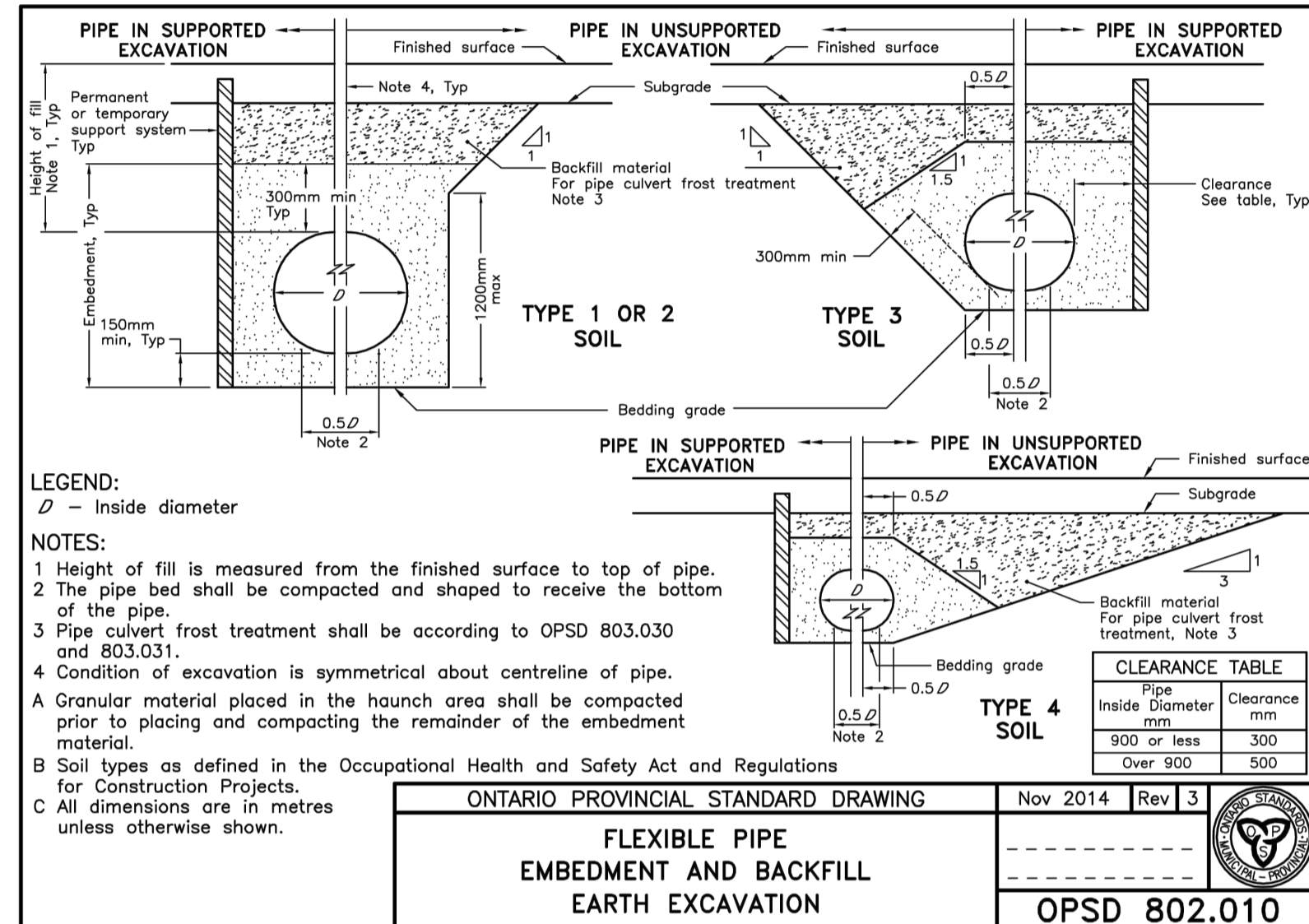
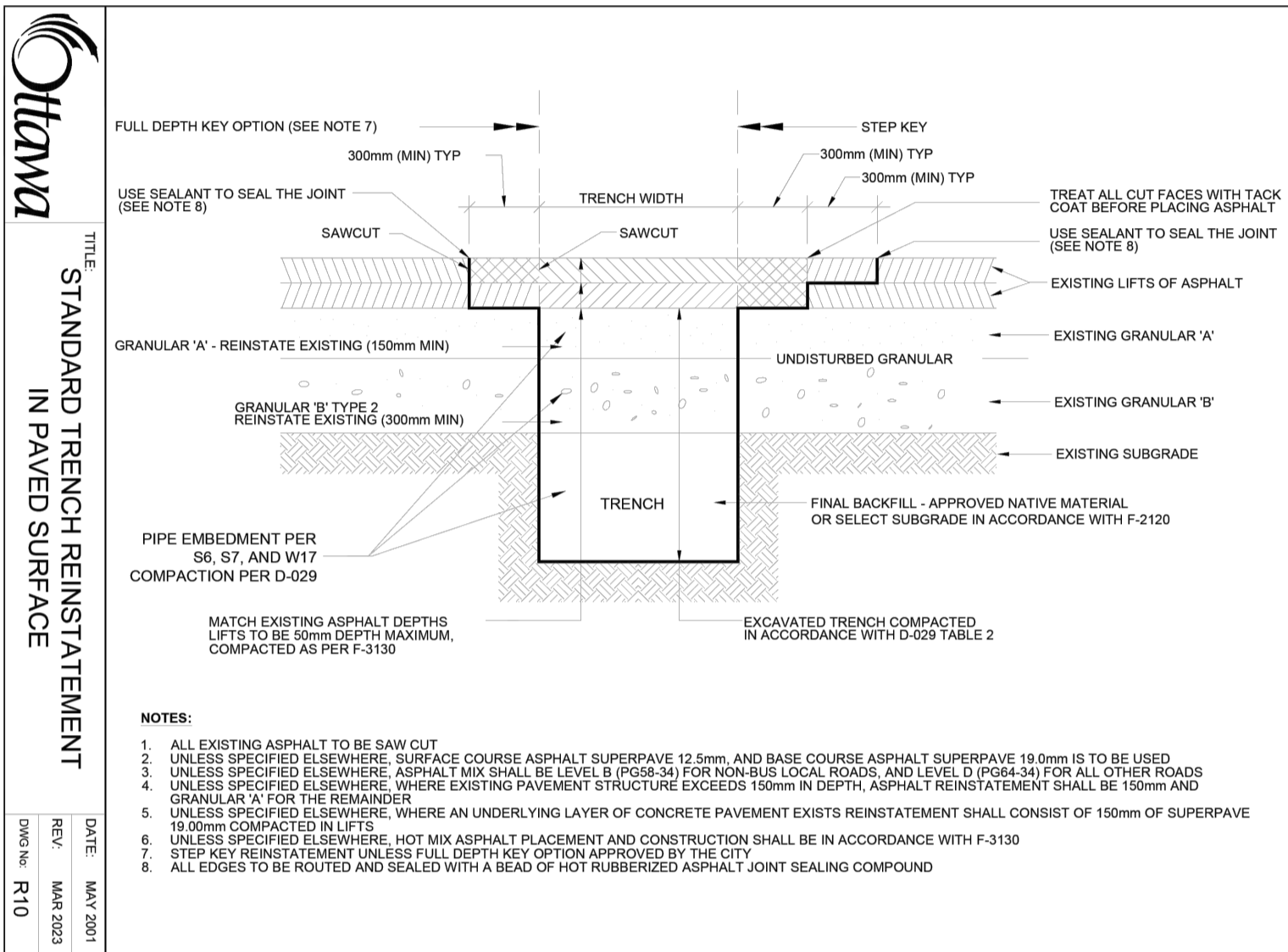
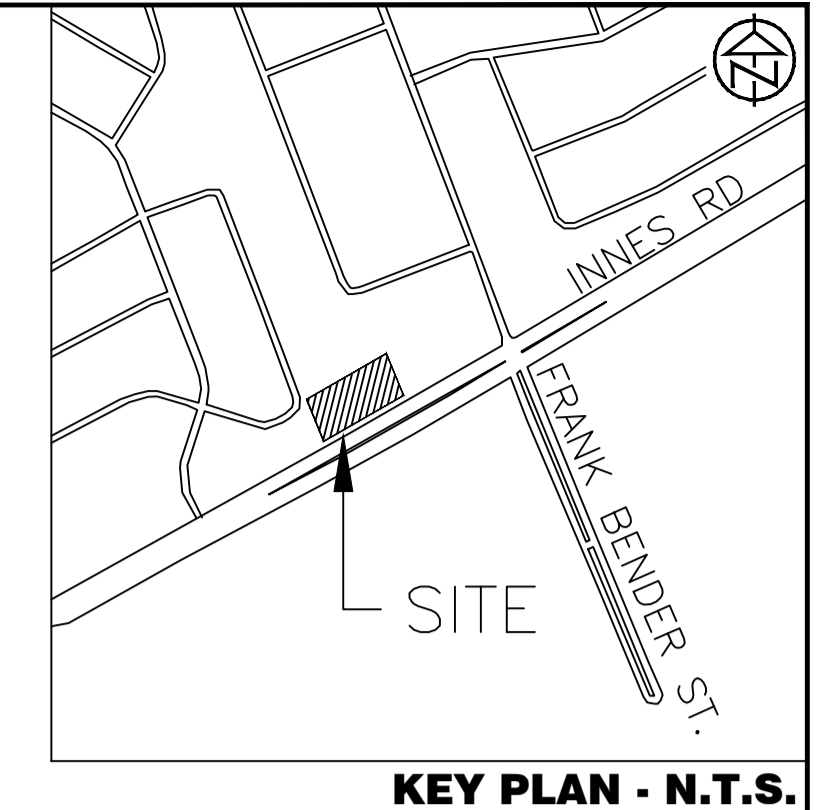


MANHOLE TABLE		
STORM		
MH Number	Size	Cover
STM MH01	1200mm	S24.1
STM MH02	1200mm	S24.1
CBMH03	1200mm	S28.1
CBMH04	1200mm	S28.1
CBMH05	1200mm	S28.1
CBMH06	1200mm	S28.1
CBMH07	1200mm	S28.1
CBMH08	1200mm	S28.1
LCB08 TO LCB14		S30 AND S31
SANITARY		
MH Number	Size	Cover
MHA	1200mm	S24
MHB	1200mm	S24



DISCLAIMER AND COPYRIGHT  
 CONTRACTOR MUST VERIFY ALL DIMENSIONS AND BE RESPONSIBLE FOR SAME. ANY DISCREPANCIES MUST BE REPORTED TO THE ENGINEER BEFORE COMMENCING WORK. DRAWINGS ARE NOT TO BE SCALED.  
 TATHAM ENGINEERING LIMITED CLAIMS COPYRIGHT TO THIS DRAWING WHICH MAY NOT BE USED FOR ANY PURPOSE OTHER THAN THAT PROVIDED IN THE CONTRACT WITHOUT THE EXPRESS CONSENT OF TATHAM ENGINEERING LIMITED.

BENCHMARK1: FIRE HYDRANT LOCATED ON SOUTH SIDE OF INNES ROAD, SOUTH OF SITE. TOP OF SPINDLE ELEV=92.46  
 BENCHMARK2: FIRE HYDRANT LOCATED ON SOUTH SIDE OF INNES ROAD, SOUTHEAST OF SITE(90.0m EAST FROM BENCHMARK 1) TOP OF SPINDLE ELEV=92.13

No.	REVISION DESCRIPTION	DATE	ENGINEER STAMP
3.	RE-ISSUED FOR SPA	JUL. 2023	
4.	RE-ISSUED FOR SPA	AUG. 2024	
5.	RE-ISSUED FOR SPA	NOV. 2024	
6.	RE-ISSUED FOR SPA	DEC. 2024	
7.	RE-ISSUED FOR SPA	JAN. 2025	



**BRIDOR DEVELOPMENTS**  
**3817-3843 INNES ROAD**  
**CITY OF OTTAWA**

SITE SERVICING PLAN

**TATHAM ENGINEERING**

DESIGN: HY/GC FILE: 522676 DWG: **C301**  
 DRAWN: HY DATE: OCT 2022  
 CHECK: GC SCALE: 1:250

007-12-20-0164