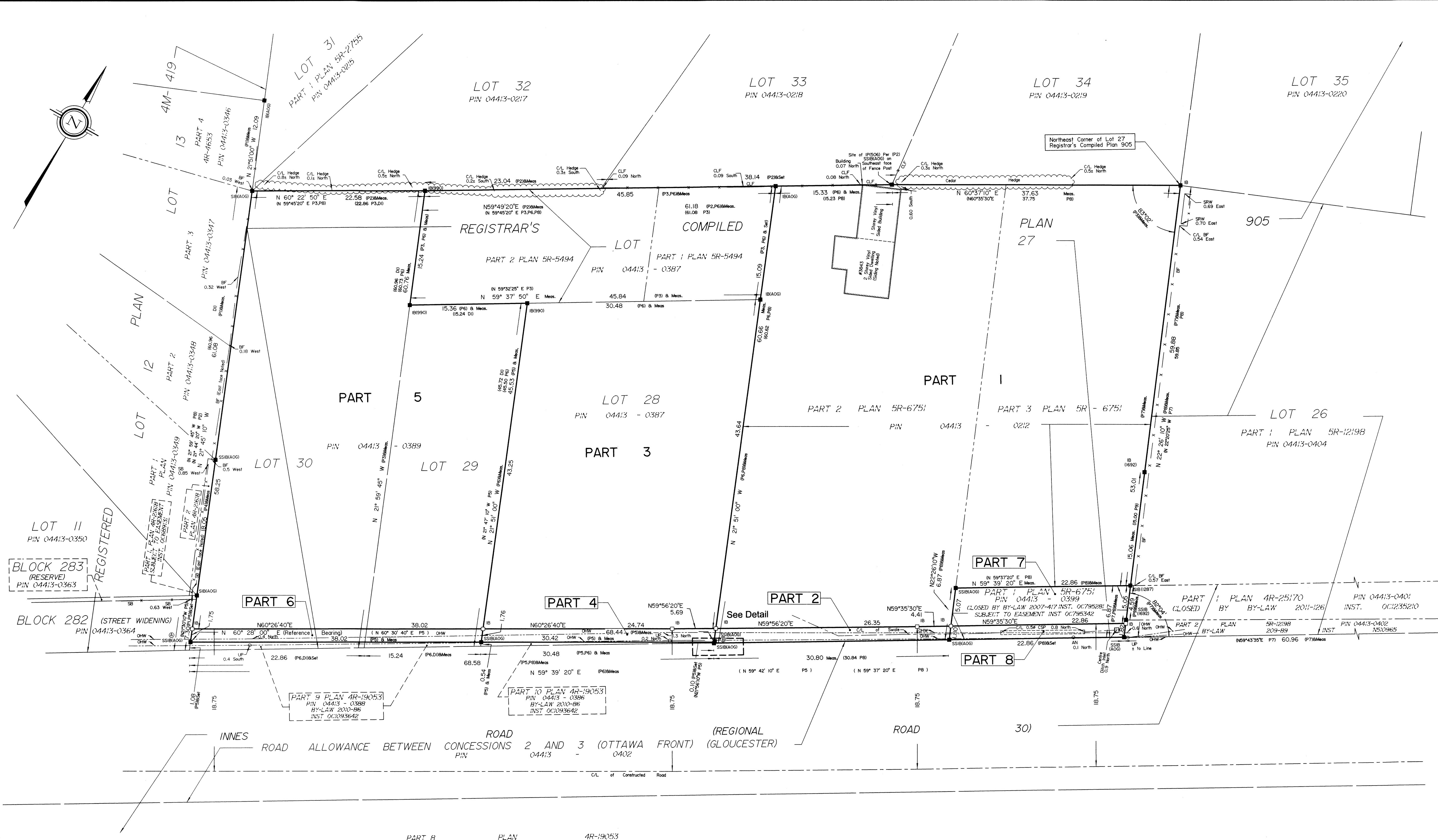


SCHEDULE			
PART	LOT	PLAN	PIN
1	PART OF LOT 27		ALL OF 04413-0212
2	PART OF 27 & 28		ALL OF 04413-0387
3	PART OF 28		ALL OF 04413-0389
4	PART OF LOTS 29 AND 30	905	ALL OF 04413-0389
5	PART OF LOT 27		ALL OF 04413-0399

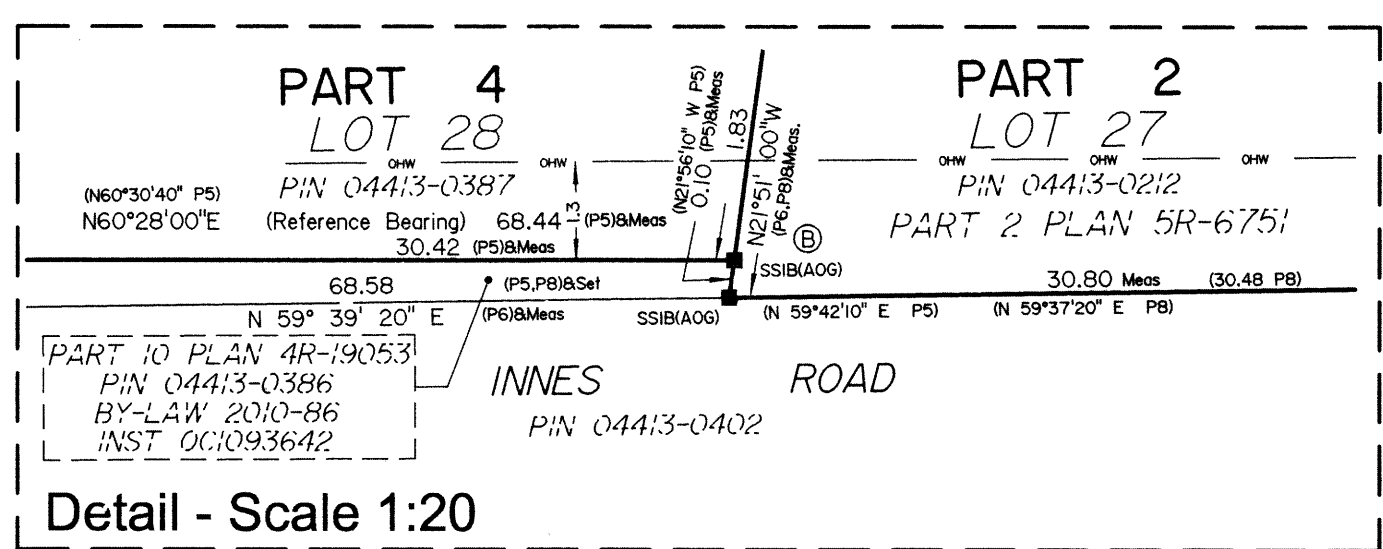
Parts 7 and 8 are subject to Easement Inst. OC795342.  
**PLAN OF SURVEY OF LOTS 27 AND PART OF LOTS 28, 29 AND 30 REGISTRAR'S COMPILED PLAN 905 CITY OF OTTAWA**

Surveyed by Annis, O'Sullivan, Vollebek Ltd.  
 Scale 1:250  
 10 7.5 5.0 2.5 0 5 10 Metres

Metric  
 DISTANCES AND COORDINATES SHOWN ON THIS PLAN ARE IN METRES AND CAN BE CONVERTED TO FEET BY DIVIDING BY 0.3048.



- Notes & Legend**
- Denotes Survey Monument Planted
  - Survey Monument Found
  - SIB Standard Iron Bar
  - SSIB Short Standard Iron Bar
  - IB Iron Bar
  - IBR Round Iron Bar
  - IP Iron Pipe
  - (WT) Witness
  - (AOG) Annis, O'Sullivan, Vollebek Ltd.
  - Meas. Measured
  - (P1) Registered Plan 4M-419
  - (P2) (AOG) Plan dated May 29, 2002
  - (P3) Plan 5R-5494
  - (P4) Plan 4R-21618
  - (P5) Plan 4R-19053
  - (P6) (990) Plan dated July 22, 2003
  - (P7) Plan 5R-12198
  - (P8) Plan 5R-6751
  - (P9) Plan 4R-25170
  - (D1) Instrument GL83596
  - CSP Corrugated Steel Pipe
  - UP Utility Pole
  - AN Anchor Pole
  - CHW Overhead Wires
  - BF Board Fence
  - CLF Chain Link Fence
  - CL Centreline
  - SB Sound Barrier (Wooden Panel and Metal Post)
  - SRW Stone Retaining Wall



**Surveyor's Certificate**  
 I CERTIFY THAT:  
 1. This survey and plan are correct and in accordance with the Surveys Act, the Surveyors Act and the Land Titles Act and the regulations made under them.  
 2. The survey was completed on the 17th day of August, 2016.  
 Date: Sept 8, 2016  
 E.H. Herweyer  
 Ontario Land Surveyor

Distances shown on this plan are ground distances and can be converted to grid distances by multiplying by the combined scale factor of 0.999964.  
 Bearings are grid, derived from Can-Net 2016 Real Time Network GPS observations referenced to specified Control Points 01919680184 and 019198434761 and are referenced to Specified Control Points 01919680184 and 019198434761, MTM Zone 9 (76°30' West Longitude) NAD-83 (original).  
 For bearing comparisons, a rotation of 0°03'15" counter-clockwise was applied to bearings on plan (P1).  
 Coordinates are derived from Can-Net 2016 Real Time Network GPS observations referenced to Specified Control Points 01919680184 and 019198434761, MTM Zone 9 (76°30' West Longitude) NAD-83 (original).  
 Coordinate values are to urban accuracy in accordance with O. Reg. 216/10.  
 .01919680184 Northing 5040610.16 Easting 384736.56  
 .019198434761 Northing 5036178.12 Easting 372438.11  
 .Point A Northing 5035179.31 Easting 381951.21  
 .Point B Northing 5035213.05 Easting 382010.75  
 Caution: Coordinates cannot, in themselves, be used to re-establish corners or boundaries shown on this plan.