

BRIDOR DEVELOPMENT NEW APARTMENTS LANDSCAPE PLAN 3817-3843 INNES RD

ORLEANS, ONTARIO
ISSUED FOR COORDINATION
OCTOBER- 23 - 2020

DRAWING INDEX

LAYOUT PLAN L1-01
DIMENSION PLAN L2-01
DIMENSION PLAN L2-02
PLANTING PLAN L3-01
DETAILS L4-01
DETAILS L4-02



LASHLEY
+ASSOCIATES
LANDSCAPE ARCHITECTURE
AND SITE ENGINEERING
OTTAWA - MONTREAL

LASHLEY + ASSOCIATES
LANDSCAPE ARCHITECTURE
& SITE ENGINEERING

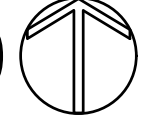
202-950 GLADSTONE AVENUE
OTTAWA, ON K1Y 3E6

T 613 233 8579

F 613 233 4051

W LashleyLA.com



SCALE 1:1000 



GENERAL NOTES
 CONTRACTOR MUST CHECK & VERIFY ALL DIMENSIONS ON THE JOB.
 DO NOT SCALE DRAWINGS.
 ALL DRAWINGS, SPECIFICATIONS AND RELATED DOCUMENTS ARE THE COPYRIGHT PROPERTY OF THE ARCHITECT AND MUST BE RETURNED UPON REQUEST. REPRODUCTION OF DRAWINGS WITHOUT THE WRITTEN PERMISSION OF THE ARCHITECT.
 THIS DRAWING IS NOT TO BE USED FOR CONSTRUCTION UNTIL SIGNED BY THE ARCHITECT.

- LEGEND:**
- PROPERTY LINE
 - X- FENCE
 - ▣ PRIVACY FENCE
 - ▨ CONCRETE
 - ▩ PAVER TYPE 1-A
 - ▧ PAVER TYPE 1-B
 - ▦ PAVER TYPE 2
 - ▤ BULBS
 - ▣ SOD
 - ⊕ DECIDUOUS TREE
 - ⊗ CONIFEROUS TREE
 - ⊙ SHRUBS
 - ⊘ GRASSES/ PERENNIALS
 - ▭ BENCH
 - ⊙ CENTER SEATING STONE
 - GARBAGE/ RECYCLING
 - PLANTER

ISSUED

No.	Date	Description
1	2020-10-23	ISSUED FOR COORDINATION

P² concepts
 7390 RIDGEWOOD AVE., SUITE 201
 OTTAWA, ONTARIO, K1V 6M6

LASHLEY + ASSOCIATES
 LANDSCAPE ARCHITECTURE AND SITE ENGINEERING
 202-850 GLADSTONE AVENUE
 OTTAWA, ON K1Y 3E6
 T 613 238 8879
 F 613 238 4061
 W LashleyA.com
 E Mail@LashleyA.com

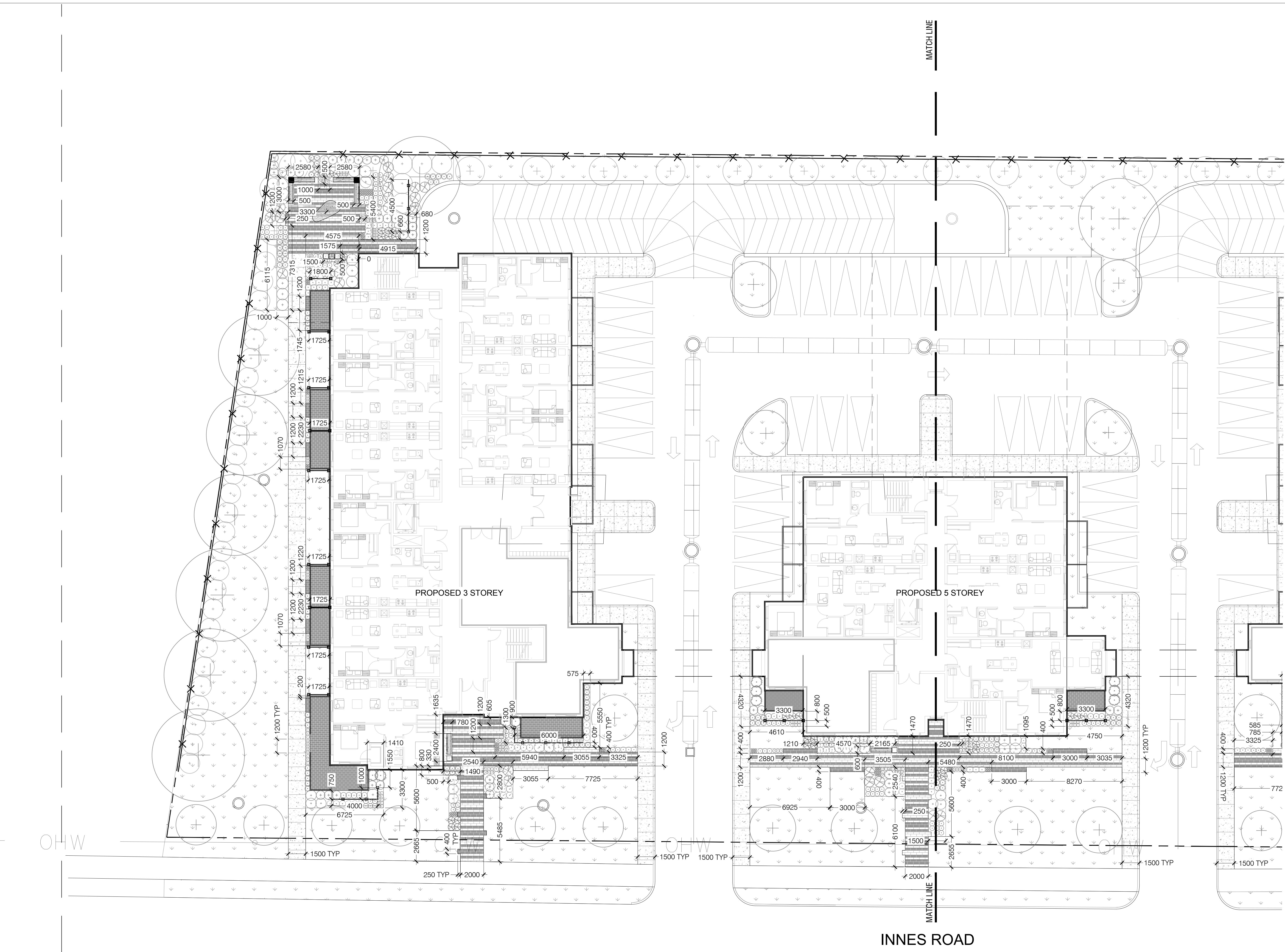
BRIDOR DEVELOPMENT NEW APARTMENTS

3817-3843 INNES RD
 ORLEANS, OTTAWA

DIMENSION PLAN

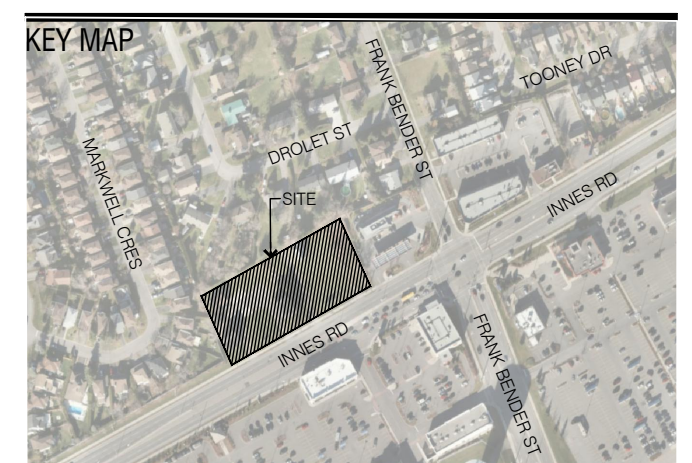
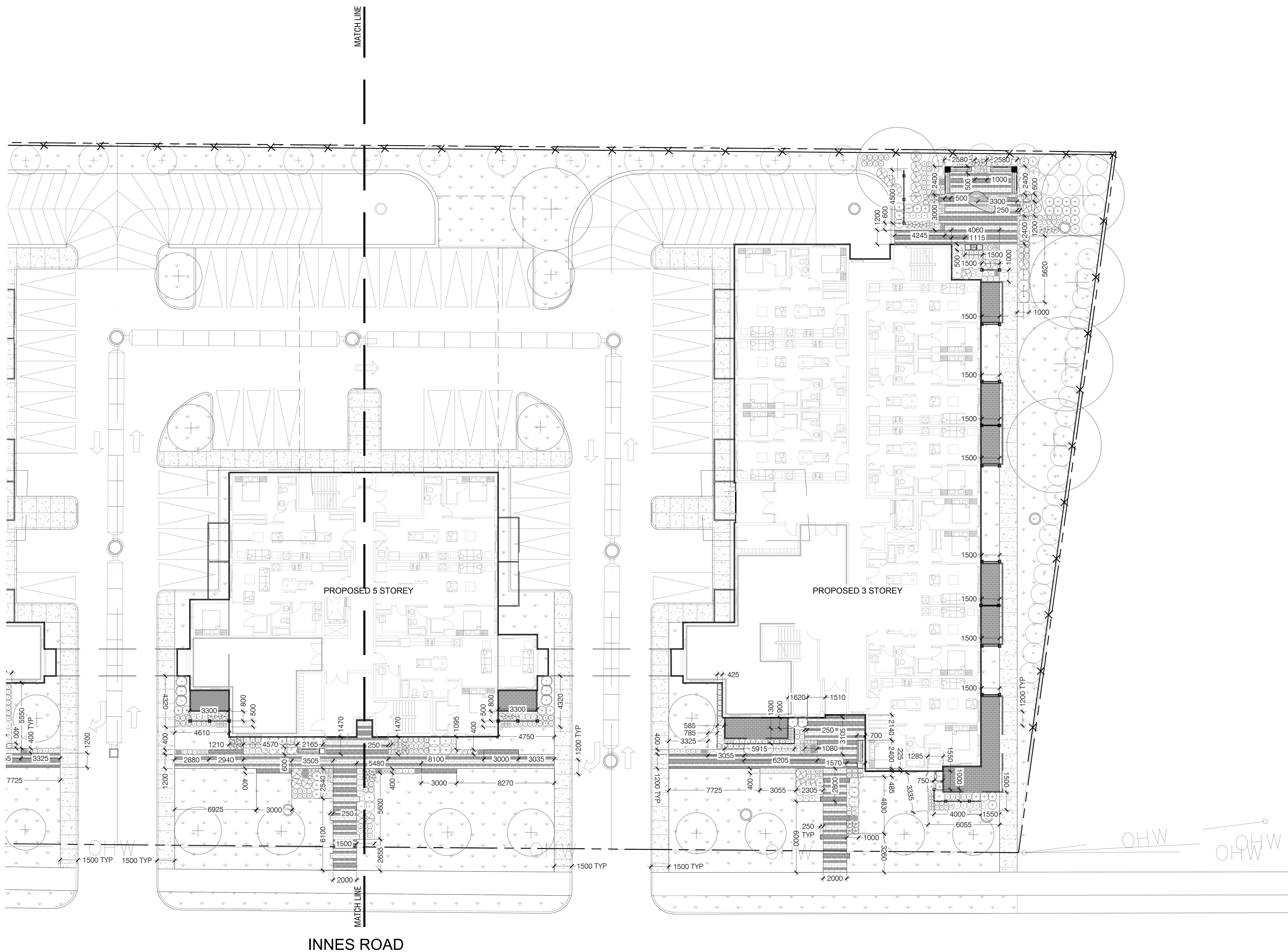
Scale: 1:150
 Project No: 20778-1
 Date: 2020-10-23

L2-01



1 DIMENSION PLAN
 L2-01

GRAPHIC SCALE 1:150
 0 1 2 3 4 5 6 7m



GENERAL NOTES
 CONTRACTOR MUST CHECK & VERIFY ALL DIMENSIONS ON THE JOB.
 DO NOT SCALE DRAWINGS.
 ALL DRAWINGS, SPECIFICATIONS AND RELATED DOCUMENTS ARE THE COPYRIGHT PROPERTY OF THE ARCHITECT AND MUST BE RETURNED UPON REQUEST. REPRODUCTION OF DRAWINGS, SPECIFICATIONS AND RELATED DOCUMENTS IN PART OR IN WHOLE IS FORBIDDEN WITHOUT THE WRITTEN PERMISSION OF THE ARCHITECT.
 THIS DRAWING IS NOT TO BE USED FOR CONSTRUCTION UNTIL SIGNED BY THE ARCHITECT.

- LEGEND:**
- PROPERTY LINE
 - X- FENCE
 - ▣ PRIVACY FENCE
 - CONCRETE
 - PAVER TYPE 1-A
 - PAVER TYPE 1-B
 - PAVER TYPE 2
 - BULBS
 - SOD
 - DECIDUOUS TREE
 - CONIFEROUS TREE
 - SHRUBS
 - GRASSES/ PERENNIALS
 - BENCH
 - CENTER SEATING STONE
 - GARBAGE/ RECYCLING
 - PLANTER

ISSUED

No.	Date	Description
1	2020-10-23	ISSUED FOR COORDINATION

P² concepts
 739B RIDGEWOOD AVE., SUITE 201
 OTTAWA, ONTARIO, K1V 6M6

LASHLEY + ASSOCIATES
 LANDSCAPE ARCHITECTURE AND SITE ENGINEERING
 202-850 GLADSTONE AVENUE
 OTTAWA, ON K1Y 3E8
 T 613 238 8579
 F 613 238 4051
 W LashleyLA.com
 E Mail@LashleyLA.com

BRIDOR DEVELOPMENT NEW APARTMENTS

3817-3843 INNES RD
 ORLEANS, OTTAWA

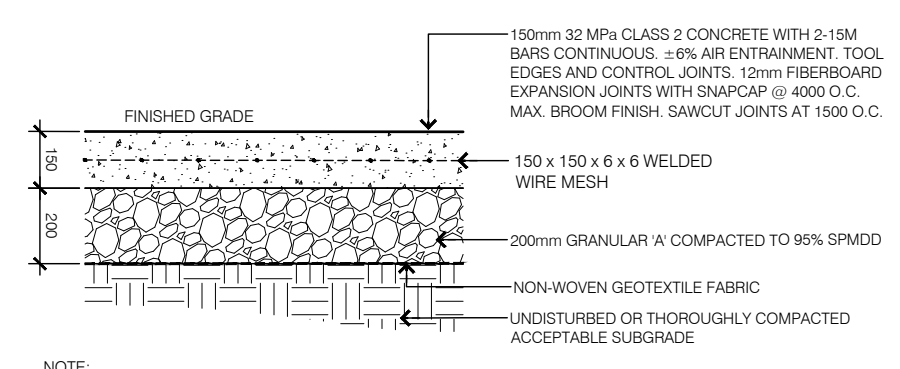
DIMENSION PLAN

Scale: 1:150
 Project No: 20778-1
 Date: 2020-10-23



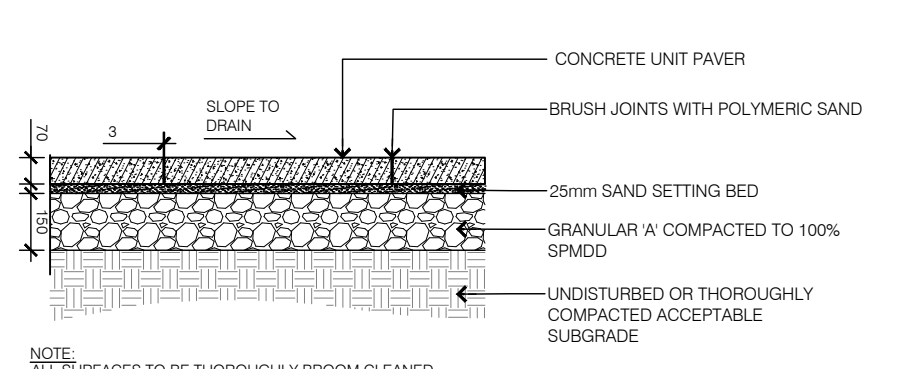
1 DIMENSION PLAN
 L2-02

L2-02



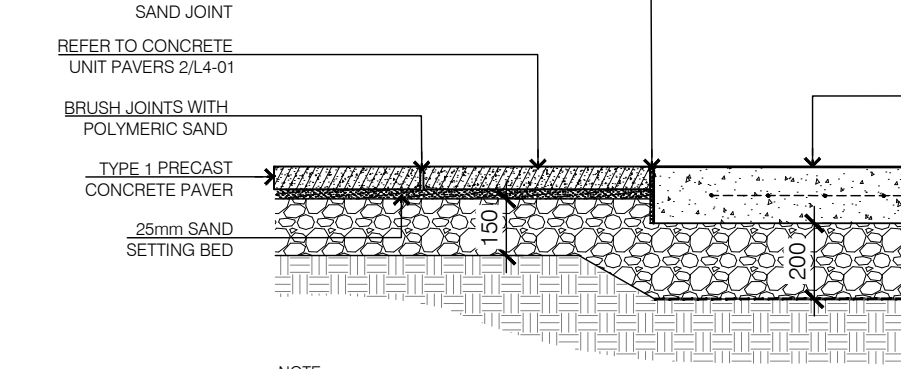
NOTE:
1. STEEL EDGE CONTROL JOINT 1500 O.C. SAWCUT OR TOOLED EXPANSION JOINT 600 O.C. AND ABUTTING OTHER CONCRETE STRUCTURES.
2. REFER TO PLAN FOR FINISH TYPE.

1 LIGHT DUTY CONCRETE PAVING 1:20



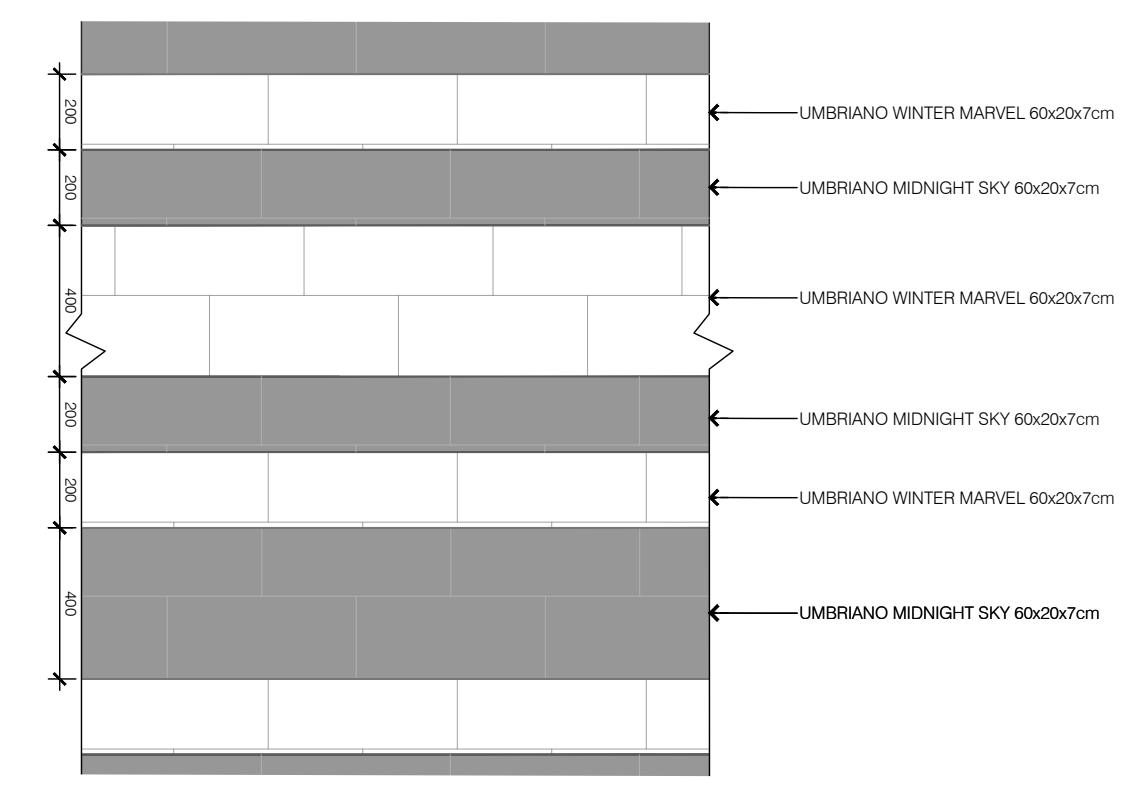
NOTE:
ALL SURFACES TO BE THOROUGHLY BROOM CLEANED

2 CONCRETE UNIT PAVERS 1:20

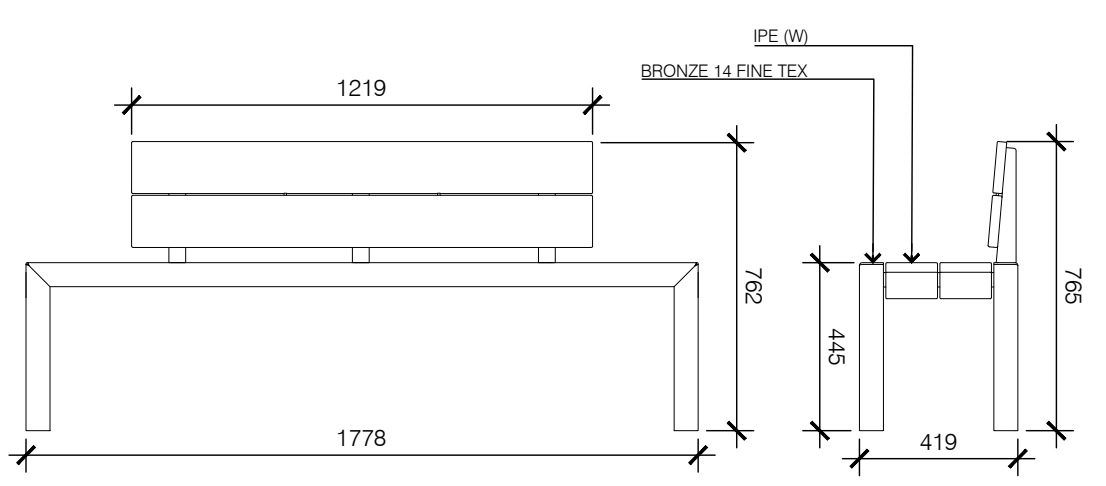


NOTE:
1. STEEL EDGE CONTROL JOINT 1500 O.C. SAWCUT OR TOOLED EXPANSION JOINT 600 O.C. AND ABUTTING OTHER CONCRETE STRUCTURES.
2. REFER TO PLAN FOR FINISH TYPE.
3. ALL SURFACES TO BE THOROUGHLY BROOM CLEANED

3 LIGHT DUTY CONCRETE @ CONCRETE UNIT PAVERS 1:20

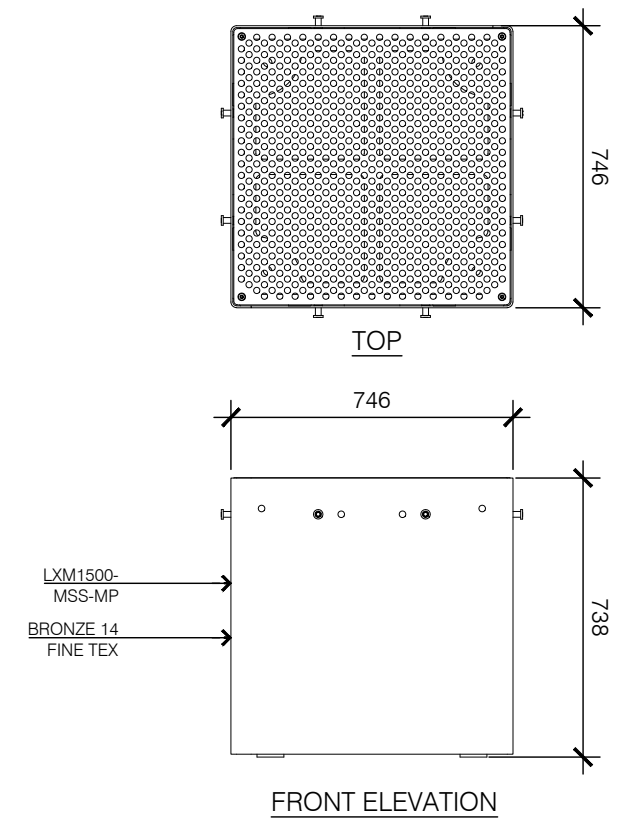


4 PAVING 1:20

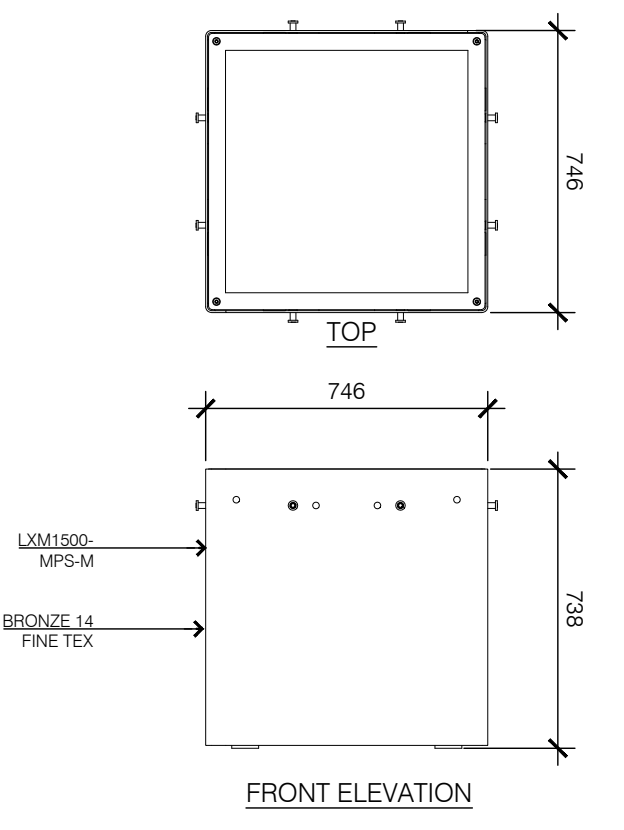


MODEL: MLB1050-W

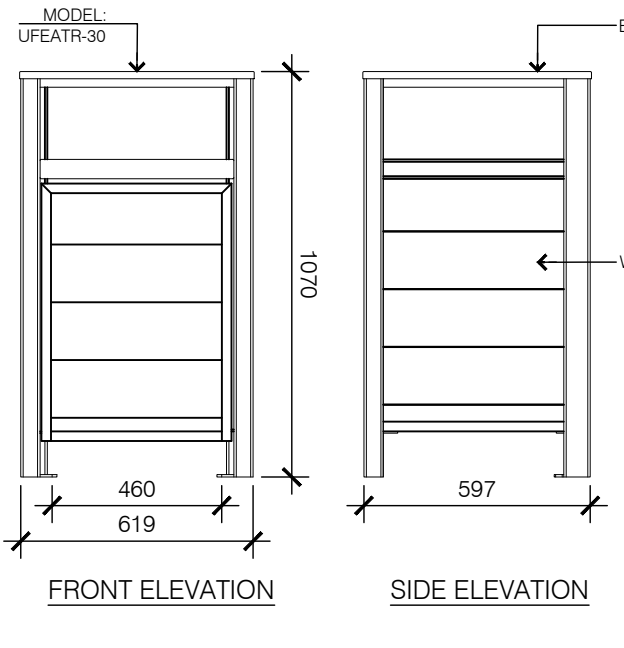
5 BENCH 1:20



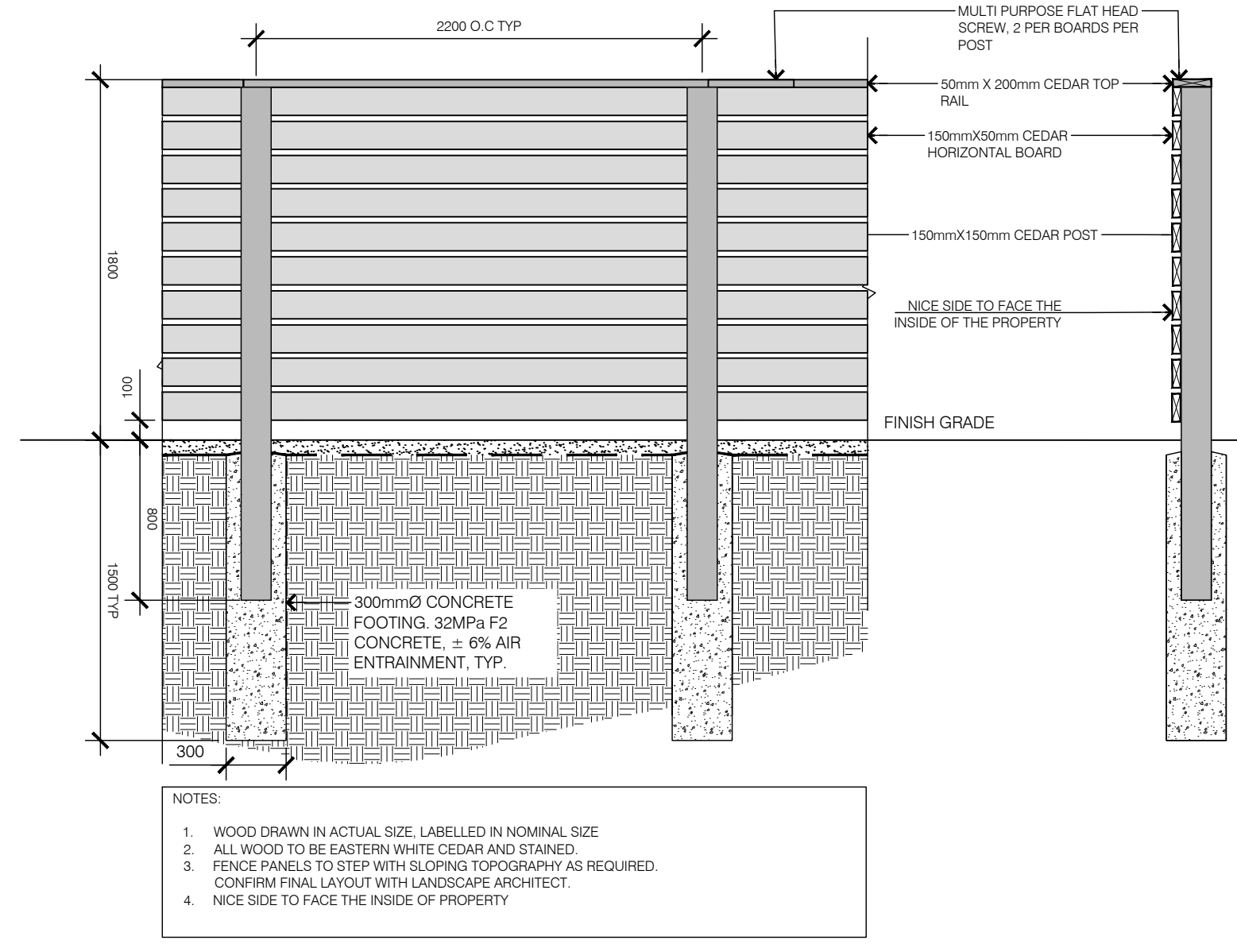
6 SQUARE MODULES 1:20



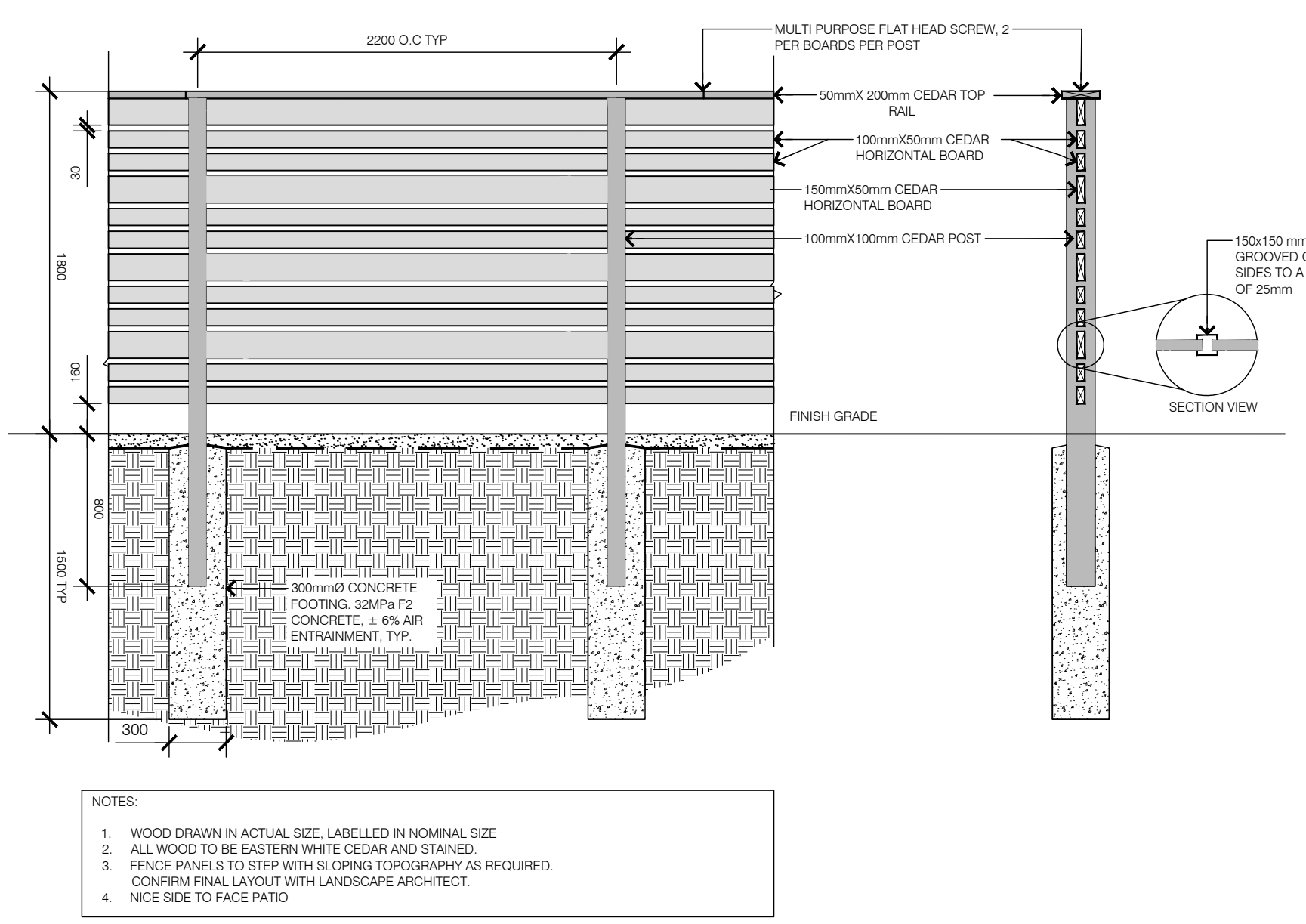
7 PLANTER 1:20



8 GARBAGE/ RECYCLING RECEPTACLE 1:20

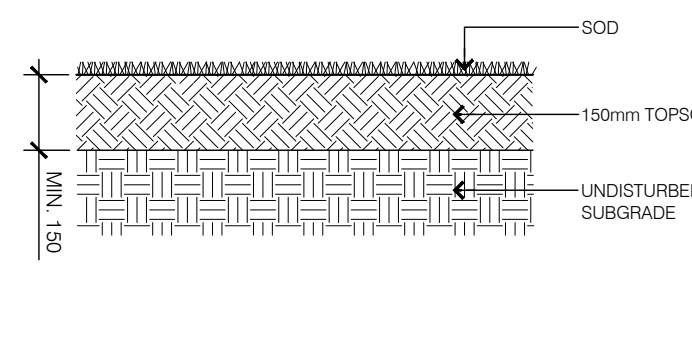


9 FENCE 1:30

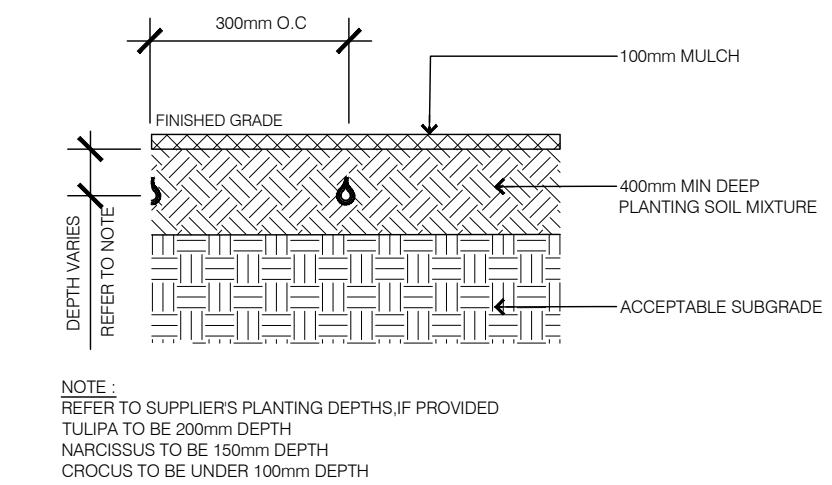


10 PRIVACY FENCE 1:30

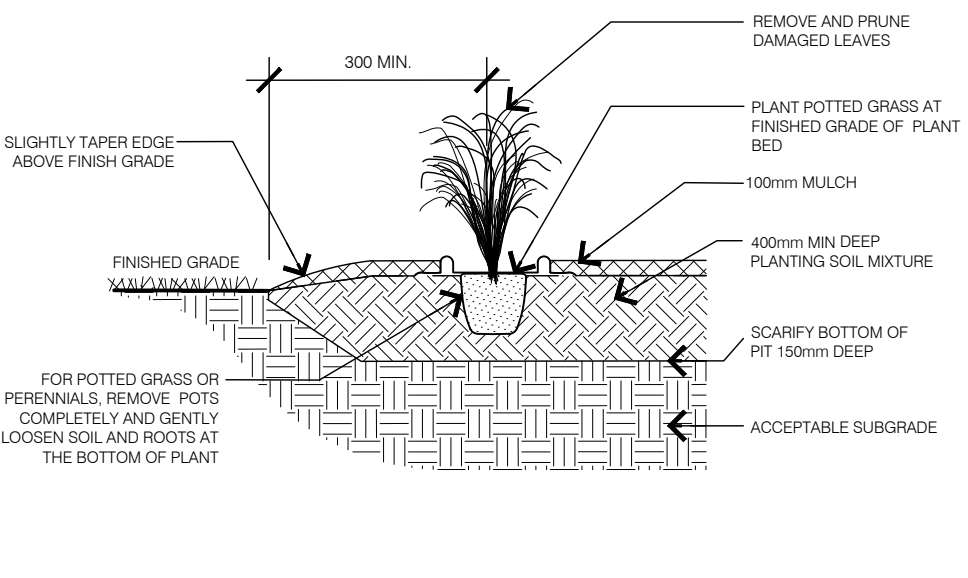
11 URBASTYLE SEAT N.T.S.



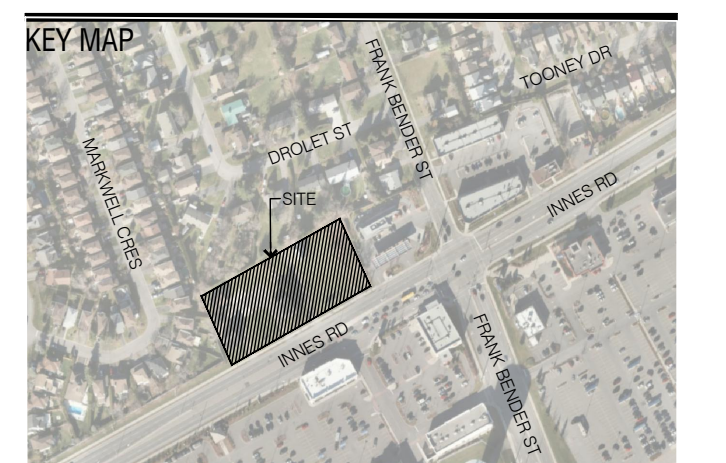
12 SOD 1:15



13 BULB PLANTING 1:20



14 GRASS/ PERENNIAL 1:20



GENERAL NOTES
CONTRACTOR MUST CHECK & VERIFY ALL DIMENSIONS ON THE JOB.
DO NOT SCALE DRAWINGS.
ALL DRAWINGS, SPECIFICATIONS AND RELATED DOCUMENTS ARE THE COPYRIGHT PROPERTY OF THE ARCHITECT AND MUST BE RETURNED UPON REQUEST. REPRODUCTION OF DRAWINGS, SPECIFICATIONS AND RELATED DOCUMENTS IN PART OR IN WHOLE IS FORBIDDEN WITHOUT THE WRITTEN PERMISSION OF THE ARCHITECT.
THIS DRAWING IS NOT TO BE USED FOR CONSTRUCTION UNLESS SIGNED BY THE ARCHITECT.

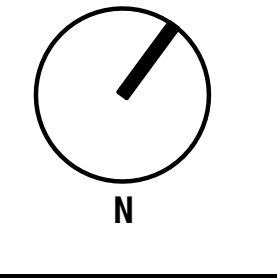
ISSUED

No.	Date	Description
1	2020-10-23	ISSUED FOR COORDINATION

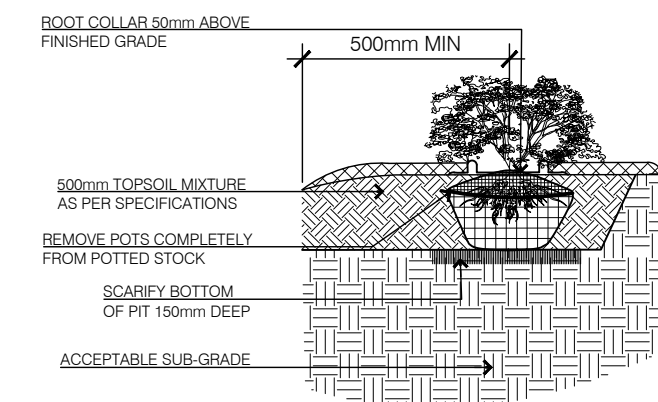
BRIDOR DEVELOPMENT NEW APARTMENTS

3817-3843 INNES RD
ORLEANS, OTTAWA

DETAILS
Scale: AS NOTED
Project No: 20778-1
Date: 2020-10-23



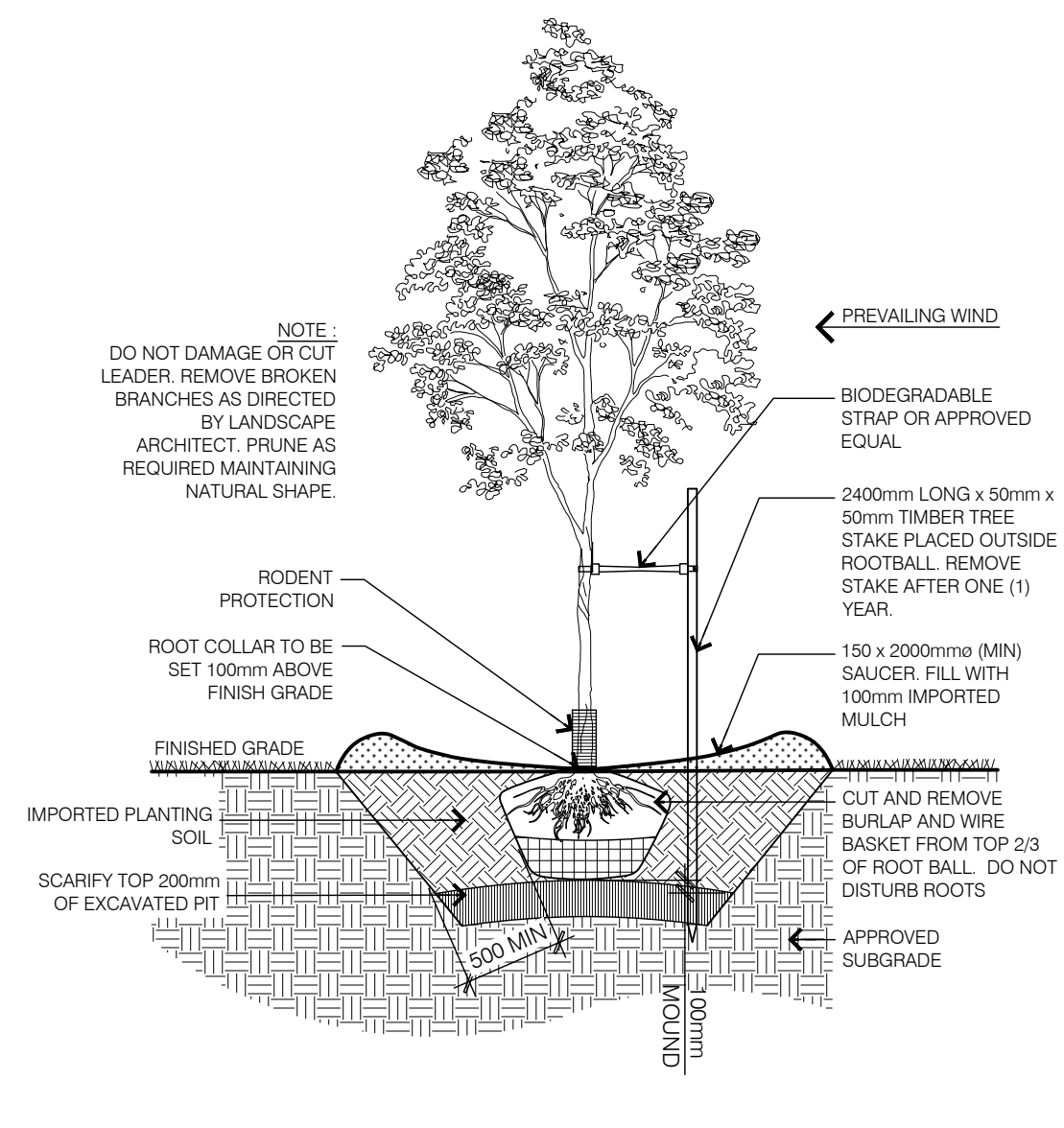
L4-01



NOTE:
PRUNE DAMAGED OR
OBJECTIONABLE BRANCHES.
FOLLOW PROPER
HORTICULTURAL PRACTICE.

COVER ENTIRE BED WITH
100mm DEPTH MULCH. PULL
BACK MULCH FROM BASE OF
SHRUBS. ENSURE THAT
MULCH COVERS ALL EXPOSED
SOIL.

1 SHRUBS
L4-02 1:30



NOTE:
DO NOT DAMAGE OR CUT
LEADER. REMOVE BROKEN
BRANCHES AS DIRECTED
BY LANDSCAPE
ARCHITECT. PRUNE AS
REQUIRED MAINTAINING
NATURAL SHAPE.

BIODEGRADABLE
STRAP OR APPROVED
EQUAL

2400mm LONG x 50mm x
50mm TIMBER TREE
STAKE PLACED OUTSIDE
ROOTBALL. REMOVE
STAKE AFTER ONE (1)
YEAR.

RODENT
PROTECTION

ROOT COLLAR TO BE
SET 100mm ABOVE
FINISH GRADE

150 x 2000mm (MIN)
SAUCER. FILL WITH
100mm IMPORTED
MULCH

FINISHED GRADE

IMPORTED PLANTING
SOIL

SCARIFY TOP 200mm
OF EXCAVATED PIT

CUT AND REMOVE
BURLAP AND WIRE
BASKET FROM TOP 2/3
OF ROOT BALL. DO NOT
DISTURB ROOTS

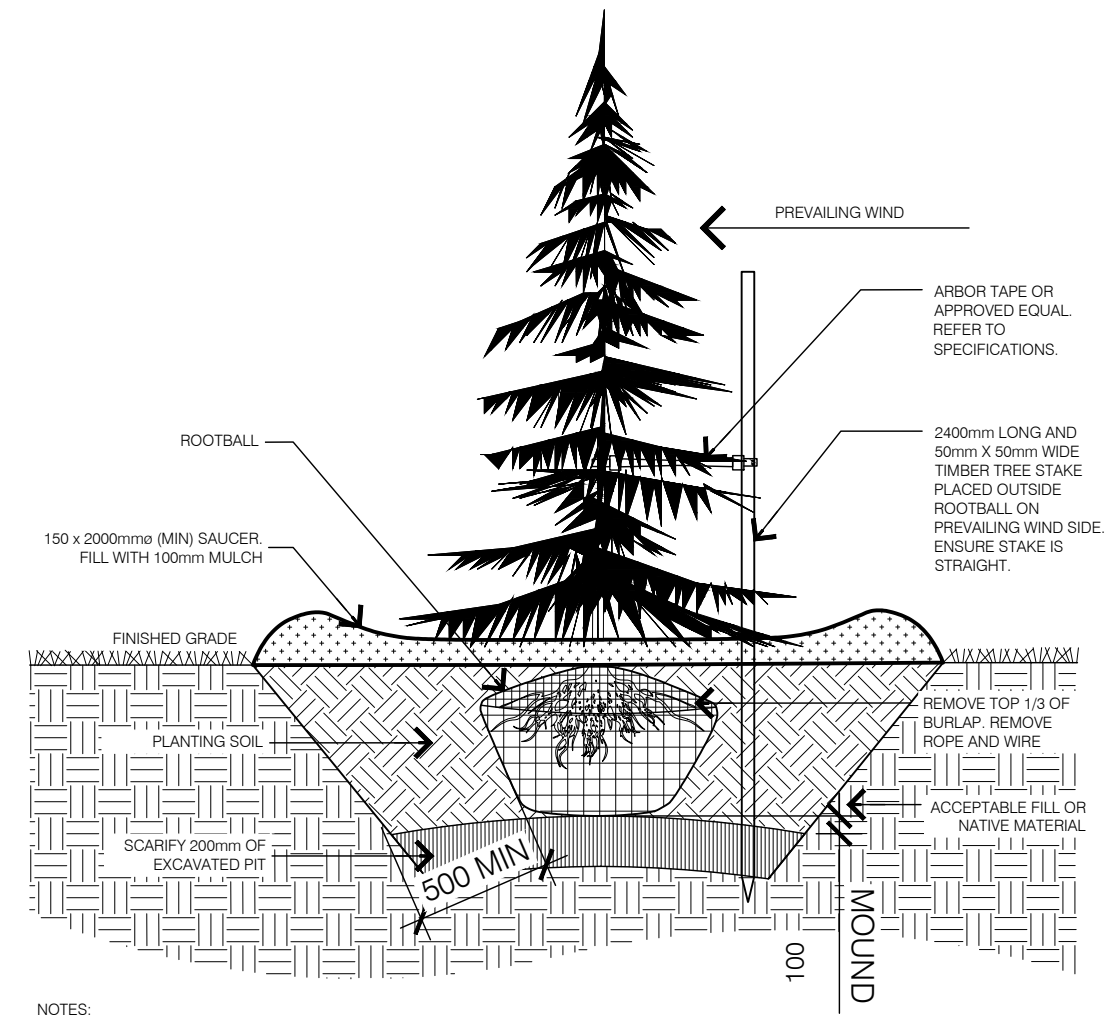
APPROVED
SUBGRADE

500 MIN

100

PREVAILING WIND

2 DECIDUOUS TREE PLANTING
L4-02 1:40



ARBOR TAPE OR
APPROVED EQUAL
REFER TO
SPECIFICATIONS

2400mm LONG AND
50mm x 50mm WIDE
TIMBER TREE STAKE
PLACED OUTSIDE
ROOTBALL ON
PREVAILING WIND SIDE.
ENSURE STAKE IS
STRAIGHT.

ROOTBALL

150 x 2000mm (MIN) SAUCER
FILL WITH 100mm MULCH

FINISHED GRADE

100

PREVAILING WIND

500 MIN

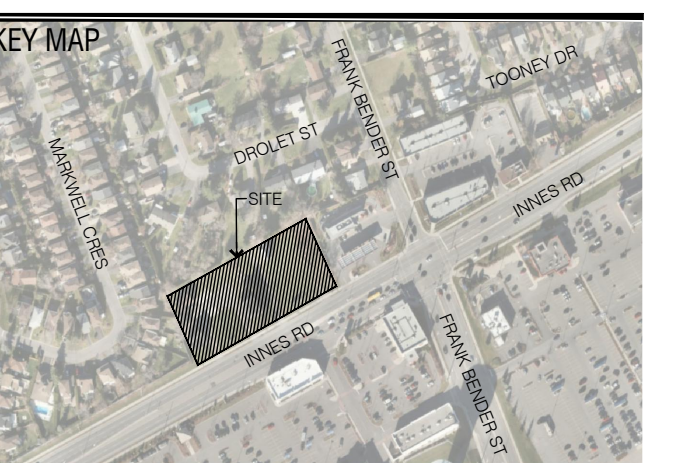
APPROVED
SUBGRADE

NOTE:
PRUNE DAMAGED OR OBJECTIONABLE BRANCHES. FOLLOW PROPER HORTICULTURAL PRACTICE.

COVER ENTIRE BED WITH 100mm DEPTH MULCH. PULL BACK MULCH FROM BASE OF SHRUBS. ENSURE
THAT MULCH COVERS ALL EXPOSED SOIL.

DO NOT DAMAGE OR CUT LEADER. REMOVE BROKEN BRANCHES AS DIRECTED BY LANDSCAPE
ARCHITECT.

3 CONIFEROUS TREE PLANTING
L4-02 1:30



GENERAL NOTES
CONTRACTOR MUST CHECK & VERIFY ALL DIMENSIONS ON THE JOB.
DO NOT SCALE DRAWINGS.
ALL DRAWINGS, SPECIFICATIONS AND RELATED DOCUMENTS ARE THE COPYRIGHT PROPERTY OF THE
ARCHITECT AND MUST BE RETURNED UPON REQUEST. REPRODUCTION OF DRAWINGS,
SPECIFICATIONS AND RELATED DOCUMENTS IN PART OR IN WHOLE IS FORBIDDEN WITHOUT THE
WRITTEN PERMISSION OF THE ARCHITECT.
THIS DRAWING IS NOT TO BE USED FOR CONSTRUCTION UNLESS SIGNED BY THE ARCHITECT.

ISSUED

No.	Date	Description
1	2020-10-23	ISSUED FOR COORDINATION



BRIDOR DEVELOPMENT NEW
APARTMENTS

3817-3843 INNES RD
ORLEANS, OTTAWA

DETAILS

Scale: AS NOTED
Project No: 20778-1
Date: 2020-10-23

L4-02