

DISCLAIMER AND COPYRIGHT

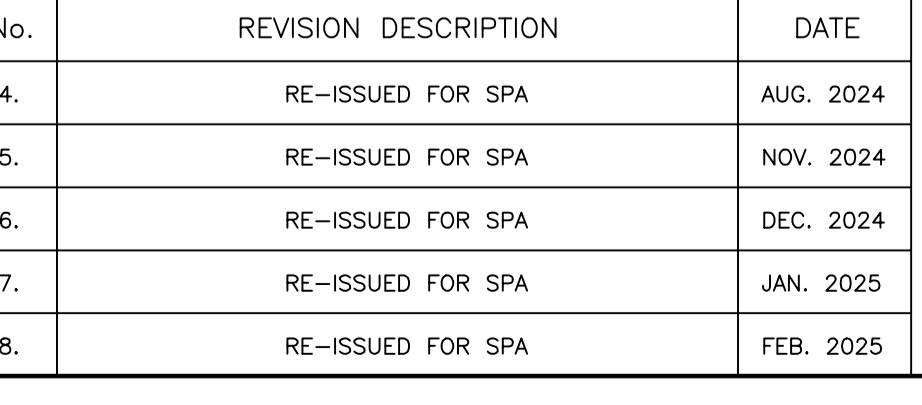
CONTRACTOR MUST VERIFY ALL DIMENSIONS AND BE RESPONSIBLE FOR SAME. ANY DISCREPANCIES MUST BE REPORTED TO THE ENGINEER BEFORE COMMENCING WORK. DRAWINGS ARE NOT TO BE SCALED.

TATHAM ENGINEERING LIMITED CLAIMS COPYRIGHT TO THIS DRAWING WHICH MAY NOT BE USED FOR ANY PURPOSE OTHER THAN THAT PROVIDED IN THE CONTRACT BETWEEN THE OWNER/CLIENT AND THE ENGINEER WITHOUT THE EXPRESS CONSENT OF TATHAM ENGINEERING LIMITED.

BENCHMARK1: FIRE HYDRANT LOCATED ON SOUTH SIDE OF INNES ROAD, SOUTH OF SITE. TOP OF SPINDLE ELEV=92.46

BENCHMARK2: FIRE HYDRANT LOCATED ON SOUTH SIDE OF INNES ROAD, SOUTHEAST OF SITE(90.0m EAST FROM BENCHMARK 1) TOP OF SPINDLE ELEV=92.13

No.	REVISION DESCRIPTION	DATE	ENGINEER STAMP
4.	RE-ISSUED FOR SPA	AUG. 2024	
5.	RE-ISSUED FOR SPA	NOV. 2024	
6.	RE-ISSUED FOR SPA	DEC. 2024	
7.	RE-ISSUED FOR SPA	JAN. 2025	
8.	RE-ISSUED FOR SPA	FEB. 2025	



BRIDOR DEVELOPMENTS
3817-3843 INNES ROAD
CITY OF OTTAWA

DETAILS - 3

TATHAM ENGINEERING

DESIGN: HY/GC FILE: 522676 DWG: **C502**

DRAWN: HY DATE: OCT 2022

CHECK: GC SCALE: 1:250