

3817 INNES ROAD  
OTTAWA, CANADA  
DRAWN BY: [ ]  
CHECKED BY: [ ]  
DATE: [ ]  
PROJECT # [ ]  
DESCRIPTION [ ]  
DATE DRY CHK [ ]

4640 TRUMAN BLVD  
1-800-733-7473  
ADS

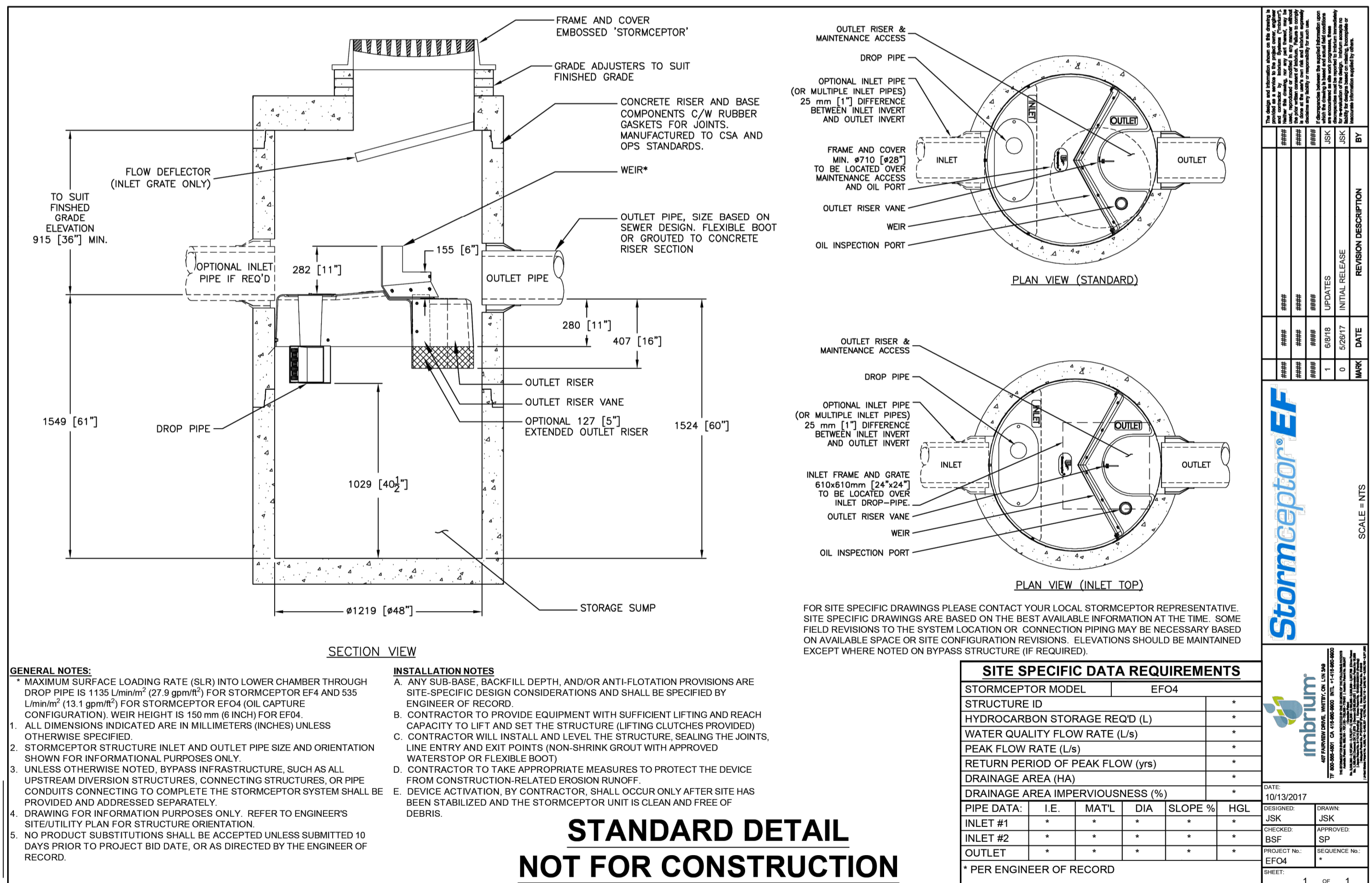
770822443 | WWW.NYLOPLAST-US.COM  
DATE DRY CHK [ ]

3817 INNES ROAD  
OTTAWA, CANADA  
DRAWN BY: [ ]  
CHECKED BY: [ ]  
DATE: [ ]  
PROJECT # [ ]  
DESCRIPTION [ ]  
DATE DRY CHK [ ]

4640 TRUMAN BLVD  
1-800-733-7473  
ADS

770822443 | WWW.NYLOPLAST-US.COM  
DATE DRY CHK [ ]

SHEET  
6 OF 6



**DISCLAIMER AND COPYRIGHT**

CONTRACTOR MUST VERIFY ALL DIMENSIONS AND BE RESPONSIBLE FOR SAME. ANY DISCREPANCIES MUST BE REPORTED TO THE ENGINEER BEFORE COMMENCING WORK. DRAWINGS ARE NOT TO BE SCALED.

TATHAM ENGINEERING LIMITED CLAIMS COPYRIGHT TO THIS DRAWING WHICH MAY NOT BE USED FOR ANY PURPOSE OTHER THAN THAT PROVIDED IN THE CONTRACT BETWEEN THE OWNER/CLIENT AND THE ENGINEER WITHOUT THE EXPRESS CONSENT OF TATHAM ENGINEERING LIMITED.

BENCHMARK1: FIRE HYDRANT LOCATED ON SOUTH SIDE OF INNES ROAD, SOUTH OF SITE. TOP OF SPINDLE ELEV=92.46

BENCHMARK2: FIRE HYDRANT LOCATED ON SOUTH SIDE OF INNES ROAD, SOUTHEAST OF SITE(90.0m EAST FROM BENCHMARK 1) TOP OF SPINDLE ELEV=92.13

No.	REVISION DESCRIPTION	DATE	ENGINEER STAMP
2.	RE-ISSUED FOR SPA	APR. 2023	[ ]
3.	RE-ISSUED FOR SPA	JUL. 2023	[ ]
4.	RE-ISSUED FOR SPA	AUG. 2024	[ ]
5.	RE-ISSUED FOR SPA	NOV. 2024	[ ]
6.	RE-ISSUED FOR SPA	DEC. 2024	[ ]



**BRIDOR DEVELOPMENTS**  
3817-3843 INNES ROAD  
CITY OF OTTAWA

DETAILS - 3

**TATHAM ENGINEERING**

DESIGN: HY/GC FILE: 522676 DWG: **C502**

DRAWN: HY DATE: OCT 2022

CHECK: GC SCALE: 1:250