

*All Hamlin*

**ALLISON HAMLIN  
MANAGER (A), DEVELOPMENT REVIEW WEST  
PLANNING, REAL ESTATE & ECONOMIC DEVELOPMENT  
DEPARTMENT, CITY OF OTTAWA**

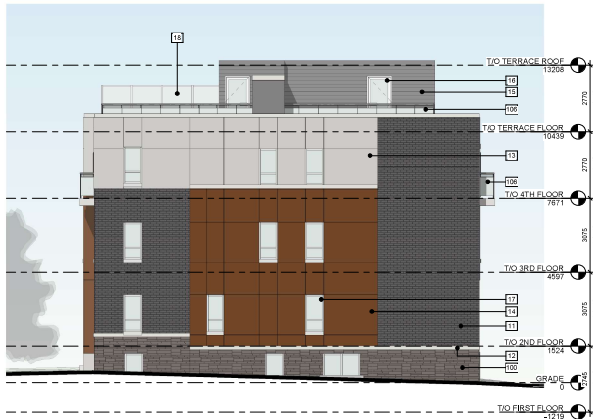
**APPROVED**  
By Allison Hamlin at 7:34 pm, Sep 26, 2022



- EXTERIOR ELEVATION LEGEND**
- 10 CONCRETE STAIRS - COLOUR: LIGHT GREY
  - 11 BRICK MASONRY VENEER - COLOUR: DARK GREY/GW DARK GREY GROUT/ONYX
  - 12 CONCRETE MASONRY SILL - COLOUR: LIGHT GREY
  - 13 (METAL OR FIBER CEMENT) PANEL CLADDING - COLOUR: LIGHT GREY
  - 14 (METAL OR FIBER CEMENT) PANEL CLADDING - COLOUR: SENNA BROWN
  - 15 PLANK CLADDING - COLOUR: DARK GREY
  - 16 PAINTED METAL EXTERIOR DOOR - COLOUR: SENNA BROWN
  - 17 FRAMED WINDOW GW CLEAR GLAZING - COLOUR: LIGHT GREY
  - 18 FRAMED ALUMINUM PRIVACY TERRACE GUARD WALL - COLOUR: LIGHT GREY, FROSTED GLAZING
  - 19 MANUFACTURED STONE MASONRY - COLOUR: BROWN (FARVEIN TAUPE HC48 BY BENJAMIN MOORE)
  - 20 CLEAR ANODIZED ALUMINUM GUARD RAIL WITH CLEAR GLAZING & SLAB-EDGE COVER (COLOUR: LIGHT GREY, CLEAR)
  - 21 PREFINISHED METAL CORING (COLOUR: MATCH ADJACENT)

BLOCKS 1,3,5,6,8,9

BLOCKS 2,4,7



4 TH ELEV @ INNER END (TYP)  
A320 1:96



7 TH ELEV @ CAMPEAU (TYP 6-BLOCK)  
A320 1:96



5 TH ELEV @ OUTER END (TYP)  
A320 1:96



6 TH ELEV @ PARKING (TYP 6-BLOCK)  
A320 1:96

**DEVELOPMENT CONSULTANT**  
ARCHITECTS  
1000 AVENUE PARADISE  
OTTAWA, ONTARIO  
K1H 8L9  
P: 613-735-1111  
F: 613-735-1112  
E: info@fabiani.ca  
WWW.FABIANIARCHITECT.COM

**ARCHITECTS**  
FABIANI ARCHITECT LTD.  
1000 AVENUE PARADISE  
OTTAWA, ONTARIO  
K1H 8L9  
P: 613-735-1111  
F: 613-735-1112  
E: info@fabiani.ca  
WWW.FABIANIARCHITECT.COM

**PROFESSIONAL CERTIFICATION**  
FABIANI ARCHITECT LTD.  
REGISTERED ARCHITECTS  
FERNANDO FABIANI  
LEONIE FABIANI  
30937

**ARCHITECTS ASSOCIATION OF ONTARIO**  
PROFESSIONAL CERTIFICATION  
BHG  
BAYVIEW  
HARRIS

**KANATA MIXED-USE RESIDENTIAL PROJECT**  
2022 CAMPEAU DRIVE, CANATA, ONTARIO  
TYPICAL TOWNHOUSE ELEVATIONS

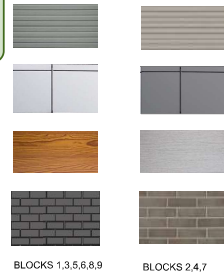
DATE: 20-1-25  
SCALE: 1:96  
PROJECT NO: F19-049  
SHEET NO: 1

1-888-CORNWALL ROAD, DAVENPYLE, ONTARIO  
P: 905-837-7298 E: info@cornwall.ca

*Allison Hamlin*

**ALLISON HAMLIN  
MANAGER (A), DEVELOPMENT REVIEW WEST  
PLANNING, REAL ESTATE & ECONOMIC DEVELOPMENT  
DEPARTMENT, CITY OF OTTAWA**

**APPROVED**  
By Allison Hamlin at 7:34 pm, Sep 26, 2022



- EXTERIOR ELEVATION LEGEND**
- 11 BRICK MASONRY VENEER - COLOUR: DARK GREY/OW DARK GREY GROUT(X)
  - 12 CONCRETE MASONRY SILL - COLOUR: LIGHT GREY
  - 13 (METAL OR FIBER CEMENT) PANEL CLADDING - COLOUR: LIGHT GREY
  - 14 (METAL OR FIBER CEMENT) PANEL CLADDING - COLOUR: SENNA BROWN
  - 15 PLANK CLADDING - COLOUR: DARK GREY
  - 16 PAINTED METAL EXTERIOR DOOR - COLOUR: SENNA BROWN
  - 17 FRAMED WINDOW CW CLEAR GLAZING - COLOUR: LIGHT GREY
  - 18 FRAMED ALUMINUM PRIVACY TERRACE GUARD WALL - COLOUR: LIGHT GREY, Frosted GLAZING
  - 190 MANUFACTURED STONE MASONRY - COLOUR: BROWN (FAVORITE TAUPES BY BENJAMIN MOORE)
  - 196 CLEAR ANODIZED ALUMINUM GUARD RAIL WITH CLEAR GLAZING & SLABEDGE COVER (COLOUR: LIGHT GREY, CLEAR)



3 TH ELEV @ CAMPEAU (TYP 5-BLOCK)  
A321 1:96



1 TH ELEV @ CAMPEAU (TYP 4-BLOCK)  
A321 1:96



4 TH ELEV @ PARKING SIDE (TYP 5-BLOCK)  
A321 1:96



2 TH ELEV @ PARKING SIDE (TYP 4-BLOCK)  
A321 1:96

**DEVELOPMENT CONSULTANT**  
ARCHITECTURE  
INTERIOR DESIGN  
LANDSCAPE ARCHITECTURE  
PLANNING  
PROJECT MANAGEMENT

**API**  
ARCHITECTURAL PROJECT INC.

**PROJECT NOTES**

1. THE INFORMATION CONTAINED HEREIN IS FOR THE EXCLUSIVE USE OF THE CLIENT AND IS NOT TO BE REPRODUCED, COPIED, OR TRANSMITTED IN ANY FORM OR BY ANY MEANS, ELECTRONIC OR MECHANICAL, INCLUDING PHOTOCOPYING, RECORDING, OR BY ANY INFORMATION STORAGE AND RETRIEVAL SYSTEM, WITHOUT THE WRITTEN PERMISSION OF THE ARCHITECT.
2. THE ARCHITECT'S LIABILITY IS LIMITED TO THE PROFESSIONAL SERVICES PROVIDED AND DOES NOT INCLUDE THE DESIGN OF STRUCTURAL, MECHANICAL, ELECTRICAL, OR OTHER SPECIALTY SYSTEMS UNLESS SPECIFICALLY NOTED OTHERWISE.
3. THE ARCHITECT'S LIABILITY IS LIMITED TO THE PROFESSIONAL SERVICES PROVIDED AND DOES NOT INCLUDE THE DESIGN OF STRUCTURAL, MECHANICAL, ELECTRICAL, OR OTHER SPECIALTY SYSTEMS UNLESS SPECIFICALLY NOTED OTHERWISE.

**FABIANI ARCHITECT LTD.**

**ASSOCIATE OF ARCHITECTS OF ONTARIO**  
**FERRANDO FABIANI**  
**1997**

**PROFESSIONAL CERTIFICATION**

**BHW**  
**BAYVIEW**

**KANATA MIXED-USE RESIDENTIAL PROJECT**  
3027 CAMPEAU ROAD, CANADA, ONTARIO

**TYPICAL TOWNHOUSE ELEVATIONS**

Author: [Name]      Checker: [Name]  
Date: [Date]      Scale: 1:96

**F19-049**

**A321**

1488 CORNWALL ROAD, GATLIE, QUEBEC      P: 905.337.098      E: info@fabiani.ca