

GENERAL NOTES:
 IT IS THE CONTRACTOR'S RESPONSIBILITY TO:
 1. USE FIXED DIMENSIONS IN PREFERENCE TO SCALING.
 2. VERIFY AND CHECK ALL DIMENSIONS PRIOR TO AND DURING CONSTRUCTION.
 3. DETERMINE LOCATIONS OF ALL EXISTING SERVICES.
 4. PLANS ARE IN CONFORMANCE WITH THE ONTARIO BUILDING CODE.
 ANY CHANGES, DISCREPANCIES OR SUBSTITUTIONS SHALL BE REPORTED TO AND REVIEWED BY THE ARCHITECT BEFORE PROCEEDING.

DATE	BY	DESCRIPTION
2011.11.26	KP	ISSUED FOR PERMIT
2012.05.04	FF	REVISED FOR PERMIT

SCALE	1:250
REVISION	1:250
DATE	2011.11.26
BY	KP
DESCRIPTION	ISSUED FOR PERMIT



PROJECT NAME: **KANATA MIXED-USE RESIDENTIAL PROJECT**
 6301 CAMPEAU DRIVE, OTTAWA

DRAWING TITLE: **APARTMENT A&B NORTH AND EAST ELEVATIONS**

PROJECT NO: **F19-049**

DRAWING NO: **A-300A**

DATE: **20-11-26**

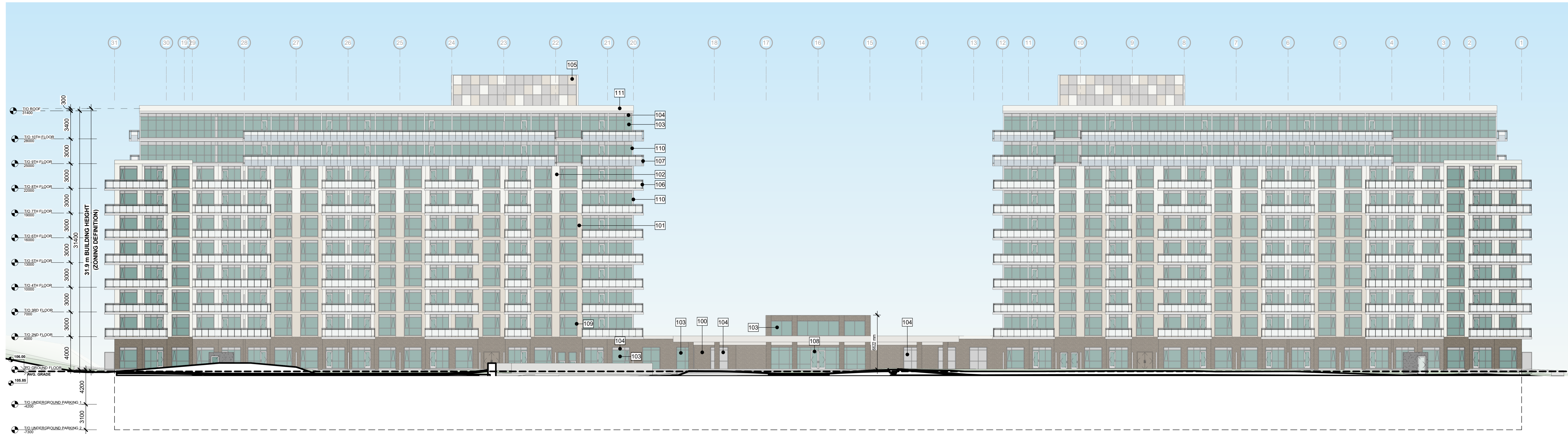
CHECKED BY: **FF**

SCALE: **1:250**

PARCEL #: **1**

SHEET ISSUE NO: **1**

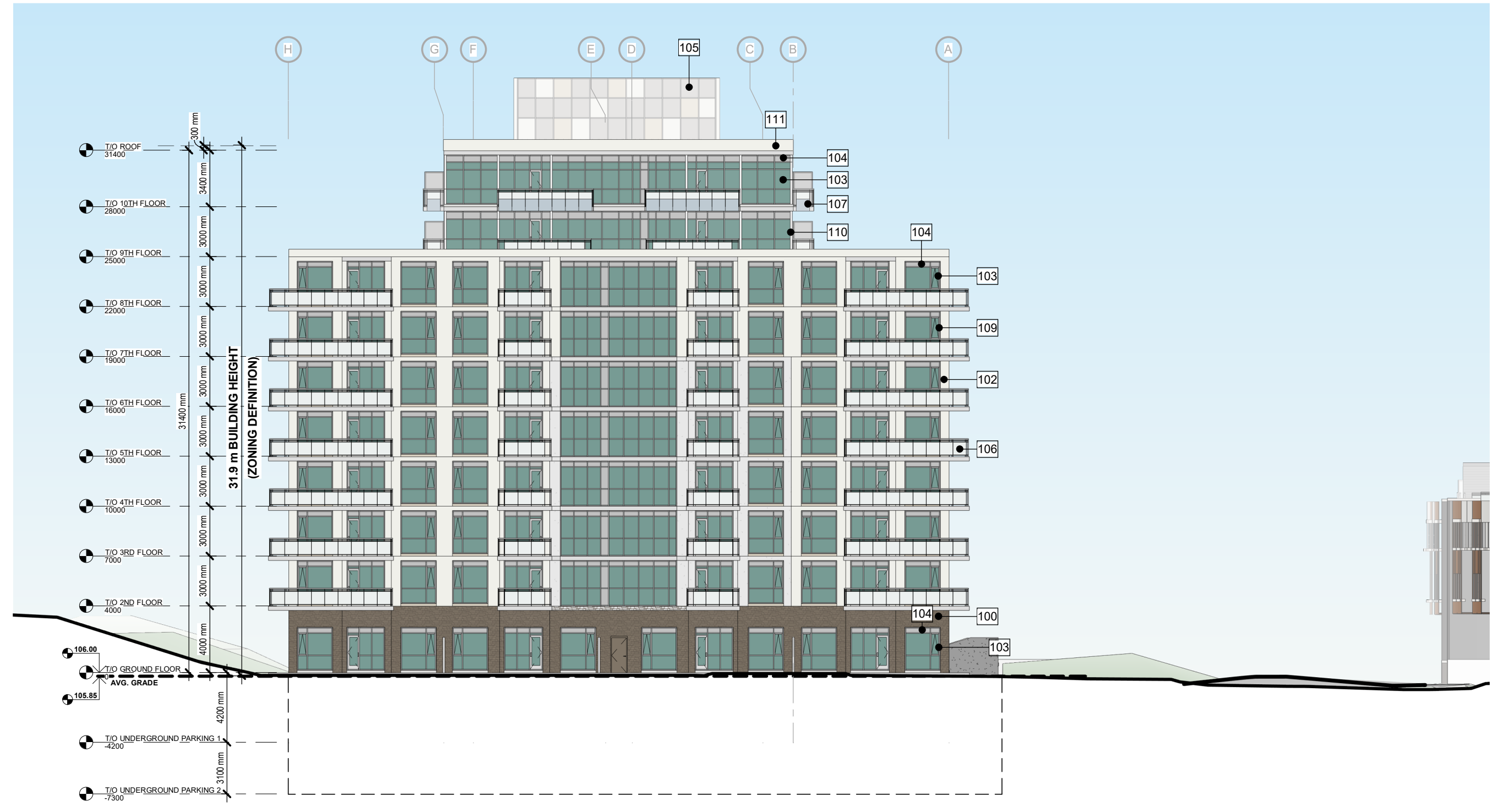
#17421



1 NORTH ELEVATION
 1:250

EXTERIOR ELEVATION LEGEND

- 100 MANUFACTURED STONE MASONRY - COLOUR: BROWN (FAIRVIEW TAUPE HC-85 BY BENJAMIN MOORE)
- 101 PREFABRICATED PANELIZED & PREFINISHED STONE CLADDING SYSTEM-COLOUR:BEIGE (ELMIRA WHITE HC-84 BY BENJAMIN MOORE)
- 102 PREFABRICATED PANELIZED & PREFINISHED STONE CLADDING SYSTEM-COLOUR:LIGHT GREY (OXFORD WHITE CC-30 BY BENJAMIN MOORE)
- 103 VISION GLASS (COLOUR: CLEAR C/W LIGHT GREEN LOW E COATING)
- 104 BACK-PAINTED GLASS SPANDREL (COLOUR: LIGHT GREY TO MATCH MULLIONS)
- 105 NON-REFLECTIVE METAL SPANDREL PANELS - COLOUR: RANDOM VARIATION TO MATCH BUILDING COLOURS
- 106 CLEAR ANODIZED ALUMINUM GUARD RAIL WITH CLEAR GLAZING & SLAB-EDGE COVER (COLOUR: LIGHT GREY, CLEAR)
- 107 CLEAR ANODIZED ALUMINUM GUARD RAIL WITH FROSTED GLAZING & SLAB-EDGE COVER (COLOUR: LIGHT GREY CLEAR)
- 108 CLEAR ANODIZED STOREFRONT GLAZING (COLOUR: LIGHT GREY, CLEAR)
- 109 CLEAR ANODIZED ALUMINUM WINDOW (COLOUR: LIGHT GREY)
- 110 CLEAR ANODIZED ALUMINUM WINDOW WALL (COLOUR: LIGHT GREY)
- 111 PREFINISHED METAL CLADDING: LIGHT GREY (OXFORD WHITE CC-30 BY BENJAMIN MOORE)



2 EAST ELEVATION
 1:250

GENERAL NOTES:
 1. IT IS THE CONTRACTOR'S RESPONSIBILITY TO USE FIXED DIMENSIONS IN PREFERENCE TO SCALING.
 2. VERIFY AND CHECK ALL DIMENSIONS PRIOR TO AND DURING CONSTRUCTION.
 3. DETERMINE LOCATIONS OF ALL EXISTING SERVICES.
 4. PLANS ARE IN CONFORMANCE WITH THE ONTARIO BUILDING CODE.
 ANY CHANGES, DISCREPANCIES OR SUBSTITUTIONS SHALL BE REPORTED TO AND REVIEWED BY THE ARCHITECT BEFORE PROCEEDING.

NO.	DATE	DESCRIPTION
1	20-11-26	ISSUED FOR PERMIT
2	21-05-24	REVISED PER COMMENTS

REVISIONS	DATE	DESCRIPTION
1	20-11-26	ISSUED FOR PERMIT
2	21-05-24	REVISED PER COMMENTS

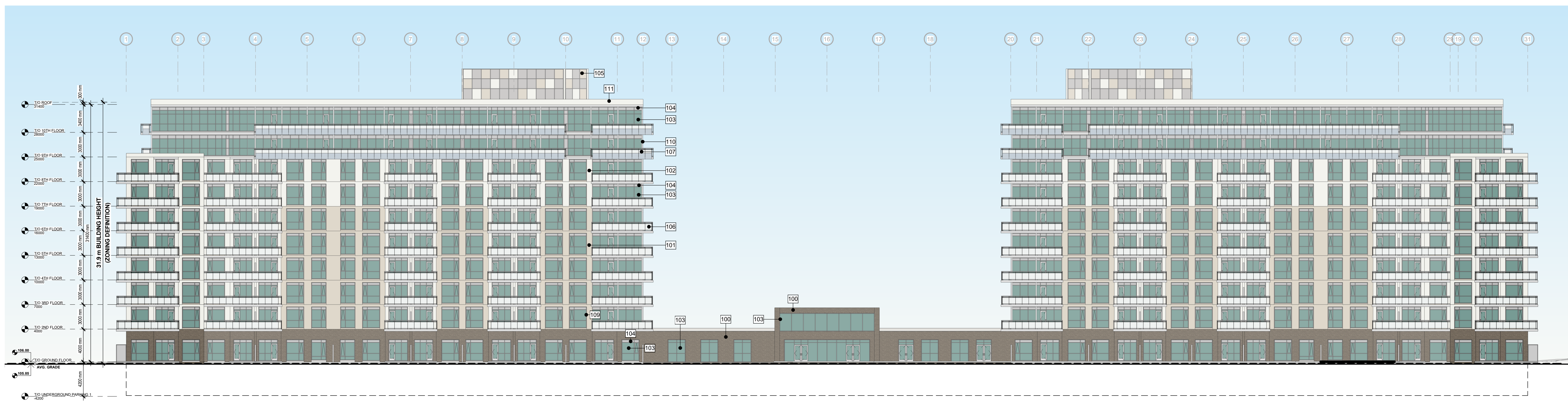
SCALE	1:250
DATE	20-11-26
PROJECT	KANATA MIXED-USE RESIDENTIAL PROJECT
LOCATION	6301 CAMPEAU DRIVE, OTTAWA
CLIENT	APARTMENT A&B SOUTH AND WEST ELEVATIONS

DESIGNED BY	ARCHITECT
DRAWN BY	ARCHITECT
CHECKED BY	ARCHITECT
DATE	20-11-26



PROJECT NAME: KANATA MIXED-USE RESIDENTIAL PROJECT
 6301 CAMPEAU DRIVE, OTTAWA
 DRAWING TITLE: APARTMENT A&B SOUTH AND WEST ELEVATIONS
 PROJECT NO: F19-049
 PARCEL #: 1
 DRAWING NO: A-301A
 SHEET ISSUE NO: 1

7-1664 CORNWALL ROAD ORAVILLE, ON L6J 7W5
 P. (905) 337-7249 E. am@apiconsultants.net
 #17421
 D07-12-17-0063



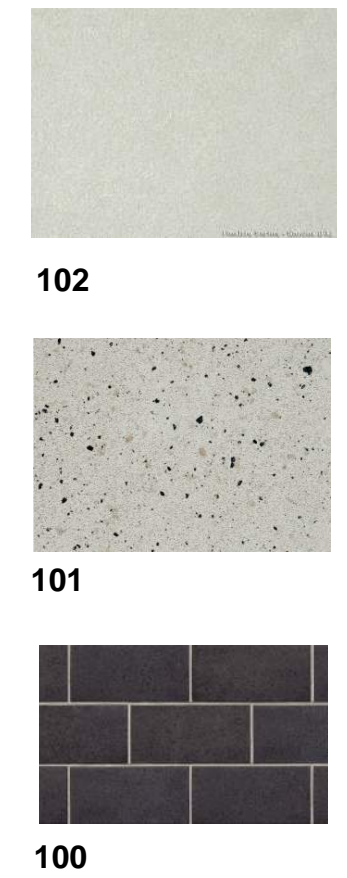
1 SOUTH ELEVATION
 A-301A 1 : 250



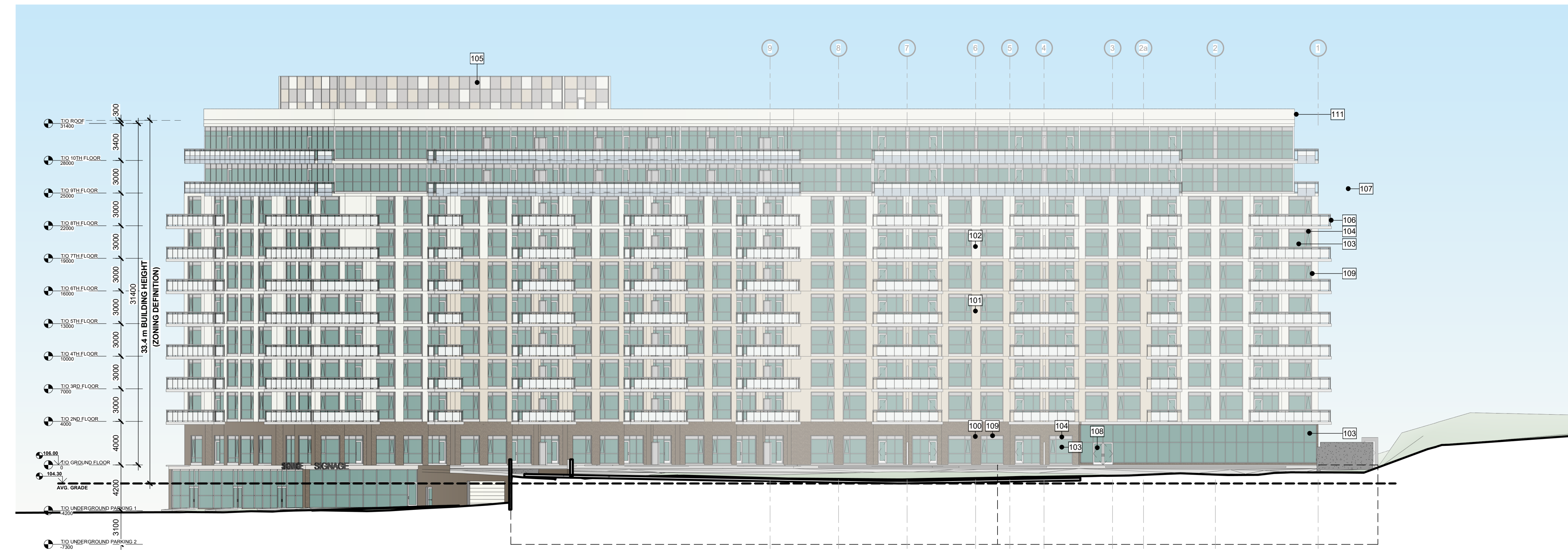
2 WEST ELEVATION
 A-301A 1 : 250

EXTERIOR ELEVATION LEGEND

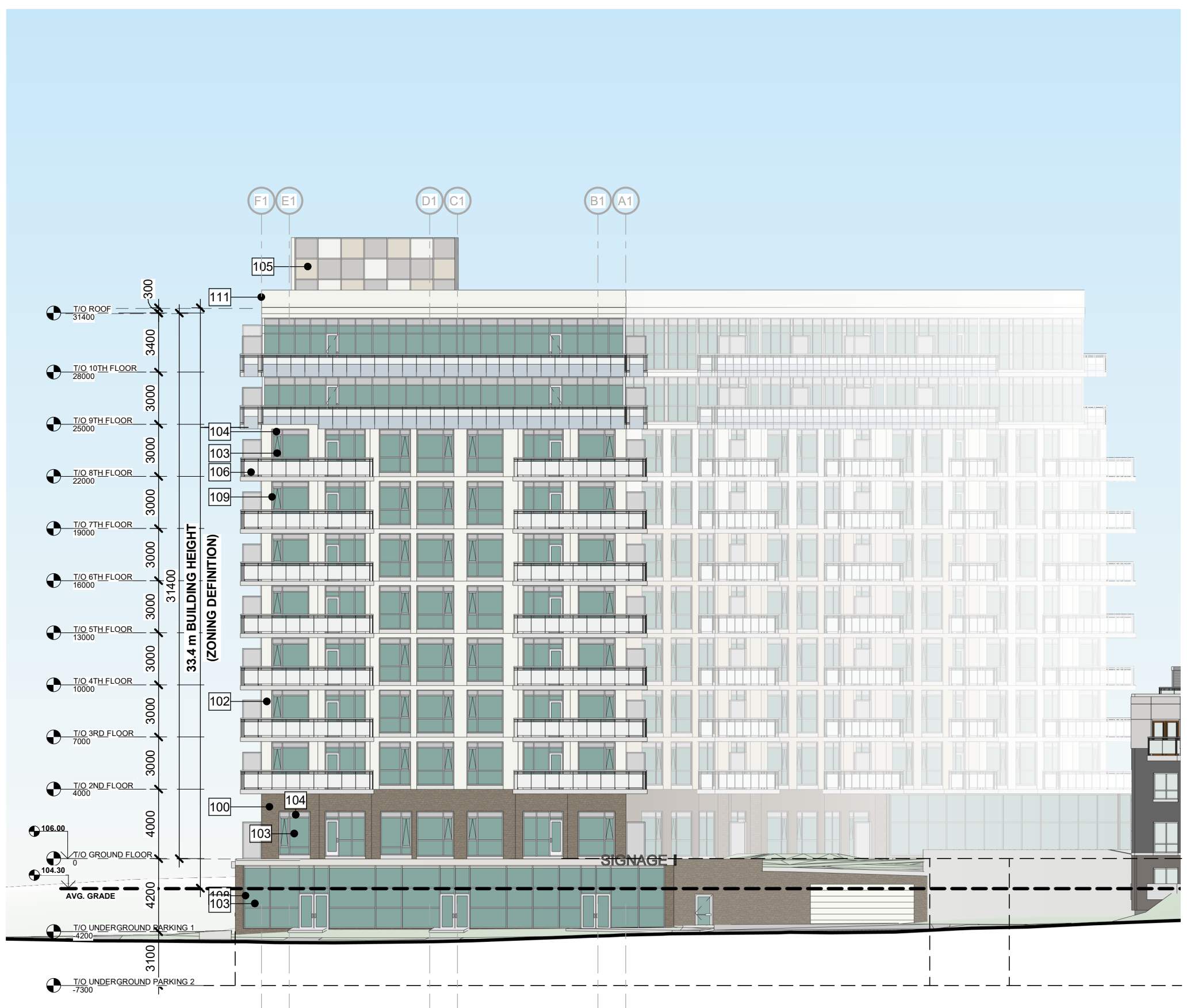
- 100 MANUFACTURED STONE MASONRY - COLOUR: BROWN (FAIRVIEW TALUPE HC-85 BY BENJAMIN MOORE)
- 101 PREFABRICATED PANELIZED & PREFINISHED STONE CLADDING SYSTEM-COLOUR: BEIGE (ELMIRA WHITE HC-84 BY BENJAMIN MOORE)
- 102 PREFABRICATED PANELIZED & PREFINISHED STONE CLADDING SYSTEM-COLOUR: LIGHT GREY (OXFORD WHITE CC-30 BY BENJAMIN MOORE)
- 103 VISION GLASS (COLOUR: CLEAR CW LIGHT GREEN LOW E COATING)
- 104 BACK-PAINTED GLASS SPANDREL (COLOUR: LIGHT GREY TO MATCH MULLIONS)
- 105 NON-REFLECTIVE METAL SPANDREL PANELS - COLOUR: RANDOM VARIATION TO MATCH BUILDING COLOURS
- 106 CLEAR ANODIZED ALUMINUM GUARD RAIL WITH CLEAR GLAZING & SLAB-EDGE COVER (COLOUR: LIGHT GREY, CLEAR)
- 107 CLEAR ANODIZED ALUMINUM GUARD RAIL WITH FROSTED GLAZING & SLAB-EDGE COVER (COLOUR: LIGHT GREY, CLEAR)
- 108 CLEAR ANODIZED STOREFRONT GLAZING (COLOUR: LIGHT GREY, CLEAR)
- 109 CLEAR ANODIZED ALUMINUM WINDOW (COLOUR: LIGHT GREY)
- 110 CLEAR ANODIZED ALUMINUM WINDOW WALL (COLOUR: LIGHT GREY)
- 111 PREFINISHED METAL CLADDING: LIGHT GREY (OXFORD WHITE CC-30 BY BENJAMIN MOORE)



GENERAL NOTES:
1. IT IS THE CONTRACTOR'S RESPONSIBILITY TO USE DIMENSIONS IN PREFERENCE TO SCALING.
2. VERIFY AND CHECK ALL DIMENSIONS PRIOR TO AND DURING CONSTRUCTION.
3. DETERMINE LOCATIONS OF ALL EXISTING SERVICES.
4. PLANS ARE IN CONFORMANCE WITH THE ONTARIO BUILDING CODE.
ANY CHANGES, DISCREPANCIES OR SUBSTITUTIONS SHALL BE REPORTED TO AND REVIEWED BY THE ARCHITECT BEFORE PROCEEDING.



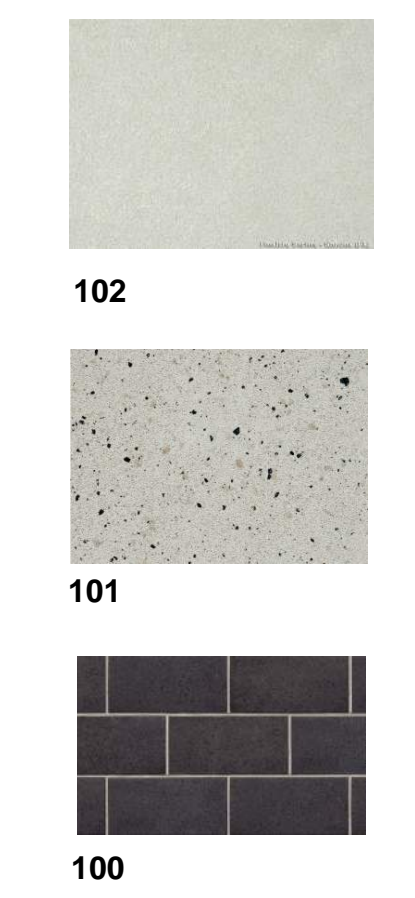
1 North Elevation
A-3100 1 : 250



2 East Elevation
A-3100 1 : 250

EXTERIOR ELEVATION LEGEND

- 100 MANUFACTURED STONE MASONRY - COLOUR: BROWN (FAIRVIEW TAUPE HC-85 BY BENJAMIN MOORE)
- 101 PREFABRICATED PANELIZED & PREFINISHED STONE CLADDING SYSTEM-COLOUR:BEIGE (ELMIRA WHITE HC-84 BY BENJAMIN MOORE)
- 102 PREFABRICATED PANELIZED & PREFINISHED STONE CLADDING SYSTEM-COLOUR:LIGHT GREY (OXFORD WHITE CC-30 BY BENJAMIN MOORE)
- 103 VISION GLASS (COLOUR: CLEAR C/W LIGHT GREEN LOW E COATING)
- 104 BACK-PAINTED GLASS SPANDREL (COLOUR: LIGHT GREY TO MATCH MULLIONS)
- 105 NON-REFLECTIVE METAL SPANDREL PANELS - COLOUR: RANDOM VARIATION TO MATCH BUILDING COLOURS
- 106 CLEAR ANODIZED ALUMINUM GUARD RAIL WITH CLEAR GLAZING & SLAB-EDGE COVER (COLOUR: LIGHT GREY, CLEAR)
- 107 CLEAR ANODIZED ALUMINUM GUARD RAIL WITH FROSTED GLAZING & SLAB-EDGE COVER (COLOUR: LIGHT GREY CLEAR)
- 108 CLEAR ANODIZED STOREFRONT GLAZING (COLOUR: LIGHT GREY, CLEAR)
- 109 CLEAR ANODIZED ALUMINUM WINDOW (COLOUR: LIGHT GREY)
- 111 PREFINISHED METAL CLADDING: LIGHT GREY (OXFORD WHITE CC-30 BY BENJAMIN MOORE)



NO.	DATE	DESCRIPTION
1	2011.08.01	ISSUED FOR PERMIT
2	2012.05.04	ISSUED FOR CONSTRUCTION

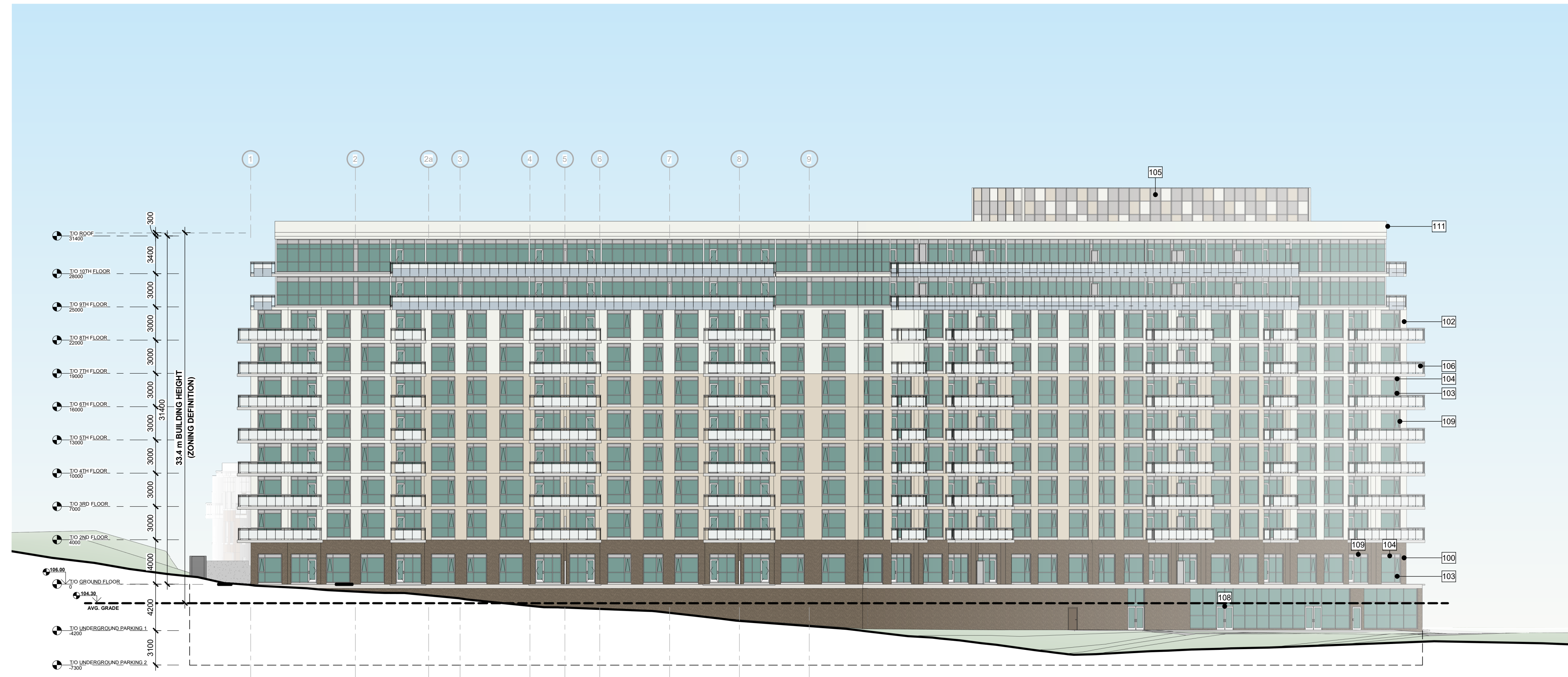
NO.	DATE	DESCRIPTION
1	2011.08.01	ISSUED FOR PERMIT
2	2012.05.04	ISSUED FOR CONSTRUCTION



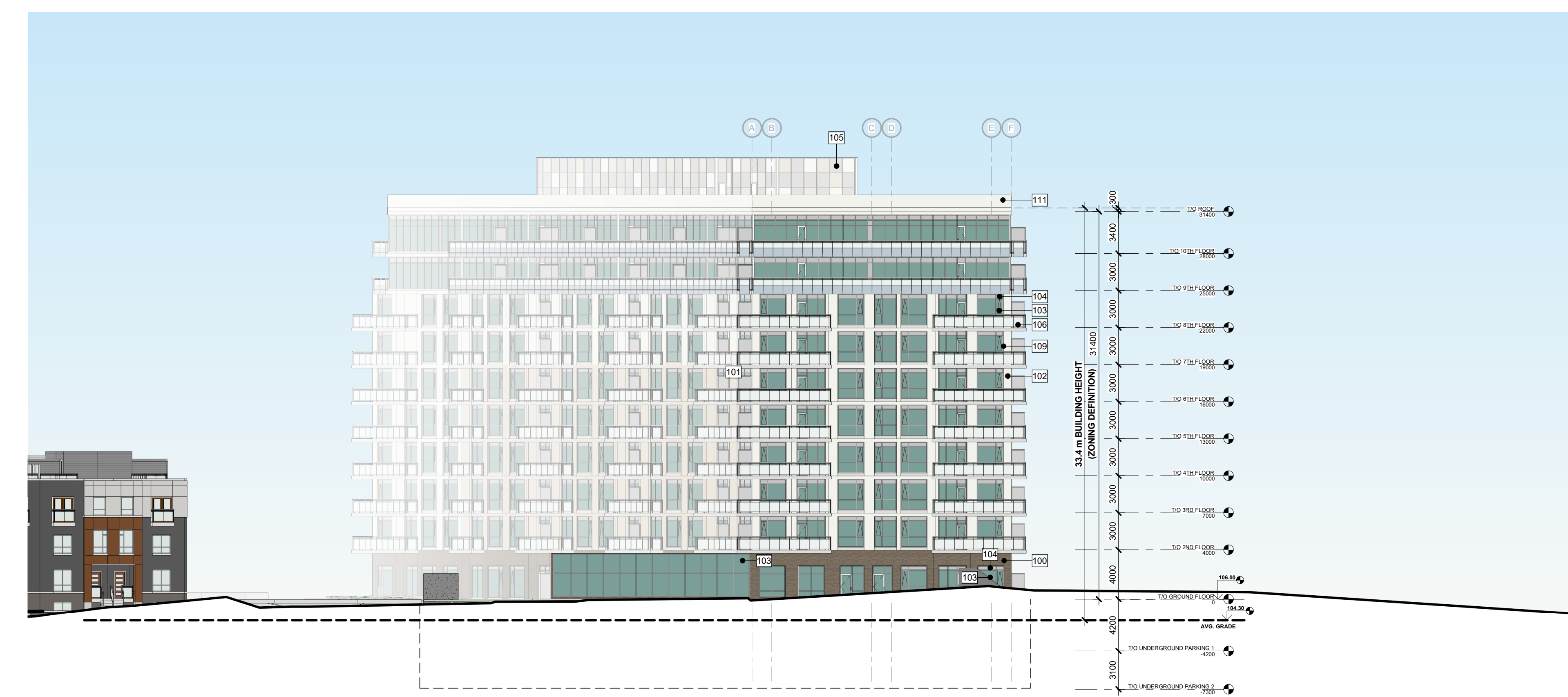
PROJECT NAME:
KANATA MIXED-USE RESIDENTIAL PROJECT
691 CAMPEAU DR. CANATA, ON. K2K 5E9

DRAWING TITLE:
APARTMENT C NORTH AND EAST ELEVATIONS

DRAWN BY: KPB	CHECKED BY: FF
DATE: 20-11-26	SCALE: 1:250
PROJECT NO: F19-049	PARCEL #: 2
DRAWING NO: A-310C	SHEET ISSUE NO: 1



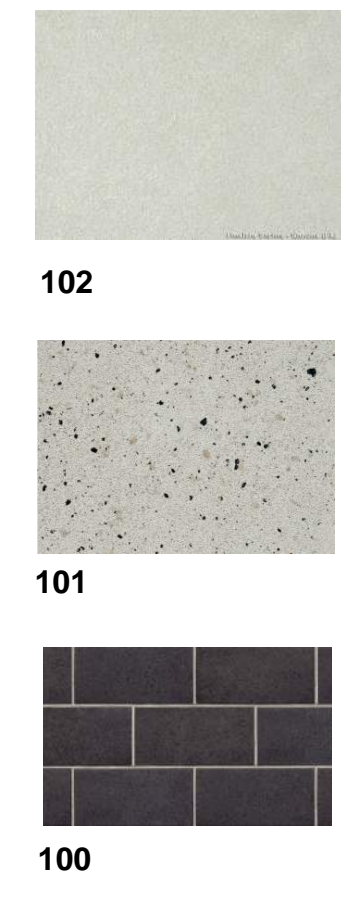
1 South Elevation
A-311C 1 : 250



2 West Elevation
A-311C 1 : 250

EXTERIOR ELEVATION LEGEND

- 100 MANUFACTURED STONE MASONRY - COLOUR: BROWN (FAIRVIEW TAUPE HC-85 BY BENJAMIN MOORE)
- 101 PREFABRICATED PANELIZED & PREFINISHED STONE CLADDING SYSTEM-COLOUR:LIGHT GREY (ELMIRA WHITE HC-84 BY BENJAMIN MOORE)
- 102 PREFABRICATED PANELIZED & PREFINISHED STONE CLADDING SYSTEM-COLOUR:LIGHT GREY (OXFORD WHITE CC-30 BY BENJAMIN MOORE)
- 103 VISION GLASS (COLOUR: CLEAR CW LIGHT GREEN LOW E COATING)
- 104 BACK-PAINTED GLASS SPANDREL (COLOUR: LIGHT GREY TO MATCH MULLIONS)
- 105 NON-REFLECTIVE METAL SPANDREL PANELS - COLOUR: RANDOM VARIATION TO MATCH BUILDING COLOURS
- 106 CLEAR ANODIZED ALUMINUM GUARD RAIL WITH CLEAR GLAZING & SLAB-EDGE COVER (COLOUR: LIGHT GREY, CLEAR)
- 107 CLEAR ANODIZED ALUMINUM GUARD RAIL WITH FROSTED GLAZING & SLAB-EDGE COVER (COLOUR: LIGHT GREY, CLEAR)
- 108 CLEAR ANODIZED STOREFRONT GLAZING (COLOUR: LIGHT GREY, CLEAR)
- 109 CLEAR ANODIZED ALUMINUM WINDOW (COLOUR: LIGHT GREY)
- 111 PREFINISHED METAL CLADDING: LIGHT GREY (OXFORD WHITE CC-30 BY BENJAMIN MOORE)



GENERAL NOTES:
IT IS THE CONTRACTOR'S RESPONSIBILITY TO:
1. USE FIXED DIMENSIONS IN PREFERENCE TO SCALING.
2. VERIFY AND CHECK ALL DIMENSIONS PRIOR TO AND DURING CONSTRUCTION.
3. DETERMINE LOCATIONS OF ALL EXISTING SERVICES.
4. PLANS ARE IN CONFORMANCE WITH THE ONTARIO BUILDING CODE.
ANY CHANGES, DISCREPANCIES OR SUBSTITUTIONS SHALL BE REPORTED TO AND REVIEWED BY THE ARCHITECT BEFORE PROCEEDING.

NO.	DATE	DESCRIPTION
1	2011.05.24	ISSUED FOR PERMIT
2	2011.05.24	ISSUED FOR PERMIT

NO.	DATE	DESCRIPTION
1	2011.05.24	ISSUED FOR PERMIT
2	2011.05.24	ISSUED FOR PERMIT



PROJECT NAME: KANATA MIXED-USE RESIDENTIAL PROJECT
691 CAMPEAU DR. KANATA, ON, K2K 5E9
DRAWING TITLE: APARTMENT C SOUTH AND WEST ELEVATIONS
DRAWN BY: KP
DATE: 20-11-26
PROJECT NO: F19-049
DRAWING NO: A-311C

CHECKED BY: FF
SCALE: 1:250
PARCEL # 2
SHEET ISSUE No. 1
#17421

GENERAL NOTES:
 1. IT IS THE CONTRACTOR'S RESPONSIBILITY TO USE FIXED DIMENSIONS IN PREFERENCE TO SCALING.
 2. VERIFY AND CHECK ALL DIMENSIONS PRIOR TO AND DURING CONSTRUCTION.
 3. DETERMINE LOCATIONS OF ALL EXISTING SERVICES.
 4. PLANS ARE IN CONFORMANCE WITH THE ONTARIO BUILDING CODE.
 ANY CHANGES, DISCREPANCIES OR SUBSTITUTIONS SHALL BE REPORTED TO AND REVIEWED BY THE ARCHITECT BEFORE PROCEEDING.

EXTERIOR ELEVATION LEGEND



- 10 CONCRETE STAIRS - COLOUR: LIGHT GREY
- 11 BRICK MASONRY VENEER - COLOUR: DARK GREY CW DARK GREY GROUT(ONYX)
- 12 CONCRETE MASONRY SILL - COLOUR: LIGHT GREY
- 13 (METAL OR FIBER CEMENT) PANEL CLADDING - COLOUR: LIGHT GREY
- 14 (METAL OR FIBER CEMENT) PANEL CLADDING - COLOUR: SIENNA BROWNS3
- 15 PLANK CLADDING - COLOUR: DARK GREY
- 16 PAINTED METAL EXTERIOR DOOR - COLOUR: SIENNA BROWN
- 17 FRAMED WINDOW CW CLEAR GLAZING - COLOUR: LIGHT GREY
- 18 FRAMED ALUMINUM PRIVACY TERRACE GUARD WALL - COLOUR: LIGHT GREY, FROSTED GLAZING
- 100 MANUFACTURED STONE MASONRY - COLOUR: BROWN (FAIRVIEW TAUPE HC-85 BY BENJAMIN MOORE)
- 106 CLEAR ANODIZED ALUMINUM GUARD RAIL WITH CLEAR GLAZING & SLAB-EDGE COVER (COLOUR: LIGHT GREY, CLEAR)
- 130 PREFINISHED METAL COPING (COLOUR: MATCH ADJACENT)

BLOCKS 1,3,5,6,8,9

BLOCKS 2,4,7



4 TH ELEV @ INNER END (TYP)
 A320 1 : 96



7 TH ELEV @ CAMPEAU (TYP 6-BLOCK)
 A320 1 : 96



5 TH ELEV @ OUTER END (TYP)
 A320 1 : 96



6 TH ELEV @ PARKING (TYP 6-BLOCK)
 A320 1 : 96

NO.	DATE	DESCRIPTION
1	2011.12.28	ISSUED FOR PERMIT
2	2012.05.04	ISSUED FOR CONSTRUCTION

DESIGNED BY	ML
CHECKED BY	FF
DATE	20-11-25
SCALE	1:96
PROJECT NO.	F19-049
SET NO.	



KANATA MIXED-USE RESIDENTIAL PROJECT
 6901 CAMPEAU DR. CANATA, ON. K2K 5E9
TYPICAL TOWNHOUSE ELEVATIONS

GENERAL NOTES:
 1. IT IS THE CONTRACTOR'S RESPONSIBILITY TO USE FIXED DIMENSIONS IN PREFERENCE TO SCALES.
 2. VERIFY AND CHECK ALL DIMENSIONS PRIOR TO AND DURING CONSTRUCTION.
 3. DETERMINE LOCATIONS OF ALL EXISTING SERVICES.
 4. PLANS ARE IN CONFORMANCE WITH THE ONTARIO BUILDING CODE.
 ANY CHANGES, DISCREPANCIES OR SUBSTITUTIONS SHALL BE REPORTED TO AND REVIEWED BY THE ARCHITECT BEFORE PROCEEDING.

NO.	DATE	DESCRIPTION
1	2021.08.01	ISSUED FOR PERMIT
2	2021.08.04	ISSUED FOR PERMIT

DESIGNED BY	ARCHITECT	DATE	2021.08.01
DRAWN BY	ARCHITECT	DATE	2021.08.01
CHECKED BY	ARCHITECT	DATE	2021.08.01
SCALE	AS SHOWN		



PROJECT NAME: **KANATA MIXED-USE RESIDENTIAL PROJECT**
 6901 CAMPEAU DR., KANATA, ON, K2K 5E9
 DRAWING TITLE: **TYPICAL TOWNHOUSE ELEVATIONS**
 DRAWN BY: **Author**
 CHECKED BY: **Checker**
 DATE: **1:96**
 PROJECT No: **F19-049**
 SET No:
 SHEET No: **A321**
 SHEET ISSUE No:

EXTERIOR ELEVATION LEGEND



- 11 BRICK MASONRY VENEER - COLOUR: DARK GREY CW DARK GREY GROUT(ONYX)
- 12 CONCRETE MASONRY SILL - COLOUR: LIGHT GREY
- 13 (METAL OR FIBER CEMENT) PANEL CLADDING - COLOUR: LIGHT GREY
- 14 (METAL OR FIBER CEMENT) PANEL CLADDING - COLOUR: SIENNA BROWN3
- 15 PLANK CLADDING - COLOUR: DARK GREY
- 16 PAINTED METAL EXTERIOR DOOR - COLOUR: SIENNA BROWN
- 17 FRAMED WINDOW CW CLEAR GLAZING - COLOUR: LIGHT GREY
- 18 FRAMED ALUMINUM PRIVACY TERRACE GUARD WALL - COLOUR: LIGHT GREY, FROSTED GLAZING
- 100 MANUFACTURED STONE MASONRY - COLOUR: BROWN (FAIRVIEW TAUPE HC-85 BY BENJAMIN MOORE)
- 106 CLEAR ANODIZED ALUMINUM GUARD RAIL WITH CLEAR GLAZING & SLAB-EDGE COVER (COLOUR: LIGHT GREY, CLEAR)

BLOCKS 1,3,5,6,8,9 BLOCKS 2,4,7



3 TH ELEV @ CAMPEAU (TYP 5-BLOCK)
 A321 1:96



1 TH ELEV @ CAMPEAU (TYP 4-BLOCK)
 A321 1:96



4 TH ELEV @ PARKING SIDE (TYP 5-BLOCK)
 A321 1:96



2 TH ELEV @ PARKING SIDE (TYP 4-BLOCK)
 A321 1:96