

GENERAL NOTES:
 1. IT IS THE CONTRACTOR'S RESPONSIBILITY TO USE FIXED DIMENSIONS IN PREFERENCE TO SCALING.
 2. VERIFY AND CHECK ALL DIMENSIONS PRIOR TO AND DURING CONSTRUCTION.
 3. DETERMINE LOCATIONS OF ALL EXISTING SERVICES.
 4. PLANS ARE IN CONFORMANCE WITH THE ONTARIO BUILDING CODE.
 ANY CHANGES, DISCREPANCIES OR SUBSTITUTIONS SHALL BE REPORTED TO AND REVIEWED BY THE ARCHITECT BEFORE PROCEEDING.

DATE	20-11-26
BY	FF
FOR	1:250
REVISIONS	
NO.	DESCRIPTION
1	ISSUED FOR PERMIT

SCALE	1:250
REVIEW	
DATE	
BY	
FOR	
OTHER	



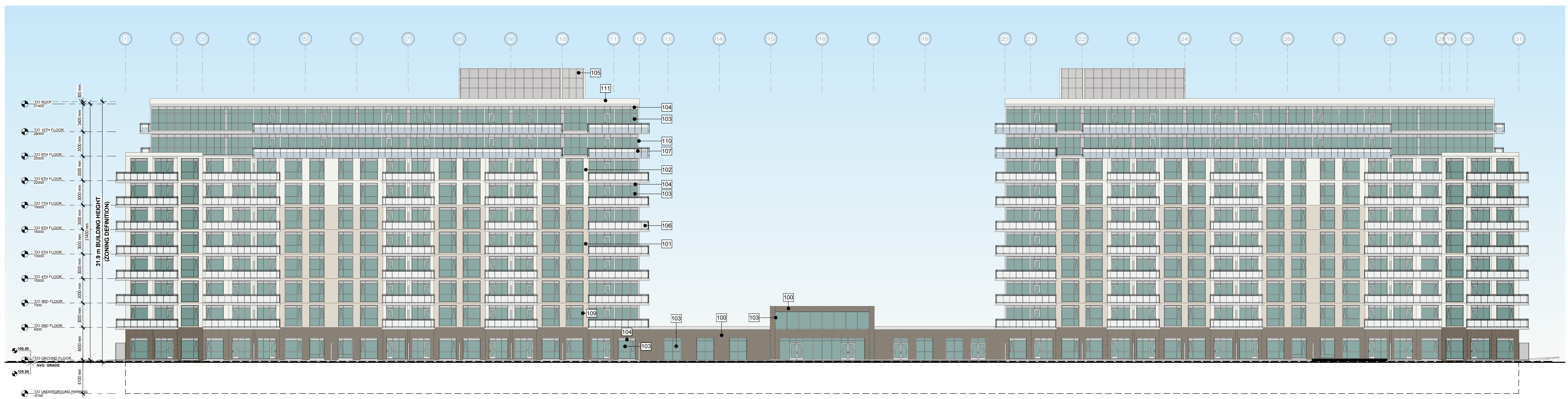
PROJECT NAME:
KANATA MIXED-USE RESIDENTIAL PROJECT
 6301 CAMPEAU DRIVE, OTTAWA

DRAWING TITLE:
APARTMENT A&B SOUTH AND WEST ELEVATIONS

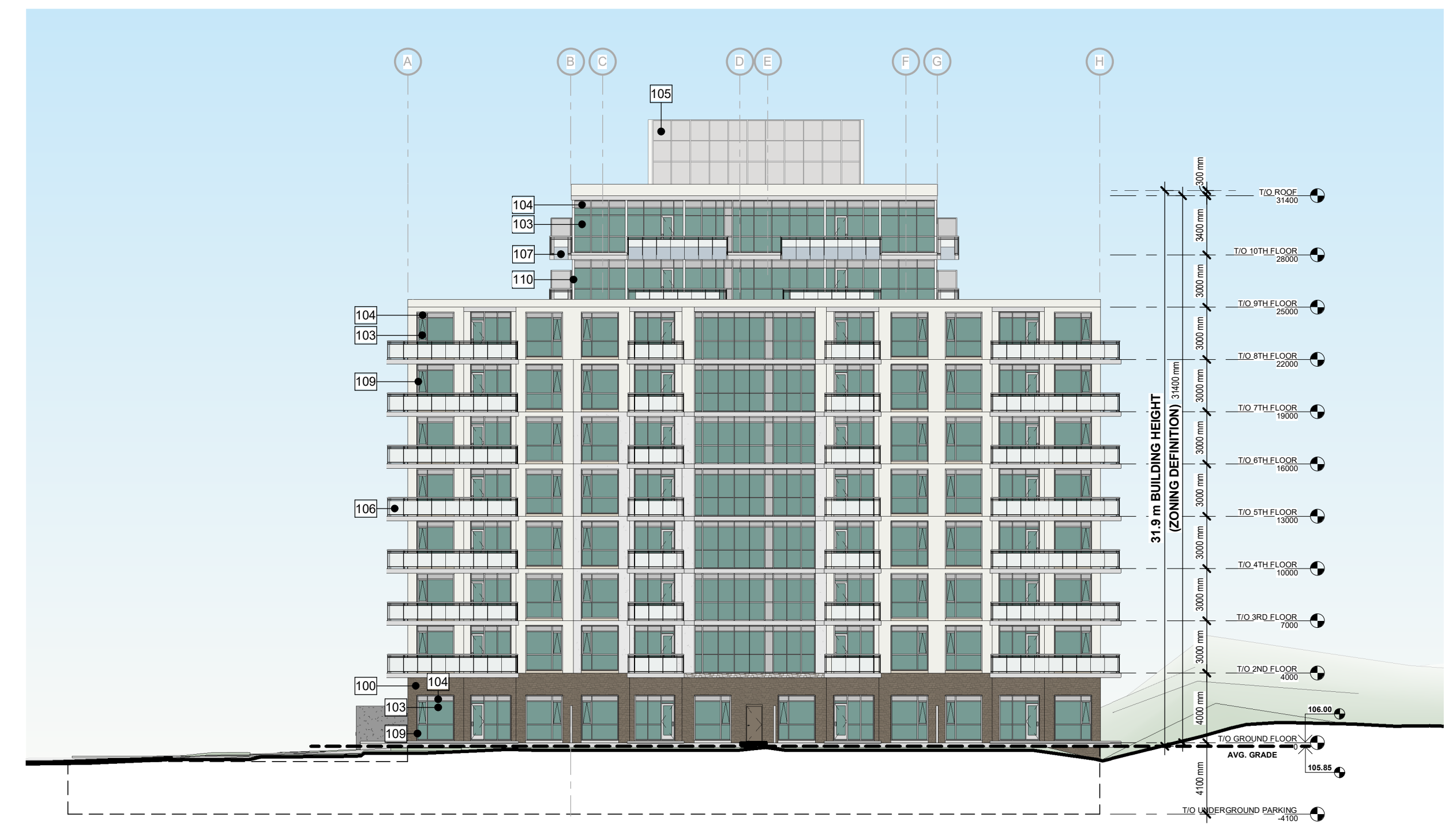
DRAWN BY:	KP	CHECKED BY:	FF
DATE:	20-11-26	SCALE:	1:250
PROJECT NO.:	F19-049	PARCEL #:	1

DRAWING No. **A301A** SHEET ISSUE No. **1**

7-1664 CORNWALL ROAD OAKVILLE, ON L6J 7W5 E: admin@apiconsultants.net P: (905) 337-7249



1 SOUTH ELEVATION
 A301A 1 : 250



2 WEST ELEVATION
 A301A 1 : 250

EXTERIOR ELEVATION LEGEND

- 100 MANUFACTURED STONE MASONRY - COLOUR: BROWN (FAIRVIEW TAUPE HC-85 BY BENJAMIN MOORE)
- 101 PREFABRICATED PANELIZED & PREFINISHED STONE CLADDING SYSTEM-COLOUR: BEIGE (ELMIRA WHITE HC-84 BY BENJAMIN MOORE)
- 102 PREFABRICATED PANELIZED & PREFINISHED STONE CLADDING SYSTEM-COLOUR: LIGHT GREY (OXFORD WHITE CC-30 BY BENJAMIN MOORE)
- 103 VISION GLASS (COLOUR: CLEAR C/W LIGHT GREEN LOW E COATING)
- 104 BACK-PAINTED GLASS SPANDREL (COLOUR: LIGHT GREY TO MATCH MULLIONS)
- 105 NON-REFLECTIVE METAL SPANDREL PANELS - COLOUR: LIGHT GREY TO MATCH MULLIONS)
- 106 CLEAR ANODIZED ALUMINUM GUARD RAIL WITH CLEAR GLAZING & SLAB-EDGE COVER (COLOUR: LIGHT GREY, CLEAR)
- 107 CLEAR ANODIZED ALUMINUM GUARD RAIL WITH FROSTED GLAZING & SLAB-EDGE COVER (COLOUR: LIGHT GREY, CLEAR)
- 108 CLEAR ANODIZED STOREFRONT GLAZING (COLOUR: LIGHT GREY, CLEAR)
- 109 CLEAR ANODIZED ALUMINUM WINDOW (COLOUR: LIGHT GREY)
- 110 CLEAR ANODIZED ALUMINUM WINDOW WALL (COLOUR: LIGHT GREY)
- 111 PREFINISHED METAL CLADDING: LIGHT GREY (OXFORD WHITE CC-30 BY BENJAMIN MOORE)