

NOTES: GENERAL

- DRAWINGS TO BE READ IN CONJUNCTION WITH ARCHITECTURAL AND LANDSCAPE DRAWINGS
- ALL SERVICES, MATERIALS, CONSTRUCTION METHODS AND INSTALLATIONS SHALL BE IN ACCORDANCE WITH THE LATEST STANDARDS AND REGULATIONS OF THE CITY OF OTTAWA STANDARD SPECIFICATIONS AND DRAWINGS, ONTARIO PROVINCIAL SPECIFICATION STANDARD SPECIFICATION (OPSS) AND ONTARIO PROVINCIAL STANDARD DRAWINGS (OPSD), UNLESS OTHERWISE SPECIFIED, TO THE SATISFACTION OF THE CITY AND THE CONSULTANT
- THE POSITION OF EXISTING POLE LINES, CONDUITS, WATERMANS, SEWERS AND OTHER UNDERGROUND AND ABOVEGROUND UTILITIES, STRUCTURES AND APPURTENANCES IS NOT NECESSARILY SHOWN ON THE CONTRACT DRAWING, AND WHERE SHOWN, THE ACCURACY OF THE POSITION OF SUCH UTILITIES AND STRUCTURES IS NOT GUARANTEED. PRIOR TO CONSTRUCTION, THE CONTRACTOR SHALL VERIFY HIMSELF OF THE EXACT LOCATION OF ALL SUCH UTILITIES AND STRUCTURES, AND SHALL ASSUME ALL LIABILITY FOR DAMAGE TO THEM DURING THE COURSE OF CONSTRUCTION. ANY RELOCATION OF EXISTING UTILITIES REQUIRED BY THE DEVELOPMENT OF SUBJECT LANDS IS TO BE UNDERTAKEN AT CONTRACTORS EXPENSE.
- THE CONTRACTOR MUST NOTIFY ALL EXISTING UTILITY COMPANY OFFICIALS FIVE (5) BUSINESS DAYS PRIOR TO START OF CONSTRUCTION AND HAVE ALL EXISTING UTILITIES AND SERVICES LOCATED IN THE FIELD OR EXPOSED PRIOR TO THE START OF CONSTRUCTION, INCLUDING BUT NOT LIMITED TO HYDRO, BELL, CABLE TV, AND CONSUMERS GAS LINES.
- ALL TRENCHING AND EXCAVATIONS TO BE IN ACCORDANCE WITH THE LATEST REVISIONS OF THE OCCUPATIONAL HEALTH AND SAFETY ACT AND REGULATIONS FOR CONSTRUCTION PROJECTS AND AS PER THE RECOMMENDATIONS INCLUDED IN THE GEOTECHNICAL REPORT.
- REFER TO ARCHITECTS PLANS FOR BUILDING DIMENSIONS, LAYOUT AND REMOVALS. REFER TO LANDSCAPE PLAN FOR LANDSCAPED DETAILS AND OTHER RELEVANT INFORMATION. ALL INFORMATION SHALL BE CONFIRMED PRIOR TO COMMENCEMENT OF CONSTRUCTION.
- TOPOGRAPHIC SURVEY COMPLETED AND PROVIDED BY ANNIS, O'SULLIVAN, VOLLEBEKK LTD. DATED ON FEBRUARY 10, 2020. CONTRACTOR TO VERIFY IN THE FIELD PRIOR TO CONSTRUCTION OF ANY WORK AND NOTIFY THE ENGINEER OF ANY DISCREPANCIES.
- ALL ELEVATIONS ARE GEODETIC AND UTILIZE METRIC UNITS. VERIFY THAT JOB BENCHMARKS HAVE NOT BEEN ALTERED OR DISTURBED.
- ALL GROUND SURFACES SHALL BE EVENLY GRADED WITHOUT PONDING AREAS AND WITHOUT LOW POINTS EXCEPT WHERE APPROVED SWALE OR CATCH BASIN OUTLETS ARE PROVIDED.
- ALL EDGES OF DISTURBED PAVEMENT SHALL BE SAWN CUT TO FORM A NEAT AND STRAIGHT LINE PRIOR TO PLACING NEW PAVEMENT. PAVEMENT REINSTATEMENT SHALL BE WITH STEP JOINTS OF 500mm WIDTH MINIMUM.
- ALL DISTURBED AREAS OUTSIDE PROPOSED GRADING LIMITS TO BE RESTORED TO ORIGINAL ELEVATIONS AND CONDITIONS UNLESS OTHERWISE SPECIFIED. ALL RESTORATION SHALL BE COMPLETED WITH THE GEOTECHNICAL REQUIREMENTS FOR BACKFILL AND COMPACTION.
- ABUTTING PROPERTY GRADES TO BE MATCHED UNLESS OTHERWISE SHOWN.
- CONTRACTOR SHALL OBTAIN AND PAY FOR ALL NECESSARY PERMITS AND APPROVALS FROM THE MUNICIPAL AUTHORITIES PRIOR TO COMMENCING CONSTRUCTION.
- MINIMIZE DISTURBANCE TO EXISTING VEGETATION DURING THE EXECUTION OF ALL WORKS.
- REMOVE FROM SITE ALL EXCESS EXCAVATED MATERIAL UNLESS OTHERWISE DIRECTED FROM THE ENGINEER. EXCAVATE AND REMOVE ALL ORGANIC MATERIAL AND DEBRIS LOCATED WITHIN THE PROPOSED BUILDING, PARKING AND ROADWAY LOCATIONS.
- AT PROPOSED UTILITY CONNECTION POINTS AND CROSSINGS (I.E. STORM SEWER, SANITARY SEWER, WATER, ETC.) THE CONTRACTOR SHALL DETERMINE THE PRECISE LOCATION AND DEPTH OF EXISTING UTILITIES AND REPORT ANY DISCREPANCIES OR CONFLICTS TO THE ENGINEER BEFORE COMMENCING WORK.
- CONTRACTOR TO OBTAIN POST-CONSTRUCTION TOPOGRAPHIC SURVEY, COMPLETED BY OLS OR P/ENG CONFIRMING COMPLIANCE WITH DESIGN GRADING AND SERVICING. SURVEY IS TO INCLUDE LOCATION AND INVERTS FOR BURIED UTILITIES.
- ABIDE BY RECOMMENDATIONS OF GEOTECHNICAL REPORT. REPORT ANY VARIATIONS IN OBSERVED CONATIONS FROM THOSE INCLUDED IN REPORT.
- REPORT REFERENCES
I. STORMWATER MANAGEMENT REPORT, PREPARED BY WSP CANADA INC, PROJ. NO. 201-03048-00, NOVEMBER 27, 2020
II. PRELIMINARY SUBSURFACE INVESTIGATION REPORT, PREPARED BY YURI MENDEZ ENGINEERING, REOIRT NO. 44-BH-R0, NOVEMBER 23, 2019

NOTES: EROSION AND SEDIMENT CONTROL

- CONTRACTOR IS RESPONSIBLE FOR ALL INSTALLATION, MONITORING, REPAIR AND REMOVAL OF ALL EROSION AND SEDIMENT CONTROL FEATURES, AND MEETING ASSOCIATED LEED REQUIREMENT**
- PRIOR TO START OF CONSTRUCTION:
 - INSTALL SILT FENCE IN LOCATION SHOWN ON DWG C08 AND C09.
 - INSTALL FILTER FABRIC OR SILT SACK FILTERS IN ALL THE CATCHBASINS AND MANHOLES TO REMAIN DURING CONSTRUCTION WITHIN THE SITE (SEE TYPICAL DETAIL).
 - INSPECT MEASURES IMMEDIATELY AFTER INSTALLATION.
- DURING CONSTRUCTION:
 - MINIMIZE THE EXTENT OF DISTURBED AREAS AND THE DURATION OF EXPOSURE AND IMPACTS TO EXISTING GRADING.
 - PERIMETER VEGETATION TO REMAIN IN PLACE UNTIL PERMANENT STORM WATER MANAGEMENT IS IN PLACE. OTHERWISE IMMEDIATELY INSTALL SILT FENCE WHEN THE EXISTING SITE IS DISTURBED AT THE PERIMETER.
 - PROTECT DISTURBED AREAS FROM OVERLAND FLOW BY PROVIDING TEMPORARY SWALES TO THE SATISFACTION OF THE FIELD ENGINEER. TIE- IN TEMPORARY SWALES TO EXISTING CBS AS REQUIRED.
 - PROVIDE TEMPORARY COVER SUCH AS SEEDING OR MULCHING IF DISTURBED AREA WILL NOT BE REHABILITATED WITHIN 30 DAYS.
 - INSPECT SILT FENCES, FILTER FABRIC FILTERS AND CATCH BASIN SUMPS WEEKLY AND WITHIN 24 HOURS AFTER A STORM EVENT. CLEAN AND REPAIR WHEN NECESSARY.
 - DRAWING TO BE REVIEWED AND REVISED AS REQUIRED DURING CONSTRUCTION.
 - EROSION CONTROL FENCING TO BE ALSO INSTALLED AROUND THE BASE OF ALL STOCKPILES.
 - DO NOT LOCATE TOPSOIL PILES AND EXCAVATION MATERIAL CLOSER THAN 2.5m FROM ANY PAVED SURFACE, OR ONE WHICH IS TO BE PAVED BEFORE THE PILE IS REMOVED. ALL TOPSOIL PILES ARE TO BE SEEDED IF THEY ARE TO REMAIN ON SITE LONG ENOUGH FOR SEEDS TO GROW (LONGER THAN 30 DAYS).
 - CONTROL WIND-BLOWN DUST OFF SITE BY SEEDING TOPSOIL PILES AND OTHER AREAS TEMPORARILY PROVIDE WATERING AS REQUIRED AND TO THE SATISFACTION OF THE ENGINEER.
 - NO ALTERNATE METHODS OF EROSION PROTECTION SHALL BE PERMITTED UNLESS APPROVED BY THE FIELD ENGINEER.
 - CITY ROADWAY AND SIDEWALK TO BE CLEANED OF ALL SEDIMENT FROM VEHICULAR TRACKING AS REQUIRED.
 - DURING WET CONDITIONS, TIRES OF ALL VEHICLES/EQUIPMENT LEAVING THE SITE ARE TO BE SCRAPPED.
 - ANY MUD/MATERIAL TRACKED ONTO THE ROAD SHALL BE REMOVED IMMEDIATELY BY HAND OR RUBBER TIRE LOADER.
 - TAKE ALL NECESSARY STEPS TO PREVENT BUILDING MATERIAL, CONSTRUCTION DEBRIS OR WASTE BEING SPILLED OR TRACKED ONTO ABUTTING PROPERTIES OR PUBLIC STREETS DURING CONSTRUCTION AND PROCEED IMMEDIATELY TO CLEAN UP ANY AREAS SO AFFECTED.
 - ALL EROSION CONTROL STRUCTURE TO REMAIN IN PLACE UNTIL ALL DISTURBED GROUND SURFACES HAVE BEEN STABILIZED EITHER BY PAVING OR RESTORATION OF VEGETATIVE GROUND COVER.
 - THE CONTRACTOR SHALL IMPLEMENT BEST MANAGEMENT PRACTICES, TO PROVIDE FOR PROTECTION OF THE AREA DRAINAGE SYSTEM AND THE RECEIVING WATERCOURSE. DURING CONSTRUCTION ACTIVITIES THE CONTRACTOR ACKNOWLEDGES THAT FAILURE TO IMPLEMENT APPROPRIATE EROSION AND SEDIMENT CONTROL MEASURES MAY BE SUBJECT TO PENALTIES IMPOSED BY ANY APPLICABLE REGULATORY AGENCY.

NOTES: WATERMAIN

- ALL WATERMAIN AND WATERMAIN APPURTANANCES, MATERIALS, CONSTRUCTION AND TESTING METHODS SHALL CONFORM TO THE CURRENT CITY OF OTTAWA AND MINISTRY OF ENVIRONMENT STANDARDS AND SPECIFICATIONS.
- ALL WATERMAIN 300mm DIAMETER AND SMALLER TO BE POLY VINYL CHLORIDE (PVC) CLASS 150 OR 18 MEETING AWWA SPECIFICATION C900.
- WATERMAIN TO BE INSTALLED AT MINIMUM COVER OF 2.4m BELOW FINISHED GRADE. WHERE WATERMANS CROSS OVER OTHER UTILITIES, A MINIMUM 0.30m CLEARANCE SHALL BE MAINTAINED. WHERE WATERMANS CROSS UNDER OTHER UTILITIES, A MINIMUM 0.30m CLEARANCE SHALL BE MAINTAINED. WHERE THE MINIMUM SEPARATION CANNOT BE ACHIEVED, THE WATERMAIN SHALL BE INSTALLED AS PER CITY OF OTTAWA STANDARDS W25 AND W25.2. WHERE 2.4m MINIMUM DEPTH CANNOT BE ACHIEVED, THERMAL INSULATION SHALL BE PROVIDED AS PER CITY OF OTTAWA STANDARD W22. WHERE A WATERMAIN IS IN CLOSE PROXIMITY TO AN OPEN STRUCTURE, THERMAL INSULATION SHALL BE PROVIDED AS PER CITY OF OTTAWA STANDARD W23.
- CONCRETE THRUST BLOCKS AND MECHANICAL RESTRAINTS ARE TO BE INSTALLED AT ALL TEES, BENDS, HYDRANTS, REDUCERS, ENDS OF MAINS AND CONNECTIONS 100mm AND LARGER, IN ACCORDANCE WITH CITY OF OTTAWA STANDARDS W25.3 & W25.4.
- CATHODIC PROTECTION REQUIRED FOR ALL IRON FITTINGS AS PER CITY OF OTTAWA STANDARD W40 & W42.
- ALL VALVES AND VALVE BOXES AND CHAMBERS, HYDRANTS, AND HYDRANT VALVES AND ASSEMBLES SHALL BE INSTALLED AS PER CITY OF OTTAWA STANDARD
- FIRE HYDRANT LOCATION AND INSTALLATION AS PER CITY OF OTTAWA STANDARD W18 & W19. CONTRACTOR TO PROVIDE FLOW TEST AND PAINTING OF NEW HYDRANT IN ACCORDANCE WITH CITY STANDARDS.
- IF WATER MAIN MUST BE DEFLECTED TO MEET ALIGNMENT, ENSURE THAT THE AMOUNT OF DEFLECTION USED IS LESS THAN HALF THAT RECOMMENDED BY THE MANUFACTURER.

NOTES: SANITARY SEWER AND MANHOLES

- ALL SANITARY SEWER, SANITARY SEWER APPURTENANCES AND CONSTRUCTION METHODS SHALL CONFORM TO THE CURRENT CITY OF OTTAWA STANDARDS AND SPECIFICATIONS. PROVIDE CCTV INSPECTION REPORTS FOR ALL NEW SANITARY PIPING. PROVIDE DYE TESTING FOR NEW SERVICES.
- SANITARY SEWER PIPE SIZE 150mm DIAMETER AND GREATER TO BE PVC SDR-35 (UNLESS SPECIFIED OTHERWISE) WITH RUBBER GASKET TYPE JOINTS IN CONFORMANCE WITH CSA B-182.2.3.4.
- SEWER BEDDING AS PER CITY OF OTTAWA DETAIL S6.
- MAINTENANCE HOLE BENCHING AND PIPE OPENING ALTERNATIVES AS PER THE OPSD 701.021
- ANY SANITARY SEWER WITH LESS THAN 2.5m COVER REQUIRES THERMAL INSULATION AS PER CITY OF OTTAWA STANDARD W22, OR APPROVED BY THE ENGINEER.

NOTES: PARKING LOT AND WORK IN PUBLIC RIGHTS OF WAY

- CONTRACTOR TO REINSTATE ROAD CUTS AS PER CITY OF OTTAWA DETAIL R10.
- CONTRACTOR TO PREPARE SUBGRADE, INCLUDING PROOFROLLING, TO THE SATISFACTION OF THE GEOTECHNICAL CONSULTANT PRIOR TO THE COMMENCEMENT OF PLACEMENT OF GRANULAR B MATERIAL.
- FILL TO BE PLACED AND COMPACTED PER THE GEOTECHNICAL REPORT REQUIREMENTS.
- CONTRACTOR TO SUPPLY, PLACE AND COMPACT GRANULAR B MATERIAL IN ACCORDANCE WITH THE RECOMMENDATIONS OF THE GEOTECHNICAL CONSULTANT. CONTRACTOR TO PROVIDE CONSULTANT WITH SAMPLES OF GRANULAR B MATERIAL FOR TESTING AND CERTIFICATION FROM THE GEOTECHNICAL CONSULTANT THAT THE MATERIAL MEETS THE GRADATION REQUIREMENTS SPECIFIED IN THE GEOTECHNICAL REPORT.
- GRANULAR A MATERIAL TO BE PLACED ONLY UPON APPROVAL BY THE GEOTECHNICAL CONSULTANT OF GRANULAR B PLACEMENT.
- CONTRACTOR TO SUPPLY, PLACE AND COMPACT GRANULAR A MATERIAL IN ACCORDANCE WITH THE RECOMMENDATIONS OF THE GEOTECHNICAL CONSULTANT. CONTRACTOR TO PROVIDE CONSULTANT WITH SAMPLES OF GRANULAR A MATERIAL FOR TESTING AND CERTIFICATION FROM THE GEOTECHNICAL CONSULTANT THAT THE MATERIAL MEETS THE GRADATION REQUIREMENTS SPECIFIED IN THE GEOTECHNICAL REPORT.
- ASPHALT MATERIAL TO BE PLACED ONLY UPON APPROVAL BY THE GEOTECHNICAL CONSULTANT OF GRANULAR A PLACEMENT.
- CONTRACTOR TO SUPPLY, PLACE AND COMPACT ASPHALT MATERIAL IN ACCORDANCE WITH THE RECOMMENDATIONS OF THE GEOTECHNICAL CONSULTANT. CONTRACTOR TO PROVIDE CONSULTANT WITH SAMPLES OF ASPHALT MATERIAL FOR TESTING AND CERTIFICATION FROM THE GEOTECHNICAL CONSULTANT THAT THE MATERIAL MEETS THE REQUIREMENTS SPECIFIED IN THE GEOTECHNICAL REPORT.
- CONTRACTOR IS RESPONSIBLE FOR ESTABLISHING LINE AND GRADE IN ACCORDANCE WITH THE PLANS, AND FOR PROVIDING THE CONSULTANT WITH VERIFICATION PRIOR TO PLACEMENT.
- ALL EXCESS MATERIAL TO BE HAULED OFFSITE AND DISPOSED OF AT AN APPROVED DUMP SITE. SHOULD THE CONTRACTOR DISCOVER ANY HAZARDOUS MATERIAL, CONTRACTOR IS TO NOTIFY CONSULTANT. CONSULTANT TO DETERMINE APPROPRIATE DISPOSAL METHOD/LOCATION.
- PAVEMENT STRUCTURE (MATERIAL TYPES AND THICKNESS) FOR HEAVY DUTY AND LIGHT DUTY AREAS TO BE AS SPECIFIED IN THE GEOTECHNICAL REPORT AND SHOWN ON THE PLANS.

NOTES: STORM SEWERS AND STRUCTURES

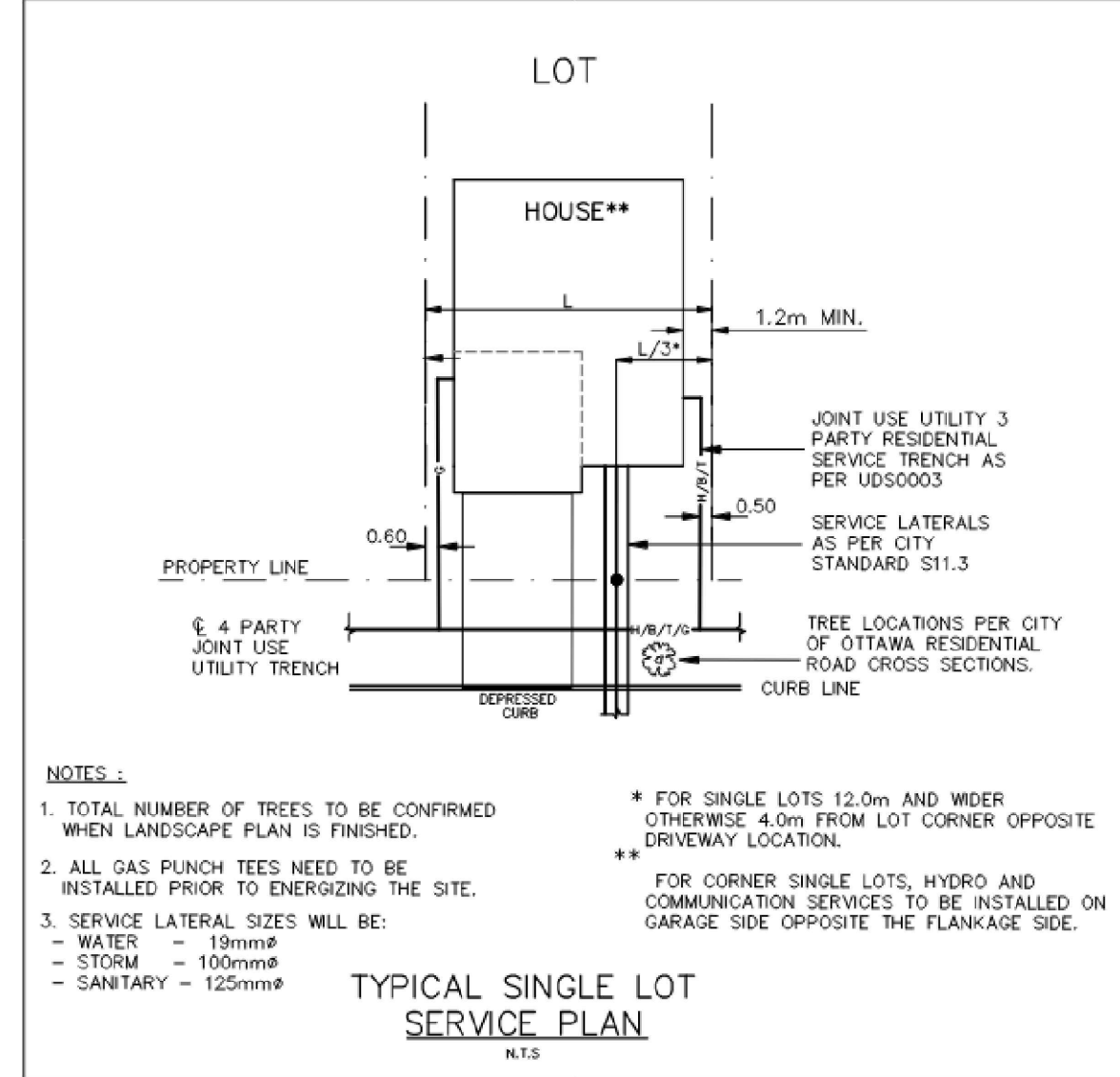
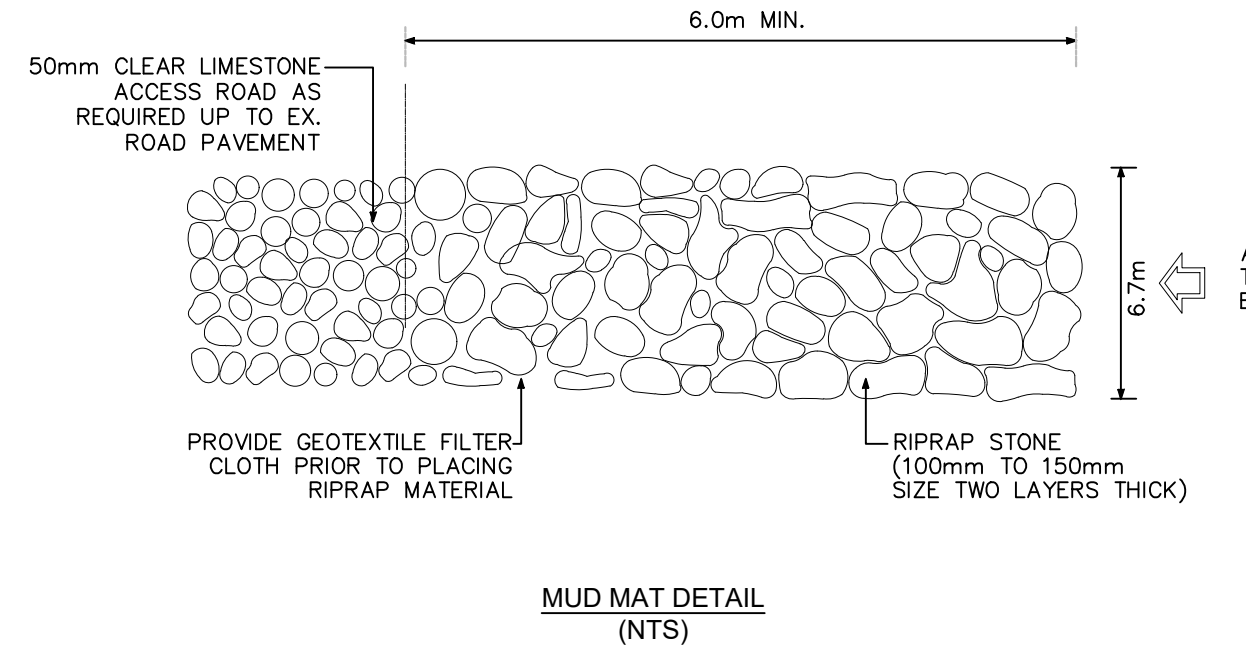
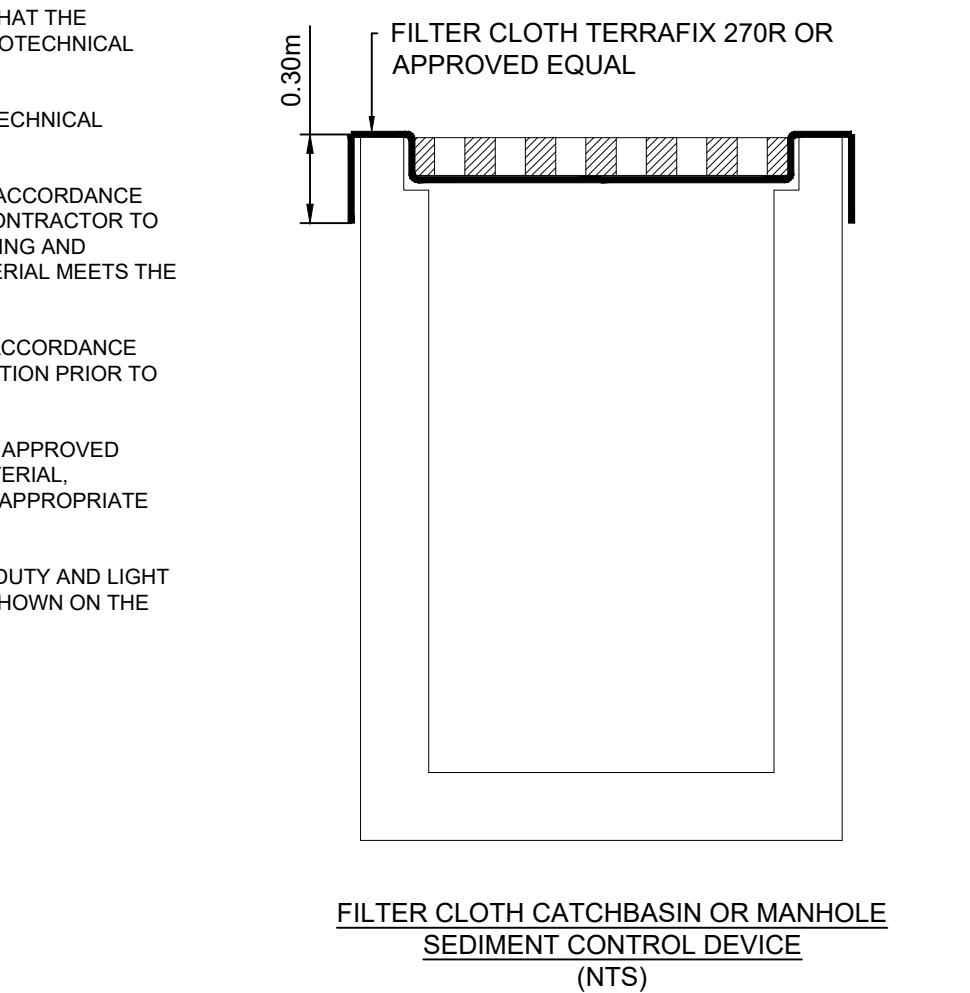
- ALL STORM SEWER MATERIALS AND CONSTRUCTION METHODS SHALL CONFORM TO THE CURRENT CITY OF OTTAWA STANDARDS AND SPECIFICATIONS. PROVIDE CCTV INSPECTION REPORTS FOR ALL NEW STORM SEWERS, SERVICES AND CB LEADS.
- STORM SEWERS 450mm DIAMETER AND SMALLER SHALL BE PVC SDR-35, WITH RUBBER GASKET PER CSA A-257.3.
- SEWER BEDDING AS PER CITY OF OTTAWA DETAIL S6.
- ALL STORM MANHOLES 1200mm IN DIAMETER TO BE AS PER OPSD 701.01. FRAME AND COVER TO BE AS PER CITY OF OTTAWA STANDARD S25 AND S24.1.
- ANY NEW OR EXISTING STORM SEWER WITH LESS THAN 2.0m COVER REQUIRES THERMAL INSULATION AS PER CITY OF OTTAWA STANDARD W22, OR APPROVED BY THE ENGINEER. ADD INSULATION ABOVE EXISTING STORM SEWER BETWEEN EXISTING CBMH101 AND CB1.
- CB IN LANDSCAPE AREAS SHALL BE AS PER CITY OF OTTAWA STANDARD S31.
- ALL CATCHBASIN LEADS TO BE MINIMUM 200mm DIAMETER AT MINIMUM 1.0% SLOPE UNLESS OTHERWISE SPECIFIED.
- STORM CATCHBASINS AS PER OPSD 705.010 AND FRAME/COVER AS PER CITY STANDARD DRAWINGS S19. STORM CBMH'S AS INDICATED IN TABLE WITH SUMP AND FRAME/COVER AS PER OPSD 401.010 TYPE B. SANITARY MH'S AS PER OPSD 701.010 TYPE A BASE WITH BENCHING, AND FRAME/COVER AS PER OPSD 401.010 TYPE A. ADJUSTMENT SECTIONS SHALL BE AS PER OPSD 704.010.
- INSTALLATION OF FLOW CONTROL ICDS TO BE VERIFIED BY QUALITY VERIFICATION ENGINEER RETAINED BY CONTRACTOR.
- COVERS FOR STORM MAINTENANCE HOLES STMH104 AND STMH202 LOCATED IN PROPOSED PONDING AREAS ARE TO BE WATERTIGHT.

NOTES: SERVICES LATERALS

- NO SERVICE LATERALS ARE TO BE DIRECTLY CONNECTED TO A MANHOLE.
- BACKFLOW VALVES FOR SERVICES ARE TO BE PROVIDED AS PER CITY OF OTTAWA STANDARD S14.1 AND S14.2.
- SERVICE LATERALS THAT HAVE INSUFFICIENT COVER ARE TO BE THERMAL INSULATED AS PER CITY OF OTTAWA STANDARD W22.
- SERVICE LATERALS IN PROXIMITY TO OPEN STRUCTURES ARE TO BE INSULATED AS PER CITY OF OTTAWA STANDARD W23.
- SIZE FOR THE SERVICE LATERALS
STM: 100mmØ
SAN: 125mmØ
WAT: 19mmØ
- REFER TO DRAWING C01A FOR TYPICAL SERVICE LATERAL LOCATION FOR TOWNHOUSE.

PAVEMENT STRUCTURE - HEAVY DUTY		
COURSE	MATERIAL	THICKNESS
SURFACE	H3 OR SUPERPAVE 12.5 AC	75mm
BASECOURSE	OPSS GRANULAR 'A'	150mm
SUBBASE	OPSS GRANULAR 'B' TYPE II	400mm

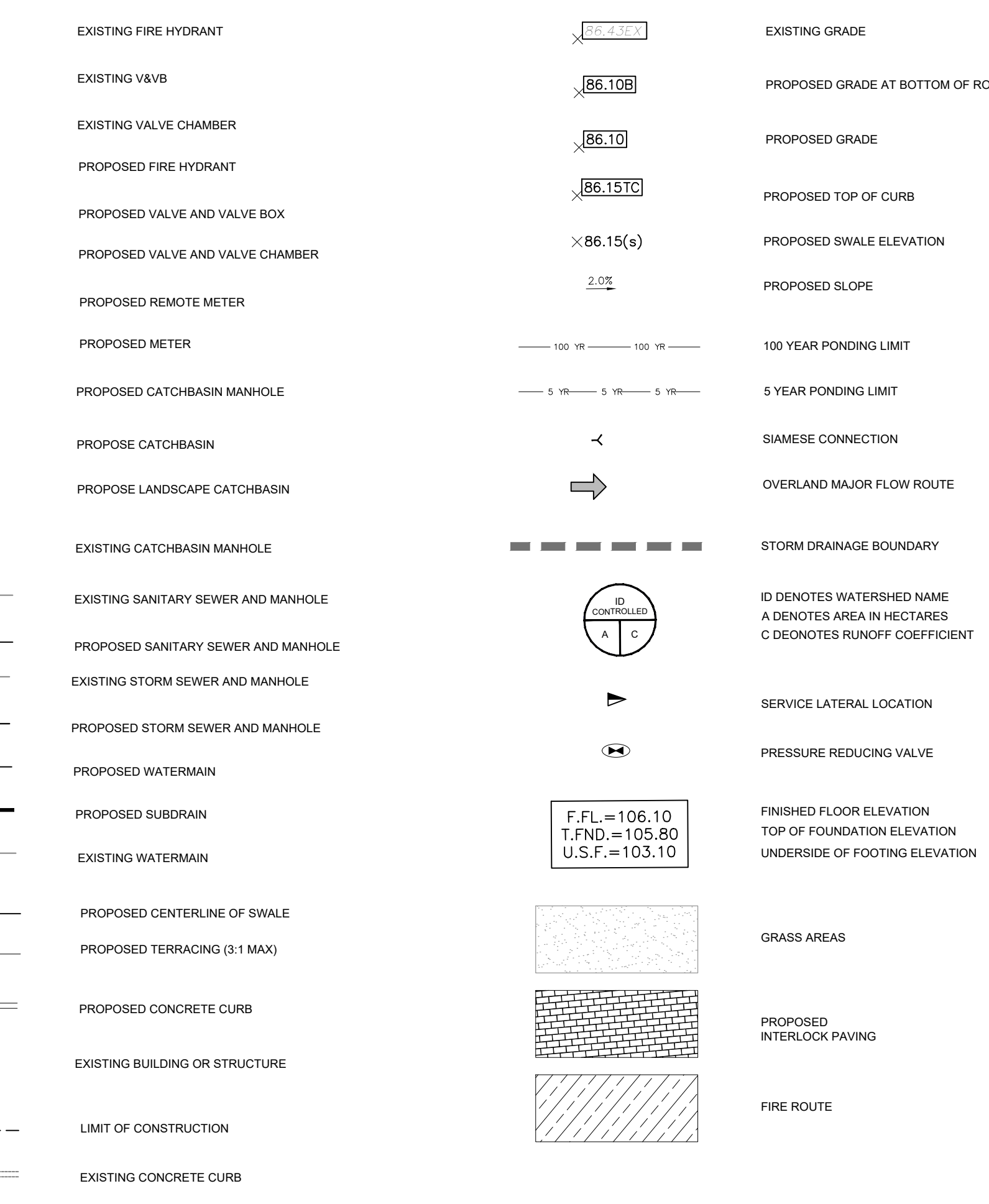
PAVEMENT STRUCTURE - PARKING AREAS		
COURSE	MATERIAL	THICKNESS
SURFACE	H3 OR SUPERPAVE 12.5 AC	50mm
BASECOURSE	OPSS GRANULAR 'A'	150mm
SUBBASE	OPSS GRANULAR 'B' TYPE II	300mm



NOTES:

- TOTAL NUMBER OF TREES TO BE CONFIRMED WHEN LANDSCAPE PLAN IS FINISHED.
 - ALL GAS PUNCH TEES NEED TO BE INSTALLED PRIOR TO ENTERING THE SITE.
 - SERVICE LATERAL SIZES WILL BE:
- WATER - 19mmØ
- STORM - 100mmØ
- SANITARY - 125mmØ
- * FOR SINGLE LOTS 12.0m AND WIDER OTHERWISE, 4.0m FROM LOT CORNER OPPOSITE DRIVEWAY LOCATION.
** FOR CORNER SINGLE LOTS, HYDRO AND COMMUNICATION SERVICES TO BE INSTALLED ON GARAGE SIDE OPPOSITE THE FLANKAGE SIDE.

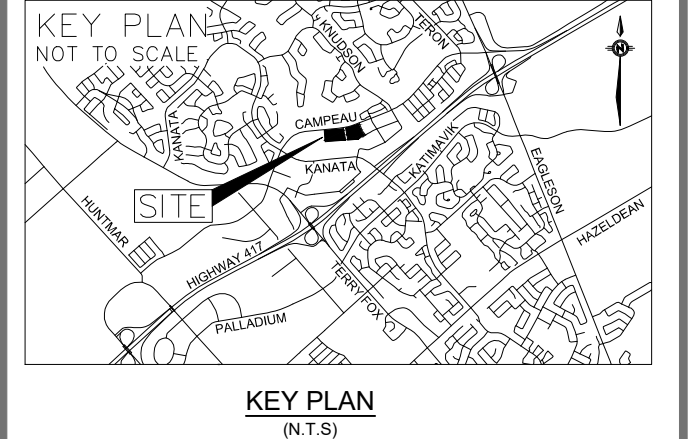
LEGEND:



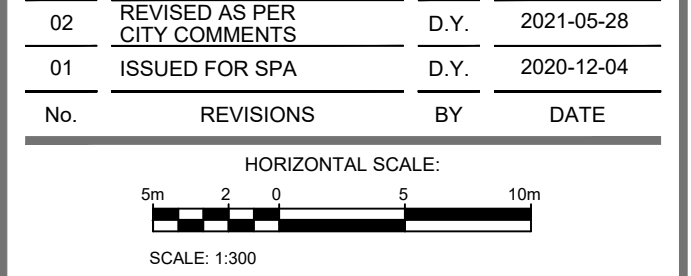
GENERAL NOTES:

THE ENGINEER WAIVES ANY AND ALL RESPONSIBILITY AND LIABILITY FOR PROBLEMS WHICH ARISE FROM FAILURE TO FOLLOW THE PLANS, SPECIFICATIONS AND THE DESIGN INTENT THEY CONVEY, OR FOR PROBLEMS WHICH ARISE FROM OTHERS FAILURE TO OBTAIN AND/OR FOLLOW THE ENGINEERS GUIDANCE WITH RESPECT TO ANY ERRORS, OMISSIONS, INCONSISTENCIES AMBIGUITIES OR CONFLICTS WHICH ARE ALLEGED.

CONTRACTOR TO VERIFY ALL DIMENSIONS AND NOTIFY THE ENGINEER OF ANY DISCREPANCIES BEFORE WORK COMMENCES. DO NOT SCALE DRAWINGS.



No.	REVISIONS	BY	DATE
02	REVISED AS PER CITY COMMENTS	D.Y.	2021-05-28
01	ISSUED FOR SPA	D.Y.	2020-12-04



WSP GROUP INC. 2811 Queensview Dr. Ottawa, ON Canada K2B 8K2
t: 613.829.2800 f: 613.829.8299 www.wspgroup.com

CLIENT: BAYVIEW HOSPITALITY GROUP

ANNIS, O'SULLIVAN, VOLLEBEKK
Ontario Land Surveyors
14 CONROUSE GATE, SUITE 100, NEPEAN, ONTARIO, K2E 7S6
TEL: (613) 727-0850 FAX: (613) 727-1079

DESIGNED BY: D.Y. DRAWN BY: D.Y. APPROVED BY: D.Y./J.J.

PROJECT: 6301 CAMPEAU DRIVE RESIDENTIAL DEVELOPMENT

DRAWING TITLE: NOTES AND DETAILS - 1

PROJECT NO: 201-03048-00 DRAWING NO: C01A

FILENAME: V:\10_13_16\12_2020\10-13-16-2020-03048-00_0301_Campeau_Dev_03_Dwg\10-13-16-2020-03048-00_C_01A.dwg
PLOTDATE: May 31, 2021 2:23am, user:09741

D07-12-20-0171

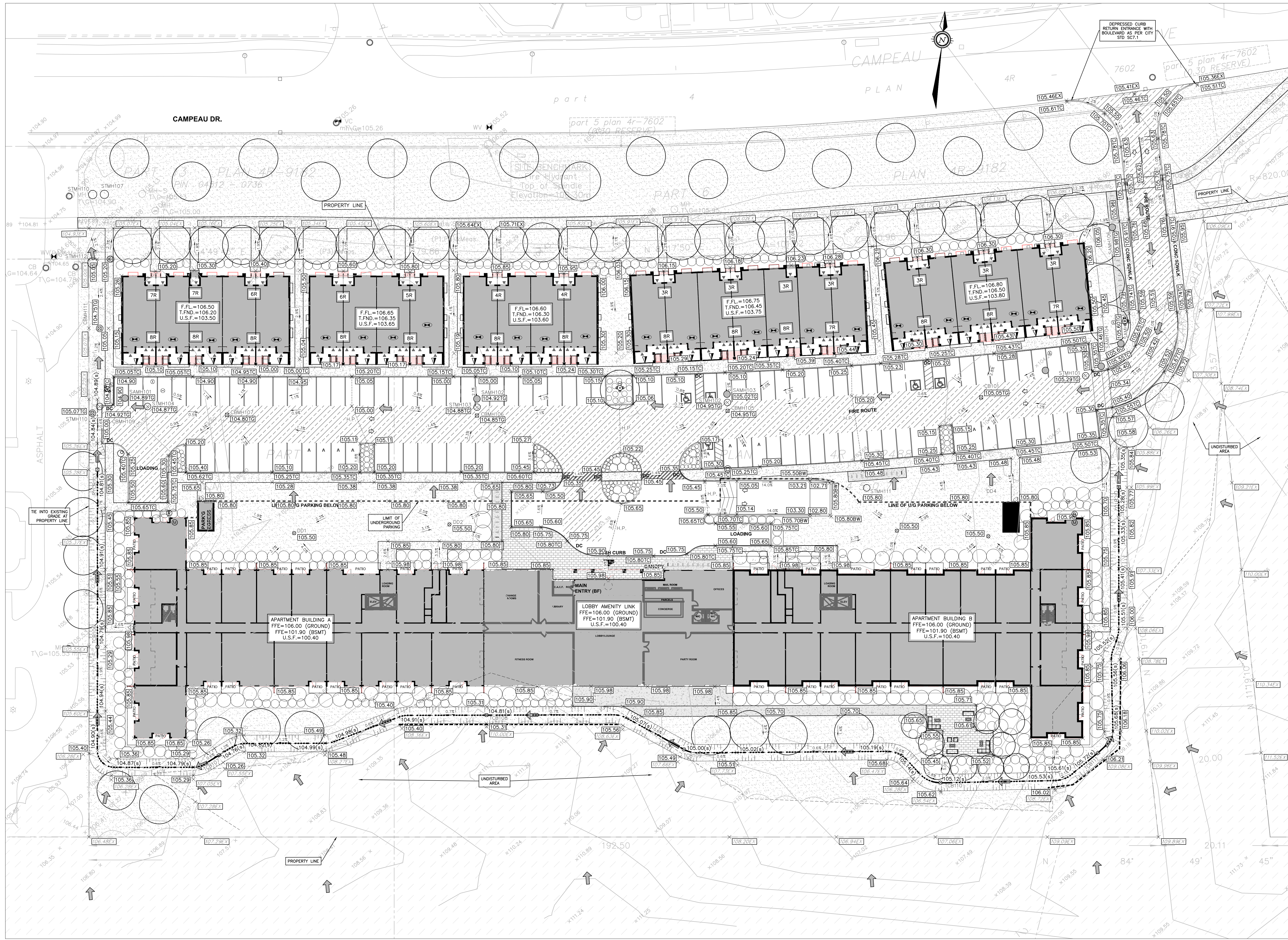
CATCHBASIN/CATCHBASIN MANHOLE AND ICD DATA TABLE													
STRUCTURE ID	AREA ID	STRUCTURE	COVER	TOP OF GRATE	INVERT				DIAMETER (mm)	TYPE	HEAD (m)	FLOW (l/s)	ICD TYPE
					INLET	INLET	INLET	OUTLET					
PARCEL 1													
CB101	A101A-EXT3	OPSD 705.010	S19.1	105.05				103.679	300	PVC SDR-35			
CB102	A-102	OPSD 705.010	S19.1	104.95				103.526	250	PVC SDR-35			
CB103	A-103	OPSD 705.010	S19.1	104.85				103.350	250	PVC SDR-35			
CB104	A-104	OPSD 705.010	S19.1	104.80				103.300	250	PVC SDR-35			
DICB105	A-109a, 109b, EXT2	OPSD 705.010	OPSD 403.010	105.28				104.400	250	PVC SDR-35			
RYCB106	A-108a, 108b, EXT1	OPSD 705.010	S19.1	104.81				103.091	250	PVC SDR-35			
CBMH108		OPSD 701.010	S28.1	104.85	103.371	103.421	103.421	103.221	450	CONC. CL 100-D			
CBMH109		OPSD 701.010	S28.1	104.93				103.174	525	CONC. CL 100-D	0.87	29.37	
CBMH106	A-110	OPSD 701.010	S28.1	104.75				102.083	300	PVC SDR-35			
PARCEL 2													
CBMH203		OPSD 701.010	S28.1	101.80				99.305	99.305	375	PVC SDR-35	1.5	56.16
CBMH206	B-108	OPSD 701.010	S28.1	103.11				99.520	99.500	450	CONC. CL 100-D		
CBMH207	B-106	OPSD 701.010	S28.1	103.45				99.655	99.580	450	CONC. CL 100-D		
CBMH209	B-102	OPSD 701.010	S28.1	104.15				100.004	250	PVC SDR-35			
CBMH210	B-105	OPSD 701.010	S28.1	103.97				99.986	99.936	300	PVC SDR-35		
CBMH211	B-104	OPSD 701.010	S28.1	104.80				100.101	100.071	250	PVC SDR-35		
DICB201	B-EXT1, B-101	OPSD 705.010	OPSD 403.010	100.77				99.770	98.570	200	PVC SDR-35		
CB202	B-109, 110, 113, 114	OPSD 705.010	S19.1	103.30				101.685	101.665	250	PVC SDR-35		
CB203	B-107	OPSD 705.010	S19.1	103.75				99.927	200	PVC SDR-35			
CB204	B-111	OPSD 705.010	S19.1	101.65				99.369	200	PVC SDR-35			
RYCB213		OPSD 705.010	S19.1	104.05				103.050	101.850	250	PVC SDR-35		

STORM STRUCTURE TABLE							
STRUCTURE ID	TOP OF GRATE	INVERT				DESCRIPTION	COVER
		INLET	INLET	INLET	OUTLET		
PARCEL 1							
STMH101	105.29			103.138	103.078	1200mm DIA.	OPSD 701.010 S24.1
STMH102	104.95			102.794	102.774	1200mm DIA.	OPSD 701.010 S24.1
STMH103	104.88			102.576	102.556	1200mm DIA.	OPSD 701.010 S24.1
STMH104	104.85	102.305	102.295	102.245	1200mm DIA.	1200mm DIA.	OPSD 701.010 S24.1
STMH105	104.95	102.205	102.195	102.145	1200mm DIA.	1200mm DIA.	OPSD 701.010 S24.1
CBMH106	104.75			102.830	102.630	1200mm DIA.	OPSD 701.010 S28.1
STMH107	105.05	101.957	101.957	101.957	1500mm DIA.	1500mm DIA.	OPSD 701.011 S24.1
CBMH108	104.85	103.371	103.421	103.421	1200mm DIA.	1200mm DIA.	OPSD 701.010 S28.1
CBMH109	104.93			103.174	103.154	1200mm DIA.	OPSD 701.010 S28.1
STMH110	105.05	103.076	101.954	101.954	1500mm DIA.	1500mm DIA.	OPSD 701.011 S24.1
STMH111	105.65			103.138	103.118	1200mm DIA.	OPSD 701.010 S24.1
STMH112	105.00			103.101	103.101	1800mm DIA.	OPSD 701.012 S24.1
CB101	105.05			103.679	600X600mm	OPSD 705.010	S19.1
CB102	104.95			103.526	600X600mm	OPSD 705.010	S19.1
CB103	104.85			103.350	600X600mm	OPSD 705.010	S19.1
CB104	104.80			103.300	600X600mm	OPSD 705.010	S19.1
DICB105	105.28			104.400	103.347	600X600mm	OPSD 705.010 OPSD 403.010
RYCB106	104.81			103.091	102.309	600X600mm	OPSD 705.010 S19.1
PARCEL 2							
DICB201	100.77			99.770	98.570	600X600mm	OPSD 705.010 OPSD 403.010
CB202	103.30			101.685	101.665	600X600mm	OPSD 705.010 S19.1
CB203	103.75			99.927	99.580	600X600mm	OPSD 705.010 S19.1
CB204	101.65			99.369	99.369	600X600mm	OPSD 705.010 S19.1
RYCB213	104.05			103.050	101.850	600X600mm	OPSD 705.010 S19.1
STMH201	101.85	98.947	98.887	98.887	1200mm DIA.	1200mm DIA.	OPSD 701.010 S24.1
STMH202	101.74	99.293	99.283	99.233	1200mm DIA.	1200mm DIA.	OPSD 701.010 S24.1
CBMH203	101.80			99.305	99.305	1200mm DIA.	OPSD 701.010 S28.1
STMH204	103.06			99.334	99.314	1200mm DIA.	OPSD 701.010 S24.1
STMH205	103.31	101.582	99.474	99.414	1200mm DIA.	1200mm DIA.	OPSD 701.010 S24.1
CBMH206	103.11			99.520	99.500	1200mm DIA.	OPSD 701.010 S28.1
CBMH207	103.45			99.655	99.580	1200mm DIA.	OPSD 701.010 S28.1
STMH208	104.04	99.822	99.847	99.697	1200mm DIA.	1200mm DIA.	OPSD 701.010 S24.1
CBMH209	104.15			100.004	1200mm DIA.	1200mm DIA.	OPSD 701.010 S28.1
CBMH210	103.97			99.986	99.936	1200mm DIA.	OPSD 701.010 S28.1
CBMH211	104.80			100.101	100.071	1200mm DIA.	OPSD 701.010 S28.1
STMH214	102.52			99.776	99.746	1200mm DIA.	OPSD 701.010 S24.1
STMH215	103.25			100.703	100.643	1200mm DIA.	OPSD 701.010 S24.1
STMH216	103.53	100.877	100.837	100.817	1200mm DIA.	1200mm DIA.	OPSD 701.010 S24.1
STMH217	103.52			100.900	100.880	1200mm DIA.	OPSD 701.010 S24.1
STMH218	104.15	101.030	100.990	100.970	1200mm DIA.	1200mm DIA.	OPSD 701.010 S24.1
STMH219	104.43			101.124	1200mm DIA.	1200mm DIA.	OPSD 701.010 S24.1
STMH220	104.48			101.152	1200mm DIA.	1200mm DIA.	OPSD 701.010 S24.1
STMH221	104.46			101.035	1200mm DIA.	1200mm DIA.	OPSD 701.010 S24.1

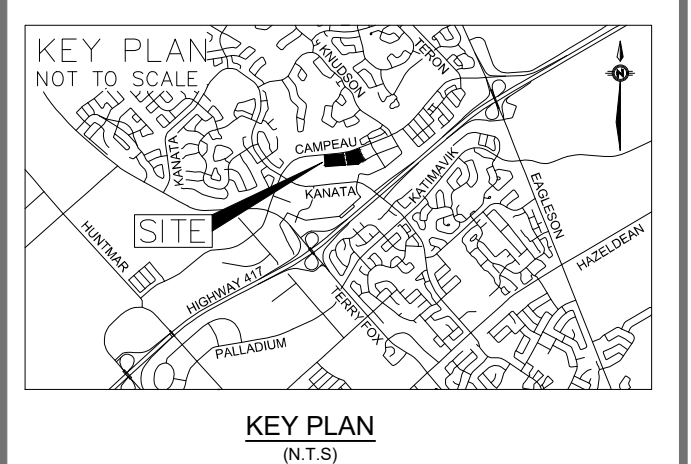
SAN STRUCTURE TABLE							
STRUCTURE ID	TOP OF GRATE ELEVATION	INVERT				DESCRIPTION	COVER
		INLET	INLET	INLET	OUTLET		
PARCEL 1							
SAMH101	104.89			102.997	1200mm DIA.	OPSD-701.010	S24
SAMH102	104.92			102.586	102.566	1200mm DIA.	OPSD-701.010 S24
SAMH103	105.02			102.404	102.384	1200mm DIA.	OPSD-701.010 S24
SAMH104	105.46	102.177	102.141	102.111	1200mm DIA.	OPSD-701.010	S24
SAMH105	105.46			102.141	102.111	1200mm DIA.	OPSD-701.010 S24
SAMH106	105.60			102.092	102.062	1200mm DIA.	OPSD-701.010 S24
SAMH107	105.98			101.986	101.966	1200mm DIA.	OPSD-701.010 S24
PARCEL 2							
SAMH201	104.27			100.709	1200mm DIA.	OPSD-701.010	S24
SAMH202	104.61			100.777	1200mm DIA.	OPSD-701.010	S24
SAMH203	104.20	100.346	100.306	100.286	1200mm DIA.	OPSD-701.010	S24
SAMH204	104.53			100.480	1200mm DIA.	OPSD-701.010	S24
SAMH205	103.53	99.915	100.288	99.895	1200mm DIA.	OPSD-701.010	S24
SAMH206	103.40			99.463	99.403	1200mm DIA.	OPSD-701.010 S24
SAMH207	102.65			98.960	98.940	1200mm DIA.	OPSD-701.010 S24
SAMH208	101.89	98.725	98.685	98.665	1200mm DIA.	OPSD-701.010	S24

PIPE CROSSING TABLE - PARCEL 1							
LINE NO	DESCRIPTION	OBVERT	INVERT	CLEARANCE	OBVERT	INVERT	REMARKS
1	200mmØ W/M	102.850	102.650	0.300	102.350	101.600	EXISTING 750mmØ CONC STM
2	200mmØ W/M	102.220	102.020	0.300	102.770	102.520	EXISTING 250mmØ PVC SAN
3	EXISTING 250mmØ PVC SAN	102.780	102.530	0.260	102.270	101.970	300mmØ PVC STM
4	EXISTING 250mmØ PVC SAN	102.790	102.540	0.292	103.607	103.082	525mmØ CONC STM
5	250mmØ PVC STM	102.464	102.214	0.713	103.702	103.177	525mmØ CONC STM
6	300mmØ PVC STM	102.674	102.374	0.523	103.722	103.197	525mmØ CONC STM
7	200mmØ W/M	102.456	102.256	0.497	103.153	102.953	200mmØ PVC SAN
8	200mmØ W/M	103.057	102.857	0.300	102.557	102.307	250mmØ PVC STM
9	200mmØ PVC STM	103.215	103.015	0.320	103.835	103.535	300mmØ PVC STM
10	250mmØ PVC STM	103.297	103.047	0.655	102.392	102.192	200mmØ PVC SAN
11	200mmØ W/M	102.560	102.360	0.500	103.310	103.060	250mmØ PVC STM
12	200mmØ W/M	102.860	102.660	0.360	102.300	102.100	200mmØ PVC SAN
13	EXISTING 250mmØ PVC SAN	102.190	101.940	1.187	103.577	103.377	200mmØ W/M
33	200mmØ W/M	102.703	102.503	0.500	103.728	103.203	525mmØ CONC STM
34	150mmØ W/M	103.225	103.075	0.827	102.248	102.048	200mmØ PVC SAN

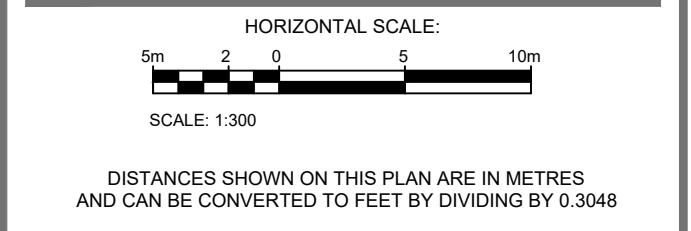
PIPE CROSSING TABLE - PARCEL 2							
LINE NO	DESCRIPTION	OBVERT	INVERT	CLEARANCE	OBVERT	INVERT	REMARKS
14	200mmØ W/M	101.860	101.660	1.093	100.567	100.367	200mmØ PVC SAN
15	200mmØ W/M	101.840	101.640	1.513	100.127	99.877	250mmØ PVC STM
16	200mmØ W/M	101.950	101.750	0.486	101.264	101.014	250mmØ PVC STM
17	200mmØ PVC SAN	100.569	100.369	0.272	100.097	99.847	250mmØ PVC STM
18	200mmØ PVC SAN	100.590	100.390	0.407	101.247	100.997	250mmØ PVC STM
19	250mmØ PVC STM	101.212	100.962	0.807	100.155	99.855	300mmØ PVC STM
20	200mmØ W/M	101.125	100.925	0.765	100.160	99.960	200mmØ PVC SAN
21	200mmØ W/M	101.084	100.884	0.867	100.017	99.567	450mmØ CONC STM
22	200mmØ W/M	100.357	100.157	0.500	101.107	100.857	250mmØ PVC STM
23	200mmØ PVC SAN	100.510	100.310	0.300	100.010	99.560	450mmØ CONC STM
24	200mmØ PVC SAN	100.533	100.333	0.310	101.093	100.843	250mmØ PVC STM
25	200mmØ PVC STM	100.010	99.810	0.786	101.046	100.796	250mmØ PVC STM
26	200mmØ W/M	101.017	100				



GENERAL NOTES:
 THE ENGINEER WAIVES ANY AND ALL RESPONSIBILITY AND LIABILITY FOR PROBLEMS WHICH ARISE FROM FAILURE TO FOLLOW THE PLANS, SPECIFICATIONS AND THE DESIGN INTENT THEY CONVEY, OR FOR PROBLEMS WHICH ARISE FROM OTHERS FAILURE TO OBTAIN AND/OR FOLLOW THE ENGINEERS GUIDANCE WITH RESPECT TO ANY ERRORS, OMISSIONS, INCONSISTENCIES AMBIGUITIES OR CONFLICTS WHICH ARE ALLEGED.
 CONTRACTOR TO VERIFY ALL DIMENSIONS AND NOTIFY THE ENGINEER OF ANY DISCREPANCIES BEFORE WORK COMMENCES. DO NOT SCALE DRAWINGS.



NO.	REVISIONS	BY	DATE
02	REVISED AS PER CITY COMMENTS	D.Y.	2021-05-28
01	ISSUED FOR SPA	D.Y.	2020-12-04



DISTANCES SHOWN ON THIS PLAN ARE IN METRES AND CAN BE CONVERTED TO FEET BY DIVIDING BY 0.3048



NOT VALID UNLESS SIGNED AND DATED

wsp
 2611 Queensview Dr. Ottawa, ON Canada K2B 8K2
 t: 613.829.2800 f: 613.829.8299 www.wspgroup.com

CLIENT
BHG
BAYVIEW
 HOSPITALITY GROUP

SAI SAPIUS ARCHITECTS
API CONSULTANTS
FABIANI

ANNIS, O'SULLIVAN, VOLLEBEKK
 Ontario Land Surveyors
 14 CONCRETE GATE, SUITE 100, WILLOWDALE, ONTARIO, M2E 7S6
 TEL: (416) 727-0850 FAX: (416) 727-1079

DESIGNED BY: D.Y. DRAWN BY: D.Y. APPROVED BY: D.Y./J.J.

PROJECT
 6301 CAMPEAU DRIVE
 RESIDENTIAL DEVELOPMENT

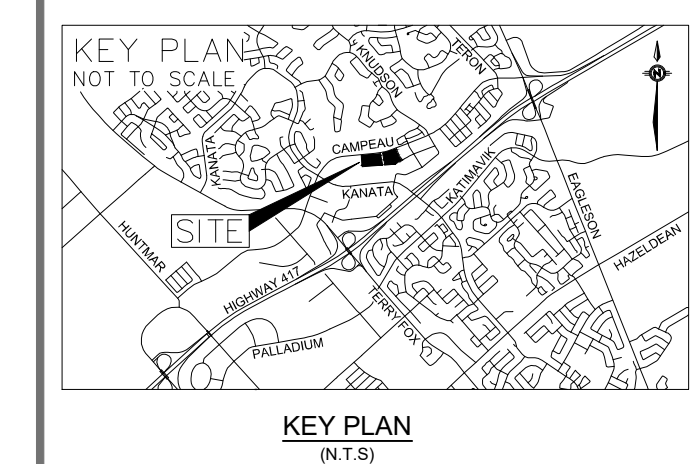
DRAWING TITLE
 GRADING PLAN
 PARCEL 1

PROJECT NO. 201-03048-00 DRAWING NO.

FILENAME: V:\10_13_16\10_13_16_2020\Project\201-03048-00_001\Camppeau Drive\3 Drawings\Working drawings\01 CAD\040_01.dwg
 PLOTDATE: May 31, 2021 2:24am User:099241

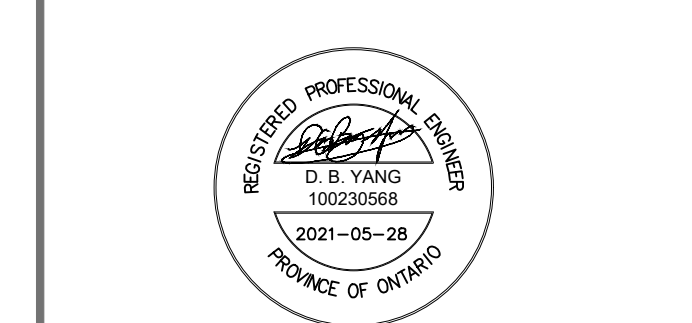


GENERAL NOTES:
 THE ENGINEER WAIVES ANY AND ALL RESPONSIBILITY AND LIABILITY FOR PROBLEMS WHICH ARISE FROM FAILURE TO FOLLOW THE PLANS, SPECIFICATIONS AND THE DESIGN INTENT THEY CONVEY, OR FOR PROBLEMS WHICH ARISE FROM OTHERS FAILURE TO OBTAIN AND/OR FOLLOW THE ENGINEERS GUIDANCE WITH RESPECT TO ANY ERRORS, OMISSIONS, INCONSISTENCIES AMBIGUITIES OR CONFLICTS WHICH ARE ALLEGED.
 CONTRACTOR TO VERIFY ALL DIMENSIONS AND NOTIFY THE ENGINEER OF ANY DISCREPANCIES BEFORE WORK COMMENCES. DO NOT SCALE DRAWINGS.



No.	REVISIONS	BY	DATE
02	REVISED AS PER CITY COMMENTS	D.Y.	2021-05-28
01	ISSUED FOR SPA	D.Y.	2020-12-04

HORIZONTAL SCALE:
 5m 2 0 10m
 SCALE: 1:300
 DISTANCES SHOWN ON THIS PLAN ARE IN METRES AND CAN BE CONVERTED TO FEET BY DIVIDING BY 0.3048



NOT VALID UNLESS SIGNED AND DATED
wsp
 2611 Queensview Dr. Ottawa, ON Canada K2B 8K2
 t: 613.829.2800 f: 613.829.8299 www.wspgroup.com



ANNIS, O'SULLIVAN, VOLLEBEKK
 Ontario Land Surveyors
 14 CONCRETE GATE, SUITE 100, WILLOWDALE, ONTARIO, M2E 7S6
 TEL: (416) 727-0850 FAX: (416) 727-1079

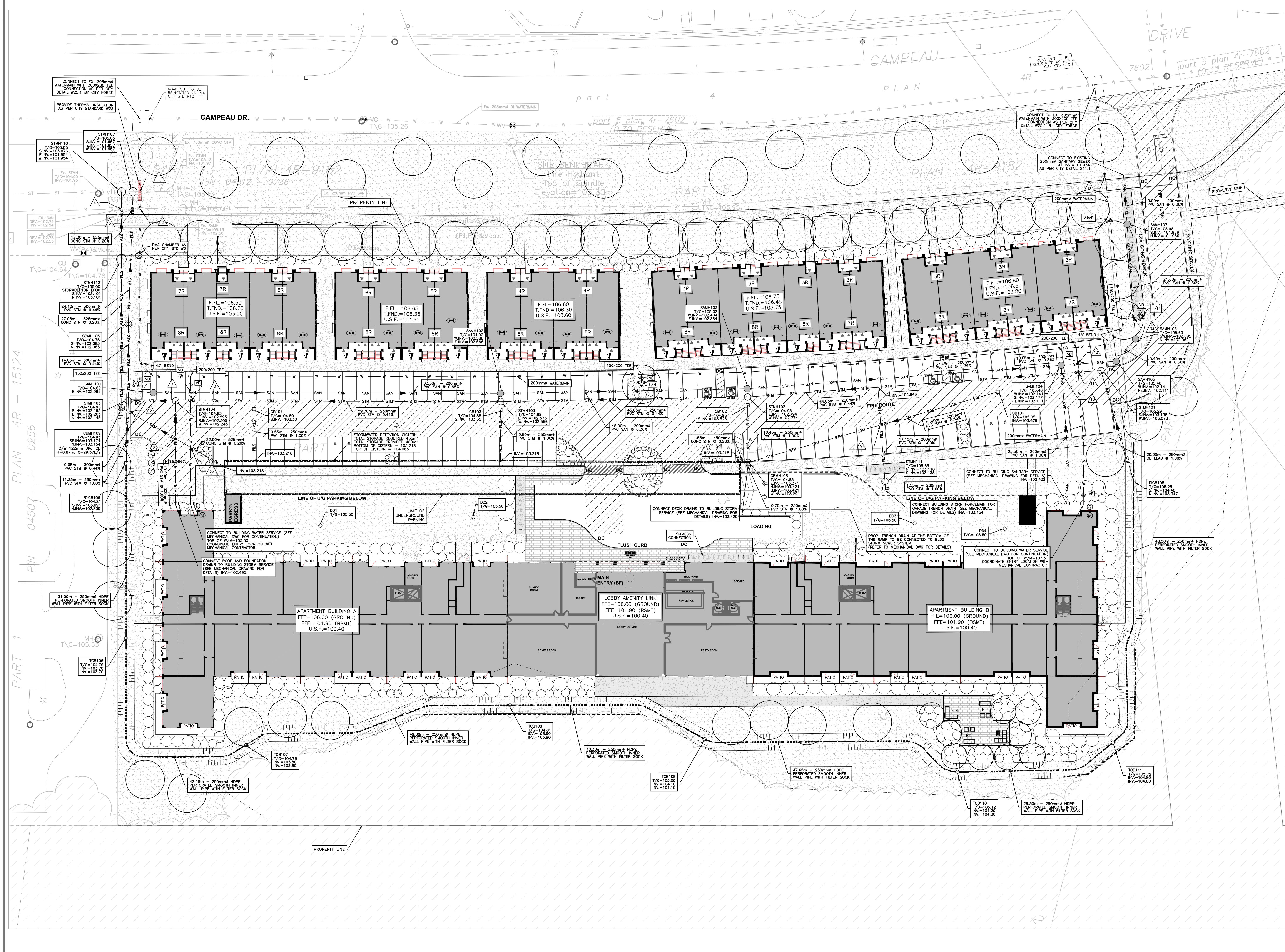
DESIGNED BY: D.Y. DRAWN BY: D.Y. APPROVED BY: D.Y./J.J.

PROJECT
 6301 CAMPEAU DRIVE
 RESIDENTIAL DEVELOPMENT

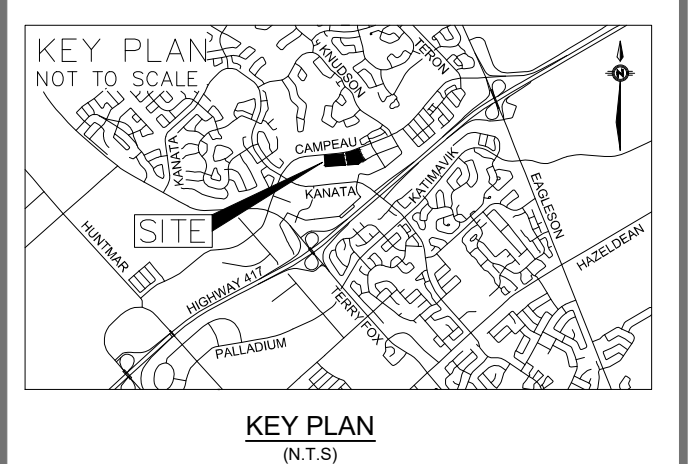
DRAWING TITLE
 GRADING PLAN
 PARCEL 2

PROJECT NO. 201-03048-00 DRAWING NO. C03

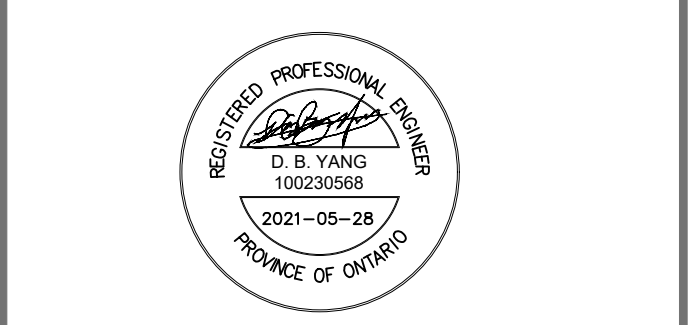
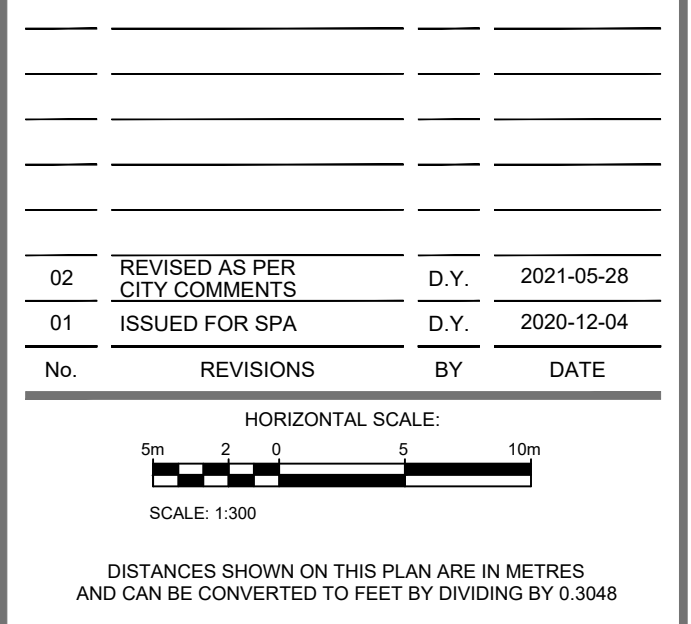
FILENAME: V:\10_13_16\10_2020\Project\201-03048-00_0101\Camppeau_Drive3_Drawing\Working\Drawings\201-03048-00_C_403
 PLOTDATE: May 31, 2021 2:25pm User:099241



GENERAL NOTES:
 THE ENGINEER WAIVES ANY AND ALL RESPONSIBILITY AND LIABILITY FOR PROBLEMS WHICH ARISE FROM FAILURE TO FOLLOW THE PLANS, SPECIFICATIONS AND THE DESIGN INTENT THEY CONVEY, OR FOR PROBLEMS WHICH ARISE FROM OTHERS FAILURE TO OBTAIN AND/OR FOLLOW THE ENGINEERS GUIDANCE WITH RESPECT TO ANY ERRORS, OMISSIONS, INCONSISTENCIES AMBIGUITIES OR CONFLICTS WHICH ARE ALLEGED.
 CONTRACTOR TO VERIFY ALL DIMENSIONS AND NOTIFY THE ENGINEER OF ANY DISCREPANCIES BEFORE WORK COMMENCES. DO NOT SCALE DRAWINGS.



No.	REVISIONS	BY	DATE
02	REVISED AS PER CITY COMMENTS	D.Y.	2021-05-28
01	ISSUED FOR SPA	D.Y.	2020-12-04



wsp
 2611 Queensview Dr. Ottawa, ON Canada K2B 8K2
 t: 613.829.2800 f: 613.829.8299 www.wspgroup.com



ANNIS, O'SULLIVAN, VOLLEBEKK
 Ontario Land Surveyors
 14 CONCRETE GATE, SUITE 100, WILHELM, ONTARIO, K2E 7S6
 TEL: (613) 727-0850 FAX: (613) 727-1079

DESIGNED BY: D.Y. DRAWN BY: D.Y. APPROVED BY: D.Y./J.J.

6301 CAMPEAU DRIVE RESIDENTIAL DEVELOPMENT
 DRAWING TITLE: **SERVICING PLAN PARCEL 1**

PROJECT NO: 201-03048-00 DRAWING NO: C04

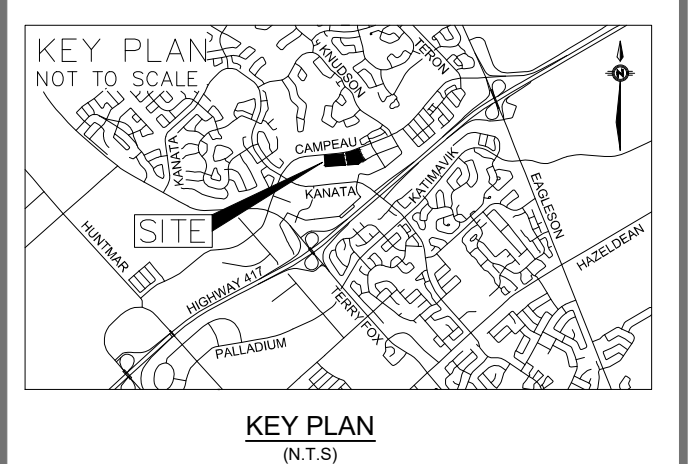
FILENAME: V:\10_13_16\12_2020\Projects\201-03048-00_0301_Campeau_Drive\3_Drawing\Working\Drawings\201-03048-00_C_04.dwg
 PLOTDATE: May 31, 2021 7:25am User:099241

D07-12-20-0171

#18353



GENERAL NOTES:
 THE ENGINEER WAIVES ANY AND ALL RESPONSIBILITY AND LIABILITY FOR PROBLEMS WHICH ARISE FROM FAILURE TO FOLLOW THE PLANS, SPECIFICATIONS AND THE DESIGN INTENT THEY CONVEY, OR FOR PROBLEMS WHICH ARISE FROM OTHERS FAILURE TO OBTAIN AND/OR FOLLOW THE ENGINEERS GUIDANCE WITH RESPECT TO ANY ERRORS, OMISSIONS, INCONSISTENCIES, AMBIGUITIES OR CONFLICTS WHICH ARE ALLEGED.
 CONTRACTOR TO VERIFY ALL DIMENSIONS AND NOTIFY THE ENGINEER OF ANY DISCREPANCIES BEFORE WORK COMMENCES. DO NOT SCALE DRAWINGS.



No.	REVISIONS	BY	DATE
02	REVISED AS PER CITY COMMENTS	D.Y.	2021-05-28
01	ISSUED FOR SPA	D.Y.	2020-12-04

HORIZONTAL SCALE:
 1:300
 DISTANCES SHOWN ON THIS PLAN ARE IN METRES AND CAN BE CONVERTED TO FEET BY DIVIDING BY 0.3048



NOT VALID UNLESS SIGNED AND DATED
wsp
 2611 Queensview Dr. Ottawa, ON Canada K2B 8K2
 t: 613.829.2800 f: 613.829.8299 www.wspgroup.com

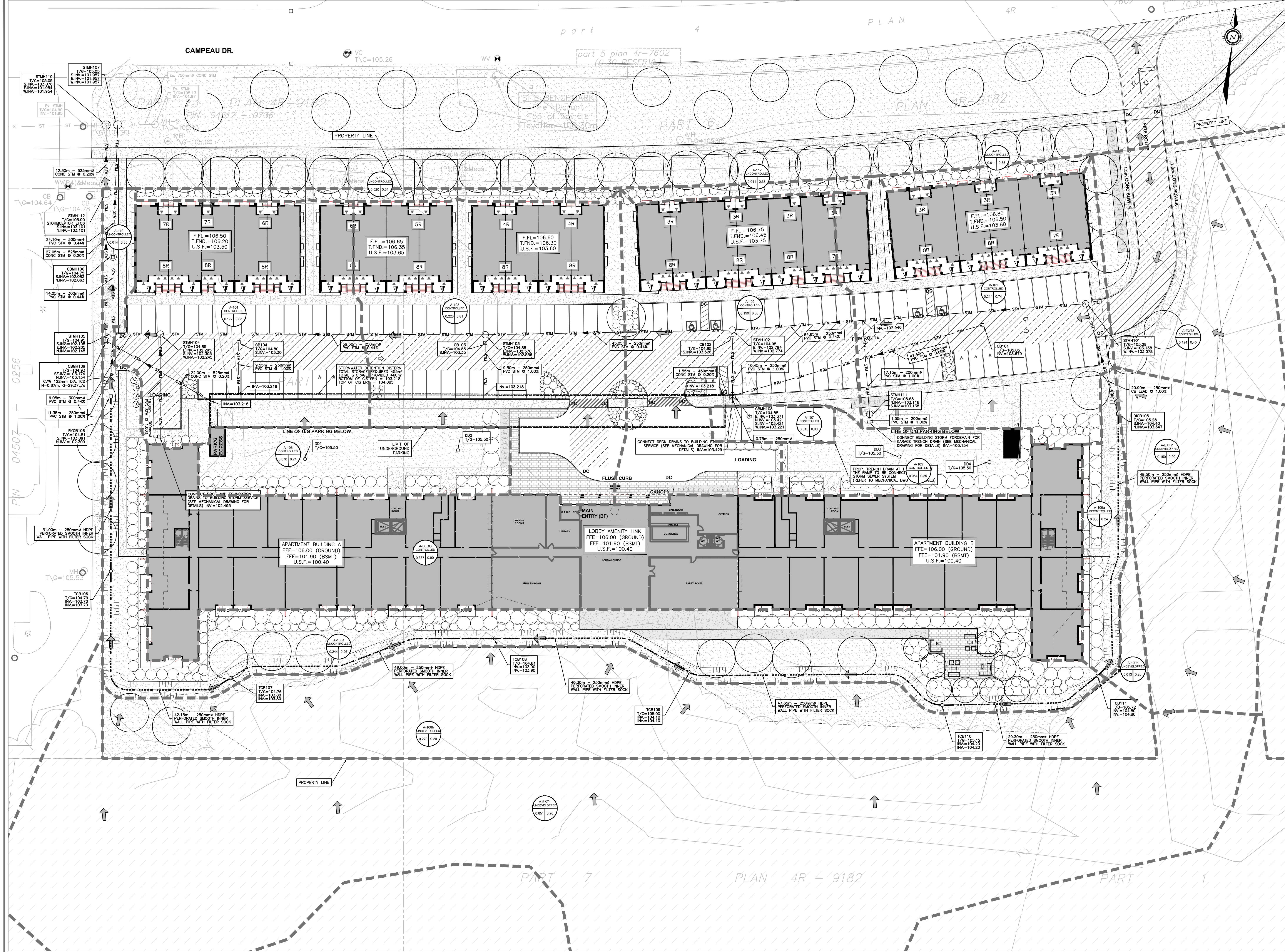


ANNIS, O'SULLIVAN, VOLLEBEKK
 Ontario Land Surveyors
 14 CONCRETE GATE, SUITE 100, WERAN, ONTARIO, K2E 7S6
 TEL: (613) 727-0850 FAX: (613) 727-1079
 DESIGNED BY: D.Y. DRAWN BY: D.Y. APPROVED BY: D.Y./J.J.

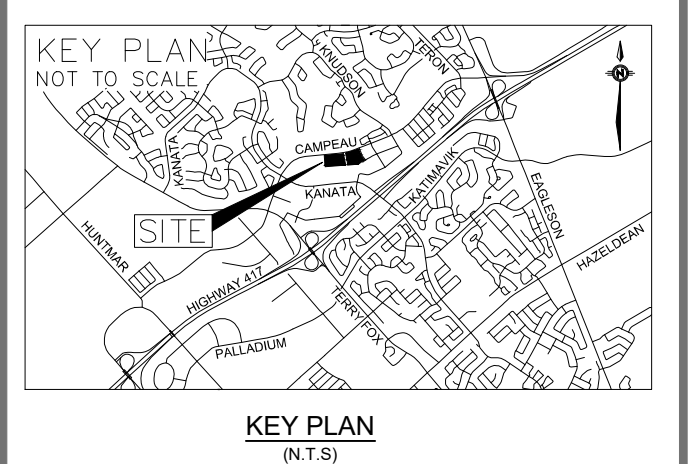
PROJECT: 6301 CAMPEAU DRIVE RESIDENTIAL DEVELOPMENT
 DRAWING TITLE: SERVICING PLAN PARCEL 2
 PROJECT NO: 201-03048-00 DRAWING NO: C05

FILENAME: V:\10_13 ML12 - 2020 Project\201-03048-00 - 0301 Campeau Drive\3 - Drawings\Working drawings\201-03048-00_C-049
 PLOT DATE: May 31, 2021 1:28am, user:099241

D07-12-20-0171



GENERAL NOTES:
 THE ENGINEER WAIVES ANY AND ALL RESPONSIBILITY AND LIABILITY FOR PROBLEMS WHICH ARISE FROM FAILURE TO FOLLOW THE PLANS, SPECIFICATIONS AND THE DESIGN INTENT TO CONVEY, OR FOR PROBLEMS WHICH ARISE FROM OTHERS FAILURE TO OBTAIN AND/OR FOLLOW THE ENGINEERS GUIDANCE WITH RESPECT TO ANY ERRORS, OMISSIONS, INCONSISTENCIES AMBIGUITIES OR CONFLICTS WHICH ARE ALLEGED.
 CONTRACTOR TO VERIFY ALL DIMENSIONS AND NOTIFY THE ENGINEER OF ANY DISCREPANCIES BEFORE WORK COMMENCES. DO NOT SCALE DRAWINGS.



No.	REVISIONS	BY	DATE
02	REVISED AS PER CITY COMMENTS	D.Y.	2021-05-28
01	ISSUED FOR SPA	D.Y.	2021-10-14

HORIZONTAL SCALE:
 SCALE: 1:300

DISTANCES SHOWN ON THIS PLAN ARE IN METRES AND CAN BE CONVERTED TO FEET BY DIVIDING BY 0.3048



NOT VALID UNLESS SIGNED AND DATED

wsp

2611 Queensview Dr. Ottawa, ON Canada K2B 8K2
 t: 613.829.2800 f: 613.829.8299 www.wspgroup.com



ANNIS, O'SULLIVAN, VOLLEBEKK
 Ontario Land Surveyors
 14 CONCRETE GATE, SUITE 100, WERAN, ONTARIO, K2E 7S6
 TEL: (613) 727-0850 FAX: (613) 727-1079

DESIGNED BY: D.Y. DRAWN BY: D.Y. APPROVED BY: D.Y./J.J.

PROJECT
 6301 CAMPEAU DRIVE
 RESIDENTIAL DEVELOPMENT

DRAWING TITLE
 STORM DRAINAGE AREA PLAN
 PARCEL 1

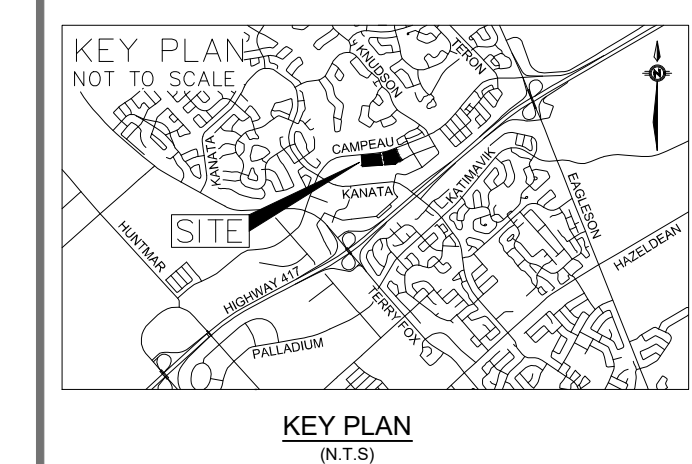
PROJECT NO.
 201-03048-00

DRAWING NO.
 C06

FILENAME: V:\15_13_16\15-200-Project\201-03048-00 - 0301 Campeau Drive\3 Drawings\Working drawings\201-03048-00_C-06.dwg
 PLOTDATE: May 31, 2021 7:28am, User:09241

D07-12-20-0171
 #18353

GENERAL NOTES:
 THE ENGINEER WAIVES ANY AND ALL RESPONSIBILITY AND LIABILITY FOR PROBLEMS WHICH ARISE FROM FAILURE TO FOLLOW THE PLANS, SPECIFICATIONS AND THE DESIGN INTENT OTHERS FAILURE TO OBTAIN AND/OR FOLLOW THE ENGINEERS GUIDANCE WITH RESPECT TO ANY ERRORS, OMISSIONS, INCONSISTENCIES, AMBIGUITIES OR CONFLICTS, WHICH ARE ALLEGED.
 CONTRACTOR TO VERIFY ALL DIMENSIONS AND NOTIFY THE ENGINEER OF ANY DISCREPANCIES BEFORE WORK COMMENCES. DO NOT SCALE DRAWINGS.



No.	REVISIONS	BY	DATE
02	REVISED AS PER CITY COMMENTS	D.Y.	2021-05-28
01	ISSUED FOR SPA	D.Y.	2020-12-04

HORIZONTAL SCALE:
 SCALE: 1:300
 DISTANCES SHOWN ON THIS PLAN ARE IN METRES AND CAN BE CONVERTED TO FEET BY DIVIDING BY 0.3048



NOT VALID UNLESS SIGNED AND DATED

wsp

2611 Queensview Dr. Ottawa, ON Canada K2B 8K2
 t: 613.829.2800 f: 613.829.8299 www.wspgroup.com



ANNIS, O'SULLIVAN, VOLLEBECK
 Ontario Land Surveyors
 14 CONCRETE GATE, SUITE 100, WILLOWDALE, ONTARIO, M2K 2S6
 TEL: (416) 727-0850 FAX: (416) 727-1079

DESIGNED BY: D.Y. DRAWN BY: D.Y. APPROVED BY: D.Y./J.J.

6301 CAMPEAU DRIVE
 RESIDENTIAL DEVELOPMENT

DRAWING TITLE
STORM DRAINAGE AREA PLAN
 PARCEL 2

PROJECT NO. 201-03048-00 DRAWING NO. C07

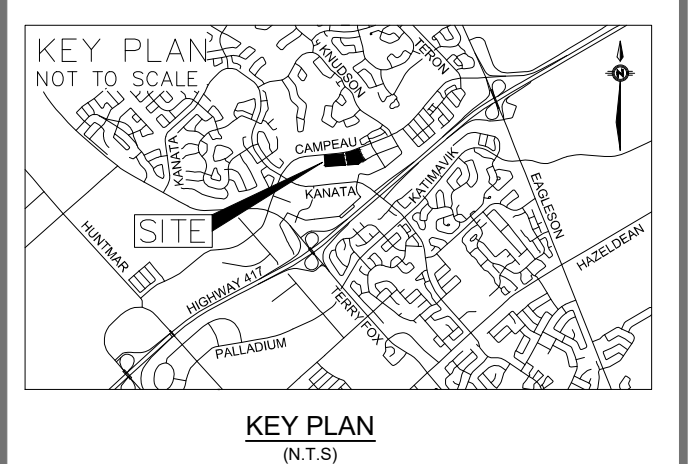


FILENAME: V:\10_13_16\10_13_2020\Projects\201-03048-00_0301\Campeau Drive\Drawings\Working\Drawings\201-03048-00_C_07.dwg
 PLOT DATE: May 31, 2021 2:27pm User:099241

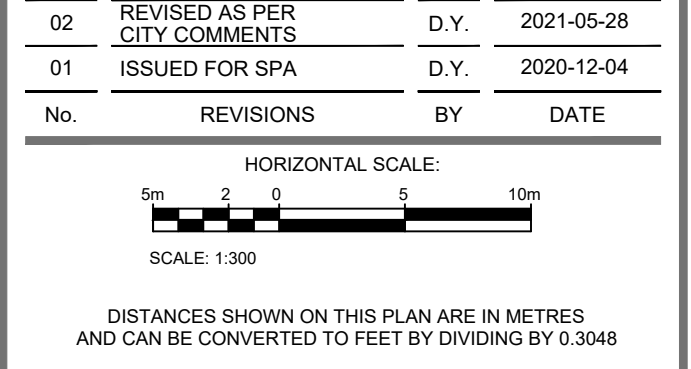
D07-12-20-0171



GENERAL NOTES:
 THE ENGINEER WAIVES ANY AND ALL RESPONSIBILITY AND LIABILITY FOR PROBLEMS WHICH ARISE FROM FAILURE TO FOLLOW THE PLANS, SPECIFICATIONS AND THE DESIGN INTENT THEY CONVEY, OR FOR PROBLEMS WHICH ARISE FROM OTHERS FAILURE TO OBTAIN AND/OR FOLLOW THE ENGINEERS GUIDANCE WITH RESPECT TO ANY ERRORS, OMISSIONS, INCONSISTENCIES AMBIGUITIES OR CONFLICTS WHICH ARE ALLEGED.
 CONTRACTOR TO VERIFY ALL DIMENSIONS AND NOTIFY THE ENGINEER OF ANY DISCREPANCIES BEFORE WORK COMMENCES. DO NOT SCALE DRAWINGS.



No.	REVISIONS	BY	DATE
02	REVISED AS PER CITY COMMENTS	D.Y.	2021-05-28
01	ISSUED FOR SPA	D.Y.	2020-12-04



NOT VALID UNLESS SIGNED AND DATED

wsp

2611 Queensview Dr. Ottawa, ON Canada K2B 8K2
 t: 613.829.2800 f: 613.829.8299 www.wspgroup.com



ANNIS, O'SULLIVAN, VOLLEBEKK
 Ontario Land Surveyors
 14 CONGRESS GATE, SUITE 100, WILLOWDALE, ONTARIO, K2E 7S6
 TEL: (416) 727-0850 FAX: (416) 727-1079

DESIGNED BY: D.Y. DRAWN BY: D.Y. APPROVED BY: D.Y./J.J.

**6301 CAMPEAU DRIVE
 RESIDENTIAL DEVELOPMENT**

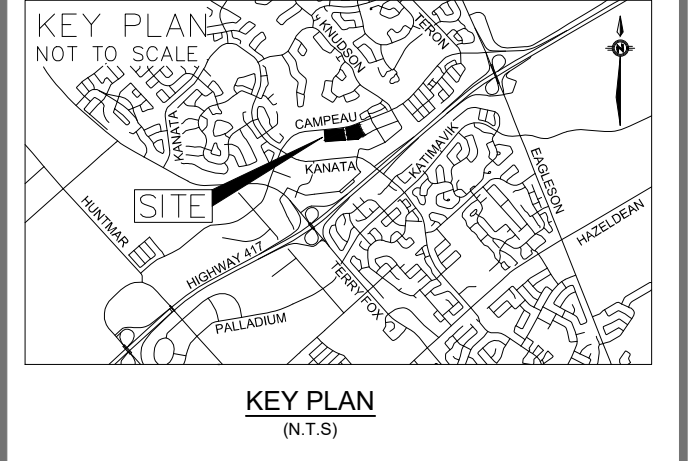
DRAWING TITLE
**EROSION AND SEDIMENTATION
 CONTROL PLAN
 PARCEL 1**

PROJECT NO. 201-03048-00 DRAWING NO. C08

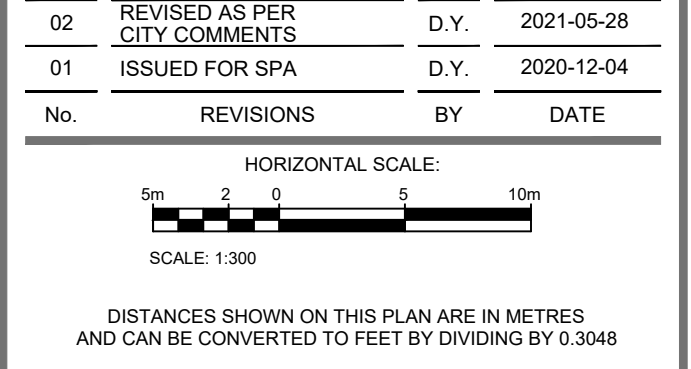
FILENAME: V:\10_13_16\10_13_16\2020\Phase2\201-03048-00_0301 Campeau Drive3 - Drawings\Working Drawings\201-03048-00_C_08.rvt
 PLOTTED: May 31, 2021 1:28pm, User: 099241

- LEGEND**
- LIGHT DUTY SILT FENCE AS PER OPSD-219.110
 - SNOW FENCE
 - ROCK CHECK DAM AS PER OPSD-219.211
 - STRAW BALE CHECK DAM AS PER OPSD-219.180
 - FILTER CLOTH PLACED UNDER CB AND CSMH COVER

GENERAL NOTES:
 THE ENGINEER WAIVES ANY AND ALL RESPONSIBILITY AND LIABILITY FOR PROBLEMS WHICH ARISE FROM FAILURE TO FOLLOW THE PLANS, SPECIFICATIONS AND THE DESIGN INTENT THEY CONVEY, OR FOR PROBLEMS WHICH ARISE FROM OTHERS' FAILURE TO OBTAIN AND/OR FOLLOW THE ENGINEER'S GUIDANCE WITH RESPECT TO ANY ERRORS, OMISSIONS, INCONSISTENCIES, AMBIGUITIES OR CONFLICTS WHICH ARE ALLEGED.
 CONTRACTOR TO VERIFY ALL DIMENSIONS AND NOTIFY THE ENGINEER OF ANY DISCREPANCIES BEFORE WORK COMMENCES. DO NOT SCALE DRAWINGS.



No.	REVISIONS	BY	DATE
02	REVISED AS PER CITY COMMENTS	D.Y.	2021-05-28
01	ISSUED FOR SPA	D.Y.	2020-12-04



NOT VALID UNLESS SIGNED AND DATED
wsp
 2611 Queensview Dr. Ottawa, ON Canada K2B 8K2
 t: 613.829.2800 f: 613.829.8299 www.wspgroup.com

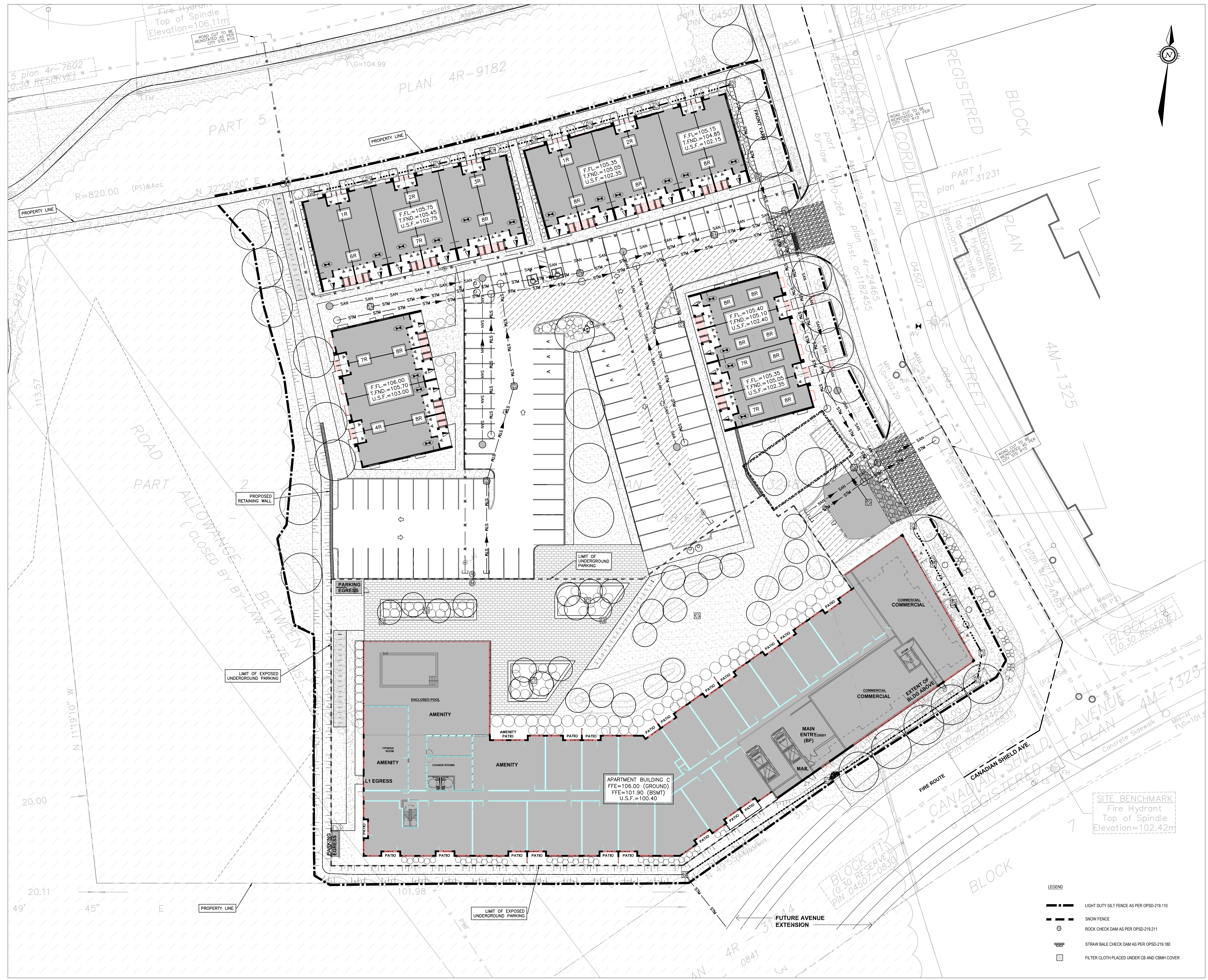


ANNIS, O'SULLIVAN, VOLLEBEKK
 Ontario Land Surveyors
 14 CONCORSE GATE, SUITE 100, WILLOWDALE, ONTARIO, K2E 7S6
 TEL: (613) 727-0850 FAX: (613) 727-1079
 DESIGNED BY: D.Y. DRAWN BY: D.Y. APPROVED BY: D.Y./J.J.

PROJECT
**6301 CAMPEAU DRIVE
 RESIDENTIAL DEVELOPMENT**
 DRAWING TITLE
**EROSION AND SEDIMENTATION
 CONTROL PLAN
 PARCEL 2**

PROJECT NO. 201-03048-00 DRAWING NO. C09

#18353



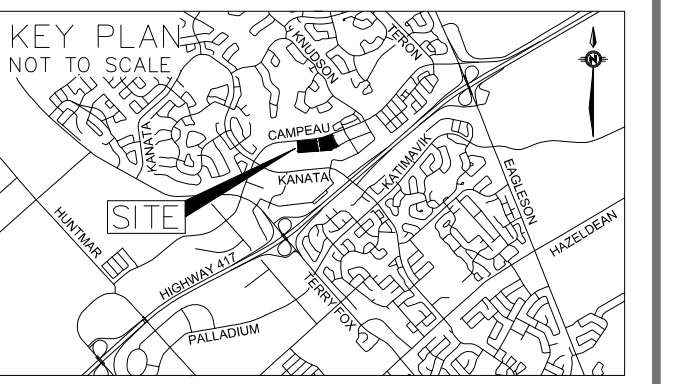
- LEGEND**
- LIGHT DUTY SILT FENCE AS PER OPSD-219-110
 - SNOW FENCE
 - ROCK CHECK DAM AS PER OPSD-219-211
 - STRAW BALE CHECK DAM AS PER OPSD-219-180
 - FILTER CLOTH PLACED UNDER CB AND CBM COVER

FILENAME: V:\10_13_16\10_2020\Projects\201-03048-00-001\Campeau Drive\3 - Drawings\Working Drawings\201-03048-00_C_489
 PLOT DATE: May 31, 2021 1:22:38am User:09241

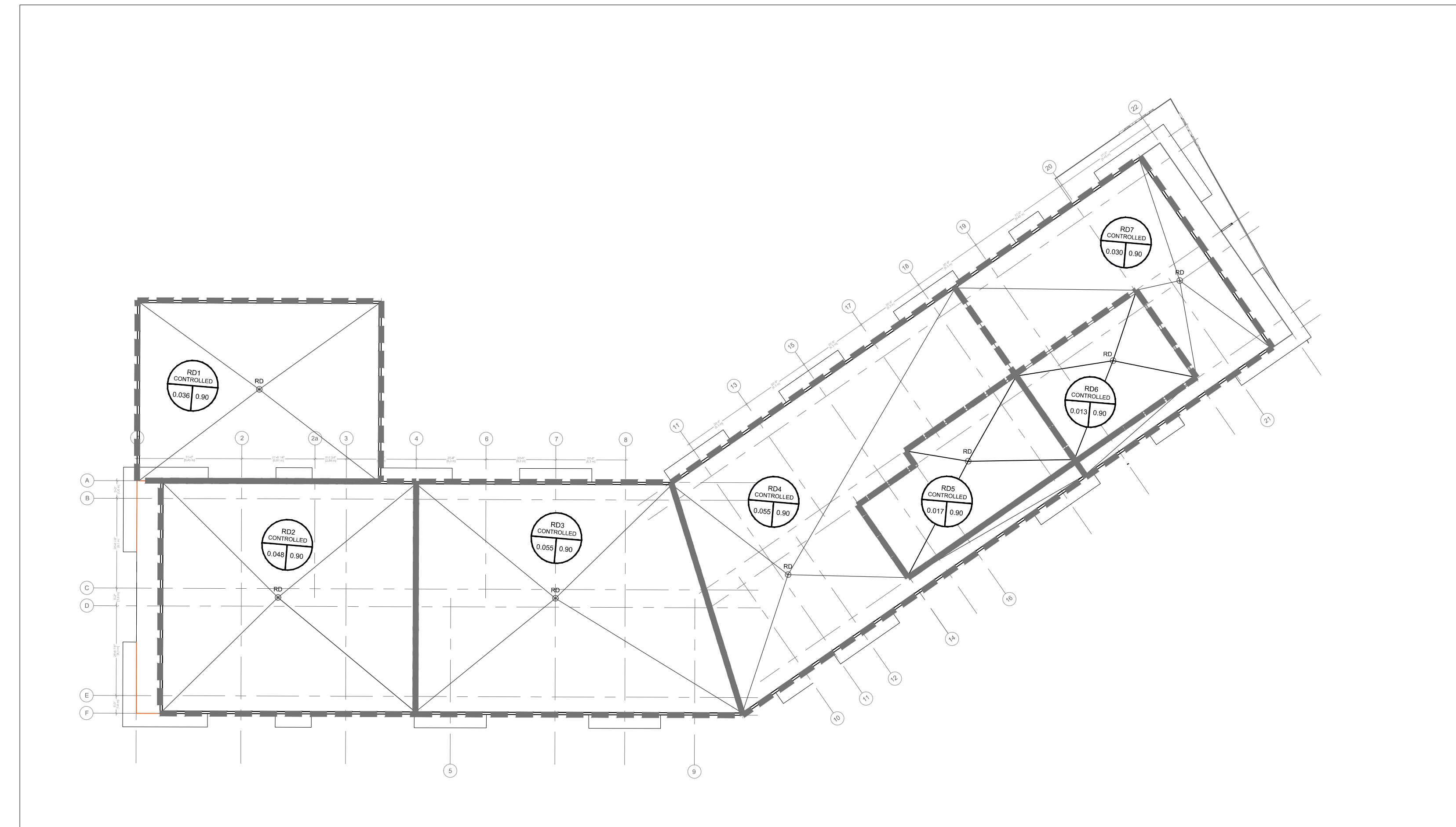
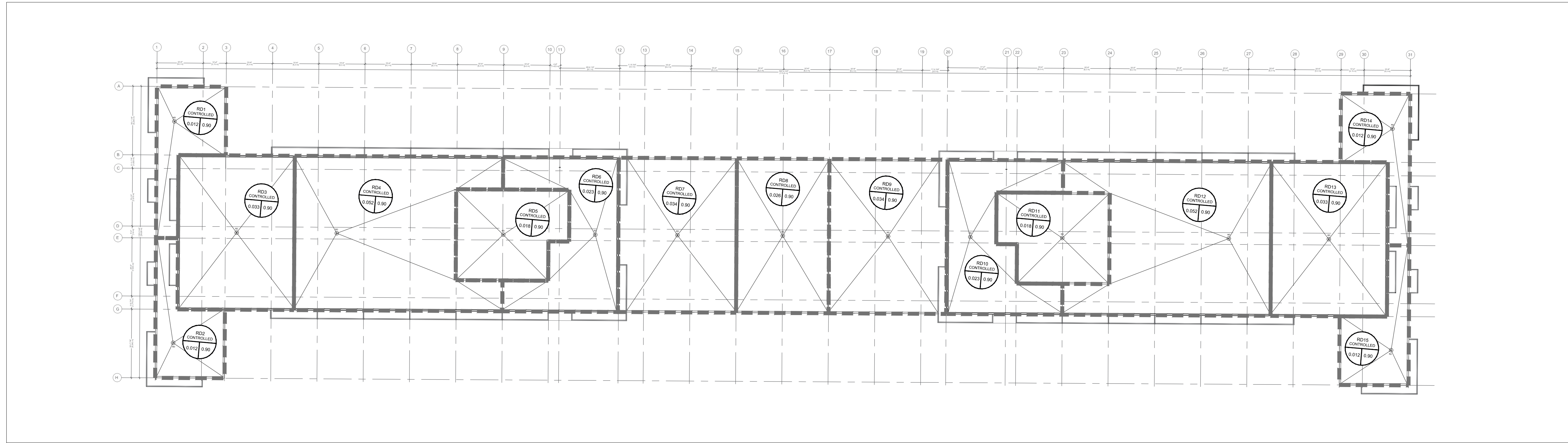
D07-12-20-0171

GENERAL NOTES:
 THE ENGINEER WAIVES ANY AND ALL RESPONSIBILITY AND LIABILITY FOR PROBLEMS WHICH ARISE FROM FAILURE TO FOLLOW THE PLANS, SPECIFICATIONS AND THE DESIGN INTENT THEY CONVEY, OR FOR PROBLEMS WHICH ARISE FROM OTHERS' FAILURE TO OBTAIN AND/OR FOLLOW THE ENGINEER'S GUIDANCE WITH RESPECT TO ANY ERRORS, OMISSIONS, INCONSISTENCIES, AMBIGUITIES OR CONFLICTS WHICH ARE ALLEGED.

CONTRACTOR TO VERIFY ALL DIMENSIONS AND NOTIFY THE ENGINEER OF ANY DISCREPANCIES BEFORE WORK COMMENCES. DO NOT SCALE DRAWINGS.



KEY PLAN (N.T.S.)



WATTS Adjustable Accutrol Weir Tag: Adjustable Flow Control for Roof Drains

ADJUSTABLE ACCUTROL (for Large Sump Roof Drains only)

For more flexibility in controlling flow with heads deeper than 2", Watts Drainage offers the Adjustable Accutrol. The Adjustable Accutrol Weir is designed with a single parabolic opening that can be covered to restrict flow above 2" of head to less than 2 gpm per inch, up to 6" of head. To adjust the flow rate for depths over 2" of head, set the slot in the adjustable upper cone according to the flow rate required. Refer to Table 1 below.
 Note: Flow rates are directly proportional to the amount of weir opening that is exposed.

EXAMPLE:
 For example, if the adjustable upper cone is set to cover 1/2 of the weir opening, flow rates above 2" of head will be restricted to 2 1/2 gpm per inch of head.
 Therefore, at 3" of head, the flow rate through the Accutrol Weir that has 1/2 the slot exposed will be:
 (3 gpm [per inch of head] x 2 inches of head) + 2 1/2 gpm (for the third inch of head) = 12 1/2 gpm.

1/2 Weir Opening Exposed Shown Above

Weir Opening Exposed	1"	2"	3"	4"	5"	6"
Fully Opened	5	10	15	20	25	30
3/4	5	10	13.75	17.5	21.25	25
1/2	5	10	12.5	15	17.5	20
1/4	5	10	11.25	13.75	16.25	17.5
Closed	5	5	5	5	5	5

Job Name: _____ Contractor: _____
 Job Location: _____ Contractor's P.O. No.: _____
 Engineer: _____ Representative: _____

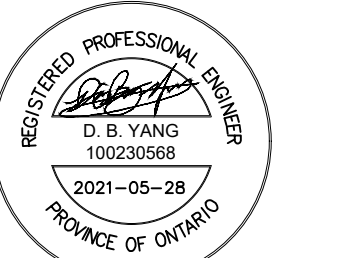
Watts product specifications in US customary units and metric are approximate and are provided for reference only. For specific measurements, please contact Watts. Watts reserves the right to change or modify product design, construction, specifications, or materials without prior notice and without assuming any obligation to make such changes and modifications on Watts product previously in use.

USA: Tel: (800) 338-2061 • Fax: (800) 248-3020 • watts.com
 Canada: Tel: (905) 330-4000 • Fax: (905) 303-7008 • watts.ca
 Latin America: Tel: (52) 99-9100-8800 • Fax: (52) 99-9100-0000 • watts.com
 ES-WD-FB-ACCUTROL-CAG-1515

No.	REVISIONS	BY	DATE
02	REVISED AS PER CITY COMMENTS	D.Y.	2021-05-28
01	ISSUED FOR SPA	D.Y.	2020-12-04

HORIZONTAL SCALE:

 SCALE: 1:300
 DISTANCES SHOWN ON THIS PLAN ARE IN METRES AND CAN BE CONVERTED TO FEET BY DIVIDING BY 0.3048



NOT VALID UNLESS SIGNED AND DATED

wsp

2611 Queensview Dr. Ottawa, ON Canada K2B 8K2
 t: 613.829.2800 f: 613.829.8299 www.wspgroup.com



ANNIS, O'SULLIVAN, VOLLEBEKK
 Ontario Land Surveyors
 14 CONCORSE GATE, SUITE 100, WILSON, ONTARIO, K2E 7S6
 TEL: (613) 727-0850 FAX: (613) 727-1079

DESIGNED BY: D.Y. DRAWN BY: D.Y. APPROVED BY: D.Y./J.J.

PROJECT: 6301 CAMPEAU DRIVE RESIDENTIAL DEVELOPMENT

DRAWING TITLE: ROOF DRAINAGE PLAN

PROJECT NO.: 201-03048-00 DRAWING NO.:

C10

#18353