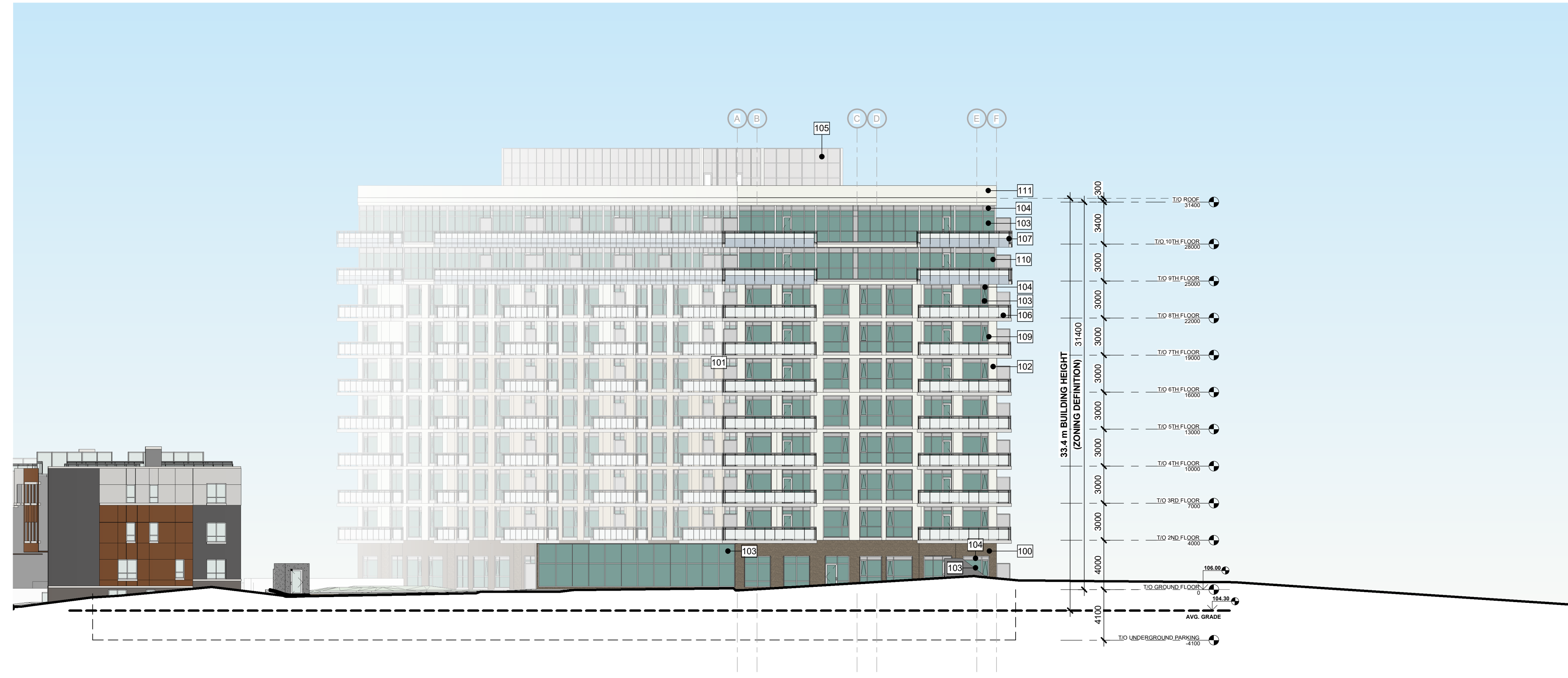


1 South Elevation
 A311C 1 : 250



2 West Elevation
 A311C 1 : 250

EXTERIOR ELEVATION LEGEND

- 100 MANUFACTURED STONE MASONRY - COLOUR: BROWN (FAIRVIEW TAUPE HC-85 BY BENJAMIN MOORE)
- 101 PREFABRICATED PANELIZED & PREFINISHED STONE CLADDING SYSTEM-COLOUR:BEIGE (ELMIRA WHITE HC-84 BY BENJAMIN MOORE)
- 102 PREFABRICATED PANELIZED & PREFINISHED STONE CLADDING SYSTEM-COLOUR:LIGHT GREY (OXFORD WHITE CC-30 BY BENJAMIN MOORE)
- 103 VISION GLASS (COLOUR: CLEAR CW LIGHT GREEN LOW E COATING)
- 104 BACK-PAINTED GLASS SPANDREL (COLOUR: LIGHT GREY TO MATCH MULLIONS)
- 105 NON-REFLECTIVE METAL SPANDREL PANELS - COLOUR: LIGHT GREY TO MATCH MULLIONS)
- 106 CLEAR ANODIZED ALUMINUM GUARD RAIL WITH CLEAR GLAZING & SLAB-EDGE COVER (COLOUR: LIGHT GREY, CLEAR)
- 107 CLEAR ANODIZED ALUMINUM GUARD RAIL WITH FROSTED GLAZING & SLAB-EDGE COVER (COLOUR: LIGHT GREY, CLEAR)
- 108 CLEAR ANODIZED STOREFRONT GLAZING (COLOUR: LIGHT GREY, CLEAR)
- 109 CLEAR ANODIZED ALUMINUM WINDOW (COLOUR: LIGHT GREY)
- 110 CLEAR ANODIZED ALUMINUM WINDOW WALL (COLOUR: LIGHT GREY)
- 111 PREFINISHED METAL CLADDING: LIGHT GREY (OXFORD WHITE CC-30 BY BENJAMIN MOORE)

NO.	DATE	DESCRIPTION

--	--	--	--	--	--



KANATA MIXED-USE RESIDENTIAL PROJECT
 691 CAMPEAU DR. CANATA, ON. K2K 3E9
APARTMENT C SOUTH AND WEST ELEVATIONS

PROJECT NAME	PROJECT NO.
DRAWN BY: KP	CHECKED BY: FF
DATE: 20-11-26	SCALE: 1:250
DRAWING NO. F19-049	PARCEL # 2
A311C	1