



Ottawa, August 24, 2020
No.: 6301-Campeau-YME-L1

Sameer Gulamani
Bayview Hospitality Holdings Ltd.

Reference: Subsurface Investigation Report 46-BHH-R1 for a proposed Townhouses and 6 Storey Apartment Buildings development at 6301 Campeau Dr., Ottawa, ON..

Subject: Validation of the referenced report for the changes on the proposed development and new site plan described in the attached drawing No. ASP-100 by Fabiani Architect Ltd. sealed by Fernando Fabiani architect license 3093 and issued for the referenced development at 6301 Campeau Drive.

At this time it is understood that the development will consist on townhouses and two 10 storey apartment buildings distributed as shown in the subject ASP-100 drawing.

In view of the subject ASP-100 drawing and the above described development YME does not see issues in the application of the referenced 46-BHH-R1 report for the new development. As such all references in report 46-BHH-R1 which are read “ Townhouses and 6 Storey Apartment Buildings” will be read “Townhouses and two 10 Storey Apartment Buildings”.

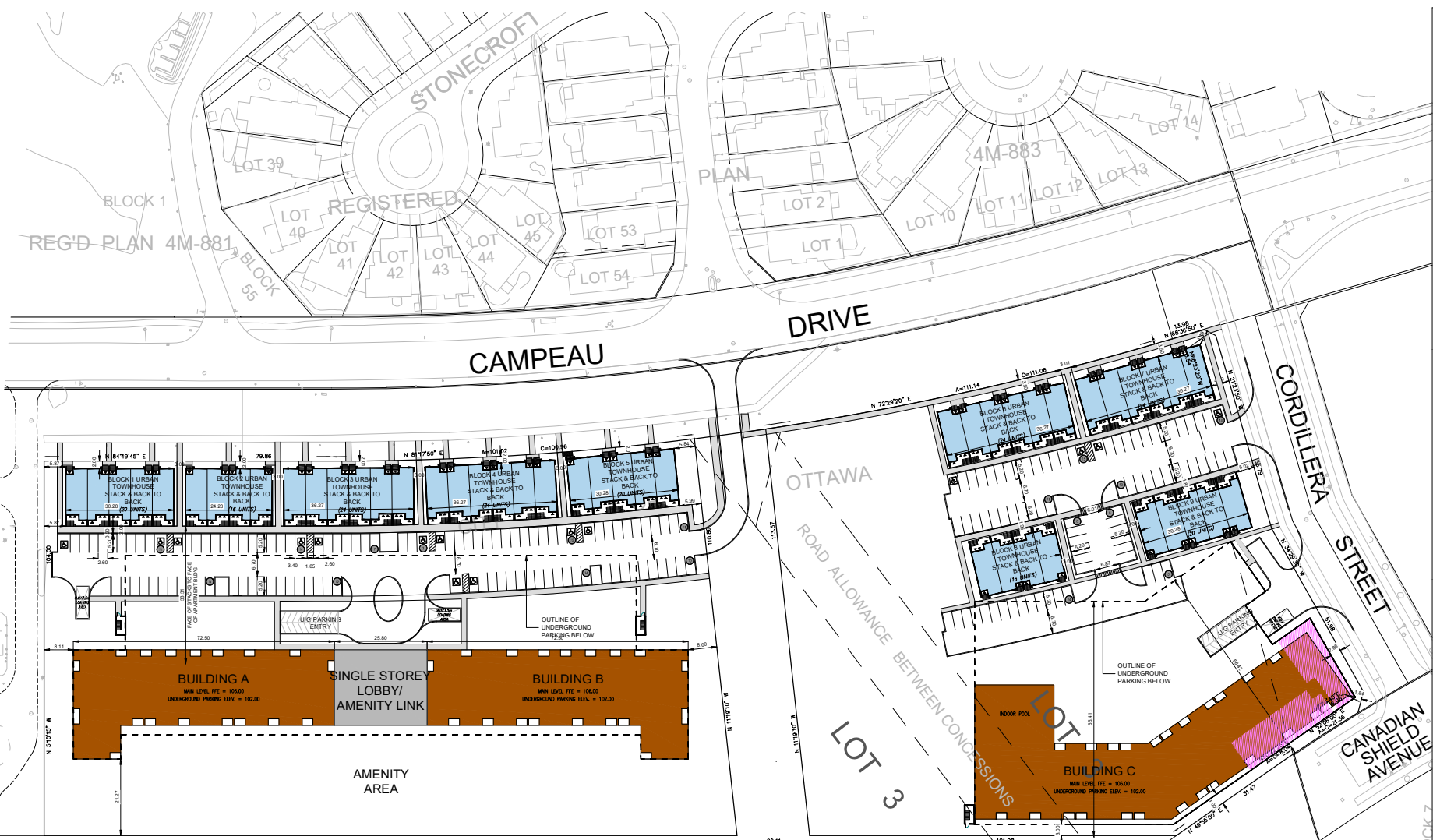
Do not hesitate to contact us if you have any questions.



Yuri Mendez, M. Eng, P. Eng



GENERAL NOTES
 1. THE DEVELOPER AGREEMENT IS TO BE FILED IMMEDIATELY IN PRESENCE TO THE CITY OF OTTAWA.
 2. APPROVE AND CARRY OUT ALL NECESSARY WORK TO OBTAIN THE CITY OF OTTAWA'S APPROVAL.
 3. THE DEVELOPER SHALL BE RESPONSIBLE FOR OBTAINING ALL NECESSARY PERMITS AND APPROVALS FROM THE CITY OF OTTAWA.
 4. THE DEVELOPER SHALL BE RESPONSIBLE FOR OBTAINING ALL NECESSARY PERMITS AND APPROVALS FROM THE CITY OF OTTAWA.
 5. THE DEVELOPER SHALL BE RESPONSIBLE FOR OBTAINING ALL NECESSARY PERMITS AND APPROVALS FROM THE CITY OF OTTAWA.



NO.	DESCRIPTION
1	
2	
3	
4	
5	
6	
7	
8	
9	
10	
11	
12	
13	
14	
15	
16	
17	
18	

NO.	DESCRIPTION
1	
2	
3	
4	
5	
6	
7	
8	
9	
10	
11	
12	
13	
14	
15	
16	
17	
18	



6301 CAMPEAU DRIVE
 CITY OF OTTAWA

SITE PLAN

PROJECT NO: 19-049
 DRAWN BY: [Name]
 CHECKED BY: [Name]
 SCALE: 1/4" = 1'-0"
 DATE: [Date]
 SHEET NO: ASP-100

LEGEND

- TOWNHOUSES
- APARTMENT UNITS
- PUBLIC SPACE
- COMMERCIAL SPACE (GRADE LEVEL)
- GRADE LEVEL PARKING

		STATISTICS	
PARCEL 1	URBAN TOWNS	104 UNITS	
	APARTMENTS	302 UNITS	
	TOTAL #	406 UNITS	
	SURFACE PARKING	108 spaces	
	UG PARKING	308 spaces	
PARCEL 2	URBAN TOWNS	84 UNITS	
	APARTMENTS	277 UNITS	
	TOTAL #	361 UNITS	
	SURFACE PARKING	72 spaces	
	UG PARKING	188 spaces	
TOTAL NUMBER OF UNITS ON BOTH PARCELS		817 UNITS	
TOTAL NUMBER OF UG PARKING SPACES		494 spaces	
TOTAL NUMBER OF SURFACE PARKING SPACES		180 spaces	

