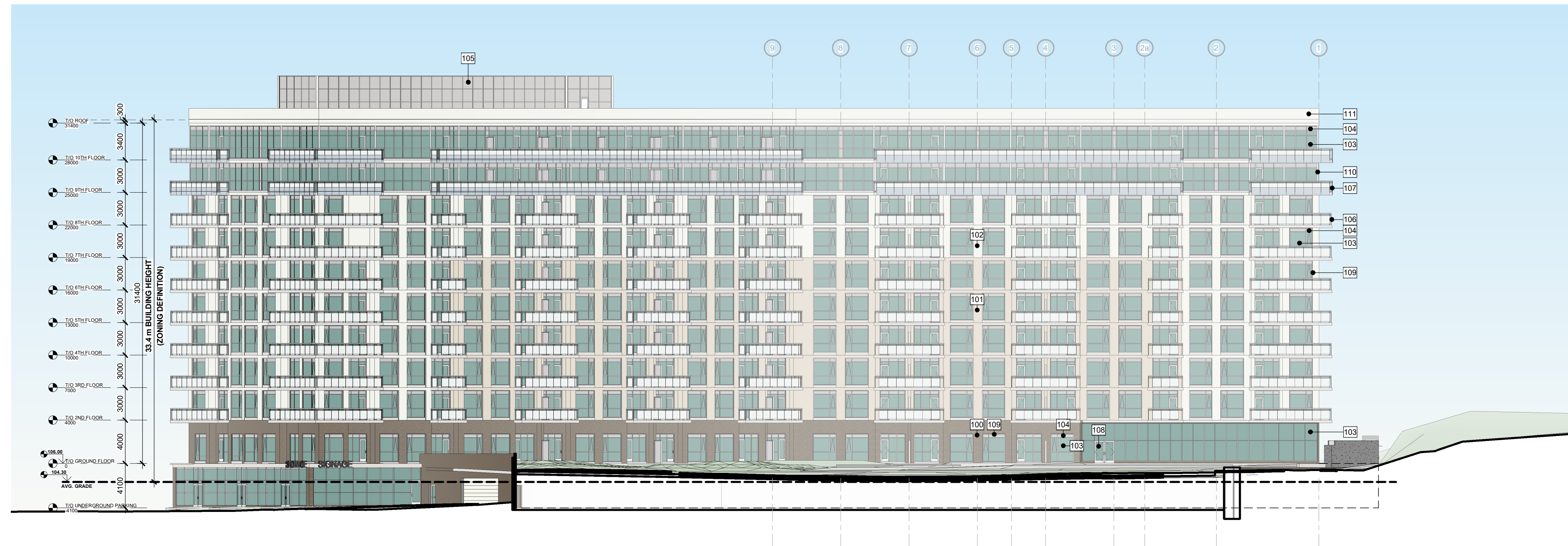
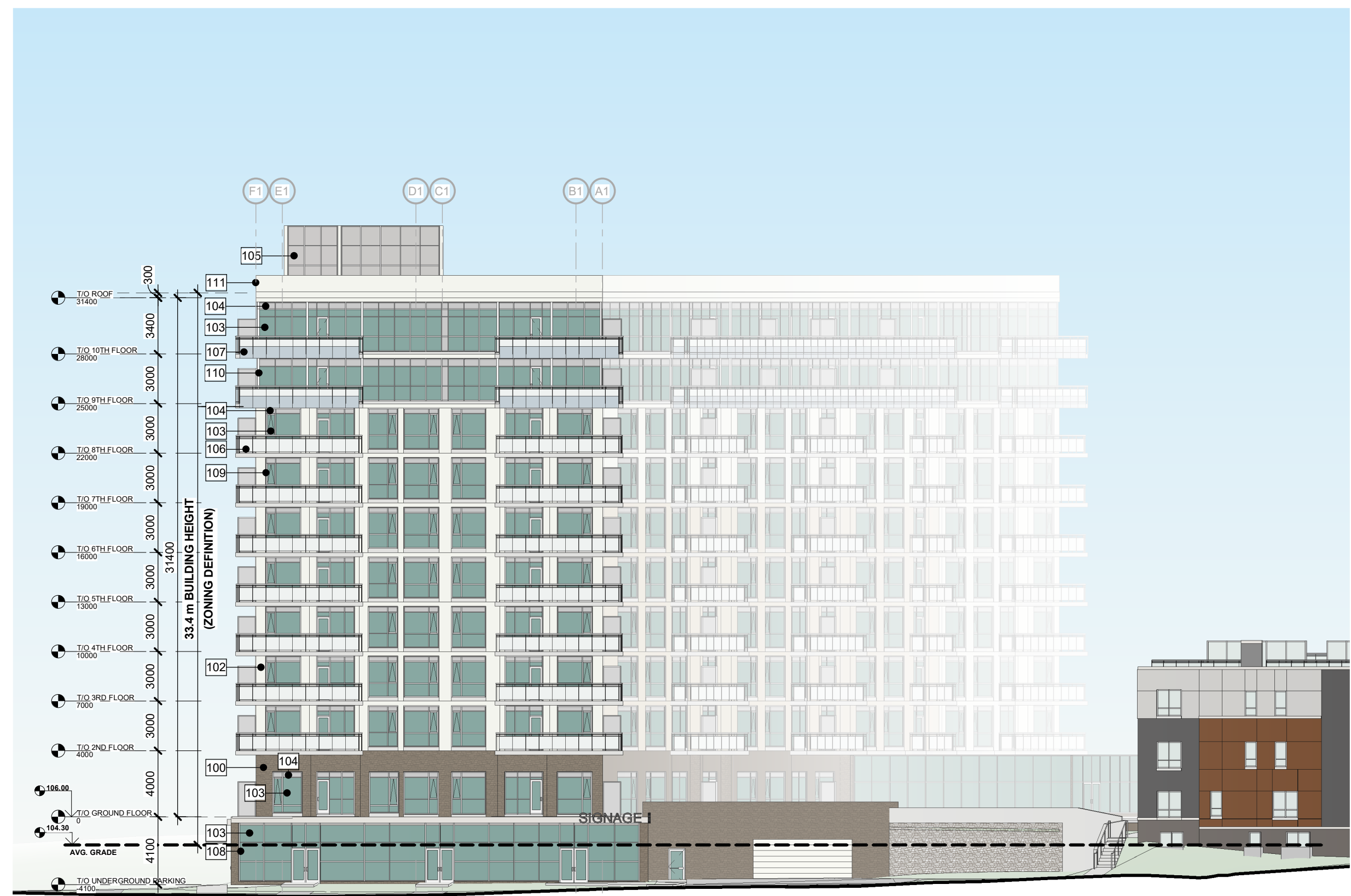


GENERAL NOTES:
 1. IT IS THE CONTRACTOR'S RESPONSIBILITY TO USE FIXED DIMENSIONS IN PREFERENCE TO SCALING.
 2. VERIFY AND CHECK ALL DIMENSIONS PRIOR TO AND DURING CONSTRUCTION.
 3. DETERMINE LOCATIONS OF ALL EXISTING SERVICES.
 4. PLANS ARE IN CONFORMANCE WITH THE OXFORD BUILDING CODE.
 ANY CHANGES, DISCREPANCIES OR SUBSTITUTIONS SHALL BE REPORTED TO AND REVIEWED BY THE ARCHITECT BEFORE PROCEEDING.



1 North Elevation
 A310C 1 : 250



2 East Elevation
 A310C 1 : 250

EXTERIOR ELEVATION LEGEND

- 100 MANUFACTURED STONE MASONRY - COLOUR: BROWN (FAIRVIEW TAUPE HC-85 BY BENJAMIN MOORE)
- 101 PREFABRICATED PANELIZED & PREFINISHED STONE CLADDING SYSTEM-COLOUR: BEIGE (ELMIRA WHITE HC-84 BY BENJAMIN MOORE)
- 102 PREFABRICATED PANELIZED & PREFINISHED STONE CLADDING SYSTEM-COLOUR: LIGHT GREY (OXFORD WHITE CC-30 BY BENJAMIN MOORE)
- 103 VISION GLASS (COLOUR: CLEAR C/W LIGHT GREEN LOW E COATING)
- 104 BACK-PAINTED GLASS SPANDREL (COLOUR: LIGHT GREY TO MATCH MULLIONS)
- 105 NON-REFLECTIVE METAL SPANDREL PANELS - COLOUR: LIGHT GREY TO MATCH MULLIONS
- 106 CLEAR ANODIZED ALUMINUM GUARD RAIL WITH CLEAR GLAZING & SLAB-EDGE COVER (COLOUR: LIGHT GREY, CLEAR)
- 107 CLEAR ANODIZED ALUMINUM GUARD RAIL WITH FROSTED GLAZING & SLAB-EDGE COVER (COLOUR: LIGHT GREY CLEAR)
- 108 CLEAR ANODIZED STOREFRONT GLAZING (COLOUR: LIGHT GREY, CLEAR)
- 109 CLEAR ANODIZED ALUMINUM WINDOW (COLOUR: LIGHT GREY)
- 110 CLEAR ANODIZED ALUMINUM WINDOW WALL (COLOUR: LIGHT GREY)
- 111 PREFINISHED METAL CLADDING: LIGHT GREY (OXFORD WHITE CC-30 BY BENJAMIN MOORE)

DATE	20-11-26
BY	KB
FOR	1:250
PROJECT NO.	F19-049
PARCEL #	2
DRAWING NO.	A310C
SHEET ISSUE NO.	1

SCALE	1:250
REVISION	
DATE	
BY	
FOR	
PROJECT	
ARCHITECT	
AS BUILT	
OTHER	



PROJECT NAME:
KANATA MIXED-USE RESIDENTIAL PROJECT
 691 CAMPEAU DR. CANATA, ON. K9K 5E9

DRAWING TITLE:
APARTMENT C NORTH AND EAST ELEVATIONS

DRAWN BY: KB
 DATE: 20-11-26
 PROJECT NO.: F19-049
 DRAWING NO.: A310C

CHECKED BY: FF
 SCALE: 1:250
 PARCEL #: 2
 SHEET ISSUE NO.: 1