

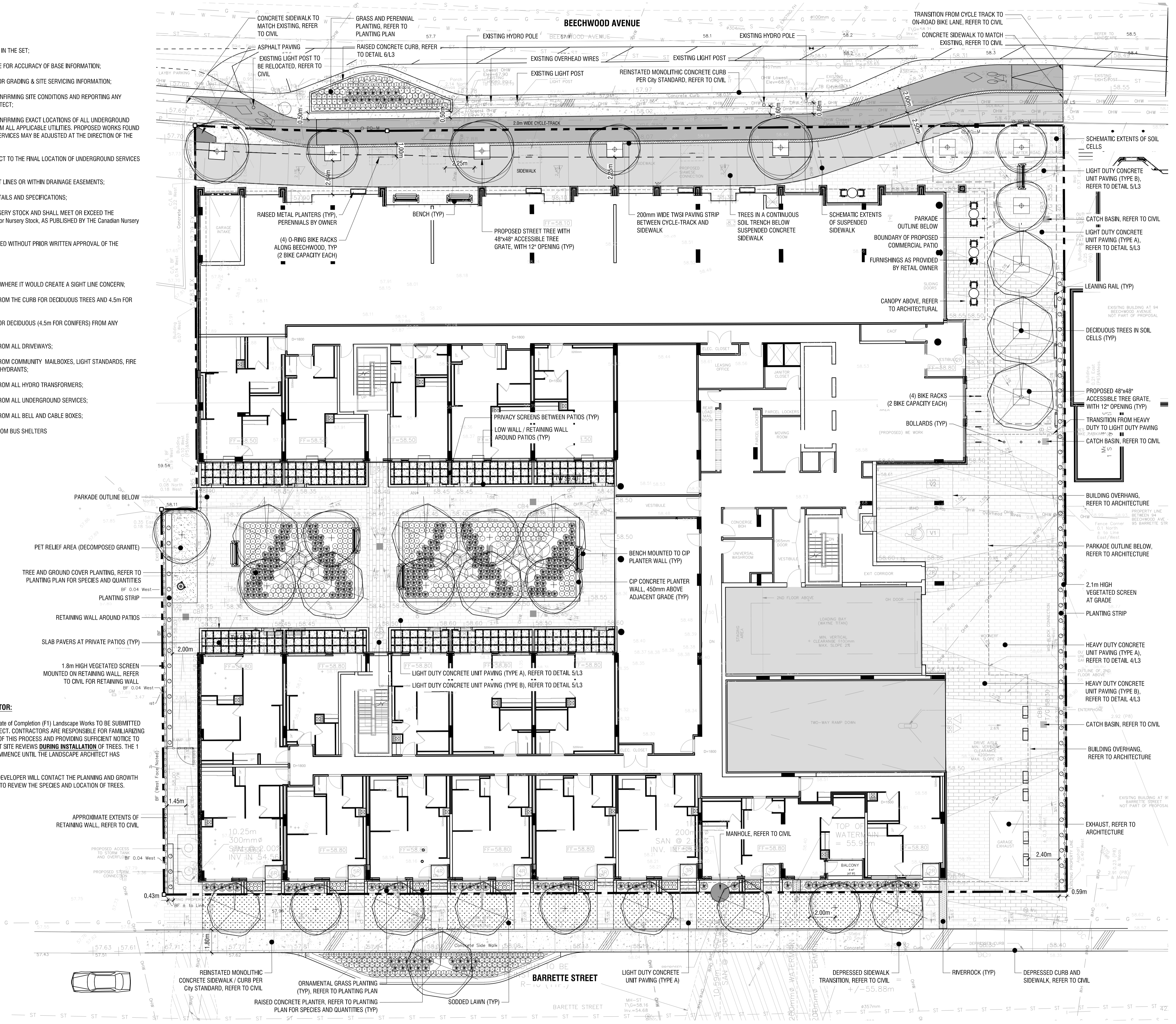
NOTES:

- DO NOT SCALE DRAWINGS;
- NOTES ARE APPLICABLE TO ALL DRAWINGS IN THE SET;
- Fotenn Consultants Inc. IS NOT RESPONSIBLE FOR ACCURACY OF BASE INFORMATION;
- REFER TO CIVIL ENGINEERING DRAWINGS FOR GRADING & SITE SERVICING INFORMATION;
- THE CONTRACTOR IS RESPONSIBLE FOR CONFIRMING SITE CONDITIONS AND REPORTING ANY DISCREPANCIES TO THE LANDSCAPE ARCHITECT;
- THE CONTRACTOR IS RESPONSIBLE FOR CONFIRMING EXACT LOCATIONS OF ALL UNDERGROUND SERVICES AND OBTAINING CLEARANCE FROM ALL APPLICABLE UTILITIES. PROPOSED WORKS FOUND TO BE IN CONFLICT WITH UNDERGROUND SERVICES MAY BE ADJUSTED AT THE DIRECTION OF THE LANDSCAPE ARCHITECT;
- LANDSCAPE ELEMENTS SHOWN ARE SUBJECT TO THE FINAL LOCATION OF UNDERGROUND SERVICES AND UTILITIES;
- DO NOT INSTALL TREES ON PROPERTY / LOT LINES OR WITHIN DRAINAGE EASEMENTS;
- PERFORM WORK IN ACCORDANCE WITH DETAILS AND SPECIFICATIONS;
- ALL PLANT MATERIAL SHALL BE No. 1 NURSERY STOCK AND SHALL MEET OR EXCEED THE SPECIFICATION OF THE Canadian Standards for Nursery Stock, AS PUBLISHED BY THE Canadian Nursery Landscape Association;
- SPECIES SUBSTITUTIONS ARE NOT PERMITTED WITHOUT PRIOR WRITTEN APPROVAL OF THE LANDSCAPE ARCHITECT;
- STANDARDS FOR TREE PLANTING:**
- NO PLANTING ON CORNERS OR ANYWHERE WHERE IT WOULD CREATE A SIGHT LINE CONCERN;
- MAINTAIN A MINIMUM DISTANCE OF 2.5m FROM THE CURB FOR DECIDUOUS TREES AND 4.5m FOR CONIFEROUS TREES;
- MAINTAIN A MINIMUM DISTANCE OF 1.5m FOR DECIDUOUS (4.5m FOR CONIFERS) FROM ANY SIDEWALK OR PRIVATE WALKWAY;
- MAINTAIN A MINIMUM DISTANCE OF 1.2m FROM ALL DRIVEWAYS;
- MAINTAIN A MINIMUM DISTANCE OF 2.5m FROM COMMUNITY MAILBOXES, LIGHT STANDARDS, FIRE HYDRANTS AND NO PLANTING IN FRONT OF HYDRANTS;
- MAINTAIN A MINIMUM DISTANCE OF 3.0m FROM ALL HYDRO TRANSFORMERS;
- MAINTAIN A MINIMUM DISTANCE OF 1.0m FROM ALL UNDERGROUND SERVICES;
- MAINTAIN A MINIMUM DISTANCE OF 1.0m FROM ALL BELL AND CABLE BOXES;
- MAINTAIN A MINIMUM DISTANCE OF 10.0 FROM BUS SHELTERS

IMPORTANT NOTICE FOR CONTRACTOR:

THE CITY OF OTTAWA REQUIRES A Certificate of Completion (F1) Landscape Works TO BE SUBMITTED AND SEALED BY THE LANDSCAPE ARCHITECT. CONTRACTORS ARE RESPONSIBLE FOR FAMILIARIZING THEMSELVES WITH THE REQUIREMENTS OF THIS PROCESS AND PROVIDING SUFFICIENT NOTICE TO THE LANDSCAPE ARCHITECT TO CONDUCT SITE PREVIEW DURING INSTALLATION OF TREES. THE 1 YEAR WARRANTY PERIOD SHALL NOT COMMENCE UNTIL THE LANDSCAPE ARCHITECT HAS SUBMITTED THE F1 Certificate.

PRIOR TO INSTALLATION OF TREES, THE DEVELOPER WILL CONTACT THE PLANNING AND GROWTH MANAGEMENT AND FORESTRY SERVICES TO REVIEW THE SPECIES AND LOCATION OF TREES.



Copyright Reserved
The Copyrights to all designs and drawings are the property of Fotenn Consultants Inc. Unauthorized reproduction or use is forbidden. DO NOT SCALE DRAWING

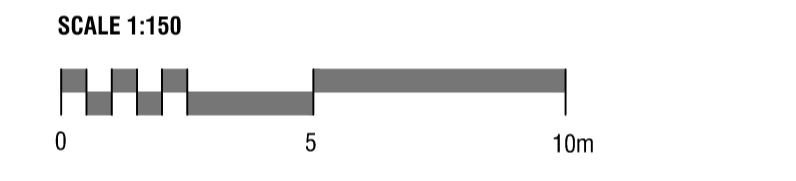
Copyright réservés
Les droits d'auteur à tous les modèles et dessins sont la propriété de Fotenn Consultants Inc. Reproduction ou utilisation non autorisée est interdite. NE PAS L'ÉCHELLE DE DESSIN



key plan / plan repère

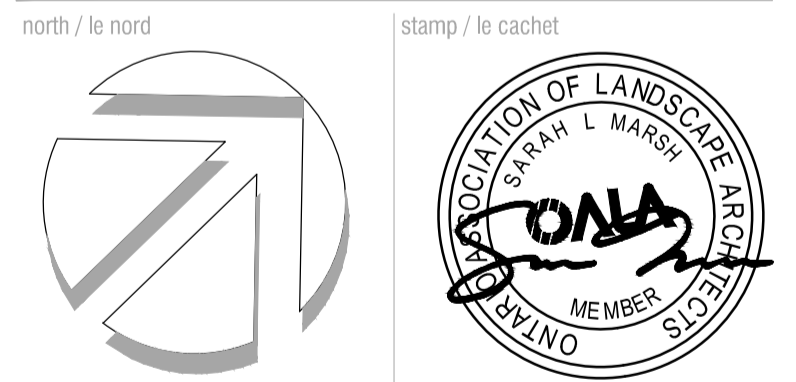
PRELIMINARY DRAWINGS

- legend / légende
- BOUNDARY OF APPLICATION
 - DECIDUOUS TREES (SEE PLANTING NOTES & SCHEDULE FOR SPECIES AND QUANTITIES)
 - PERENNIALS, GRASSES AND VINES (SEE PLANTING NOTES & SCHEDULE FOR SPECIES AND QUANTITIES)
 - PLANT KEY
 - CONCRETE UNIT PAVING - TYPE A
 - CONCRETE UNIT PAVING - TYPE B
 - CONCRETE PAVING
 - SOD ON 135mm DEPTH TOPSOIL
 - VEGETATED SCREEN
 - BIKE RACKS (CAPACITY - 2 BICYCLES)
 - SITE FURNISHINGS



rev/n	description / la description	yyyy/mm/dd
03	coordination with new Site Plan - issued for SPA	2021/05/06
02	issued for SPA	2020/12/18
01	issued for Coordination	2020/12/16
00	issued for Coordination	2020/11/25

FOTENN Planning + Design
396 Cooper Street, Suite 300
Ottawa, ON, CANADA K2P 2H7
613.730.5709
fotenn.com



project / projet

78-88 BEECHWOOD AVE & 69-93 BARRETTE ST

drawing / dessin

LANDSCAPE PLAN

designed / conçu	drawn / dessiné	reviewed / examiné
PM / SM	PM / SP	SM
date	project number / No. du projet	
APRIL 2020		
drawing number / No. du dessin		

L1 of 3

1 LANDSCAPE PLAN
L1 1:150

CITY FILE No. D07-12-20-0186 CITY PLAN No. 18404

Client / Client

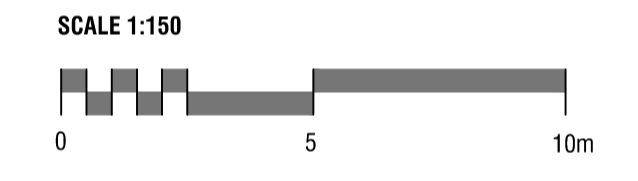


key plan / plan repère

PRELIMINARY DRAWINGS

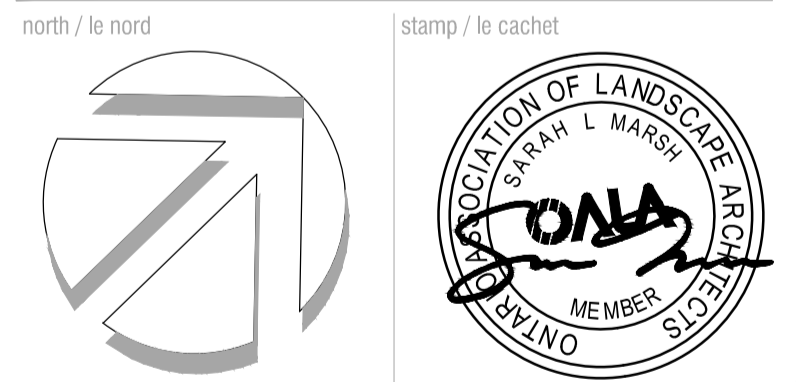
legend / légende

- BOUNDARY OF APPLICATION
- XX DECIDUOUS TREES (SEE PLANTING NOTES & SCHEDULE FOR SPECIES AND QUANTITIES)
- YY PERENNIALS, GRASSES AND VINES (SEE PLANTING NOTES & SCHEDULE FOR SPECIES AND QUANTITIES)
- 3 XX PLANT KEY
- CONCRETE UNIT PAVING - TYPE A
- CONCRETE UNIT PAVING - TYPE B
- CONCRETE PAVING
- SOD ON 135mm DEPTH TOPSOIL
- VEGETATED SCREEN
- BIKE RACKS (CAPACITY - 2 BICYCLES)
- SITE FURNISHINGS



rev/n	description / la description	yyyy/mm/dd
03	coordination with new Site Plan - issued for SPA	2021/05/06
02	issued for SPA	2020/12/18
01	issued for Coordination	2020/12/16
00	issued for Coordination	2020/11/25

FOTENN Planning + Design
 396 Cooper Street, Suite 300
 Ottawa, ON, CANADA K2P 2H7
 613.730.5709
 fotenn.com



project / projet
78-88 BEECHWOOD AVE & 69-93 BARRETTE ST

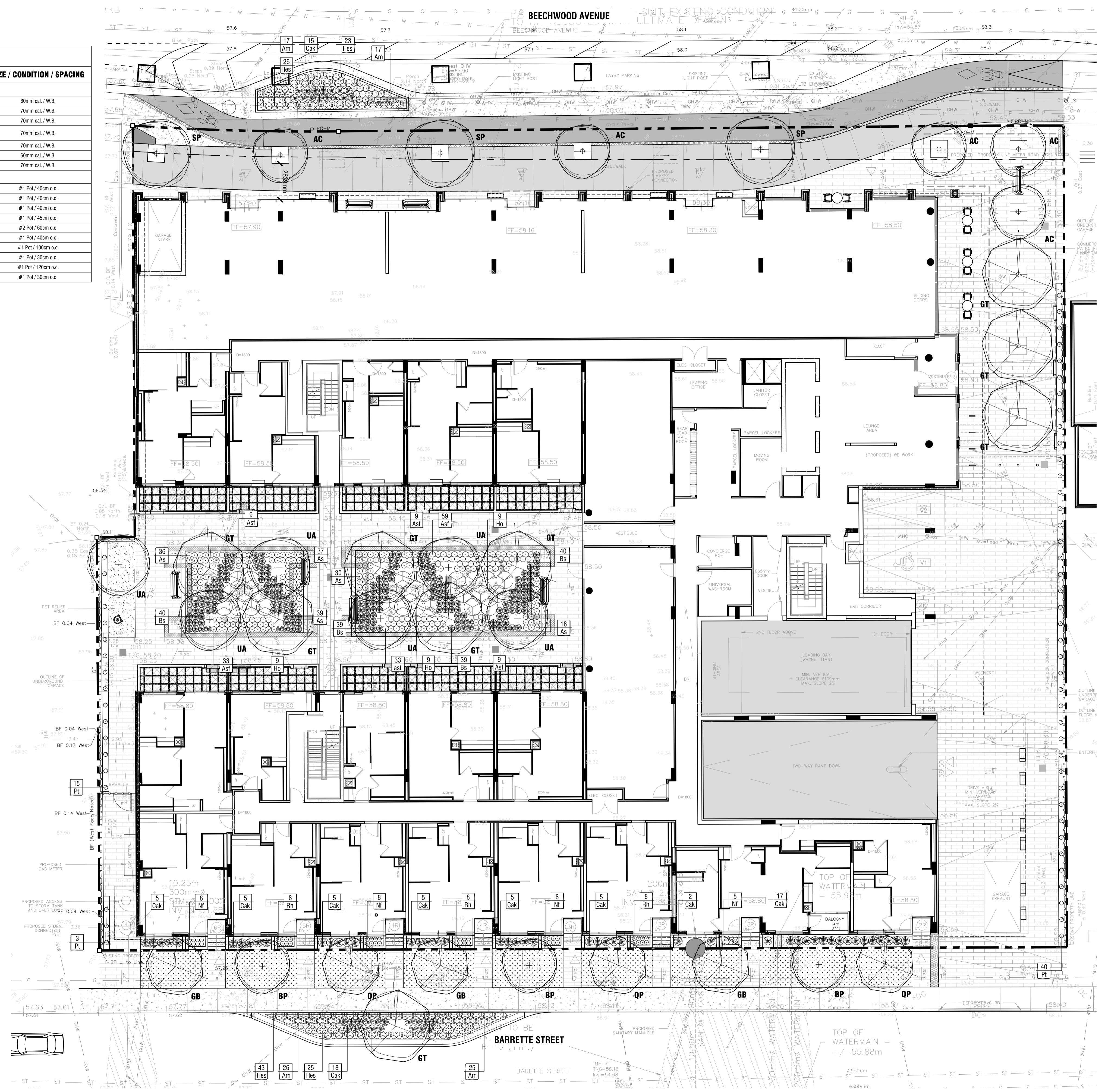
drawing / dessin

PLANTING PLAN

designed / conçu	drawn / dessiné	reviewed / examiné
PM / SM	PM / SP	SM
date	project number / No. du projet	
APRIL 2020		
drawing number / No. du dessin		

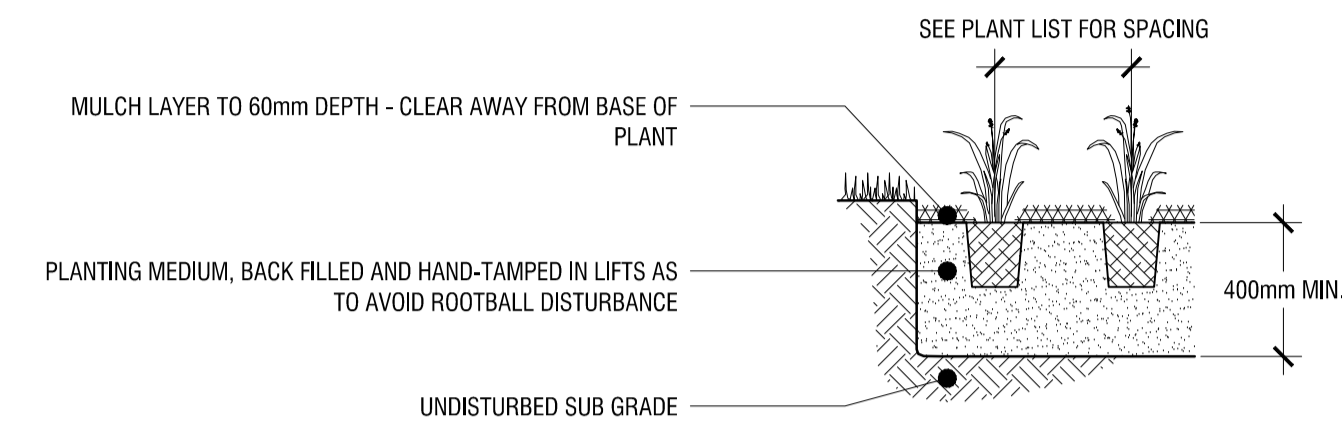
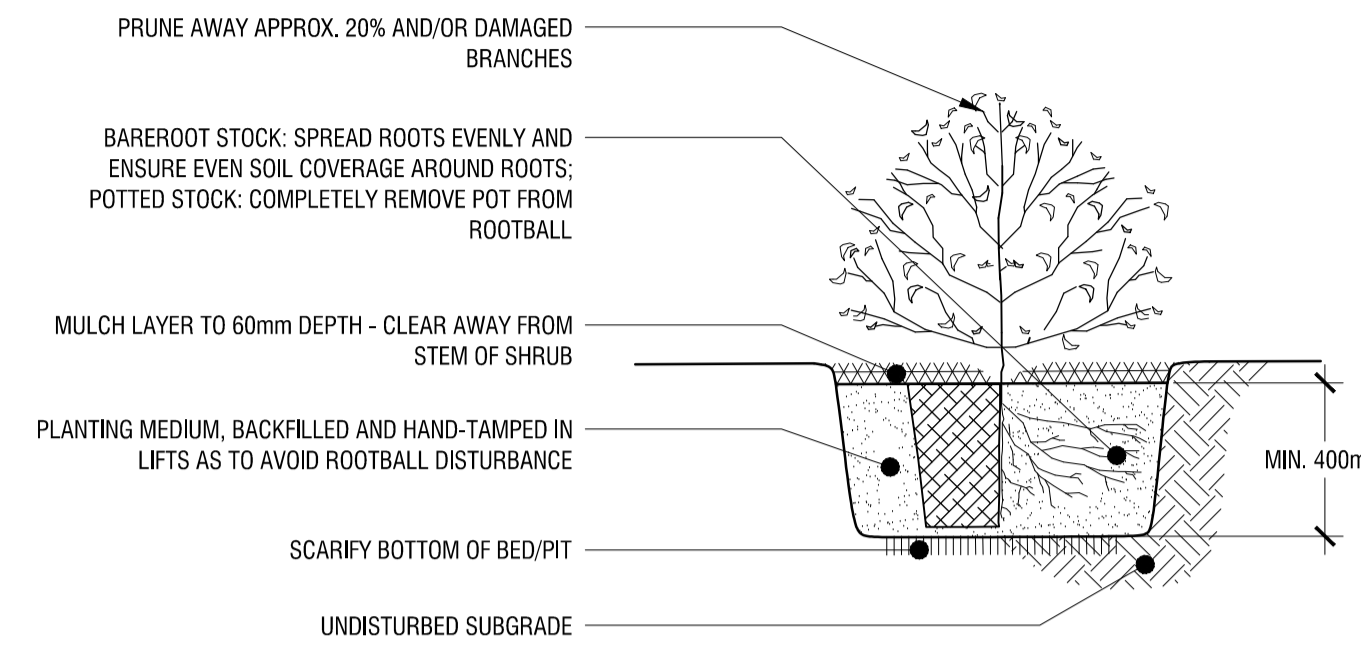
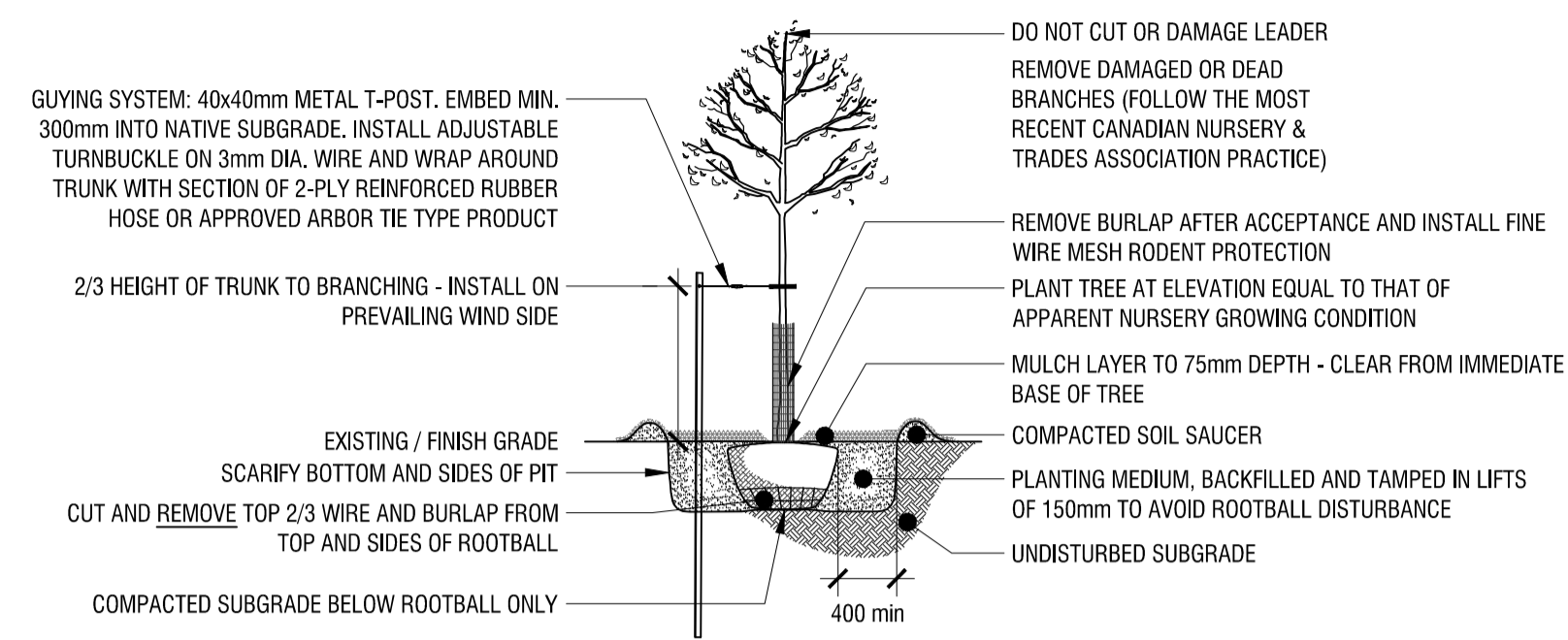
L2 of 3

KEY	QTY.	BOTANICAL NAME	COMMON NAME	SIZE / CONDITION / SPACING
DECIDUOUS TREES				
AC	5	<i>Ametancher canadensis</i>	Serviceberry	60mm cal. / W.B.
BP	3	<i>Betula pendula 'Fastigiata'</i>	Pyramidal European Birch	70mm cal. / W.B.
GB	3	<i>Ginkgo biloba 'Fastigiata'</i>	Columnar Maidenhair Tree	70mm cal. / W.B.
GT	9	<i>Gleditsia triacanthos var. inermis 'Street Keeper®' (Draves)</i>	Street Keeper® (Draves) Honeylocust	70mm cal. / W.B.
QP	3	<i>Quercus palustris 'Pringent'</i>	Green Pillar Oak	70mm cal. / W.B.
SP	3	<i>Syringa pekinensis 'Summer Charm®'</i>	Summer Charm Tree Lilac	60mm cal. / W.B.
UA	6	<i>Ulmus americana 'Grandor'</i>	Brandon Elm	70mm cal. / W.B.
PERENNIALS, GRASSES AND VINES				
Am	85	<i>Achillea millefolium 'Summer Pastels'</i>	Summer Pastels Yarrow	#1 Pot / 40cm o.c.
Asf	152	<i>Astilbe x 'Fireberry'</i>	Fireberry Astilbe	#1 Pot / 40cm o.c.
As	121	<i>Astilbe chinensis 'Pumila'</i>	Dwarf Chinese Astilbe	#1 Pot / 40cm o.c.
Bs	197	<i>Blechnum spicant</i>	Dear Fern	#1 Pot / 45cm o.c.
Cak	82	<i>Calamagrostis acutiflora 'Karl Foerster'</i>	Feather Reed Grass	#2 Pot / 60cm o.c.
Hes	117	<i>Hemerocallis 'Stella D'Oro'</i>	Stella D'Oro Daylily	#1 Pot / 40cm o.c.
Ho	27	<i>Hosta 'Blue Angel'</i>	Plantain Lily	#1 Pot / 100cm o.c.
Nr	32	<i>Nepeta faasseni 'Puritan Blue'</i>	Puritan Blue Catmint	#1 Pot / 30cm o.c.
Pt	58	<i>Platanocissus tricuspidata 'Vetcher'</i>	Boston Ivy	#1 Pot / 120cm o.c.
Rh	24	<i>Rudbeckia hirta 'Autumn Colours'</i>	Autumn Colours Gloriosa Daisy	#1 Pot / 30cm o.c.



1 PLANTING PLAN
L2 1:150

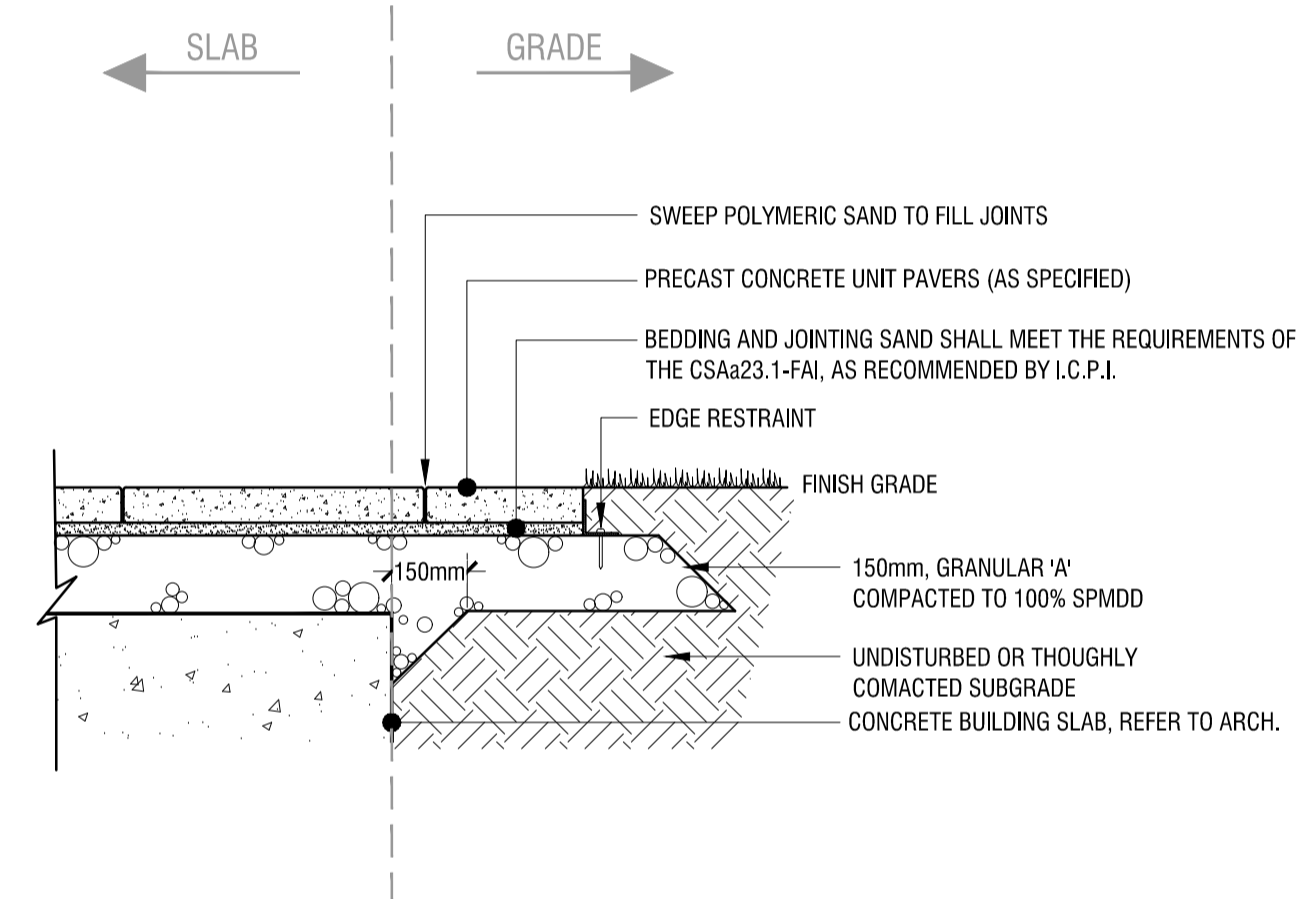
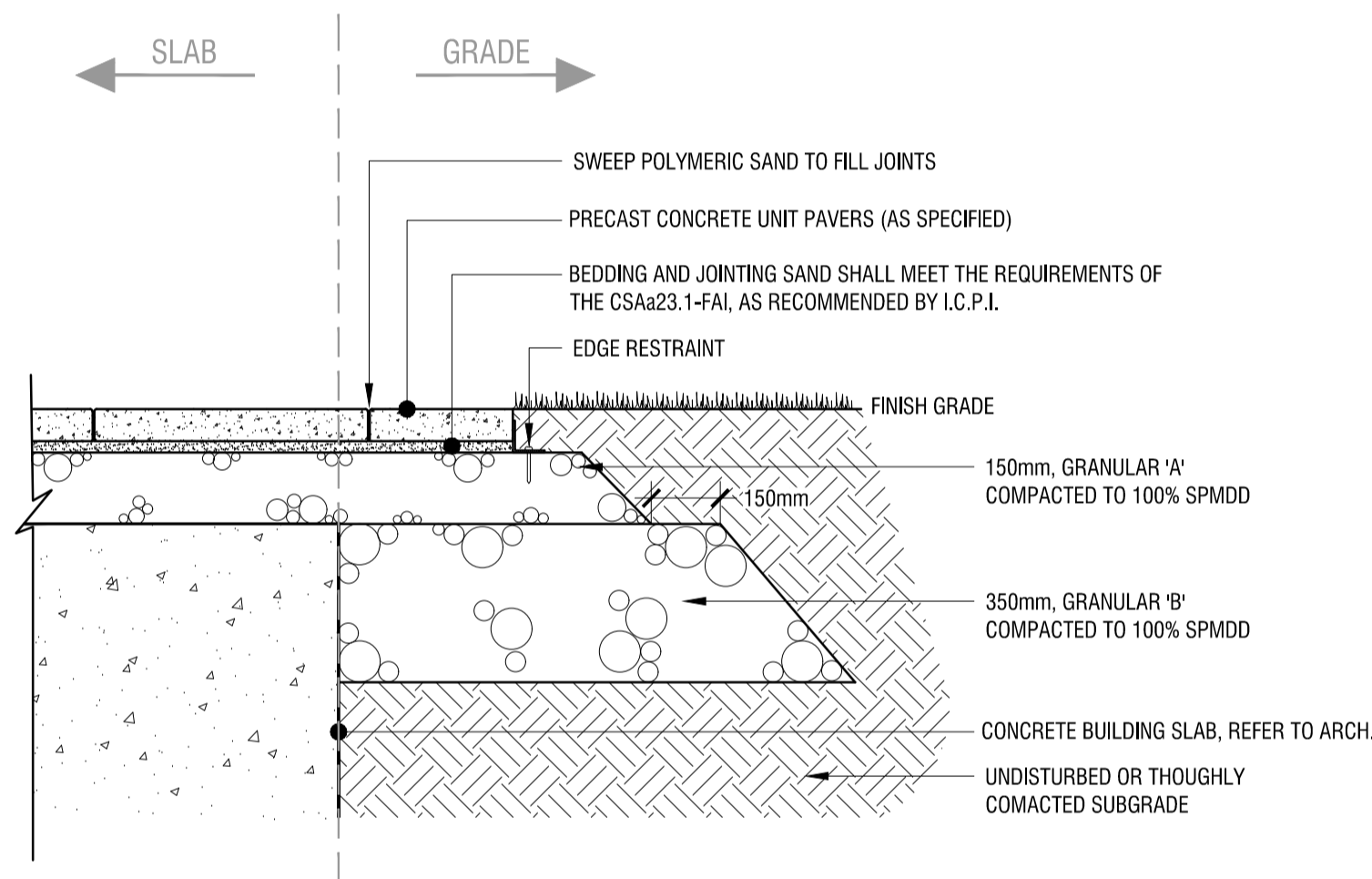
CITY FILE No. D07-12-20-0186 CITY PLAN No. 18404



1 **DECIDUOUS TREE PLANTING DETAIL**
L3 n.t.s.

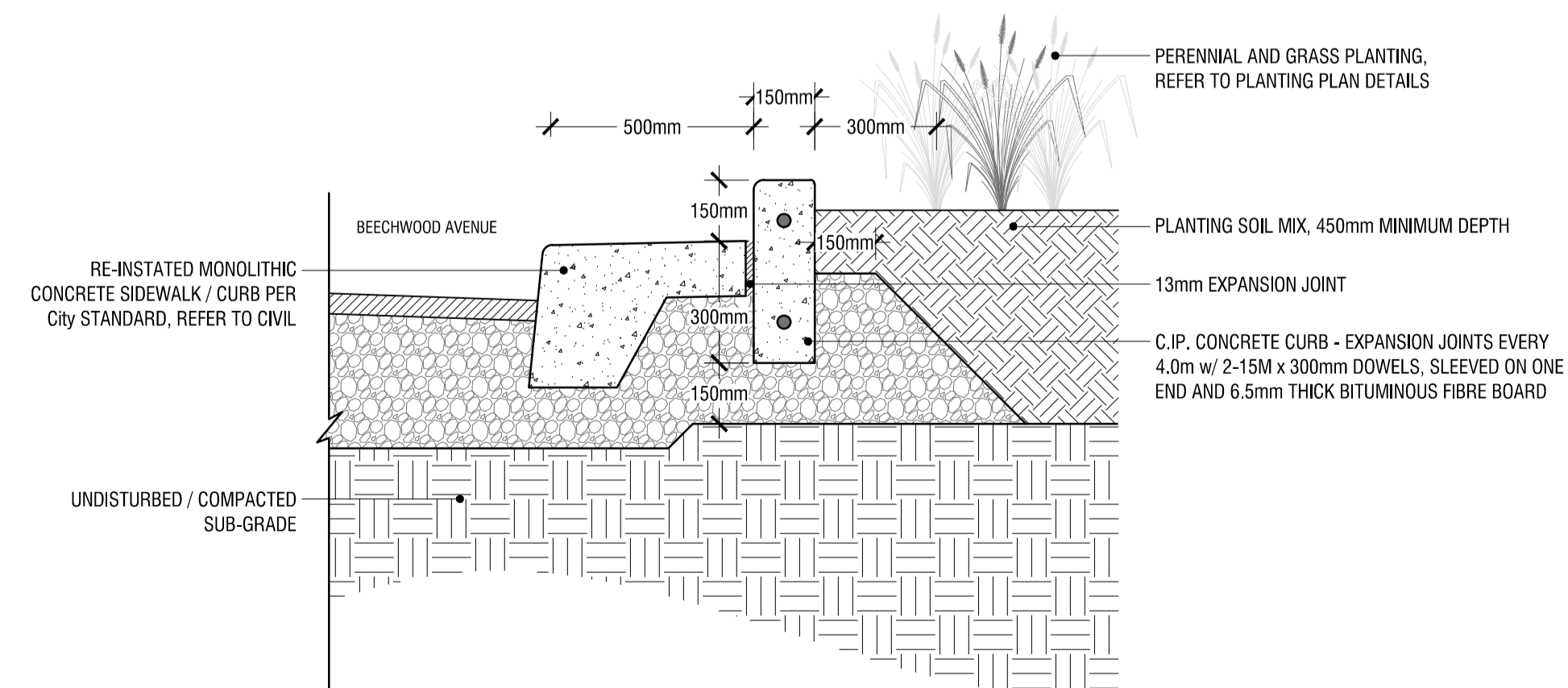
2 **SHRUB PLANTING DETAIL**
L3 n.t.s.

3 **PERENNIAL PLANTING DETAIL**
L3 n.t.s.



4 **HEAVY-DUTY CONCRETE UNIT PAVING**
L3 n.t.s.

5 **LIGHT-DUTY CONCRETE UNIT PAVING**
L3 n.t.s.



6 **RAISED CURB AT PLANTING BED (BEECHWOOD AVE)**
L3 n.t.s.

rev'n	description / la description	yyyy/mm/dd
02	issued for SPA	2020/12/18
01	issued for Coordination	2020/12/16
00	issued for Coordination	2020/11/25

FOTENN Planning + Design
 396 Cooper Street, Suite 300
 Ottawa, ON, CANADA K2P 2H7
 613.730.5709
 fotenn.com

north / le nord stamp / le cachet



project / projet

**78-88 BEECHWOOD AVE &
69-93 BARRETTE ST**

drawing / dessin

CONSTRUCTION DETAILS

designed / conçu	drawn / dessiné	reviewed / examiné
PM / SM	PM / SP	SM
date	project number / No. du projet	
APRIL 2020		

drawing number / No. du dessin