

MARITIME-ONTARIO OTTAWA  
8800 CAMPEAU DRIVE  
OTTAWA, ON  
K2S 1B9



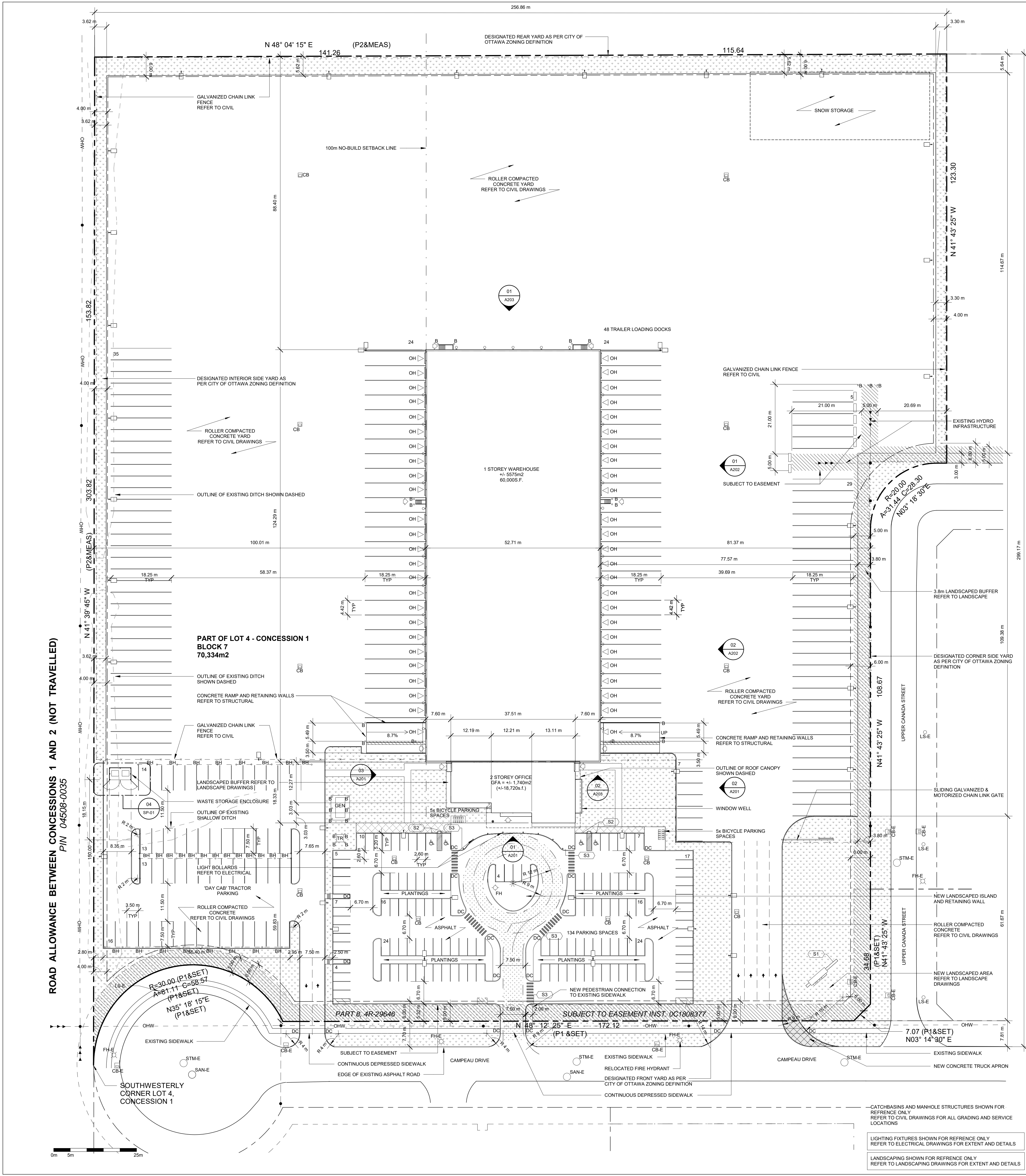
---

ISSUED FOR SITE PLAN APPLICATION

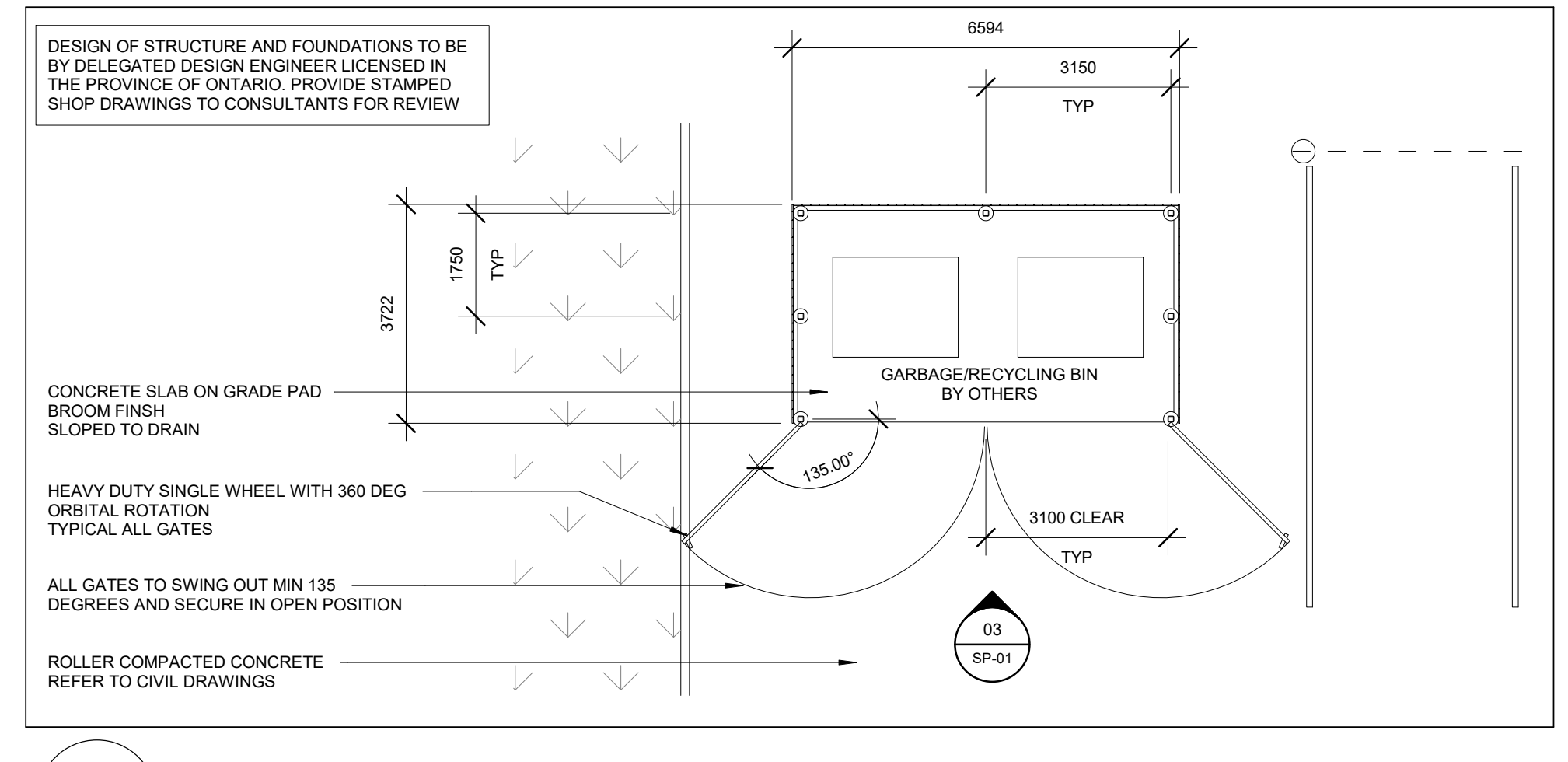
2020-12-16

PROJECT NO. 19-247  
ARCHITECTURAL DRAWING LIST

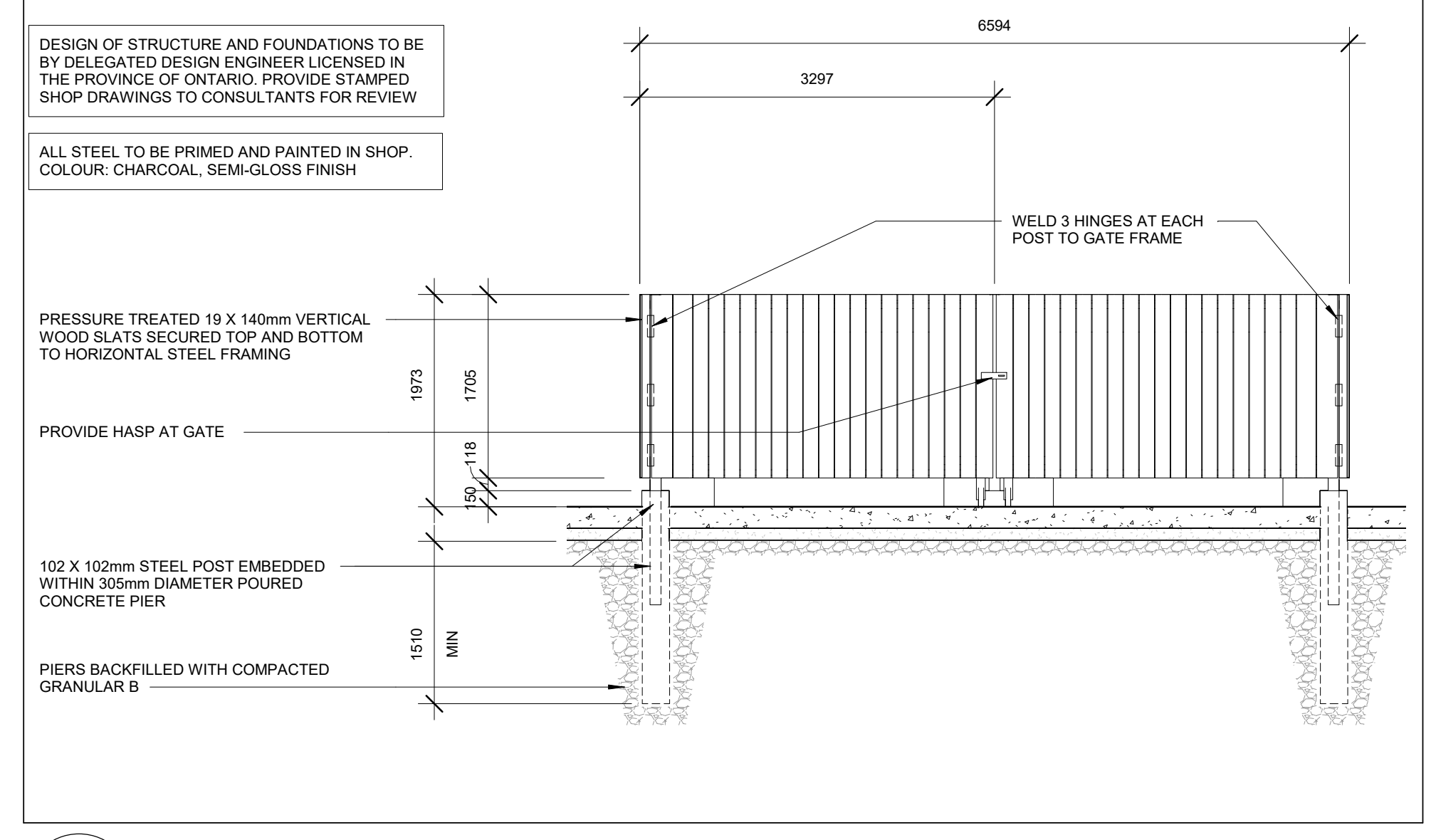
SHEET NUMBER	SHEET NAME
SP-01	COVER SHEET / DRAWING LIST SITE PLAN
A201	OFFICE ELEVATIONS
A202	CROSS DOCK ELEVATIONS - EAST
A203	CROSS DOCK ELEVATIONS - NORTH & SOUTH



**05 SITE PLAN**  
SP-01 Scale: 1:500



**04 PLAN DETAIL - GARBAGE ENCLOSURE**  
SP-01 Scale: 1:100



**03 PARTIAL ELEVATION - GARBAGE ENCLOSURE**  
SP-01 Scale: 1:50

	REQUIRED	PROVIDED
MINIMUM LOT AREA	750m <sup>2</sup>	70,334m <sup>2</sup>
MINIMUM LOT WIDTH	NO MINIMUM	297.6m
MINIMUM LOT COVERAGE	55%	10.3%
SETBACKS	FRONT YARD: 6m INTERIOR SIDE YARD: 4m CORNER SIDE YARD: 6m REAR YARD: 6m	FRONT YARD: 59.83m INTERIOR SIDE YARD: 100m CORNER SIDE YARD: 81.37m REAR YARD: 88.4m
MAXIMUM FLOOR SPACE INDEX	2.0	0.103
MAXIMUM BUILDING HEIGHT	22m	12.38m
MINIMUM WIDTH OF LANDSCAPE	ABUTTING A STREET: 3m ALL OTHER CASES: NO MINIMUM	ABUTTING A STREET: 3m (CAMPEAU), 5.32m (UPPER CANADA) ALL OTHER CASES: 1.52m
ACCESSORY SALES AND DISPLAY AREA	MAXIMUM 25% OF THE GROSS FLOOR AREA OF THE PROPOSED BUILDING	N/A
MINIMUM PARKING WAREHOUSE: 0.8% OF GFA	WAREHOUSE: 58 SPACES	134 SPACES
BARRIER FREE PARKING TYPE A: MINIMUM 3.4m WIDE TYPE B: MINIMUM 2.6m WIDE MINIMUM ACCESS AISLE: 1.5m	4 SPACES (2 TYPE A + 2 TYPE B)	4 SPACES (2 TYPE A + 2 TYPE B)
MINIMUM BICYCLE PARKING WAREHOUSE: 1% OF GFA	7 SPACES	10 SPACES
LOADING SPACES	2 SPACES	48 SPACES

**02 ZONING TABLE**  
SP-01 Scale: N/A

**SITE PLAN INFORMATION**  
UNDERLYING TOPOGRAPHICAL INFORMATION IS AS PER A PLAN PREPARED BY STANTEC GEOMATICS LTD. ONTARIO LAND SURVEYORS DATED DECEMBER 20TH, 2019 OF PART OF LOT 4 CONCESSION 1, GEOGRAPHIC TOWNSHIP OF HUNTERLEY.

**ABBREVIATIONS**  
 ADDA: ACCESSIBILITY FOR ONTARIANS WITH DISABILITIES  
 TWSI: TACTILE WALKING SURFACE INDICATOR

**SIGNAGE**  
 S1: NEW ILLUMINATED MONUMENT SIGN  
 S2: ADDA COMPLIANT VERTICAL PARKING SIGN TYPICAL AT EACH ADDA PARKING SPACE  
 S3: FIRE ROUTE SIGNAGE

**LEGEND**  
 --- LINE OF SETBACK AS PER ZONING BY-LAW  
 --- PROPERTY LINE  
 --- SUBJECT TO EASEMENT  
 --- OVERHEAD WIRES  
 --- UTILITY POLE  
 --- WALL MOUNTED LIGHT FIXTURE REFER TO ELECTRICAL  
 --- EXTERIOR LIGHT STANDARD REFER TO ELECTRICAL  
 --- GEN: GENERATOR  
 --- TR: TRANSFORMER  
 --- BH: POST-MOUNTED BLOCK HEATER OUTLETS - DUAL RECEPTACLE  
 --- LS-E: EXISTING LIGHT STANDARD  
 --- S: NEW SITE LIGHTING FIXTURE REFER TO ELECTRICAL  
 --- P: PRECAST CONCRETE PAVERS  
 --- F: FIRE ROUTE  
 --- SOD: REFER TO LANDSCAPE PLAN  
 --- S: NEW SHRUBS, REFER TO LANDSCAPE PLAN  
 --- T: NEW TREE, REFER TO LANDSCAPE PLAN

**LEGEND (CONT.)**  
 --- 2.4M HIGH GALVANIZED CHAIN LINK FENCE WITH 3 ROWS OF BARS WIRE  
 --- GALVANIZED TRAFFIC BARRIER GUARDRAIL ON STEEL POSTS  
 --- BUILDING ENTRANCE  
 --- 203mm DIAMETER CONCRETE-FILLED BOLLARD  
 --- OVERHEAD DOOR  
 --- SC: SIAMSE FIRE DEPARTMENT CONNECTION  
 --- NEW FIRE HYDRANT  
 --- EXISTING FIRE HYDRANT  
 --- SAN-E: EXISTING MANHOLE - SANITARY  
 --- STM-E: EXISTING MANHOLE - STORM  
 --- CB: NEW CATCH BASIN  
 --- EXISTING CATCH BASIN  
 --- B: BARRIER FREE PARKING STALL  
 --- NEW HORIZONTAL BICYCLE PARKING  
 --- CROSSWALK PAINT MARKINGS  
 --- (TWSI) TACTILE WALKING SURFACE INDICATOR  
 --- DEPRESSED CURB

**01 SITE PLAN NOTES, LEGEND, AND ABBREVIATIONS**  
SP-01 Scale: N/A

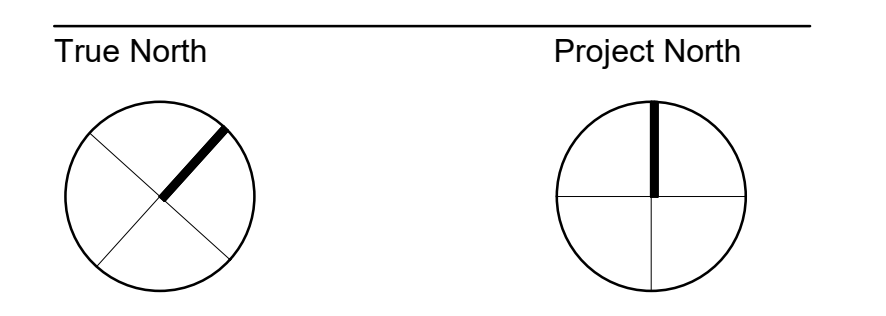
**CONSULTANTS**

**CLELAND JARDINE ENGINEERING LTD.**  
STRUCTURAL ENGINEERS  
200 - 580 TERRY FOX DRIVE, KANATA, ON, K2L 4B9  
TEL: 613-591-1533

**MCKEE ENGINEERING**  
ELECTRICAL & MECHANICAL ENGINEERS  
1785 WOODWARD DRIVE, OTTAWA, ON, K2C 0P9  
TEL: 613-723-9585

**ROBINSON CONSULTANTS INC.**  
CIVIL ENGINEERS  
200 - 350 PALLADIUM DRIVE, OTTAWA, ON, K2V 1A8  
TEL: 613-922-6060

**LEVSTEK CONSULTANTS INC.**  
LANDSCAPE ARCHITECTS  
5871 HUGH CRESCENT, OSGOODE, ON K0A 2W0  
TEL: 613-826-0518



**Revisions**

Revision Number	Description	Date
1	ISSUED FOR SITE PLAN APPLICATION	2020-12-16

**Project**

**MARITIME-ONTARIO OTTAWA**

8800 CAMPEAU DRIVE  
OTTAWA, ON  
K2S 1B9  
Drawing

**SITE PLAN**

Scale: As indicated Stamp: [Stamp]

Drawn: RH

Checked: DM

ONTARIO ASSOCIATION OF ARCHITECTS  
JILL COLLEEN THAYER SPRING LICENCE 5833

Project No. 19-247 Drawing No. SP-01  
Date 2020/07/21







