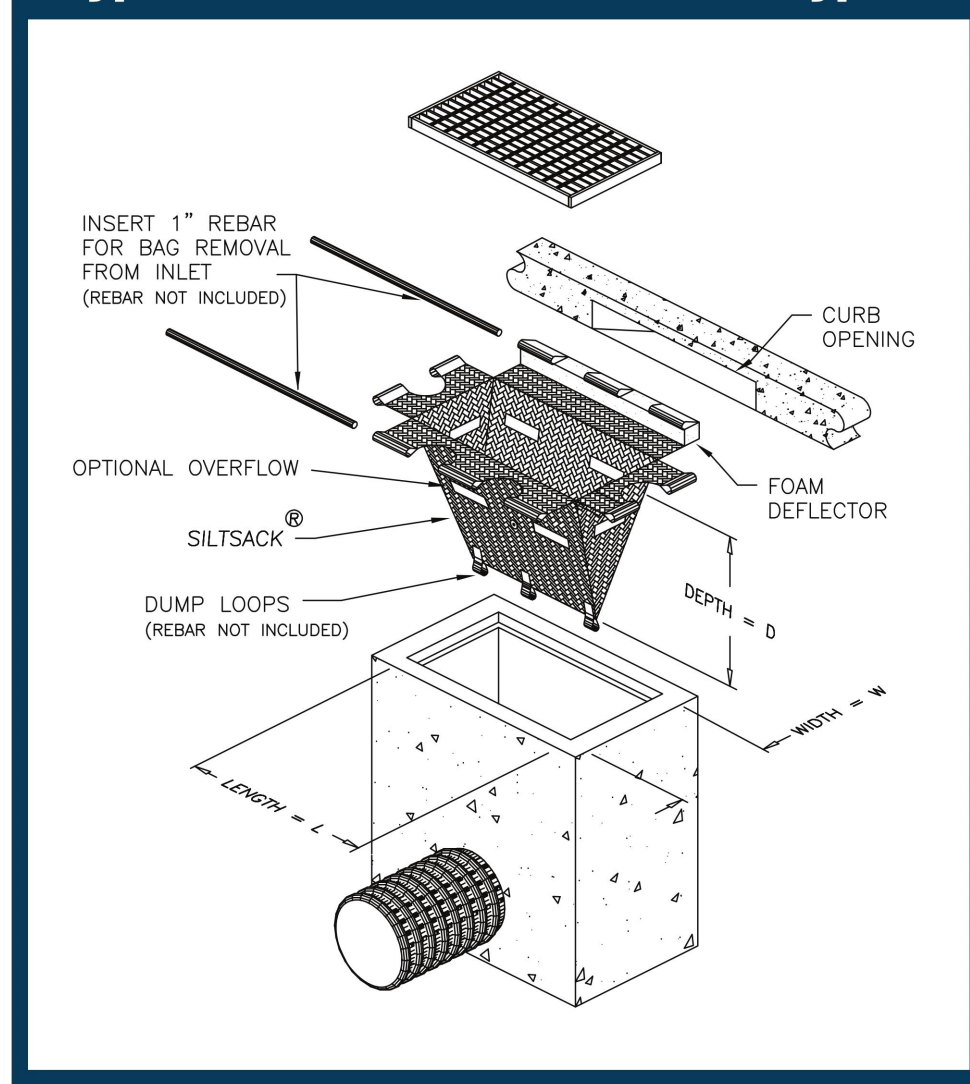
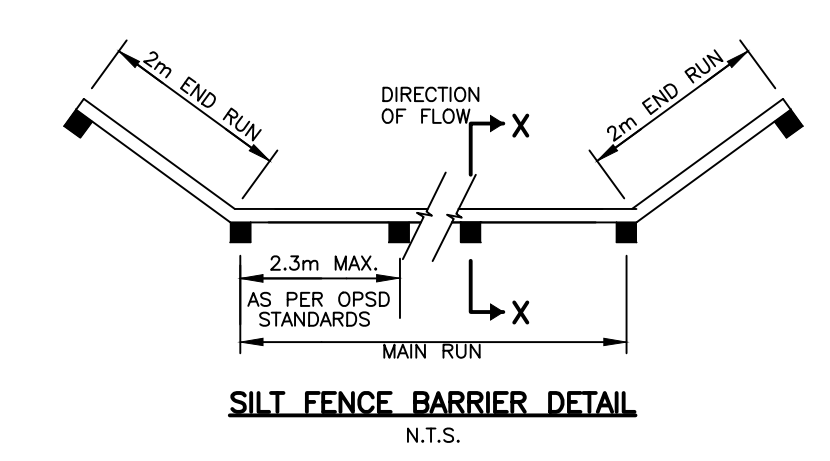
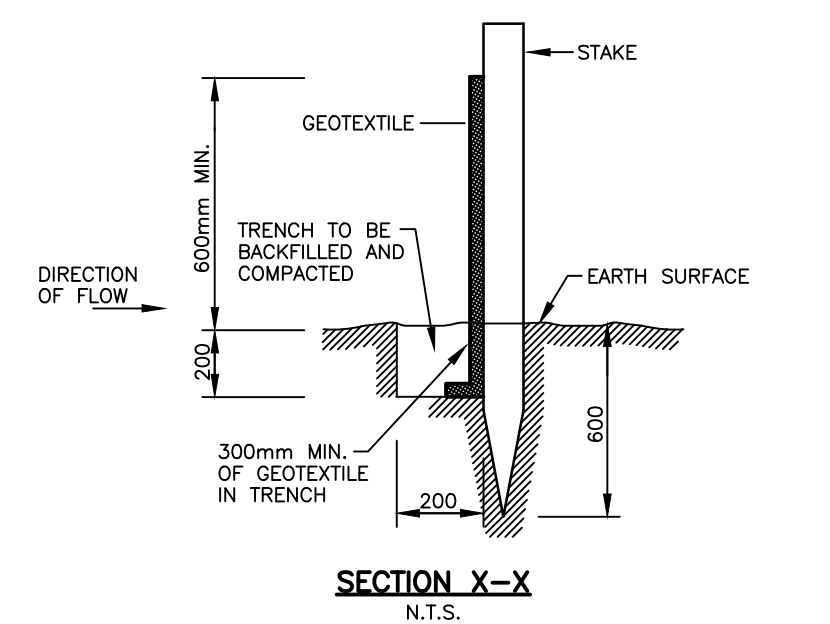
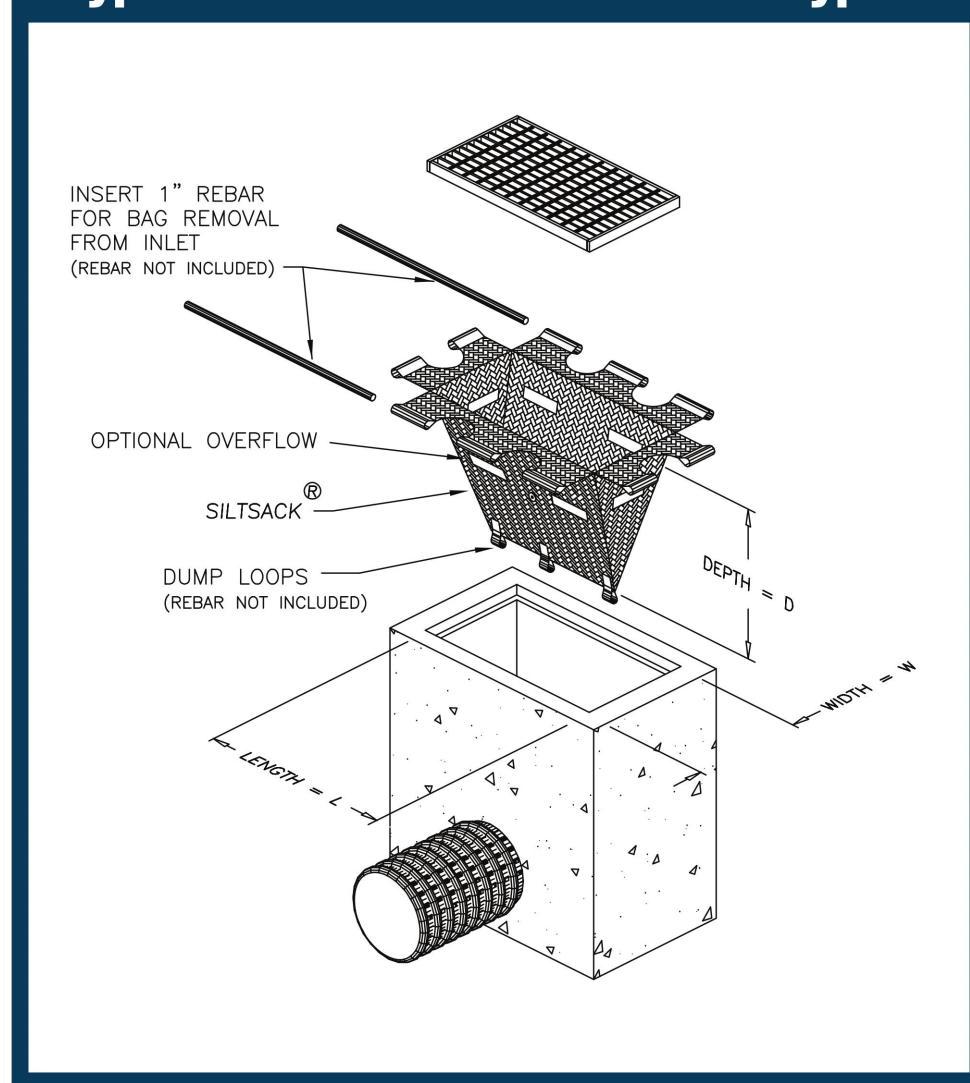


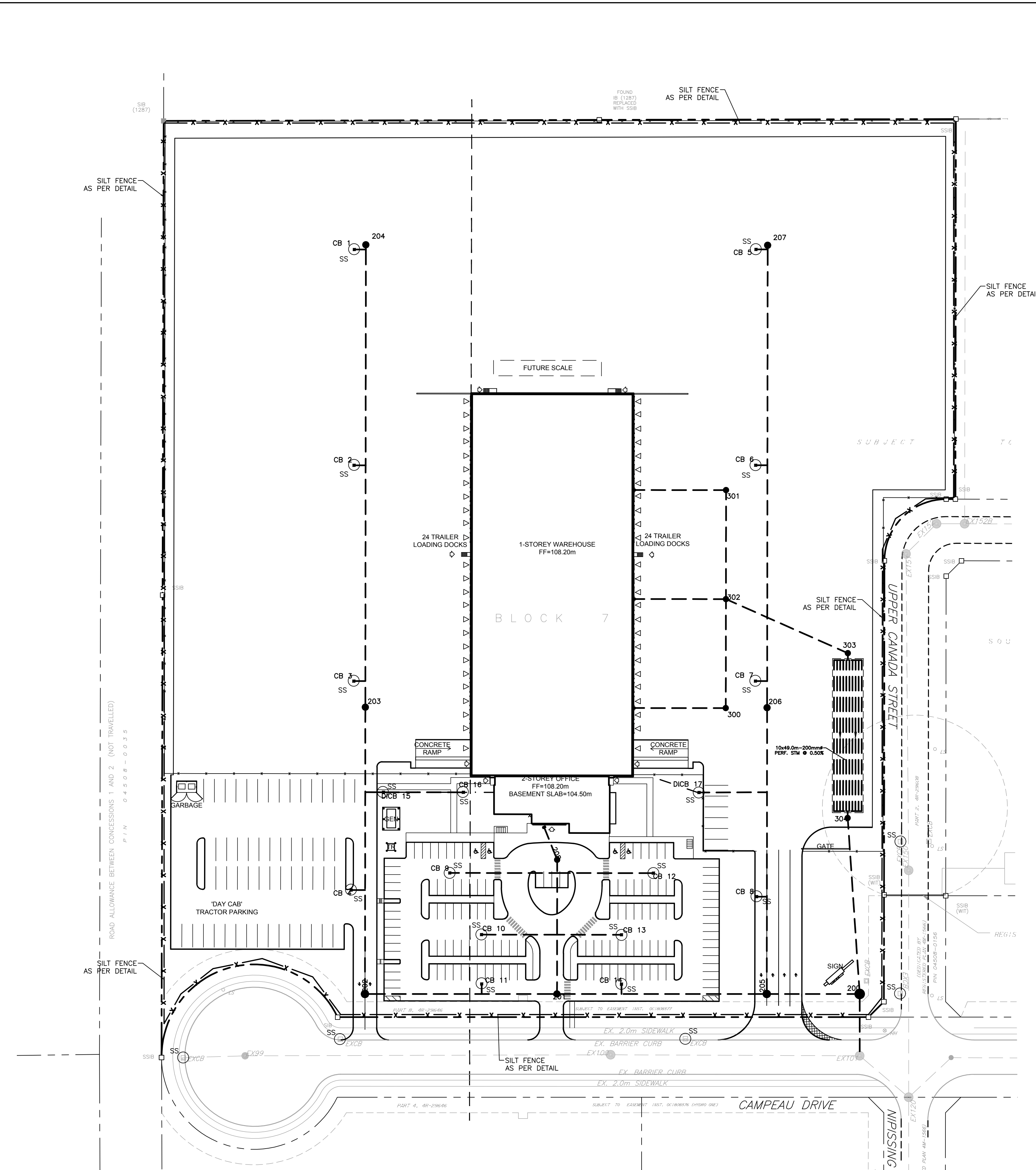
Typical Siltsack® Construction - Type A



Typical Siltsack® Construction - Type B



- NOTES:**
1. THE CONTRACTOR SHALL IMPLEMENT BEST MANAGEMENT PRACTICES TO PROVIDE FOR PROTECTION OF THE AREA DRAINAGE SYSTEM AND THE ULTIMATE RECEIVING WATERCOURSE DURING CONSTRUCTION ACTIVITIES. THE CONTRACTOR ACKNOWLEDGES THAT FAILURE TO IMPLEMENT APPROPRIATE EROSION AND SEDIMENT CONTROL MEASURES MAY BE SUBJECT TO PENALTIES IMPOSED BY ANY APPLICABLE REGULATORY AGENCY.
 2. LIMIT THE EXTENT OF EXPOSED SOILS AT ANY GIVEN TIME.
 3. EROSION AND SEDIMENT CONTROL MEASURES SHALL BE MAINTAINED UNTIL VEGETATION HAS BEEN RE-ESTABLISHED IN ALL DISTURBED AREAS. RE-VEGETATE DISTURBED AREAS IN ACCORDANCE WITH APPROVED LANDSCAPE PLAN AS SOON AS POSSIBLE.
 4. STOCKPILE SOIL AWAY (15 METRES OR GREATER) FROM WATERCOURSES, DRAINAGE FEATURES AND TOP OF STEEP SLOPES.
 5. SILT SACKS ARE TO BE PLACED UNDERNEATH THE FRAME AND COVER OF ALL PROPOSED AND EXISTING CATCH BASINS AND OPEN COVER STORM MANHOLES UNTIL CONSTRUCTION IS COMPLETED.
 6. A SILT FENCE BARRIER SHALL BE INSTALLED AS PER OPSS 219.1100 WHERE INDICATED AND MAINTAINED AS REQUIRED.
 7. DURING ACTIVE CONSTRUCTION PERIODS, VISUAL INSPECTIONS SHALL BE UNDERTAKEN ON A WEEKLY BASIS AND AFTER MAJOR STORM EVENTS (>25mm RAIN IN 24 HOUR PERIOD) ON SEDIMENT CONTROL BARRIERS AND ANY DAMAGE REPAIRED IMMEDIATELY.
 8. EROSION AND SEDIMENT CONTROL BARRIERS SHALL ALSO BE ASSESSED (AND REPAIRED AS REQUIRED) FOLLOWING SIGNIFICANT SNOWMELT EVENTS.
 9. VISUAL INSPECTIONS SHALL ALSO BE UNDERTAKEN IN ANTICIPATION OF LARGE STORM EVENTS (OR A SERIES OF RAINFALL AND/OR SNOWMELT DAYS) THAT COULD POTENTIALLY YIELD SIGNIFICANT RUNOFF VOLUMES.
 10. CARE SHALL BE TAKEN TO PREVENT DAMAGE TO EROSION AND SEDIMENT CONTROLS DURING CONSTRUCTION OPERATIONS.
 11. IN SOME CASES, BARRIERS MAY BE REMOVED TEMPORARILY TO ACCOMMODATE THE CONSTRUCTION OPERATIONS. THE AFFECTED BARRIERS SHALL BE REINSTITATED IMMEDIATELY AFTER CONSTRUCTION OPERATIONS ARE COMPLETED.
 12. SEDIMENT CONTROL DEVICES SHALL BE CLEANED OF ACCUMULATED SEDIMENTATION AS REQUIRED AND NECESSARY.
 13. DURING THE COURSE OF CONSTRUCTION, IF THE ENGINEER BELIEVES THAT ADDITIONAL PREVENTION METHODS ARE REQUIRED TO CONTROL EROSION AND SEDIMENTATION, THE CONTRACTOR SHALL IMPLEMENT ADDITIONAL MEASURES, AS REQUIRED, TO THE SATISFACTION OF THE ENGINEER.
 14. CONSTRUCTION AND MAINTENANCE REQUIREMENTS FOR EROSION AND SEDIMENT CONTROLS ARE TO COMPLY WITH OPSS 805.

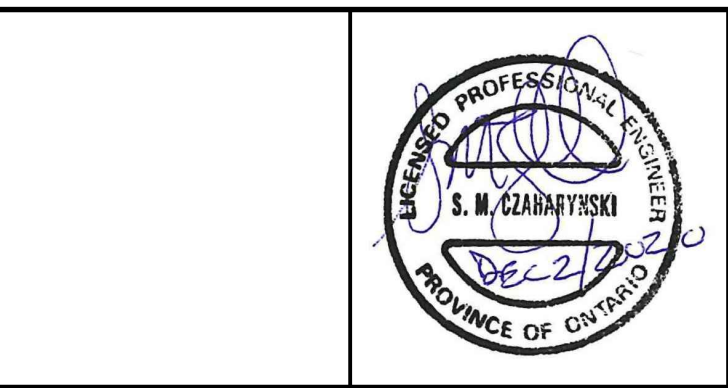
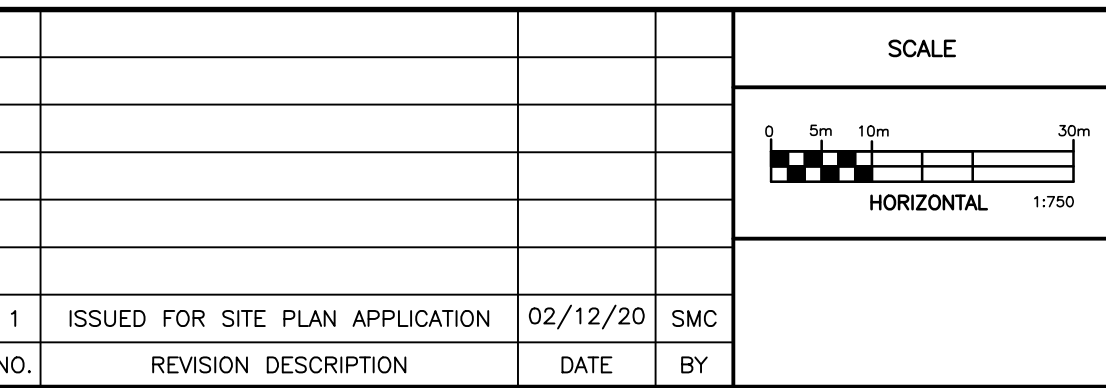


NOT FOR CONSTRUCTION

NOTES

THE POSITION OF ALL POLE LINES, CONDUITS, WATERMANS, SEWERS AND OTHER UNDERGROUND AND OVERGROUND UTILITIES AND STRUCTURES IS NOT NECESSARILY SHOWN ON THE CONTRACT DRAWINGS, AND WHERE SHOWN, THE ACCURACY OF THE POSITION OF SUCH UTILITIES AND STRUCTURES IS NOT GUARANTEED. BEFORE STARTING WORK, DETERMINE THE EXACT LOCATION OF ALL SUCH UTILITIES AND STRUCTURES AND ASSUME ALL LIABILITY FOR DAMAGE TO THEM.

NO.	REVISION DESCRIPTION	DATE	BY
1	ISSUED FOR SITE PLAN APPLICATION	02/12/20	SMC



Robinson Land Development

350 Palladium Drive
Ottawa, ON K2V 1A8
(613) 592-6060 roii.com

DESIGN	BLM
CHECKED	SMC
DRAWN	BLM
CHECKED	SMC
APPROVED	SMC

MARITIME-ONTARIO FREIGHT LINES LIMITED

KANATA WEST BUSINESS PARK
8800 CAMPEAU DRIVE, OTTAWA, ON

EROSION AND SEDIMENT CONTROL PLAN

PROJECT No. 20027
SURVEY STANTEC
DATED DECEMBER 2020
DWG. No. 20027-ESC1