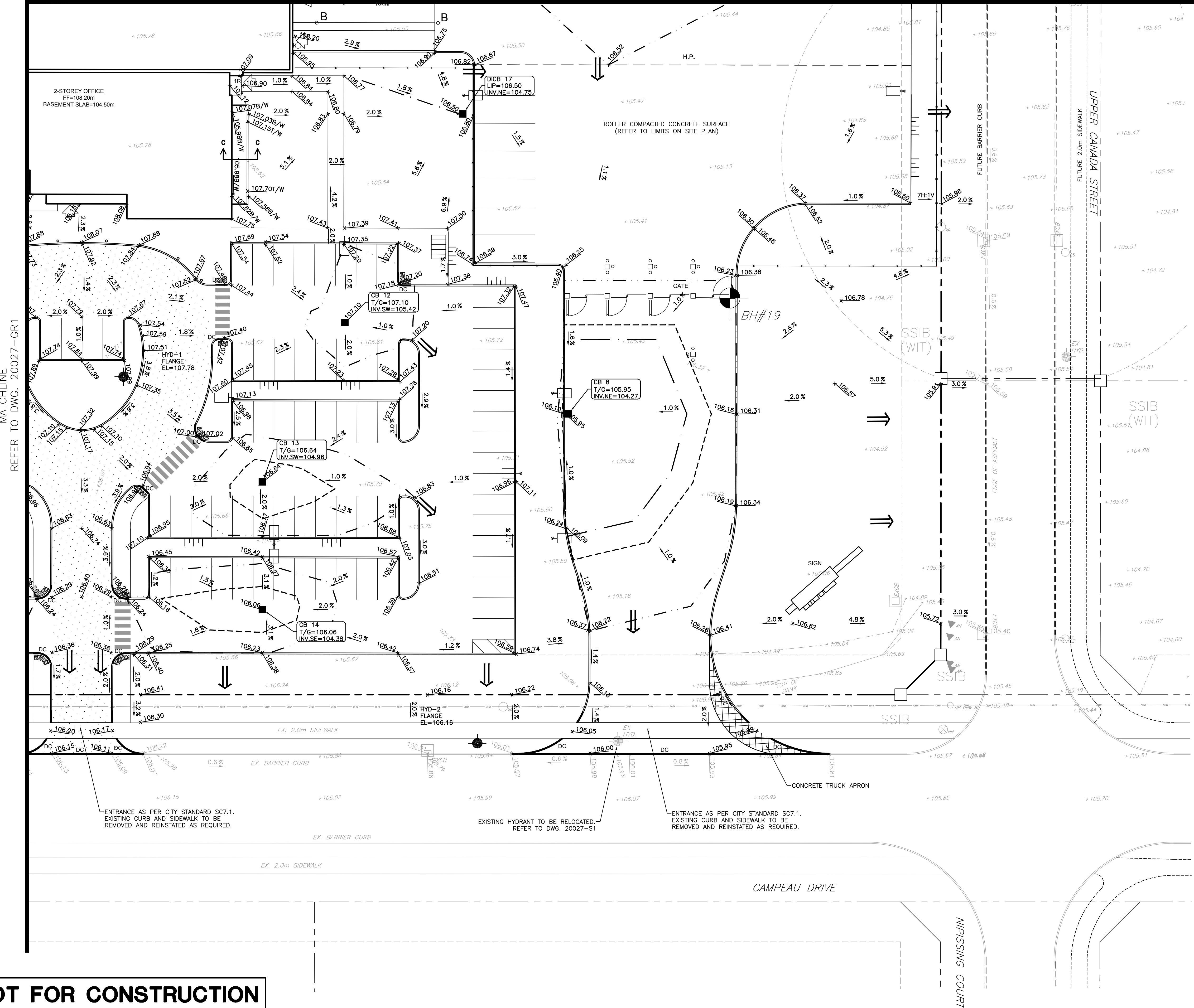
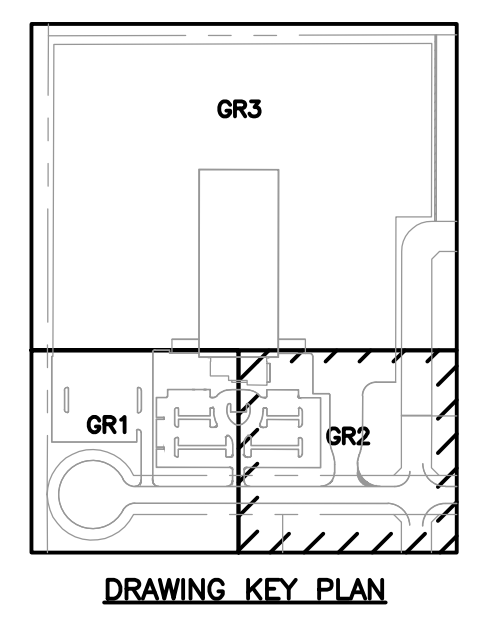
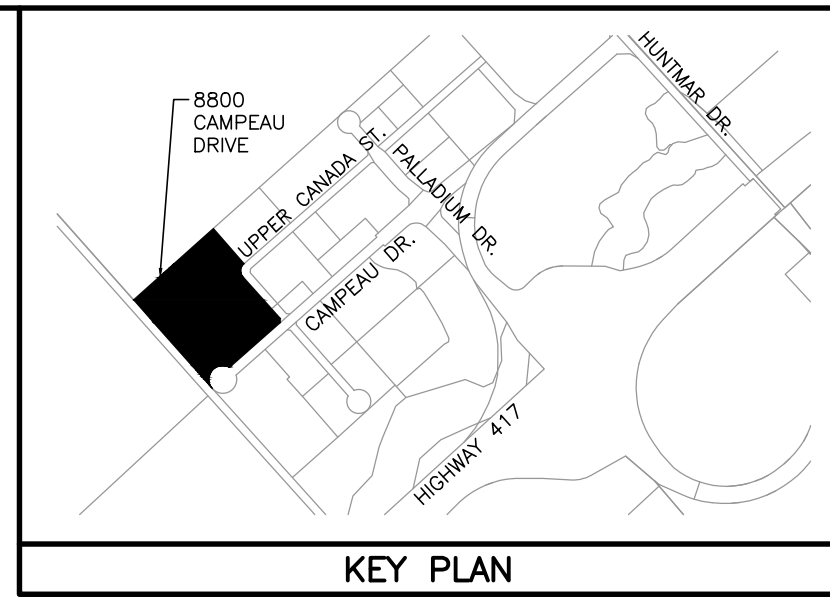
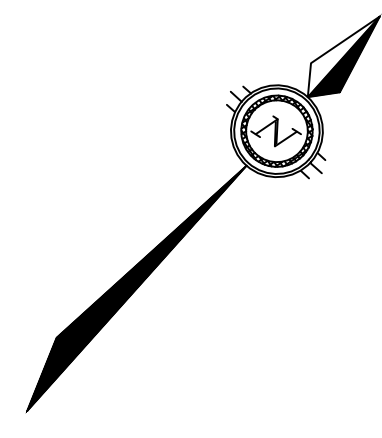
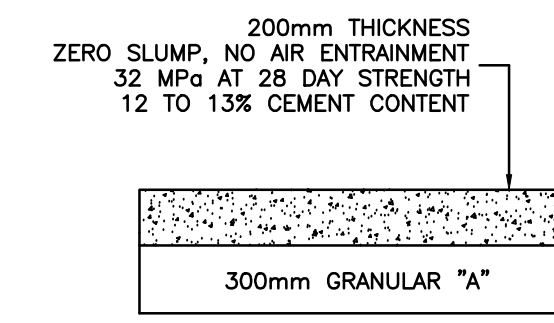


MATCHLINE
REFER TO DWG. 20027-GR3



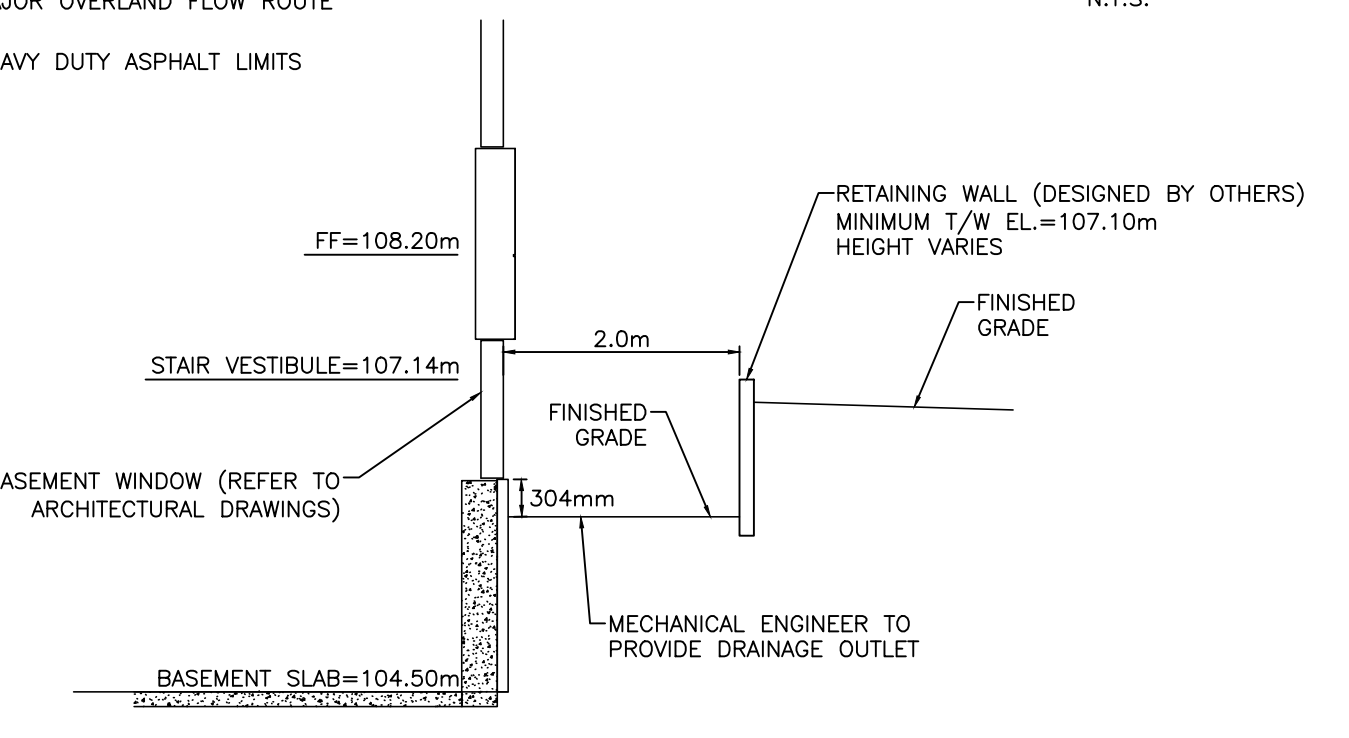
LEGEND

- EXISTING ELEVATION
- PROPOSED GRADE
- PROPOSED DRAINAGE SLOPE AND DIRECTION
- IBI GROUP DESIGN GRADE
- PROPERTY BOUNDARY
- CATCH BASIN
- EXISTING CATCH BASIN
- EXISTING HYDRANT
- SWALE
- H.P. HIGH POINT
- DC DEPRESSED CURB
- TERRACING (3H:1V MAX.)
- 100m NO-BUILD SETBACK
- 2 YEAR PONDING LIMIT
- 5 YEAR PONDING LIMIT
- 100 YEAR PONDING LIMIT
- BOREHOLE
- BUILDING ENTRANCE (REFER TO SITE PLAN)
- GALVANIZED CHAIN LINK FENCE (REFER TO SITE PLAN)
- GALVANIZED W-BEAM GUARDRAIL (OPSD 912.130)
- BOLLARD (REFER TO SITE PLAN)
- POST-MOUNTED BLOCK HEATER (REFER TO SITE PLAN)
- LIGHT STANDARD (REFER TO SITE PLAN)
- TWS (REFER TO SITE PLAN)
- MAJOR OVERLAND FLOW ROUTE
- HEAVY DUTY ASPHALT LIMITS



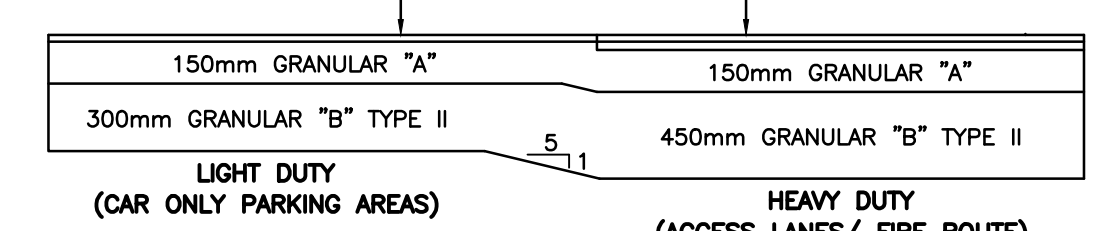
- NOTE:
- REFER TO GEOTECHNICAL INVESTIGATION PREPARED BY PATERSON GROUP, REPORT PG5618-1, DATED APRIL 9, 2021.
 - REFER TO LIMITS OF INSTALLATION ON SITE PLAN.

ROLLER COMPACTED CONCRETE PAVEMENT STRUCTURE DETAIL
N.T.S.



WINDOW WELL SECTION C-C
N.T.S.

- 50mm WEAR COURSE - HL 3 OR SUPERPAVE 12.5 ASPHALTIC CONCRETE
- 40mm WEAR COURSE - SUPERPAVE 12.5 ASPHALTIC CONCRETE
- 50mm BINDER COURSE - SUPERPAVE 19.0 ASPHALTIC CONCRETE



ASPHALT PAVEMENT STRUCTURE DETAIL
N.T.S.

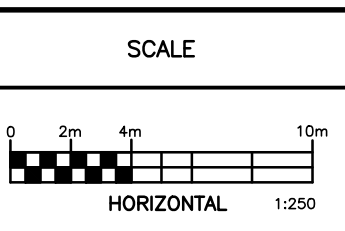
- NOTE:
- REFER TO GEOTECHNICAL INVESTIGATION PREPARED BY PATERSON GROUP, REPORT PG5618-1, DATED APRIL 9, 2021.
 - REFER TO LIMITS OF INSTALLATION ON SITE PLAN.

LOCATION	2 YEAR SURFACE STORAGE AREAS			5 YEAR SURFACE STORAGE AREAS			100 YEAR SURFACE STORAGE AREAS		
	STORAGE VOLUME (m³)	PONDING DEPTH (m)	PONDING ELEVATION (m)	STORAGE VOLUME (m³)	PONDING DEPTH (m)	PONDING ELEVATION (m)	STORAGE VOLUME (m³)	PONDING DEPTH (m)	PONDING ELEVATION (m)
CB 8	15.3	0.15	106.10	26.5	0.18	106.13	86.7	0.27	106.22
CB 12	N/A	N/A	N/A	N/A	N/A	N/A	4.6	0.10	107.20
CB 13	N/A	N/A	N/A	1.8	0.09	106.73	16.6	0.19	106.83
CB 14	N/A	N/A	N/A	2.1	0.09	106.15	15.7	0.18	106.24
CB 17	N/A	N/A	N/A	N/A	N/A	N/A	N/A	N/A	N/A

NOT FOR CONSTRUCTION

NOTES
THE POSITION OF ALL POLE LINES, CONDUITS, WATERMANS, SEWERS AND OTHER UNDERGROUND AND OVERGROUND UTILITIES AND STRUCTURES IS NOT NECESSARILY SHOWN ON THE CONTRACT DRAWINGS, AND WHERE SHOWN, THE ACCURACY OF THE POSITION OF SUCH UTILITIES AND STRUCTURES IS NOT GUARANTEED. BEFORE STARTING WORK, DETERMINE THE EXACT LOCATION OF ALL SUCH UTILITIES AND STRUCTURES AND ASSUME ALL LIABILITY FOR DAMAGE TO THEM.

NO.	REVISION DESCRIPTION	DATE	BY
5	REVISED PER COMMENTS	09/08/21	SMC
4	ISSUED FOR TENDER	11/06/21	SMC
3	REVISED PER COMMENTS	28/05/21	SMC
2	ISSUED FOR PROGRESS REVIEW	22/03/21	SMC
1	ISSUED FOR SITE PLAN APPLICATION	02/12/20	SMC



Robinson
Land Development

350 Palladium Drive
Ottawa, ON K2V 1A8
(613) 592-6060 rcii.com

DESIGN	BLM
CHECKED	SMC
DRAWN	BLM
CHECKED	SMC
APPROVED	SMC

MARITIME-ONTARIO
FREIGHT LINES LIMITED

KANATA WEST BUSINESS PARK
8800 CAMPEAU DRIVE, OTTAWA, ON

GRADING PLAN

PROJECT No.	20027
SURVEY	STANTEC
DATED	AUGUST 2021
DWG. No.	20027-GR2