

- LEGEND**
- +106.00 EXISTING ELEVATION
  - x107.00 PROPOSED GRADE
  - 2.0% PROPOSED DRAINAGE SLOPE AND DIRECTION
  - x107.00 IBI GROUP DESIGN GRADE
  - PROPERTY BOUNDARY
  - CATCH BASIN
  - EXISTING CATCH BASIN
  - EXISTING HYDRANT
  - SWALE
  - H.P. HIGH POINT
  - DC DEPRESSED CURB
  - TERRACING (3H:1V MAX.)
  - 100m NO-BUILD SETBACK
  - 5 YEAR PONDING LIMIT
  - 100 YEAR PONDING LIMIT
  - BOREHOLE
  - △ BUILDING ENTRANCE (REFER TO SITE PLAN)
  - B BOLLARD (REFER TO SITE PLAN)
  - BH BLOCK HEATER POST (REFER TO SITE PLAN)
  - LIGHT STANDARD (REFER TO SITE PLAN)
  - JERSEY BARRIER (REFER TO SITE PLAN)
  - ⇒ MAJOR OVERLAND FLOW ROUTE
  - HEAVY DUTY ASPHALT LIMITS

MATCHLINE  
REFER TO DWG. 20027-GR1

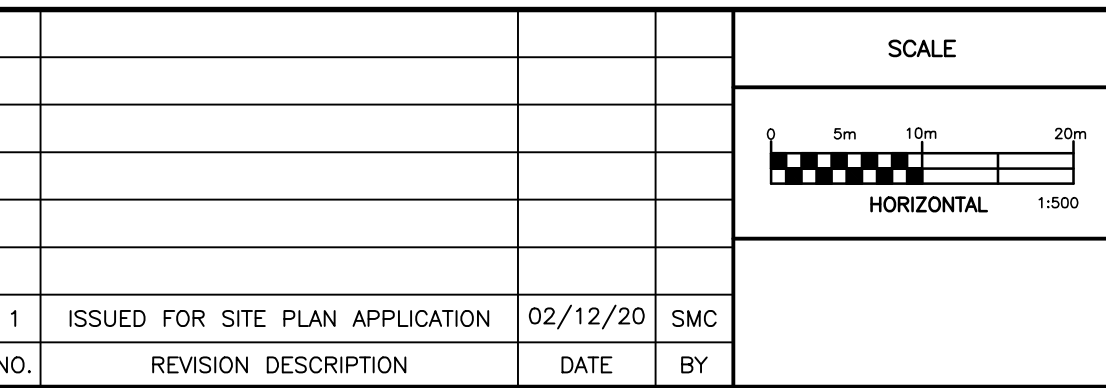
MATCHLINE  
REFER TO DWG. 20027-GR2

**NOT FOR CONSTRUCTION**

NOTES

THE POSITION OF ALL POLE LINES, CONDUITS, WATERMANS, SEWERS AND OTHER UNDERGROUND AND OVERGROUND UTILITIES AND STRUCTURES IS NOT NECESSARILY SHOWN ON THE CONTRACT DRAWINGS, AND WHERE SHOWN, THE ACCURACY OF THE POSITION OF SUCH UTILITIES AND STRUCTURES IS NOT GUARANTEED. BEFORE STARTING WORK, DETERMINE THE EXACT LOCATION OF ALL SUCH UTILITIES AND STRUCTURES AND ASSUME ALL LIABILITY FOR DAMAGE TO THEM.

NO.	REVISION DESCRIPTION	DATE	BY
1	ISSUED FOR SITE PLAN APPLICATION	02/12/20	SMC



**Robinson**  
Land Development

350 Palladium Drive  
Ottawa, ON K2V 1A8  
(613) 592-6060 rcii.com

DESIGN	BLM
CHECKED	SMC
DRAWN	BLM
CHECKED	SMC
APPROVED	SMC

MARITIME-ONTARIO  
FREIGHT LINES LIMITED

KANATA WEST BUSINESS PARK  
8800 CAMPEAU DRIVE, OTTAWA, ON

GRADING PLAN

PROJECT No.	20027
SURVEY	STANTEC
DATED	DECEMBER 2020
DWG. No.	20027-GR3