

STORM MANHOLE TABLE				
STRUCTURE	STRUCTURE SIZE	T/G ELEV	INVERT	GRATE
EX101	2400mm#	105.88	SW=101.44 E=101.41 NW=101.86	S24.1
200	2400mm#	105.88	NW=103.82 SW=102.04 SE=101.98	S24.1
201	1500mm#	106.37	SW=102.67 NW=103.24 NE=102.64	S24.1
202	1800mm#	106.43	NW=102.96 NE=102.90	S24.1
203	1500mm#	106.35	NW=103.32 SE=103.29	S24.1
204	1500mm#	106.46	SE=103.76	S24.1
205	1800mm#	106.23	NW=102.42 SW=102.34 NE=102.19	S24.1
206	1500mm#	106.33	NW=102.96 SE=102.93	S24.1
207	1500mm#	106.46	SE=103.78	S24.1
208	1200mm#	106.66	NW=105.13 SE=105.08	S24.1
300	1200mm#	106.44	NW=104.94 SW=105.00	S24.1
301	1200mm#	106.47	SE=104.94 SW=105.00	S24.1
302	1200mm#	106.55	SE=104.76 NE=104.68 NW=104.76 SW=104.76	S24.1
303	1200mm#	106.76	SW=104.56 SE=104.50 SE=105.18	S24.1
304	1200mm#	106.48	NW=104.12 SE=104.09 NW=104.84	S24.1

SANITARY MANHOLE TABLE				
STRUCTURE	STRUCTURE SIZE	T/G ELEV	INVERT	GRATE
100	1200mm#	106.28	NW=104.49 SE=104.46	S24
101	1200mm#	106.28	SE=104.66 NW=104.69	S24

CATCH BASIN TABLE				
STRUCTURE	STRUCTURE SIZE	T/G ELEV	INVERT	GRATE
CB 1	600x600mm	106.42	NE=104.74	S19
CB 2	600x600mm	106.32	NE=104.64	S19
CB 3	600x600mm	106.22	NE=104.54	S19
CB 4	600x600mm	106.15	NE=104.47	S19
CB 5	600x600mm	106.42	NE=104.74	S19
CB 6	600x600mm	106.32	NE=104.64	S19
CB 7	600x600mm	106.22	NE=104.54	S19
CB 8	600x600mm	105.95	NE=104.27	S19
CB 9	600x600mm	107.10	NE=105.42	S19
CB 10	600x600mm	106.64	NE=105.13	S19
CB 11	600x600mm	106.06	SE=104.38	S19
CB 12	600x600mm	107.10	SW=105.42	S19
CB 13	600x600mm	106.64	SW=104.96	S19
CB 14	600x600mm	106.06	SE=104.38	S19
CB 16	600x600mm	106.61	SW=105.41	S19
DICB 15	600x600mm	106.42	SW=104.67 NE=105.15	403.010
DICB 17	600x600mm	106.50	NE=104.75	403.010

- LEGEND**
- PROPERTY BOUNDARY
 - CATCH BASIN
 - STORM SEWER & MANHOLE
 - SANITARY SEWER & MANHOLE
 - WATERMAIN
 - ◆ HYDRANT
 - ⊕ VALVE & VALVE BOX
 - ⊕ SIAMESE CONNECTION
 - EXISTING CATCH BASIN
 - EXISTING STORM SEWER & MANHOLE
 - EXISTING SANITARY SEWER & MANHOLE
 - EXISTING WATERMAIN
 - ◆ EXISTING HYDRANT
 - ⊕ EXISTING VALVE & VALVE BOX
 - 100m NO-BUILD SETBACK
 - ▨ CLAY SEAL
 - ⊕ BOREHOLE
 - ⊕ CROSSING NUMBER
 - GALVANIZED CHAIN LINK FENCE (REFER TO SITE PLAN)
 - GALVANIZED W-BEAM GUARDRAIL (OPSD 912.130)
 - △ BUILDING ENTRANCE (REFER TO SITE PLAN)
 - BOLLARD (REFER TO SITE PLAN)
 - BH POST-MOUNTED BLOCK HEATER (REFER TO SITE PLAN)
 - LIGHT STANDARD (REFER TO SITE PLAN)
 - JERSEY BARRIER (REFER TO SITE PLAN)
 - TWSI (REFER TO SITE PLAN)
 - PROPOSED TREE (REFER TO LANDSCAPE PLAN)

MATCHLINE
REFER TO DWG. 20027-S1

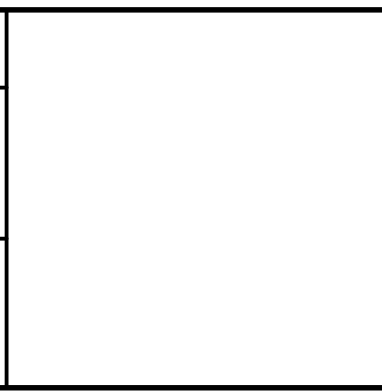
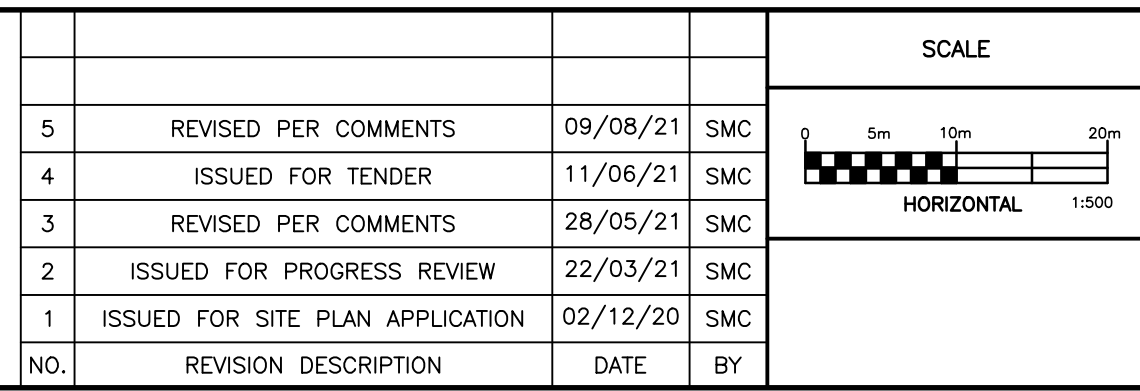
ICD DESIGN TABLE				
STRUCTURE	100 YEAR OUTFLOW (L/s)	100 YEAR HEAD (m)	ORIFICE DIAMETER (mm)	TYPE
CB 1	120	1.78	204.1	SLIDE
CB 2	60	1.79	144.1	SLIDE
CB 3	80	1.79	166.4	SLIDE
CB 4	60	1.81	143.8	SLIDE
CB 5	120	1.78	204.1	SLIDE
CB 6	60	1.77	144.5	SLIDE
CB 7	30	1.83	101.4	SLIDE
CB 8	25	1.83	92.6	SLIDE
CB 9	55	1.66	140.8	SLIDE
CB 10	30	1.58	105.3	SLIDE
CB 11	25	1.74	93.8	SLIDE
CB 12	40	1.66	120.1	SLIDE
CB 13	30	1.75	102.6	SLIDE
CB 14	25	1.74	93.8	SLIDE
DICB 15	20	1.63	85.3	SLIDE
DICB 17	20	1.63	85.3	SLIDE

NOT FOR CONSTRUCTION

NOTES

THE POSITION OF ALL POLE LINES, CONDUITS, WATERMANS, SEWERS AND OTHER UNDERGROUND AND OVERGROUND UTILITIES AND STRUCTURES IS NOT NECESSARILY SHOWN ON THE CONTRACT DRAWINGS, AND WHERE SHOWN, THE ACCURACY OF THE POSITION OF SUCH UTILITIES AND STRUCTURES IS NOT GUARANTEED. BEFORE STARTING WORK, DETERMINE THE EXACT LOCATION OF ALL SUCH UTILITIES AND STRUCTURES AND ASSUME ALL LIABILITY FOR DAMAGE TO THEM.

NO.	REVISION DESCRIPTION	DATE	BY
5	REVISED PER COMMENTS	09/08/21	SMC
4	ISSUED FOR TENDER	11/06/21	SMC
3	REVISED PER COMMENTS	28/05/21	SMC
2	ISSUED FOR PROGRESS REVIEW	22/03/21	SMC
1	ISSUED FOR SITE PLAN APPLICATION	02/12/20	SMC



Robinson Land Development

350 Palladium Drive
Ottawa, ON K2V 1A8
(613) 592-6060 rcii.com

DESIGN	BLM
CHECKED	SMC
DRAWN	BLM
CHECKED	SMC
APPROVED	SMC

MARITIME-ONTARIO FREIGHT LINES LIMITED

KANATA WEST BUSINESS PARK
8800 CAMPEAU DRIVE, OTTAWA, ON

PROJECT No.	
20027	STANTEC
DATE	
AUGUST 2021	DWG. No.
20027-S2	

PROJECT No. 20027
SURVEY STANTEC
DATE AUGUST 2021
DWG. No. 20027-S2