

CATCH-BASIN & MANHOLE SCHEDULE

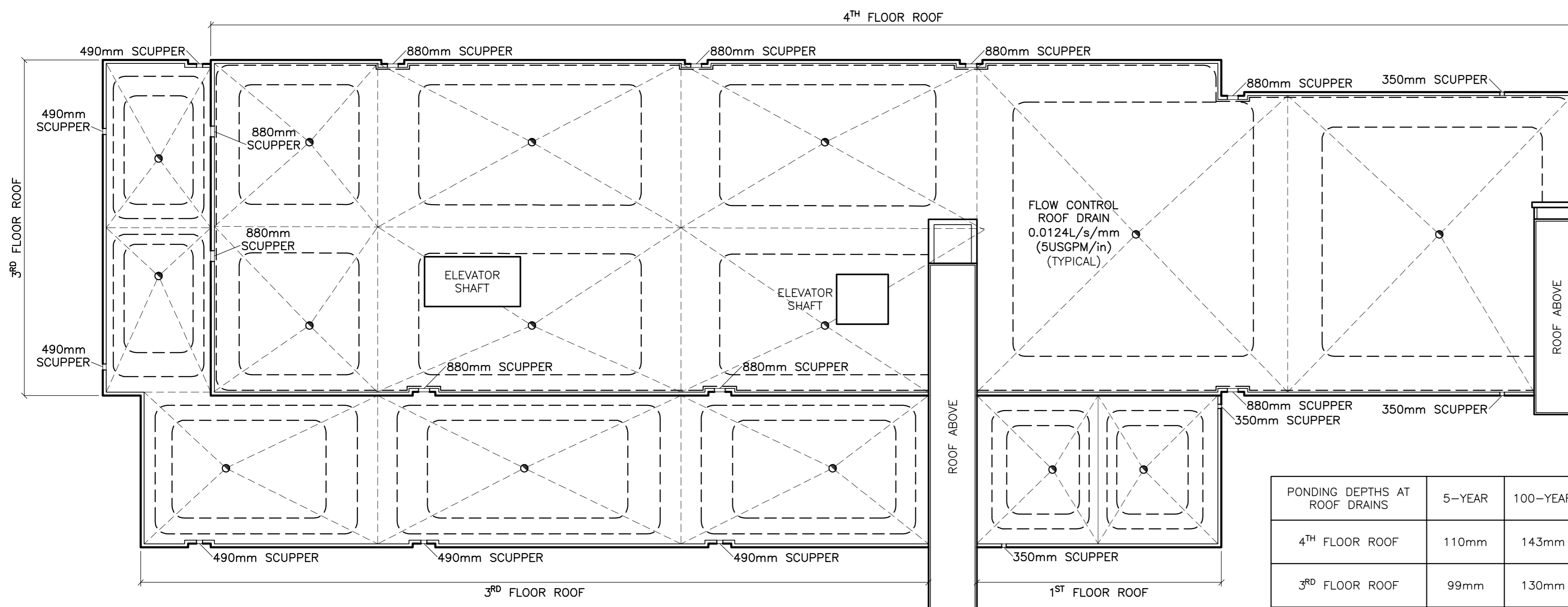
REF	TOP	SIZE	TYPE	INVERT AT INLET	INVERT AT OUTLET	NOTES
STORM SEWER						
CB-1	84.00	600mm x 600mm	PRE-CAST CONCRETE CATCH-BASIN	-	81.69	TO OPSD 705.010 & CITY OF OTTAWA STANDARDS - FRAME & COVER TO CITY OF OTTAWA DRAWING No. S19
CB/MH-2A	84.14	1200mm	PRE-CAST CONCRETE CATCH-BASIN/MANHOLE	81.57(NW)	81.57(E)	TO OPSD 701.010 & CITY OF OTTAWA STANDARDS - FRAME & COVER TO CITY OF OTTAWA DRAWING No. S25 & S28.1 OR OPSD 401.010
CB/MH-2B	84.14	1200mm	PRE-CAST CONCRETE CATCH-BASIN/MANHOLE	81.53(W)	81.53(NE)	TO OPSD 701.010 & CITY OF OTTAWA STANDARDS - FRAME & COVER TO CITY OF OTTAWA DRAWING No. S25 & S28.1 OR OPSD 401.010
CB/MH-3A	84.15	1200mm	PRE-CAST CONCRETE CATCH-BASIN/MANHOLE	81.49(SW)	81.49(N)	TO OPSD 701.010 & CITY OF OTTAWA STANDARDS - FRAME & COVER TO CITY OF OTTAWA DRAWING No. S25 & S28.1 OR OPSD 401.010
CB/MH-3B	84.24	1200mm	PRE-CAST CONCRETE CATCH-BASIN/MANHOLE	81.41(S)	81.41(N)	TO OPSD 701.010 & CITY OF OTTAWA STANDARDS - FRAME & COVER TO CITY OF OTTAWA DRAWING No. S25 & S28.1 OR OPSD 401.010
CB/MH-4	83.96	1200mm	PRE-CAST CONCRETE CATCH-BASIN/MANHOLE	81.15(S)	81.15(N)	TO OPSD 701.010 & CITY OF OTTAWA STANDARDS - FRAME & COVER TO CITY OF OTTAWA DRAWING No. S25 & S28.1 OR OPSD 401.010
CB/MH-5	83.96	1200mm	PRE-CAST CONCRETE CATCH-BASIN/MANHOLE	81.07(S)	81.07(NW)	TO OPSD 701.010 & CITY OF OTTAWA STANDARDS - FRAME & COVER TO CITY OF OTTAWA DRAWING No. S25 & S28.1 OR OPSD 401.010
CB/MH-6	83.96	1200mm	PRE-CAST CONCRETE CATCH-BASIN/MANHOLE	81.00(SE)	81.00(SW)	TO OPSD 701.010 & CITY OF OTTAWA STANDARDS - FRAME & COVER TO CITY OF OTTAWA DRAWING No. S25 & S28.1 OR OPSD 401.010 INSTALL ICD IN OUTLET PIPE
CB-7	83.46	600mm x 600mm	PRE-CAST CONCRETE CATCH-BASIN	-	81.16	TO OPSD 705.010 & CITY OF OTTAWA STANDARDS - FRAME & COVER TO CITY OF OTTAWA DRAWING No. S19
CB/MH-8	83.46	1200mm	PRE-CAST CONCRETE CATCH-BASIN/MANHOLE	-	80.97	TO OPSD 701.010 & CITY OF OTTAWA STANDARDS - FRAME & COVER TO CITY OF OTTAWA DRAWING No. S25 & S28.1 OR OPSD 401.010
MH-9	84.12	1200mm	PRE-CAST CONCRETE MANHOLE	80.97(NE) 80.86(S)	80.78(W)	TO OPSD 701.010 & CITY OF OTTAWA STANDARDS - FRAME & COVER TO CITY OF OTTAWA DRAWING No. S25 & S28.1 OR OPSD 401.010
MH-10	±83.68	1800mm	PRE-CAST CONCRETE MANHOLE	79.85(E) ±79.61(S)	±79.61(N)	TO OPSD 701.010 & CITY OF OTTAWA STANDARDS - FRAME & COVER TO CITY OF OTTAWA DRAWING No. S25 & S28.1 OR OPSD 401.010
MH-11	84.12	1200mm	PRE-CAST CONCRETE MANHOLE	80.38(S) 80.33(E)	80.32(W)	TO OPSD 701.010 & CITY OF OTTAWA STANDARDS - FRAME & COVER TO CITY OF OTTAWA DRAWING No. S25 & S28.1 OR OPSD 401.010
MH-12	84.26	1200mm	PRE-CAST CONCRETE MANHOLE	-	82.26	TO OPSD 701.010 & CITY OF OTTAWA STANDARDS - FRAME & COVER TO CITY OF OTTAWA DRAWING No. S25 & S28.1 OR OPSD 401.010
SANITARY SEWER						
MH-SA.1	84.20	1200mm	PRE-CAST CONCRETE MANHOLE	82.47(E)	82.46(W)	TO OPSD 701.010 & CITY OF OTTAWA STANDARDS - FRAME & COVER TO CITY OF OTTAWA DRAWING No. S25 & S28.1 OR OPSD 401.010

KEY PLAN



APPROVED
By Lily Xu at 2:00 pm, Sep 09, 2022

LILY XU, MCIP, RPP
MANAGER, DEVELOPMENT REVIEW SOUTH
PLANNING, INFRASTRUCTURE & ECONOMIC
DEVELOPMENT DEPARTMENT, CITY OF OTTAWA

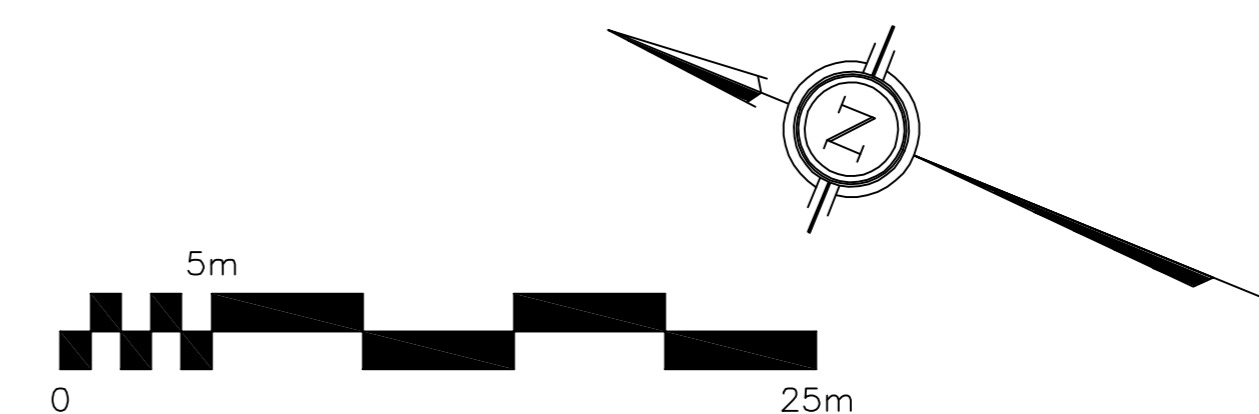


PONDING DEPTHS AT ROOF DRAINS	5-YEAR	100-YEAR
4 TH FLOOR ROOF	110mm	143mm
3 RD FLOOR ROOF	99mm	130mm
1 ST FLOOR ROOF	90mm	121mm

4TH FLOOR ROOF: INSTALL 2 SCUPPERS, EACH A MINIMUM 350mm WIDE AND A MINIMUM OF 9 ADDITIONAL SCUPPERS, EACH A MINIMUM 880mm WIDE. BOTTOM OF SCUPPERS SHALL BE 150mm ABOVE ROOF DRAINS (REFER TO ARCHITECTURAL FOR EXACT LOCATIONS AND DETAILS). ROOF SHALL BE DESIGNED TO CARRY THE LOAD OF WATER HAVING A 50mm DEPTH AT SCUPPER OR 200mm DEPTH AT ROOF DRAIN (REFER TO STRUCTURAL).

3RD FLOOR ROOF: INSTALL A MINIMUM OF 6 SCUPPERS, EACH A MINIMUM 490mm WIDE. BOTTOM OF SCUPPERS SHALL BE 150mm ABOVE ROOF DRAINS (REFER TO ARCHITECTURAL FOR EXACT LOCATIONS AND DETAILS). ROOF SHALL BE DESIGNED TO CARRY THE LOAD OF WATER HAVING A 50mm DEPTH AT SCUPPER OR 200mm DEPTH AT ROOF DRAIN (REFER TO STRUCTURAL).

1ST FLOOR ROOF: INSTALL A MINIMUM OF 2 SCUPPERS, EACH A MINIMUM 350mm WIDE. BOTTOM OF SCUPPERS SHALL BE 150mm ABOVE ROOF DRAINS (REFER TO ARCHITECTURAL FOR EXACT LOCATIONS AND DETAILS). ROOF SHALL BE DESIGNED TO CARRY THE LOAD OF WATER HAVING A 50mm DEPTH AT SCUPPER OR 200mm DEPTH AT ROOF DRAIN (REFER TO STRUCTURAL).



ROOF DRAINAGE PLAN

No.	DATE	REVISION
6	AUG 11-22	ISSUED FOR CONSTRUCTION
5	MAY 31-22	RE-ISSUED FOR APPROVAL
4	NOV 1-21	ISSUED FOR TENDER
3	OCT 8-21	ISSUED FOR BUILDING PERMIT
2	DEC 11-20	ISSUED FOR APPROVAL
1	DEC 9-20	ISSUED FOR COORDINATION

D. B. GRAY ENGINEERING INC.
Stormwater Management - Grading & Drainage - Storm & Sanitary Sewers - Watermain
700 Long Point Circle 613-425-8044
Ottawa, Ontario d.gray@dbgrayengineering.com

Project
**PROPOSED 4-STORY
DYMON STORAGE BUILDING
3455 HAWTHORNE ROAD
OTTAWA, ONTARIO**

Drawing Title
**CB & MH SCHEDULE
& ROOF PLAN**

Engineer's Seal

NOT VALID UNLESS
SIGNED & DATED

Drawn: D.B.G.
Hor. Scale: 1:250
Vert. Scale:
Date: NOV 17-20
Job No.: 19107
Drawing No.:
**C-7
of 8**