

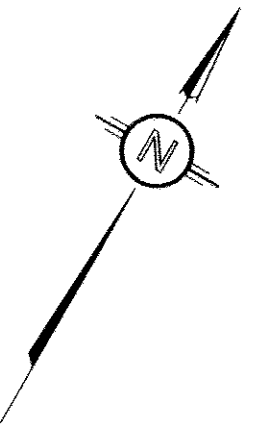
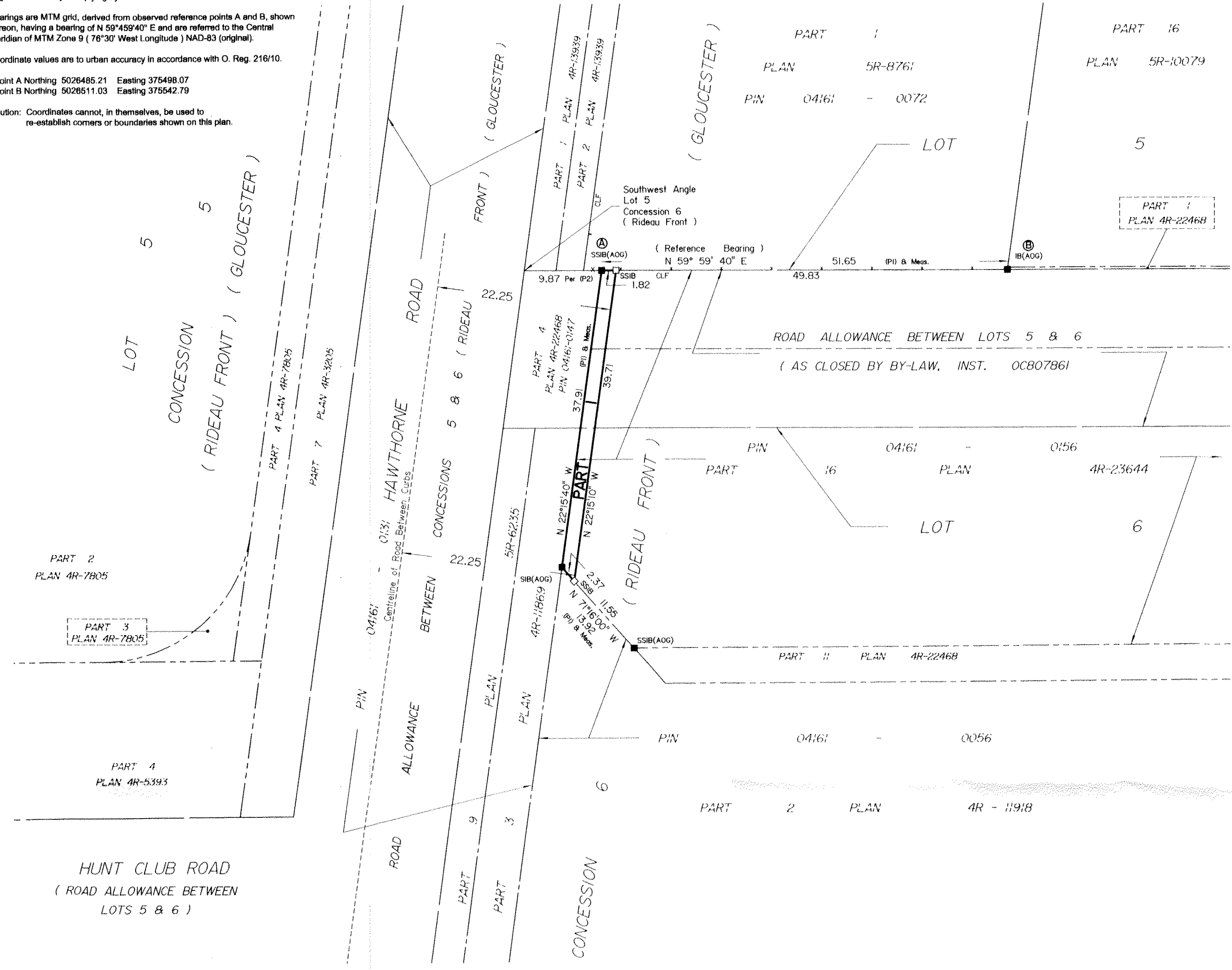
Distances shown on this plan are ground distances and can be converted to grid distances by multiplying by the combined scale factor of 0.99995.

Bearings are MTM grid, derived from observed reference points A and B, shown hereon, having a bearing of N 59°45'40" E and are referred to the Central Meridian of MTM Zone 9 (76°30' West Longitude) NAD-83 (original).

Coordinate values are to urban accuracy in accordance with O. Reg. 216/10.

Point A Northing 5026485.21 Easting 375498.07
Point B Northing 5026511.03 Easting 375542.79

Caution: Coordinates cannot, in themselves, be used to re-establish corners or boundaries shown on this plan.



I REQUIRE THIS PLAN TO BE DEPOSITED UNDER THE LAND TITLES ACT.
DATE: *October 8/2013*
RECEIVED AND DEPOSITED DATE: *OCT. 8, 2013*
C. Holloway
Representative for:
EDWARD M. LANCASTER
ONTARIO LAND SURVEYOR
LAND REGISTRAR FOR THE LAND TITLES DIVISION OF OTTAWA-CARLETON NO. 4.

SCHEDULE			
PART	LOT	CONCESSION	PIN
1	PART OF LOT 6 PART OF ROAD ALLOWANCE BETWEEN LOTS 5 AND 6 (As Closed by By-Law, Inst. OC807861)	6 (RIDEAU FRONT)	PART OF 04161-0156

PLAN OF SURVEY OF
**PART OF LOT 6 and
PART OF THE ROAD ALLOWANCE
BETWEEN LOTS 5 AND 6**
(As Closed by By-Law, Inst. OC807861)
CONCESSION 6 (RIDEAU FRONT)
**Geographic Township of Gloucester
CITY OF OTTAWA**
Surveyed by Annis, O'Sullivan, Vollebakk Ltd.



Metric
DISTANCES AND COORDINATES SHOWN ON THIS PLAN ARE IN METRES AND CAN BE CONVERTED TO FEET BY DIVIDING BY 0.3048.

Surveyor's Certificate
I CERTIFY THAT:
1. This survey and plan are correct and in accordance with the Surveys Act, the Surveyors Act, the Land Titles Act and the regulations made under them.
2. The survey was completed on the 1st day of October, 2013.
October 8/2013 Edward M. Lancaster
Date Edward M. Lancaster
Ontario Land Surveyor

Notes & Legend

□	Denotes	Survey Monument Planted
■	"	Survey Monument Found
SIB	"	Standard Iron Bar
SSIB	"	Short Standard Iron Bar
IB	"	Iron Bar
(WIT)	"	Witness
(AOG)	"	Annis, O'Sullivan, Vollebakk Ltd.
Meas.	"	Measured
CLF	"	Chain Link Fence
(P1)	"	Plan 4R-23644
(P2)	"	Plan 4R-20557

ANNIS, O'SULLIVAN, VOLLEBEKK LTD.
14 Concourse Gate, Suite 500
Nepean, Ont. K2E 7S6
Phone: (613) 727-0850 / Fax: (613) 727-1079
Email: Napean@annisd.com
Ontario Land Surveyors Job No. 13918-13 Ultramar P1 L1 G 6 R F GL R F

Y:\2013\13918-13 Ultramar P1 L1 G 6 R F GL R F.dwg, 08/10/2013 10:44:57 AM, KIP 7700 MyMetric3