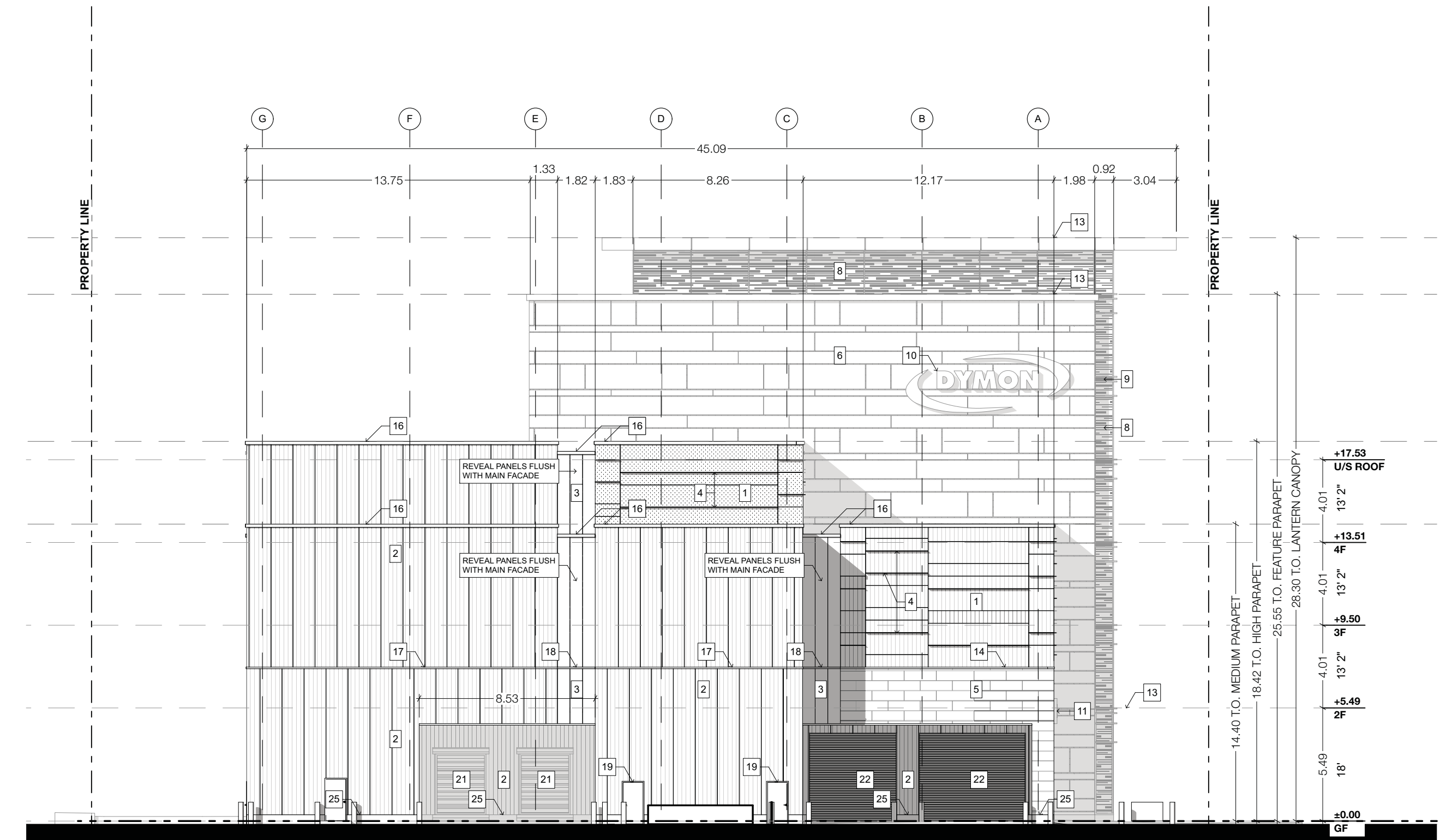


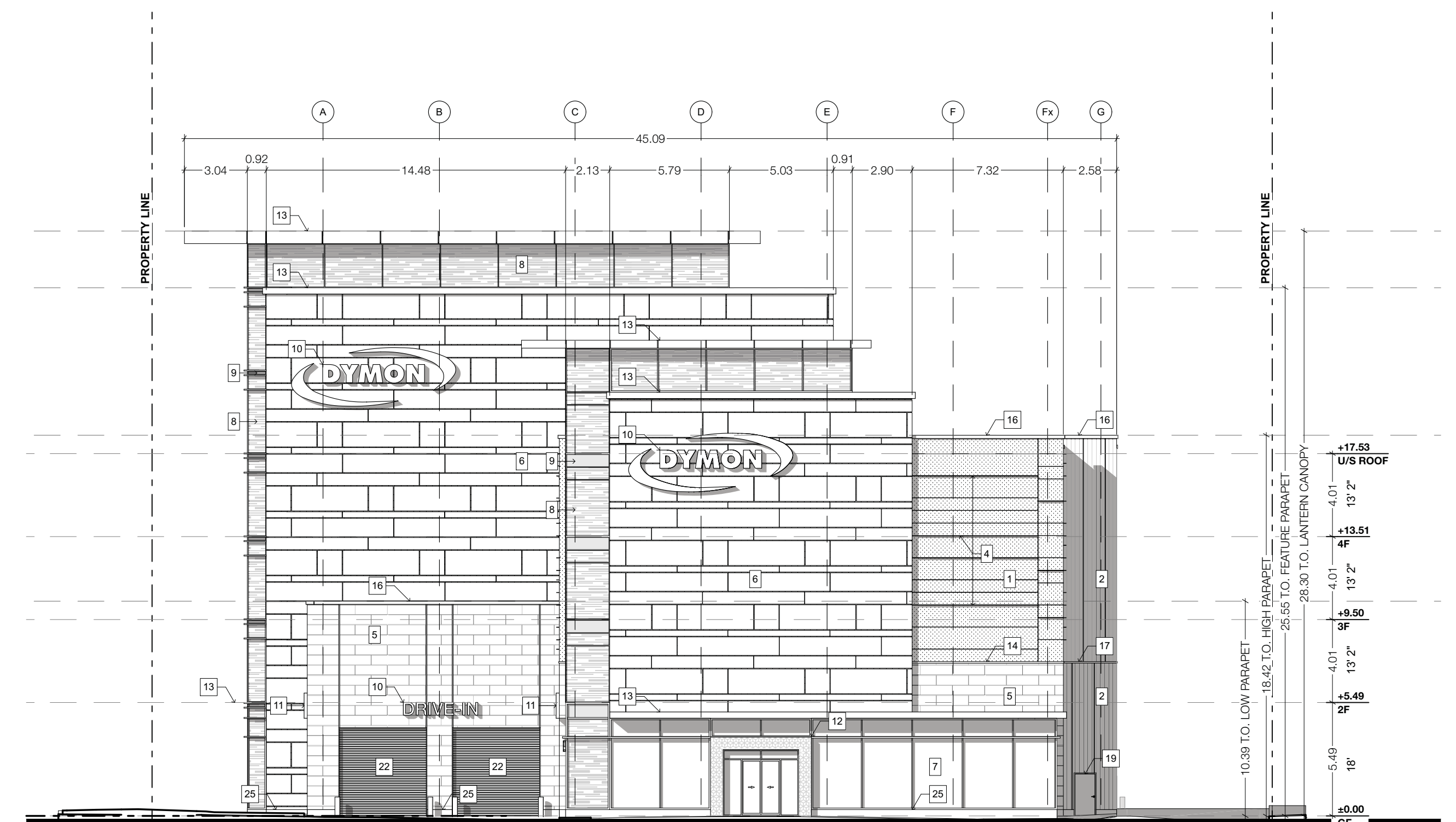
KEY PLAN  
 SCALE: 1:1500

### LEGEND

- 1 INSULATED METAL PANEL (IMP) SYSTEM - HORIZONTAL ORIENTATION - 'ARCHITECTURAL' PROFILE - COLOUR: 'WEATHERED ZINC'
- 2 INSULATED METAL PANEL (IMP) SYSTEM - VERTICAL ORIENTATION - 'LIGHT MESA' PROFILE - COLOUR: 'WEATHERED ZINC'
- 3 INSULATED METAL PANEL (IMP) SYSTEM - VERTICAL ORIENTATION (RECESSES & REVEALS) - 'LIGHT MESA' PROFILE - COLOUR: 'MEDIUM BRONZE'
- 4 KINGSPAN KARRIER FIN - STANDARD RECTANGLE FIN COLOUR: 'WEATHERED ZINC'
- 5 3 1/2" ARCHITECTURAL MASONRY UNIT - ARISCRAPT ADAIR LESTONE - FINISH: FINE DRESSED SEPA-VENED - RUNNING BOND
- 6 ALU/COL - ALUMINIUM COMPOSITE MATERIAL - FINISH: 'LIGHT WENGE' 4mm FR CORE
- 7 CURTAIN WALL GLAZING - FINISH: VISION GLASS
- 8 CURTAIN WALL GLAZING - FINISH: FRITTED WINDOW FILM ON VISION GLASS
- 9 SPANDREL PANEL - COLOUR TO MATCH IMP 'WEATHERED ZINC'
- 10 INTERNALLY LIT SIGNAGE - COLOUR: TBD
- 11 GLASS SIGNAGE BAND - COLOUR: TBD
- 12 BACK-LIT GLASS WITH FRIT PATTERN - COLOUR TO MATCH - 'BOLD BLUE' WITH WHITE FRITTING
- 13 METAL CANOPY - COLOUR TO MATCH IMP 'WEATHERED ZINC'
- 14 CONTINUOUS BENT FLASHING SILL - COLOUR TO MATCH IMP 'WEATHERED ZINC'
- 15 CONTINUOUS BENT METAL CAP - PREFINISHED - COLOUR TO MATCH IMP 'MEDIUM BRONZE'
- 16 FIRESTONE PREFINISHED METAL CAP - FINISH: 'SLATE GREY' (ALL BENT METAL CAP PARAPETS)
- 17 PREFINISHED METAL IMP STACK JOINT COVER TRIM - COLOUR TO MATCH IMP 'WEATHERED ZINC'
- 18 PREFINISHED METAL IMP STACK JOINT COVER TRIM - COLOUR TO MATCH IMP 'MEDIUM BRONZE'
- 19 INSULATED HOLLOW METAL DOOR - COLOUR TO MATCH IMP 'WEATHERED ZINC'
- 20 INSULATED HOLLOW METAL DOOR - COLOUR TO MATCH ARCHITECTURAL MASONRY UNIT 'ADAIR LESTONE'
- 21 INSULATED HOLLOW METAL DOOR - COLOUR TO MATCH VERTICAL IMP 'MEDIUM BRONZE'
- 22 HIGH SPEED ROLL-UP O/H DOOR - FINISH: STEEL FRAME WITH POLYCARBONATE VISION SLATS
- 23 INSULATED O/H DOOR - COLOUR TO MATCH IMP 'WEATHERED ZINC'
- 24 INSULATED O/H DOOR - COLOUR TO MATCH IMP 'MEDIUM BRONZE'
- 25 POURED CONCRETE
- 26 PREFINISHED METAL CAP - BROWN COLOUR TO BEST MATCH ACM WOOD PATTERN 'LIGHT WENGE'



NORTH ELEVATION



SOUTH ELEVATION



Note: Building permit issuance shall be subject to the building permit drawings not being in contravention with these approved plans and drawings including, but not limited to, the exterior design of the building and exterior building materials.

Note: This drawing and all copyright therein are the sole and exclusive property of TACT Architecture Inc. Reproduction or use of this drawing in whole or in part by any means or in any way whatsoever without the prior written consent of TACT Architecture Inc. is strictly prohibited. Do not scale this drawing. Published Tuesday, December 15, 2020. file: 1611-27 Ottawa - 3455 Hawthorne Rd v.06.1 Elevations revisions.pin

design architect  
**TACT Architecture Inc.**  
 660H College Street (Rear Lane)  
 Toronto, Ontario M6G 1B8  
 416-516-1849  
 www.tactarchitecture.com

architect of record  
**nicholas caragannis architect**  
 137 Beville Street  
 Ottawa, ON K1S 2P2  
 613-237-8821  
 613-237-8859  
 www.nicholascaragannis.com

job title  
**Dymon Storage**  
 3455 Hawthorne Road  
 Ottawa, Ontario

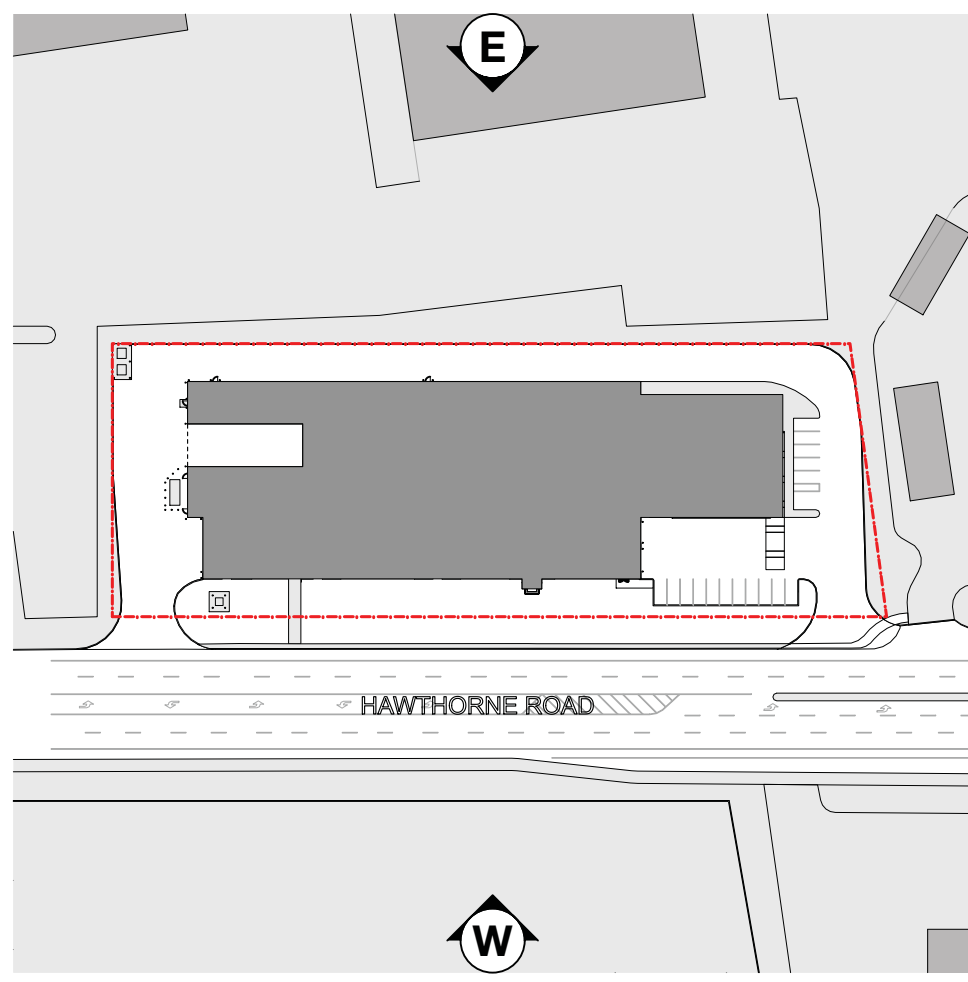
client  
**Dymon Capital Corporation**  
 city file number

sheet title  
**North & South Elevations**

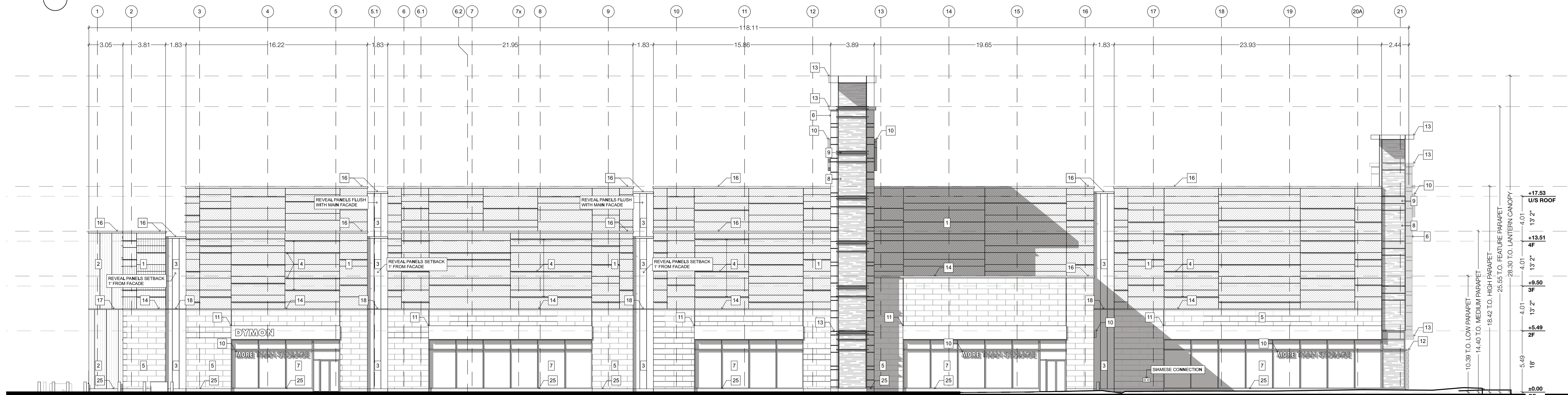
drawn by **ST** checked by **PJ**

issue date  
**Tuesday, December 15, 2020**

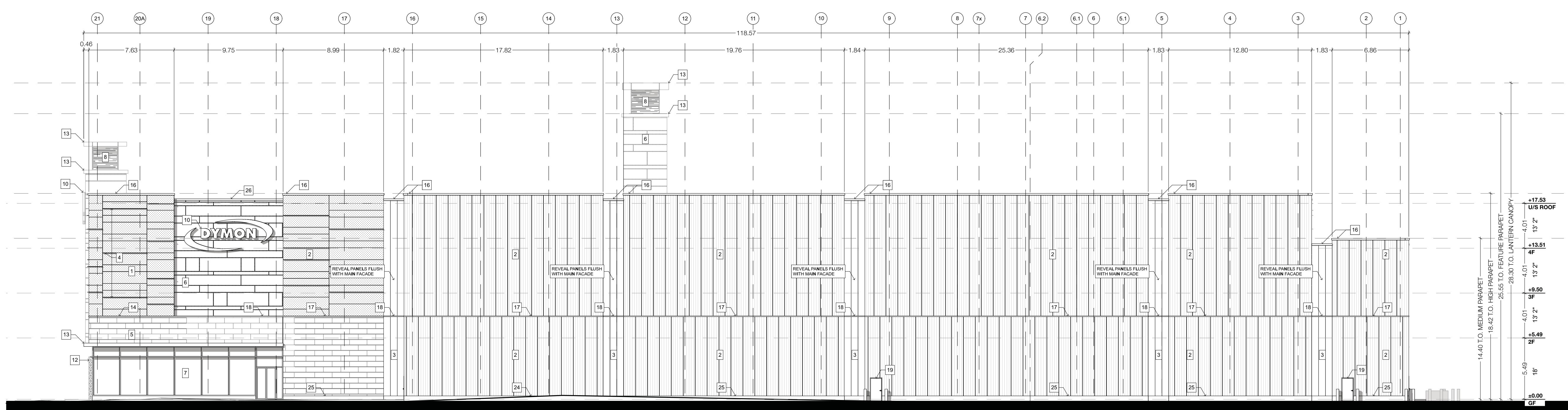
scale **1:200** job number **1611-27**



KEY PLAN  
 SCALE: 1:1500



WEST ELEVATION



EAST ELEVATION

- LEGEND**
- 1 INSULATED METAL PANEL (IMP) SYSTEM - HORIZONTAL ORIENTATION - 'ARCHITECTURAL' PROFILE - COLOUR: 'WEATHERED ZINC'
  - 2 INSULATED METAL PANEL (IMP) SYSTEM - VERTICAL ORIENTATION - 'LIGHT MESA' PROFILE - COLOUR: 'WEATHERED ZINC'
  - 3 INSULATED METAL PANEL (IMP) SYSTEM - VERTICAL ORIENTATION (RECESSES & REVEALS) - 'LIGHT MESA' PROFILE - COLOUR: 'MEDIUM BRONZE'
  - 4 KINGSPAN KARRIER FIN - STANDARD RECTANGLE FIN COLOUR: 'WEATHERED ZINC'
  - 5 3 1/2" ARCHITECTURAL MASONRY UNIT - ARISORAF ADAIR LIMESTONE - FINISH: FINE DRESSED SEPA-VENED - RUNNING BOND
  - 6 ALUOOL - ALUMINUM COMPOSITE MATERIAL - FINISH: 'LIGHT WEDGE' 4mm FR CORE
  - 7 CURTAIN WALL GLAZING - FINISH: VISION GLASS
  - 8 CURTAIN WALL GLAZING - FINISH: FRITTED WINDOW FILM ON VISION GLASS
  - 9 SPANDREL PANEL - COLOUR TO MATCH IMP 'WEATHERED ZINC'
  - 10 INTERNALLY LIT SIGNAGE - COLOUR: TBD
  - 11 GLASS SIGNAGE BAND - COLOUR: TBD
  - 12 BACK-LIT GLASS WITH FRIT PATTERN - COLOUR TO MATCH - 'BOLD BLUE' WITH WHITE FRITTING
  - 13 METAL CANOPY - COLOUR TO MATCH IMP 'WEATHERED ZINC'
  - 14 CONTINUOUS BENT FLASHING SILL - COLOUR TO MATCH IMP 'WEATHERED ZINC'
  - 15 CONTINUOUS BENT METAL CAP - PREFINISHED - COLOUR TO MATCH IMP 'MEDIUM BRONZE'
  - 16 FIRESTONE PREFINISHED METAL CAP - FINISH: 'SLATE GREY' (ALL BENT METAL CAP PARAPETS)
  - 17 PREFINISHED METAL IMP STACK JOINT COVER TRIM - COLOUR TO MATCH IMP 'WEATHERED ZINC'
  - 18 PREFINISHED METAL IMP STACK JOINT COVER TRIM - COLOUR TO MATCH IMP 'MEDIUM BRONZE'
  - 19 INSULATED HOLLOW METAL DOOR - COLOUR TO MATCH IMP 'WEATHERED ZINC'
  - 20 INSULATED HOLLOW METAL DOOR - COLOUR TO MATCH ARCHITECTURAL MASONRY UNIT 'ADAIR LIMESTONE'
  - 21 INSULATED HOLLOW METAL DOOR - COLOUR TO MATCH VERTICAL IMP 'MEDIUM BRONZE'
  - 22 HIGH SPEED ROLL-UP O/H DOOR - FINISH: STEEL FRAME WITH POLYCARBONATE VISION SLATS
  - 23 INSULATED O/H DOOR - COLOUR TO MATCH IMP 'WEATHERED ZINC'
  - 24 INSULATED O/H DOOR - COLOUR TO MATCH IMP 'MEDIUM BRONZE'
  - 25 POURED CONCRETE
  - 26 PREFINISHED METAL CAP - BROWN COLOUR TO BEST MATCH ACM WOOD PATTERN 'LIGHT WEDGE'



**Note:** Building permit issuance shall be subject to the building permit drawings not being in contravention with these approved plans and drawings including, but not limited to, the exterior design of the building and exterior building materials.

**Note:** This drawing and all copyright therein are the sole and exclusive property of TACT Architecture Inc. Reproduction or use of this drawing in whole or in part by any means or in any way whatsoever without the prior written consent of TACT Architecture Inc. is strictly prohibited. Do not scale this drawing. Published Tuesday, December 15, 2020. file: 1611-27 Ottawa - 3455 Hawthorne Rd v.06.1 Elevations revisions pin

design architect  
**TACT Architecture Inc.**  
 660H College Street (Rear Lane)  
 Ottawa, Ontario M6G 1B8  
 416-516-1949  
 www.tactarchitecture.com

architect of record  
**nicholas caraganis architect**  
 137 Bankville Street  
 Ottawa, ON K1S 3P3  
 416-237-8801  
 416-237-8859  
 www.nicholascaraganis.com

job title  
**Dymon Storage**  
 3455 Hawthorne Road  
 Ottawa, Ontario

client  
**Dymon Capital Corporation**

city file number

sheet title  
**West & East Elevations**

drawn by **ST** checked by **PJ**

issue date  
**Tuesday, December 15, 2020**

scale **1:200** job number **1611-27**