

1 NORTH ELEVATION
SCALE: 1: 125

SCUPPER LEGEND:

SCUPPER AT 4TH FLOOR ROOF	SEE	3	AS11
SCUPPER AT 2ND FLOOR ROOF	SEE	2	AS12
OVERFLOW SCUPPER AT 4TH FLOOR ROOF	SEE	4	AS11
OVERFLOW SCUPPER AT 3RD FLOOR ROOF	SEE	1	AS10

ELEVATION LEGEND

1	PRE-MANUFACTURED INSULATED METAL PANEL SYSTEM, HORIZONTAL ORIENTATION, KINGSPAN MINI MICRO-RIB PROFILE, COLOUR: PEWTER
1A	PRE-MANUFACTURED INSULATED METAL PANEL SYSTEM, HORIZONTAL ORIENTATION, KINGSPAN MINERAL FIBRE MINI MICRO-RIB PROFILE, COLOUR: PEWTER
2	PRE-MANUFACTURED INSULATED METAL PANEL SYSTEM, VERTICAL ORIENTATION, KINGSPAN TUBESIDE SHADOWLINE PROFILE, COLOUR: PEWTER
3	PRE-MANUFACTURED INSULATED METAL PANEL SYSTEM, VERTICAL ORIENTATION, KINGSPAN TUBESIDE SHADOWLINE PROFILE, COLOUR: DARK BRONZE
3A	PRE-MANUFACTURED INSULATED METAL PANEL SYSTEM, VERTICAL ORIENTATION, KINGSPAN MINERAL FIBRE SHADOWLINE PROFILE, COLOUR: DARK BRONZE
3B	PRE-MANUFACTURED INSULATED METAL PANEL SYSTEM, VERTICAL ORIENTATION, KINGSPAN MINERAL FIBRE SHADOWLINE PROFILE, COLOUR: PEWTER
4	KINGSPAN ACCENT FIN SHAPE, BLADE EXTRUSION (F) COLOUR: PEWTER
5	PRE-FINISHED METAL FLASHING JOINT
6	TYPICAL IMP JOINT, REVEALS AS PER MANUFACTURER'S RECOMMENDATIONS
7	12" VERTICAL REVEAL JOINT FACTORY FOLDED (CW TRIMLESS ENDS AND RECESSED FLASHER GASKET) IN IMP SYSTEM, INSTALL REVEALS AS PER MANUFACTURER'S RECOMMENDATIONS, REFER TO DETAIL 8/AS01
8	POURED CONCRETE
9	(11.587) x (23.557) x (3.557) ARRISCRAFT ADAR LIMESTONE ARCHITECTURAL MASONRY UNIT, PATTERN: SEVEN SIDES, FINISH: FINE CROSSED RUNNING BOND (REFER TO SPECIFICATIONS)
10	BACKLIT GLASS WITH REIT PATTERN, COLOUR TO MATCH BOULDER BLUE WITH WHITE FRITTING BY SIGNAGE
11	MASONRY EXPANSION JOINT ROPED AND CAULKED, TYPICAL COLOUR TO MATCH MASONRY MORTAR
12	INSULATED HOLLOW METAL DOOR, REFER TO SPECIFICATIONS & DOOR SCHEDULE, COLOUR TO MATCH ADJACENT EXTERIOR FINISH
12A	HOLLOW METAL DOOR, REFER TO SPECIFICATIONS & DOOR SCHEDULE, COLOUR TO MATCH ADJACENT EXTERIOR FINISH
13	FULL VISION HIGH SPEED ROLL-UP OVERHEAD DOOR CW MOTOR, TRACK AND HARDWARE, SEE SPECIFICATIONS
14	INSULATED HOLLOW METAL DOOR, REFER TO SPECIFICATIONS & DOOR SCHEDULE, COLOUR TO MATCH ADJACENT EXTERIOR FINISH: ARCHITECTURAL MASONRY UNIT DARK LIMESTONE
14A	INSULATED HOLLOW METAL DOOR, REFER TO SPECIFICATIONS & DOOR SCHEDULE, COLOUR TO MATCH ADJACENT EXTERIOR FINISH: IMP PEWTER
15	INSULATED OVERHEAD DOOR COMPLETE WITH TRACK & HARDWARE (REFER TO SPECIFICATIONS), COLOUR: PEWTER
16	CURTAIN WALL GLAZING IN THERMALLY BROKEN ANODIZED ALUMINUM STOREFRONT FRAMING SYSTEM, FRAME COLOUR AND PROFILE TO BE: EXTERIOR: PEWTER, INTERIOR: CLEAR ANODIZED
17	SECURITY CAMERA SUPPLIED AND INSTALLED BY DYMON
18	INTERNALLY LIT SIGNAGE BY SIGN SUPPLIER, PROVIDE POWER SUPPLY AND 3/4" THICK EXTERIOR GRADE PLYWOOD FOR SIGNAGE MOUNTING, G.C. TO PROVIDE SHOP DRAWINGS, REFER TO DETAILS FOR SIGNAGE INSTALLATION, COLOUR: TBC
18A	INTERNALLY LIT SIGNAGE BY SIGN SUPPLIER, PROVIDE POWER, G.C. TO PROVIDE SHOP DRAWINGS, REFER TO DETAILS FOR SIGNAGE INSTALLATION TO BE CONFIRMED BY OWNER AND SIGNAGE SUPPLIER.
19	PRE-FINISHED METAL CANOPY ALUMINUM COMPOSITE MATERIAL, ALICOL LARSON FINISH PEWTER, GAUGE: TBC, REFER TO SECTION DETAILS 1 & 3 / DWG A-516, 1.34(DWG A-517) AND 142(DWG A-518)
20	ANODIZED ALUMINUM WINDOW SILL TO MATCH CURTAIN WALL BY WINDOW SUPPLIER
21	SPANDREL GLAZING CW INSULATED BACK PANEL, COLOUR TO MATCH IMP PEWTER
22	DOOR SEAL, SEE SPECIFICATIONS
23	PRE-FINISHED CONTINUOUS METAL SCUPPER, REFER TO PLANS AND DETAILS
23A	PRE-FINISHED METAL SCUPPER THROUGH THE WALL, REFER TO PLANS AND DETAILS
24	CONTINUOUS BENT METAL CAP, 22 GA. PRE-FINISHED METAL CW HIDDEN FASTENERS, COLOUR: PEWTER, REFER TO SECTIONS AND DETAILS
25	PRE-FINISHED METAL FLASHING CW DRIP EDGE, PAINT COLOUR: PEWTER TO MATCH ADJACENT IMP, REFER TO DETAIL 34/35
26	HOT DIPPED GALVANIZED BENT STEEL PLATE AROUND 3 SIDES OF DRIPPING CW PRE-FINISHED METAL FLASHING, COLOUR: PEWTER, REFER TO SECTIONS AND DETAILS
27	5" DIAM. COMBUSTION AIR INTAKE CW VENT CAP (RADIANT HEATERS), COLOUR TO MATCH WALL FINISH, SEE MECHANICAL
28	6" DIAMETER CONCRETE FILLED STEEL PROTECTION BOLLARD, 54" HIGH ABOVE GRADE
29	SMI/SEE CONNECTION REFER TO IABE, MAX 900mm, MIN 300mm ABOVE GRADE
30	HOT DIPPED GALVANIZED STEEL GUARDRAIL AT LOADING RAMP
31	HOT DIPPED GALVANIZED STEEL WALL PROTECTION, PAINTED YELLOW
32	MECHANICAL COVER, PRE-FINISHED METAL, COLOUR TO MATCH WALL FINISH, REFER TO MECHANICAL
33	PRE-FINISHED METAL PARAPET CAP, 22GA. ALUMINUM COMPOSITE MATERIAL, ALICOL LARSON FINISH PEWTER, REFER TO ANGLE/EE SECTION DETAILS
33A	ALUMINUM COMPOSITE MATERIAL, CW CONTINUOUS BENT METAL CAP, 22GA. PRE-FINISHED METAL SOFFIT, ALICOL LARSON FINISH PEWTER
34	EXTERIOR WALL PAK LIGHT, CENTERED ON EXIT (IF APPLICABLE), REFER TO ELEC. DWGS
35	PRE-FINISHED METAL IMP STACK JOINT COVER TRIM, COLOUR TO MATCH IMP
36	PRE-FINISHED INSULATED METAL SYSTEM CW CONTINUOUS BENT METAL CAP, 22GA. PRE-FINISHED METAL SOFFIT AT LOADING AREA AND AT EXIT STAR RECESSED DOOR, COLOUR TO MATCH ADJACENT IMP FINISH
37	TRAFFIC LIGHTS, REFER TO ELECTRICAL & SPECIFICATIONS
38	ALUMINUM COMPOSITE MATERIAL, CW 4mm FIRE RESISTANT CORE, ALICOL LARSON FINISH LIGHT FINISH, INSTALLED ON PRE-MANUFACTURED INSULATED METAL PANEL "KARRIER" SYSTEM, KARRIER PANEL, COLOUR: WHITE
39	TYP. 1" VERTICAL REVEAL JOINT CW ACM FILLER PLATE, COLOUR: PEWTER, INSTALL REVEALS PER MANUF. RECOMMENDATIONS
40	TYP. 1/2" HORIZONTAL REVEAL JOINT CW ACM FILLER PLATE, COLOUR: CHARCOAL, INSTALL REVEALS PER MANUF. RECOMMENDATIONS, REFER TO DETAIL 10A/11
41	PROVIDE LIGHTING FIXTURES AND REQUIRED POWER CONNECTION INSIDE LANTERN AT ROOF EOOD LEVEL, REFER TO ROOF PLAN AND ELECTRICAL
42	RADIANT HEATER VENT PIPING CW NON-COMBUSTIBLE SLEEVE, COLOUR TO MATCH ADJACENT WALL FINISH, SEE MECHANICAL

GENERAL NOTES

- DO NOT SCALE DRAWINGS, ONLY FIGURED DIMENSIONS ARE TO BE USED, WHERE DOUBT EXISTS, FILE REQUEST FOR INTERPRETATION AND REQUEST CLARITY.
- IT IS THE RESPONSIBILITY OF THE GENERAL CONTRACTOR TO VERIFY DIMENSIONS ON SITE, REPORT DISCREPANCIES TO THE ARCHITECT PROMPTLY.
- GENERAL CONTRACTOR TO TAKE INTO ACCOUNT CONSTRUCTION TOLERANCE, GENERAL CONTRACTOR TO COORDINATE THE WORK OF DIFFERENT TRADES TO COMPLY WITH DESIGN INTENT.
- ALL WORK DESCRIBED IN THESE DRAWINGS AND SPECIFICATIONS ARE TO COMPLY WITH THE CURRENT EDITION OF THE ONTARIO BUILDING CODE (2010) INCLUDING MOST RECENT AMENDMENTS.
- DRAWINGS AND SPECIFICATIONS ARE COMPLEMENTARY AND ARE TO BE READ TOGETHER.

COPYRIGHT

THIS DRAWING IS AN INSTRUMENT OF SERVICE AND IS PROTECTED BY COPYRIGHT AND IS THE SOLE PROPERTY OF ARCHITECTS DCA INC. COPIES, INCLUDING ELECTRONIC COPIES, MAY ONLY BE USED FOR THE PURPOSE INTENDED, FOR THE SINGLE PROJECT FOR WHICH THEY ARE ISSUED, AND MAY NOT BE OFFERED FOR SALE OR TRANSFER WITHOUT THE EXPRESS WRITTEN PERMISSION OF THE ARCHITECT.



ISSUE RECORD

NO.	DESCRIPTION	DATE
1	90% REVIEW	2022-07-22
2	ISSUED FOR FINAL TENDER REVIEW	2022-08-12
3	ISSUED FOR CONSTRUCTION	2022-08-16
4	ISSUED FOR PERMIT	2022-08-24
5	RE-ISSUE FOR CONSTRUCTION	2202-09-08

CLIENT

DYMON SELF-STORAGE
2-1830 WALKLEY ROAD, OTTAWA, ON
(T) 613-247-0888

CONSULTANTS

FOTENI PLANNING + DESIGN
223 MCLEOD STREET, OTTAWA ON
PLANNING & URBAN DESIGN
(T) 613-730-5709

D B GRAY ENGINEERING INC.
700 LONG POINT CIR, GLOUCESTER, ON.
CIVIL ENGINEER
(T) 613-425-8044

TACT ARCHITECTURE INC.
660R COLLEGE STREET (REAR LANE) TORONTO ON.
DESIGN ARCHITECT
(T) 416-516-1949

BRUMER ENGINEERING SERVICES LTD
25-120 WEST BEAVER CREEK ROAD, RICHMOND HILL ON
MECHANICAL CONSULTANTS
(T) 905-771-7798

HUDSON ENGINEERING
2901 STEELES AVE W UNIT 26, TORONTO, ON
ELECTRICAL CONSULTANTS
(T) 416-663-5470

D+M STRUCTURAL LTD.
110-333 PRESTON ST. OTTAWA, ON
STRUCTURAL CONSULTANTS
(T) 613 651-9490



A GROUP OF ARCHITECTS
201-1339 WELLINGTON ST. W. OTTAWA ON K1Y 3B8
WWW.ARCHITECTSDCA.COM 613.725.2294

PROJECT TITLE
DYMON 3455 HAWTHORNE

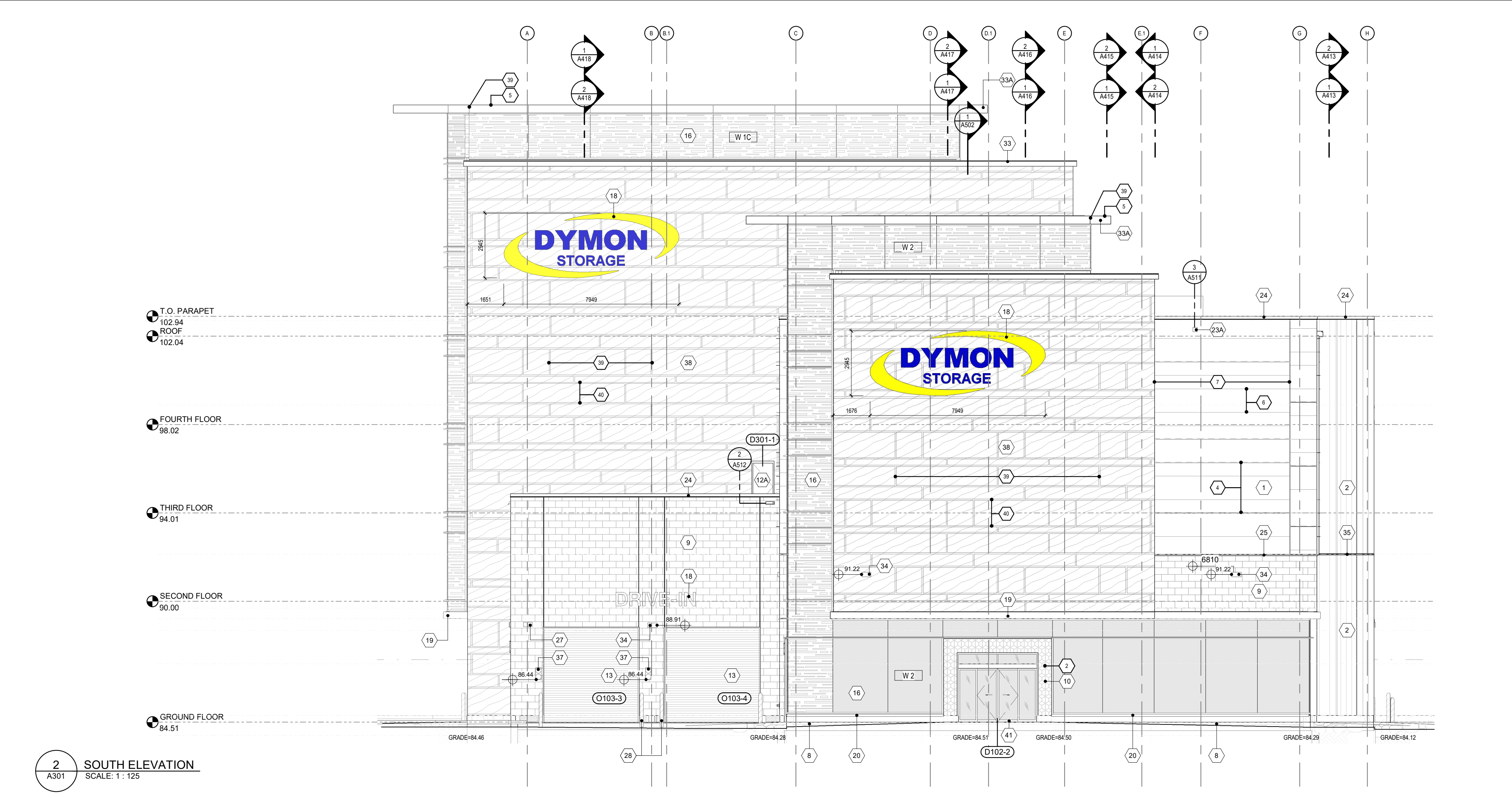
DRAWING TITLE
NORTH & SOUTH ELEVATIONS

DATE	DRAWN	JOB NO.	DRAWING NO.
AUG 2022	Author	3467	A301
SCALE	REVIEWED		
As indicated	Checker		

ARCHITECTURAL

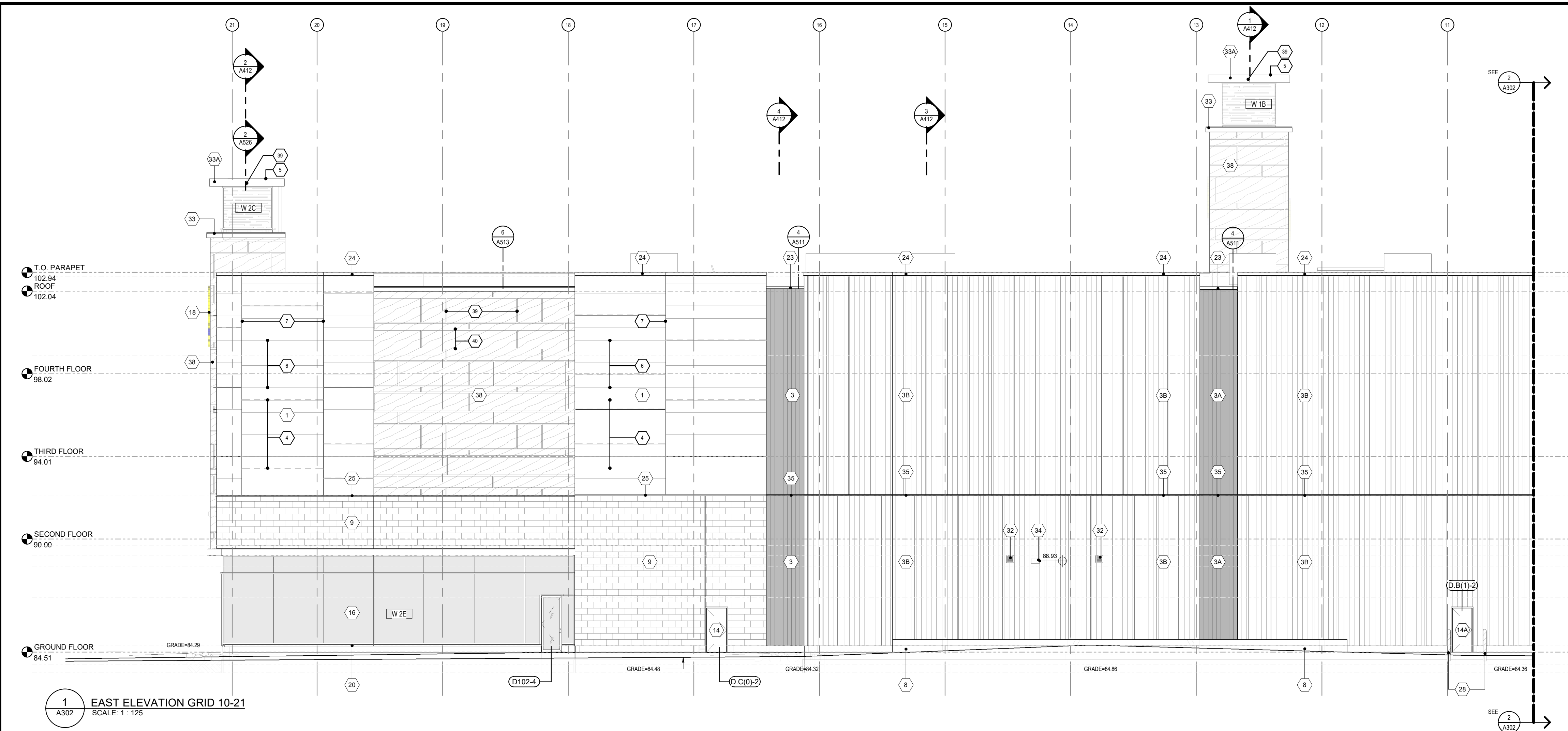
APPROVED
By Lily Xu at 5:47 pm, Sep 12, 2022

LILY XU, MCIP, RPP
MANAGER, DEVELOPMENT REVIEW SOUTH
PLANNING, INFRASTRUCTURE & ECONOMIC
DEVELOPMENT DEPARTMENT, CITY OF OTTAWA



2 SOUTH ELEVATION
SCALE: 1: 125

D07-12-20-01-01



1 EAST ELEVATION GRID 10-21
SCALE: 1:125

SCUPPER LEGEND:

SCUPPER AT 4TH FLOOR ROOF	SEE	3	A311
SCUPPER AT 2ND FLOOR ROOF	SEE	2	A312
OVERFLOW SCUPPER AT 4TH FLOOR ROOF	SEE	4	A311
OVERFLOW SCUPPER AT 3RD FLOOR ROOF	SEE	1	A310

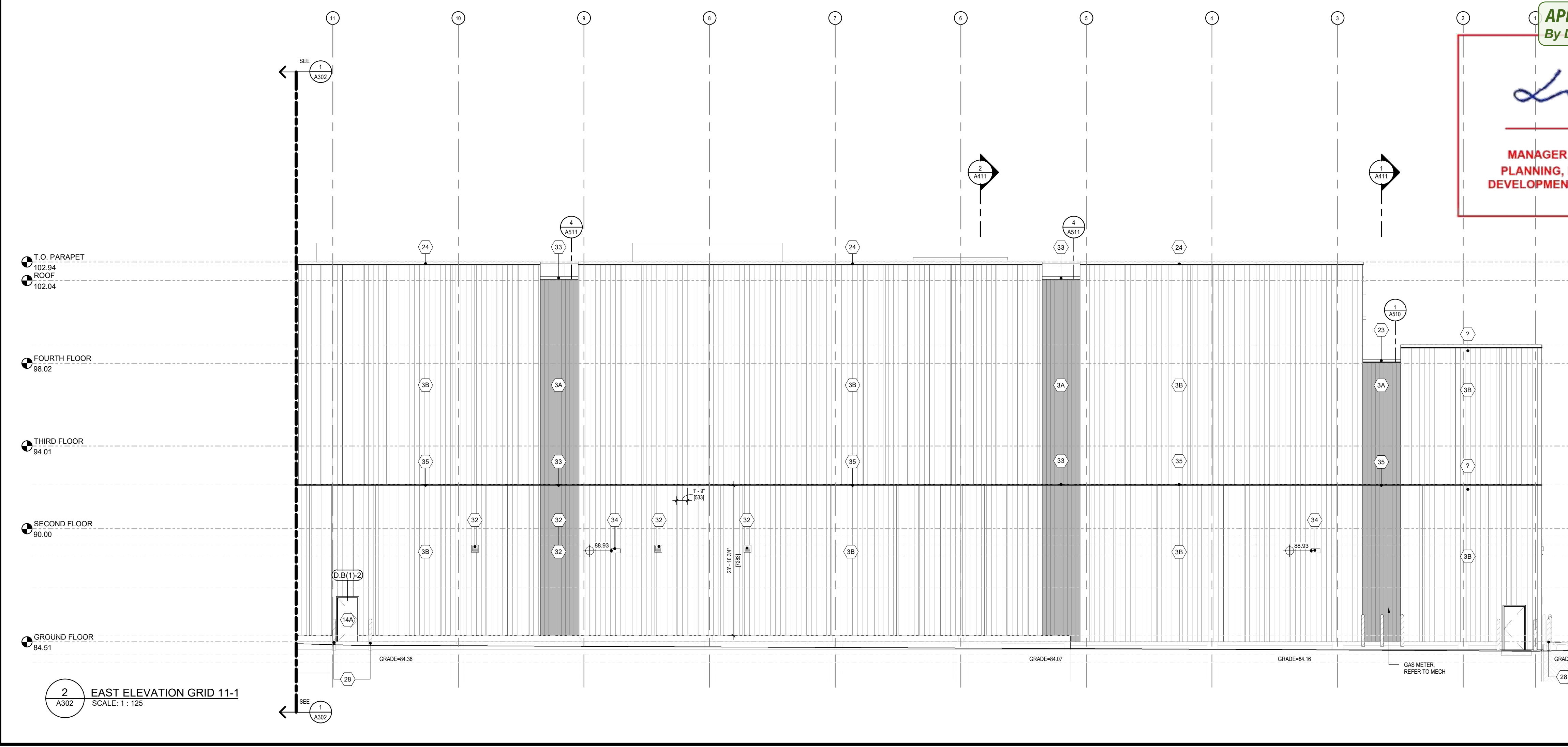
ELEVATION LEGEND

1	PRE-MANUFACTURED INSULATED METAL PANEL SYSTEM, HORIZONTAL ORIENTATION, KINGSPIAN MINOR RIB PROFILE, COLOUR: PEWTER
1A	PRE-MANUFACTURED INSULATED METAL PANEL SYSTEM, HORIZONTAL ORIENTATION, KINGSPIAN MINOR RIB PROFILE, COLOUR: PEWTER
2	PRE-MANUFACTURED INSULATED METAL PANEL SYSTEM, VERTICAL ORIENTATION, KINGSPIAN TUBESIDE SHADOWLINE PROFILE, COLOUR: DARK BRONZE
3	PRE-MANUFACTURED INSULATED METAL PANEL SYSTEM, VERTICAL ORIENTATION, KINGSPIAN TUBESIDE SHADOWLINE PROFILE, COLOUR: DARK BRONZE
3A	PRE-MANUFACTURED INSULATED METAL PANEL SYSTEM, VERTICAL ORIENTATION, KINGSPIAN TUBESIDE SHADOWLINE PROFILE, COLOUR: DARK BRONZE
3B	PRE-MANUFACTURED INSULATED METAL PANEL SYSTEM, VERTICAL ORIENTATION, KINGSPIAN TUBESIDE SHADOWLINE PROFILE, COLOUR: PEWTER
4	KINGSPIAN ACCENT FIN SHAPED BLADE EXTRUSION (F) COLOUR: PEWTER
5	PRE-FINISHED METAL FLASHING JOINT
6	TYPICAL IMP JOINT, REVEALS AS PER MANUFACTURER'S RECOMMENDATIONS
7	12" VERTICAL REVEAL JOINT FACTORY FOLDED (CW TRIMLESS ENDS AND RECESSED RUBBER GASKET IN IMP SYSTEM), INSTALL REVEALS AS PER MANUFACTURER'S RECOMMENDATIONS. REFER TO DETAIL 8 / A301
8	POURED CONCRETE
9	(11'-5 1/2" x 23'-5 1/2" x 13'-5 1/2") ARRSBOROUGH ADAR LIMESTONE ARCHITECTURAL MASONRY UNIT, PATTERNS: SEVEN SIDES, FINISH: FINE CROSSED RUNNING BOND (REFER TO SPECIFICATIONS)
10	BACKLIT GLASS WITH REIT PATTERN, COLOUR: TO MATCH BOSS BLUE WITH WHITE FRITTING BY SIGNAGE
11	MASONRY EXPANSION JOINT ROPED AND CAULKED, TYPICAL COLOUR TO MATCH MASONRY MORTAR
12	INSULATED HOLLOW METAL DOOR, REFER TO SPECIFICATIONS & DOOR SCHEDULE, COLOUR TO MATCH ADJACENT EXTERIOR FINISH
12A	HOLLOW METAL DOOR, REFER TO SPECIFICATIONS & DOOR SCHEDULE, COLOUR TO MATCH ADJACENT EXTERIOR FINISH
13	FULL VISION HIGH SPEED ROLL-UP OVERHEAD DOOR CW MOTOR, TRACK AND HARDWARE, SEE SPECIFICATIONS
14	INSULATED HOLLOW METAL DOOR, REFER TO SPECIFICATIONS & DOOR SCHEDULE, COLOUR TO MATCH ADJACENT EXTERIOR FINISH, ARCHITECTURAL MASONRY SET ADAR LIMESTONE
14A	INSULATED HOLLOW METAL DOOR, REFER TO SPECIFICATIONS & DOOR SCHEDULE, COLOUR TO MATCH ADJACENT EXTERIOR FINISH, IMP PEWTER
15	INSULATED OVERHEAD DOOR COMPLETE WITH TRACK & HARDWARE (REFER TO SPECIFICATIONS), COLOUR: PEWTER
16	CURTAIN WALL GLAZING IN THERMALLY BROKEN ANODIZED ALUMINUM STOREFRONT FINISH SYSTEM, FRAME COLOUR AND PROFILE TO BE: EXTERIOR: PEWTER, INTERIOR: CLEAR ANODIZED
17	SECURITY CAMERA SUPPLIED AND INSTALLED BY DYMON
18	INTERNALLY LIT SIGNAGE BY SIGN SUPPLIER, PROVIDE POWER SUPPLY AND 3/4" THICK EXTERIOR GRADE PLYWOOD FOR SIGNAGE MOUNTING, G.C. TO PROVIDE SHOP DRAWINGS, REFER TO DETAILS FOR SIGNAGE INSTALLATION, COLOUR TBC
18A	INTERNALLY LIT SIGNAGE BY SIGN SUPPLIER, PROVIDE POWER, G.C. TO PROVIDE SHOP DRAWINGS, REFER TO DETAILS FOR SIGNAGE INSTALLATION TO BE CONFIRMED BY OWNER AND SIGNAGE SUPPLIER
19	PRE-FINISHED METAL CANOPY ALUMINUM COMPOSITE MATERIAL, ALICOL LARSON FINISH, PEWTER, GAUGE: TBC, REFER TO SECTION DETAILS 1 & 3 / DWG A-516, 1.34(DWG A-517) AND 142(DWG A-518)
20	ANODIZED ALUMINUM WINDOW SILL TO MATCH CURTAIN WALL BY WINDOW SUPPLIER
21	SPANDREL GLAZING CW INSULATED BACK PANEL, COLOUR TO MATCH IMP PEWTER
22	DOOR SEAL, SEE SPECIFICATIONS
23	PRE-FINISHED CONTINUOUS METAL SCUPPER, REFER TO PLANS AND DETAILS
23A	PRE-FINISHED METAL SCUPPER THROUGH THE WALL, REFER TO PLANS AND DETAILS
24	CONTINUOUS BENT METAL CAP, 22 GA. PRE-FINISHED METAL CW HIDDEN FASTENERS, COLOUR: PEWTER, REFER TO SECTIONS AND DETAILS
25	PRE-FINISHED METAL FLASHING CW DRIP EDGE, PAINT COLOUR: PEWTER TO MATCH ADJACENT IMP, REFER TO DETAIL 34/35
26	HOT DIPPED GALVANIZED BENT STEEL PLATE AROUND 3 SIDES OF DRIPPING CW PRE-FINISHED METAL FLASHING, COLOUR: PEWTER, REFER TO SECTIONS AND DETAILS
27	5" DIA. COMBUSTION AIR INTAKE CW VENT CAP (RADIANT HEATERS), COLOUR TO MATCH WALL FINISH, SEE MECHANICAL
28	6" DIAMETER CONCRETE FILLED STEEL PROTECTION BOLLARD, 54" HIGH ABOVE GRADE
29	SMIESTE CONNECTION REFER TO IABE, MAX 900mm, MIN 300mm ABOVE GRADE
30	HOT DIPPED GALVANIZED STEEL GUARDRAIL AT LOADING RAMP
31	HOT DIPPED GALVANIZED STEEL WALL PROTECTION, PAINTED YELLOW
32	MECHANICAL COVER, PRE-FINISHED METAL, COLOUR TO MATCH WALL FINISH, REFER TO MECHANICAL
33	PRE-FINISHED METAL PARAPET CAP, 22GA. ALUMINUM COMPOSITE MATERIAL, ALICOL LARSON FINISH, PEWTER, REFER TO MANUFACTURER SECTION DETAILS
33A	ALUMINUM COMPOSITE MATERIAL, CW CONTINUOUS BENT METAL CAP, 22GA. PRE-FINISHED VENTED METAL SOFFIT, ALICOL LARSON FINISH, PEWTER
34	EXTERIOR WALL PAK LIGHT, CENTERED ON EXIT (IF APPLICABLE), REFER TO ELEC. DWGS
35	PRE-FINISHED METAL IMP STACK JOINT COVER TRIM, COLOUR TO MATCH IMP
36	PRE-FINISHED INSULATED METAL SYSTEM, CW CONTINUOUS BENT METAL CAP, 22GA. PRE-FINISHED VENTED METAL SOFFIT AT LOADING AREA AND AT EXT STAR RECESSED DOOR, COLOUR TO MATCH ADJACENT IMP FINISH
37	TRAFFIC LIGHTS, REFER TO ELECTRICAL & SPECIFICATIONS
38	ALUMINUM COMPOSITE MATERIAL, CW 4mm FIRE RESISTANT CORE, ALICOL LARSON FINISH, LIGHT FINISH, INSTALL ON PRE-MANUFACTURED INSULATED METAL PANEL, "KARRIER" SYSTEM, KARRIER PANEL, COLOUR: WHITE
39	TYP. 1" VERTICAL REVEAL JOINT CW ACM FILLER PLATE, COLOUR: CHARCOAL, INSTALL REVEALS PER MANUF. RECOMMENDATIONS
40	TYP. 1-1/2" HORIZONTAL REVEAL JOINT CW ACM FILLER PLATE, COLOUR: CHARCOAL, INSTALL REVEALS PER MANUF. RECOMMENDATIONS, REFER TO DETAIL 10A/11
41	PROVIDE LIGHTING FIXTURES AND REQUIRED POWER CONNECTION INSIDE LANTERN AT ROOF EOOD LEVEL, REFER TO ROOF PLAN AND ELECTRICAL
42	RADIANT HEATER VENT PIPING CW NON-COMBUSTIBLE SLEEVE, COLOUR TO MATCH ADJACENT WALL FINISH, SEE MECHANICAL

APPROVED
By Lily Xu at 10:22 am, Sep 13, 2022



LILY XU, MCIP, RPP
MANAGER, DEVELOPMENT REVIEW SOUTH
PLANNING, INFRASTRUCTURE & ECONOMIC
DEVELOPMENT DEPARTMENT, CITY OF OTTAWA



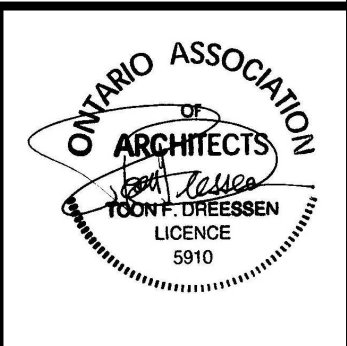
2 EAST ELEVATION GRID 11-1
SCALE: 1:125

GENERAL NOTES

- DO NOT SCALE DRAWINGS, ONLY FIGURED DIMENSIONS ARE TO BE USED, WHERE DOUBT EXISTS, FILE REQUEST FOR INTERPRETATION AND REQUEST CLARITY.
- IT IS THE RESPONSIBILITY OF THE GENERAL CONTRACTOR TO VERIFY DIMENSIONS ON SITE, REPORT DISCREPANCIES TO THE ARCHITECT PROMPTLY.
- GENERAL CONTRACTOR TO TAKE INTO ACCOUNT CONSTRUCTION TOLERANCE, GENERAL CONTRACTOR TO COORDINATE THE WORK OF DIFFERENT TRADES TO COMPLY WITH DESIGN INTENT.
- ALL WORK DESCRIBED IN THESE DRAWINGS AND SPECIFICATIONS ARE TO COMPLY WITH THE CURRENT EDITION OF THE ONTARIO BUILDING CODE (2010) INCLUDING MOST RECENT AMENDMENTS. DRAWINGS AND SPECIFICATIONS ARE COMPLEMENTARY AND ARE TO BE READ TOGETHER.

COPYRIGHT

THIS DRAWING IS AN INSTRUMENT OF SERVICE AND IS PROTECTED BY COPYRIGHT AND IS THE SOLE PROPERTY OF ARCHITECTS DCA INC. COPIES, INCLUDING ELECTRONIC COPIES, MAY ONLY BE USED FOR THE PURPOSE INTENDED, FOR THE SINGLE PROJECT FOR WHICH THEY ARE ISSUED, AND MAY NOT BE OFFERED FOR SALE OR TRANSFER WITHOUT THE EXPRESS WRITTEN PERMISSION OF THE ARCHITECT.



ISSUE RECORD

NO.	DESCRIPTION	DATE
1	90% REVIEW	2022-07-22
2	ISSUED FOR FINAL TENDER REVIEW	2022-08-12
3	ISSUED FOR CONSTRUCTION	2022-08-16
4	ISSUED FOR PERMIT	2022-08-24
5	RE-ISSUE FOR CONSTRUCTION	2202-09-08

CLIENT

DYMON SELF-STORAGE
2-1830 WALKLEY ROAD, OTTAWA, ON
(T) 613-247-0888

CONSULTANTS

FOTENI PLANNING + DESIGN
223 MCLEOD STREET, OTTAWA ON
PLANNING & URBAN DESIGN
(T) 613-730-5709

D B GRAY ENGINEERING INC.
700 LONG POINT CIR, GLOUCESTER, ON.
CIVIL ENGINEER
(T) 613-425-8044

TACT ARCHITECTURE INC.
660R COLLEGE STREET (REAR LANE) TORONTO ON.
DESIGN ARCHITECT
(T) 416-516-1949

BRUMER ENGINEERING SERVICES LTD
25-120 WEST BEAVER CREEK ROAD, RICHMOND HILL ON
MECHANICAL CONSULTANTS
(T) 905-771-7798

HUDSON ENGINEERING
2901 STEELES AVE W UNIT 26, TORONTO, ON
ELECTRICAL CONSULTANTS
(T) 416-663-5470

D+M STRUCTURAL LTD.
110-333 PRESTON ST., OTTAWA, ON
STRUCTURAL CONSULTANTS
(T) 613 651-9490



A GROUP OF ARCHITECTS
201-1339 WELLINGTON ST. W. OTTAWA ON K1Y 3B8
WWW.ARCHITECTSDCA.COM 613.725.2294

PROJECT TITLE

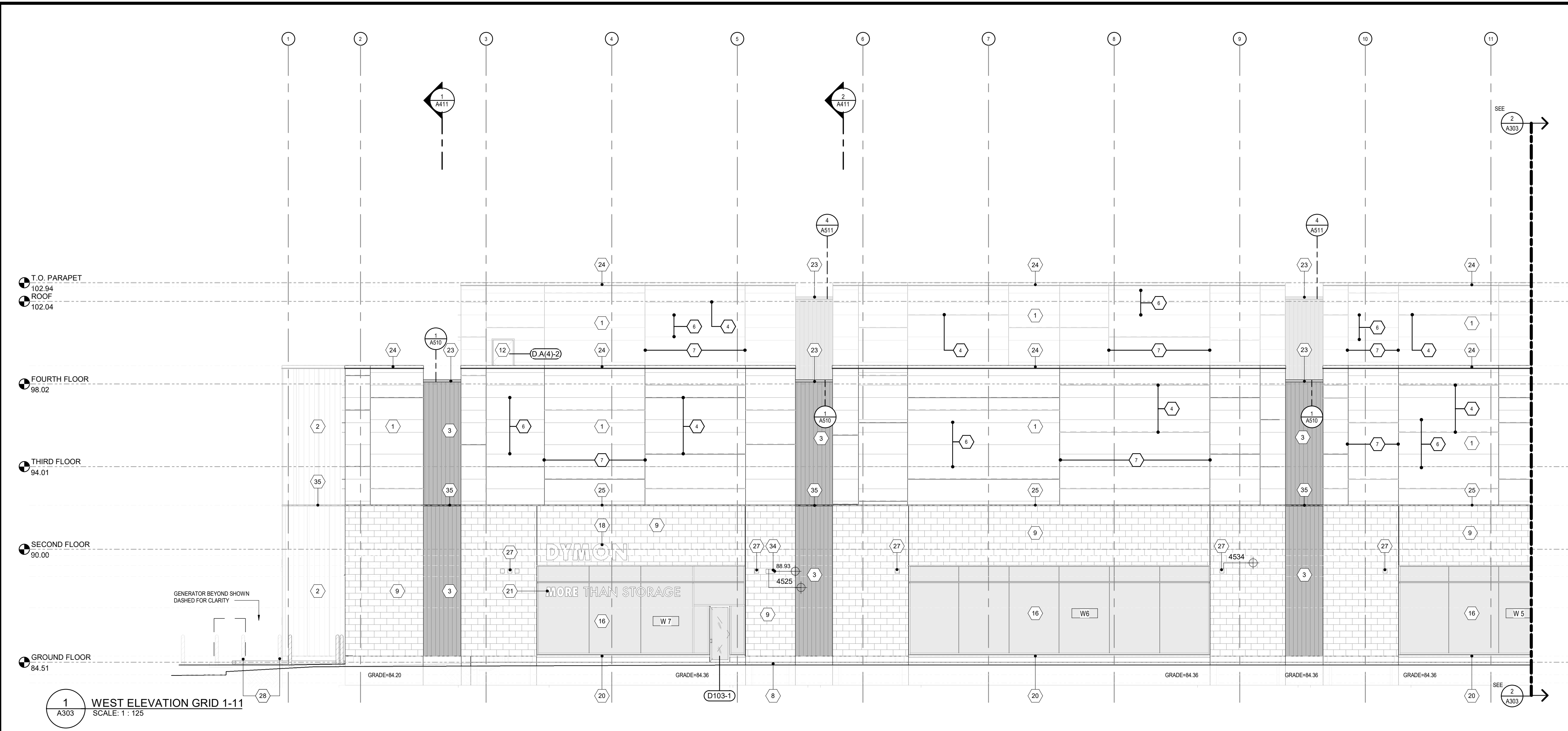
DYMON 3455 HAWTHORNE

DRAWING TITLE

EAST ELEVATION

DATE	DRAWN	JOB NO.	DRAWING NO.
AUG 2022	Author	3467	A302
SCALE	REVIEWED		
As indicated	Checker		

ARCHITECTURAL



SCUPPER LEGEND:

SCUPPER AT 4TH FLOOR ROOF	SEE	3	A311
SCUPPER AT 2ND FLOOR ROOF	SEE	2	A312
OVERFLOW SCUPPER AT 4TH FLOOR ROOF	SEE	4	A311
OVERFLOW SCUPPER AT 3RD FLOOR ROOF	SEE	1	A310

ELEVATION LEGEND:

1	PRE-MANUFACTURED INSULATED METAL PANEL SYSTEM, HORIZONTAL ORIENTATION, KINGSPIAN MINI-MICRO-RIB PROFILE, COLOUR: PEWTER
1A	PRE-MANUFACTURED INSULATED METAL PANEL SYSTEM, HORIZONTAL ORIENTATION, KINGSPIAN MINERAL FIBRE MINI-MICRO-RIB PROFILE, COLOUR: PEWTER
2	PRE-MANUFACTURED INSULATED METAL PANEL SYSTEM, VERTICAL ORIENTATION, KINGSPIAN TUBESSED SHADOWLINE PROFILE, COLOUR: DARK BRONZE
3	PRE-MANUFACTURED INSULATED METAL PANEL SYSTEM, VERTICAL ORIENTATION, KINGSPIAN TUBESSED SHADOWLINE PROFILE, COLOUR: DARK BRONZE
3A	PRE-MANUFACTURED INSULATED METAL PANEL SYSTEM, VERTICAL ORIENTATION, KINGSPIAN MINERAL FIBRE SHADOWLINE PROFILE, COLOUR: DARK BRONZE
3B	PRE-MANUFACTURED INSULATED METAL PANEL SYSTEM, VERTICAL ORIENTATION, KINGSPIAN MINERAL FIBRE SHADOWLINE PROFILE, COLOUR: PEWTER
4	KINGSPIAN ACCENT FIN SHAPE, BLADE EXTRUSION (P) COLOUR: PEWTER
5	PRE-FINISHED METAL FLASHING JOINT
6	TYPICAL IMP JOINT, REVEALS AS PER MANUFACTURER'S RECOMMENDATIONS
7	1/2" VERTICAL REVEAL JOINT FACTORY FOLDED (CW) TRIMLESS ENDS AND RECESSED RUBBER GASKET IN IMP SYSTEM, INSTALL REVEALS AS PER MANUFACTURER'S RECOMMENDATIONS. REFER TO DETAIL 8 / A301
8	POURED CONCRETE
9	(11.587" x 23.557" x 13.557") ARBISORCAFT ADAR LIMESTONE ARCHITECTURAL MASONRY UNIT, PATTERNS, GRIGES, FINISH FINE CROSSED RUNNING BOND (REFER TO SPECIFICATIONS)
10	BACKLIT GLASS WITH REPT PATTERN, COLOUR TO MATCH BOSS BLUE WITH WHITE FRITTING BY SIGNAGE
11	MASONRY EXPANSION JOINT ROPED AND CAULKED, TYPICAL COLOUR TO MATCH MASONRY MORTAR
12	INSULATED HOLLOW METAL DOOR, REFER TO SPECIFICATIONS & DOOR SCHEDULE, COLOUR TO MATCH ADJACENT EXTERIOR FINISH
12A	HOLLOW METAL DOOR, REFER TO SPECIFICATIONS & DOOR SCHEDULE, COLOUR TO MATCH ADJACENT EXTERIOR FINISH
13	FULL VISION HIGH SPEED ROLL-UP OVERHEAD DOOR CW MOTOR, TRACK AND HARDWARE, SEE SPECIFICATIONS
14	INSULATED HOLLOW METAL DOOR, REFER TO SPECIFICATIONS & DOOR SCHEDULE, COLOUR TO MATCH ADJACENT EXTERIOR FINISH, ARCHITECTURAL MASONRY SET DARK LIMESTONE
14A	INSULATED HOLLOW METAL DOOR, REFER TO SPECIFICATIONS & DOOR SCHEDULE, COLOUR TO MATCH ADJACENT EXTERIOR FINISH, IMP PEWTER
15	INSULATED OVERHEAD DOOR COMPLETE WITH TRACK & HARDWARE (REFER TO SPECIFICATIONS), COLOUR: PEWTER
16	CURTAIN WALL GLAZING IN THERMALLY BROKEN ANODIZED ALUMINUM STOREFRONT FRAMING SYSTEM, FRAME COLOUR AND PROFILE TO BE: EXTERIOR: PEWTER, INTERIOR: CLEAR ANODIZED
17	SECURITY CAMERA SUPPLIED AND INSTALLED BY DYMON
18	INTERNALLY LIT SIGNAGE BY SIGN SUPPLIER, PROVIDE POWER SUPPLY AND 3/4" THICK EXTERIOR GRADE PLYWOOD FOR SIGNAGE MOUNTING, G.C. TO PROVIDE SHOP DRAWINGS, REFER TO DETAILS FOR SIGNAGE INSTALLATION, COLOUR TBC
18A	INTERNALLY LIT SIGNAGE BY SIGN SUPPLIER, PROVIDE POWER, G.C. TO PROVIDE SHOP DRAWINGS, REFER TO DETAILS FOR SIGNAGE INSTALLATION TO BE CONFIRMED BY OWNER AND SIGNAGE SUPPLIER
19	PRE-FINISHED METAL CANOPY ALUMINUM COMPOSITE MATERIAL, ALICOL LARSON FINISH, PEWTER, GAUGE TBC, REFER TO SECTION DETAILS 1 & 3 / DWG A-516, 1.34(DWG A-517) AND 1&2(DWG A-518)
20	ANODIZED ALUMINUM WINDOW SILL TO MATCH CURTAIN WALL BY WINDOW SUPPLIER
21	SPANDREL GLAZING CW INSULATED BACK PANEL, COLOUR TO MATCH IMP PEWTER
22	DOCK SEAL, SEE SPECIFICATIONS
23	PRE-FINISHED CONTINUOUS METAL SCUPPER, REFER TO PLANS AND DETAILS
23A	PRE-FINISHED METAL SCUPPER THROUGH THE WALL, REFER TO PLANS AND DETAILS
24	CONTINUOUS BENT METAL CAP, 22 GA. PRE-FINISHED METAL CW HIDDEN FASTENERS, COLOUR PEWTER, REFER TO SECTIONS AND DETAILS
25	PRE-FINISHED METAL FLASHING CW BRP EDGE, PAINT COLOUR: PEWTER TO MATCH ADJACENT IMP, REFER TO DETAIL 30A3
26	HOT DIPPED GALVANIZED BENT STEEL PLATE AROUND 3 SIDES OF DRIVING CW PRE-FINISHED METAL FLASHING, COLOUR: PEWTER, REFER TO SECTIONS AND DETAILS
27	5" DIAM. COMBUSTION AIR INTAKE CW VENT CAP (FRAMING HEATERS), COLOUR TO MATCH WALL FINISH, SEE MECHANICAL
28	6" DIAMETER CONCRETE FILLED STEEL PROTECTION BOLLARD, 54" HIGH ABOVE GRADE
29	SMWSE CONNECTION REFER TO MAX. MAX 900mm, MIN 300mm ABOVE GRADE
30	HOT DIPPED GALVANIZED STEEL GUARDRAIL AT LOADING RAMP
31	HOT DIPPED GALVANIZED STEEL WALL PROTECTION, PAINTED YELLOW
32	MECHANICAL DOOR, PRE-FINISHED METAL, COLOUR TO MATCH WALL FINISH, REFER TO MECHANICAL
33	PRE-FINISHED METAL PARAPET CAP, 22GA. ALUMINUM COMPOSITE MATERIAL, ALICOL LARSON FINISH, PEWTER, REFER TO MANSUETEE SECTION DETAILS
33A	ALUMINUM COMPOSITE MATERIAL, CW CONTINUOUS BENT METAL CAP, 22GA. PRE-FINISHED VENTED METAL SOFFIT, ALICOL LARSON FINISH, PEWTER
34	EXTERIOR WALL PAK LIGHT, CENTERED ON EXIT (IF APPLICABLE), REFER TO ELEC. DWGS
35	PRE-FINISHED METAL IMP STACK JOINT COVER TRM, COLOUR TO MATCH IMP
36	PRE-FINISHED INSULATED METAL SYSTEM, CW CONTINUOUS BENT METAL CAP, 22GA. PRE-FINISHED VENTED METAL SOFFIT AT LOADING AREA AND AT EXT STAR RECESSED DOOR, COLOUR TO MATCH ADJACENT IMP FINISH
37	TRAFFIC LIGHTS, REFER TO ELECTRICAL & SPECIFICATIONS
38	ALUMINUM COMPOSITE MATERIAL, CW 4mm FIRE RESISTANT CORE, ALICOL LARSON FINISH, LIGHT FINISH, INSTALLED ON PRE-MANUFACTURED INSULATED METAL PANEL, "KARRIER" SYSTEM, KARRIER PANEL, COLOUR: WHITE
39	TYP. 1" VERTICAL REVEAL JOINT CW ACM FILLER PLATE, COLOUR: CHARCOAL, INSTALL REVEALS PER MANUF. RECOMMENDATIONS
40	TYP. 1/2" HORIZONTAL REVEAL JOINT CW ACM FILLER PLATE, COLOUR: CHARCOAL, INSTALL REVEALS PER MANUF. RECOMMENDATIONS, REFER TO DETAIL 10A/11
41	PROVIDE LIGHTING FIXTURES AND REQUIRED POWER CONNECTION INSIDE LANTERN AT ROOF DECK LEVEL, REFER TO ROOF PLAN AND ELECTRICAL
42	RADIANT HEATER VENT PIPING CW NON-COMBUSTIBLE SLEEVE, COLOUR TO MATCH ADJACENT WALL FINISH, SEE MECHANICAL

GENERAL NOTES:

- DO NOT SCALE DRAWINGS, ONLY FIGURED DIMENSIONS ARE TO BE USED, WHERE DOUBT EXISTS, FILE REQUEST FOR INTERPRETATION AND REQUEST CLARITY.
- IT IS THE RESPONSIBILITY OF THE GENERAL CONTRACTOR TO VERIFY DIMENSIONS ON SITE, REPORT DISCREPANCIES TO THE ARCHITECT PROMPTLY.
- GENERAL CONTRACTOR TO TAKE INTO ACCOUNT CONSTRUCTION TOLERANCE, GENERAL CONTRACTOR TO COORDINATE THE WORK OF DIFFERENT TRADES TO COMPLY WITH DESIGN INTENT.
- ALL WORK DESCRIBED IN THESE DRAWINGS AND SPECIFICATIONS ARE TO COMPLY WITH THE CURRENT EDITION OF THE ONTARIO BUILDING CODE (2010) INCLUDING MOST RECENT AMENDMENTS.
- DRAWINGS AND SPECIFICATIONS ARE COMPLEMENTARY AND ARE TO BE READ TOGETHER.

COPYRIGHT:
THIS DRAWING IS AN INSTRUMENT OF SERVICE AND IS PROTECTED BY COPYRIGHT AND IS THE SOLE PROPERTY OF ARCHITECTS DCA INC. COPIES, INCLUDING ELECTRONIC COPIES, MAY ONLY BE USED FOR THE PURPOSE INTENDED, FOR THE SINGLE PROJECT FOR WHICH THEY ARE ISSUED, AND MAY NOT BE OFFERED FOR SALE OR TRANSFER WITHOUT THE EXPRESS WRITTEN PERMISSION OF THE ARCHITECT.



ISSUE RECORD

NO.	DESCRIPTION	DATE
1	90% REVIEW	2022-07-22
2	ISSUED FOR FINAL TENDER REVIEW	2022-08-12
3	ISSUED FOR CONSTRUCTION	2022-08-16
4	ISSUED FOR PERMIT	2022-08-24
5	RE-ISSUE FOR CONSTRUCTION	2022-09-08

CLIENT:
DYMON SELF-STORAGE
2-1830 WALKLEY ROAD, OTTAWA, ON
(T) 613-247-0888

CONSULTANTS:
FOTENI PLANNING + DESIGN
223 MCLEOD STREET, OTTAWA ON
PLANNING & URBAN DESIGN
(T) 613-730-5709

D B GRAY ENGINEERING INC.
700 LONG POINT CIR, GLOUCESTER, ON.
CIVIL ENGINEER
(T) 613-425-8044

TACT ARCHITECTURE INC.
660R COLLEGE STREET (REAR LANE) TORONTO ON.
DESIGN ARCHITECT
(T) 416-516-1949

BRUMER ENGINEERING SERVICES LTD
25-120 WEST BEAVER CREEK ROAD, RICHMOND HILL ON
MECHANICAL CONSULTANTS
(T) 905-771-7798

HUDSON ENGINEERING
2901 STEELES AVE W UNIT 26, TORONTO, ON
ELECTRICAL CONSULTANTS
(T) 416-663-5470

D+M STRUCTURAL LTD.
110-333 PRESTON ST., OTTAWA, ON
STRUCTURAL CONSULTANTS
(T) 613 651-9490



A GROUP OF ARCHITECTS
201-1339 WELLINGTON ST. W. OTTAWA ON K1Y 3B8
WWW.ARCHITECTSDCA.COM 613.725.2294

PROJECT TITLE:
DYMON 3455 HAWTHORNE

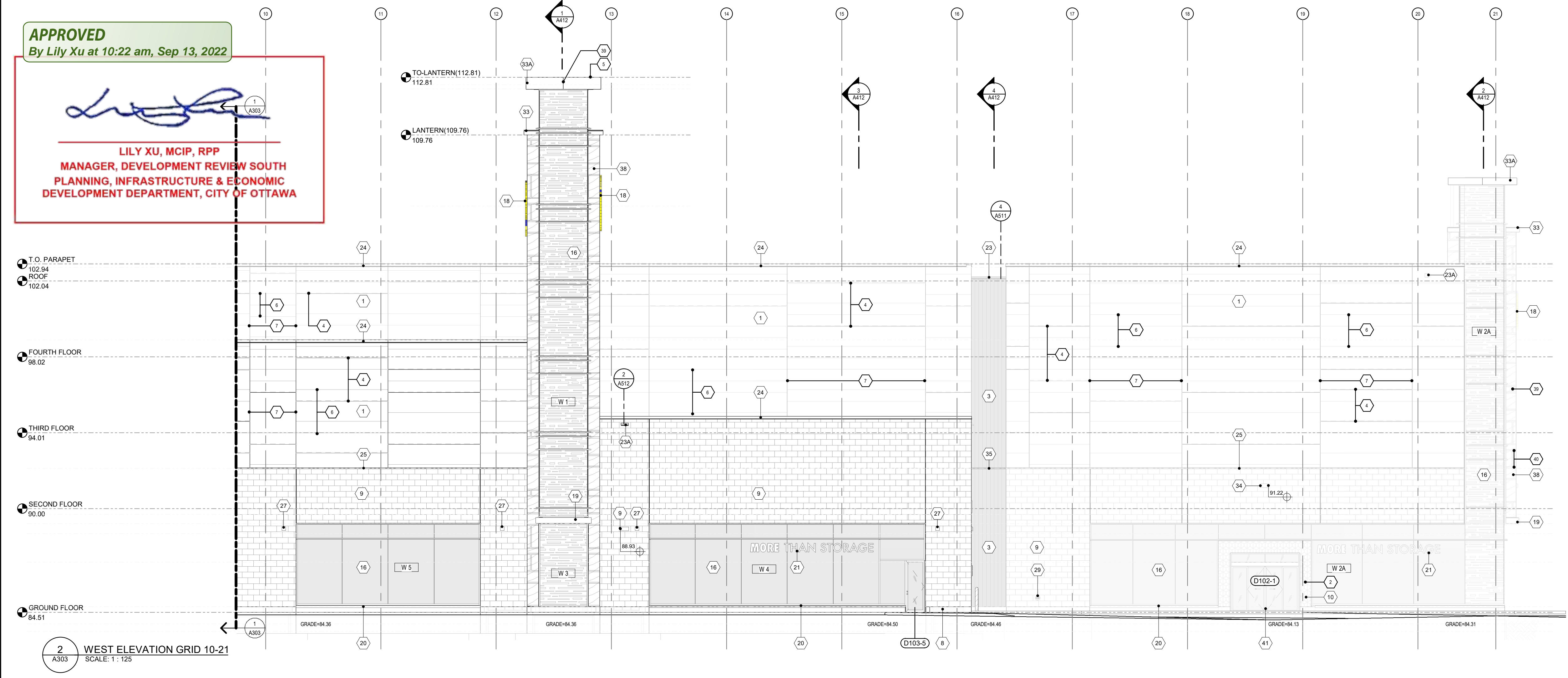
DRAWING TITLE:
WEST ELEVATION

DATE AUG 2022	DRAWN Author	JOB NO. 3467	DRAWING NO. A303
SCALE As indicated	REVIEWED Checker		

ARCHITECTURAL

APPROVED
By Lily Xu at 10:22 am, Sep 13, 2022

LILY XU, MCIP, RPP
MANAGER, DEVELOPMENT REVIEW SOUTH
PLANNING, INFRASTRUCTURE & ECONOMIC
DEVELOPMENT DEPARTMENT, CITY OF OTTAWA



1 WEST ELEVATION GRID 1-11
SCALE: 1:125

2 WEST ELEVATION GRID 10-21
SCALE: 1:125

D07-12-20-01-01