

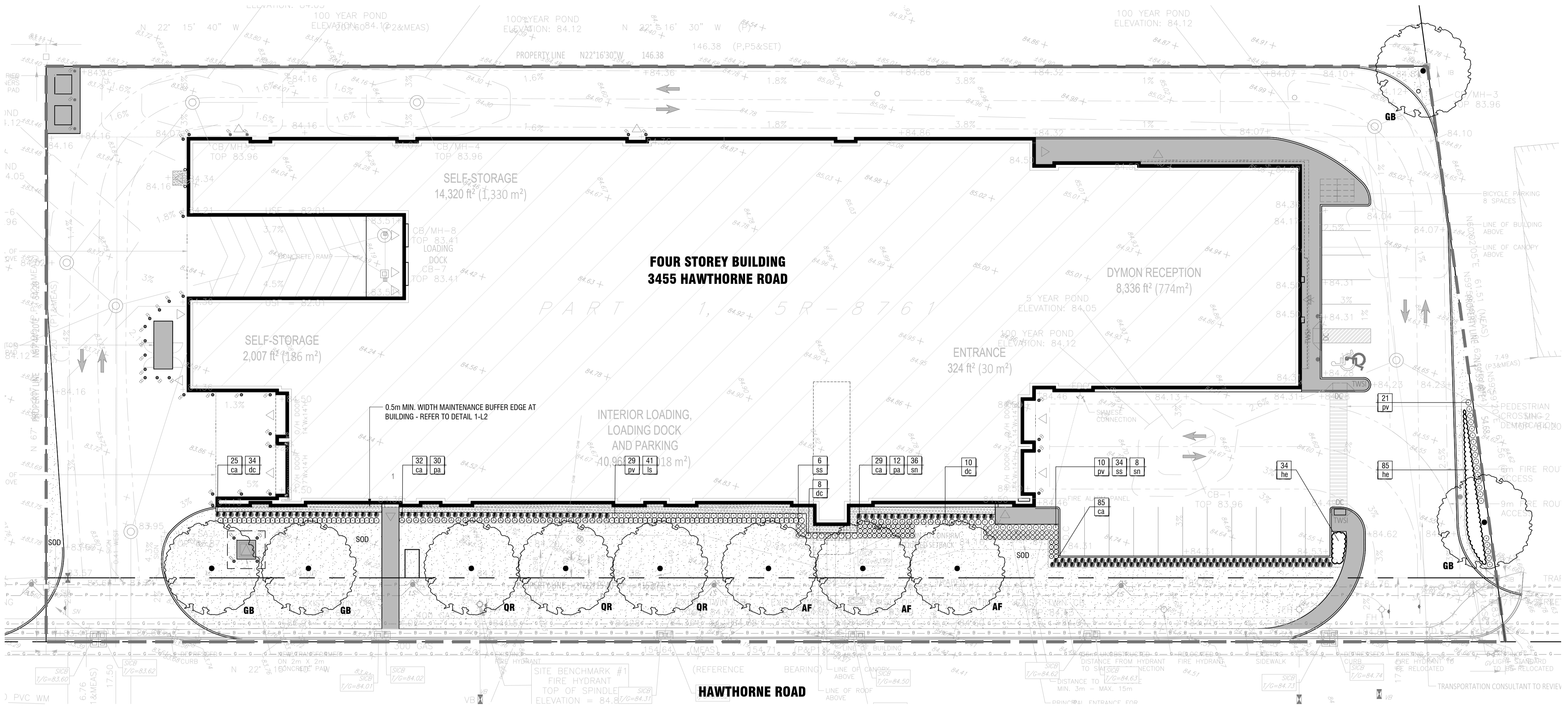
Client / Client



key plan / plan repère

PRELIMINARY
 NOT FOR CONSTRUCTION

- legend / légende
- SCOPE OF APPLICATION
 - LARGE DECIDUOUS TREE (REFER TO PLANTING SCHEDULE FOR SPECIES AND QUANTITIES)
 - ZZ
 - ORNAMENTAL GRASS / PERENNIAL PLANTING
 - PERENNIAL MASS PLANTING
 - MAINTENANCE BUFFER EDGE AT BUILDING - REFER TO DETAIL 1-L2
 - SOD



1 LANDSCAPE PLAN
L1 1:250

NOTES:
 DO NOT SCALE DRAWINGS;
 NOTES ARE APPLICABLE TO ALL DRAWINGS IN THE SET;
 Fotenn Consultants Inc. IS NOT RESPONSIBLE FOR ACCURACY OF BASE INFORMATION;
 REFER TO CIVIL ENGINEERING DRAWINGS FOR GRADING & SITE SERVICING INFORMATION;
 THE CONTRACTOR IS RESPONSIBLE FOR CONFIRMING SITE CONDITIONS AND REPORTING ANY DISCREPANCIES TO THE LANDSCAPE ARCHITECT;
 THE CONTRACTOR IS RESPONSIBLE FOR CONFIRMING EXACT LOCATIONS OF ALL UNDERGROUND SERVICES AND OBTAINING CLEARANCE FROM ALL APPLICABLE UTILITIES. PROPOSED WORKS FOUND TO BE IN CONFLICT WITH UNDERGROUND SERVICES MAY BE ADJUSTED AT THE DIRECTION OF THE LANDSCAPE ARCHITECT;
 LANDSCAPE ELEMENTS SHOWN ARE SUBJECT TO THE FINAL LOCATION OF UNDERGROUND SERVICES AND UTILITIES;
 DO NOT INSTALL TREES ON PROPERTY / LOT LINES OR WITHIN DRAINAGE EASEMENTS;
 PERFORM WORK IN ACCORDANCE WITH DETAILS AND SPECIFICATIONS;
 ALL PLANT MATERIAL SHALL BE No. 1 NURSERY STOCK AND SHALL MEET OR EXCEED THE SPECIFICATION OF THE Canadian Standards for Nursery Stock, AS PUBLISHED BY THE Canadian Nursery Landscape Association;
 SPECIES SUBSTITUTIONS ARE NOT PERMITTED WITHOUT PRIOR WRITTEN APPROVAL OF THE LANDSCAPE ARCHITECT;
 ALL UN-PAVED SURFACES TO RECEIVE 150mm DEPTH TOPSOIL & SOD.

PLANTING SCHEDULE				
KEY	QTY.	BOTANICAL NAME	COMMON NAME	SIZE / CONDITION / SPACING
DECIDUOUS TREES				
AF	3	Acer x freemanii	Freeman's Maple	70mm cal. / W.B.
GB	4	Ginkgo biloba	Maidenhair Tree	70mm cal. / W.B.
QR	3	Quercus rubra	Red Oak	70mm cal. / W.B.
PERENNIALS/GRASSES/FERNS				
ca	171	Calamagrostis x acutiflora 'Karl Foerster'	Feather Reed Grass	#3 pot / 70cm o.c.
dc	52	Deschampsia cespitosa 'Gold Dust'	Tufted Hair Grass	#2 pot / 50cm o.c.
he	119	Hemerocallis 'Purple D'Oro'	Daylily	#2 pot / 35cm o.c.
ls	41	Liatris spicata 'Floristan White' (Floristan Weiss)	Floristan White Blazing Star	#2 pot / 50cm o.c.
pv	70	Panicum virgatum 'Prairie Fire'	Prairie Fire Switchgrass	#2 pot / 50cm o.c.
pa	42	Perovskia x 'Little Spire'	Russian Sage	#3 pot / 75cm o.c.
sn	44	Salvia nemorosa 'Snow Hill'	Snow Hill Sage	#2 pot / 50cm o.c.
ss	40	Salvia x sylvestris 'May Night'	May Night Sage	#2 pot / 50cm o.c.

CITY OF OTTAWA STANDARDS FOR TREE PLANTING:
 MAINTAIN A MINIMUM DISTANCE OF 3.0m FROM ALL HYDRO TRANSFORMERS;
 MAINTAIN A MINIMUM DISTANCE OF 2.5m FROM FIRE HYDRANTS AND NO PLANTING IN FRONT OF HYDRANTS;
 MAINTAIN A MINIMUM DISTANCE OF 1.0m FROM ALL UNDERGROUND SERVICES;
 MAINTAIN A MINIMUM DISTANCE OF 1.0m FROM ALL BELL AND CABLE BOXES;
IMPORTANT NOTICE FOR CONTRACTOR:
 THE CITY OF OTTAWA REQUIRES A Certificate of Completion (F1) Landscape Works TO BE SUBMITTED AND SEALED BY THE LANDSCAPE ARCHITECT. CONTRACTORS ARE RESPONSIBLE FOR FAMILIARIZING THEMSELVES WITH THE REQUIREMENTS OF THIS PROCESS AND PROVIDING SUFFICIENT NOTICE TO THE LANDSCAPE ARCHITECT TO CONDUCT SITE REVIEWS DURING INSTALLATION OF TREES. THE 1 YEAR WARRANTY PERIOD SHALL NOT COMMENCE UNTIL THE LANDSCAPE ARCHITECT HAS SUBMITTED THE F1 Certificate.
 PRIOR TO INSTALLATION OF TREES, THE DEVELOPER WILL CONTACT THE PLANNING AND GROWTH MANAGEMENT AND FORESTRY SERVICES TO REVIEW THE SPECIES AND LOCATION OF TREES.

02	issue for SPA	2020/12/14
01	issue for internal coordination	2020/12/10
00	issue for Client review	2020/11/30
rev/n	description / la description	yyyy/mm/dd

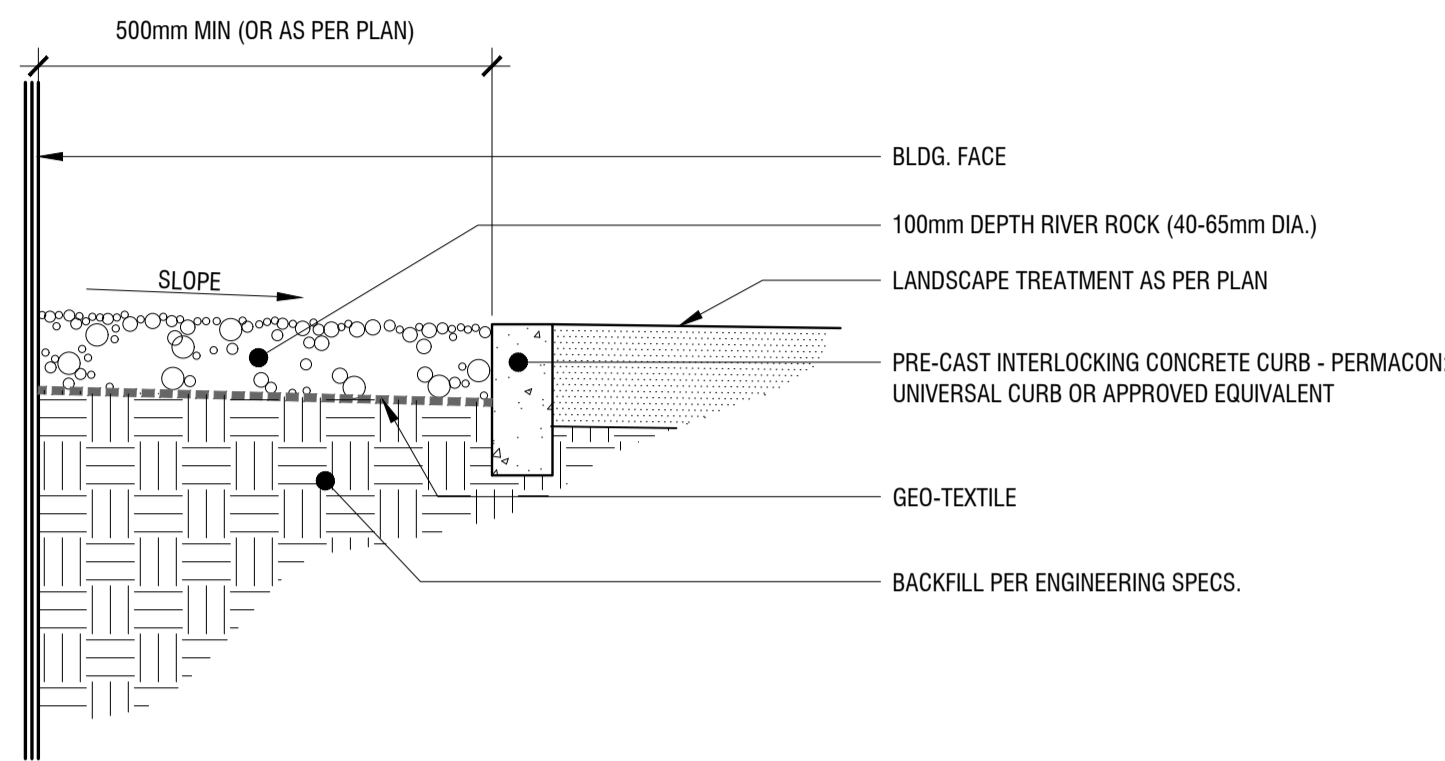
FOTENN Planning + Design
 396 Cooper Street, Suite 300
 Ottawa, ON, CANADA K2P 2H7
 613.730.5709
 fotenn.com

north / le nord stamp / le cachet

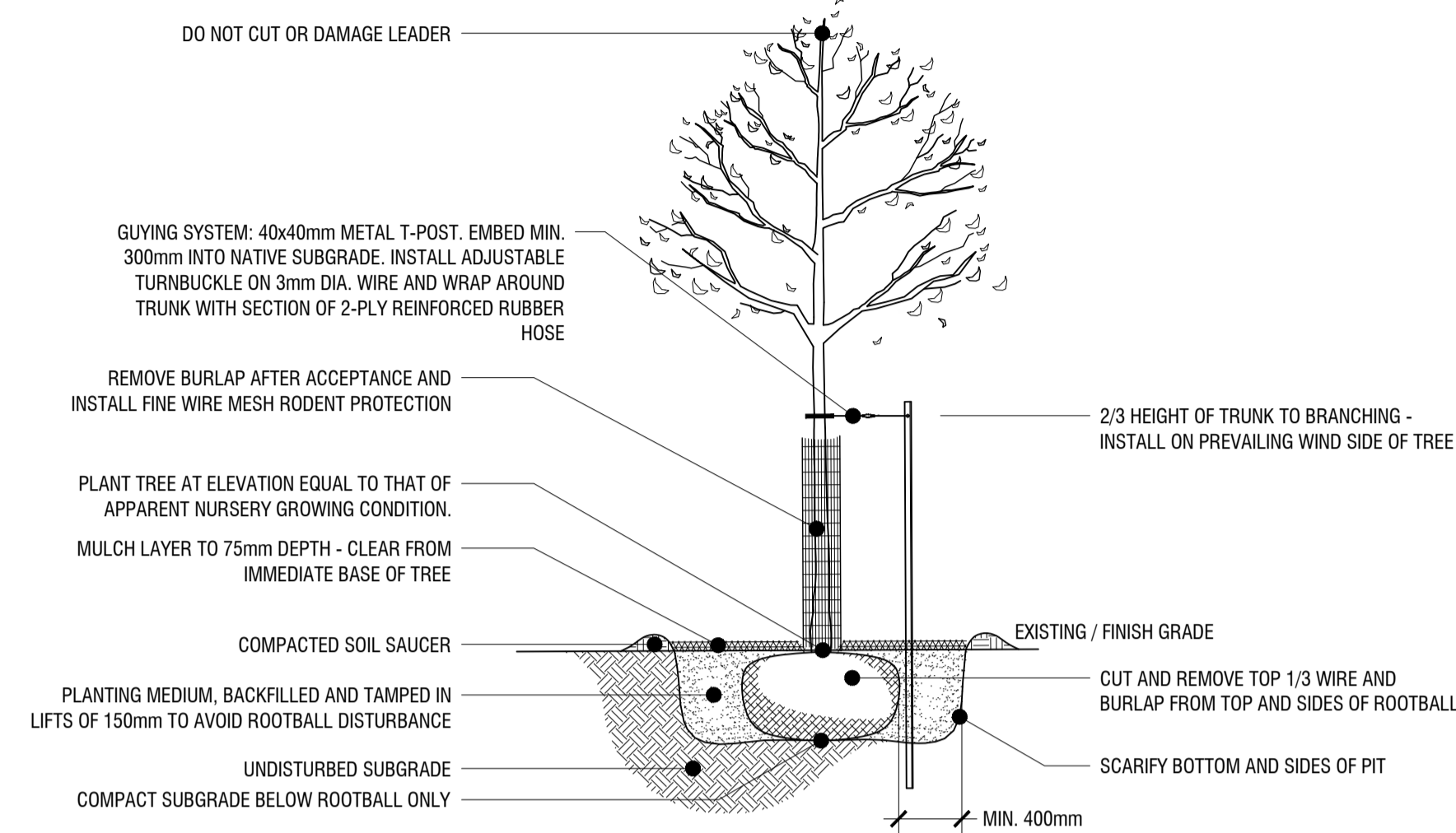
project / projet
3455 HAWTHORNE ROAD
 drawing / dessin

LANDSCAPE PLAN

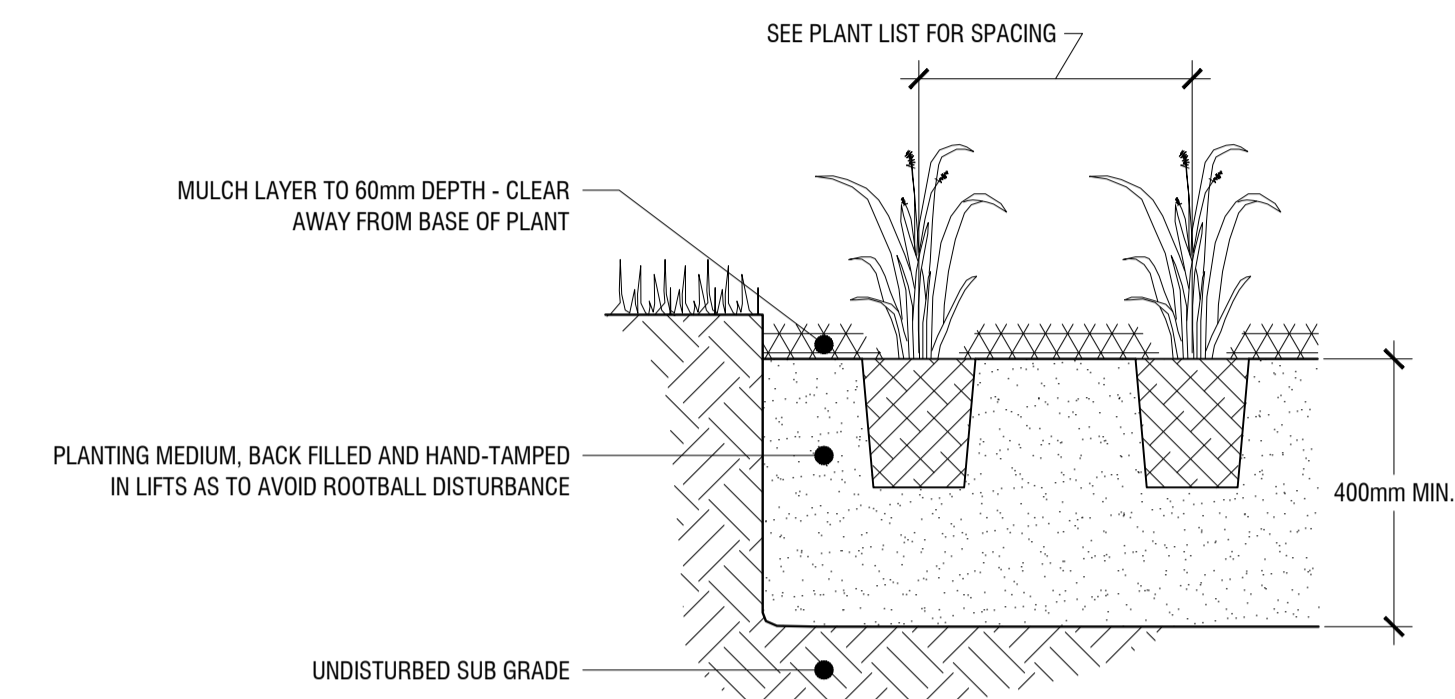
designed / conçu OM / KP	drawn / dessiné OM	reviewed / examiné KP
date NOV. 2020		
drawing number / No. du dessin		



1 MAINTENANCE BUFFER AT BUILDING EDGE
L2 1:10



2 DECIDUOUS TREE PLANTING DETAIL
L2 1:40



3 ORNAMENTAL GRASS/PERENNIAL PLANTING DETAIL
L2 1:10

rev'n	description / la description	yyyy/mm/dd
02	issue for SPA	2020/12/14
01	issue for internal coordination	2020/12/10
00	issue for Client review	2020/11/30

FOTENN Planning + Design
 396 Cooper Street, Suite 300
 Ottawa, ON, CANADA K2P 2H7
 613.730.5709
 fotenn.com

north / le nord stamp / le cachet

project / projet
3455 HAWTHORNE ROAD

drawing / dessin
LANDSCAPE DETAILS

designed / conçu OM / KP	drawn / dessiné OM	reviewed / examiné KP
date NOV. 2020		project number / No. du projet