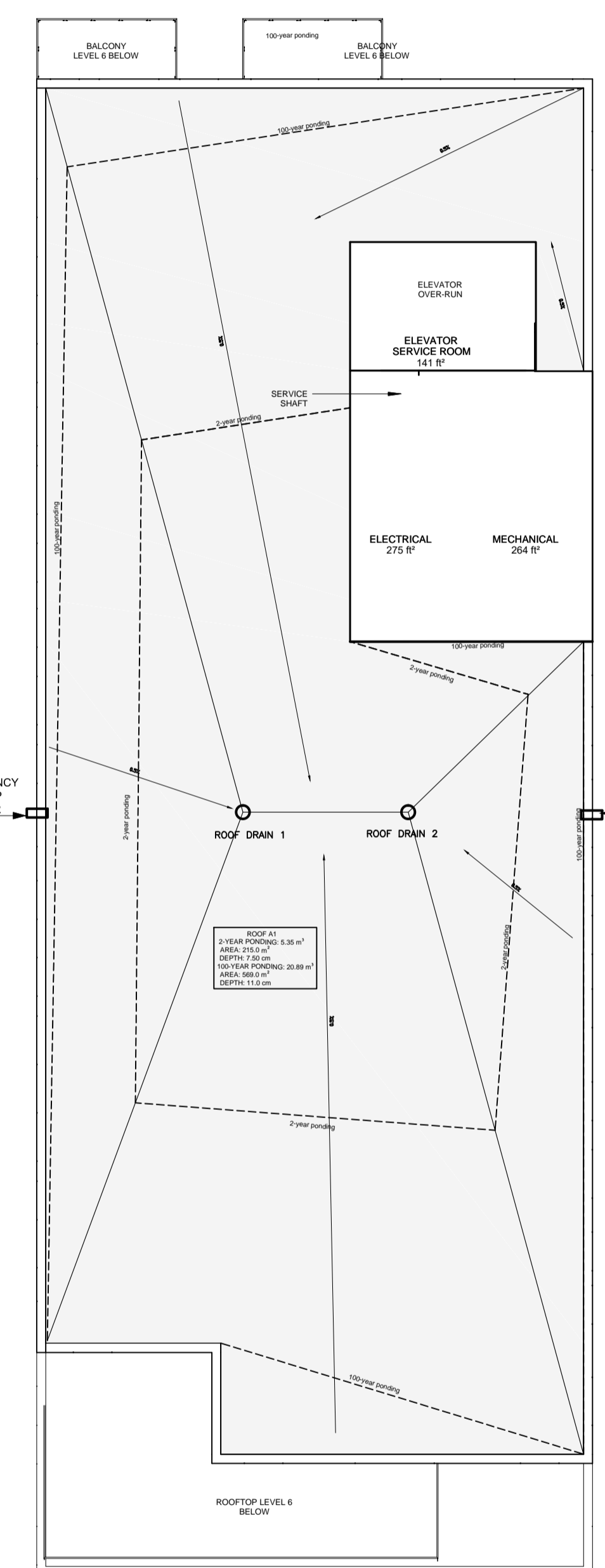


374 MCARTHUR AVENUE: PROPOSED 100 mm WATERMAIN TABLE						NOTE
STATION	SURFACE ELEVATION	TOP OF WM ELEVATION	TOP OF MAIN	INVERT OF MAIN	DESCRIPTION	
0+0.00	61.05	59.5	59.04		PROPERTY LINE	
0+3.95	61.05	59.5	59.04		CROSSING SANITARY PIPE	CROSSING OVER SANITARY PIPE
0+9.53	61.2	58.9	57.96		CROSSING STORMWATER PIPE	CROSSING OVER STORMWATER PIPE
0+14.20	61.1	58.9	59		CONNECTION TO WATERMAIN 400 MM	INSULATION REQUIRED

NOTE: CONTRACTOR TO CONFIRM BY EXCAVATING

- NOTES:
- EXISTING SERVICES AND UTILITIES SHOWN ON THIS DRAWING WERE TAKEN FROM THE BEST AVAILABLE RECORDS. CONTRACTOR IS REQUESTED TO CHECK IN THE FIELD FOR LOCATION AND ELEVATION OF PIPES AND CHECK WITH AUTHORITIES AND UTILITIES TO HIS SATISFACTION BEFORE DIGGING.
 - CONTRACTOR IS ADVISED TO COLLECT INFORMATION ON SOIL CONDITIONS AS DEEMED NECESSARY.
 - PROPOSED SITING DETAILS FOR THIS PROPOSED BUILDING WERE TAKEN FROM THE SITE PLAN PREPARED BY "ROSSMANN ARCHITECTURE".
 - EXISTING HORIZONTAL AND VERTICAL SURVEY DATA SHOWN ON THIS PLAN INCLUDING SITE BENCHMARK, ROAD ELEVATIONS AND THE TOPOGRAPHICAL INFORMATION OF THE LOT SHOWN WERE PROVIDED BY "ANNIS O'SULLIVAN, VOLLEBEKK LTD" (MARCH 31, 2020) AND ARCH-NOVA DESIGN INC. IS NOT RESPONSIBLE FOR THE SURVEY PROVIDED.
 - ALL SERVICES INFORMATION WERE PROVIDED BY THE CITY OF OTTAWA AND ARCH-NOVA IS NOT RESPONSIBLE FOR THE ACCURACY OF PLANS AND INFORMATION. CONTRACTOR IS ADVISED TO CHECK ACCURACY ON THE SITE AND CONFIRM WITH THE CITY STAFF BEFORE ANY WORK ON THE SITE.
 - ALL GRADING SHALL BE DONE TO THE SATISFACTION OF THE CITY OF OTTAWA.
 - ALL GRADES SHOWN ARE METRIC. EXISTING AND PROPOSED GRADES SHOWN ON THIS DRAWING ARE BASED ON A GEODETIC BENCHMARK PROVIDED BY "ANNIS O'SULLIVAN, VOLLEBEKK LTD" (MARCH 31, 2020) AS SHOWN ON THEIR SITE PLAN.
 - USE SADDLE CONNECTIONS WITH CORP STOPS FOR THE 50 MM WATER SERVICES.
 - CONSTRUCT ALL SANITARY PIPES IN ACCORDANCE WITH CITY OF OTTAWA'S LATEST REVISED STANDARDS OTHERWISE AS PER DPSS AND DPSS SPECIFICATIONS.
 - ALL WORKS CONSTRUCTED BY THE CONTRACTOR SHALL MEET CITY OF OTTAWA'S CURRENT STANDARDS.
 - THE CONTRACTOR SHALL CONSTRUCT AND ENSURE THAT THE 100 mm WATER SERVICES ON THIS LOT SHALL HAVE A MINIMUM OF 2.4m OF GROUND COVER; OTHERWISE THERMAL INSULATION IS REQUIRED AS PER CITY SPECIFICATIONS W 21, W 22 AND W 23. THE WATER SERVICE INSTALLATION SHALL BE STEEL PIPE AND CONSTRUCTED IN ACCORDANCE WITH STD DWG W26.
 - IF WATER SERVICE IS LESS THAN 0.3 m FROM SEWER, MANHOLE OR CATCH BASIN, CONTRACTOR IS REQUESTED TO INSULATE BETWEEN THEM WITH 50mm RIGID INSULATION (AS PER CITY DETAIL W-23).
 - ALL WATERMAIN SERVICE AND FITTINGS SHALL CONFORM TO APPROVED AWA AND/OR CSA STANDARDS.
 - THE CONTRACTOR SHALL BE RESPONSIBLE FOR OBTAINING ALL PERMITS TO COMPLETE THE WORKS.
 - WATER SERVICES CONNECTION ON MCARTHUR AVENUE SHALL BE DONE BY THE CITY. EXCAVATION, BACKFILLING AND REINSTATEMENTS BY CONTRACTOR.
 - THE OWNER AND/OR HIS CONTRACTOR SHALL CONTACT ALL THE UTILITY COMPANIES REGARDING RELOCATION REQUIREMENTS FOR ANY EXISTING OVERHEAD UTILITY POLE.
 - WATER SERVICE AND WATERMAIN TRENCH DETAILS AS PER CITY W-17 DETAIL.
 - PROPOSED SANITARY SERVICES LATERAL SHALL BE PVC-SDR28 OR EQUIVALENT AND CONNECTION TO THE EXISTING SII SEWER SHALL BE AS PER CITY OF OTTAWA DWG S11 SEWER TRENCH DETAILS AS PER STD DWG S6 & S7. CONNECT TO CITY SEWER PIPES USING SADDLE SEWER TRENCH DETAILS AS PER STD DWG S6 & S7. SADDLE CONNECTIONS (MAX 300 MM), MANUFACTURED "T" CONNECTIONS OR FOR LARGE DIAMETERS NEW MANHOLES.
 - SANITARY AND STORM SEWER SERVICES BENDS AND RISERS USED MUST BE CONSTRUCTED TO THE CITY'S SATISFACTION.
 - DETAILS OF THE EXISTING SEWERS AND WATERMAIN SHOWN ON MCARTHUR AVENUE PLANS OBTAINED FROM THE CITY MAY NOT BE CURRENT. THE CONTRACTOR SHALL REFER TO THE CITY'S SEWER AND WATERMAIN DRAWINGS FOR DETAILS. CONTRACTOR IS ADVISED TO EXCAVATE AND INVESTIGATE THE SEWER ELEVATIONS IN FRONT OF THIS PROPERTY FIRST TO ENSURE THAT 1.5% (MIN) PIPE SLOPE OF THE SANITARY LATERAL CAN BE ACHIEVED USING THE PROPOSED UNDERSIDE OF CONCRETE FOOTINGS ELEVATIONS. IF 1.5% (MIN) SLOPE IS NOT POSSIBLE FROM THE HOUSE TO THE SEWER THEN THE CONTRACTOR SHOULD INFORM THE OWNER'S PROJECT MANAGER AND THE CITY ACCORDINGLY FOR FURTHER DIRECTION.
 - FOR DEVELOPMENT OF THIS LOT, THE CONTRACTOR MUST CONSTRUCT THE UNDERGROUND SANITARY AND WATER SERVICES FROM SEWER AND WATERMAIN TO THE PROPERTY FIRSTLY, PRIOR TO HOUSE CONCRETE FOUNDATION POURING.
 - IF THE DEPTH FROM UNDERSIDE OF HOUSE CONCRETE FOOTING TO PROPOSED FINISHED GROUND ELEVATION IS LESS THAN 1.8 m IT IS RECOMMENDED THAT INSULATION (500 mm TICK) MINIMUM BE INSTALLED AT THE BUILDING'S FOOTING AND FOUNDATION OF THE HOUSE TO PROVIDE SUFFICIENT FROST COVER FOR THE FOUNDATION STRUCTURES. THE FOOTINGS WILL NEED TO BE REVIEWED FOR INSULATION BY THE OWNER'S SOILS ENGINEER. EXACT INSULATION REQUIREMENTS SHALL BE AS PER ARCHITECT'S INSULATION DETAILS AS SHOWN ON THEIR ARCHITECTURAL DRAWINGS AND CONFIRMED BY THE OWNER'S SITE SOILS ENGINEER.
 - WATER SERVICE LINES AS PER STD.DWG W26.
 - BLANK WATER SERVICES AT CITY WATERMAIN BY THE CITY CREW. APPROXIMATE LOCATION SHOWN AND TO BE CONFIRMED BY CONTRACTOR.
 - EXISTING SEWERS TO BE CAPPED AT THE PROPERTY LINE TO THE SATISFACTION OF CITY'S SEWER OPERATIONS. APPROXIMATE LOCATION SHOWN AND TO BE CONFIRMED BY CONTRACTOR.
 - BACKWATER VALVES WILL BE USED ON SERVICES PER SC14, SC14.1 AND SC14.2
 - ASPHALT AND GRAVEL SURFACES TO BE CLEARED AND REPLACED WITH SOFT LANDSCAPING AS SHOWN ON ARCHITECTURAL AND LANDSCAPING PLANS.
 - ALL SERVICE LATERALS UNDER THE BUILDING FOOTINGS TO BE SLEEVED IF THE PIPE IS LESS THAN 0.3 m BELOW THE FOOTING.
 - PROPOSED SANITARY AND STORMWATER SERVICES LATERALS SHALL BE PVC-SDR28 OR EQUIVALENT AND CONNECTIONS TO THE EXISTING CITY WATERMAIN SHALL BE AS PER CITY OF OTTAWA DWG.S11. SEWER TRENCH DETAILS AS PER STD DWG S6 & S7.
 - ALL PROPOSED STORM PIPES WITH OBVERT LESS THAN 2.0 m BELOW THE SURFACE ARE TO BE INSULATED FOR FROST PROTECTION.
 - ROOF DRAINS TO BE MANUFACTURED OR SELECTED BY CONTRACTOR AND PRESENTED TO ENGINEER FOR ACCEPTANCE. ROOF DRAINS SHOULD PROVIDE REQUIRED OUTFLOW FROM THE ROOF STORAGE. SEE DETAIL 2.
 - EXISTING REMOVABLE BICYCLE CURB TO BE RELOCATED IN ACCORDANCE WITH THE CITY'S PLANS FOR THE BICYCLE LINE.



Storage Requirements

2-year	5.33 m ³
100-year	20.75 m ³

Stage-Storage

Depth m	Area m ²	Volume m ³
0.050	100.0	1.67
0.075	215.0	5.38
0.08	450.0	12.00
0.1105	569.0	20.96

Legend:

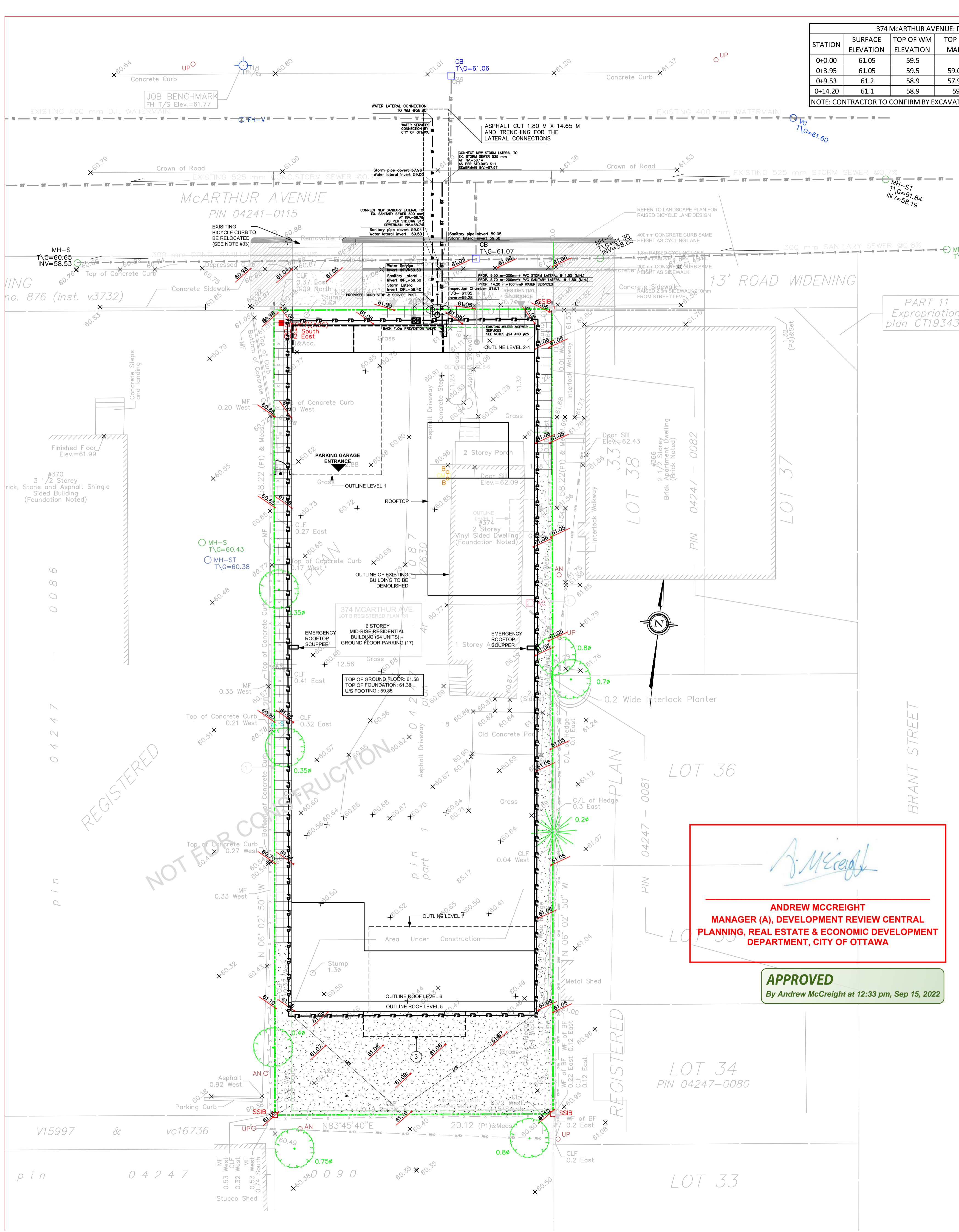
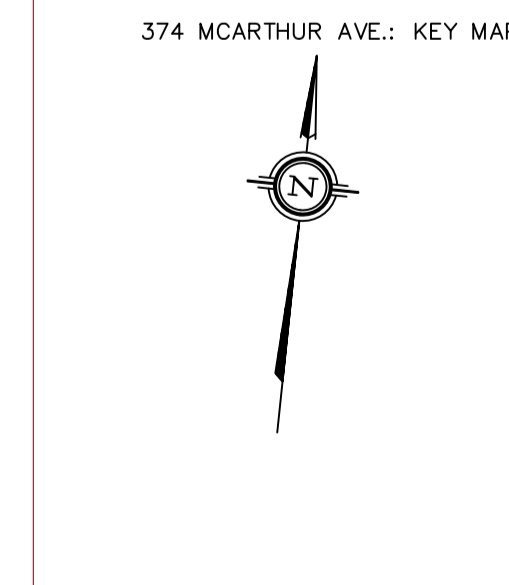
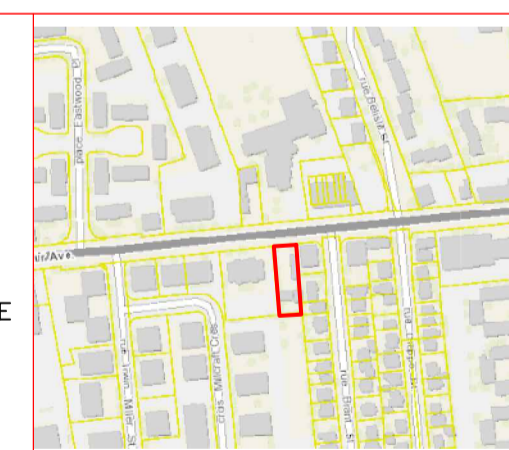
data for 2-year event
data for 100-year event

Notes:
Roof drains with controlled flow to be specified by manufacturer using the allowable flow rates presented in this chart

LEGEND

- 56.63 PROPOSED ELEVATION
- 57.87 EXISTING ELEVATION
- U/S FOOTING PROPOSED UNDERSIDE OF CONCRETE FOOTING ELEVATION
- W PROPOSED WATER SERVICES COPPER TYPE "K"
- FD PROPOSED PVC SANITARY LATERAL SERVICES @ 1% (MIN.) SLOPE
- FD PROPOSED FOUNDATION DRAINAGE
- FD PROPOSED PVC STORM SEWER
- P EXISTING UNDERGROUND POWER LINE/CONDUIT
- EXISTING CATCH BASIN
- EXISTING STORM MANHOLE
- EXISTING SANITARY MANHOLE
- EXISTING WATER VALVE
- EXISTING FIRE HYDRANT
- EXISTING UTILITY POLE
- PROPOSED CURB STOP & SERVICE POST
- PROPOSED METER & REMOTE METER
- ROOF DRAIN
- PROPERTY LINE
- D4 DRAIN

0 1 2 3 4 5 10 m



ANDREW MCCREIGHT
MANAGER (A), DEVELOPMENT REVIEW CENTRAL
PLANNING, REAL ESTATE & ECONOMIC DEVELOPMENT
DEPARTMENT, CITY OF OTTAWA

APPROVED
By Andrew McCreight at 12:33 pm, Sep 15, 2022

REGISTERED

NOT FOR CONSTRUCTION

pin 04247-0086

pin 04247-0087

pin 04247-0088

pin 04247-0089

pin 04247-0090

pin 04247-0091

pin 04247-0092

pin 04247-0093

pin 04247-0094

pin 04247-0095

pin 04247-0096

pin 04247-0097

pin 04247-0098

pin 04247-0099

pin 04247-0100

pin 04247-0101

pin 04247-0102

pin 04247-0103

pin 04247-0104

pin 04247-0105

pin 04247-0106

pin 04247-0107

pin 04247-0108

pin 04247-0109

pin 04247-0110

pin 04247-0111

pin 04247-0112

pin 04247-0113

pin 04247-0114

pin 04247-0115

pin 04247-0116

pin 04247-0117

pin 04247-0118

pin 04247-0119

pin 04247-0120

pin 04247-0121

pin 04247-0122

pin 04247-0123

pin 04247-0124

pin 04247-0125

pin 04247-0126

pin 04247-0127

pin 04247-0128

pin 04247-0129

pin 04247-0130

pin 04247-0131

pin 04247-0132

pin 04247-0133

pin 04247-0134

pin 04247-0135

pin 04247-0136

pin 04247-0137

pin 04247-0138

pin 04247-0139

pin 04247-0140

pin 04247-0141

pin 04247-0142

pin 04247-0143

pin 04247-0144

pin 04247-0145

pin 04247-0146

pin 04247-0147

pin 04247-0148

pin 04247-0149

pin 04247-0150

pin 04247-0151

pin 04247-0152

pin 04247-0153

pin 04247-0154

pin 04247-0155

pin 04247-0156

pin 04247-0157

pin 04247-0158

pin 04247-0159

pin 04247-0160

pin 04247-0161

pin 04247-0162

pin 04247-0163

pin 04247-0164

pin 04247-0165

pin 04247-0166

pin 04247-0167

pin 04247-0168

pin 04247-0169

pin 04247-0170

pin 04247-0171

pin 04247-0172

pin 04247-0173

pin 04247-0174

pin 04247-0175

pin 04247-0176

pin 04247-0177

pin 04247-0178

pin 04247-0179

pin 04247-0180

pin 04247-0181

pin 04247-0182

pin 04247-0183

pin 04247-0184

pin 04247-0185

pin 04247-0186

pin 04247-0187

pin 04247-0188

pin 04247-0189

pin 04247-0190

pin 04247-0191

pin 04247-0192

pin 04247-0193

pin 04247-0194

pin 04247-0195

pin 04247-0196

pin 04247-0197

pin 04247-0198

pin 04247-0199

pin 04247-0200

ARCH-NOVA Design Inc. 45 Banner Road NEPEAN ON K2H 8X5
613-702-3403 contact@archnova.ca

Servicing & Grading Plan

Location 374 MCARTHUR AVENUE, OTTAWA, ON

Owner

Project No CW-01-20

Date January 2022

Drawing No W-01

Scale 1:150

10.03.2022

2 MARCH

City of Ottawa File No: D07-12-26-0128

17016