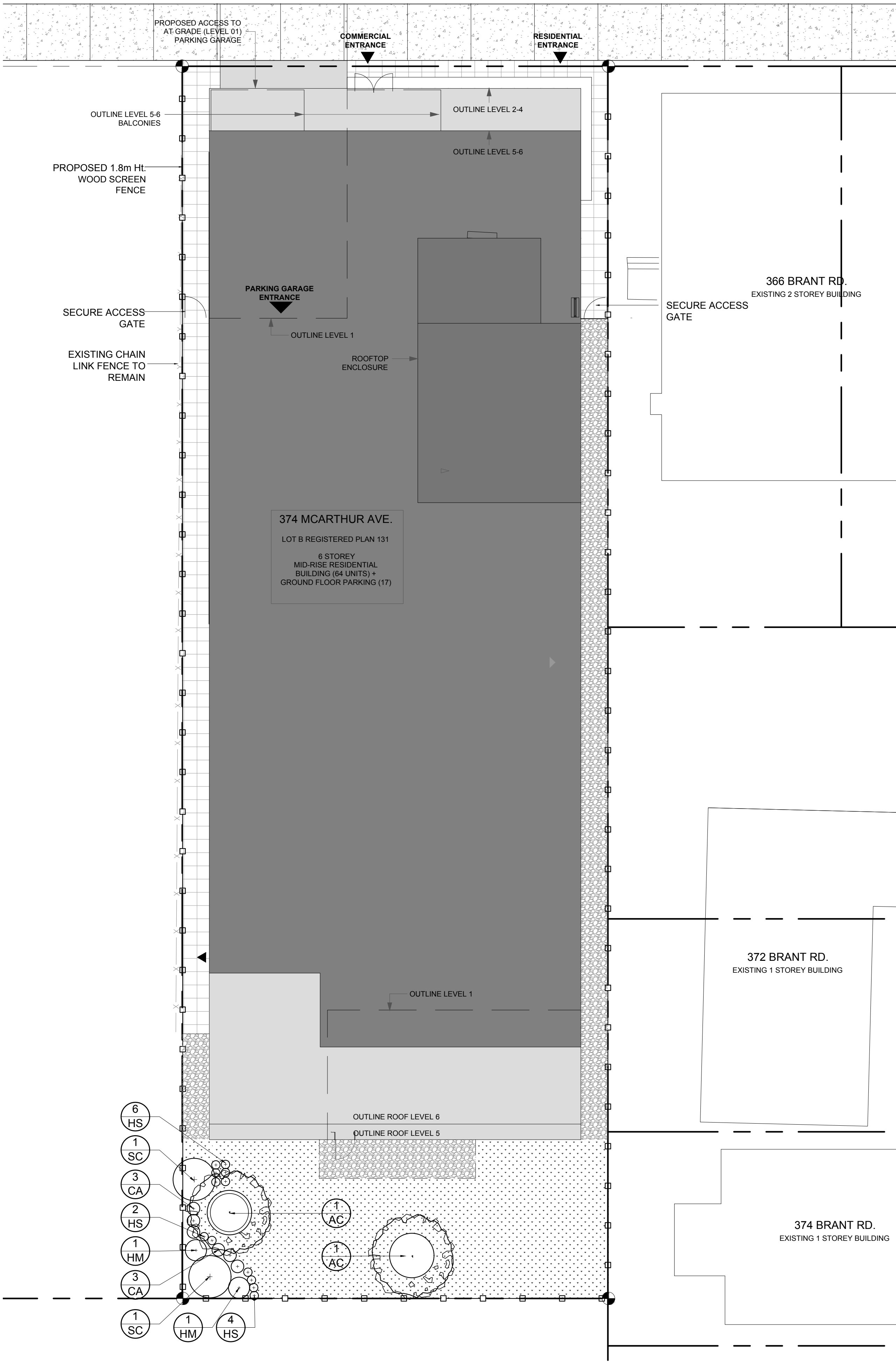
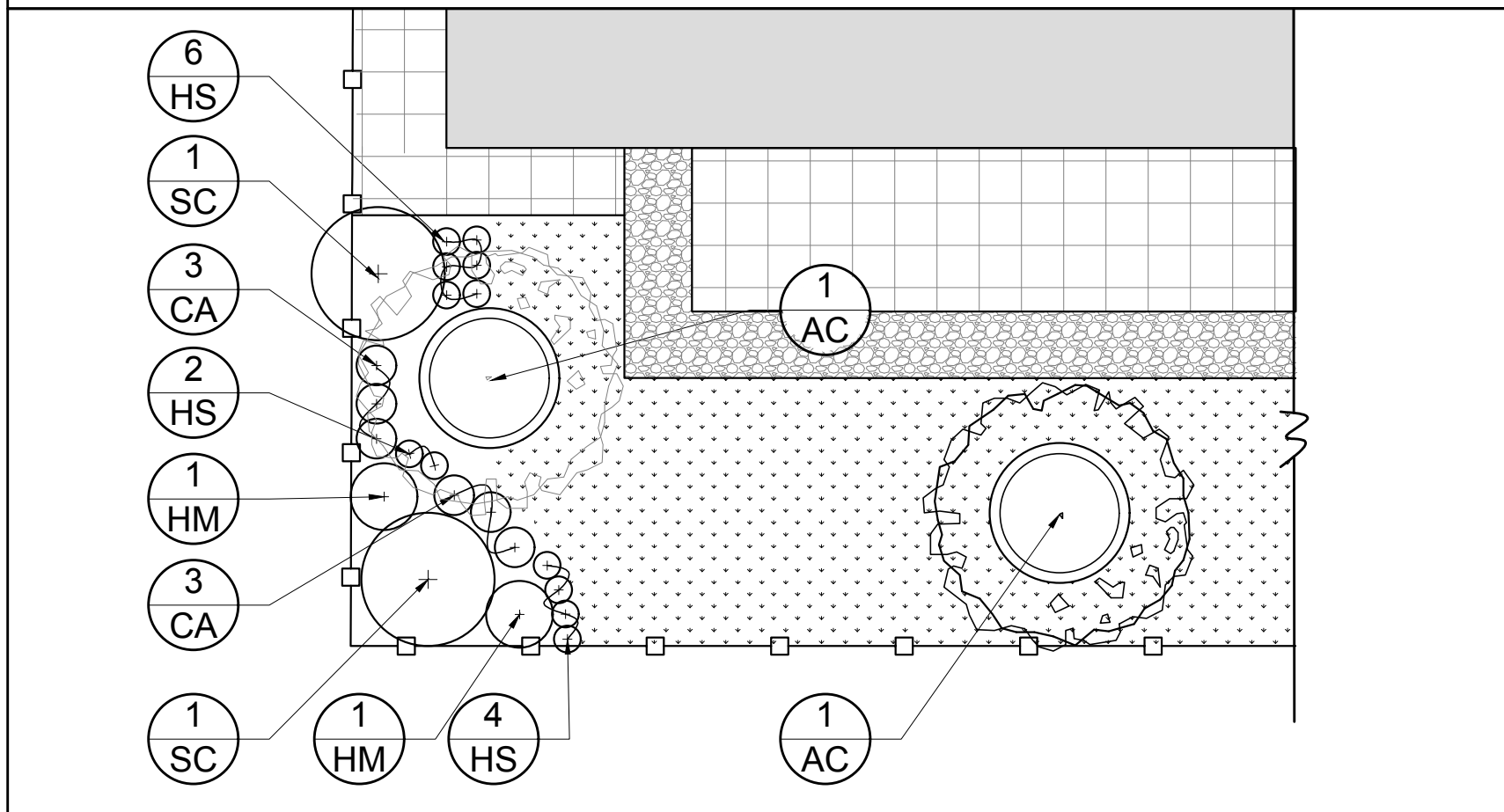


McARTHUR AVENUE

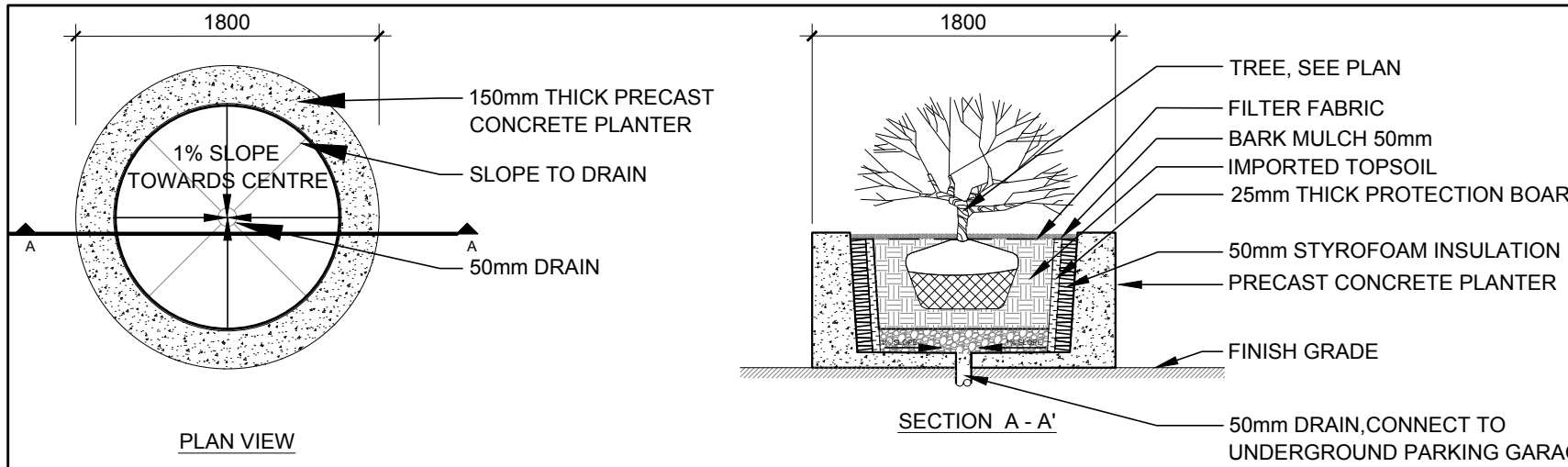


PROPOSED PLANT LIST (QTY KEY)

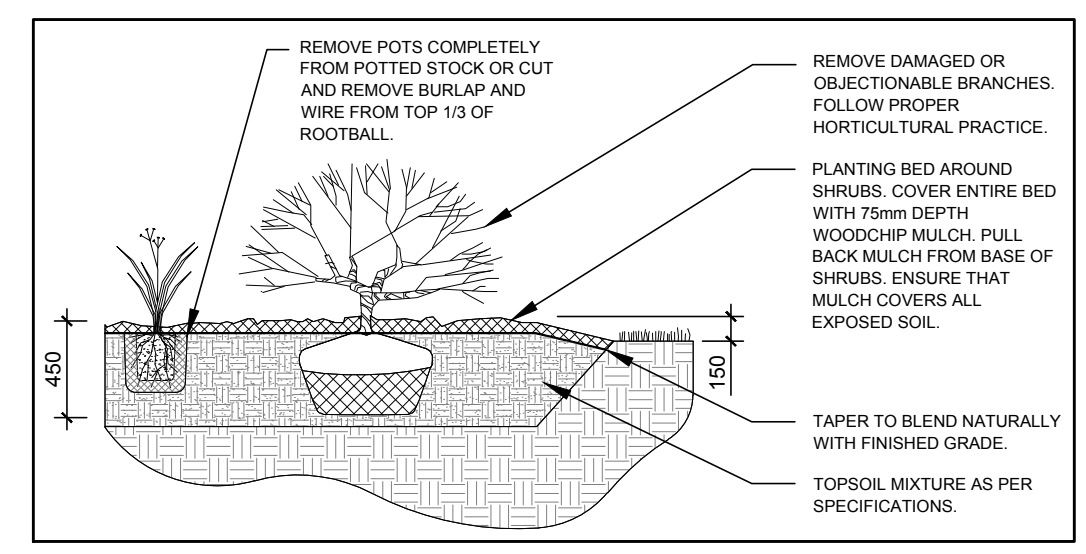
KEY	QTY	BOTANICAL NAME	COMMON NAME	SIZE	CONDITION	REMARKS
TREES						
AC	2	<i>Amelanchier canadensis</i>	Shadblow Serviceberry	60mm cal.	B&B	REFER TO PLAN. ONTARIO NATIVE
SHRUBS						
SC	2	<i>Sambucus canadensis</i>	American Elderberry	1 gal	POTTED	REFER TO PLAN. ONTARIO NATIVE
PERENNIALS						
CA	6	<i>Calamagrostis acutiflora</i>	Variegated Feather Reed Grass	1 gal	POTTED	600mm O.C
HM	2	<i>Hosta 'Minutemen'</i>	Minutemen Plantain Lily	1 gal	POTTED	REFER TO PLAN
HS	12	<i>Hemerocallis 'Mini Stella'</i>	Mini Stella Daylily	1 gal	POTTED	400mm O.C



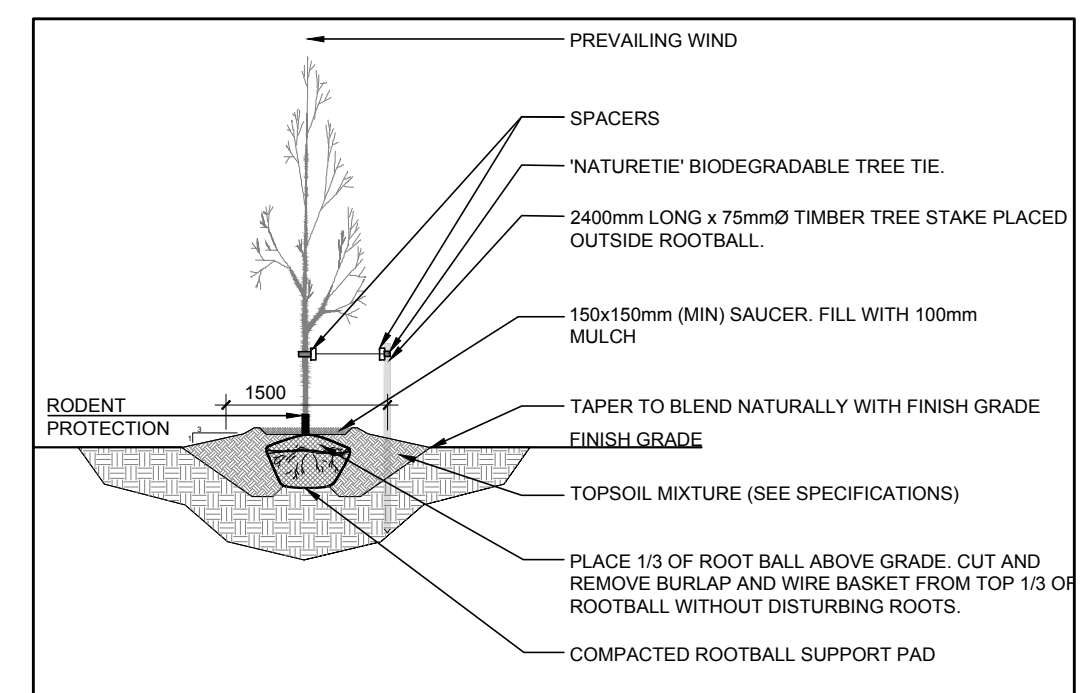
2 PERENNIAL AND TREE LOCATIONS
SCALE: 1:100



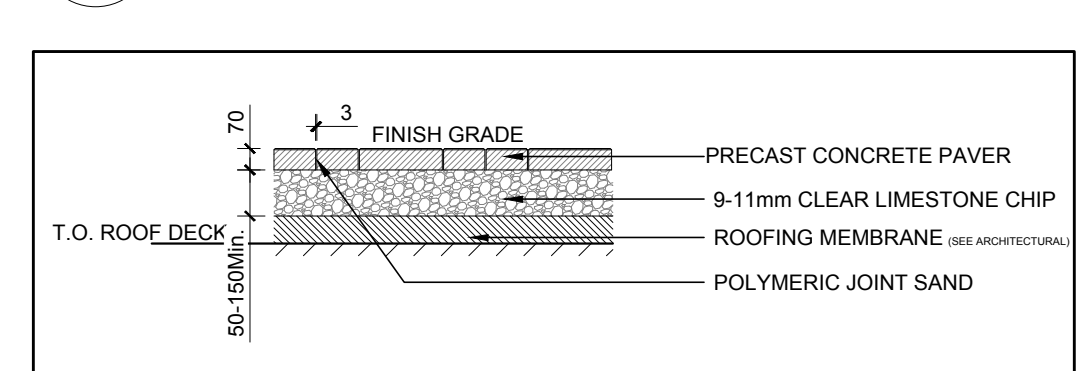
3 PRECAST CONCRETE PLANTER
SCALE: NTS



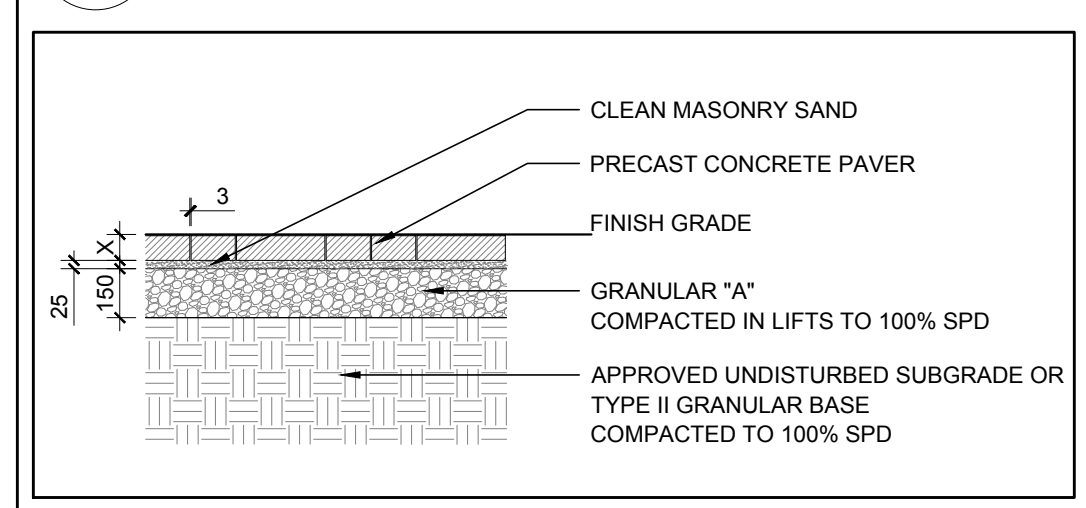
4 SHRUB AND PERENNIAL PLANTING
SCALE: NTS



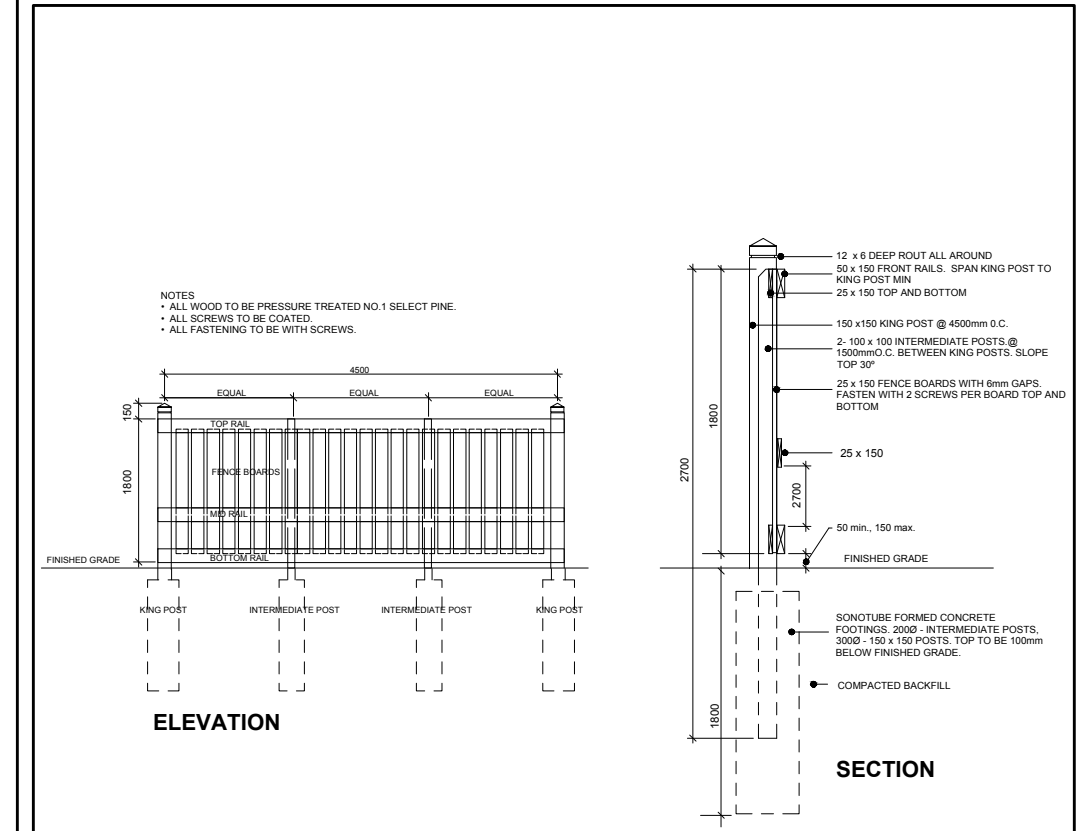
5 DECIDUOUS TREE PLANTING
SCALE: NTS



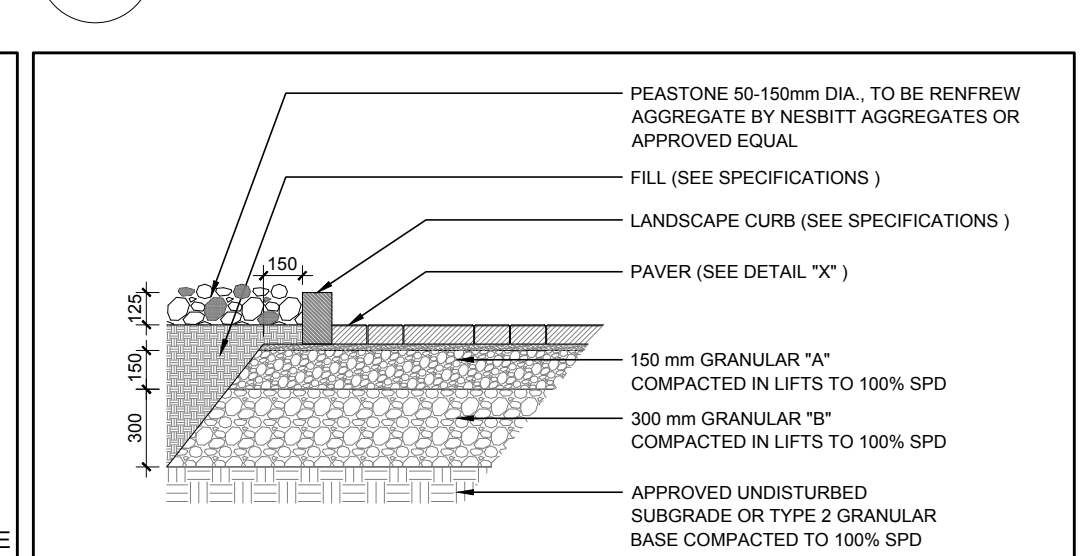
6 PRECAST CONCRETE PAVER ON ROOF
SCALE: NTS



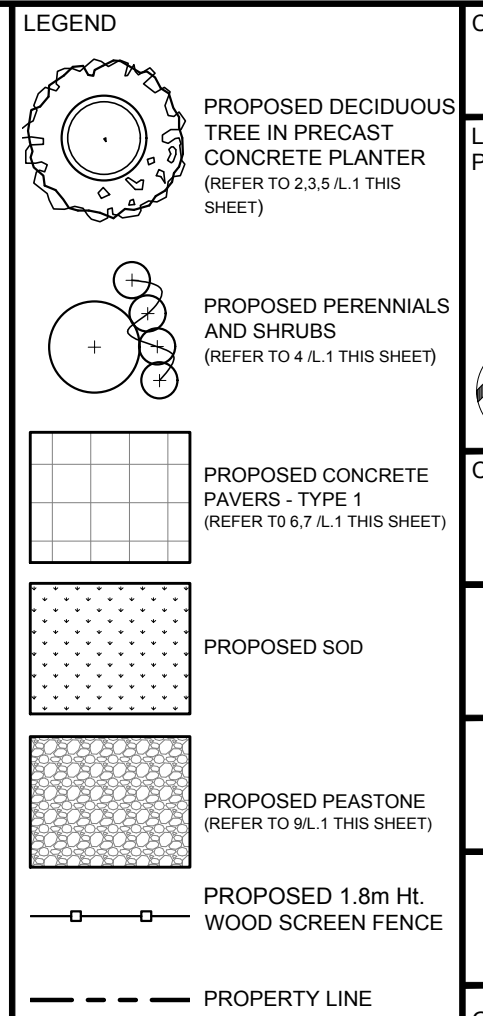
7 PRECAST CONCRETE PAVER
SCALE: NTS



8 1.8m Ht. WOOD SCREEN FENCE
SCALE: NTS



9 PEASTONE WITH MAINTENANCE EDGE
SCALE: NTS



CLIENT
374 McARTHUR INC.

LOCATION PLAN

CONSULTANTS
ARCHITECTS: **ROSSMANN ARCHITECTURE INC.**
88 BOLLIVARD SAINT-JOSEPH, GATINEAU QC
TEL: (819) 600-1600

SURVEYORS: **ANNIS, O' SULLIVAN, VOLLEBEK INC.**
14 CONCORSE GATE, SUITE 500, NEPEAN ON
TEL: (613) 727-0850

CIVIL ENGINEERS: **ARCH-NOVA DESIGN INC.**
45 BANNER RD, NEPEAN, ON
TEL: (613) 829-5722

PLANNER: **P.H. ROBINSON CONSULTING INC.**
100 PALOMINO DRIVE, OTTAWA ON
TEL: (613) 599-9216

- GENERAL NOTES**
- IT IS THE RESPONSIBILITY OF THE APPROPRIATE CONTRACTOR OR OFFICIAL TO REPORT ANY ERRORS, OMISSIONS OR DISCREPANCIES ON THIS PLAN WITH ACTUAL SITE CONDITIONS TO THE LANDSCAPE ARCHITECT BEFORE PROCEEDING WITH CONSTRUCTION.
 - THE CONTRACTOR IS TO NOTIFY ALL UTILITY COMPANIES AND AUTHORITIES PRIOR TO ANY EXCAVATION AND ASCERTAIN LOCATIONS OF UNDERGROUND SERVICES.
 - THE CONTRACTOR IS TO REINSTATE ALL AREAS AND ITEMS DAMAGED AS A RESULT OF CONSTRUCTION ACTIVITY.
 - THE CONTRACTOR IS TO COMPLY WITH ALL PERTINENT CODES AND BY-LAWS.
 - THE CONTRACTOR IS TO MAINTAIN A POSITIVE SURFACE RUN-OFF THROUGHOUT THE ENTIRE CONSTRUCTION PERIOD.
 - THE LANDSCAPE ARCHITECT IS NOT RESPONSIBLE FOR SUBSURFACE CONDITIONS.
 - THE CONTRACTOR IS TO IDENTIFY ALL EXISTING TREES TO REMAIN ON SITE WITH THE LANDSCAPE ARCHITECT PRIOR TO CONSTRUCTION.
 - THE CONTRACTOR IS TO STAKE THE PROPOSED LOCATION OF ALL PLANT MATERIAL IN CONJUNCTION WITH THE LANDSCAPE ARCHITECT PRIOR TO EXCAVATION.
 - MINIMUM DISTANCES FOR SELECTED DECIDUOUS TREES ARE AS FOLLOWS:
- BUILDING FOUNDATIONS 7.5M
- SIDEWALKS 1.5M
- PUBLIC STREETS 2.0M
- UNDERGROUND INFRASTRUCTURE 2.0M
 - ALL TREES WITHIN 1M OF UNDERGROUND UTILITY TRENCHES ARE TO BE EXCAVATED BY HAND.
 - REMOVE ALL PROTECTIVE WRAPPING FROM TREE TRUNKS AFTER INSTALLATION.
 - STAKING OF TREES SHALL ONLY BE PERFORMED IF NECESSARY.
 - ENSURE THAT MULCH IS PULLED BACK A MIN. DISTANCE OF 75MM FROM BASE OF TREE TRUNK.

No.	Issue	Date	Author	Check
5	REVISED PER NEW SITE PLAN	06/09/2021	ML	JL
4	REVISED PER NEW SITE PLAN	12/08/2020	ML	JL
3	REVISED PER NEW SITE PLAN	10/27/2020	ML	JL
2	ISSUED FOR UDRP REVIEW	07/08/2020	KS	JL
1	ISSUED FOR PRELIMINARY SITE PLAN	07/07/2020	KS	JL

JAMES B. LENNOX & ASSOCIATES INC.
LANDSCAPE ARCHITECTS
3332 CARLING AVE. OTTAWA, ONTARIO K2H 5A8
Tel. (613) 722-5168 Fax. (866) 343-3942

PROJECT
PROPOSED SIX STOREY MID-RISE RESIDENTIAL APARTMENT BUILDING
374 McARTHUR AVENUE
OTTAWA, ON

DRAWING
LANDSCAPE PLAN

STAMP

SCALE
AS SHOWN

START DATE
JUNE, 2020

PROJECT NO.
20 - MIS - 2046

TRUE NORTH

DRAWING NO.
L.1

PLOT SIZE ARCH-D

1 LANDSCAPE PLAN
SCALE 1:125