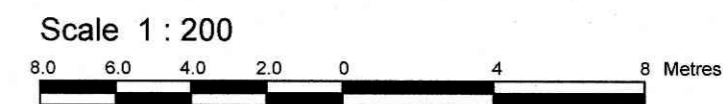


TOPOGRAPHIC PLAN OF SURVEY OF

**PART OF LOT B
REGISTERED PLAN 131
CITY OF OTTAWA**

Prepared by Annis, O'Sullivan, Vollebek Ltd.



Metric
DISTANCES SHOWN ON THIS PLAN ARE IN METRES AND CAN BE CONVERTED TO FEET BY DIVIDING BY 0.3048

Surveyor's Certificate

I CERTIFY THAT:
1. This survey and plan are correct and in accordance with the Surveys Act and the Surveyors Act and the regulations made under them.
2. The survey was completed on the 10th day of March, 2020.

Date: March 31/20
Andrew Schelp
Ontario Land Surveyor

Notes & Legend

	Denotes	Survey Monument Planted
		Survey Monument Found
		Standard Iron Bar
		Short Standard Iron Bar
		Iron Bar
		Plan 4R-27630
		(AOG) Plan October 3, 1995
		(AOG) Plan January 24, 1996
		Annis, O'Sullivan, Vollebek Ltd.
		Witness
		Accepted
		Maintenance Hole (Storm Sewer)
		Maintenance Hole (Sanitary)
		Valve Chamber (Watermain)
		Utility Pole
		Anchor
		Overhead Wires
		Catch Basin
		Fire Hydrant
		Top of Gate
		Top of Spindle
		Gas Meter
		Deciduous Tree
		Coniferous Tree
		Bollard
		Sign
		Chain Link Fence
		Metal Fence
		Board Fence
		Air Conditioner
		Diameter
		Location of Elevations
		Top of Concrete Curb Elevation
		Centreline
		West face
		Property Line

ASSOCIATION OF ONTARIO
LAND SURVEYORS
PLAN SUBMISSION FORM
2121816

THIS PLAN IS NOT VALID UNLESS IT IS AN EMBOSSED ORIGINAL COPY ISSUED BY THE SURVEYOR In accordance with Regulation 1026, Section 29 (3).

Bearings are grid bearings, derived from the southerly limit of McArthur Road shown to be N83°45'40"E and are referred to the Central Meridian of Zone 9 of the Ontario Coordinate System, Longitude 76°30' West (MTM NAD-83).

SITE AREA = 1171 m²

ELEVATION NOTES

- Elevations shown are referred to geodetic datum.
- It is the responsibility of the user of this information to verify that the job benchmark has not been altered or disturbed and that its relative elevation and description agrees with the information shown on this drawing.

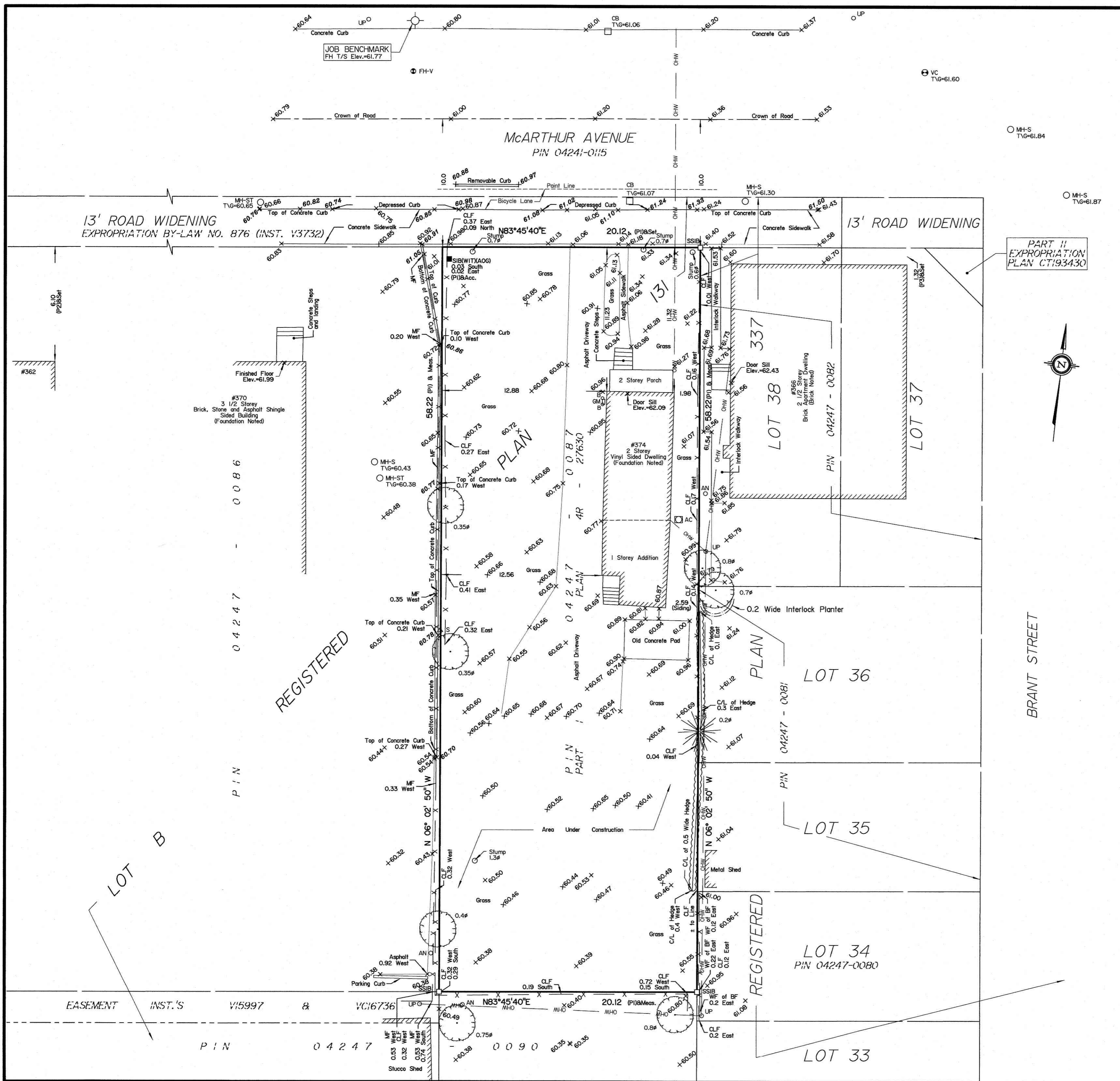
UTILITY NOTES

- This drawing cannot be accepted as acknowledging all of the utilities and it will be the responsibility of the user to contact the respective utility authorities for confirmation.
- Only visible surface utilities were located.
- A field location of underground plant by the pertinent utility authority is mandatory before any work involving breaking ground, probing, excavating etc.

© Annis, O'Sullivan, Vollebek Ltd., 2013. "THIS PLAN IS PROTECTED BY COPYRIGHT"

ANNIS, O'SULLIVAN, VOLLEBEK LTD.
14 Concourse Gate, Suite 500
Nepean, Ont. K2E 7S6
Phone: (613) 727-0850 / Fax: (613) 727-1079
Email: Nepean@aovltd.com

Ontario Land Surveyors Job No. 20195-20 PLIB PL131T D F FS



Y:\2020\20195-20\FINAL\20195-20 PLIB PL131T D F.dwg