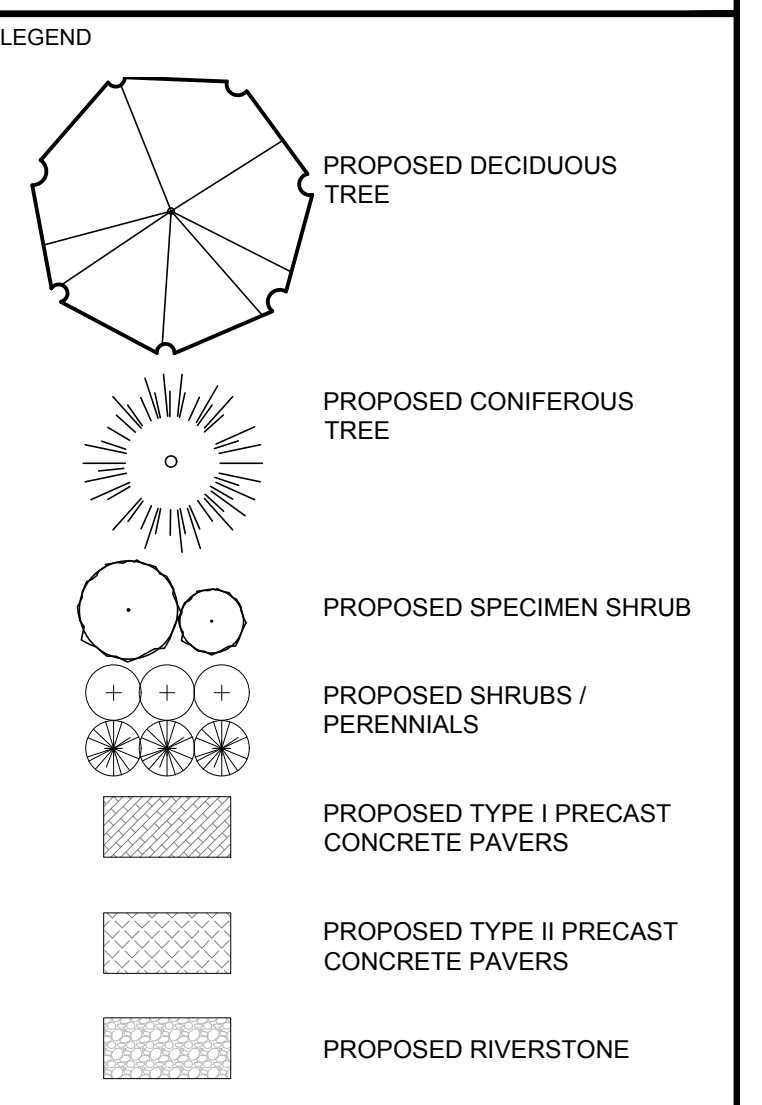


CLIENT:

CONSULTANTS  
 ARCHITECTS:  
**WOODMAN ARCHITECT ASSOCIATES LTD.**  
 4 BEECHWOOD AVE. UNIT 201 - OTTAWA, ON. K1L 1B9 - TEL: (613) 233-6030

SURVEYORS:  
**FARLEY, SMITH & DENIS SURVEYING LTD.**  
 ONTARIO LAND SURVEYORS  
 CANADA LANDS SURVEYORS  
 190 COLONNADE ROAD, OTTAWA, ONTARIO K2E 7J5  
 PHONE: (613) 727-8226 - FAX: (613) 727-1823



6	REVISED PER NEW CIVIL DRAWING	03/18/2022	ML	JL
5	REVISED PER NEW SITE PLAN	03/04/2022	ML	JL
4	ISSUED FOR CLIENT DISCUSSION	01/31/2022	ML	JL
3	ISSUED FOR CLIENT DISCUSSION	11/24/2021	LC	JL
2	ISSUED FOR CLIENT DISCUSSION	07/21/2021	WF	JL
1	ISSUED FOR CLIENT DISCUSSION	05/11/2021	AF	JL
No.	Issue	Date		
		mm/dd/yyyy	DR	CK

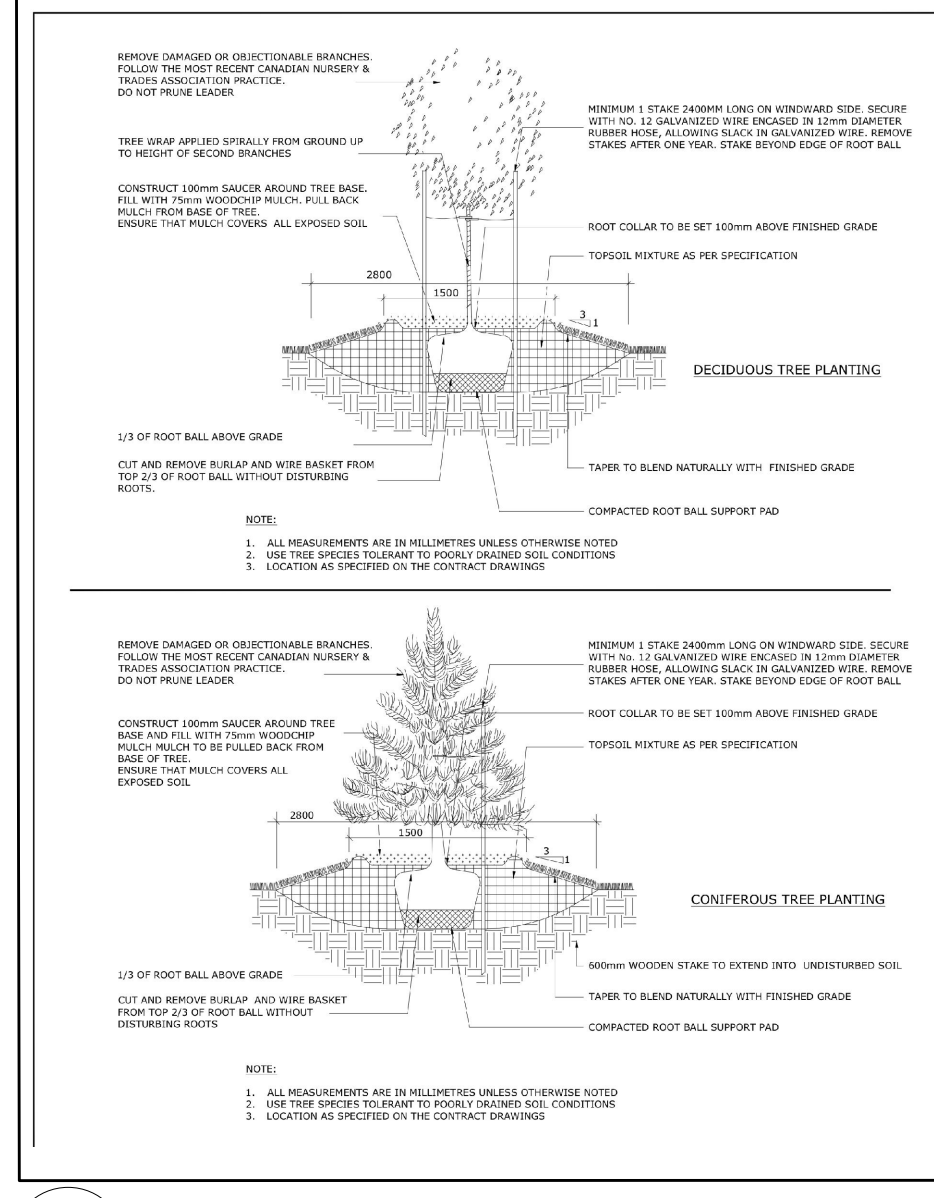
**JAMES B. LENNOX & ASSOCIATES INC.**  
 LANDSCAPE ARCHITECTS  
 3332 CARLING AVE. OTTAWA, ONTARIO K2H 5A8  
 Tel. (613) 722-5168 Fax. (613) 722-5162

1 LANDSCAPE PLAN  
 L.1 SCALE 1:125

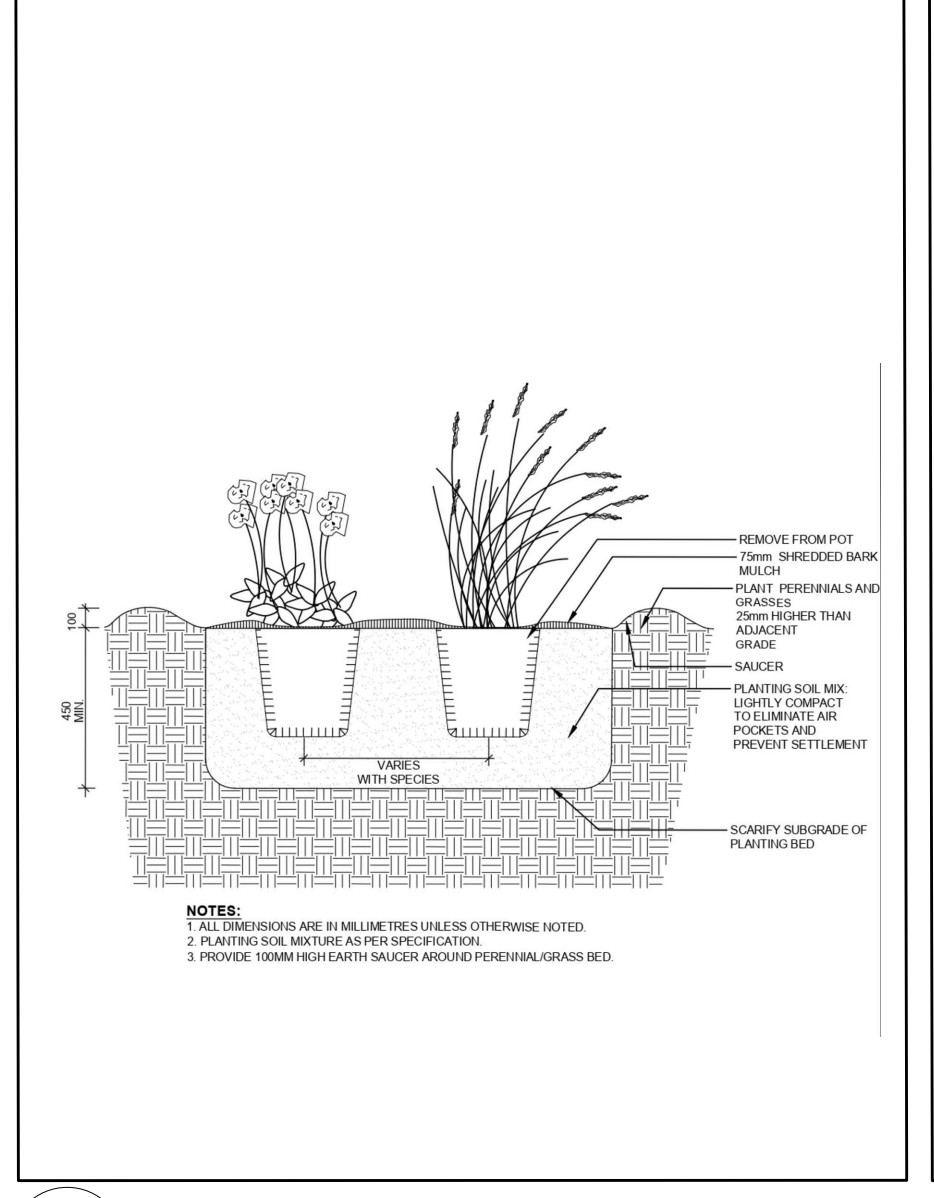
- GENERAL NOTES:**
- It is the responsibility of the appropriate contractor or official to report any errors, omissions or discrepancies on this plan with actual site conditions to the Landscape Architect before proceeding with construction.
  - The contractor is to notify all utility companies and authorities prior to any excavation and ascertain locations of underground services.
  - The contractor is to reinstate all areas and items damaged as a result of construction activity.
  - The contractor is to comply with all pertinent codes and by-laws.
  - The contractor is to maintain a positive surface run-off throughout the entire construction period.
  - The Landscape Architect is not responsible for subsurface conditions.
  - The contractor is to identify all existing trees to remain on site with the Landscape Architect prior to construction.
  - The contractor is to stake the proposed location of all plant material in conjunction with the Landscape Architect prior to excavation.
  - Minimum distances for selected deciduous trees are as follows:
    - Building Foundations 7.5m
    - Sidewalks 1.5m
    - Public Streets 2.5m
    - Underground Infrastructure 2.0m
  - All trees within 1m of underground utility trenches are to be excavated by hand.
  - Remove all protective wrapping from tree trunks after installation.
  - Staking of trees shall only be performed if necessary.
  - Ensure that mulch is pulled back a min. distance of 75mm from base of tree trunk.

**PROPOSED PLANT LIST** QTY KEY O/C = ON CENTRE

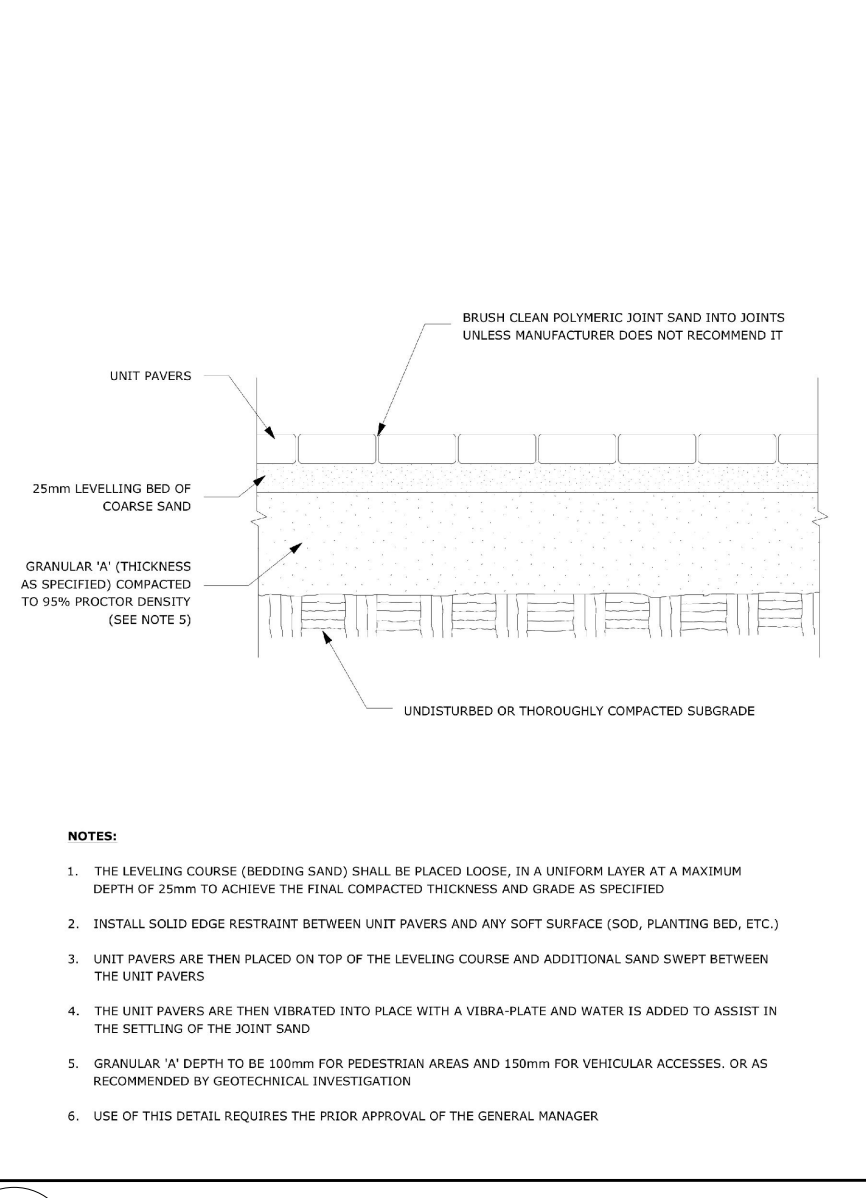
KEY	QTY	BOTANICAL NAME	COMMON NAME	SIZE	CONDITION	REMARKS
<b>TREES</b>						
AM	1	<i>Acer ginnala</i> 'Multi-Stem'	Multi-Stem Amur Maple	60mm CAL.	B&B	3 trunks or more
JL	4	<i>Syringa reticulata</i>	Japanese Tree Lilac	60mm CAL.	B&B	Tree form
SB	6	<i>Amelanchier canadensis</i>	Serviceberry	60mm CAL.	B&B	Tree form
SS	2	<i>Picea omorika</i>	Serbian Spruce	1800mm HT	B&B	
WC	2	<i>Thuja occidentalis</i> 'Clumps'	White Cedar Clumps	1800mm HT	B&B	3 trunks or more
<b>SHRUBS</b>						
AH	28	<i>Hydrangea arborescens</i> 'Annabelle'	Annabelle Hydrangea	3 GALLON POT	POTTED	800 mm O/C
AW	25	<i>Spiraea x bumalda</i> 'Anthony Waterer'	Anthony Waterer Spirea	600mm HT.	POTTED	1000mm O/C
BB	16	<i>Berberis thunbergii</i> 'Concorde'	Concorde Barberry	2 GALLON POT	POTTED	1000mm O/C
BH	27	<i>Juniperus horizontalis</i> 'Bar Harbor'	Bar Harbor Juniper	600 mm SPR.	POTTED	800 mm O/C
GS	4	<i>Spiraea x arguta</i>	Garland Spirea	800mm HT.	POTTED	800 mm O/C
MP	1	<i>Pinus mugo</i>	Mugo Pine	1000mm HT.	POTTED	800 mm O/C
SE	95	<i>Sorbaria sorbifolia</i> 'Sem'	Sem False Spirea	600mm HT.	POTTED	1200 mm O/C
SV	21	<i>Taxus x media</i> 'Dani'sformis'	Spreading Yew	1000mm HT.	POTTED	1200 mm O/C
YE	14	<i>Taxus x media</i> 'Hicksii'	Hicks's Yew	1000mm HT.	POTTED	1200 mm O/C
<b>PERENNIALS AND ORNAMENTAL GRASSES</b>						
AJ	96	<i>Sedum 'Autumn Joy'</i>	Autumn Joy Sedum	100mm POT	POTTED	500 mm O/C
CB	131	<i>Heuchera 'Plum pudding'</i>	Plum Pudding Coral Bells	150mm POT	POTTED	400 mm O/C
DL	219	<i>Hemerocallis 'Stella D'Oro'</i>	Stella D'Oro Day Lily	150mm POT	POTTED	300 mm O/C
OF	27	<i>Matteuccia struthiopteris</i>	Ostrich Fern	250mm POT	POTTED	800 mm O/C
PW	72	<i>Vinca minor</i>	Periwinkle	Cell plug	Cell pack	300 mm O/C
RG	32	<i>Phalaris arundinacea</i> 'Strawberries & Cream'	Strawberries & Cream Ribbon Grass	250mm POT	POTTED	600 mm O/C



2 DECIDUOUS & CONIFEROUS TREE PLANTING  
 L.1 SCALE:NTS



3 SHRUB / PERENNIAL PLANTING  
 L.1 SCALE:NTS

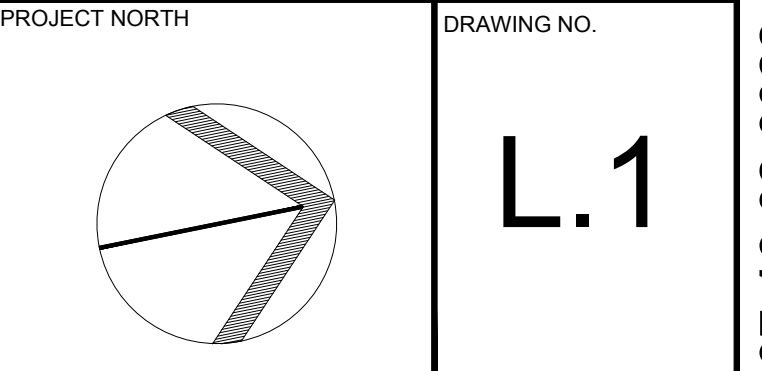


4 PRECAST CONCRETE PAVERS  
 L.1 SCALE:NTS

PROJECT  
 RESIDENTIAL DEVELOPMENT  
 229 & 241 BEECHWOOD AVE, OTTAWA ON

DRAWING  
 LANDSCAPE PLAN

SCALE	AS SHOWN
START DATE	MAY 2021
PROJECT NO.	20SM21054
DRAWING NO.	L.1



D07-16-08-00022