

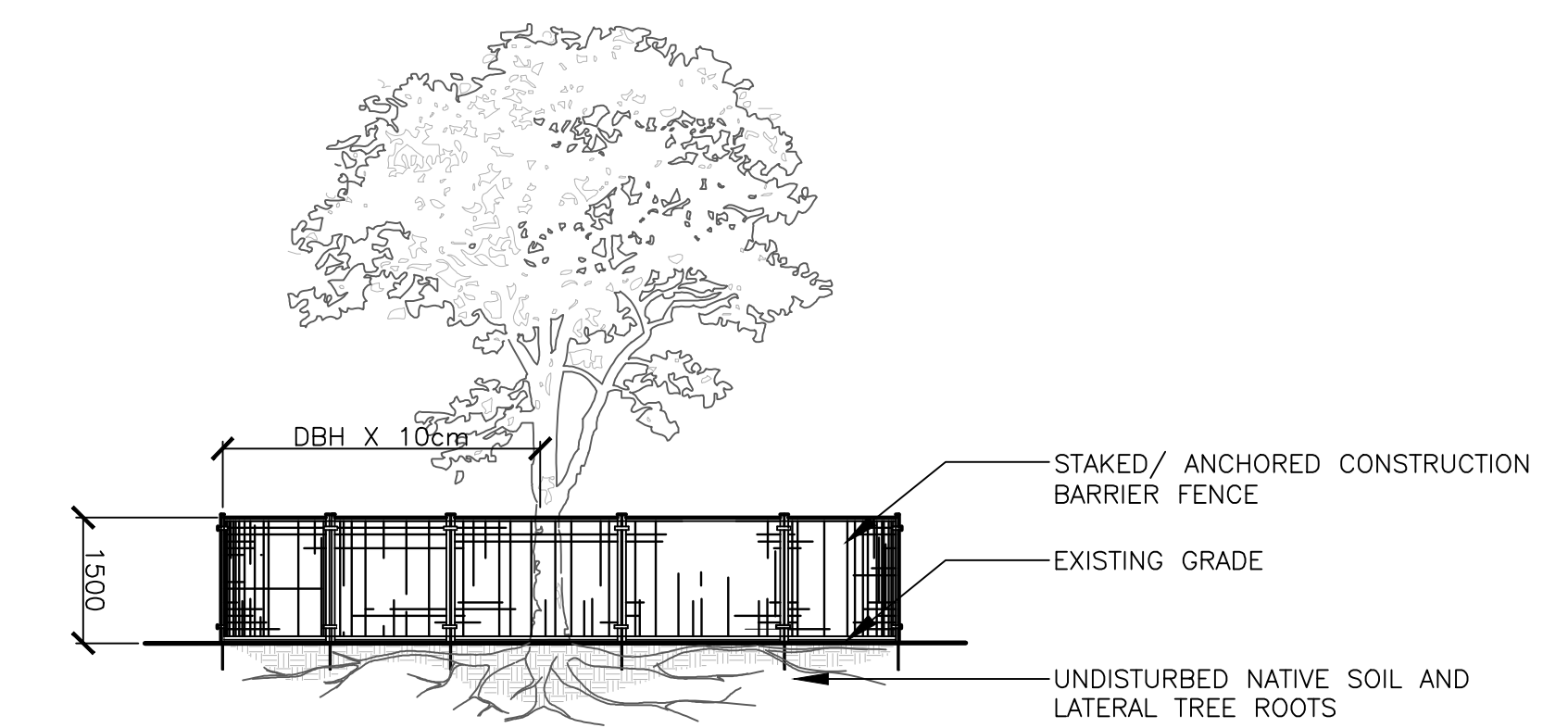
**GENERAL NOTES**

- CONTRACTOR SHALL VERIFY ALL DIMENSIONS ON SITE AND SHALL REPORT ANY DISCREPANCIES TO THE LANDSCAPE ARCHITECT PRIOR TO COMMENCEMENT OF WORK.
- CONTRACTOR MUST COMPLY WITH ALL CODES AND BYLAWS AND OTHER REGULATIONS BY AUTHORITIES HAVING JURISDICTION OVER THE WORK.
- DO NOT SCALE THIS DRAWING.
- THIS DRAWING MAY NOT BE USED FOR CONSTRUCTION UNLESS SIGNED BY THE LANDSCAPE ARCHITECT.
- COPYRIGHT OF THIS DRAWING IS RESERVED.

**C S W**

Landscape Architecture  
Urban Design  
Site Planning  
Recreation and Park Planning  
Project Management

319 McRae Avenue, Suite 502, Ottawa, Ontario, K1Z 0B9  
Tel: (613) 729-4536

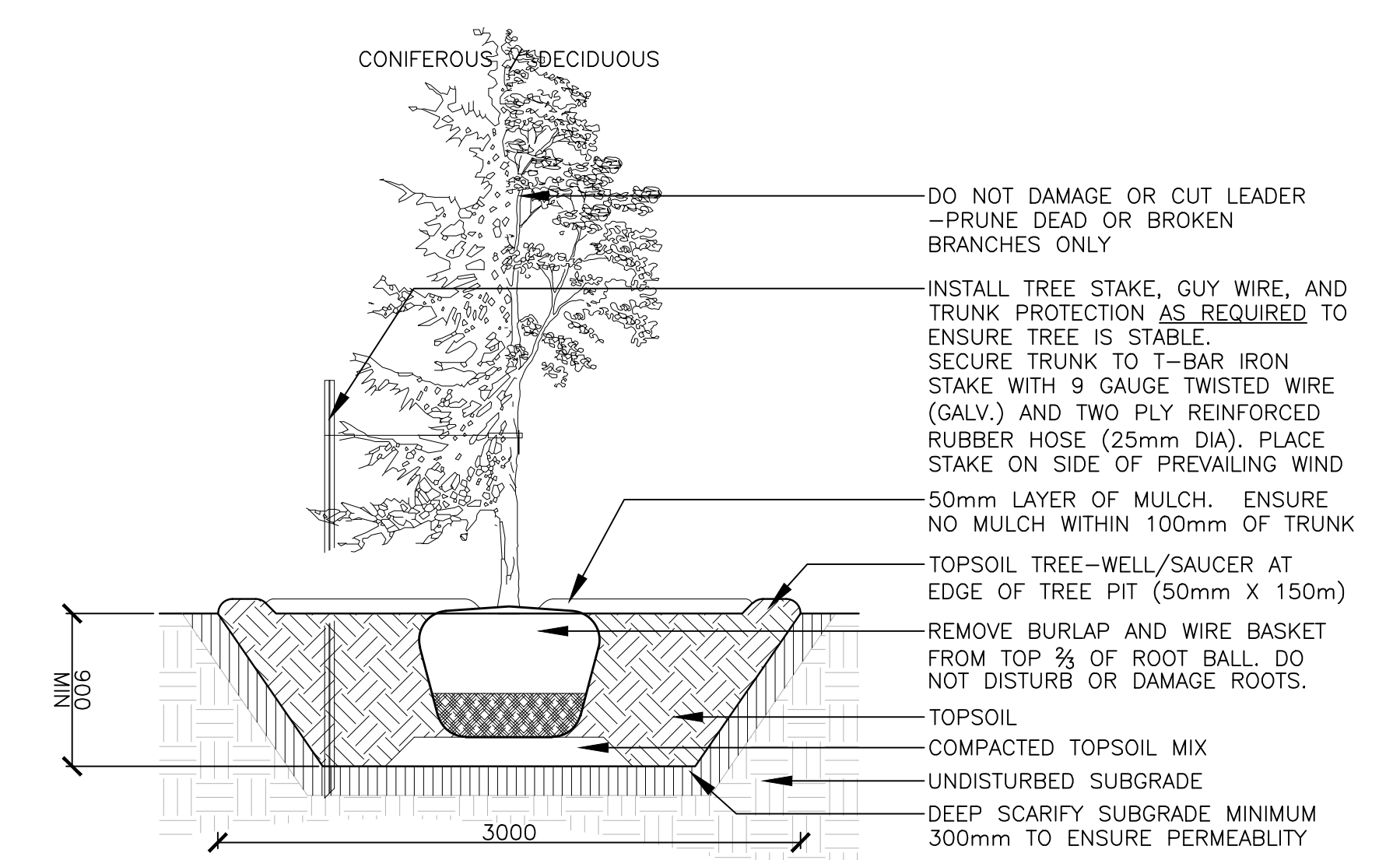


**NOTES:**

THE FOLLOWING PROTECTION MEASURES MUST BE IMPLEMENTED FOR RETAINED TREES, BOTH ON SITE AND ADJACENT SITES, PRIOR TO ANY TREE REMOVAL OR SITE WORKS AND MAINTAINED FOR THE DURATION OF CONSTRUCTION ON SITE.

- UNDER THE GUIDANCE OF AN ARBORIST, ERECT A FENCE AT THE CRITICAL ROOT ZONE (CRZ) OF TREES WHERE THE CRZ IS ESTABLISHED AS BEING 10 CENTIMETERS FROM THE TRUNK FOR EVERY CENTIMETER OF TRUNK DIAMETER AT BREAST HEIGHT. THE CRZ IS CALCULATED AS DBH X 10cm.
- DO NOT PLACE ANY MATERIAL OR EQUIPMENT WITHIN THE CRZ OF THE TREE
- DO NOT ATTACH ANY SIGNS NOTICES OR POSTERS TO ANY TREE
- DO NOT RAISE OR LOWER THE GRADE WITHIN THE CRZ WITHOUT APPROVAL
- TUNNEL OR BORE WHEN DIGGING WITHIN THE CRZ OF A TREE
- DO NOT DAMAGE THE ROOT SYSTEM, TRUNK, OR BRANCHES OF ANY TREE
- ENSURE THAT EXHAUST FUMES FROM ALL EQUIPMENT ARE NOT DIRECTED TOWARDS ANY TREE CANOPY

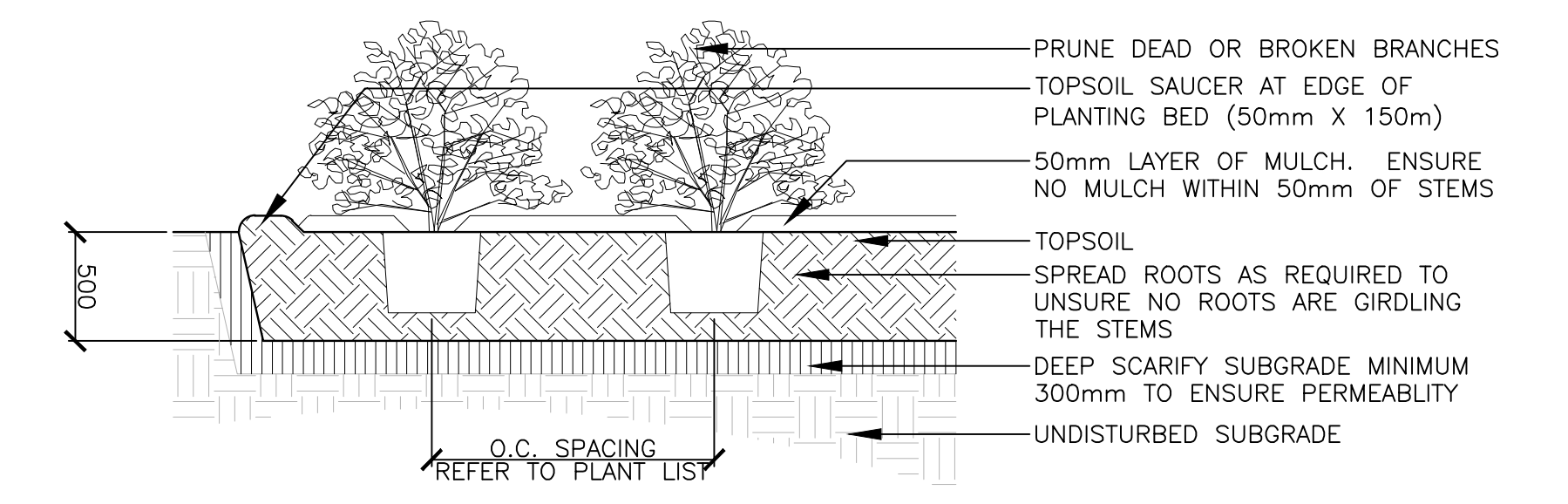
2 TREE PROTECTION FENCING Scale: N.T.S



**NOTES:**

- TREE STAKES ARE GENERALLY ARE TO BE USED FOR CONDITIONS WHERE THE INSTALLED TREE IS UNSTABLE AND/OR BECOMES UNSTABLE.
- ALLOW 10mm TO 25mm SLACK ON GUY WIRE SUPPORT FOR TREE
- TOP OF ROOT BALL TO RETAIN SAME ELEVATION AS GROWING CONDITIONS
- REMOVE STAKES ONE YEAR AFTER INSTALL
- INSTALL STAKE BEYOND EDGE OF ROOT BALL

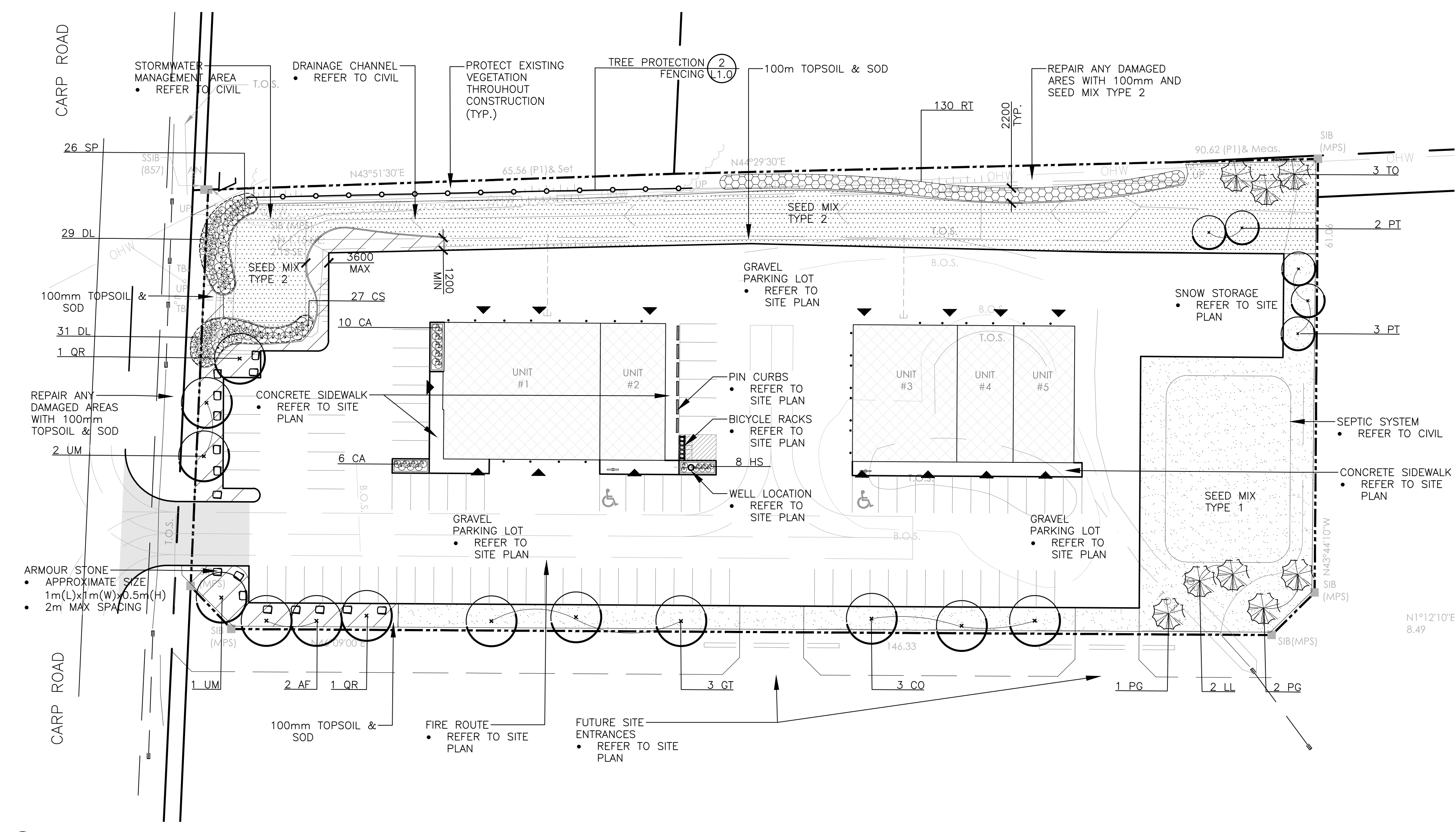
3 TREE PLANTING Scale: 1:30



**NOTES:**

- TOP OF ROOT BALL TO RETAIN SAME ELEVATION AS GROWING CONDITIONS

3 SHRUB / PERENNIAL PLANTING Scale: 1:30



1 LAYOUT Scale: 1:400

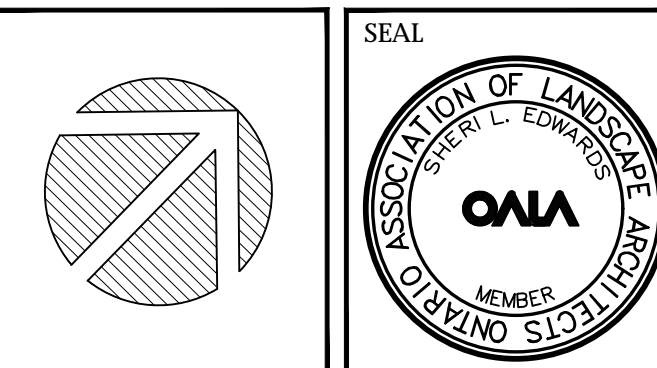
PLANT LIST					
SYM.	BOTANICAL NAME	COMMON NAME	QTY.	SIZE	REMARKS
<b>DECIDUOUS TREES</b>					
AF	ACER FREEMANII 'CELZAM'	CELEBRATION MAPLE	2	70mm CAL.	B&B / W.B.
CO	CELTIS OCCIDENTALIS	HACKBERRY	3	60mm CAL.	B&B / W.B.
GT	GLEDITSIA TRACANTHOS VAR. NERM. 'SHADEMASTER'	SHADEMASTER HONEY LOCUST	3	60mm CAL.	B&B / W.B.
PT	POPULUS TREMULOIDES	TREMBLING ASPEN	5	40mm CAL.	B&B / W.B.
QR	QUERCUS RUBRA	RED OAK	2	70mm CAL.	B&B / W.B. PLANT IN SPRING
UM	ULMUS 'MORTON'	ACCOLADE ELM	3	70mm CAL.	B&B / W.B. PLANT IN SPRING
<b>CONIFEROUS TREES</b>					
LL	LARIX LARICENA	TAMARACK	2	3000mm HT.	B&B / W.B.
PG	PICEA GLAUCA	WHITE SPRUCE	3	2500mm HT.	B&B / W.B.
TO	THUJA OCCIDENTALIS	EASTERN WHITE CEDAR	3	2000mm HT.	B&B / W.B.
<b>SHRUBS</b>					
CS	CORNUS SERICEA	RED-OSIER DOGWOOD	27	800mm HT.	POT. 1000mm O.C.
DL	DIERVILLA LONICERA	BUSH HONEYSUCKLE	60	600mm HT.	POT. 750mm O.C.
SP	SALIX PURPURA 'NANA'	DWARF ARCTIC WILLOW	26	600mm HT.	POT. 750mm O.C.
RT	RHUS TYPHINA	STAGHORN SUMAC	130	600mm HT.	POT. 1000mm O.C.
<b>ORNAMENTAL GRASS &amp; PERENNIALS</b>					
CA	CALAMAGROSTIS ACUTIFLORA 'KARL FOERSTER'	FEATHER REED GRASS	16	500mm HT.	POT. 600mm O.C.
HS	HEMEROCALLIS 'STELLA D'ORO'	STELLA D'ORO DAYLILY	8	1 GAL.	POT. 600mm O.C.

LEGEND	
	PROPERTY LINE
	TREE PROTECTION FENCING
	PROPOSED DECIDUOUS TREE
	PROPOSED CONIFEROUS TREE
	PROPOSED SHRUB
	PROPOSED ORNAMENTAL GRASS / PERENNIAL
	100mm TOPSOIL & SOD
	SEED MIX TYPE 1
	SEED MIX TYPE 2

**SEED MIXES**

- SEED MIX TYPE 1: STANDARD ROADSIDE MIX, PER OPSS 804
- SEED MIX TYPE 2: STORMWATER POND NATIVE SEED MIXTURE 8190, BY OSC SEEDS

NO.	ISSUE	DATE
1	ISSUED FOR SPA	20/11/16



**A+** architecture

**A+ Architecture Inc.**  
555 LEGGET DRIVE  
TOWER A, SUITE 304  
KANATA, ON K2K 2X3  
+1 613 699 6880  
info@aplus-arch.com  
www.aplus-arch.com

**CLIENT**

**2513287 ONTARIO INC.**  
87 WHEATSTONE CRESCENT  
OTTAWA, ONTARIO; K2G 7C4

**PROJECT**

**NEW MULTI-TENANT COMMERCIAL BUILDINGS**  
2822 CARP ROAD, CARP, ON

**DRAWING TITLE**

**LANDSCAPE PLAN**

DRAWN BY	PG	DRAWING NO.
REVIEWED BY	SE	L 1.0
DATE	2020/11/16	
PROJECT NO.	2079-01	REVISION NO.