

**SURVEYOR'S REAL PROPERTY REPORT**  
**PART 1** Plan of  
**PART OF LOT 9**  
**CONCESSION 2**  
**Geographical Township of Huntley**  
**CITY OF OTTAWA**  
 Surveyed by Annis, O'Sullivan, Vollebek Ltd.

Scale 1 : 300

Metric  
 DISTANCES SHOWN ON THIS PLAN ARE IN METRES AND  
 CAN BE CONVERTED TO FEET BY DIVIDING BY 0.3048

**Surveyor's Certificate**  
 I CERTIFY THAT:  
 1. This survey and plan are correct and in accordance with the Surveys Act, the Surveyors Act and the Land Titles Act and the regulations made under them.  
 2. The survey was completed on the 20th day of August, 2018.

Date: Sept 4, 2018  
  
 E. H. Henveyer  
 Ontario Land Surveyor

**PART 2**  
 THIS PLAN MUST BE READ IN CONJUNCTION WITH  
 SURVEY REPORT DATED: SEPTEMBER 4, 2018

ANNIS O'SULLIVAN VOLLEBEK LTD. grants to  
 2513287 ONTARIO INC. ("The Client"), their solicitors,  
 mortgagees, and other related parties, permission to use original, signed, sealed  
 copies of the Surveyor's Real Property Report in transactions involving The Client.

**Notes & Legend**

Denotes	
	Survey Monument Planted
	Survey Monument Found
SIB	Standard Iron Bar
SSIB	Short Standard Iron Bar
IB	Iron Bar
(WIT)	Witness
Meas.	Measured
(AOG)	Annis, O'Sullivan, Vollebek Ltd.
(PI)	Plan 4R-30382
OHW	Overhead Wires
O UP	Utility Pole
AN	Anchor
TB-B	Bell Terminal Box
CSP	Corrugated Steel Pipe
CPP	Corrugated Plastic Pipe
Ø	Diameter
+ 65.00	Location of Elevations
T/P	Top of Pipe
Inv.	Invert
C/L	Centreline
	Property Line
MF	Metal Fence

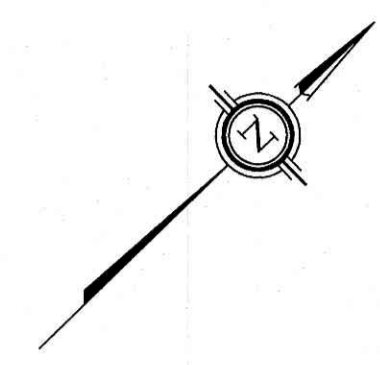
All bearing and distances between found survey monuments are  
 (P1) Meas unless otherwise noted.

Bearings are grid, derived from the southwesterly limit of Part 1  
 Plan 4R-30382 shown to be N41°38'40"W thereon and are referred to  
 the Central Meridian of MTM Zone 9 (76°30' West Longitude)  
 NAD-83 (original).

ASSOCIATION OF ONTARIO  
 LAND SURVEYORS  
 PLAN SUBMISSION FORM  
**2058320**  
  
 THIS PLAN IS NOT VALID UNLESS  
 IT IS AN EMBOSSED ORIGINAL  
 COPY ISSUED BY THE SURVEYOR  
 in accordance with  
 Regulation 1026, Section 29 (3).

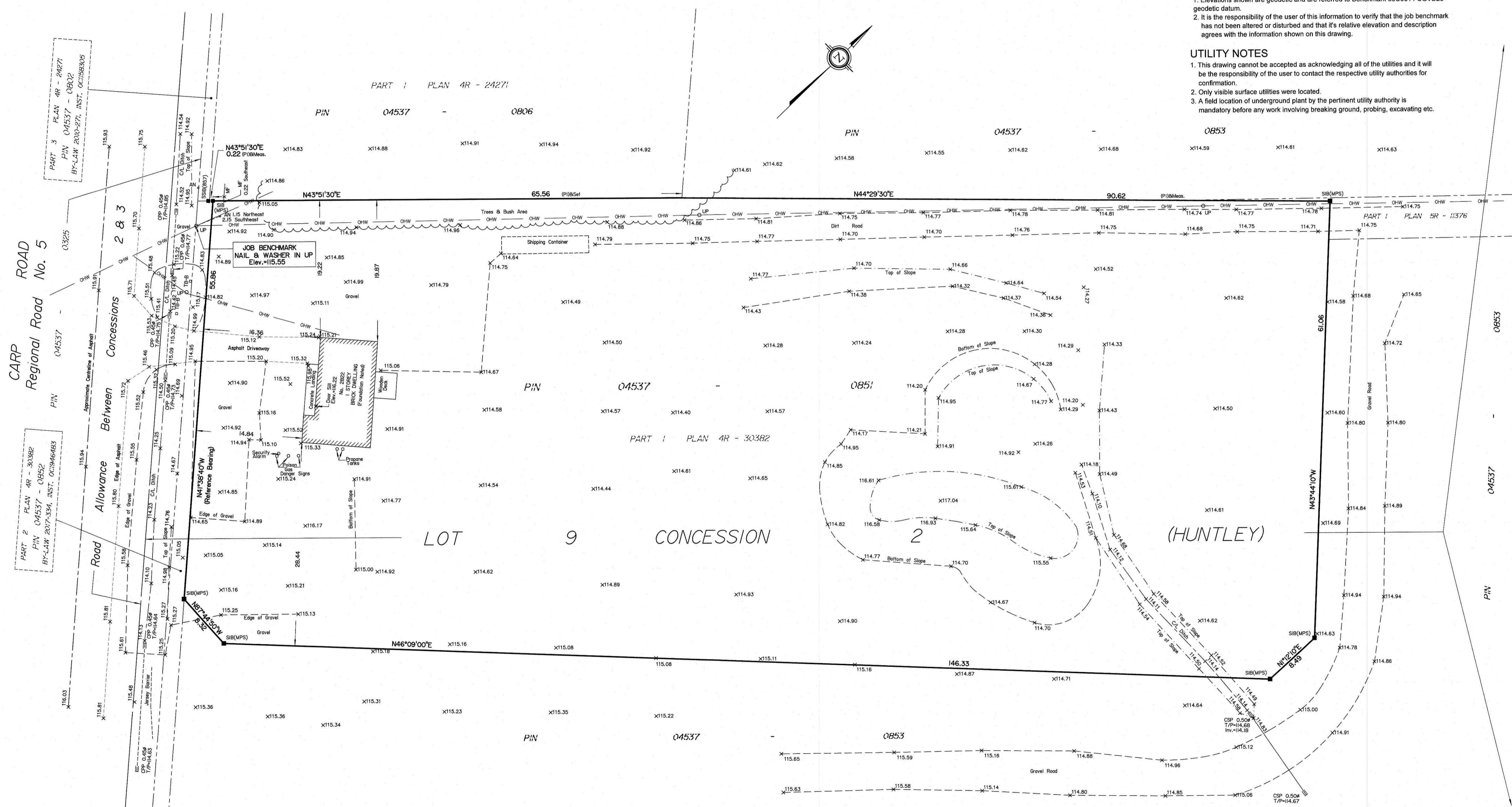
**ELEVATION NOTES**  
 1. Elevations shown are geodetic and are referred to Benchmark 68U001 / CGVD28 geodetic datum.  
 2. It is the responsibility of the user of this information to verify that the job benchmark has not been altered or disturbed and that its relative elevation and description agrees with the information shown on this drawing.

**UTILITY NOTES**  
 1. This drawing cannot be accepted as acknowledging all of the utilities and it will be the responsibility of the user to contact the respective utility authorities for confirmation.  
 2. Only visible surface utilities were located.  
 3. A field location of underground plant by the pertinent utility authority is mandatory before any work involving breaking ground, probing, excavating etc.



PART 3 PLAN 4R - 24271  
 PIN 04537 - 0802  
 BY-LAW 2010-276, INST. 041588205

PART 2 PLAN 4R - 30382  
 PIN 04537 - 0852  
 BY-LAW 2017-334, INST. 00949683



© Annis, O'Sullivan, Vollebek Ltd. 2018. THIS PLAN IS PROTECTED BY COPYRIGHT  
**ANNIS, O'SULLIVAN, VOLLEBEK LTD.**  
 14 Concourse Gate, Suite 500  
 Nepean, Ont. K2E 7S6  
 Phone: (613) 727-0850 / Fax: (613) 727-1079  
 Email: Nepean@vollebek.com  
 Job No. 17456-18 Anderson P.L.I. 9 C2 HU T F

Y:\2018\17456-18 Anderson P.L.I. 9 C2 HU T F.dwg