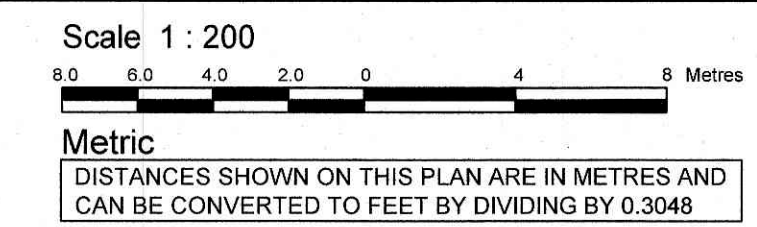


ANNIS, O'SULLIVAN, VOLLEBEKK LTD grants to
Insight Properties INC. (The Client), their solicitors,
mortgages, and other related parties, permission to use original, signed, sealed
copies of the Surveyor's Real Property Report in transactions involving The Client.



SURVEYOR'S REAL PROPERTY REPORT
PART 1 Plan of
LOTS 18, 19, 20, 21, 22 & 23
REGISTERED PLAN 369
CITY OF OTTAWA
Surveyed by Annis, O'Sullivan, Vollebekk Ltd.

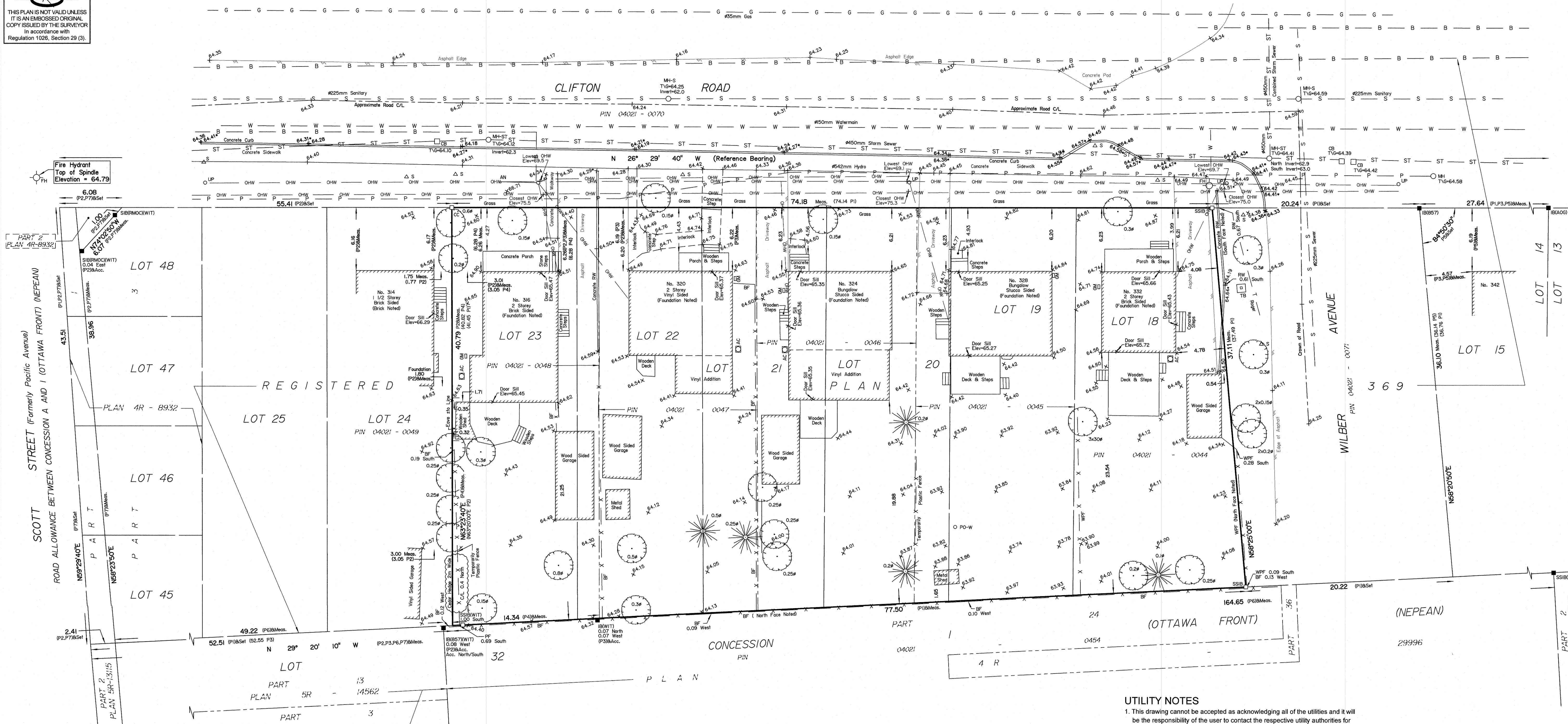
Surveyor's Certificate
I CERTIFY THAT:
1. This survey and plan are correct and in accordance with the Surveys
Act, the Surveyors Act and the Land Titles Act and the regulations
made under them.
2. The survey was completed on the 5th day of February, 2019.

Feb 7/19
Date
V. Andrew Shep
Ontario Land Surveyor

PART 2
THIS PLAN MUST BE READ IN CONJUNCTION WITH
SURVEY REPORT DATED February 7, 2019

Notes & Legend

Denotes	
□	Survey Monument Planted
■	Survey Monument Found
SIB	Standard Iron Bar
SSIB	Short Standard Iron Bar
IB	Iron Bar
CC	Cut Cross
(WIT)	Witness
Meas.	Measured
(AOG)	Annis, O'Sullivan, Vollebekk Ltd.
Acc.	Accepted
(P1)	Registered Plan 369
(P2)	(SG) Plan May 29, 2018
(P3)	(1319) Plan September 29, 1992
(P4)	(AOG) Plan June 10, 1985
(P5)	(857) Plan May 31, 1985
(P6)	(AOG) Plan May 8, 2015
(P7)	Plan 4R-8932
○ FH	Fire Hydrant
○ MH-ST	Maintenance Hole (Storm Sewer)
○ MH-S	Maintenance Hole (Sanitary)
○ MH	Maintenance Hole (Unidentified)
— ST	Underground Storm Sewer
— S	Underground Sanitary Sewer
— W	Underground Water
— P	Underground Power
— G	Underground Gas
— T	Underground Telecommunication
— B	Bell Cable
— OHW	Overhead Wires
□ CB	Catch Basin
□ GM	Gas Meter
□ HM	Hydro Meter
BF	Board Fence
WPF	Wood Picket Fence
○ UP	Utility Pole
○ AN	Anchor
□ AC	Air Conditioner
RW	Retaining Wall
○	Diameter
+55.00	Location of Elevations
+55.00'	Top of Concrete Curb / RW Elevation
C/L	Centreline
○	Deciduous Tree
★	Coniferous Tree
○ PO-W	Wood Pole
△ S	Sign
○ TB	Unidentified Terminal Box



UTILITY NOTES

- This drawing cannot be accepted as acknowledging all of the utilities and it will be the responsibility of the user to contact the respective utility authorities for confirmation.
- Only visible surface utilities were located.
- Underground utility data derived from City of Ottawa utility sheet reference E-05-02 & E-05-06
- Sanitary and storm sewer grades and inverts were derived from City of Ottawa Planning and Works Department Sewer and Drainage Reference E-23-c
- A field location of underground plant by the pertinent utility authority is mandatory before any work involving breaking ground, probing, excavating etc.

ELEVATION NOTES

- Elevations shown are geodetic and are referred to the CGVD28 geodetic datum.
- It is the responsibility of the user of this information to verify that the job benchmark has not been altered or disturbed and that its relative elevation and description agrees with the information shown on this drawing.

Topographic data was collected under Winter Conditions.
Snow cover and ice preclude determining location and
elevation of some topographical data that is otherwise visible.