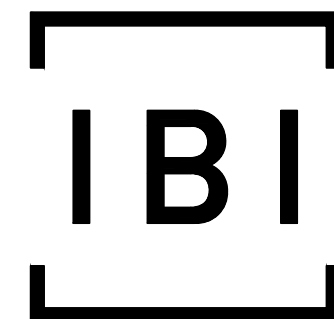
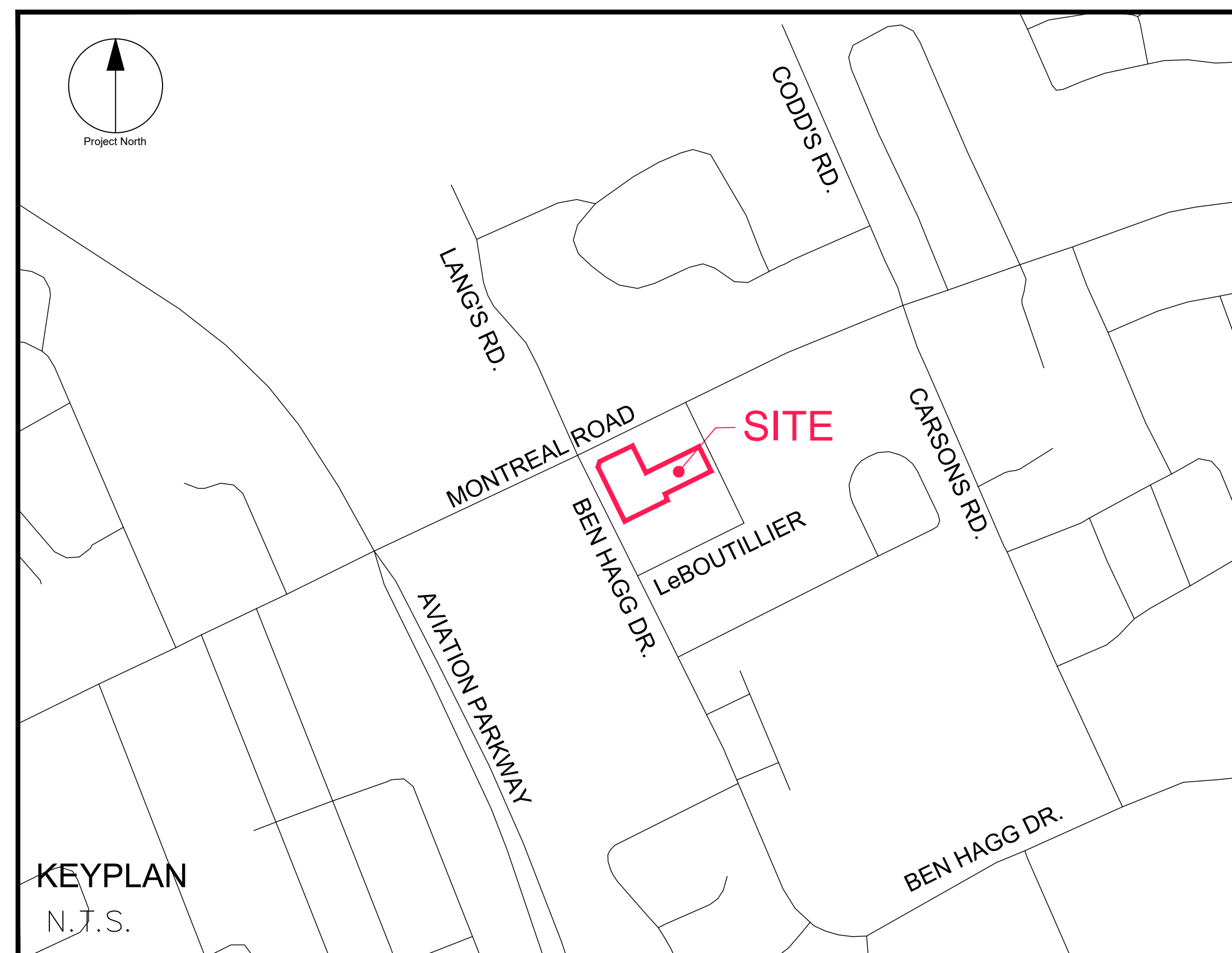


SOVIMA OTTAWA  
800 MONTREAL ROAD



**IBI GROUP**  
400 – 333 Preston Street  
Ottawa ON K1S 5N4 Canada  
tel 613 225 1311 fax 613 225 9868  
**ibigroup.com**

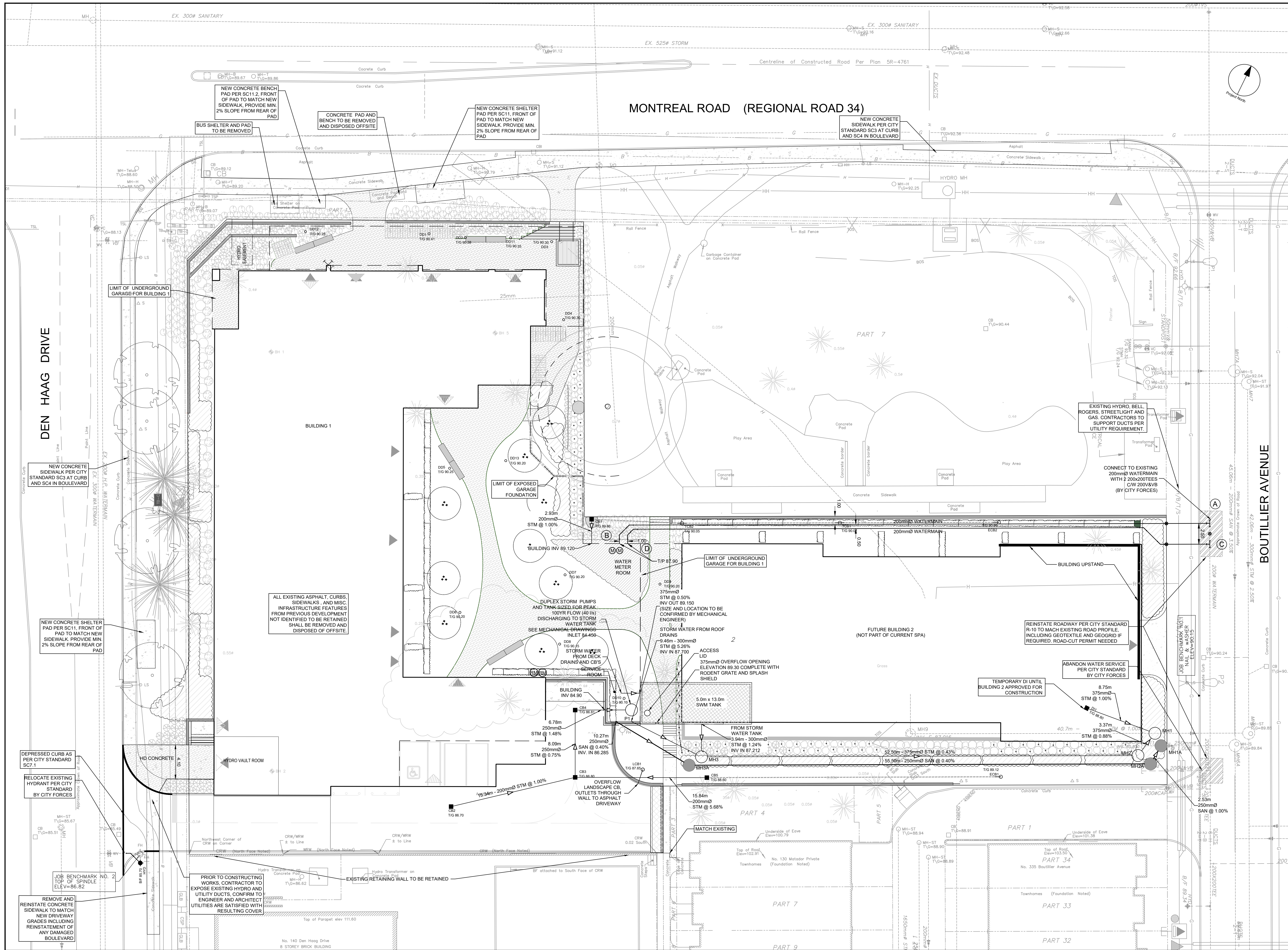


| Sheet List Table |  |
|------------------|--|
| Sheet Number     | Sheet Title                            |
| C-000            | COVER                                  |
| C-001            | GENERAL PLAN OF SERVICES               |
| C-010            | DETAILS AND NOTES                      |
| C-200            | GRADING PLAN                           |
| C-400            | SANITARY DRAINAGE AREA PLAN            |
| C-500            | STORM DRAINAGE AREA PLAN               |
| C-900            | EROSION AND SEDIMENTATION CONTROL PLAN |

# SOVIMA OTTAWA INC.

CONTRACT NO. 125532





CLIENT

SOVIMA OTTAWA INC.

100 rue LANSDOWNE,  
SAINT-BRUNO-de-MONTARVILLE, QC

COPYRIGHT

This drawing has been prepared solely for the intended use, thus any reproduction or distribution for any purpose other than authorized by IBI Group is forbidden. Written dimensions shall have precedence over scaled dimensions. Contractors shall verify and be responsible for all dimensions and conditions on the job, and IBI Group shall be informed of any variations from the dimensions and conditions shown on the drawing. Shop drawings shall be submitted to IBI Group for general conformance before proceeding with fabrication.

IBI Group Professional Services (Canada) Inc.

is a member of the IBI Group of companies

| No. | DESCRIPTION                       | DATE       |
|-----|-----------------------------------|------------|
| 1   | ISSUED FOR SPA                    | 2020-12-10 |
| 2   | REVISED AS PER CITY COMMENTS      | 2022-02-18 |
| 3   | REVISED AS PER NEW LANDSCAPE PLAN | 2022-12-20 |
| 4   | REVISED AS PER NEW LANDSCAPE PLAN | 2024-12-19 |
| 5   | UPDATE BUS PADS                   | 2025-03-27 |

KEY PLAN

CONSULTANTS

Project Coordinator  
Architect:  
NEUF Architects SENCRIL  
Landscape:  
Lashley + Associates  
Surveyor:  
Annis, O'Sullivan, Vollebakk Ltd.  
Geotech:  
DST Engineering  
Transportation Engineer:  
IBI Group  
Interior Design:  
Nine Design  
Structural:  
L2C Experts  
Mechanical/Electrical:  
Goodkey, Weedmark & Associates Ltd.

SEAL

PROJECT

SOVIMA OTTAWA

800 MONTREAL ROAD

PROJECT NO:

125532

DRAWN BY:

D.P.S.

CHECKED BY:

D.G.Y.

PROJECT MGR:

D.G.Y.

APPROVED BY:

D.G.Y.

SHEET TITLE

GENERAL PLAN OF SERVICES

SHEET NUMBER

C-001

ISSUE

5

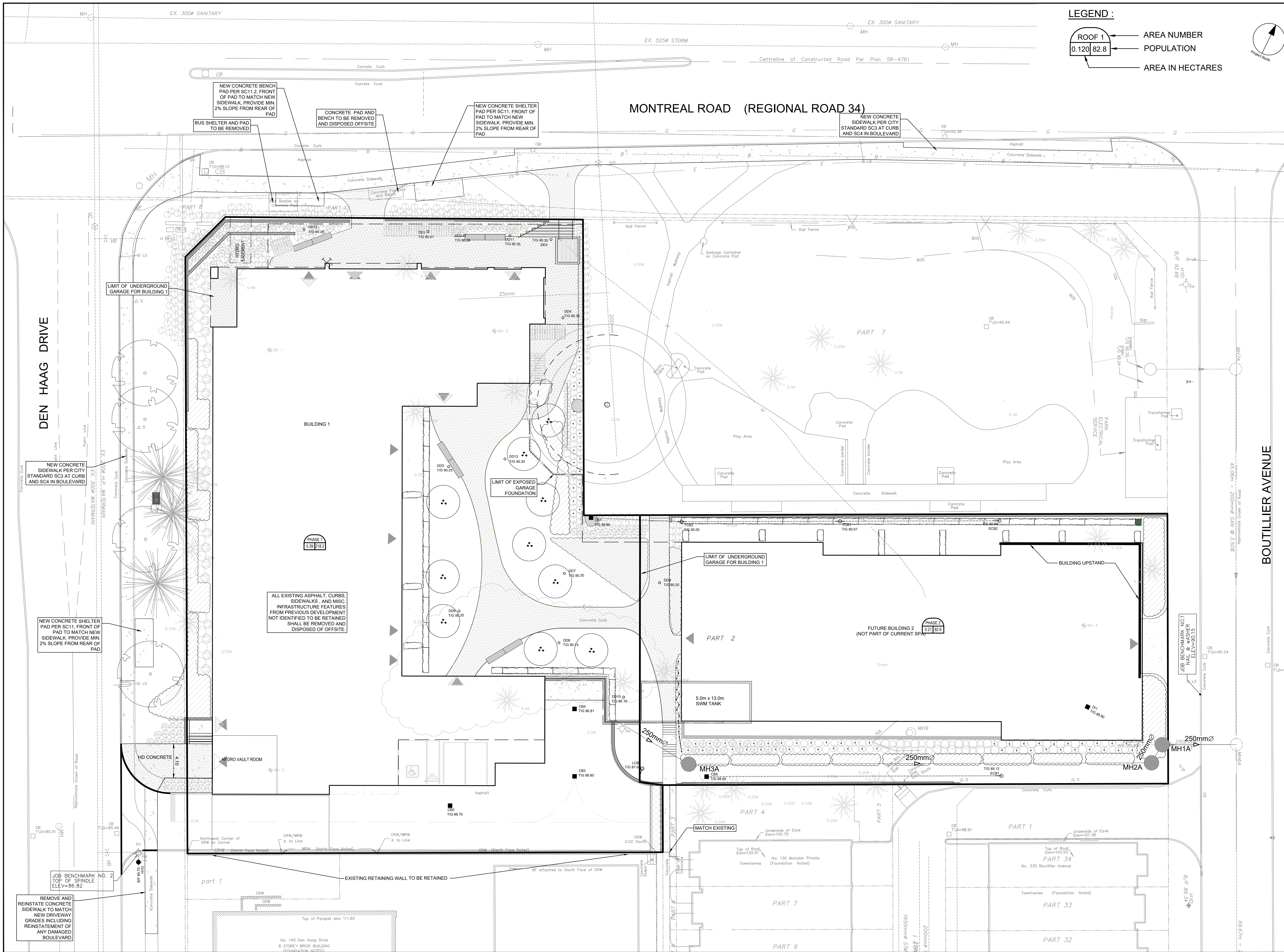












CLIENT

SOVIMA OTTAWA INC.

100 rue LANSDOWNE,  
SAINT-BRUNO-de-MONTARVILLE, QC

COPYRIGHT

This drawing has been prepared solely for the intended use, thus any reproduction or distribution for any purpose other than that authorized by IBI Group is forbidden. Written dimensions shall have precedence over scaled dimensions. Contractors shall verify and be responsible for all dimensions and conditions on the job, and IBI Group shall be informed of any variations from the dimensions and conditions shown on the drawing. Shop drawings shall be submitted to IBI Group for general conformance before proceeding with fabrication.

IBI Group Professional Services (Canada) Inc.  
is a member of the IBI Group of companies

ISSUES

| No. | DESCRIPTION                       | DATE       |
|-----|-----------------------------------|------------|
| 1   | ISSUED FOR SPA                    | 2020-12-10 |
| 2   | REVISED AS PER CITY COMMENTS      | 2022-02-18 |
| 3   | REVISED AS PER NEW LANDSCAPE PLAN | 2022-12-20 |
| 4   | REVISED AS PER NEW LANDSCAPE PLAN | 2024-12-19 |
| 5   | UPDATE BUS PADS                   | 2025-03-27 |

KEY PLAN

CONSULTANTS

Project Coordinator

Architect:  
NEUF Architects SENCRL.

Landscape:  
Lashley + Associates

Surveyor:  
Annis, O'Sullivan, Vollebakk Ltd.

Geotech:  
DST Engineering

Transportation Engineer:  
IBI Group

Interior Design:  
Nine Design

Structural:  
L2C Experts

Mechanical/Electrical:  
Goodkey, Weedmark & Associates Ltd.

SEAL

PROJECT

SOVIMA OTTAWA

800 MONTREAL ROAD

PROJECT NO:  
125532

DRAWN BY:  
D.P.S.

PROJECT MGR:  
D.G.Y.

CHECKED BY:  
D.G.Y.

APPROVED BY:  
D.G.Y.

SHEET TITLE

SANITARY DRAINAGE AREA  
PLAN

SHEET NUMBER

C-400

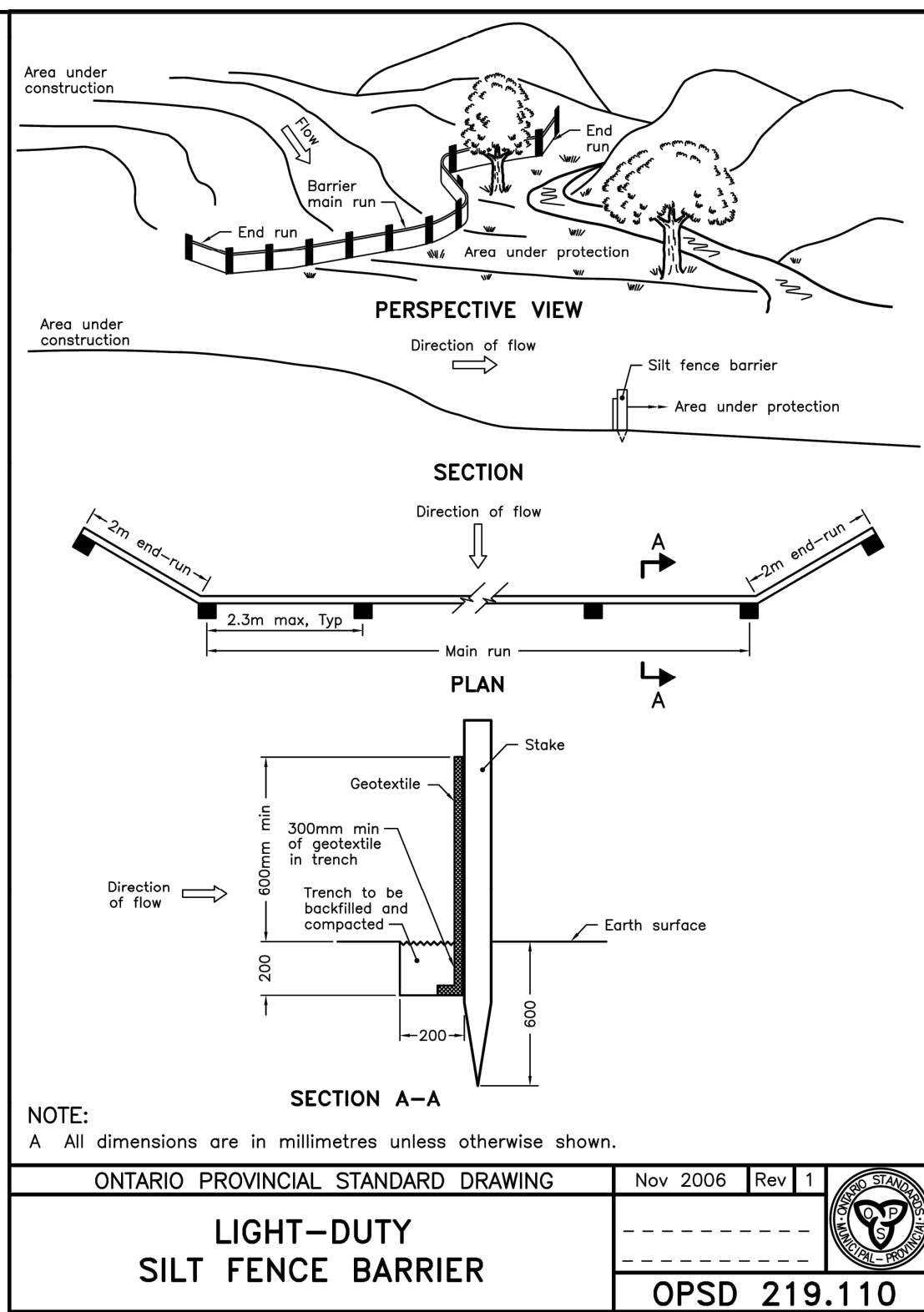
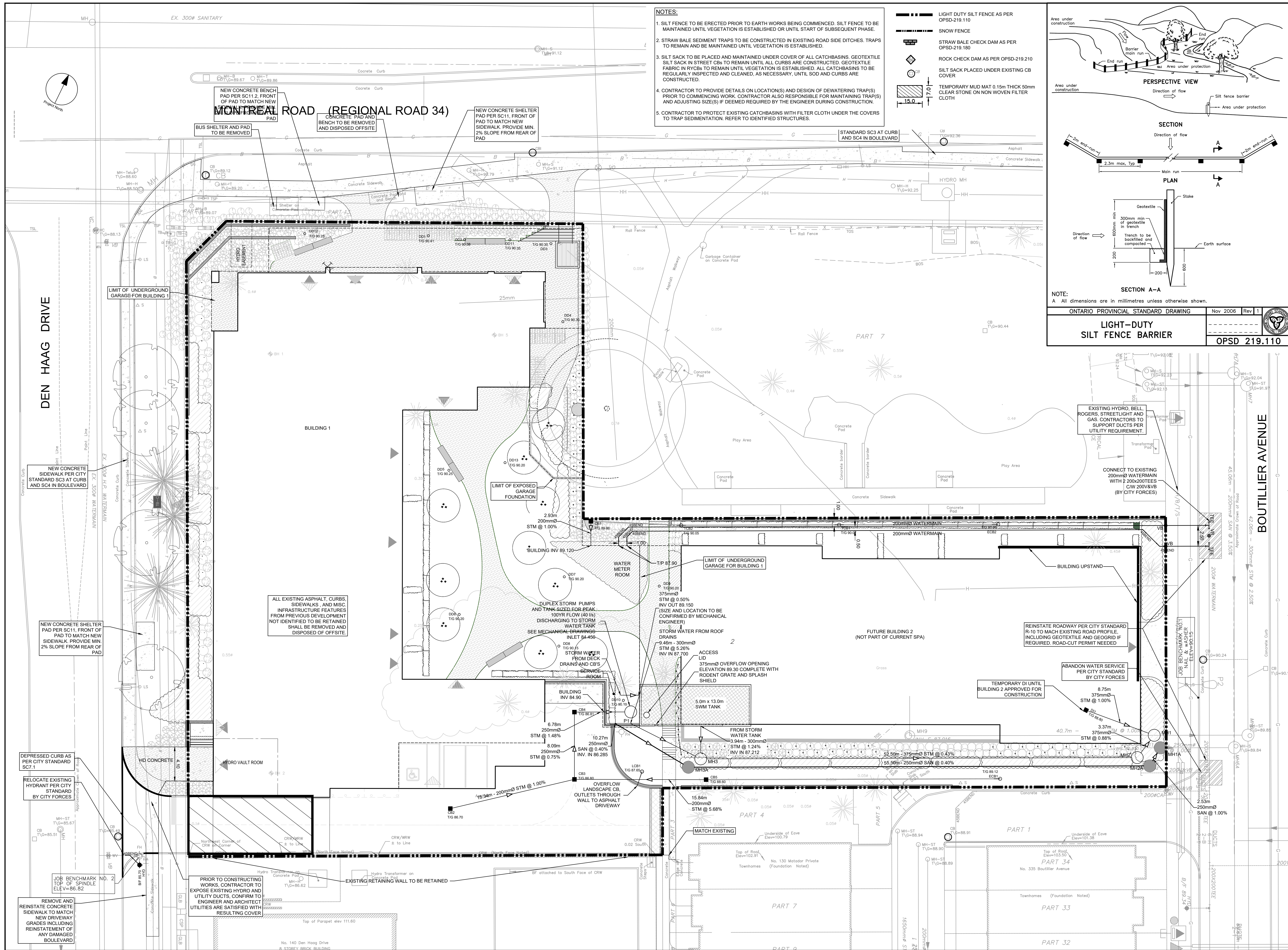
ISSUE

5









**CLIENT**  
**SOVIMA OTTAWA INC.**

100 rue LANSDOWNE,  
SAINT-BRUNO-de-MONTARVILLE, QC

**COPYRIGHT**  
This drawing has been prepared solely for the intended use, thus any reproduction or distribution for any purpose other than authorized by IBI Group is prohibited. Written dimensions shall have precedence over scaled dimensions. Contractors shall verify and be responsible for all dimensions and conditions on the job, and IBI Group shall be informed of any variations from the dimensions and conditions shown on the drawing. Shop drawings shall be submitted to IBI Group for general conformance before proceeding with fabrication.

**IBI Group Professional Services (Canada) Inc.**  
is a member of the IBI Group of companies.

**ISSUES**

| No. | DESCRIPTION                       | DATE       |
|-----|-----------------------------------|------------|
| 1   | ISSUED FOR SPA                    | 2020-12-10 |
| 2   | REVISED AS PER CITY COMMENTS      | 2022-02-18 |
| 3   | REVISED AS PER NEW LANDSCAPE PLAN | 2022-12-20 |
| 4   | REVISED AS PER NEW LANDSCAPE PLAN | 2024-12-19 |
| 5   | UPDATE BUS PADS                   | 2025-03-27 |

**KEY PLAN**

**CONSULTANTS**

Project Coordinator  
Architect:  
NEUF Architects SENCRIL.  
Landscape:  
Lashley + Associates  
Surveyor:  
Annis, O'Sullivan, Vollebakk Ltd.  
Geotech:  
DST Engineering  
Transportation Engineer:  
IBI Group  
Interior Design:  
Nine Design  
Structural:  
L2C Experts  
Mechanical/Electrical:  
Goodkey, Weedmark & Associates Ltd.

**SEAL**

**IBI GROUP**  
Suite 400 - 333 Preston Street  
Ottawa ON K1S 5N4 Canada  
tel 613 225 1311 / 613 241 3300 fax 613 225 9868  
ibigroup.com

**PROJECT**  
**SOVIMA OTTAWA**

800 MONTREAL ROAD

**PROJECT NO:**  
125532

**DRAWN BY:**  
D.P.S.

**CHECKED BY:**  
D.G.Y.

**PROJECT MGR:**  
D.G.Y.

**APPROVED BY:**  
D.G.Y.

**SHEET TITLE**  
**EROSION AND SEDIMENTATION CONTROL PLAN**

**SHEET NUMBER**  
**C-900**

**ISSUE**  
**5**