

**GENERAL NOTES:**

- COORDINATE AND SCHEDULE ALL WORK WITH OTHER TRADES AND CONTRACTORS.
- DETERMINE THE EXACT LOCATION, SIZE, MATERIAL AND ELEVATION OF ALL EXISTING UTILITIES PRIOR TO COMMENCING CONSTRUCTION. PROTECT AND ASSUME RESPONSIBILITY FOR ALL EXISTING UTILITIES WHETHER OR NOT SHOWN ON THIS DRAWING.
- OBTAIN ALL NECESSARY PERMITS AND APPROVALS FROM THE CITY OF OTTAWA BEFORE COMMENCING CONSTRUCTION.
- BEFORE COMMENCING CONSTRUCTION OBTAIN AND PROVIDE PROOF OF COMPREHENSIVE, ALL RISK AND OPERATIONAL LIABILITY INSURANCE FOR \$5,000,000.00. INSURANCE POLICY TO NAME OWNERS, ENGINEERS AND ARCHITECTS AS COINSURED.
- RESTORE ALL DISTURBED AREAS ON-SITE AND OFF-SITE, INCLUDING TRENCHES AND SURFACES ON PUBLIC ROAD ALLOWANCES TO EXISTING CONDITIONS OR BETTER TO THE SATISFACTION OF THE CITY OF OTTAWA AND ENGINEER.
- REMOVE FROM SITE ALL EXCESS EXCAVATED MATERIAL, ORGANIC MATERIAL AND DEBRIS UNLESS OTHERWISE INSTRUCTED BY ENGINEER. EXCAVATE AND REMOVE FROM SITE ANY CONTAMINATED MATERIAL. ALL CONTAMINATED MATERIAL SHALL BE DISPOSED OF AT A LICENSED LANDFILL FACILITY.
- ALL ELEVATIONS ARE GEODETIC.
- REFER TO GEOTECHNICAL REPORT (No. PGS281-1, DATED JULY 16TH, 2020), PREPARED BY PATERSON, FOR SUBSURFACE CONDITIONS, CONSTRUCTION RECOMMENDATIONS, AND GEOTECHNICAL INSPECTION REQUIREMENTS. THE GEOTECHNICAL CONSULTANT IS TO REVIEW ON-SITE CONDITIONS AFTER EXCAVATION PRIOR TO PLACEMENT OF THE GRANULAR MATERIAL.
- REFER TO ARCHITECTS AND LANDSCAPE ARCHITECTS DRAWINGS FOR BUILDING AND HARDSURFACE AREAS AND DIMENSIONS.
- REFER TO STORMWATER MANAGEMENT REPORT PREPARED BY NOVATECH ENGINEERING CONSULTANTS LTD (20230428).
- SAW CUT AND KEY GRIND ASPHALT AT ALL ROAD CUTS AND ASPHALT TIE IN POINTS AS PER CITY OF OTTAWA STANDARDS (R10).
- PROVIDE LINE/PARKING PAINTING.
- CONTRACTOR TO PROVIDE THE CONSULTANT WITH A GENERAL PLAN OF SERVICES INDICATING ALL OTTAWA AS-BUILT INFORMATION SHOWN ON THIS PLAN. AS-BUILT INFORMATION MUST INCLUDE: PIPE MATERIAL, SIZES, LENGTHS, SLOPES, INVERT AND TIE ELEVATIONS, STRUCTURE LOCATIONS, VALVE AND HYDRANT LOCATIONS, TIE IN ELEVATIONS AND ANY ALIGNMENT CHANGES, ETC.

**SEWER NOTES:**

- SPECIFICATIONS:
 

ITEM	SPEC. NO.	REFERENCE
CATCHBASIN (600x600mm)	709.010	OPSD
STORM / SANITARY MANHOLE (12000)	701.010	OPSD
CB, FRAME & COVER	400.020	OPSD
STORM / SANITARY MH FRAME & COVER	401.010	OPSD
SEWER TRENCH - BEDDING (GRANULAR A)	S6, S7, W17	CITY OF OTTAWA / OPSD
COVER (GRANULAR A OR GRANULAR B TYPE I, WITH MAXIMUM PARTICLE SIZE=50mm)		
STORM SEWER	PVC DR 35	
SANITARY SEWER	PVC DR 35	
CATCHBASIN LEAD	PVC DR 35	
SEWER SERVICE CONNECTION - RIGID PIPE	S11	CITY OF OTTAWA
SEWER SERVICE ABANDONMENT	S11.4	CITY OF OTTAWA
- INSULATE ALL PIPES (SANSTM) THAT HAVE LESS THAN 1.5m COVER WITH 50mmx1200mm H-40 INSULATION. PROVIDE 150mm CLEARANCE BETWEEN PIPE AND INSULATION.
- SERVICES ARE TO BE CONSTRUCTED TO 1.0m FROM FACE OF BUILDING AT A MINIMUM SLOPE OF 1.0%.
- PIPE BEDDING, COVER AND BACKFILL ARE TO BE COMPACTED TO AT LEAST 98% OF THE STANDARD PROCTOR MAXIMUM DRY DENSITY. THE USE OF CLEAR CRUSHED STONE AS A BEDDING LAYER SHALL NOT BE PERMITTED.
- FLEXIBLE CONNECTIONS ARE REQUIRED FOR CONNECTING PIPES TO MANHOLES (FOR EXAMPLE KOR-N-SEAL, PSX POSITIVE SEAL AND DURASEAL). THE CONCRETE CRADLE FOR THE PIPE CAN BE ELIMINATED.
- THE OWNER SHALL REQUIRE THAT THE SITE SERVICING CONTRACTOR PERFORM FIELD TESTS FOR QUALITY CONTROL OF ALL SANITARY SEWERS. LEAKAGE TESTING SHALL BE COMPLETED IN ACCORDANCE WITH OPSS 410.07.16, 410.07.16.04 AND 407.07.24. DYE TESTING IS TO BE COMPLETED ON ALL SANITARY SERVICES TO CONFIRM PROPER CONNECTION TO THE SANITARY SEWER MAIN. THE FIELD TESTS SHALL BE PERFORMED IN THE PRESENCE OF A CERTIFIED PROFESSIONAL ENGINEER WHO SHALL SUBMIT A CERTIFIED COPY OF THE TEST RESULTS.
- STORM MANHOLES AND CBMHs ARE TO HAVE 300mm SUMPS UNLESS OTHERWISE INDICATED.
- CONTRACTOR TO TELETYPE (CCTV) ALL PROPOSED SEWERS, 200mmØ OR GREATER PRIOR TO BASE COURSE ASPHALT. UPON COMPLETION OF CONTRACT, THE CONTRACTOR IS RESPONSIBLE TO FLUSH AND CLEAN ALL SEWERS & APPURTENANCES.
- FULL PORT BACKWATER VALVES ARE REQUIRED ON THE SANITARY SERVICES. INSTALLED AS PER THE MANUFACTURERS RECOMMENDATIONS AND A BACKWATER VALVE IS REQUIRED ON THE STORM SERVICES / FOUNDATION DRAINS FOR EACH BUILDING. INSTALLED AS PER STD. DWG514
- REINSTATE ALL EXISTING PAVEMENT, CURB AND BOULEVARDS AS PER CITY OF OTTAWA R10.
- ALL EXISTING SANITARY AND STORM SERVICES ARE TO BE CAPPED AT THE PROPERTY LINE TO THE SATISFACTION OF THE CITY OF OTTAWA'S SEWER OPERATION.
- MONITORING TEST PORTS FOR BUILDING SERVICES TO BE INSTALLED IN PARKING GARAGE.

**WATERMAIN NOTES:**

- SPECIFICATIONS:
 

ITEM	SPEC. NO.	REFERENCE
WATERMAIN TRENCHING	W17	CITY OF OTTAWA
THERMAL INSULATION IN SHALLOW TRENCHES	W22	CITY OF OTTAWA
VALVE BOX ASSEMBLY	W24	CITY OF OTTAWA
CONNECTION DETAIL FROM EXISTING TO NEW WM	W25.1	CITY OF OTTAWA
WATERMAIN CROSSING BELOW SEWERS	W25	CITY OF OTTAWA
WATERMAIN CROSSING OVER SEWER	W25.2	CITY OF OTTAWA
THERMAL INSULATED AT OPEN STRUCTURE	W23	CITY OF OTTAWA
WATER SERVICE INSULATION AT SEWER CROSSING	W38	CITY OF OTTAWA
- SUPPLY AND CONSTRUCT ALL WATERMANS AND APPURTENANCES IN ACCORDANCE WITH THE CITY OF OTTAWA STANDARDS AND SPECIFICATIONS. EXCAVATION, INSTALLATION, BACKFILL, AND RESTORATION OF ALL WATERMANS BY THE CONTRACTOR. CONNECTIONS AND SHUT-OFFS AT THE MAIN AND CHLORINATION OF THE WATER SYSTEM SHALL BE PERFORMED BY CITY OFFICIALS.
- WATERMAIN SHALL BE MINIMUM 2.4m DEPTH BELOW GRADE UNLESS OTHERWISE INDICATED. OTHERWISE THERMAL INSULATION IS REQUIRED AS PER STD. DWG622.
- PROVIDE MINIMUM 0.50m CLEARANCE BETWEEN OUTSIDE OF PIPES AT ALL CROSSINGS WHEN WATERMAIN IS BELOW AND MINIMUM 0.25m CLEARANCE WHEN WATERMAIN IS ABOVE.
- WATER SERVICE IS TO BE CONSTRUCTED TO WITHIN 1.0m OF FOUNDATION WALL AND CAPPED, UNLESS OTHERWISE INDICATED.
- ALL EXISTING WATER SERVICES TO BE BLANKED AT MAIN BY CITY FORCES. EXCAVATION AND REINSTATEMENT BY CONTRACTOR.

**GRADING NOTES:**

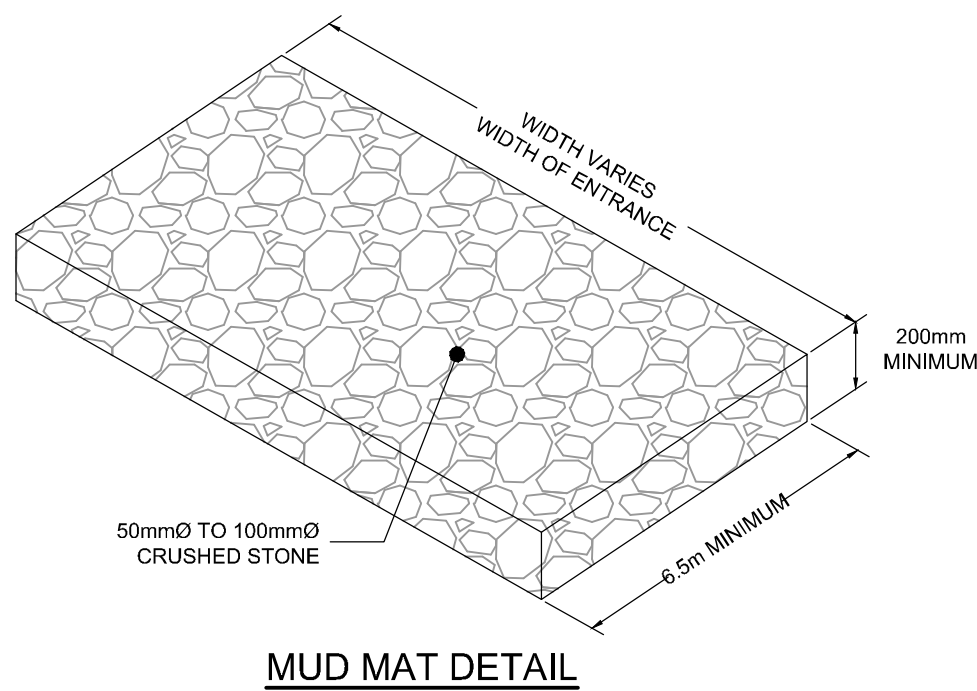
- ALL TOPSOIL, ORGANIC OR DELETERIOUS MATERIAL MUST BE ENTIRELY REMOVED FROM BENEATH THE PROPOSED PAVED AREAS AS DIRECTED BY THE SITE ENGINEER OR GEOTECHNICAL ENGINEER.
- EXPOSED SUBGRADES IN PROPOSED PAVED AREAS SHOULD BE PROOF ROLLED WITH A LARGE STEEL DRUM ROLLER AND INSPECTED BY THE GEOTECHNICAL ENGINEER PRIOR TO THE PLACEMENT OF GRANULARS.
- ANY SOFT AREAS EVIDENT FROM THE PROOF ROLLING SHOULD BE SUB-EXCAVATED AND REPLACED WITH SUITABLE MATERIAL THAT IS FROST COMPATIBLE WITH THE EXISTING SOILS AS RECOMMENDED BY THE GEOTECHNICAL ENGINEER.
- THE GRANULAR BASE SHOULD BE COMPACTED TO AT LEAST 98% OF THE STANDARD PROCTOR MAXIMUM DRY DENSITY VALUE. ANY ADDITIONAL GRANULAR FILL USED BELOW THE PROPOSED PAVEMENT SHOULD BE COMPACTED TO AT LEAST 95% OF THE STANDARD PROCTOR MAXIMUM DRY DENSITY VALUE.
- MINIMUM OF 2% GRADE FOR ALL GRASS AREAS UNLESS OTHERWISE NOTED.
- MAXIMUM TERRACING GRADE TO BE 3:1 UNLESS OTHERWISE NOTED.
- ALL CURBS SHALL BE BARRIER CURBS (150mm) UNLESS OTHERWISE NOTED AND CONSTRUCTED AS PER CITY OF OTTAWA STANDARDS (SC1.1).
- REFER TO LANDSCAPE PLAN FOR PLANTING AND OTHER LANDSCAPE FEATURE DETAILS.
- CONTRACTOR TO PROVIDE THE CONSULTANT WITH A GRADING PLAN INDICATING AS-BUILT ELEVATIONS OF ALL DESIGN GRADES SHOWN ON THIS PLAN.

**PAVEMENT STRUCTURE:**

- LIGHT DUTY
  - 50mm HL3
  - 150mm GRAN "A"
  - 300mm GRAN "B" TYPE II
- HEAVY DUTY
  - 40mm HL3
  - 50mm HL3
  - 150mm GRAN "A"
  - 450mm GRAN "B" TYPE II

**EROSION AND SEDIMENT CONTROL NOTES:**

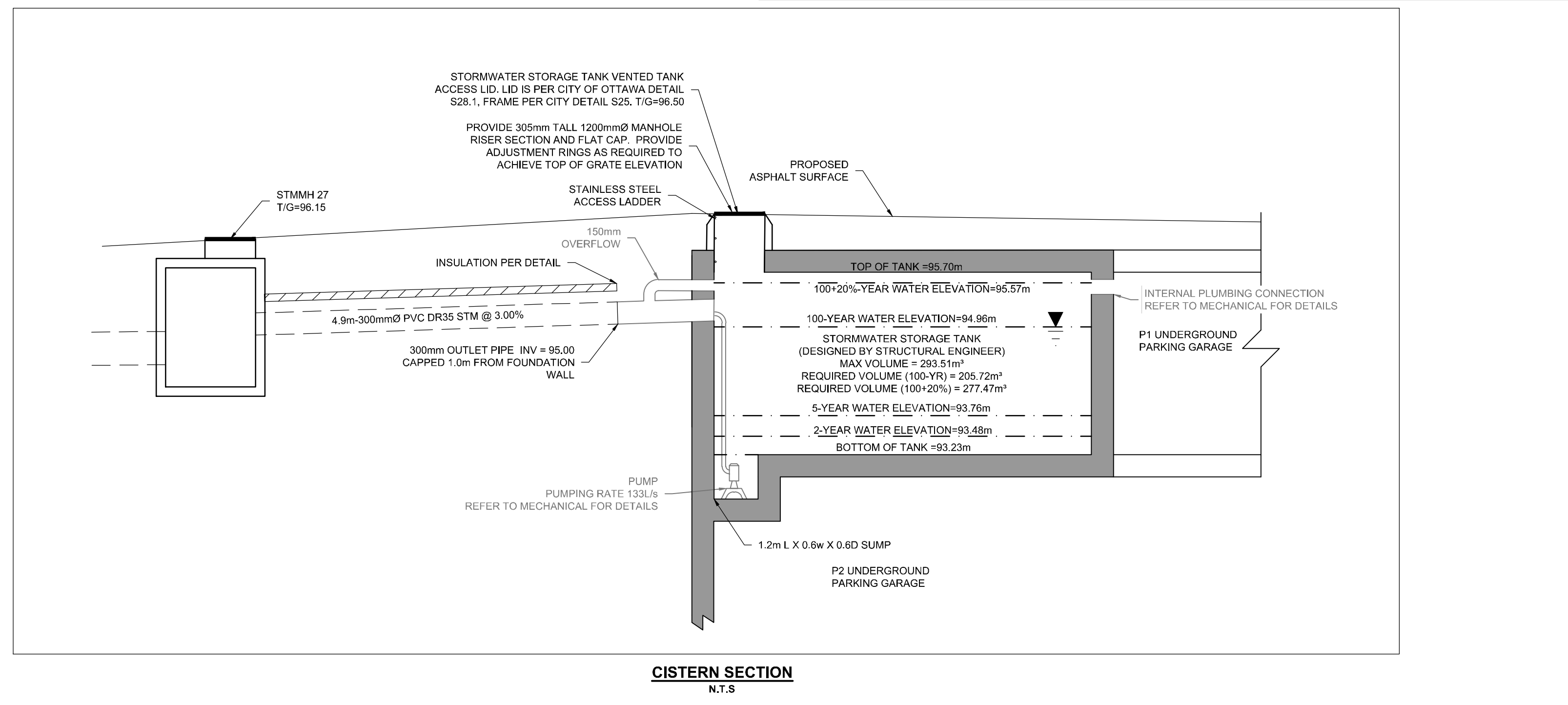
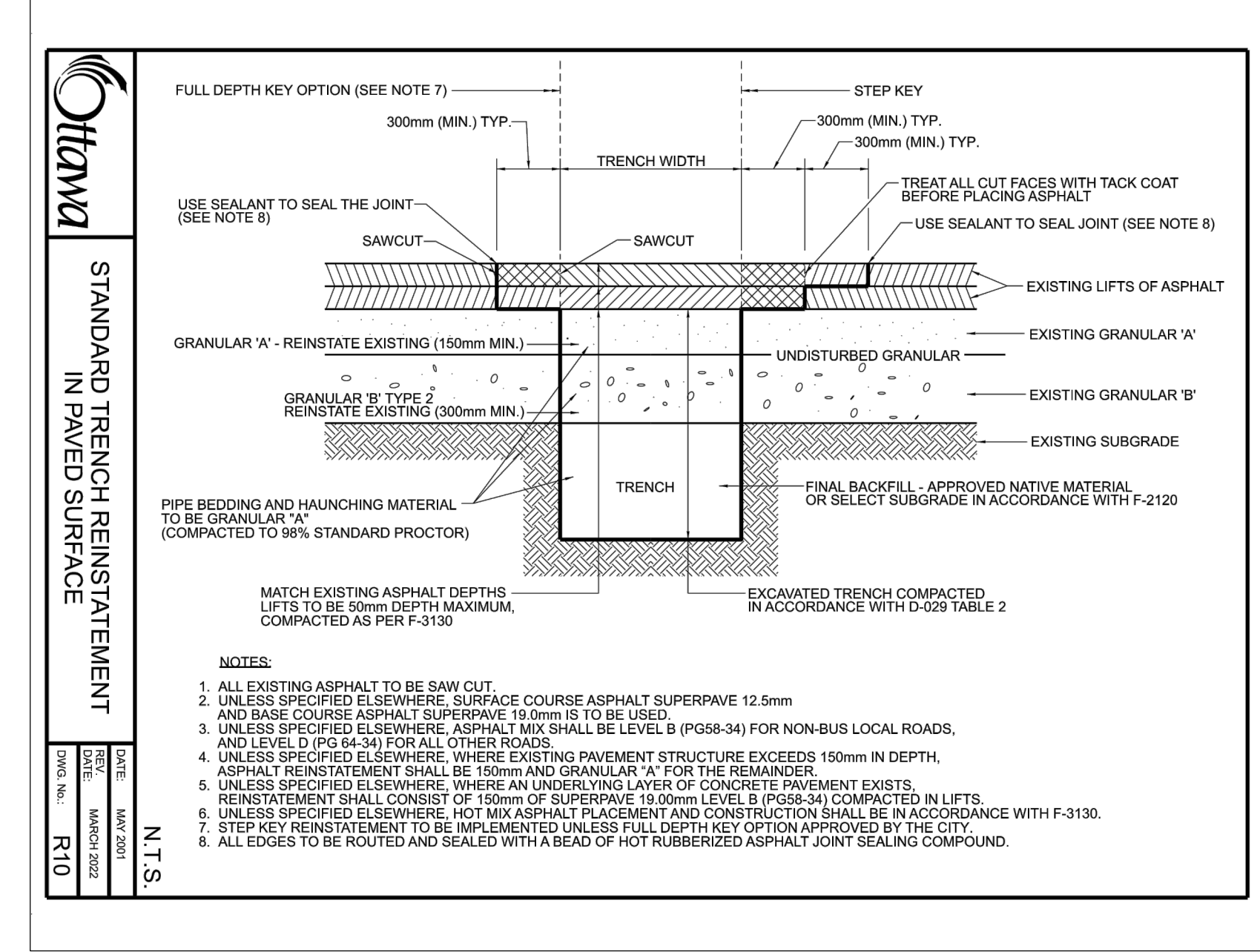
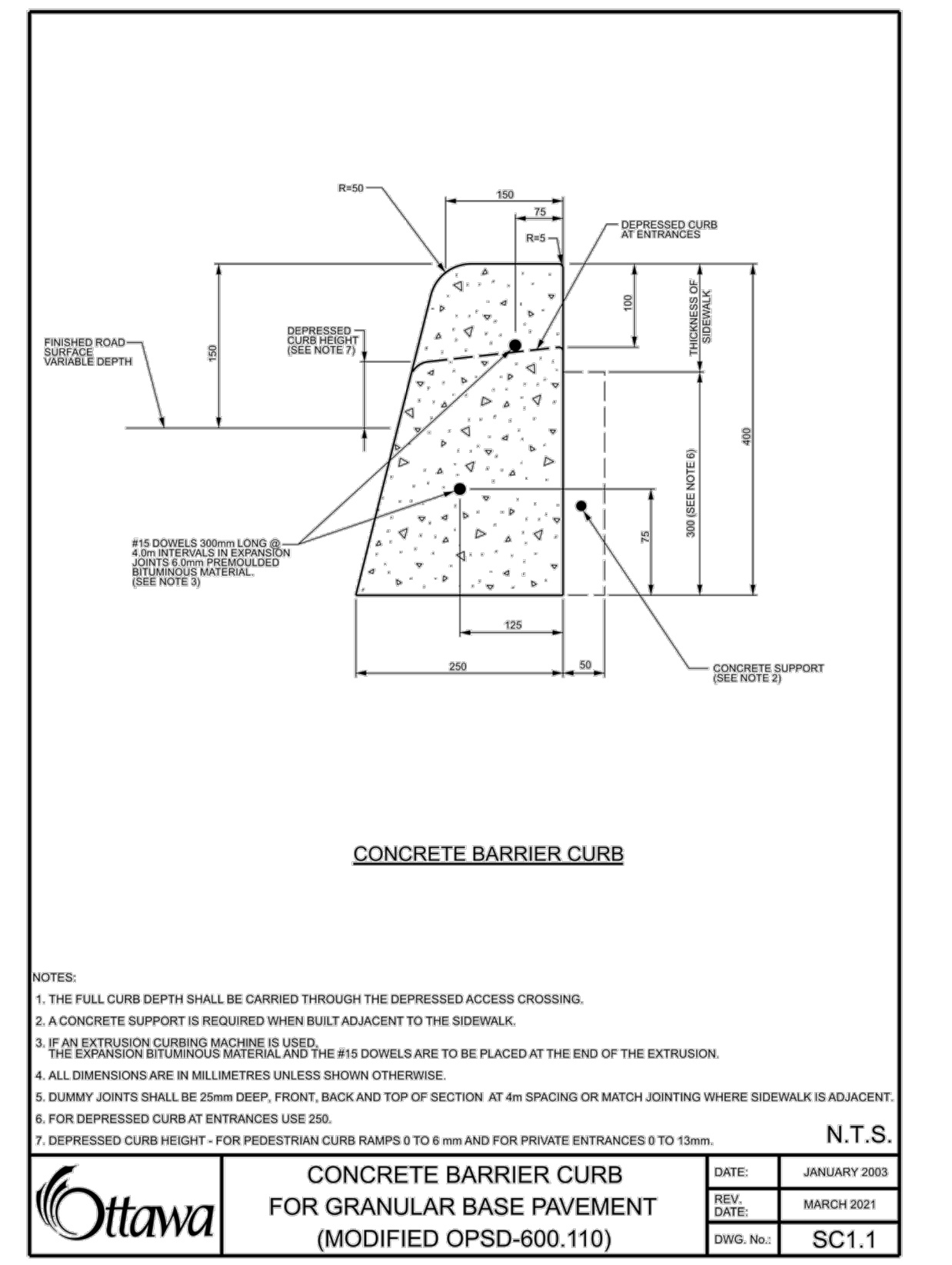
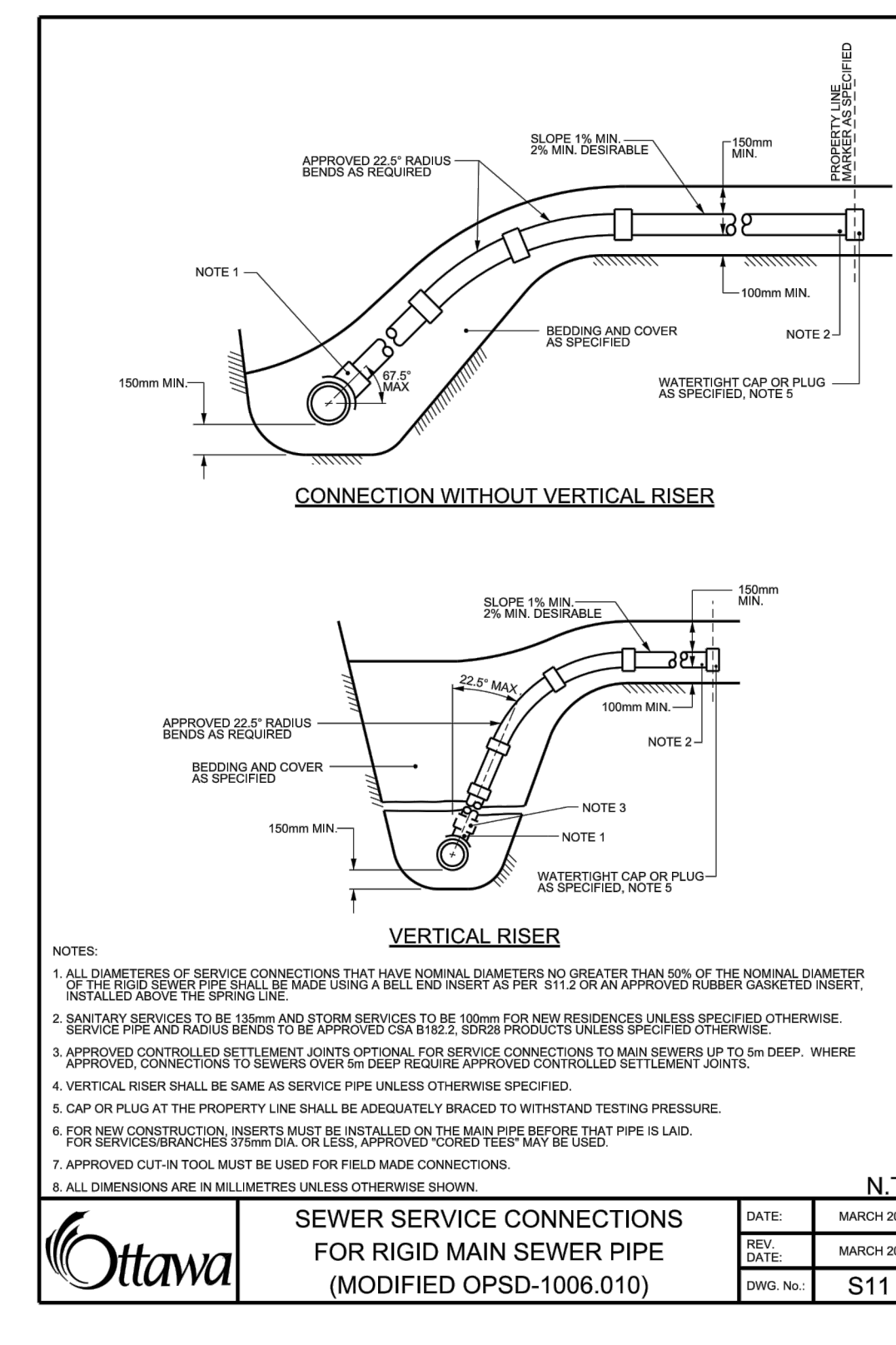
- ALL EROSION AND SEDIMENT CONTROLS SHALL BE INSTALLED TO THE SATISFACTION OF THE ENGINEER, CITY OF OTTAWA AND THE CONSERVATION AUTHORITY. THEY SHALL BE APPROPRIATE TO THE SITE CONDITIONS. PRIOR TO UNDERTAKING ANY SITE ALTERATIONS (FILLING, GRADING, REMOVAL OF VEGETATION, ETC.) AND DURING ALL PHASES OF SITE PREPARATION AND CONSTRUCTION, THESE PRACTICES SHALL BE IMPLEMENTED IN ACCORDANCE WITH THE CURRENT BEST MANAGEMENT PRACTICES FOR EROSION AND SEDIMENT CONTROL AND SHOULD INCLUDE AS A MINIMUM THOSE MEASURES INDICATED ON THE PLAN.
- TO PREVENT SURFACE EROSION FROM ENTERING THE DITCH OR STORM SYSTEM DURING CONSTRUCTION, FILTER SOCKS WILL BE PLACED UNDER GRATES OF ALL PROPOSED AND EXISTING CATCHBASINS AND STRUCTURES. A LIGHT DUTY SILT FENCE BARRIER WILL ALSO BE INSTALLED IN SELECTED LOCATIONS, AND STRAIN BALE BARRIERS WILL BE INSTALLED WITHIN THE OUTLET DITCHES. THESE CONTROL MEASURES WILL REMAIN IN PLACE UNTIL VEGETATION HAS BEEN ESTABLISHED AND CONSTRUCTION COMPLETE.
- THE SEDIMENT CONTROL MEASURES SHALL ONLY BE REMOVED WHEN, IN THE OPINION OF THE ENGINEER, THE MEASURES ARE NO LONGER REQUIRED. NO CONTROL MEASURES MAY BE PERMANENTLY REMOVED WITHOUT PRIOR AUTHORIZATION FROM THE ENGINEER.
- THE CONTRACTOR SHALL IMMEDIATELY REPORT TO THE ENGINEER ANY ACCIDENTAL DISCHARGES OF SEDIMENT MATERIAL INTO ANY DITCH OR STORM SEWER SYSTEM. APPROPRIATE RESPONSE MEASURES, INCLUDING ANY REPAIRS TO EXISTING CONTROL MEASURES OR THE IMPLEMENTATION OF ADDITIONAL CONTROL MEASURES, SHALL BE CARRIED OUT BY THE CONTRACTOR WITHOUT DELAY.
- THE CONTRACTOR ACKNOWLEDGES THAT FAILURE TO IMPLEMENT EROSION AND SEDIMENT CONTROL MEASURES MAY BE SUBJECT TO PENALTIES IMPOSED BY ANY APPLICABLE REGULATORY AGENCY.
- THE CONTRACTOR SHALL PROVIDE DUST CONTROL WITH THE APPLICATION OF WATER AND/OR CALCIUM CHLORIDE AS REQUIRED.



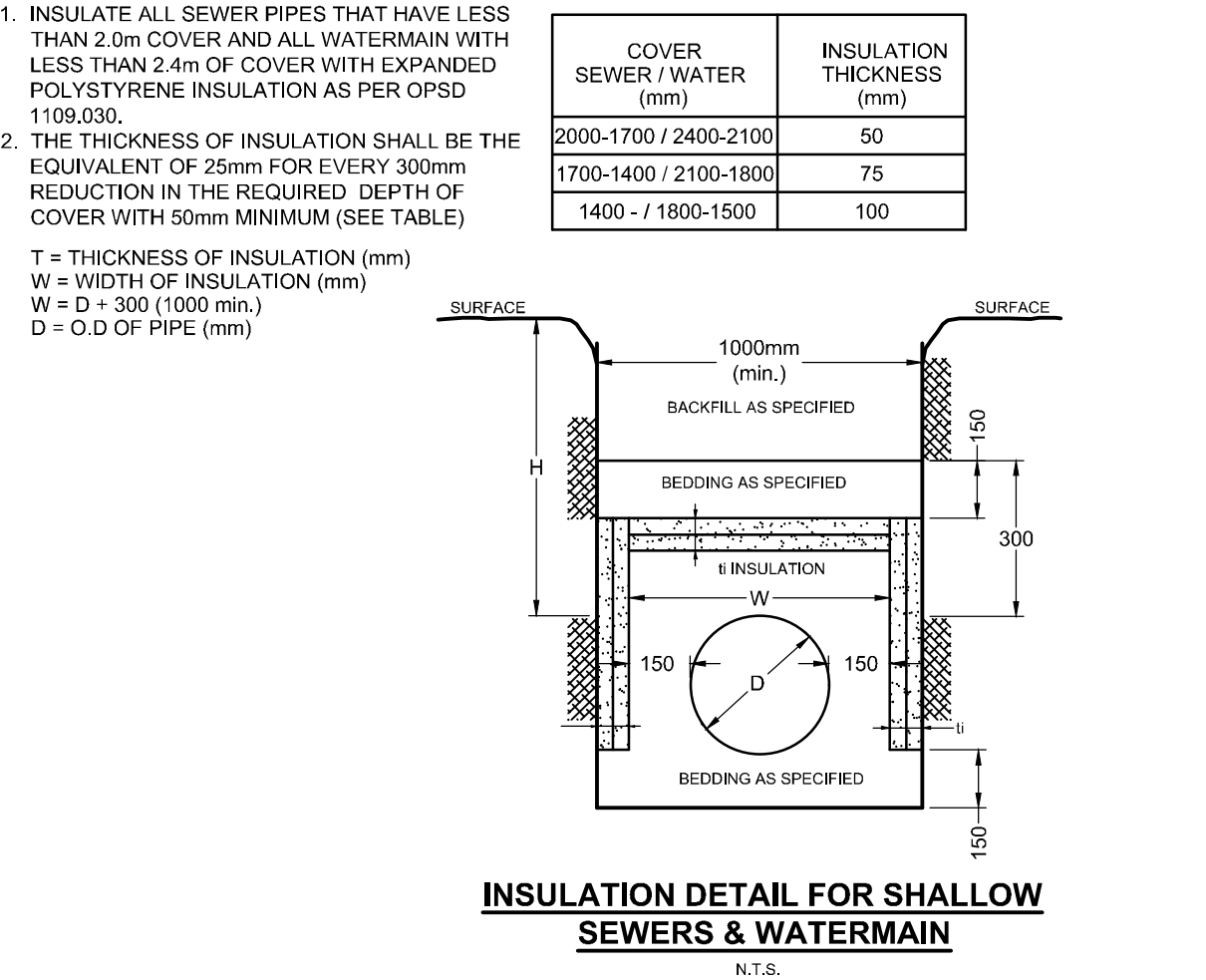
**MUD MAT DETAIL**  
NOT TO SCALE

*Allison Hamlin*  
**ALLISON HAMLIN**  
MANAGER (A), DEVELOPMENT REVIEW WEST  
PLANNING, REAL ESTATE & ECONOMIC DEVELOPMENT  
DEPARTMENT, CITY OF OTTAWA

**APPROVED**  
By Allison Hamlin at 9:28 am, Dec 12, 2023



**SEWER & WATERMAIN INSULATION NOTES:**



C:\p0201\2024\12-14-2023\120144-ND1.dwg, NDT, Nov 22, 2023 - 3:01pm, mlfmg

**NOTE:**  
THE POSITION OF ALL POLE LINES, CONDUITS, WATERMANS, SEWERS AND OTHER UNDERGROUND AND OVERGROUND UTILITIES AND STRUCTURES IS NOT NECESSARILY SHOWN ON THE CONTRACT DRAWINGS, AND WHERE SHOWN, THE ACCURACY OF THE POSITION OF SUCH UTILITIES AND STRUCTURES IS NOT GUARANTEED. BEFORE STARTING WORK, DETERMINE THE EXACT LOCATION OF ALL SUCH UTILITIES AND STRUCTURES AND ASSUME ALL LIABILITY FOR DAMAGE TO THEM.

**CLARIDGE HOMES**  
CLARIDGE HOMES  
505 PRESTON STREET,  
OTTAWA, ONTARIO  
K1S 4N7.



No.	REVISION	DATE	BY
4.	REVISED PER CITY COMMENTS	AUG 29 /23	GJM
3.	ISSUED FOR SPA	APR 28/23	GJM
2.	REVISED PER CITY COMMENTS	OCT 11/22	GJM
1.	REVISED PER CITY COMMENTS	MAY 31/22	GJM

SCALE	DESIGN	CHECKED	APPROVED
AS SHOWN	ARM/JAG	ARM/GJM	CJF
	ARM/JAG		
	GJM		



**NOVATECH**  
Engineers, Planners & Landscape Architects  
Suite 200, 240 Michael Cowpland Drive  
Ottawa, Ontario, Canada K2M 1P6  
Telephone: (613) 254-9643  
Facsimile: (613) 254-5867  
Website: www.novatech-eng.com

LOCATION	CITY OF OTTAWA
1200 MARITIME WAY <td></td>	
DRAWING NAME	NOTES AND DETAILS
PROJECT NO.	120144
REV	REV # 4
DRAWING NO.	120144 - ND1

City Plan #18348