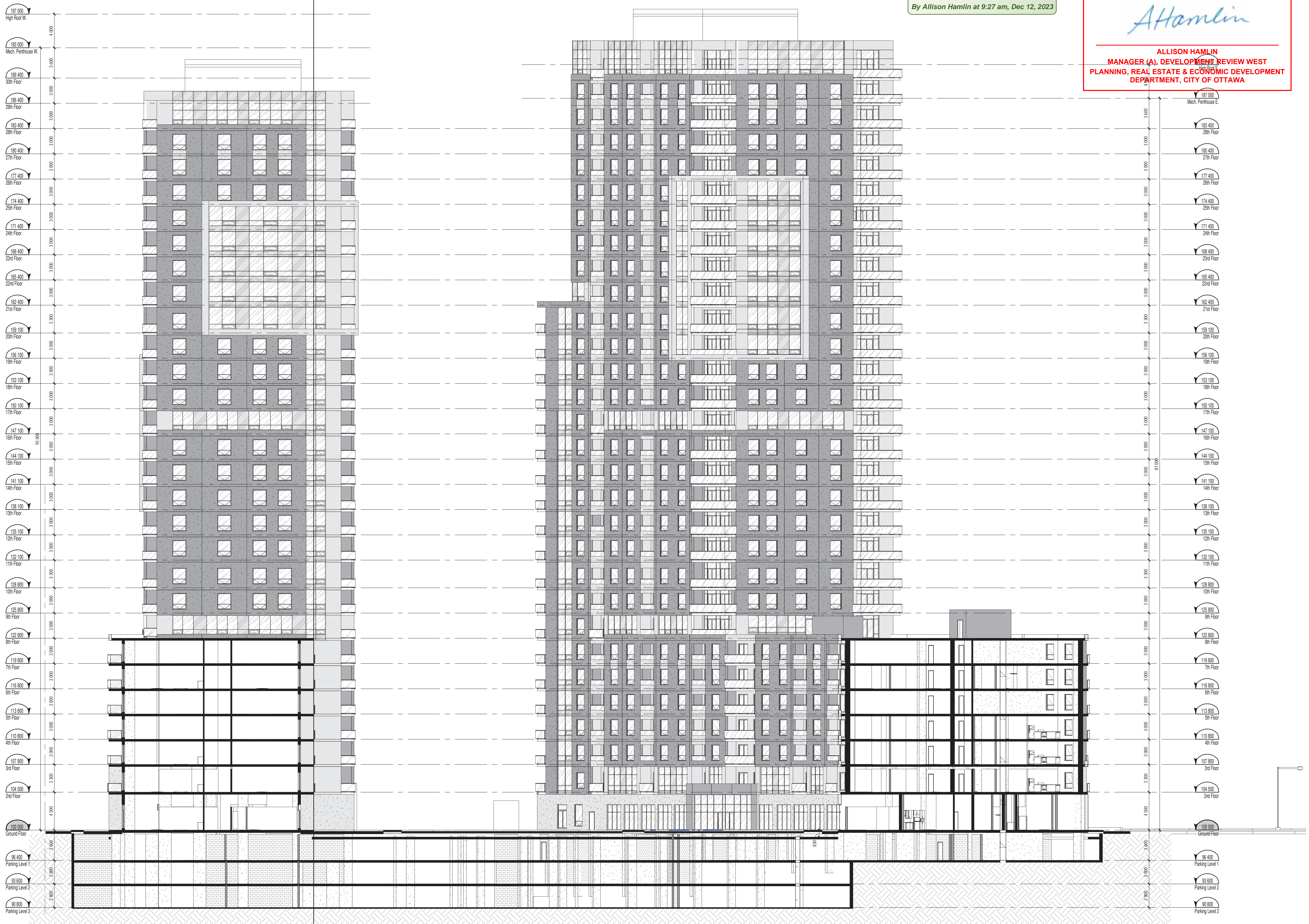


APPROVED
By Allison Hamlin at 9:27 am, Dec 12, 2023

Allison Hamlin
ALLISON HAMLIN
MANAGER (A), DEVELOPMENT REVIEW WEST
PLANNING, REAL ESTATE & ECONOMIC DEVELOPMENT
DEPARTMENT, CITY OF OTTAWA



NOTES GÉNÉRALES / General Notes

1. Ces documents d'architecture sont la propriété exclusive de NEUF architectes et ne pourront être utilisés, reproduits ou copiés sans autorisation écrite préalable. / These architectural documents are the exclusive property of NEUF architectes and cannot be used, copied or reproduced without written pre-authorization.
2. Les dimensions apparaissant aux documents doivent être vérifiées par l'entrepreneur avant le début des travaux. / All dimensions which appear on the documents must be verified by the contractor before to start the work.
3. Veuillez aviser l'architecte de toute dimension erreur ou divergence entre ces documents et ceux des autres professionnels. / The architect must be notified of all errors, omissions and discrepancies between these documents and those of the others professionals.
4. Les dimensions sur ces documents doivent être lues et non mesurées. / The dimensions on these documents must be read and not measured.

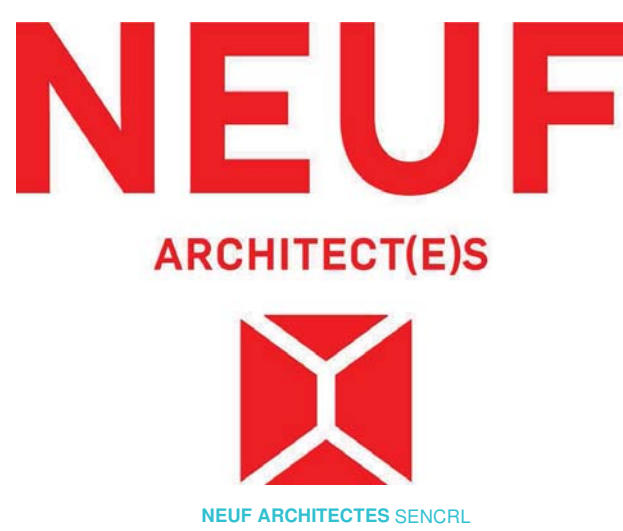
STRUCTURE / Structural
Goodeve Structural Inc.
18-77, Rungis Drive, Ottawa ON K2H 1P8
T 613 226-6556 goodevestructural.ca

ARCHITECTURE DE PAYSAGE / Landscape Architect
James B. Lennox & Associates
3332, Carling Avenue, Ottawa ON K2H 5A8
T 613 722-5168 jba.ca

CIVIL / Civil
Novatech Eng. Consultants Ltd.
240, Michael Cowland Drive, Suite 200, Ottawa ON K2M 1P8
T 613 234-9643 novatech-eng.com

ARCHITECTES / Architect
NEUF architect(e)s SENCRL
630, boul. René-Lévesque O. 3^e étage, Montréal QC H3B 1S6
T 514 847 1117 NEUFarchitectes.com

SCEAU / Seal



OUVRAGE / Project
1200 MARITIME WAY (KANATA RENTAL)

EMPLACEMENT / Location
OTTAWA

NO	REVISION	DATE (aa-mm-ii)
A	FOR INFORMATION	2021.05.17
B	PER CITY COMMENTS	2021.11.11
C	REVISED SITE PLAN	2022.03.28
D	REVISED SITE PLAN - COORDINATION	2022.04.07
E	PER CITY COMMENTS	2022.06.03
F	SITE PLAN APPROVAL	2023.05.16

DESSINÉ PAR / Drawn by
PV

DATE (aa.mm.ii)
NOV 2018

TITRE DU DESSIN / Drawing Title
BUILDING CROSS SECTION

VÉRIFIÉ PAR / Checked
LH

ÉCHELLE / Scale
1 : 200

RÉVISION / Revision
F

NO. DESSIN / Dwg Number
A300

#18348

D07-12-21-0017

C:\Fichiers Revit\Locaux\12371_ARCH_OPTION 9_R20_pascalvendette.rvt

EXTERIOR FINISH LEGEND	
NOTE	DESCRIPTION
A	PRECAST CONCRETE - LIGHT GREY
B	PRECAST CONCRETE - CHARCOAL
C	SEALED THERMAL UNIT / ALUMINUM FRAME
D	GLASS SPANDREL PANEL
E	METAL PANEL CLADDING - COLOR TO MATCH ADJACENT MATERIAL
F	ALUMINUM GUARD RAIL WITH TEMPERED GLASS
G	METAL SIDING

Allison Hamlin

ALLISON HAMLIN
MANAGER (A), DEVELOPMENT REVIEW WEST
PLANNING, REAL ESTATE & ECONOMIC DEVELOPMENT
DEPARTMENT, CITY OF OTTAWA

APPROVED
 By Allison Hamlin at 9:27 am, Dec 12, 2023



WEST TOWER - West Elevation

1 : 200

1
A400

NOTES GÉNÉRALES / General Notes

- Ces documents d'architecture sont la propriété exclusive de NEUF architect(e)s et ne pourront être utilisés, reproduits ou copiés sans autorisation écrite préalable. / These architectural documents are the exclusive property of NEUF architect(e)s and cannot be used, copied or reproduced without written pre-authorization.
- Les dimensions apparaissant sur ces documents doivent être vérifiées par l'entrepreneur avant le début des travaux. / All dimensions which appear on the documents must be verified by the contractor before to start the work.
- Veuillez aviser l'architecte de toute dimension en sur et en dessous des dimensions indiquées sur ces documents. / The architect must be notified of all errors, omissions and discrepancies between these documents and those of the others professionals.
- Les dimensions sur ces documents doivent être lues et non mesurées. / The dimensions on these documents must be read and not measured.

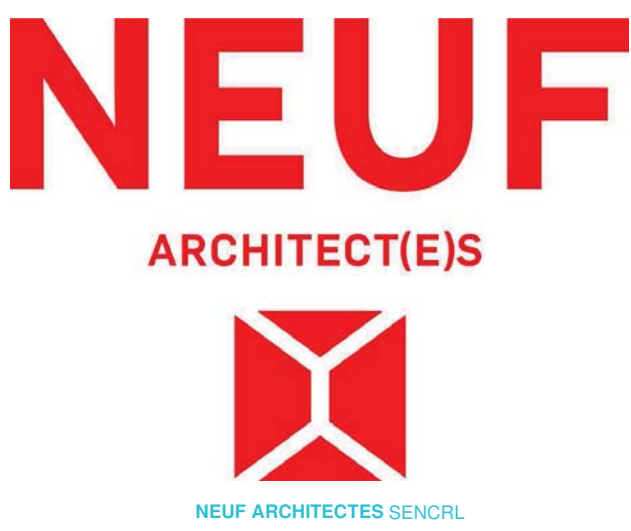
STRUCTURE Structural
Goodeve Structural Inc.
 19-77, Angus Drive, Ottawa ON K2E 7Z7
 T 613 226-6556 goodevestructural.ca

ARCHITECTURE DE PAYSAGE Landscape Architect
James B. Lennox & Associates
 3332, Carling Avenue, Ottawa ON K2H 5A8
 T 613 722-5168 jbla.ca

CIVIL Civil
Novatech Eng. Consultants Ltd.
 240, Michael Cowland Drive, Suite 200, Ottawa ON K2M 1P6
 T 613 234-9643 novatech-eng.com

ARCHITECTES Architect
NEUF architect(e)s SENCRL
 630, boul. René-Lévesque O. 3^e étage, Montréal QC H3B 1S6
 T 514 847 1117 NEUFarchitectes.com

SCEAU / Seal



CLIENT Client



OUVRAGE Project
1200 MARITIME WAY
(KANATA RENTAL)

EMPLACEMENT Location NO PROJET No.
 OTTAWA 12371.00

NO	RÉVISION	DATE (aa-mm-ij)
A	SITE PLAN COORDINATION	2020.12.08
B	SITE PLAN COORDINATION	2020.12.16
C	PER CITY COMMENTS	2021.11.11
D	UPDATED COLOR ELEVATIONS	2021.11.26
E	REVISED SITE PLAN	2022.03.28
F	REVISED SITE PLAN - COORDINATION	2022.04.07
G	PER CITY COMMENTS	2022.06.03
H	FOR COMMENTS	2023.04.13
I	FOR COMMENTS	2023.04.17
J	SITE PLAN APPROVAL	2023.05.16

DESSINÉ PAR Drawn by
 MH
 DATE (aa.mm.ij)
 DEC 2020

TITRE DU DESSIN Drawing Title
WEST TOWER
WEST ELEVATION

NO. DESSIN Dwg Number
A400
 #18348

RÉVISION Revision

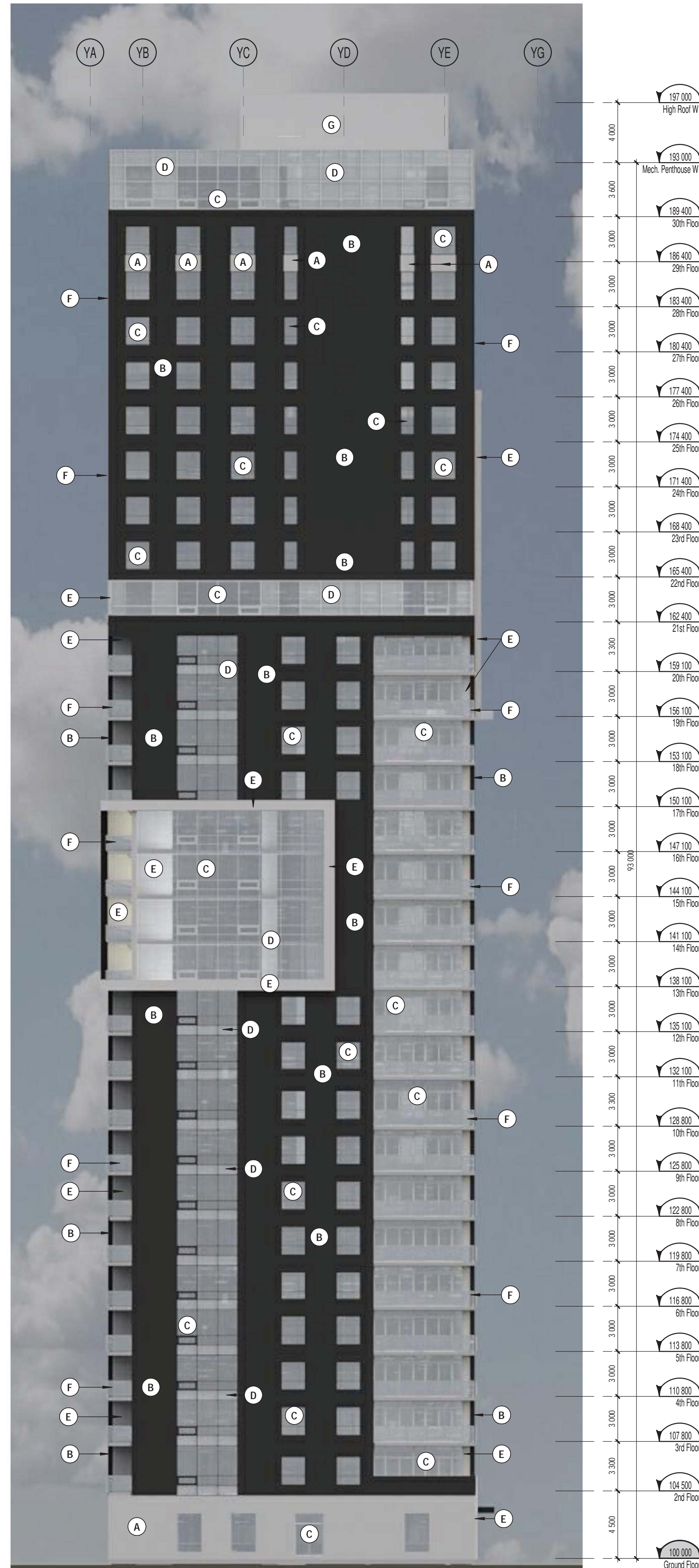
VERIFIÉ PAR Checked
 LH
 ECHELLE Scale
 1 : 200

EXTERIOR FINISH LEGEND	
NOTE	DESCRIPTION
A	PRECAST CONCRETE - LIGHT GREY
B	PRECAST CONCRETE - CHARCOAL
C	SEALED THERMAL UNIT / ALUMINUM FRAME
D	GLASS SPANDREL PANEL
E	METAL PANEL CLADDING - COLOR TO MATCH ADJACENT MATERIAL
F	ALUMINUM GUARD RAIL WITH TEMPERED GLASS
G	METAL SIDING

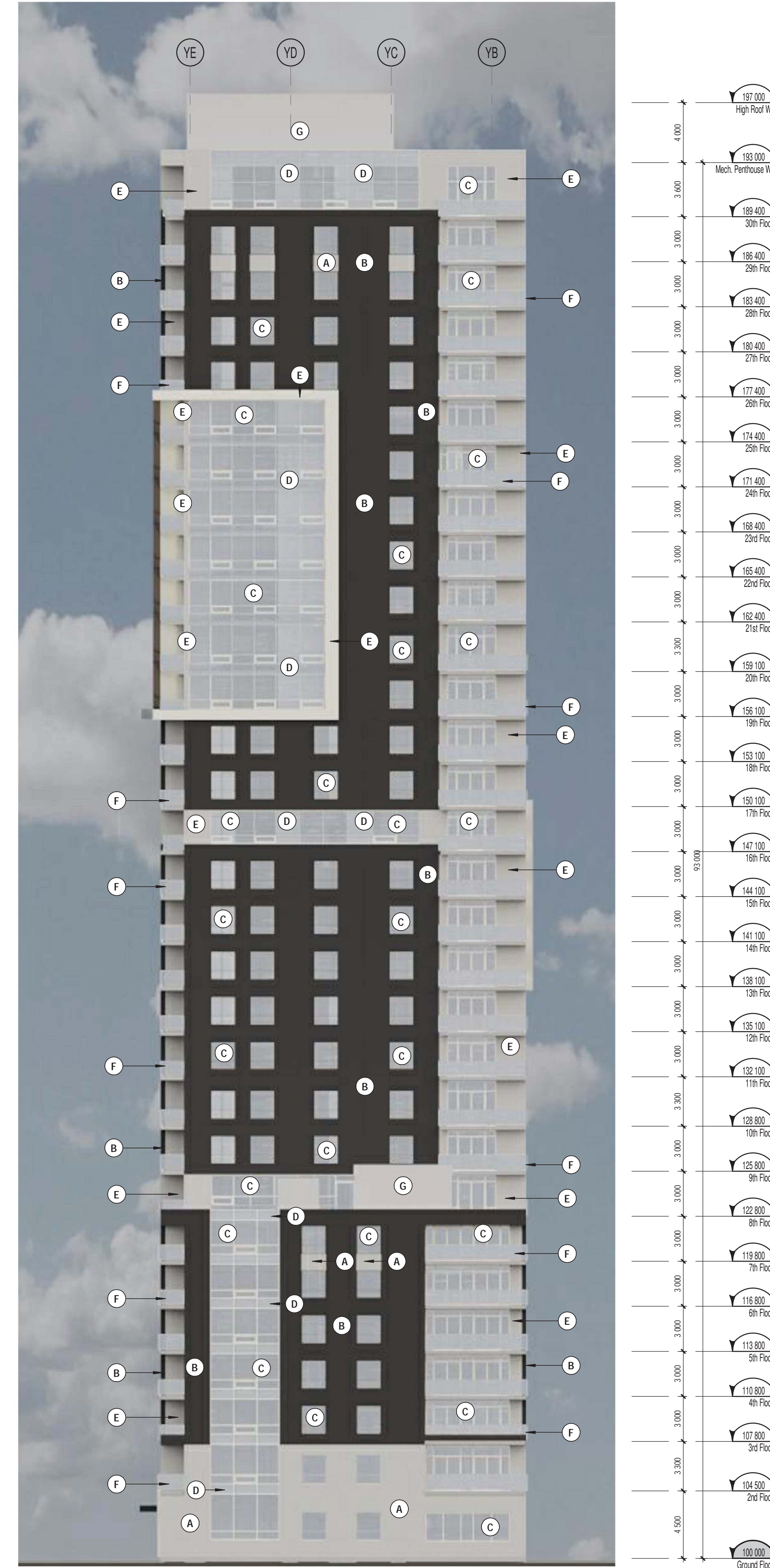
Allison Hamlin

ALLISON HAMLIN
MANAGER (A), DEVELOPMENT REVIEW WEST
PLANNING, REAL ESTATE & ECONOMIC DEVELOPMENT
DEPARTMENT, CITY OF OTTAWA

APPROVED
 By Allison Hamlin at 9:27 am, Dec 12, 2023



WEST TOWER - South Elevation 1
 1 : 200 A401



WEST TOWER - North Elevation 2
 1 : 200 A401

NOTES GÉNÉRALES / General Notes

1. Ces documents d'architecture sont la propriété exclusive de NEUF architect(e)s et ne pourront être utilisés, reproduits ou copiés sans autorisation écrite préalable. / These architectural documents are the exclusive property of NEUF architect(e)s and cannot be used, copied or reproduced without written pre-authorization.
2. Les dimensions apparaissant aux documents doivent être vérifiées par l'entrepreneur avant le début des travaux. / All dimensions which appear on the documents must be verified by the contractor before to start the work.
3. Veuillez aviser l'architecte de toute dimension enrou et/ou divergence entre ces documents et ceux des autres professionnels. / The architect must be notified of all errors, omissions and discrepancies between these documents and those of the others professionals.
4. Les dimensions sur ces documents doivent être lues et non mesurées. / The dimensions on these documents must be read and not measured.

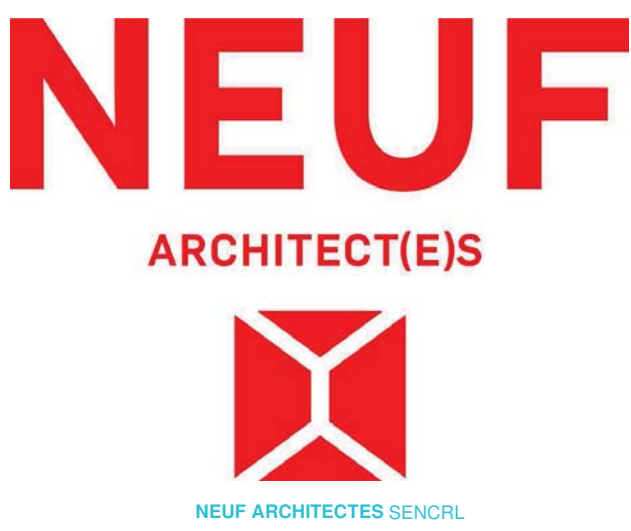
STRUCTURE Structural
Goodeve Structural Inc.
 19-77, Aruga Drive, Ottawa ON K2E 7Z7
 T 613 226-8558 goodevestructural.ca

ARCHITECTURE DE PAYSAGE Landscape Architect
James B. Lennox & Associates
 3332, Carling Avenue, Ottawa ON K2H 5A8
 T 613 722 5168 jbla.ca

CIVIL Civil
Novatech Eng. Consultants Ltd.
 240, Michael Cowland Drive, Suite 200, Ottawa ON K2M 1P6
 T 613 234 9643 novatech-eng.com

ARCHITECTES Architect
NEUF architect(e)s SENCRL
 630, boul. René-Lévesque O. 3^e étage, Montréal QC H3B 1S6
 T 514 847 1117 NEUFarchitectes.com

SCEAU / Seal



CLIENT Client



OUVRAGE Project
1200 MARITIME WAY
(KANATA RENTAL)

EMPLACEMENT Location NO PROJET No.
 OTTAWA 12371.00

NO	REVISION	DATE (aa-mm-ii)
A	SITE PLAN COORDINATION	2020.12.08
B	SITE PLAN COORDINATION	2020.12.16
C	PER CITY COMMENTS	2021.11.11
D	UPDATED COLOR ELEVATIONS	2021.11.26
E	REVISED SITE PLAN	2022.03.28
F	REVISED SITE PLAN - COORDINATION	2022.04.07
G	PER CITY COMMENTS	2022.06.03
H	FOR COMMENTS	2023.04.13
I	FOR COMMENTS	2023.04.17
J	SITE PLAN APPROVAL	2023.05.16

DESSINÉ PAR Drawn by
 MH LH
 DATE (aa.mm.ii) 12/08/20
 ÉCHELLE Scale
 1 : 200

TITRE DU DESSIN Drawing Title
WEST TOWER
NORTH & SOUTH ELEV.

REVISION Revision NO. DESSIN Dwg Number
J A401

#18348

EXTERIOR FINISH LEGEND	
NOTE	DESCRIPTION
A	PRECAST CONCRETE - LIGHT GREY
B	PRECAST CONCRETE - CHARCOAL
C	SEALED THERMAL UNIT / ALUMINUM FRAME
D	GLASS SPANDREL PANEL
E	METAL PANEL CLADDING - COLOR TO MATCH ADJACENT MATERIAL
F	ALUMINUM GUARD RAIL WITH TEMPERED GLASS
G	METAL SIDING

Allison Hamlin

ALLISON HAMLIN
MANAGER (A), DEVELOPMENT REVIEW WEST
PLANNING, REAL ESTATE & ECONOMIC DEVELOPMENT
DEPARTMENT, CITY OF OTTAWA

APPROVED
 By Allison Hamlin at 9:27 am, Dec 12, 2023



WEST TOWER - East Elevation

1 : 200

1
A402

NOTES GÉNÉRALES / General Notes

1. Ces documents d'architecture sont la propriété exclusive de NEUF architectes et ne pourront être utilisés, reproduits ou copiés sans autorisation écrite préalable. / These architectural documents are the exclusive property of NEUF architectes and cannot be used, copied or reproduced without written pre-authorization.
2. Les dimensions apparaissant aux documents doivent être vérifiées par l'entrepreneur avant le début des travaux. / All dimensions which appear on the documents must be verified by the contractor before to start the work.
3. Veuillez aviser l'architecte de toute dimension enrou et/ou divergence entre ces documents et ceux des autres professionnels. / The architect must be notified of all errors, omissions and discrepancies between these documents and those of the others professionals.
4. Les dimensions sur ces documents doivent être lues et non mesurées. / The dimensions on these documents must be read and not measured.

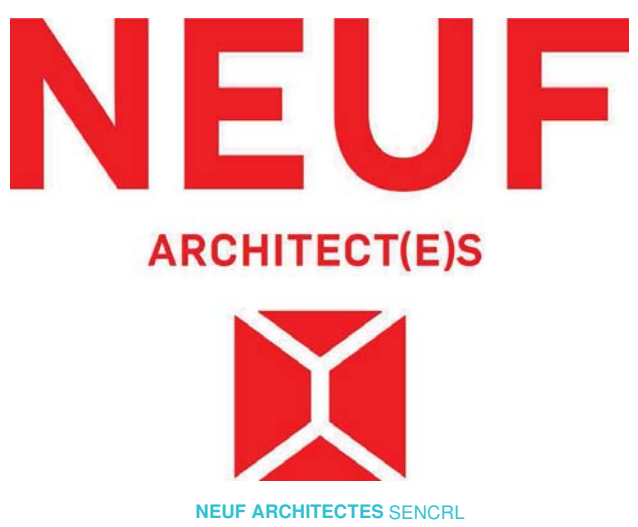
STRUCTURE Structural
Goodeve Structural Inc.
 19-77, Rungis Drive, Ottawa ON K2E 7Z7
 T 613 226-8558 goodevestructural.ca

ARCHITECTURE DE PAYSAGE Landscape Architect
James B. Lennox & Associates
 3332, Carling Avenue, Ottawa ON K2H 5A8
 T 613 722-5168 jbla.ca

CIVIL Civil
Novatech Eng. Consultants Ltd.
 240, Michael Cowland Drive, Suite 200, Ottawa ON K2M 1P6
 T 613 234-9643 novatech-eng.com

ARCHITECTES Architect
NEUF architect(e)s SENCRL
 630, boul. René-Lévesque O. 3^e étage, Montréal QC H3B 1S6
 T 514 847 1117 NEUFarchitectes.com

SCEAU / Seal



CLIENT Client



OUVRAGE Project
1200 MARITIME WAY
(KANATA RENTAL)

EMPLACEMENT Location NO PROJET No.
 OTTAWA 12371.00

NO	REVISION	DATE (aa-mm-ii)
A	SITE PLAN COORDINATION	2020.12.08
B	SITE PLAN COORDINATION	2020.12.16
C	PER CITY COMMENTS	2021.11.11
D	UPDATED COLOR ELEVATIONS	2021.11.26
E	REVISED SITE PLAN	2022.03.28
F	REVISED SITE PLAN - COORDINATION	2022.04.07
G	PER CITY COMMENTS	2022.06.03
H	FOR COMMENTS	2023.04.13
I	FOR COMMENTS	2023.04.17
J	SITE PLAN APPROVAL	2023.05.16

DESSINÉ PAR Drawn by VERIFIÉ PAR Checked
 MH LH
 DATE (aa.mm.ii) 12/08/20 ÉCHELLE Scale
 1 : 200

TITRE DU DESSIN Drawing Title
WEST TOWER
EAST ELEVATION

RÉVISION Revision NO. DESSIN Dwg Number
J A402

#18348

EXTERIOR FINISH LEGEND	
NOTE	DESCRIPTION
A	PRECAST CONCRETE - LIGHT GREY
B	PRECAST CONCRETE - CHARCOAL
C	SEALED THERMAL UNIT / ALUMINUM FRAME
D	GLASS SPANDREL PANEL
E	METAL PANEL CLADDING - COLOR TO MATCH ADJACENT MATERIAL
F	ALUMINUM GUARD RAIL WITH TEMPERED GLASS
G	METAL SIDING

Allison Hamlin

ALLISON HAMLIN
MANAGER (A), DEVELOPMENT REVIEW WEST
PLANNING, REAL ESTATE & ECONOMIC DEVELOPMENT
DEPARTMENT, CITY OF OTTAWA

APPROVED
 By Allison Hamlin at 9:27 am, Dec 12, 2023



EAST TOWER - West Elevation

1:200

1
A403

NOTES GÉNÉRALES / General Notes

1. Ces documents d'architecture sont la propriété exclusive de NEUF architect(e)s et ne pourront être utilisés, reproduits ou copiés sans autorisation écrite préalable. / These architectural documents are the exclusive property of NEUF architect(e)s and cannot be used, copied or reproduced without written pre-authorization.
2. Les dimensions apparaissant sur ces documents doivent être vérifiées par l'entrepreneur avant le début des travaux. / All dimensions which appear on the documents must be verified by the contractor before to start the work.
3. Veuillez aviser l'architecte de toute dimension en erreur et/ou divergence entre ces documents et ceux des autres professionnels. / The architect must be notified of all errors, omissions and discrepancies between these documents and those of the others professionals.
4. Les dimensions sur ces documents doivent être lues et non mesurées. / The dimensions on these documents must be read and not measured.

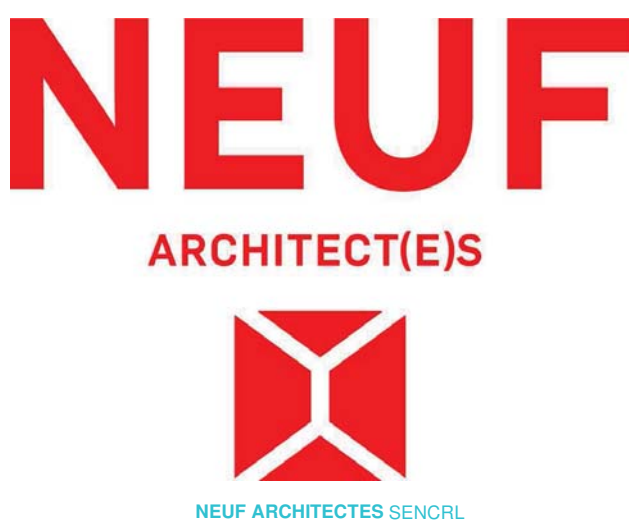
STRUCTURE Structural
Goodeve Structural Inc.
 19-77, Aruga Drive, Ottawa ON K2E 7Z7
 T 613 226-6558 goodevestructural.ca

ARCHITECTURE DE PAYSAGE Landscape Architect
James B. Lennox & Associates
 3332, Carling Avenue, Ottawa ON K2H 5A8
 T 613 722-5168 jba.ca

CIVIL Civil
Novatech Eng. Consultants Ltd.
 240, Michael Cowland Drive, Suite 200, Ottawa ON K2M 1P6
 T 613 234-9643 novatech-eng.com

ARCHITECTES Architect
NEUF architect(e)s SENCRL
 630, boul. René-Lévesque O. 3^{es} étages, Montréal QC H3B 1S6
 T 514 847 1117 NEUFarchitectes.com

SCEAU / Seal



CLIENT Client



OUVRAGE Project
1200 MARITIME WAY
(KANATA RENTAL)

EMPLACEMENT Location NO PROJET No.
 OTTAWA 12371.00

NO	REVISION	DATE (aa-mm-ii)
A	SITE PLAN COORDINATION	2020.12.08
B	SITE PLAN COORDINATION	2020.12.16
C	PER CITY COMMENTS	2021.11.11
D	UPDATED COLOR ELEVATIONS	2021.11.26
E	REVISED SITE PLAN	2022.03.28
F	REVISED SITE PLAN - COORDINATION	2022.04.07
G	PER CITY COMMENTS	2022.06.03
H	FOR COMMENTS	2023.04.13
I	FOR COMMENTS	2023.04.17
J	SITE PLAN APPROVAL	2023.05.16

DESSINÉ PAR Drawn by
 MH VERIFIÉ PAR Checked
 LH
 DATE (aa.mm.ii) 12/08/20 ECHELLE Scale
 1 : 200

TITRE DU DESSIN Drawing Title
EAST TOWER
WEST ELEVATION

RÉVISION Revision NO. DESSIN Dwg Number
J A403

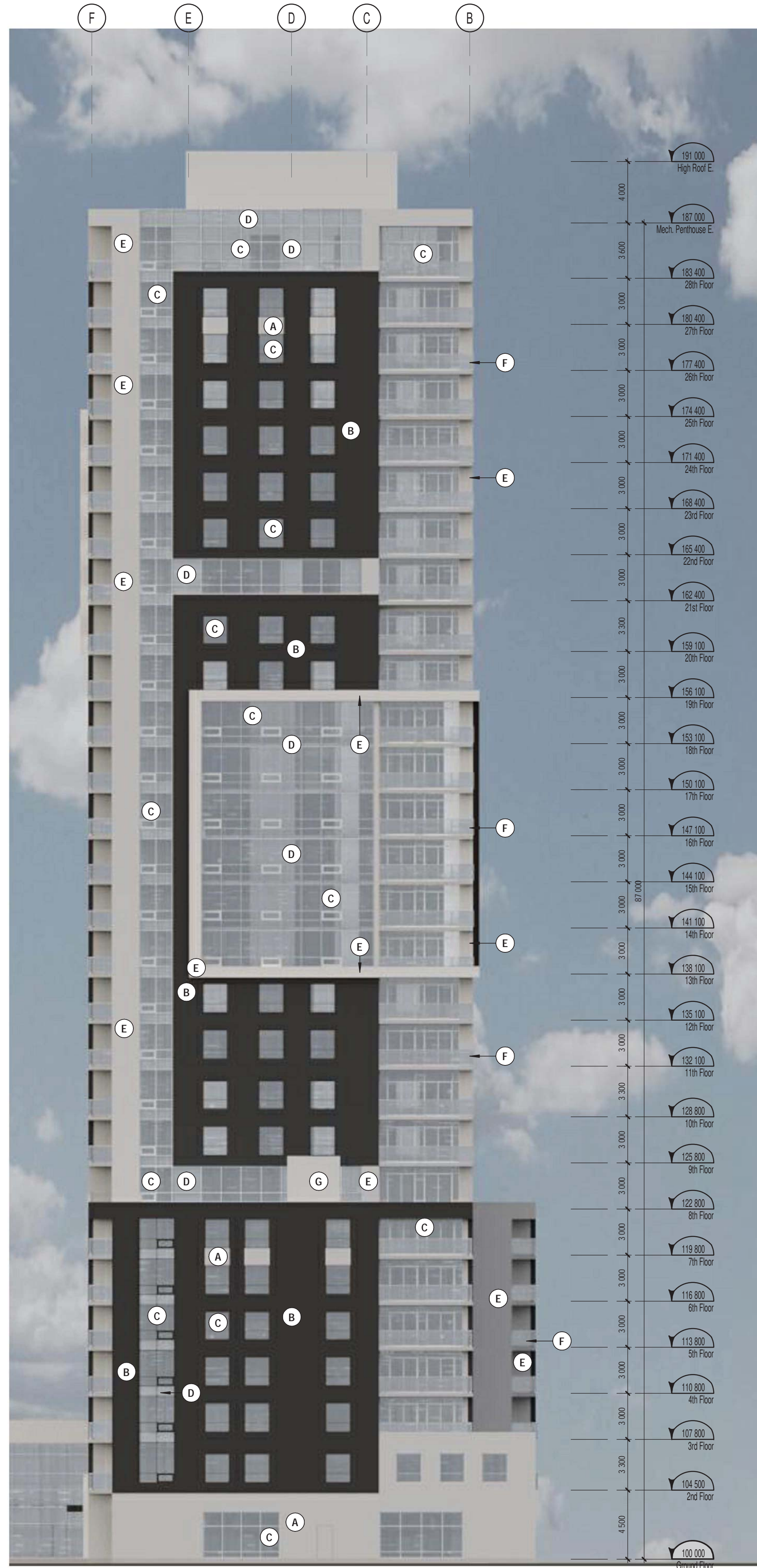
#18348

EXTERIOR FINISH LEGEND	
NOTE	DESCRIPTION
A	PRECAST CONCRETE - LIGHT GREY
B	PRECAST CONCRETE - CHARCOAL
C	SEALED THERMAL UNIT / ALUMINUM FRAME
D	GLASS SPANDREL PANEL
E	METAL PANEL CLADDING - COLOR TO MATCH ADJACENT MATERIAL
F	ALUMINUM GUARD RAIL WITH TEMPERED GLASS
G	METAL SIDING

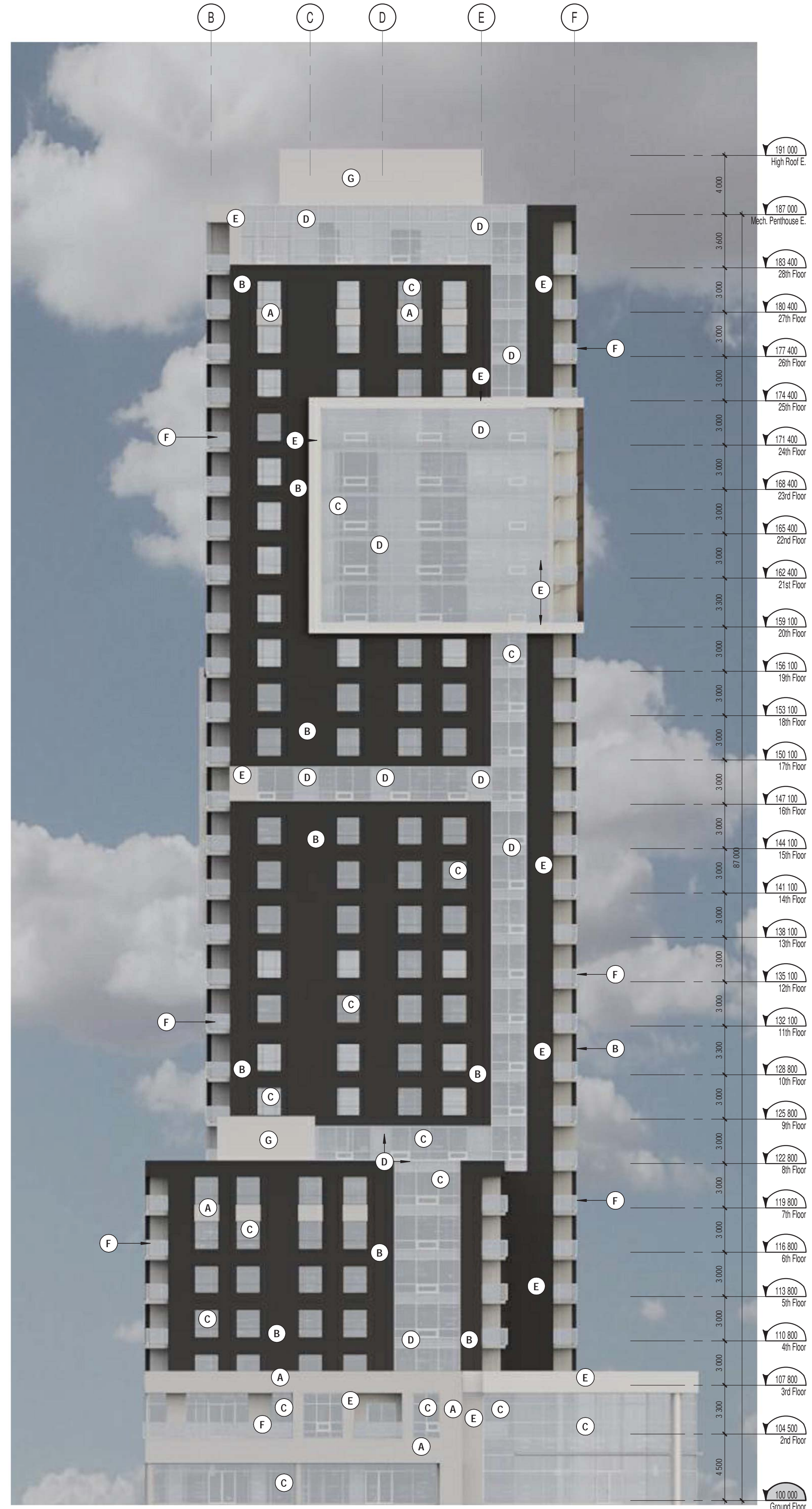
Allison Hamlin

ALLISON HAMLIN
MANAGER (A), DEVELOPMENT REVIEW WEST
PLANNING, REAL ESTATE & ECONOMIC DEVELOPMENT
DEPARTMENT, CITY OF OTTAWA

APPROVED
By Allison Hamlin at 9:27 am, Dec 12, 2023



EAST TOWER - South Elevation
1:200



EAST TOWER - North Elevation
1:200

NOTES GÉNÉRALES / General Notes

- Ces documents d'architecture sont la propriété exclusive de NEUF architect(e)s et ne pourront être utilisés, reproduits ou copiés sans autorisation écrite préalable. / These architectural documents are the exclusive property of NEUF architect(e)s and cannot be used, copied or reproduced without written pre-authorization.
- Les dimensions apparaissant aux documents doivent être vérifiées par l'entrepreneur avant le début des travaux. / All dimensions which appear on the documents must be verified by the contractor before to start the work.
- Veuillez aviser l'architecte de toute dimension erreur et/ou divergence entre ces documents et ceux des autres professionnels. / The architect must be notified of all errors, omissions and discrepancies between these documents and those of the others professionals.
- Les dimensions sur ces documents doivent être lues et non mesurées. / The dimensions on these documents must be read and not measured.

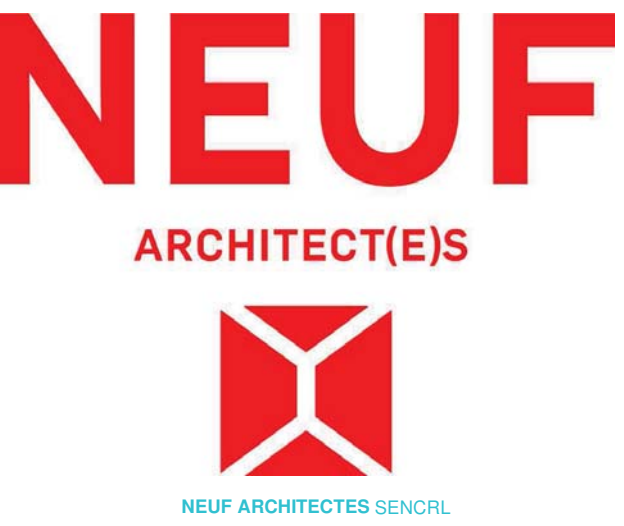
STRUCTURE Structural
Goodeve Structural Inc.
19-77, Angus Drive, Ottawa ON K2E 7Z7
1 613 226-8558 goodevestructural.ca

ARCHITECTURE DE PAYSAGE Landscape Architect
James B. Lennox & Associates
3332 Carling Avenue, Ottawa ON K2H 5A8
1 613 722 5168 jbla.ca

CIVIL Civil
Novatech Eng. Consultants Ltd.
240, Michael Cowland Drive, Suite 200, Ottawa ON K2M 1P6
1 613 234 9643 novatech-eng.com

ARCHITECTES Architect
NEUF architect(e)s SENCRL
630, boul. René-Lévesque O. 3^e étage, Montréal QC H3B 1S6
1 514 847 1117 NEUFarchitectes.com

SCEAU / Seal



OUVRAGE Project
1200 MARITIME WAY (KANATA RENTAL)

EMPLACEMENT Location NO PROJET No.
OTTAWA 12371.00

NO	REVISION	DATE (aa-mm-ii)
A	SITE PLAN COORDINATION	2020.12.08
B	SITE PLAN COORDINATION	2020.12.16
C	PER CITY COMMENTS	2021.11.11
D	UPDATED COLOR ELEVATIONS	2021.11.26
E	REVISED SITE PLAN	2022.03.28
F	REVISED SITE PLAN - COORDINATION	2022.04.07
G	PER CITY COMMENTS	2022.06.03
H	FOR COMMENTS	2023.04.13
I	FOR COMMENTS	2023.04.17
J	SITE PLAN APPROVAL	2023.05.16

DESSINÉ PAR Drawn by
MH LH
DATE (aa.mm.ii) 12/08/20
ÉCHELLE Scale
1 : 200

TITRE DU DESSIN Drawing Title
EAST TOWER NORTH & SOUTH ELEV.

REVISION Revision NO. DESSIN Dwg Number
J A404

#18348

EXTERIOR FINISH LEGEND	
NOTE	DESCRIPTION
A	PRECAST CONCRETE - LIGHT GREY
B	PRECAST CONCRETE - CHARCOAL
C	SEALED THERMAL UNIT / ALUMINUM FRAME
D	GLASS SPANDREL PANEL
E	METAL PANEL CLADDING - COLOR TO MATCH ADJACENT MATERIAL
F	ALUMINUM GUARD RAIL WITH TEMPERED GLASS
G	METAL SIDING

Allison Hamlin

ALLISON HAMLIN
MANAGER (A), DEVELOPMENT REVIEW WEST
PLANNING, REAL ESTATE & ECONOMIC DEVELOPMENT
DEPARTMENT, CITY OF OTTAWA

APPROVED
 By Allison Hamlin at 9:27 am, Dec 12, 2023



EAST TOWER - East Elevation
 1 : 200

1
A405

NOTES GÉNÉRALES / General Notes

1. Ces documents d'architecture sont la propriété exclusive de NEUF architectes et ne pourront être utilisés, reproduits ou copiés sans autorisation écrite préalable. / These architectural documents are the exclusive property of NEUF architectes and cannot be used, copied or reproduced without written pre-authorization.
2. Les dimensions apparaissant sur ces documents doivent être vérifiées par l'entrepreneur avant le début des travaux. / All dimensions which appear on these documents must be verified by the contractor before to start the work.
3. Veuillez aviser l'architecte de toute dimension enrou et/ou divergence entre ces documents et ceux des autres professionnels. / The architect must be notified of all errors, omissions and discrepancies between these documents and those of the others professionals.
4. Les dimensions sur ces documents doivent être lues et non mesurées. / The dimensions on these documents must be read and not measured.

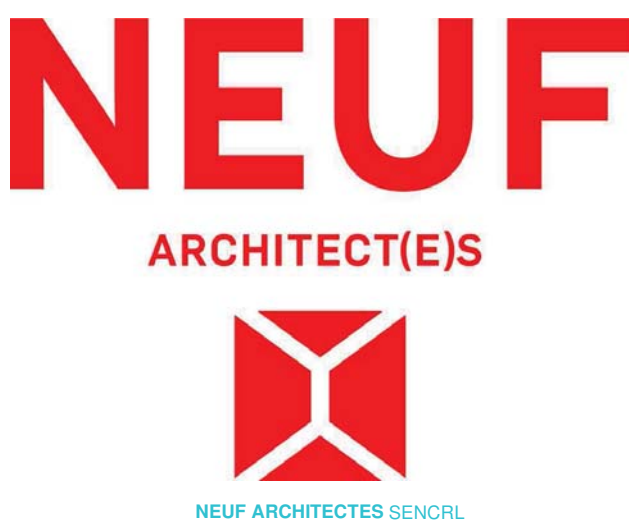
STRUCTURE Structural
Goodeve Structural Inc.
 19-77, Angus Drive, Ottawa ON K2E 7Z7
 T 613 226-8558 goodevestructural.ca

ARCHITECTURE DE PAYSAGE Landscape Architect
James B. Lennox & Associates
 3332, Carling Avenue, Ottawa ON K2H 5A8
 T 613 722-5168 jbla.ca

CIVIL Civil
Novatech Eng. Consultants Ltd.
 240, Michael Cowland Drive, Suite 200, Ottawa ON K2M 1P6
 T 613 234-9643 novatech-eng.com

ARCHITECTES Architect
NEUF architect(e)s SENCRL
 630, boul. René-Lévesque O. 3^e étage, Montréal QC H3B 1S6
 T 514 847-1117 NEUFarchitectes.com

SCEAU / Seal



CLIENT Client



OUVRAGE Project
1200 MARITIME WAY
(KANATA RENTAL)

EMPLACEMENT Location NO PROJET No.
 OTTAWA 12371.00

NO	REVISION	DATE (aa-mm-ii)
A	SITE PLAN COORDINATION	2020.12.08
B	SITE PLAN COORDINATION	2020.12.16
C	PER CITY COMMENTS	2021.11.11
D	UPDATED COLOR ELEVATIONS	2021.11.26
E	REVISED SITE PLAN	2022.03.28
F	REVISED SITE PLAN - COORDINATION	2022.04.07
G	PER CITY COMMENTS	2022.06.03
H	FOR COMMENTS	2023.04.13
I	FOR COMMENTS	2023.04.17
J	SITE PLAN APPROVAL	2023.05.16

DESSINÉ PAR Drawn by
 MH LH
 DATE (aa.mm.ii) 12/08/20
 ÉCHELLE Scale
 1 : 200

TITRE DU DESSIN Drawing Title
EAST TOWER
EAST ELEVATION

RÉVISION Revision NO. DESSIN Dwg Number

J A405
#18348