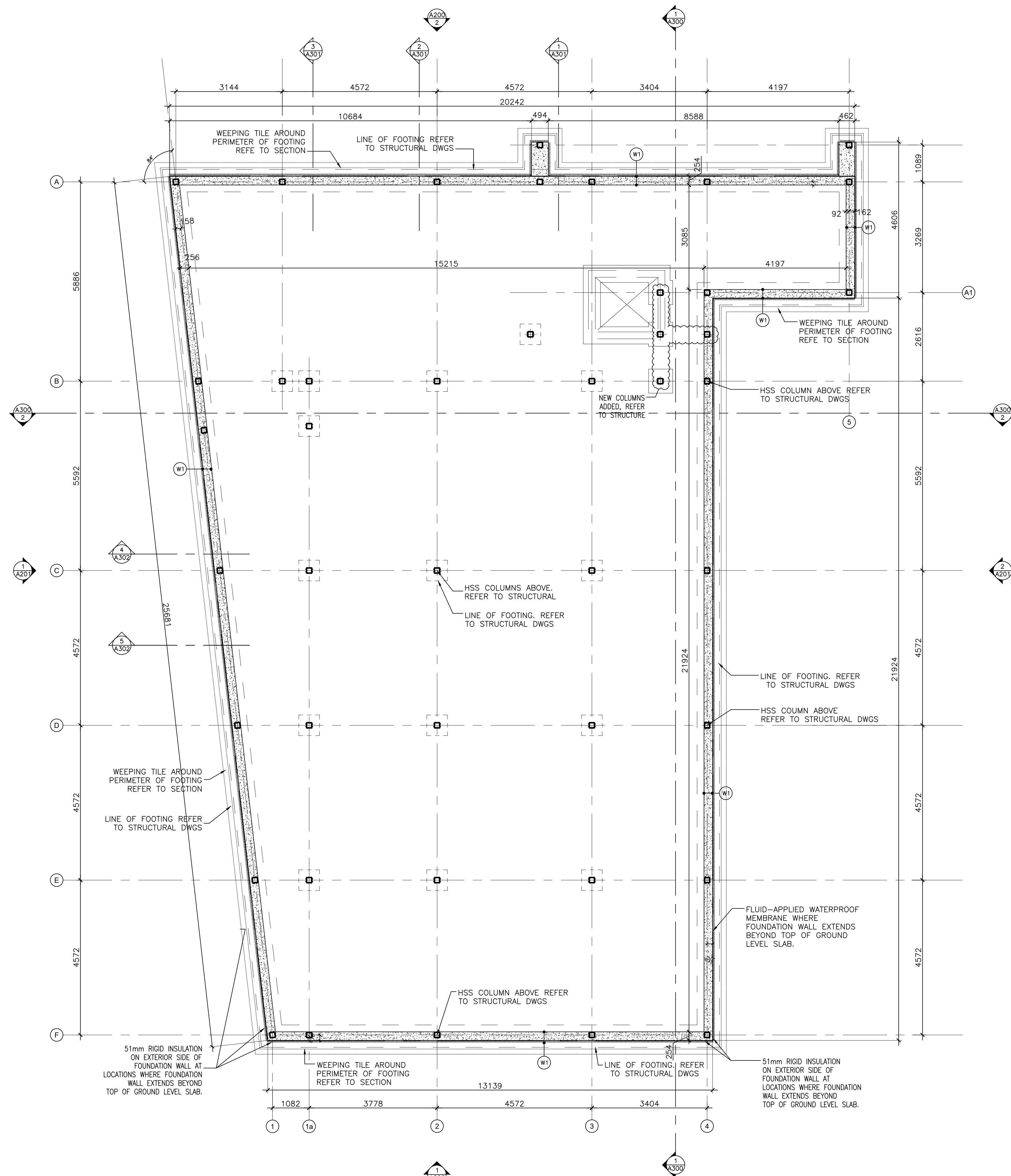


2024-06-18P: 1994 St Joseph (Pickard) 4. Arch Working Drawings\CAD\Floor Plans updated 2024-06-05.dwg



CONSTRUCTION NOTES:

ROOF COMPOSITION:

- (R1) FLAT ROOF / TERRACE BASED ON ASSEMBLY (F28d) OF SB-3 (OBC 2012)
-2" SLOPED RIGID INSULATION
-2 PLY MOD. BIT ROOFING MEMBRANE (WRAP UP AND OVER PARAPET)
-5/8" PLYWOOD ON TAPERED WOOD SLEEPERS, 2% SLOPE TO DRAIN/SCUPPER.
-ENG. JOIST, SEE STRUCTURAL DWGS FOR REQUIREMENTS.
-R50min. ROXUL INSULATION WITHIN FRAMING CAVITY.
-6mil. POLY VAPOUR BARRIER
-7/8" HAT CHANNELS AT 16" O.C.
-2 LAYERS 5/8" SHEETROCK FIRECODE CORE GYPSUM PANELS (EXTERIOR GRADE GWB OR DENS-GLASS GOLD SHEATHING AT EXTERIOR CONDITIONS), PANELS SCREW ATTACH, JOINTS STAGGER AND FINISH
-SEAL ALL GAPS AND PENETRATIONS W/ FIRE-RATED ACOUSTICAL SEALANTS, CONTINUOUS

WALL COMPOSITION:

- (W1) TYPICAL NEW FOUNDATION WALL
-2" RIGID INSULATION (CONTINUOUS BELOW GRADE)
-SELF-ADHERING WATERPROOFING MEMBRANE ON
-POURED CONCRETE
(W2) TYPICAL EXTERIOR WALL (NON-COMBUSTIBLE CONSTRUCTION)
BASED ON ASSEMBLY (S10g) OF SB-3 (OBC 2012)
-7/8" CORRUGATED METAL CLADDING
-1/2" THICK METAL CLADDING + 2" "Z" GIRT
-AIR BARRIER.
-2" ROXUL CAVITY ROCK OR APPROVED EQUIVALENT EXTERIOR INSULATION (CONTINUOUS)
-1 LAYER 5/8" EXTERIOR GRADE TYPE "X" GYPSUM BOARD.
-6" STEEL STUDS @ 16" O.C.
-5.5" ROXUL AFB BATT INSULATION.
-VAPOUR BARRIER
-1 LAYER 5/8" TYPE "X" GYPSUM BOARD
(W3) TYPICAL EXTERIOR WALL (COMBUSTIBLE CONSTRUCTION)
BASED ON ASSEMBLY (FW1g) OF SB-3 (OBC 2012)
-1/2" THICK METAL CLADDING + 2" "Z" GIRT OR 3 1/2" THICK STONE/BRICK VENEER (REFER TO ELEVATIONS FOR MATERIAL LOCATIONS)
-AIR BARRIER.
-2" ROXUL CAVITY ROCK OR APPROVED EQUIVALENT EXTERIOR INSULATION (CONTINUOUS)
-1/2" EXTERIOR GRADE PLYWOOD
-6" STEEL STUDS @ 16" O.C.
-5.5" ROXUL AFB BATT INSULATION.
-VAPOUR BARRIER
-1 LAYER 5/8" TYPE "X" GYPSUM BOARD

PARTITION COMPOSITION:

- (W6) TYPICAL INTERIOR PARTITION
-1/2" G.B. ON BOTH SIDES
(1/2" CEMENT BRD WHERE TILES ARE TO BE APPLIED)
-2" X 6" STEEL STUD @ 16" O.C.
(W7) TYPICAL DEMISING WALL/CORRIDOR PARTITION CONSTRUCTION (F.R.R. : 1hr per ULC Des W317)
-1 LAYER 5/8" SHEETROCK FIRECODE CORE GYPSUM PANELS
-2x6 STEEL STUDS @ 16" O.C. MAX.
-4" THERMAFIBER SAFB, FULL WIDTH AND HEIGHT OF CAVITY
-1 LAYER 5/8" QuietRock 525 PANELS
-SEAL ALL GAPS AND PENETRATIONS W/ FIRE-RATED ACOUSTICAL SEALANTS, CONTINUOUS, BOTH SIDES
-PRIME AND PAINT FINISH (CORRIDOR SIDE)
(W8) TYPICAL INTERIOR LOAD BEARING CONCRETE WALL CONSTRUCTION (F.R.R. : 1hr) ELEVATOR SHAFT WALL ?
-1 LAYER 5/8" GYPSUM BOARD (TYPE X)
-8" POURED CONCRETE
-1 LAYERS 5/8" GYPSUM BOARD (TYPE X)
-SEAL ALL GAPS AND PENETRATIONS W/ FIRE-RATED ACOUSTICAL SEALANTS, CONTINUOUS, BOTH SIDES
-PRIME AND PAINT FINISH (CORRIDOR SIDE)

FLOOR COMPOSITION:

- (F1) TYPICAL CONCRETE SLAB ON GRADE (F.R.R. : N/A)
-FLOOR FINISH: PAINT AND SEAL. SEE ALSO FINISH SCHEDULE.
-5" POURED CONCRETE FLOOR C/W STEEL MESH AND REINFORCING PER STRUCTURAL DWGS.
-VAPOUR BARRIER
-R15 RIGID INSULATION FIRST METER AT PERIMETER, R5 BALANCE.
-2" SAND
-4" GRAVEL
-COMPACTED FILL
(F2) TYPICAL FLOOR CONSTRUCTION (SB-3 WOOD FLOOR JOISTS ASSEMBLY No F28g)
-5/8" OSB SUB-FLOOR,
-WOOD FLOOR FRAMING, REFER TO STRUCTURAL DWGS FOR REQUIREMENTS.
-8" ROXUL INSULATION IN FLOOR CAVITY.
-RESILIENT CHANNELS SPACED AT 16" O/C.
-1/2" TYPE X GYPSUM BOARD.
-SEAL ALL GAPS AND PENETRATIONS W/ FIRE-RATED ACOUSTICAL SEALANTS, CONTINUOUS.
AT SOFFIT CONDITION.
-FILL FLOOR FRAMING CAVITY.
-2" RIGID INSULATION BELOW FLOOR FRAMING.
-PREFINISHED METAL VENTED SOFFIT.

COMMON COMPOSITION NOTES:

- PROVIDE COMPRESSIBLE FOAM GASKET BETWEEN METAL AND CONCRETE.
SET BOTTOM TRACK IN DOUBLE CONTINUOUS BEAD OF SEALANT. SILL AND TOP PLATE IN CONTINUOUS SEALANT.
PROVIDE FIRE-RATED ACOUSTICAL SEALANTS TO CLOSE PERIMETER (TOP, BOTTOM, VERTICAL INTERSECTS) JOINTS AND OPENINGS WHERE MECHANICAL, PLUMBING, ELECTRICAL OR OTHER DEVICES PENETRATE THROUGH SOUND RATED WALLS.
PROVIDE GWB ON FINISHED SIDE ONLY AT CHASES/FURRED SITUATIONS.
PROVIDE MOISTURE RESISTANT (MR) GWB AT ALL WET AREAS AND AREAS PRONE TO MOISTURE. PROVIDE 3/8" CEMENT BOARD IN WASHROOM AREAS, JANITOR'S CLOSET, WHERE TILE ARE TO BE APPLIED.
PROVIDE PLYWOOD BACKING/WOOD BLOCKING WHERE REQUIRED.
COORDINATE ALL WINDOW AND DOOR ROUGH OPENINGS WITH SCHEDULE AND MANUFACTURER INSTALLATION DETAILS AND RECOMMENDATIONS.

KEY PLAN: Aerial site map showing project location. STAMP: PROJECT SITE, NORTH arrow.

ALL CONTRACTORS TO VERIFY ALL DIMENSIONS ON SITE AND TO REPORT ALL ERRORS AND/OR OMISSIONS TO THE ARCHITECT.
ALL CONTRACTORS MUST COMPLY WITH ALL CODES AND BYLAWS AND OTHER AUTHORITIES HAVING JURISDICTION OVER THE WORK.
DO NOT SCALE DRAWINGS.
THIS DRAWING MAY NOT BE USED FOR CONSTRUCTION UNTIL SIGNED BY THE ARCHITECT.
COPYRIGHT RESERVED.

Revision table with columns for NO., REVISION, and DATE. Includes entries for client review on 06/04/21, 05/31/21, and 04/26/21.

WOODMAN ARCHITECT ASSOCIATES LTD.
201-4 BEECHWOOD AVENUE, OTTAWA, ONTARIO, CANADA K1L8L9
TEL: 613 228 9850. FAX 613 228 9848. mail@woodmanarchitect.com

CONSULTANTS:
STRUCTURAL -
MECHANICAL -
ELECTRICAL -

PROJECT:
1994 ST. JOSEPH, OTTAWA, ON

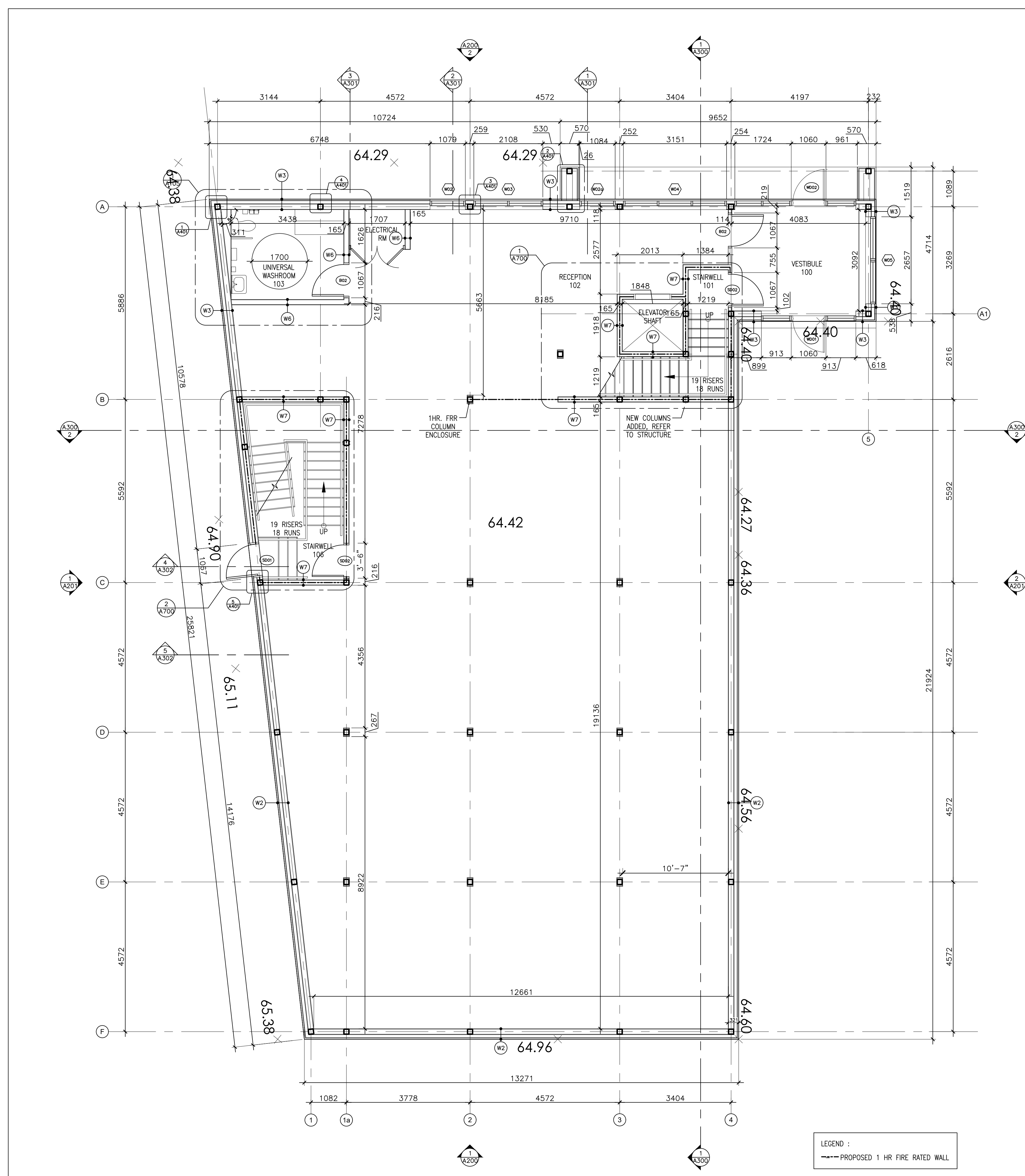
DRAWING:
FOUNDATION PLAN

Metadata table with columns for DATE, SCALE, DRAWN BY, REVIEWED BY, JOB NO., and DRAWING NO.

1 FOUNDATION PLAN
3/16"=1'-0"

D07-12-21-0021

2024-06-18P: 1994 St Joseph (Pickard) v.4. Arch Working Drawings\CAD\Floor Plans updated 2024-06-05.dwg



LEGEND:
 --- PROPOSED 1 HR FIRE RATED WALL

CONSTRUCTION NOTES:

ROOF COMPOSITION:

- R1** FLAT ROOF / TERRACE
 BASED ON ASSEMBLY (F28d) OF SB-3 (OBC 2012)
 - 2 PLY MOD. BIT ROOFING MEMBRANE (WRAP UP AND OVER PARAPET)
 - 5/8" PLYWOOD ON TAPERED WOOD SLEEPERS, 2% SLOPE TO DRAIN/SCUPPER.
 - ENGG. JOIST, SEE STRUCTURAL DWGS FOR REQUIREMENTS.
 - R50min. ROXUL INSULATION WITHIN FRAMING CAVITY
 - 6mil. POLY VAPOUR BARRIER
 - 3/4" HAT CHANNELS AT 16" O.C.
 - 2 LAYERS 5/8" SHEETROCK FIRECODE CORE GYPSUM PANELS (EXTERIOR GRADE GWB OR DENS-GLASS GOLD SHEATHING AT EXTERIOR CONDITIONS), PANELS SCREW ATTACH, JOINTS STAGGER AND FINISH
 - SEAL ALL GAPS AND PENETRATIONS W/ FIRE-RATED ACOUSTICAL SEALANTS, CONTINUOUS

WALL COMPOSITION:

- W1** TYPICAL NEW FOUNDATION WALL
 - 2" RIDID INSULATION (CONTINUOUS BELOW GRADE)
 - SELF-ADHERING WATERPROOFING MEMBRANE ON
 - POURED CONCRETE
- W2** TYPICAL EXTERIOR WALL (NON-COMBUSTIBLE CONSTRUCTION) -
 BASED ON ASSEMBLY (S10a) OF SB-3 (OBC 2012)
 - 7/8" CORRUGATED METAL CLADDING
 - 1/2" THICK METAL CLADDING + 2" "Z" GIRT
 - AIR BARRIER
 - 2" ROXUL CAVITY ROCK OR APPROVED EQUIVALENT EXTERIOR INSULATION (CONTINUOUS)
 - 1 LAYER 5/8" EXTERIOR GRADE TYPE "X" GYPSUM BOARD.
 - 6" STEEL STUDS @ 16" O.C.
 - 5.5" ROXUL AFB BATT INSULATION.
 - VAPOUR BARRIER
 - 1 LAYER 5/8" TYPE "X" GYPSUM BOARD
- W3** TYPICAL EXTERIOR WALL (COMBUSTIBLE CONSTRUCTION) -
 BASED ON ASSEMBLY (EW1a) OF SB-3 (OBC 2012)
 - 1/2" THICK METAL CLADDING + 2" "Z" GIRT
 - OR 3/4" THICK STONE/BRICK VENEER (REFER TO ELEVATIONS FOR MATERIAL LOCATIONS)
 - AIR BARRIER
 - 2" ROXUL CAVITY ROCK OR APPROVED EQUIVALENT EXTERIOR INSULATION (CONTINUOUS)
 - 1/2" EXTERIOR GRADE PLYWOOD
 - 6" STEEL STUDS @ 16" O.C.
 - 5.5" ROXUL AFB BATT INSULATION.
 - VAPOUR BARRIER
 - 1 LAYER 5/8" TYPE "X" GYPSUM BOARD

PARTITION COMPOSITION:

- W6** TYPICAL INTERIOR PARTITION
 - 1/2" G.B. ON BOTH SIDES
 - (1/2" CEMENT BRD WHERE TILES ARE TO BE APPLIED)
 - 2" X 6" STEEL STUD @ 16" O.C.
- W7** TYPICAL DEMISING WALL/CORRIDOR PARTITION CONSTRUCTION
 (F.R.R. : 1hr per ULC Des W317)
 - 1 LAYER 5/8" SHEETROCK FIRECODE CORE GYPSUM PANELS
 - 2x6 STEEL STUDS @ 16" O.C. MAX.
 - 4" THERMAFIBER SAFB, FULL WIDTH AND HEIGHT OF CAVITY
 - 1 LAYER 5/8" QuietRock 525 PANELS
 - SEAL ALL GAPS AND PENETRATIONS W/ FIRE-RATED ACOUSTICAL SEALANTS, CONTINUOUS, BOTH SIDES
 - PRIME AND PAINT FINISH (CORRIDOR SIDE)
- W8** TYPICAL INTERIOR LOAD BEARING CONCRETE WALL CONSTRUCTION
 (F.R.R. : 1hr) ELEVATOR SHAFT WALL ?
 - 1 LAYER 5/8" GYPSUM BOARD (TYPE X)
 - 8" POURED CONCRETE
 - 1 LAYERS 5/8" GYPSUM BOARD (TYPE X)
 - SEAL ALL GAPS AND PENETRATIONS W/ FIRE-RATED ACOUSTICAL SEALANTS, CONTINUOUS, BOTH SIDES
 - PRIME AND PAINT FINISH (CORRIDOR SIDE)

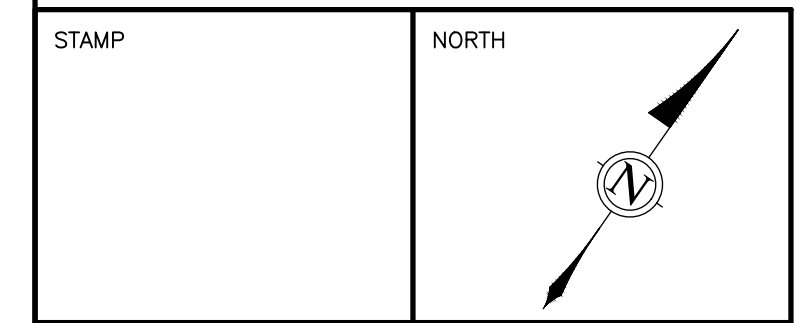
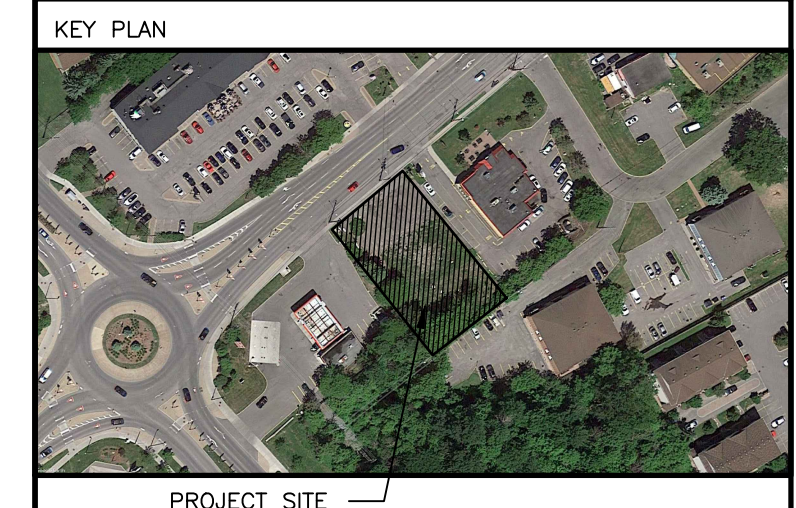
FLOOR COMPOSITION:

- F1** TYPICAL CONCRETE SLAB ON GRADE
 (F.R.R. : N/A)
 - FLOOR FINISH: PAINT AND SEAL. SEE ALSO FINISH SCHEDULE.
 - 5" POURED CONCRETE FLOOR C/W STEEL MESH AND REINFORING PER STRUCTURAL DWGS.
 - VAPOUR BARRIER
 - R15 RIGID INSULATION FIRST METER AT PERIMETER, R5 BALANCE.
 - 2" SAND
 - 4" GRAVEL
 - COMPACTED FILL
- F2** TYPICAL FLOOR CONSTRUCTION
 (SB-3 WOOD FLOOR JOISTS ASSEMBLY No F28g)
 - 5/8" OSB SUB-FLOOR,
 - WOOD FLOOR FRAMING, REFER TO STRUCTURAL DWGS FOR REQUIREMENTS.
 - 8" ROXUL INSULATION IN FLOOR CAVITY.
 - RESILIENT CHANNELS SPACED AT 16" O/C.
 - 1/2" TYPE X GYPSUM BOARD.
 - SEAL ALL GAPS AND PENETRATIONS W/ FIRE-RATED ACOUSTICAL SEALANTS, CONTINUOUS.

AT SOFFIT CONDITION:
 -FILL FLOOR FRAMING CAVITY.
 -2" RIGID INSULATION BELOW FLOOR FRAMING.
 -PREFINISHED METAL VENTED SOFFIT.

COMMON COMPOSITION NOTES:

- PROVIDE COMPRESSIBLE FOAM GASKET BETWEEN METAL AND CONCRETE.
- SET BOTTOM TRACK IN DOUBLE CONTINUOUS BEAD OF SEALANT. SILL AND TOP PLATE IN CONTINUOUS SEALANT.
- PROVIDE FIRE-RATED ACOUSTICAL SEALANTS TO CLOSE PERIMETER (TOP, BOTTOM, VERTICAL INTERSECTS) JOINTS AND OPENINGS WHERE MECHANICAL, PLUMBING, ELECTRICAL OR OTHER DEVICES PENETRATE THROUGH SOUND RATED WALLS.
- PROVIDE GWB ON FINISHED SIDE ONLY AT CHASES/FURRED SITUATIONS.
- PROVIDE MOISTURE RESISTANT (MR) GWB AT ALL WET AREAS AND AREAS PRONE TO MOISTURE. PROVIDE 5/8" CEMENT BOARD IN WASHROOM AREAS, JANITOR'S CLOSET, WHERE TILE ARE TO BE APPLIED.
- PROVIDE PLYWOOD BACKING/WOOD BLOCKING WHERE REQUIRED.
- COORDINATE ALL WINDOW AND DOOR ROUGH OPENINGS WITH SCHEDULE AND MANUFACTURER INSTALLATION DETAILS AND RECOMMENDATIONS.



ALL CONTRACTORS TO VERIFY ALL DIMENSIONS ON SITE AND TO REPORT ALL ERRORS AND/OR OMISSIONS TO THE ARCHITECT.
 ALL CONTRACTORS MUST COMPLY WITH ALL CODES AND BYLAWS AND OTHER AUTHORITIES HAVING JURISDICTION OVER THE WORK.
 DO NOT SCALE DRAWINGS.
 THIS DRAWING MAY NOT BE USED FOR CONSTRUCTION UNTIL SIGNED BY THE ARCHITECT.
 COPYRIGHT RESERVED.

14		
13		
12		
11		
10		
09		
08		
07		
06		
05		
04		
03	ISSUED FOR CLIENT REVIEW	06/04/21
02	ISSUED FOR CLIENT REVIEW	05/31/21
01	ISSUED FOR CLIENT REVIEW	04/26/21
NO.	REVISION	MM/DD/YY DATE



201-4 BEECHWOOD AVENUE, OTTAWA, ONTARIO, CANADA K1L8P9
 TEL: 613 228 9850. FAX: 613 228 9846. mailbo@woodmanarchitect.com

CONSULTANTS:
 STRUCTURAL -
 MECHANICAL -
 ELECTRICAL -

PROJECT:
 1994 ST. JOSEPH,
 OTTAWA, ON

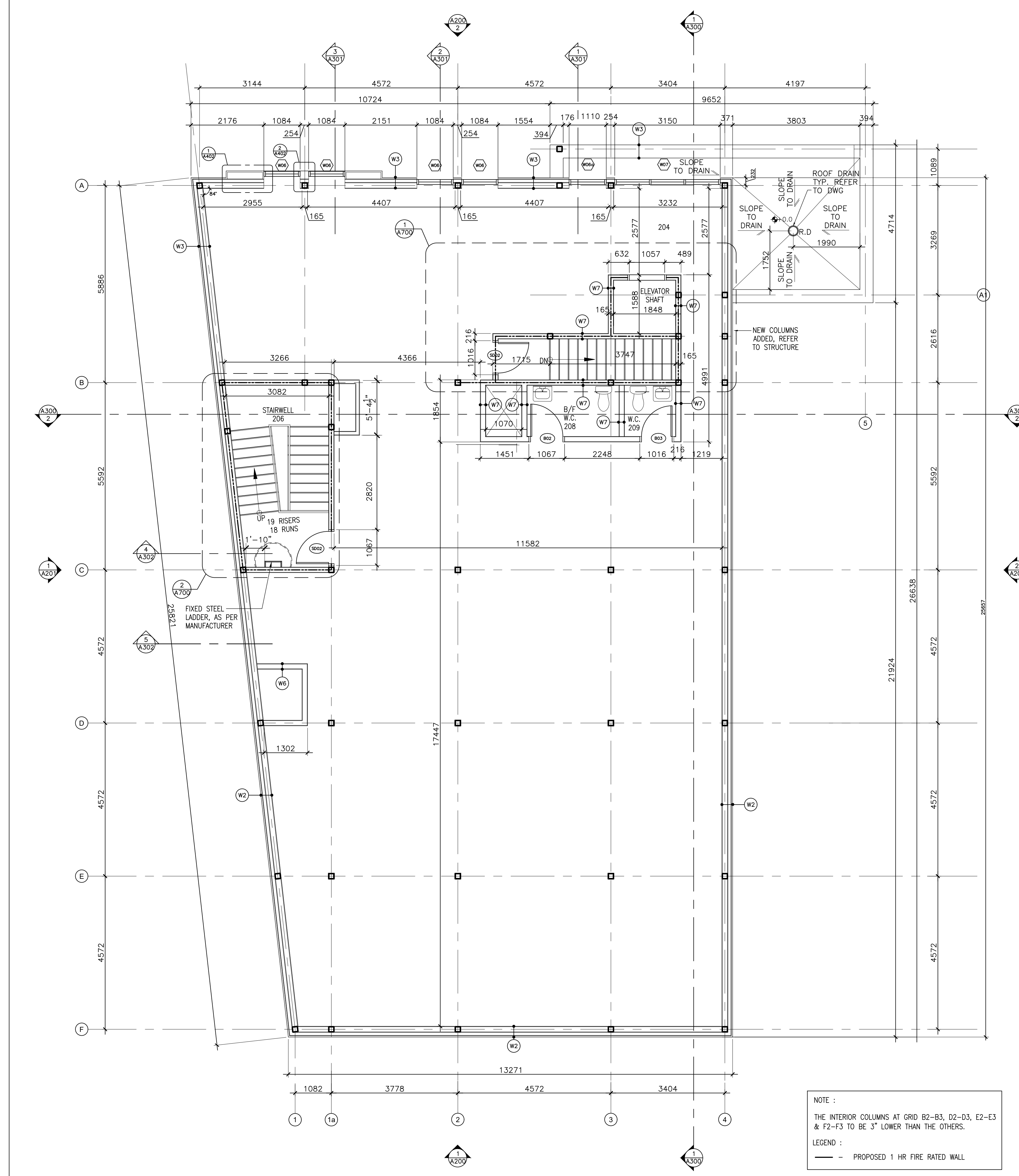
DRAWING:
 GROUND FLOOR PLAN
 BASE BUILDING

DATE	04 JUNE, 2021	JOB NO.	1964
SCALE	AS SHOWN	DRAWING NO.	
DRAWN BY	A.S., S.B.		A-102
REVIEWED BY	R.J.W., R.W.		

1
A102
GROUND FLOOR PLAN
 3/16"=1'-0"

D07-12-21-0021

2024-06-18P:\18P:\1964 - 1994 St Joseph (Pickard)\4. Arch Working Drawings\CAD\Floor Plans updated 2024-06-05-dwg



NOTE :
THE INTERIOR COLUMNS AT GRID B2-B3, D2-D3, E2-E3 & F2-F3 TO BE 3" LOWER THAN THE OTHERS.
LEGEND :
--- PROPOSED 1 HR FIRE RATED WALL

CONSTRUCTION NOTES:

ROOF COMPOSITION:

- (R1) FLAT ROOF / TERRACE**
BASED ON ASSEMBLY (F28d) OF SB-3 (OBC 2012)
 - 2 PLY MOD. BIT ROOFING MEMBRANE (WRAP UP AND OVER PARAPET)
 - 5/8" PLYWOOD ON TAPERED WOOD SLEEPERS, 2% SLOPE TO DRAIN/SCUPPER
 - ENGG. JOIST SEE STRUCTURAL DWGS FOR REQUIREMENTS.
 - R50min. ROXUL INSULATION WITHIN FRAMING CAVITY.
 - 6mil. POLY VAPOUR BARRIER
 - 3/8" HAT CHANNELS AT 16" O.C.
- 2 LAYERS 5/8" SHEETROCK FIRECODE CORE GYPSUM PANELS (EXTERIOR GRADE GWB OR DENS-GLOSS GOLD SHEATHING AT EXTERIOR CONDITIONS), PANELS SCREW ATTACH, JOINTS STAGGER AND FINISH
- SEAL ALL GAPS AND PENETRATIONS W/ FIRE-RATED ACOUSTICAL SEALANTS, CONTINUOUS

COMMON COMPOSITION NOTES:

- PROVIDE COMPRESSIBLE FOAM GASKET BETWEEN METAL AND CONCRETE.
- SET BOTTOM TRACK IN DOUBLE CONTINUOUS BEAD OF SEALANT. SILL AND TOP PLATE IN CONTINUOUS SEALANT.
- PROVIDE FIRE-RATED ACOUSTICAL SEALANTS TO CLOSE PERIMETER (TOP, BOTTOM, VERTICAL INTERSECTS) JOINTS AND OPENINGS WHERE MECHANICAL, PLUMBING, ELECTRICAL OR OTHER DEVICES PENETRATE THROUGH SOUND RATED WALLS.
- PROVIDE GWB ON FINISHED SIDE ONLY AT CHASES/FURRED SITUATIONS.
- PROVIDE MOISTURE RESISTANT (MR) GWB AT ALL WET AREAS AND AREAS PRONE TO MOISTURE. PROVIDE 3/8" CEMENT BOARD IN WASHROOM AREAS, JANITOR'S CLOSET, WHERE TILE ARE TO BE APPLIED.
- PROVIDE PLYWOOD BACKING/WOOD BLOCKING WHERE REQUIRED.
- COORDINATE ALL WINDOW AND DOOR ROUGH OPENINGS WITH SCHEDULE AND MANUFACTURER INSTALLATION DETAILS AND RECOMMENDATIONS.

WALL COMPOSITION:

- (W1) TYPICAL NEW FOUNDATION WALL**
 - 2" RIGID INSULATION (CONTINUOUS BELOW GRADE)
 - SELF-ADHERING WATERPROOFING MEMBRANE ON
 - POURED CONCRETE
- (W2) TYPICAL EXTERIOR WALL (NON-COMBUSTIBLE CONSTRUCTION) -**
BASED ON ASSEMBLY (S10a) OF SB-3 (OBC 2012)
 - 7/8" CORRUGATED METAL CLADDING
 - 1/2" THICK METAL CLADDING + 2" "Z" GIRT
 - AIR BARRIER.
 - 2" ROXUL CAVITY ROCK OR APPROVED EQUIVALENT EXTERIOR INSULATION (CONTINUOUS)
 - 1 LAYER 5/8" EXTERIOR GRADE TYPE "X" GYPSUM BOARD.
 - 6" STEEL STUDS @ 16" O.C.
 - 5.5" ROXUL AFB BATT INSULATION.
 - VAPOUR BARRIER
 - 1 LAYER 5/8" TYPE "X" GYPSUM BOARD
- (W3) TYPICAL EXTERIOR WALL (COMBUSTIBLE CONSTRUCTION) -**
BASED ON ASSEMBLY (EW1a) OF SB-3 (OBC 2012)
 - 1/2" THICK METAL CLADDING + 2" "Z" GIRT OR 3 1/2" THICK STONE/BRICK VENEER (REFER TO ELEVATIONS FOR MATERIAL LOCATIONS)
 - AIR BARRIER.
 - 2" ROXUL CAVITY ROCK OR APPROVED EQUIVALENT EXTERIOR INSULATION (CONTINUOUS)
 - 1/2" EXTERIOR GRADE PLYWOOD
 - 6" STEEL STUDS @ 16" O.C.
 - 5.5" ROXUL AFB BATT INSULATION.
 - VAPOUR BARRIER
 - 1 LAYER 5/8" TYPE "X" GYPSUM BOARD

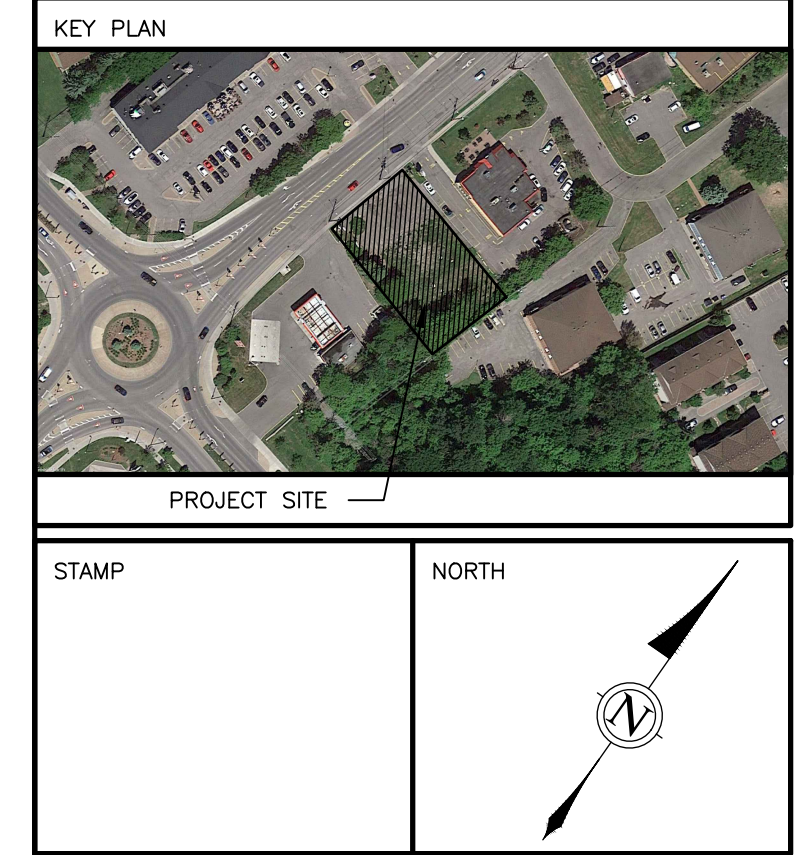
PARTITION COMPOSITION:

- (W6) TYPICAL INTERIOR PARTITION**
 - 1/2" C.B. ON BOTH SIDES
 - (1/2" CEMENT BRD WHERE TILES ARE TO BE APPLIED)
 - 2" x 6" STEEL STUD @ 16" O.C.
- (W7) TYPICAL DEMISING WALL/CORRIDOR PARTITION CONSTRUCTION**
(F.R.R. : 1hr per ULC Des W317)
 - 1 LAYER 5/8" SHEETROCK FIRECODE CORE GYPSUM PANELS
 - 2x6 STEEL STUDS @ 16" O.C. MAX.
 - 4" THERMAFIBER SAFB, FULL WIDTH AND HEIGHT OF CAVITY
 - 1 LAYER 5/8" QuietRock 525 PANELS
 - SEAL ALL GAPS AND PENETRATIONS W/ FIRE-RATED ACOUSTICAL SEALANTS, CONTINUOUS, BOTH SIDES
 - PRIME AND PAINT FINISH (CORRIDOR SIDE)
- (W8) TYPICAL INTERIOR LOAD BEARING CONCRETE WALL CONSTRUCTION**
(F.R.R. : 1hr) ELEVATOR SHAFT WALL ?
 - 1 LAYER 5/8" GYPSUM BOARD (TYPE X)
 - 8" POURED CONCRETE
 - 1 LAYERS 5/8" GYPSUM BOARD (TYPE X)
 - SEAL ALL GAPS AND PENETRATIONS W/ FIRE-RATED ACOUSTICAL SEALANTS, CONTINUOUS, BOTH SIDES
 - PRIME AND PAINT FINISH (CORRIDOR SIDE)

FLOOR COMPOSITION:

- (F1) TYPICAL CONCRETE SLAB ON GRADE**
(F.R.R. : N/A)
 - FLOOR FINISH: PAINT AND SEAL. SEE ALSO FINISH SCHEDULE.
 - 5" POURED CONCRETE FLOOR C/W STEEL MESH AND REINFORCING PER STRUCTURAL DWGS.
 - VAPOUR BARRIER
 - R15 RIGID INSULATION FIRST METER AT PERIMETER, R5 BALANCE.
 - 2" SAND
 - 4" GRAVEL
 - COMPACTED FILL
- (F2) TYPICAL FLOOR CONSTRUCTION**
(SB-3 WOOD FLOOR JOISTS ASSEMBLY No F28g)
 - 5/8" OSB SUB-FLOOR,
 - WOOD FLOOR FRAMING, REFER TO STRUCTURAL DWGS FOR REQUIREMENTS.
 - 8" ROXUL INSULATION IN FLOOR CAVITY.
 - RESILIENT CHANNELS SPACED AT 16" O/C.
 - 1/2" TYPE X GYPSUM BOARD.
 - SEAL ALL GAPS AND PENETRATIONS W/ FIRE-RATED ACOUSTICAL SEALANTS, CONTINUOUS.

AT SOFFIT CONDITION.
-FILL FLOOR FRAMING CAVITY.
-2" RIGID INSULATION BELOW FLOOR FRAMING.
-PREFINISHED METAL VENTED SOFFIT.



ALL CONTRACTORS TO VERIFY ALL DIMENSIONS ON SITE AND TO REPORT ALL ERRORS AND/OR OMISSIONS TO THE ARCHITECT.
ALL CONTRACTORS MUST COMPLY WITH ALL CODES AND BYLAWS AND OTHER AUTHORITIES HAVING JURISDICTION OVER THE WORK.
DO NOT SCALE DRAWINGS.
THIS DRAWING MAY NOT BE USED FOR CONSTRUCTION UNTIL SIGNED BY THE ARCHITECT.
COPYRIGHT RESERVED.

14		
13		
12		
11		
10		
09		
08		
07		
06		
05		
04		
03	ISSUED FOR CLIENT REVIEW	06/04/21
02	ISSUED FOR CLIENT REVIEW	05/31/21
01	ISSUED FOR CLIENT REVIEW	04/26/21
NO.	REVISION	MM/DD/YY DATE

WOODMAN ARCHITECT ASSOCIATES LTD.

201-4 BEECHWOOD AVENUE, OTTAWA, ONTARIO, CANADA K1L8L9
TEL: G13 228 9850. FAX G13 228 9848. mailbo@woodmanarchitect.com

CONSULTANTS:
STRUCTURAL -
MECHANICAL -
ELECTRICAL -

PROJECT:
1994 ST. JOSEPH, OTTAWA, ON

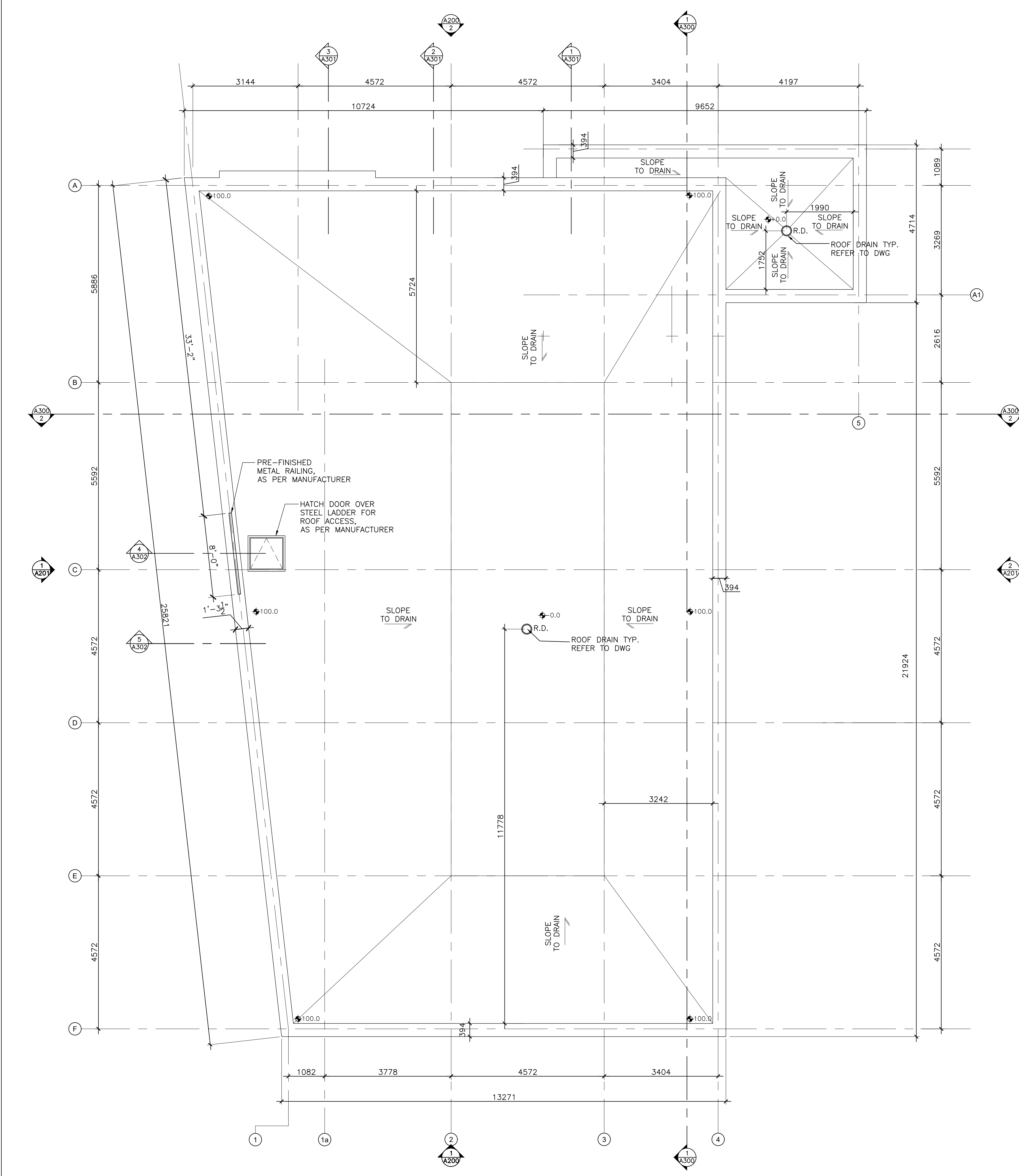
DRAWING:
SECOND FLOOR PLAN BASE BUILDING

DATE	04 JUNE, 2021	JOB NO.	1964
SCALE	AS SHOWN	DRAWING NO.	
DRAWN BY	A.S., S.B.		A-103
REVIEWED BY	R.J.W., R.W.		

1 SECOND FLOOR PLAN
A103 3/16"=1'-0"

D07-12-21-0021

2024-06-18P: 1994 St Joseph (Pickard) 4. Arch Working Drawings\CAD\Floor Plans updated 2024-06-05.dwg



1 ROOF PLAN
A104 3/16"=1'-0"

CONSTRUCTION NOTES:

ROOF COMPOSITION:

R1 FLAT ROOF / TERRACE
BASED ON ASSEMBLY (F28d) OF SB-3 (OBC 2012)

- 2 PLY MOD. BIT ROOFING MEMBRANE (WRAP UP AND OVER PARAPET)
- 5/8" PLYWOOD ON TAPERED WOOD SLEEPERS, 2% SLOPE TO DRAIN/SCUPPER.
- ENGG. JOIST, SEE STRUCTURAL DWGS FOR REQUIREMENTS.
- R50min. ROXUL INSULATION WITHIN FRAMING CAVITY.
- 6mil. POLY VAPOUR BARRIER
- 3/8" HAT CHANNELS AT 16" O.C.
- 2 LAYERS 5/8" SHEETROCK FIRECODE CORE GYPSUM PANELS (EXTERIOR GRADE GWB OR DENS-GLASS GOLD SHEATHING AT EXTERIOR CONDITIONS), PANELS SCREW ATTACH, JOINTS STAGGER AND FINISH
- SEAL ALL GAPS AND PENETRATIONS W/ FIRE-RATED ACOUSTICAL SEALANTS, CONTINUOUS

COMMON COMPOSITION NOTES:

- PROVIDE COMPRESSIBLE FOAM GASKET BETWEEN METAL AND CONCRETE.
- SET BOTTOM TRACK IN DOUBLE CONTINUOUS BEAD OF SEALANT. SILL AND TOP PLATE IN CONTINUOUS SEALANT.
- PROVIDE FIRE-RATED ACOUSTICAL SEALANTS TO CLOSE PERIMETER (TOP, BOTTOM, VERTICAL INTERSECTS) JOINTS AND OPENINGS WHERE MECHANICAL, PLUMBING, ELECTRICAL OR OTHER DEVICES PENETRATE THROUGH SOUND RATED WALLS.
- PROVIDE GWB ON FINISHED SIDE ONLY AT CHASES/FURRED SITUATIONS.
- PROVIDE MOISTURE RESISTANT (MR) GWB AT ALL WET AREAS AND AREAS PRONE TO MOISTURE. PROVIDE 5/8" CEMENT BOARD IN WASHROOM AREAS, JANITOR'S CLOSET, WHERE TILE ARE TO BE APPLIED.
- PROVIDE PLYWOOD BACKING/WOOD BLOCKING WHERE REQUIRED.
- COORDINATE ALL WINDOW AND DOOR ROUGH OPENINGS WITH SCHEDULE AND MANUFACTURER INSTALLATION DETAILS AND RECOMMENDATIONS.

WALL COMPOSITION:

W1 TYPICAL NEW FOUNDATION WALL

- 2" RIDID INSULATION (CONTINUOUS BELOW GRADE)
- SELF-ADHERING WATERPROOFING MEMBRANE ON
- POURED CONCRETE

W2 TYPICAL EXTERIOR WALL (NON-COMBUSTIBLE CONSTRUCTION) - BASED ON ASSEMBLY (S10a) OF SB-3 (OBC 2012)

- 7/8" CORRUGATED METAL CLADDING
- 1/2" THICK METAL CLADDING + 2" "Z" GIRT
- AIR BARRIER.
- 2" ROXUL CAVITY ROCK OR APPROVED EQUIVALENT EXTERIOR INSULATION (CONTINUOUS)
- 1 LAYER 5/8" EXTERIOR GRADE TYPE "X" GYPSUM BOARD.
- 6" STEEL STUDS @ 16" O.C.
- 5.5" ROXUL AFB BATT INSULATION.
- VAPOUR BARRIER
- 1 LAYER 5/8" TYPE "X" GYPSUM BOARD

W3 TYPICAL EXTERIOR WALL (COMBUSTIBLE CONSTRUCTION) - BASED ON ASSEMBLY (EW1a) OF SB-3 (OBC 2012)

- 1/2" THICK METAL CLADDING + 2" "Z" GIRT OR 3 1/2" THICK STONE/BRICK VENEER (REFER TO ELEVATIONS FOR MATERIAL LOCATIONS)
- AIR BARRIER.
- 2" ROXUL CAVITY ROCK OR APPROVED EQUIVALENT EXTERIOR INSULATION (CONTINUOUS)
- 1/2" EXTERIOR GRADE PLYWOOD
- 6" STEEL STUDS @ 16" O.C.
- 5.5" ROXUL AFB BATT INSULATION.
- VAPOUR BARRIER
- 1 LAYER 5/8" TYPE "X" GYPSUM BOARD

PARTITION COMPOSITION:

W6 TYPICAL INTERIOR PARTITION

- 1/2" G.B. ON BOTH SIDES (1/2" CEMENT BRD WHERE TILES ARE TO BE APPLIED)
- 2" X 6" STEEL STUD @ 16" O.C.

W7 TYPICAL DEMISING WALL /CORRIDOR PARTITION CONSTRUCTION (F.R.R. : 1hr_per ULC Des W317)

- 1 LAYER 5/8" SHEETROCK FIRECODE CORE GYPSUM PANELS
- 2x6 STEEL STUDS @ 16" O.C. MAX.
- 4" THERMAFIBER SAFB, FULL WIDTH AND HEIGHT OF CAVITY
- 1 LAYER 5/8" QUIETROCK 525 PANELS
- SEAL ALL GAPS AND PENETRATIONS W/ FIRE-RATED ACOUSTICAL SEALANTS, CONTINUOUS, BOTH SIDES
- PRIME AND PAINT FINISH (CORRIDOR SIDE)

W8 TYPICAL INTERIOR LOAD BEARING CONCRETE WALL CONSTRUCTION (F.R.R. : 1hr) ELEVATOR SHAFT WALL ?

- 1 LAYER 5/8" GYPSUM BOARD (TYPE X)
- 8" POURED CONCRETE
- 1 LAYERS 5/8" GYPSUM BOARD (TYPE X)
- SEAL ALL GAPS AND PENETRATIONS W/ FIRE-RATED ACOUSTICAL SEALANTS, CONTINUOUS, BOTH SIDES
- PRIME AND PAINT FINISH (CORRIDOR SIDE)

FLOOR COMPOSITION:

F1 TYPICAL CONCRETE SLAB ON GRADE (F.R.R. : N/A)

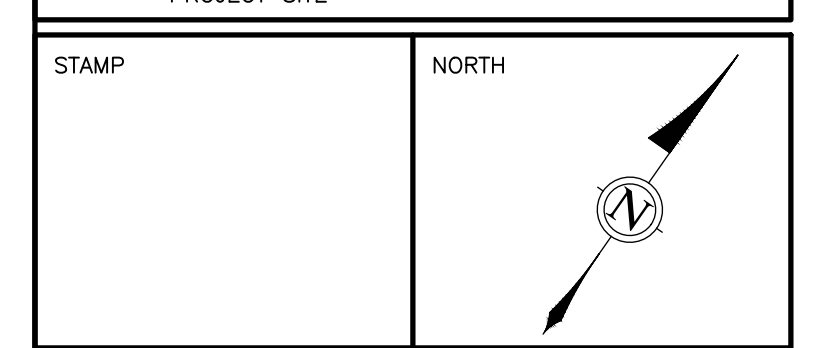
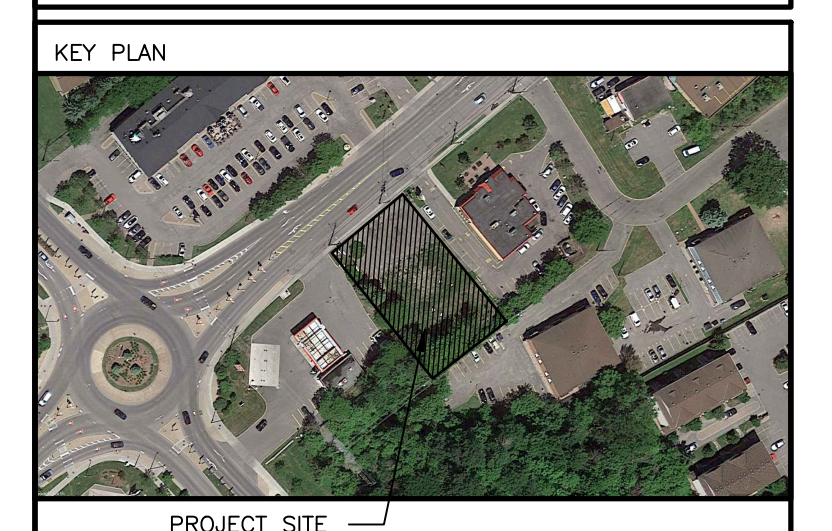
- FLOOR FINISH: PAINT AND SEAL. SEE ALSO FINISH SCHEDULE.
- 5" POURED CONCRETE FLOOR C/W STEEL MESH AND REINFORCING PER STRUCTURAL DWGS.
- VAPOUR BARRIER
- R15 RIGID INSULATION FIRST METER AT PERIMETER, R5 BALANCE.
- 2" SAND
- 4" GRAVEL
- COMPACTED FILL

F2 TYPICAL FLOOR CONSTRUCTION (SB-3 WOOD FLOOR JOISTS ASSEMBLY No F28g)

- 5/8" OSB SUB-FLOOR.
- WOOD FLOOR FRAMING, REFER TO STRUCTURAL DWGS FOR REQUIREMENTS.
- 8" ROXUL INSULATION IN FLOOR CAVITY.
- RESILIENT CHANNELS SPACED AT 16" O/C.
- 1/2" TYPE X GYPSUM BOARD.
- SEAL ALL GAPS AND PENETRATIONS W/ FIRE-RATED ACOUSTICAL SEALANTS, CONTINUOUS.

AT SOFFIT CONDITION.

- FILL FLOOR FRAMING CAVITY.
- 2" RIGID INSULATION BELOW FLOOR FRAMING.
- PREFINISHED METAL VENTED SOFFIT.



ALL CONTRACTORS TO VERIFY ALL DIMENSIONS ON SITE AND TO REPORT ALL ERRORS AND/OR OMISSIONS TO THE ARCHITECT.

ALL CONTRACTORS MUST COMPLY WITH ALL CODES AND BYLAWS AND OTHER AUTHORITIES HAVING JURISDICTION OVER THE WORK.

DO NOT SCALE DRAWINGS.

THIS DRAWING MAY NOT BE USED FOR CONSTRUCTION UNTIL SIGNED BY THE ARCHITECT. COPYRIGHT RESERVED.

14		
13		
12		
11		
10		
09		
08		
07		
06		
05		
04	ISSUED FOR CLIENT REVIEW	06/03/22
03	ISSUED FOR CLIENT REVIEW	06/03/21
02	ISSUED FOR CLIENT REVIEW	05/31/21
01	ISSUED FOR CLIENT REVIEW	04/26/21
NO.	REVISION	MM/DD/YY DATE

WOODMAN ARCHITECT & ASSOCIATES LTD.
 201-4 BEECHWOOD AVENUE, OTTAWA, ONTARIO, CANADA K1L8L9
 TEL: G13 228 9850. FAX G13 228 9848. mailbox@woodmanarchitect.com

CONSULTANTS:
 STRUCTURAL -
 MECHANICAL -
 ELECTRICAL -

PROJECT:
 1994 ST. JOSEPH,
 OTTAWA, ON

DRAWING:
 ROOF PLAN

DATE	04 JUNE, 2021	JOB NO.	1964
SCALE	AS SHOWN	DRAWING NO.	
DRAWN BY	A.S., S.B.		A-104
REVIEWED BY	R.J.W., R.W.		

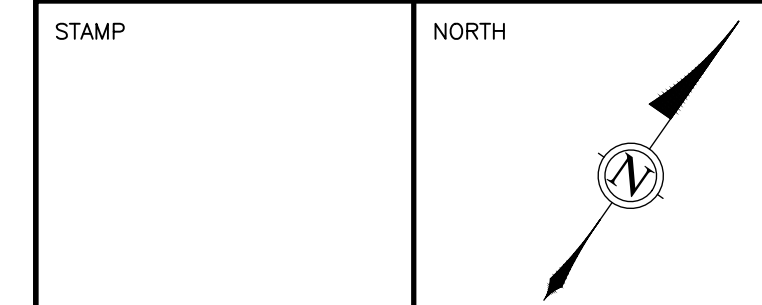
D07-12-21-0021

- 1 GEMFORT CEMENT PANELS, OR EQUIV., COLOUR "CAMBRIDGE WHITE"
- 2 GEMFORT CEMENT PANELS, OR EQUIV., ACZENT COLOUR "RESENT GREY"
- 3 PREFINISHED METAL SIDING EQUIV. TO IDEAL ROOFING 22 GAUGE CORRUGATED 1/8" C-360 COLOUR TO ARCHITECTS APPROVAL
- 4 CLEAR ANODIZED, THERMALLY BROKEN FRAMES, C/W CLEAR DOUBLE GLAZED HERMETICALLY SEALED LITES
- 5 PREFINISHED METAL FLASHING COLOUR TO ARCHITECTS APPROVAL

KEY PLAN



PROJECT SITE



ALL CONTRACTORS TO VERIFY ALL DIMENSIONS ON SITE AND TO REPORT ALL ERRORS AND/OR OMISSIONS TO THE ARCHITECT.

ALL CONTRACTORS MUST COMPLY WITH ALL CODES AND BYLAWS AND OTHER AUTHORITIES HAVING JURISDICTION OVER THE WORK.

DO NOT SCALE DRAWINGS.

THIS DRAWING MAY NOT BE USED FOR CONSTRUCTION UNTIL SIGNED BY THE ARCHITECT. COPYRIGHT RESERVED.

14		
13		
12		
11		
10		
09		
08		
07		
06		
05		
04		
03		
02	GRADES REVISED	05/20/24
01	ISSUED FOR CLIENT REVIEW	04/23/21
NO.	REVISION	MM/DD/YY DATE



201-4 BEECHWOOD AVENUE, OTTAWA, ONTARIO, CANADA K1L8P9
TEL: 613 228 9850, FAX 613 228 9848, mailbot@woodmanarchitect.com

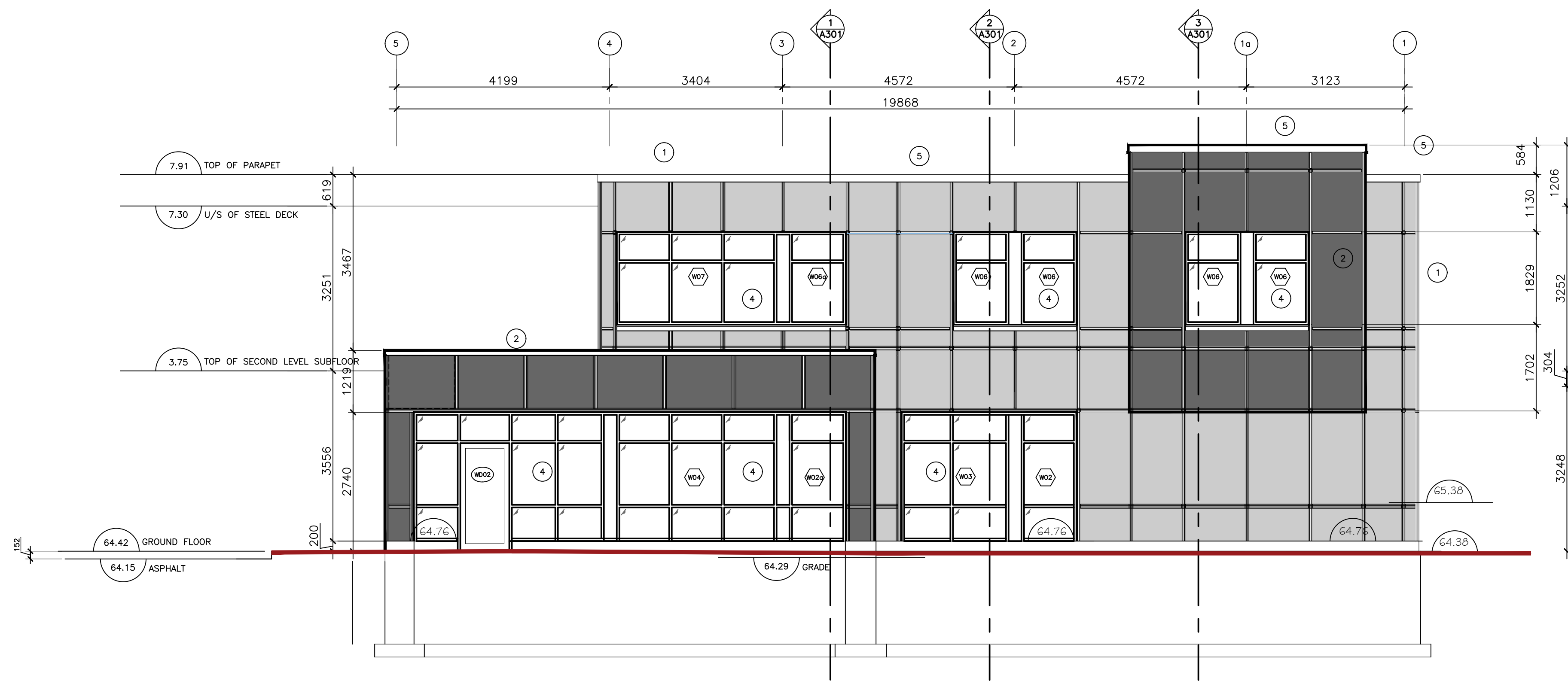
CONSULTANTS:
STRUCTURAL -
MECHANICAL -
ELECTRICAL -

PROJECT:
**1994 ST. JOSEPH,
OTTAWA, ON**

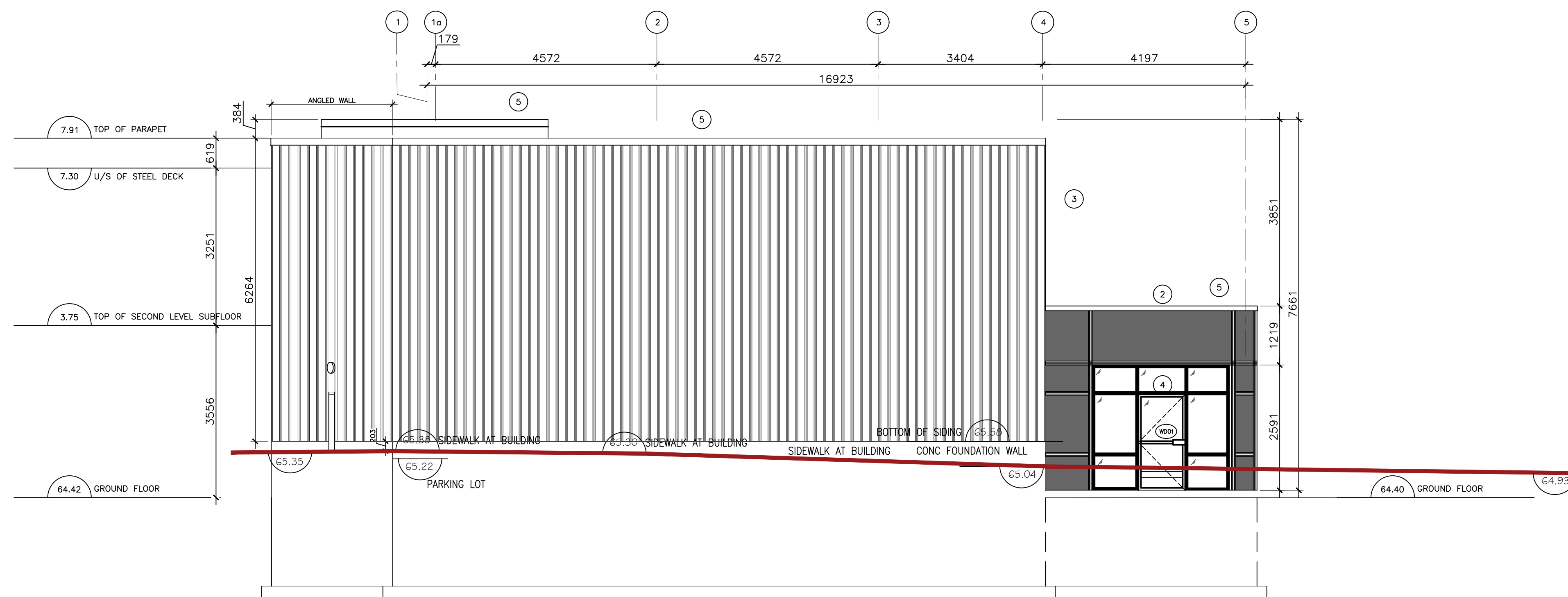
DRAWING:
**NORTH & SOUTH
ELEVATION**

DATE	20 APRIL, 2020	JOB NO.	1964
SCALE	AS SHOWN	DRAWING NO.	
DRAWN BY	A.S., S.B.		
REVIEWED BY	R.J.W., R.W.		

D07-12-21-0021

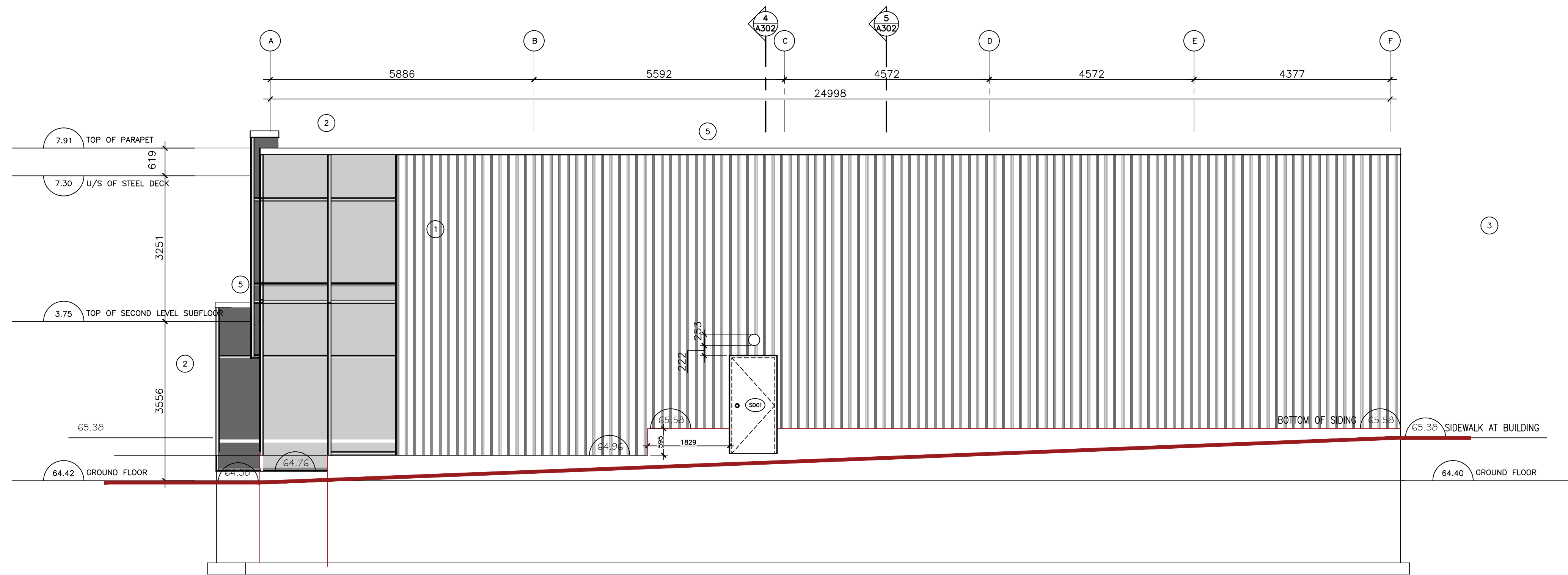


1 NORTH ELEVATION
3/16"=1'-0"

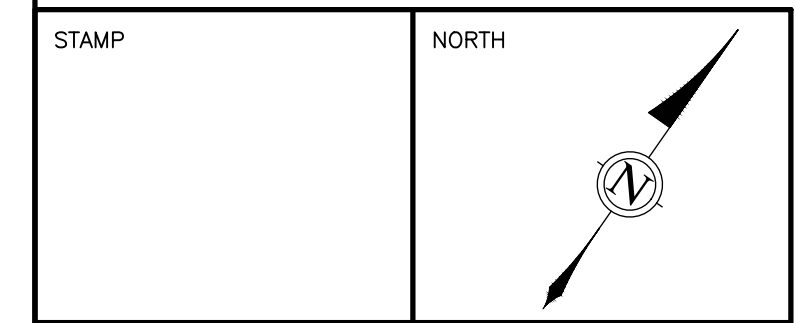
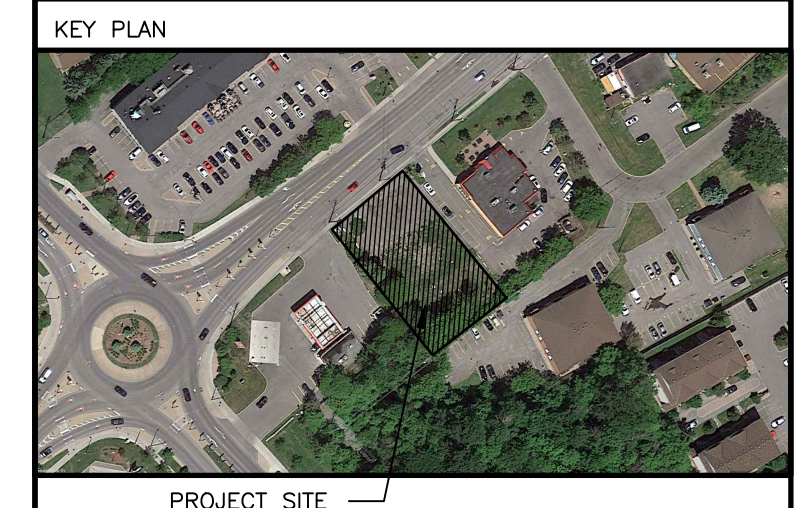


2 SOUTH ELEVATION
3/16"=1'-0"

2024-06-18P:\1964 - 1994 St Joseph (Pickard)\4. Arch Working Drawings\CAD\Floor Plans updated 2024-06-05.dwg



- 1 CEMENT CEMENT PANELS, OR EQUIV., COLOUR "CAMBRIDGE WHITE"
- 2 CEMENT CEMENT PANELS, OR EQUIV., COLOUR "TELETYPE GREY"
- 3 PREFINISHED METAL SIDING EQUIV TO IDEAL ROOFING 22 GAUGE CORRUGATED 1/8" C-360 COLOUR TO ARCHITECTS APPROVAL
- 4 CLEAR ANODIZED, THERMALLY BROKEN FRAMES, C/W CLEAR DOUBLE GLAZED HERMETICALLY SEALED LITES COLOUR TO ARCHITECTS APPROVAL
- 5 PREFINISHED METAL FLASHING COLOUR TO ARCHITECTS APPROVAL



ALL CONTRACTORS TO VERIFY ALL DIMENSIONS ON SITE AND TO REPORT ALL ERRORS AND/OR OMISSIONS TO THE ARCHITECT.

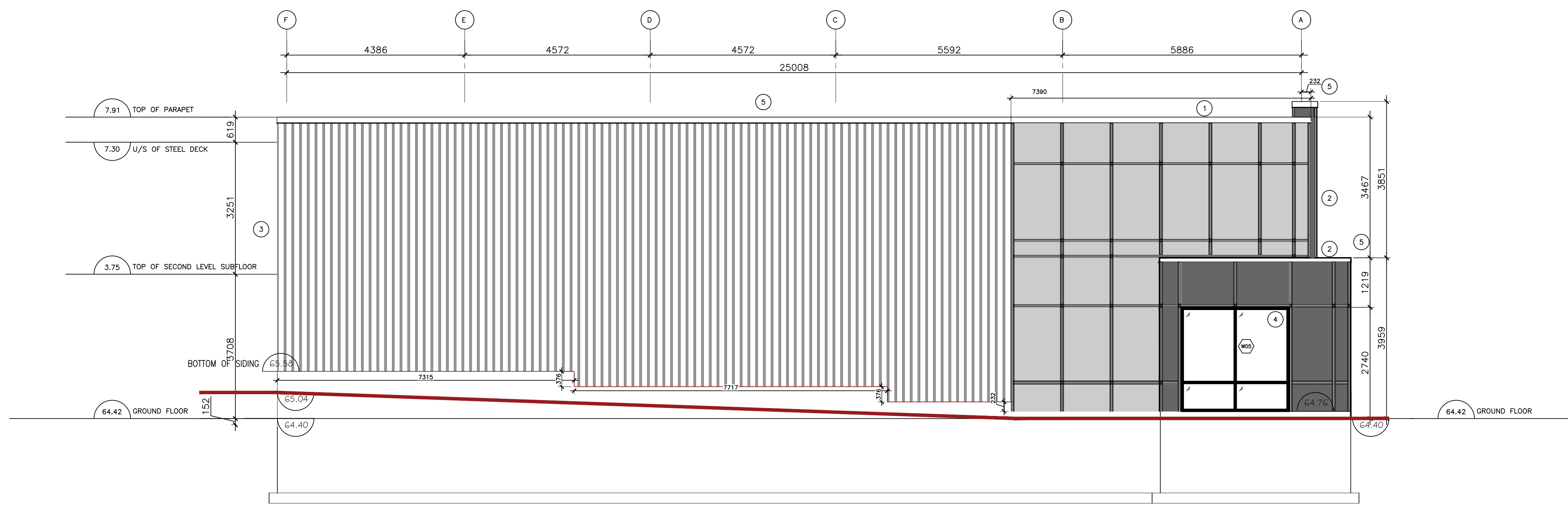
ALL CONTRACTORS MUST COMPLY WITH ALL CODES AND BYLAWS AND OTHER AUTHORITIES HAVING JURISDICTION OVER THE WORK.

DO NOT SCALE DRAWINGS.

THIS DRAWING MAY NOT BE USED FOR CONSTRUCTION UNTIL SIGNED BY THE ARCHITECT.

COPYRIGHT RESERVED.

1 WEST ELEVATION
3/16"=1'-0"



2 EAST ELEVATION
3/16"=1'-0"

14		
13		
12		
11		
10		
09		
08		
07		
06		
05		
04		
03		
02	GRADES REVISED	05/20/24
01	ISSUED FOR CLIENT REVIEW	04/23/21
NO.	REVISION	MM/DD/YY DATE

WOODMAN ARCHITECT
ASSOCIATES LTD.

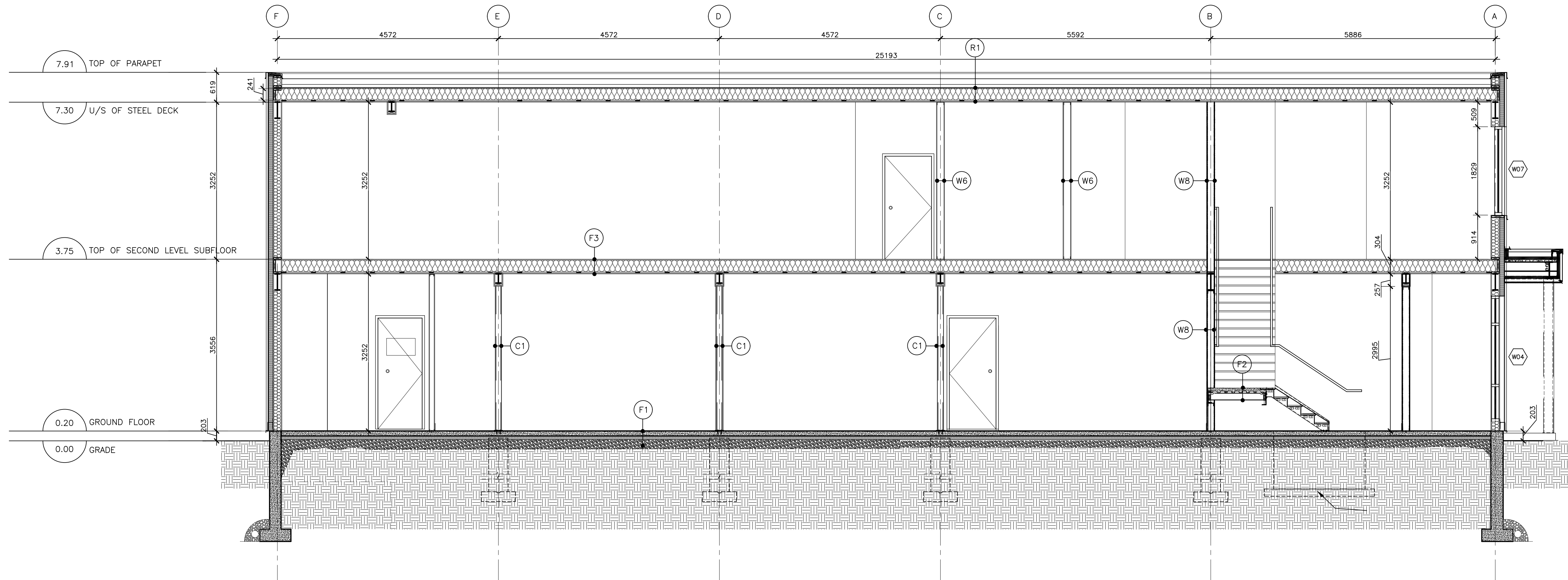
201-4 BEECHWOOD AVENUE, OTTAWA, ONTARIO, CANADA K1L8L9
TEL: 613 228 9850, FAX 613 228 9848, mailbox@woodmanarchitect.com

CONSULTANTS:
STRUCTURAL -
MECHANICAL -
ELECTRICAL -

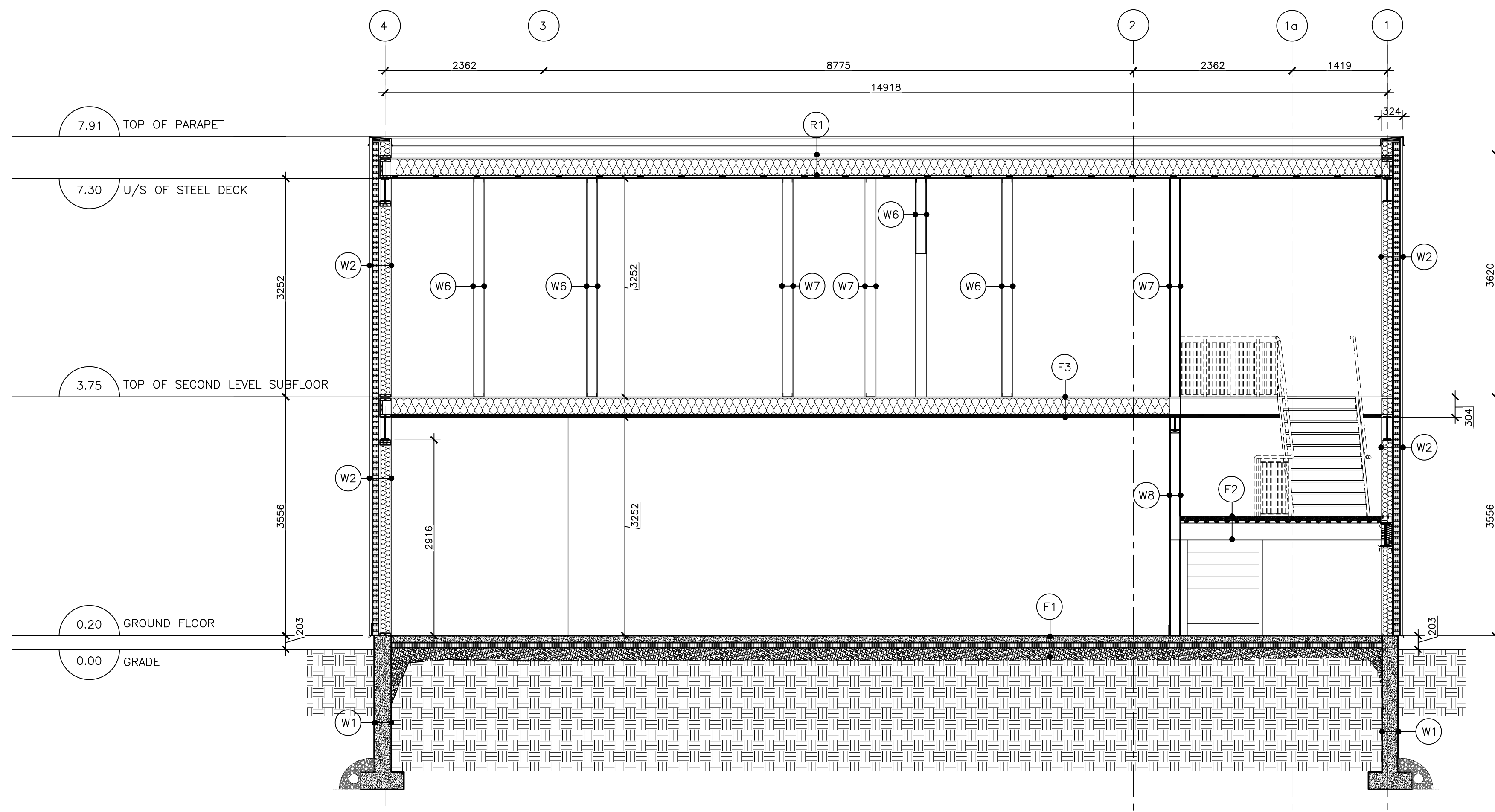
PROJECT:
**1994 ST. JOSEPH,
OTTAWA, ON**

DRAWING:
WEST & EAST ELEVATION

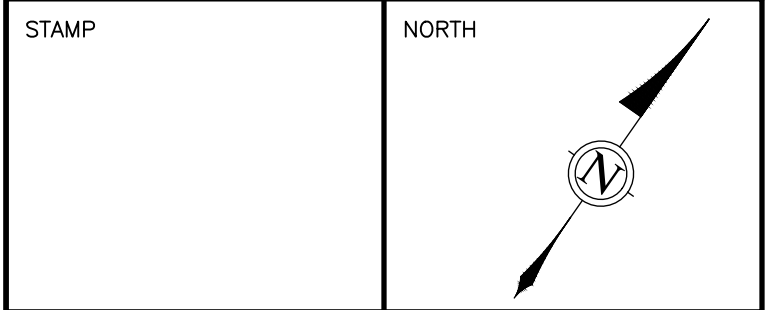
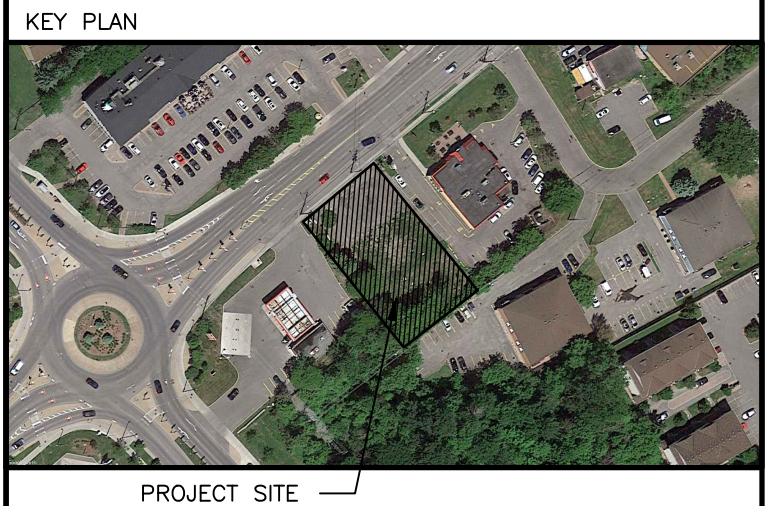
DATE	20 APRIL, 2020	JOB NO.	1964
SCALE	AS SHOWN	DRAWING NO.	
DRAWN BY	A.S., S.B.		
REVIEWED BY	R.J.W., R.W.		



1 BUILDING SECTION 1
A300 1/4"=1'-0"



2 BUILDING SECTION 2
A300 1/4"=1'-0"



ALL CONTRACTORS TO VERIFY ALL DIMENSIONS ON SITE AND TO REPORT ALL ERRORS AND/OR OMISSIONS TO THE ARCHITECT.

ALL CONTRACTORS MUST COMPLY WITH ALL CODES AND BYLAWS AND OTHER AUTHORITIES HAVING JURISDICTION OVER THE WORK.

DO NOT SCALE DRAWINGS.

THIS DRAWING MAY NOT BE USED FOR CONSTRUCTION UNTIL SIGNED BY THE ARCHITECT. COPYRIGHT RESERVED.

14	
13	
12	
11	
10	
09	
08	
07	
06	
05	
04	
03	
02	

01	ISSUED FOR CLIENT REVIEW	04/23/21
NO.	REVISION	MM/DD/YY DATE



201-4 BEECHWOOD AVENUE, OTTAWA, ONTARIO, CANADA K1L 6A9
TEL: 613 226 9550, FAX 613 226 9546, mail@woodmanarchitect.com

CONSULTANTS:
STRUCTURAL -
MECHANICAL -
ELECTRICAL -

PROJECT:
**1994 ST. JOSEPH,
OTTAWA, ON**

DRAWING:
BUILDING SECTION

DATE	20 APRIL, 2020	JOB NO.	1964
SCALE	AS SHOWN	DRAWING NO.	
DRAWN BY	A.S., S.B.		
REVIEWED BY	R.J.W., R.W.		