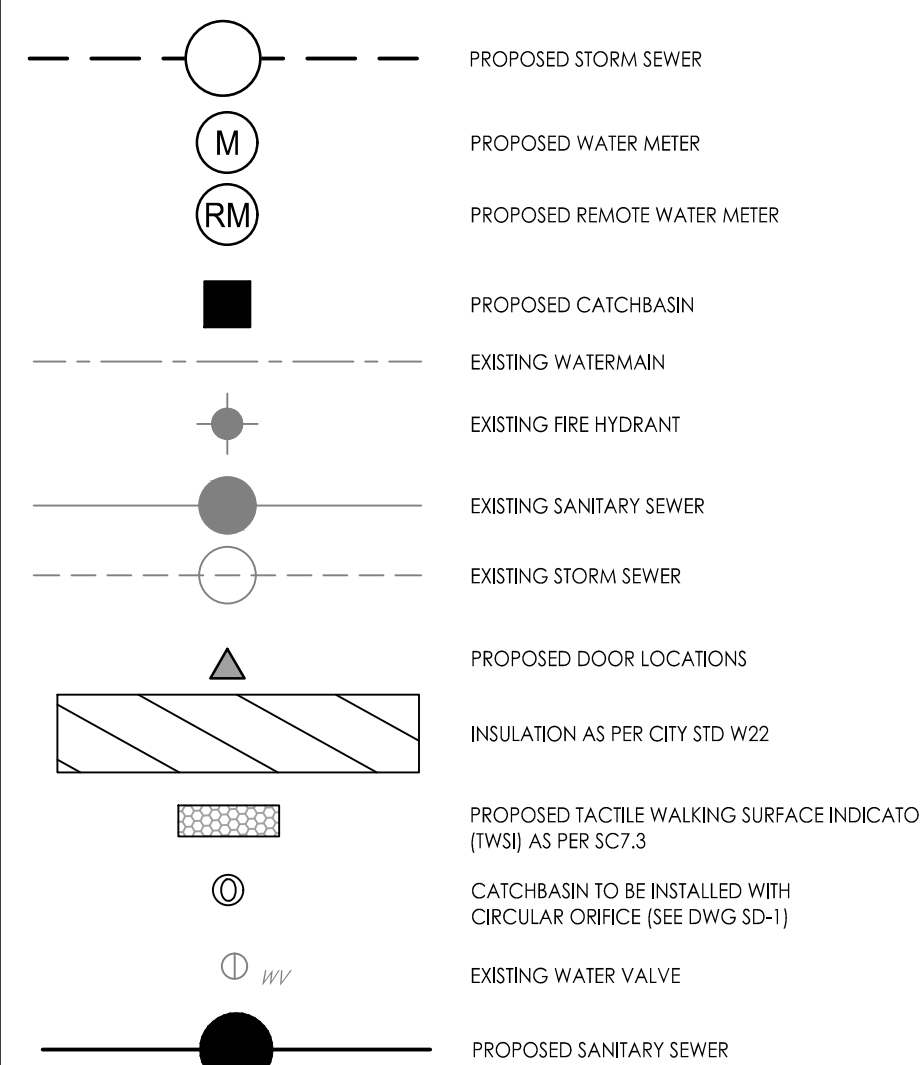


Copyright Reserved

The Contractor shall verify and be responsible for all dimensions. DO NOT scale the drawing - any errors or omissions shall be reported to Stantec without delay.
The Copyrights to all designs and drawings are the property of Stantec. Reproduction or use for any purpose other than that authorized by Stantec is forbidden.

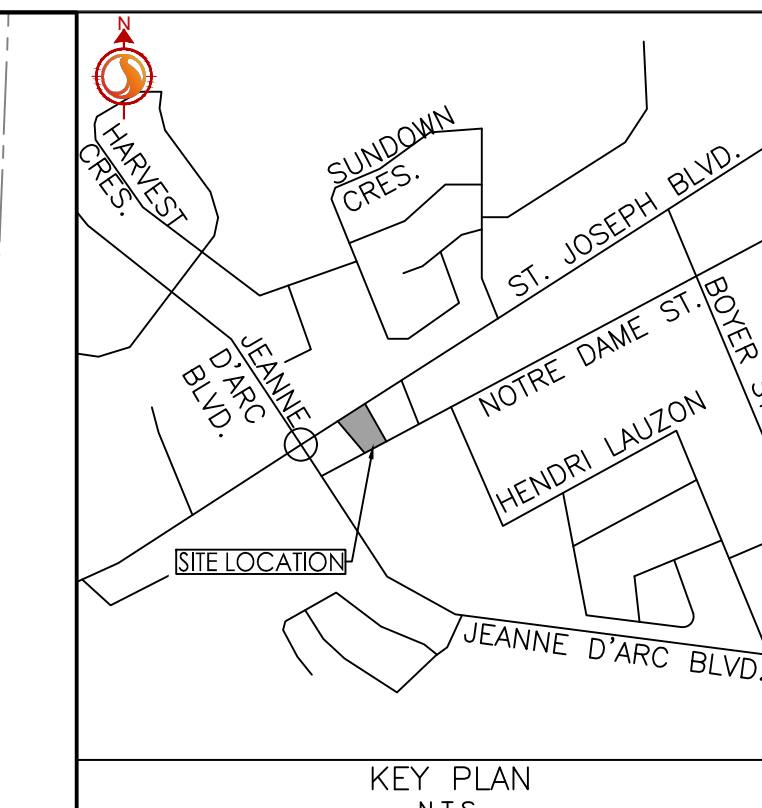
Legend



Notes

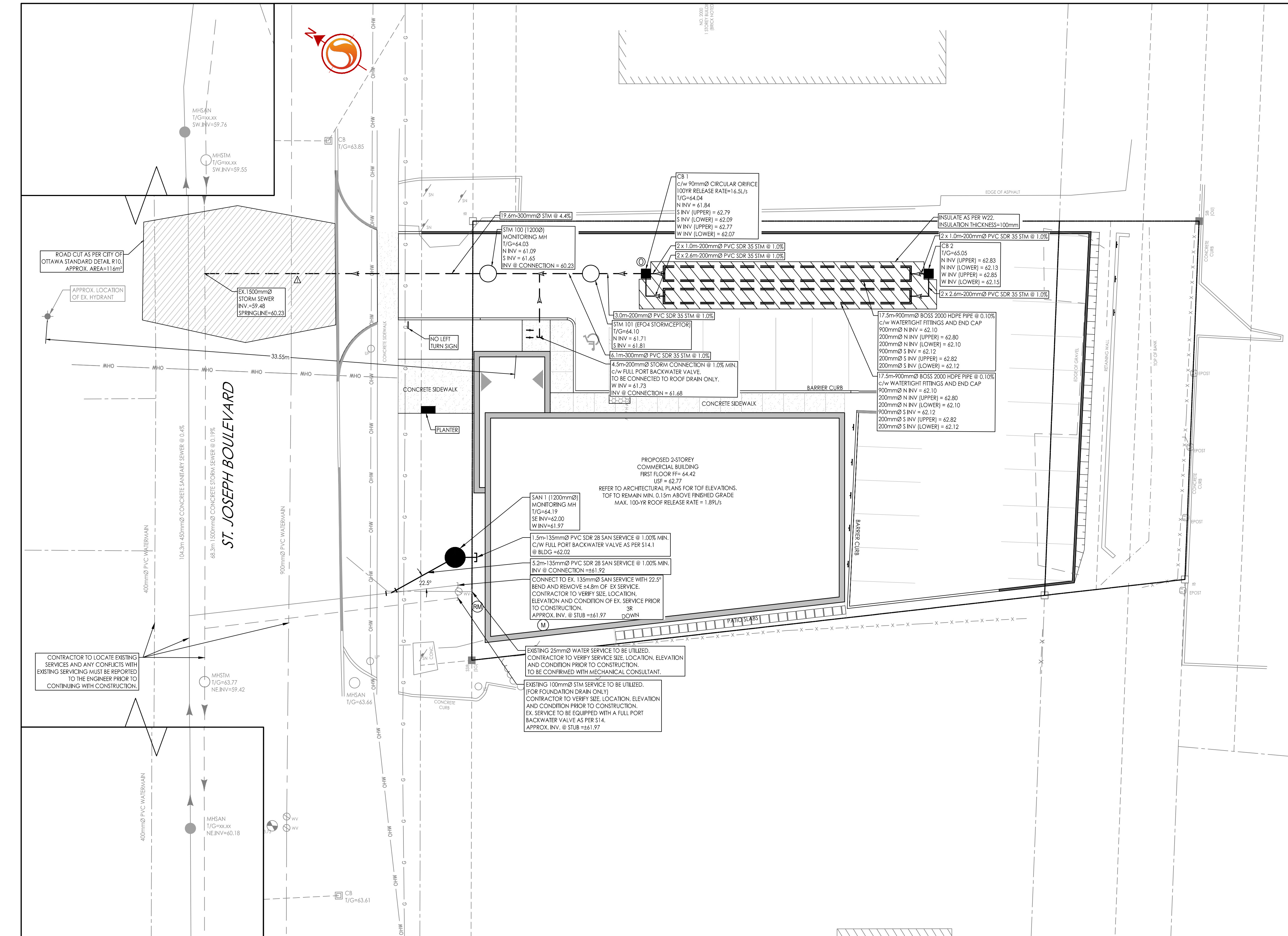
- FINAL SERVICE LATERAL SIZES TO BE CONFIRMED BY MECHANICAL CONSULTANT
- THE LOCATION OF UTILITIES IS APPROXIMATE ONLY AND THE EXACT LOCATION SHOULD BE DETERMINED BY CONSULTING THE MUNICIPAL AUTHORITIES AND UTILITY COMPANIES CONCERNED. THE CONTRACTOR SHALL PROVE THE LOCATION OF UTILITIES AND SHALL BE RESPONSIBLE FOR THEIR PROTECTION AND THE IMPLEMENTATION OF ANY NECESSARY PROCEDURES CALLED FOR IN THE APPROPRIATE STANDARD AND REGULATIONS
- TOPOGRAPHIC SURVEY COMPLETED BY STANTEC GEOMATICS LTD. DATED JULY 20, 2023. ELEVATIONS SHOWN HEREON ARE GEODETIC (CGVD-1928-1978) AND ARE DERIVED FROM THE CAN-NET VRS NETWORK MONUMENT: OTTAWA ELEVATION=95.230.
- SITE PLAN PREPARED BY WOODMAN ARCHITECT AND ASSOCIATES LTD., PROVIDED MAY 2024.
- GEOTECHNICAL REPORT PREPARED BY KOLLARD ASSOCIATES DATED JUNE 21, 2019 PROJECT # 190361.

6	REVISED SITE PLAN	WAJ	KJK	24.05.15
5	REVISED SITE PLAN	WAJ	KJK	23.01.16
4	REVISED SITE PLAN	WAJ	KJK	22.08.24
3	REVISED AS PER CITY COMMENTS	WAJ	KJK	22.04.22
2	REVISED AS PER CITY COMMENTS	WAJ	AMP	22.02.17
1	ISSUED FOR REVIEW	WAJ	AMP	20.07.17
Revision		By	Appd.	YY.MM.DD
File Name:	160401518-DB	AJ	KJK	WAJ
		Dwn.	Chkd.	Dsgn.
Permit-Seal				



John Seigny
JOHN SEIGNY C.E.T.
MANAGER (A), DEVELOPMENT REVIEW EAST
PLANNING, DEVELOPMENT & BUILDING SERVICES
DEPARTMENT, CITY OF OTTAWA

APPROVED
By sevignyjo at 11:53 am, Oct 23, 2024



CROSSING	STM INV	STM OBV	SAN INV	SAN OBV	WTR TOP	WTR BTM	NOTES
1	60.50	60.80			±62.20	±61.30	

*BRACKETS DENOTE ADJUSTED VALUE WITH CONCRETE PIPE THICKNESS

DRAINAGE AREA ID	DRAIN TYPE	# DRAINS	100 YEAR HEAD (m)	100 YEAR RELEASE RATE (L/S)
BLDG	WATS ACCUFLOW (2% OPEN)	2	0.15	1.89

CATCHBASIN ID	AREA ID	TYPE	100YR HEAD (m)	100YR RELEASE RATE (L/S)
CB 1	CB-1	90mmØ CIRCULAR ORIFICE	0.86	16.5

- GENERAL NOTES**
- ALL WORK SHALL BE CARRIED OUT IN COMPLIANCE WITH THE ONTARIO OCCUPATIONAL HEALTH AND SAFETY ACT AND REGULATIONS FOR CONSTRUCTION PROJECTS.
 - ALL WORK AND MATERIALS TO CONFORM WITH CURRENT MINISTRY OF THE ENVIRONMENT & ENERGY OF ONTARIO, CITY OF OTTAWA AND ONTARIO PROVINCIAL STANDARDS AND SPECIFICATIONS. LOCAL UTILITY STANDARDS AND MINISTRY OF TRANSPORTATION STANDARDS WILL APPLY WHERE REQUIRED.
 - THE CONTRACTOR IS ADVISED THAT WORKS BY OTHERS MAY BE ONGOING DURING THE PERIOD OF THIS CONTRACT. THE CONTRACTOR SHALL COORDINATE CONSTRUCTION ACTIVITIES AND COORDINATION WITH ALL OTHER CONTRACTORS AND PREVENT CONSTRUCTION CONFLICTS.
 - THE INFORMATION SHOWN FOR EXISTING UTILITIES WAS PROVIDED BY OTHERS. THE CONTRACTOR IS RESPONSIBLE FOR LOCATING AND PROTECTING ALL UTILITIES DURING CONSTRUCTION. ALL EXISTING UTILITIES MUST BE LOCATED AND VERIFIED BY SA CH UTILITY PRIOR TO COMMENCEMENT OF WORK. ANY VARIANCE IS TO BE IMMEDIATELY REPORTED TO THE ENGINEER. LOSS TIME DUE TO FAILURE OF THE CONTRACTOR TO CONFIRM UTILITY LOCATIONS AND NOTIFY THE ENGINEER OF POSSIBLE CONFLICTS PRIOR TO CONSTRUCTION WILL BE AT THE CONTRACTORS EXPENSE.
 - ALL CONSTRUCTION SHALL BE CARRIED OUT IN ACCORDANCE WITH THE RECOMMENDATIONS MADE IN THE GEOTECHNICAL REPORT.
 - THE CONTRACTOR IS RESPONSIBLE FOR OBTAINING ALL PERMITS REQUIRED AND TO BEAR THE COST OF SAME INCLUDING WATER PERMIT AND ASSOCIATED COSTS.
 - ALL DISTURBED AREAS SHALL BE RESTORED TO EQUAL OR BETTER CONDITION TO THE SATISFACTION OF THE ENGINEER AND THE CITY. PAVEMENT RESTORATION FOR SERVICE AND UTILITY CUTS SHALL BE IN ACCORDANCE WITH OPS 509.010 AND OPS 310.
 - BENCHMARKS: IT IS THE RESPONSIBILITY OF THE CONTRACTOR TO VERIFY THAT THE SITE BENCHMARK(S) HAS NOT BEEN ALTERED OR DISTURBED AND THAT ITS RELATIVE ELEVATION AND DESCRIPTION AGREES WITH THE INFORMATION SHOWN ON DRAWING GRP-1.
 - THE CONTRACTOR SHALL PROVIDE TO THE ENGINEER 1 (ONE) SET OF AS CONSTRUCTED SITE SERVICING, GRADING, AND SITE ELECTRICAL DWGS.
 - CONTRACTOR TO LOCATE EXISTING SERVICE LATERALS PRIOR TO CONSTRUCTION AND VERIFY SERVICE SIZE, LOCATION, ELEVATION AND CONDITION.

- WATERMANS**
- ALL WATERMANS, WATER SERVICES, CONNECTIONS AND APPURTENANCES AS PER CITY OF OTTAWA STANDARDS. THE CONTRACTOR SHALL CO-ORDINATE AND PAY ALL RELATED COSTS INCLUDING THE COST OF CONNECTION, INSPECTION AND DISINFECTION BY CITY OF OTTAWA PERSONNEL. WATERMAIN TRENCH TO BE IN ACCORDANCE WITH CITY OF OTTAWA W17.
 - ALL WATERMANS SHALL HAVE MIN. COVER OF 2.4m. WATERMANS ARE TO BE INSTALLED TO THE ELEVATIONS SHOWN ON THE APPROVED SITE SERVICING DRAWING. WHERE SPECIFIC WATERMAIN ELEVATIONS ARE NOT SHOWN ON SERVICING DRAWING, A MINIMUM COVER OF 2.4m FROM PROPOSED GRADES. AS SHOWN ON THE GRADING PLAN, MUST BE MAINTAINED AT ALL TIMES. PREGRADE AREAS COVER TO BE FROM PREGRADE ELEVATIONS.
 - ALL WATERMAIN BENDS, JOINTS, TEES AND PLUGS SHALL BE MECHANICALLY RESTRAINED IN ACCORDANCE WITH CITY OF OTTAWA STANDARDS.
 - ALL WATERMANS MUST COMPLY WITH MINIMUM HORIZONTAL AND VERTICAL CLEARANCES IN ACCORDANCE WITH LOCAL PROVINCIAL GUIDELINES AND THE APPLICABLE BUILDING AND PLUMBING CODE. WHERE HORIZONTAL SEPARATIONS CANNOT BE ACHIEVED, APPROVAL FROM THE ENGINEER MUST BE OBTAINED AND A MINIMUM 500mm VERTICAL SEPARATION MUST BE MAINTAINED.
 - ALL WATERMANS SHALL BE HYDROSTATICALLY TESTED IN ACCORDANCE WITH THE CITY OF OTTAWA AND ONTARIO GUIDELINES UNLESS OTHERWISE DIRECTED. PROVISIONS FOR FLUSHING WATER LINE PRIOR TO TESTING, ETC. MUST BE PROVIDED.
 - ALL WATERMANS SHALL BE BACTERIOLOGICALLY TESTED IN ACCORDANCE WITH THE CITY OF OTTAWA AND ONTARIO GUIDELINES. ALL CHLORINATED WATER TO BE DISCHARGED AND PRETREATED TO ACCEPTABLE LEVELS PRIOR TO DISCHARGE. ALL DISCHARGED WATER MUST BE CONTROLLED AND TREATED SO AS NOT TO ADVERSELY AFFECT THE ENVIRONMENT. IT IS THE RESPONSIBILITY OF THE CONTRACTOR TO ENSURE THAT ALL MUNICIPAL AND/OR PROVINCIAL REQUIREMENTS ARE FOLLOWED.
 - CATHODIC PROTECTION PER CITY OF OTTAWA W40 AND W42.

- STORM AND SANITARY SEWERS**
- SEWER TRENCH SHALL CONSIST OF CLASS 'B' BEDDING PER CITY OF OTTAWA STANDARDS S6 AND S7. COMPACTION SHALL BE A MINIMUM OF 95% STANDARD PROCTOR DENSITY (REFER TO GEOTECHNICAL REPORT PREPARED BY KOLLARD ASSOCIATES DATED JUNE 21, 2019 PROJECT # 190361).
 - FOR CONSTRUCTION DETAILS NOT SHOWN ON PLANS, REFERENCE SHALL BE MADE TO THE ONTARIO PROVINCIAL STANDARDS DRAWINGS AND CITY OF OTTAWA STANDARDS.
 - SERVICES TO BUILDINGS TO BE TERMINATED 1.0m FROM THE FACE OF BUILDING UNLESS OTHERWISE NOTED.
 - LASER ALIGNMENT CONTROL TO BE UTILIZED ON ALL SEWER INSTALLATIONS.
 - FROST PROTECTION PER CITY OF OTTAWA STANDARD DRAWING S35 WHERE THERE IS LESS THAN 2.0m OF COVER ABOVE THE SEWER SERVICES.
 - CONTRACTOR SHALL PERFORM LEAKAGE TESTING, IN THE PRESENCE OF THE CONSULTANT, FOR SANITARY SEWERS IN ACCORDANCE WITH OPS 410 AND OPS 407. A COPY OF THE INSPECTION REPORT SHALL BE SUBMITTED TO THE CONSULTANT FOR REVIEW.
 - CONTRACTOR TO VERIFY EXISTING SEWERS AND INVERTS, AND REPORT ANY DISCREPANCIES TO SITE ENGINEER BEFORE PROCEEDING WITH CONSTRUCTION.

C:\Users\jseigny\OneDrive\Documents\160401518\design\working\160401518-DB.dwg 24/10/24 15:26:44 AM By: J. Seigny, Warren