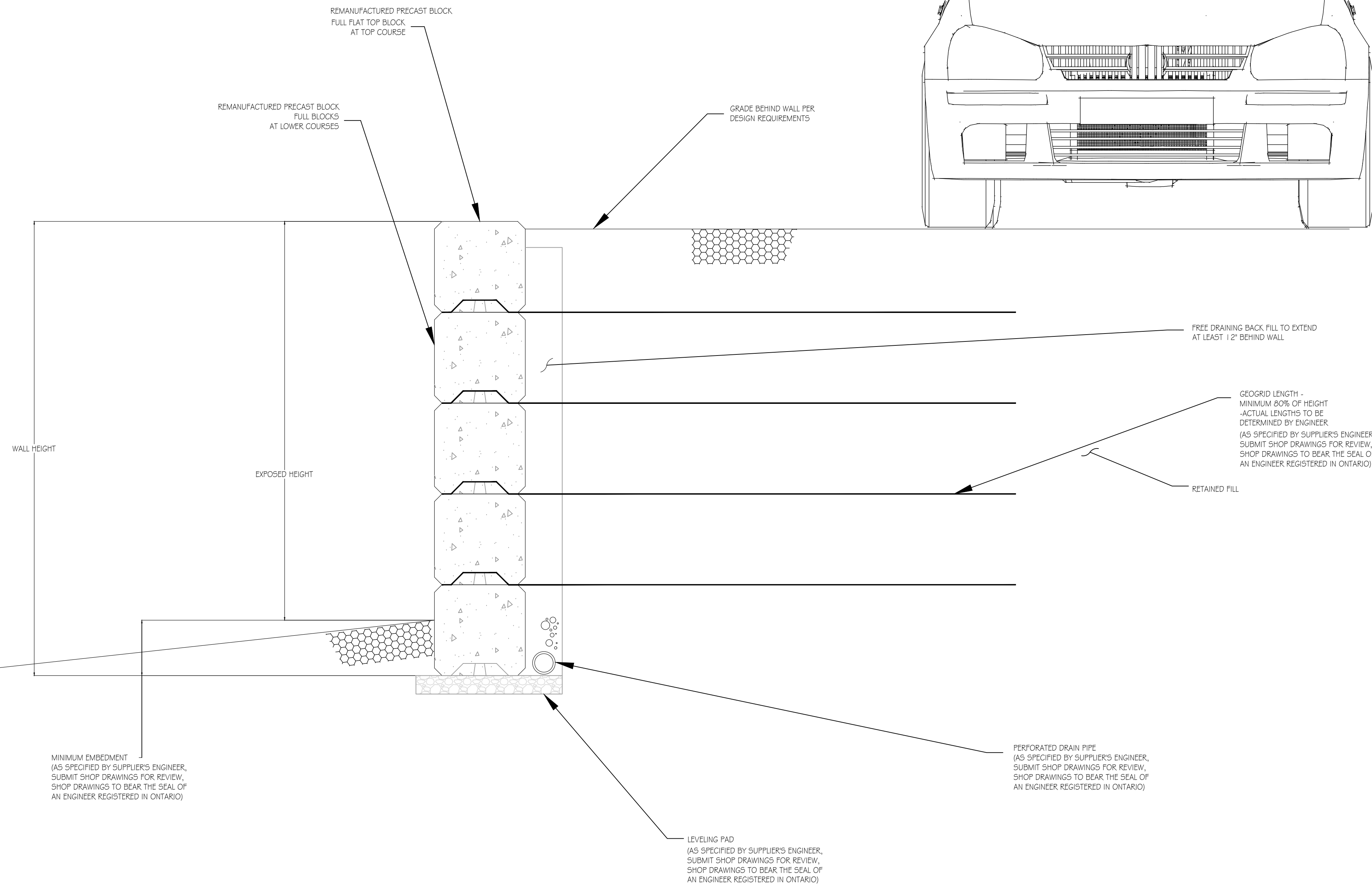
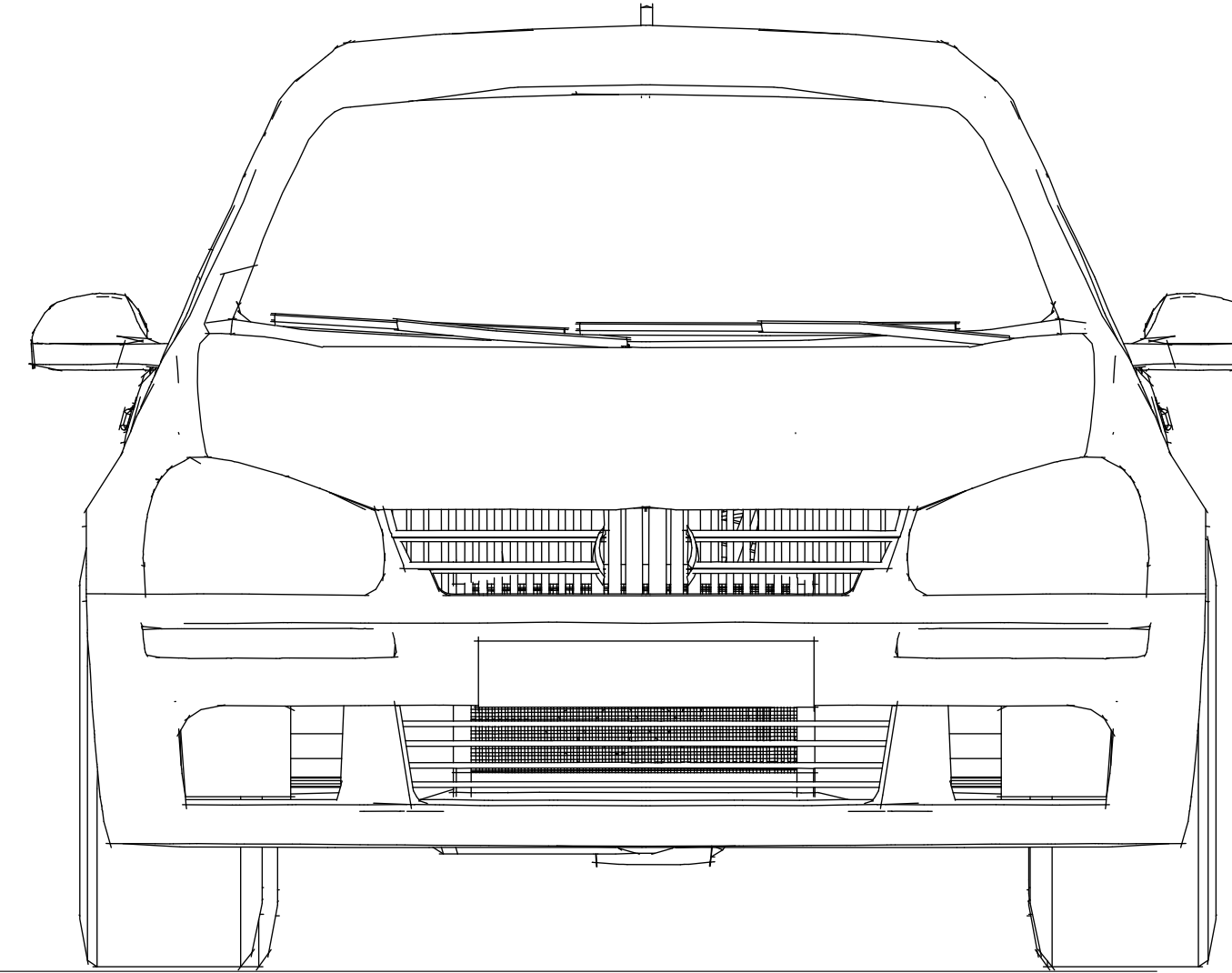
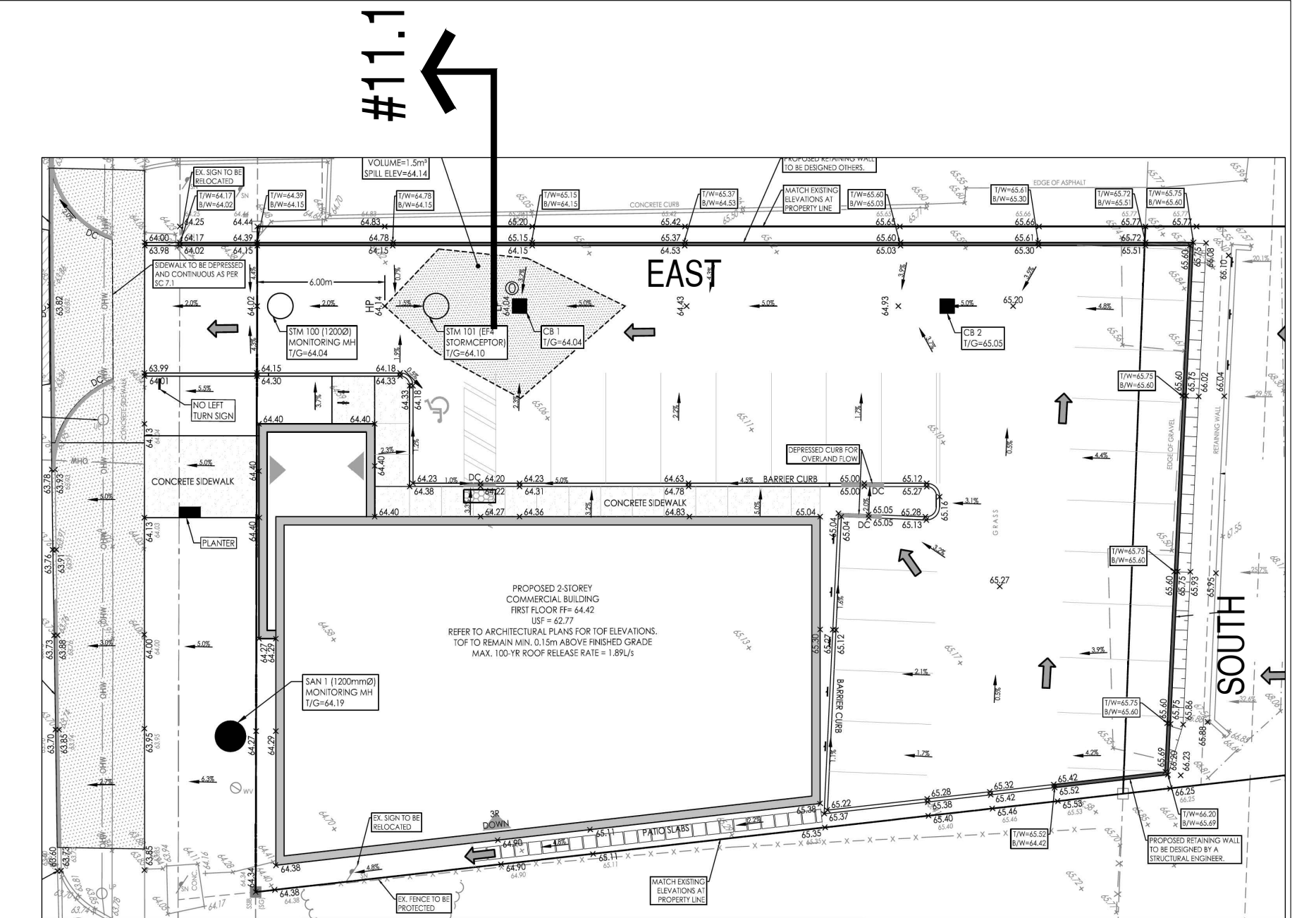


- Notes:
- Contractor to submit shop drawings with Engineering stamp to certify the design.
 - Loading should include the vehicle surcharge at the higher elevation.
 - Railing (not shown for clarity) to be designed by steel fabricator, with Engineering stamp to certify the design. Railing post to be on sono tube, also part of the railing design.

DESIGN MUST INCLUDE VEHICLE SURCHARGE NEIGHBOR'S SIDE



#11.1 ~ Side wall details



RETAINING WALL KEY PLAN



Reference picture (similar construction for the side walls)

13		
12		
11		
10		
9		
8		
7		
6		
6		
5		
4		
3	insulation details updated as per Kollaard Associates Engineers' drawing	August 28, 2024
2	addition to existing retaining wall (grade is proposed to be lowered)	May 6, 2024
1	preliminary	January 2021

DAIDO GROUP INC.
STRUCTURAL ENGINEERS
11-300 Earl Grey Drive, Suite 213,
Ottawa, Ontario K2T 1C1
TEL: (613) 302-8972
E.MAIL: daidogroup@gmail.com
Web Site: https://daidogroup.wixsite.com/daido



[Signature]
JOHN SEVIGNY C.E.T.
MANAGER (A), DEVELOPMENT REVIEW EAST
PLANNING, DEVELOPMENT & BUILDING SERVICES
DEPARTMENT, CITY OF OTTAWA

APPROVED
By sevignyjo at 11:56 am, Oct 23, 2024

PROJECT
Orleans Physio
1994 St. Joseph Blvd.,
Ottawa, Ontario

TITLE
SIDE WALL DETAILS
(East Wall)

DRAWN
TRENCH TAI

OUR REF. DRAWINGS
loc:\d\1994StJoseph\tbl\loc5ect.dwg
loc:\d\1\4top\pang\1\6.dwg
loc:\d\loc5.dwg
loc:\d\tbl.dwg

DRAWING NO.
S11
(of 11)

SCALE: N.T.S.
(Arch D SIZE)