



Copyright Reserved
The Contractor shall verify and be responsible for all dimensions. DO NOT scale the drawing - any errors or omissions shall be reported to Stantec without delay.
The Copyrights to all designs and drawings are the property of Stantec. Reproduction or use for any purpose other than that authorized by Stantec is forbidden.

Legend

- AREA ID
- RUNOFF COEFFICIENT
- STORM DRAINAGE AREA hatched
- STORM DRAINAGE BOUNDARY
- PROPOSED STORM SEWER
- PROPOSED CATCHBASIN
- EXISTING STORM SEWER
- PROPOSED DOOR LOCATIONS
- INSULATION AS PER CITY STD W22
- DIRECTION OF OVERLAND FLOW
- MAXIMUM STATIC PONDING LIMITS
- CATCHBASIN TO BE INSTALLED WITH CIRCULAR ORIFICE (SEE DWG SD-1)

Notes

Revision	By	Appd.	YY.MM.DD
6	WAJ	KJK	24.05.15
5	WAJ	KJK	23.01.16
4	WAJ	KJK	22.08.24
3	WAJ	KJK	22.04.22
2	WAJ	AMP	22.02.17
1	WAJ	AMP	20.07.17

File Name: 160401518-DB
Dwn. Chkd. Dgn. YY.MM.DD

Permit-Seal

Client/Project
PULICKAL HOLDINGS INC.

TWO STOREY COMMERCIAL BUILDING
1994 ST-JOSEPH BLVD.
OTTAWA, ON

Title
STORM DRAINAGE PLAN

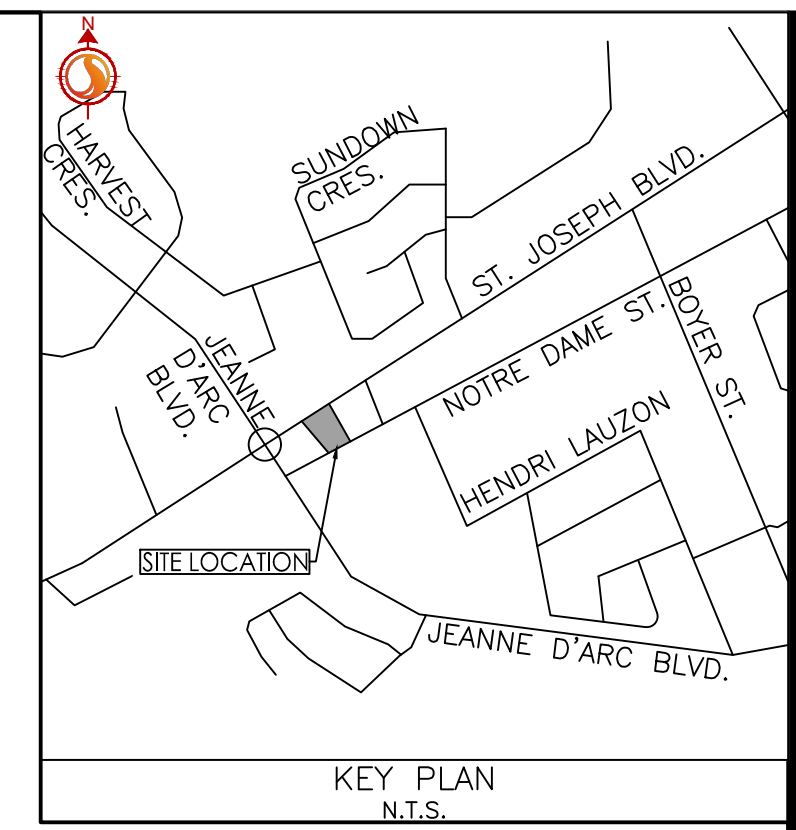
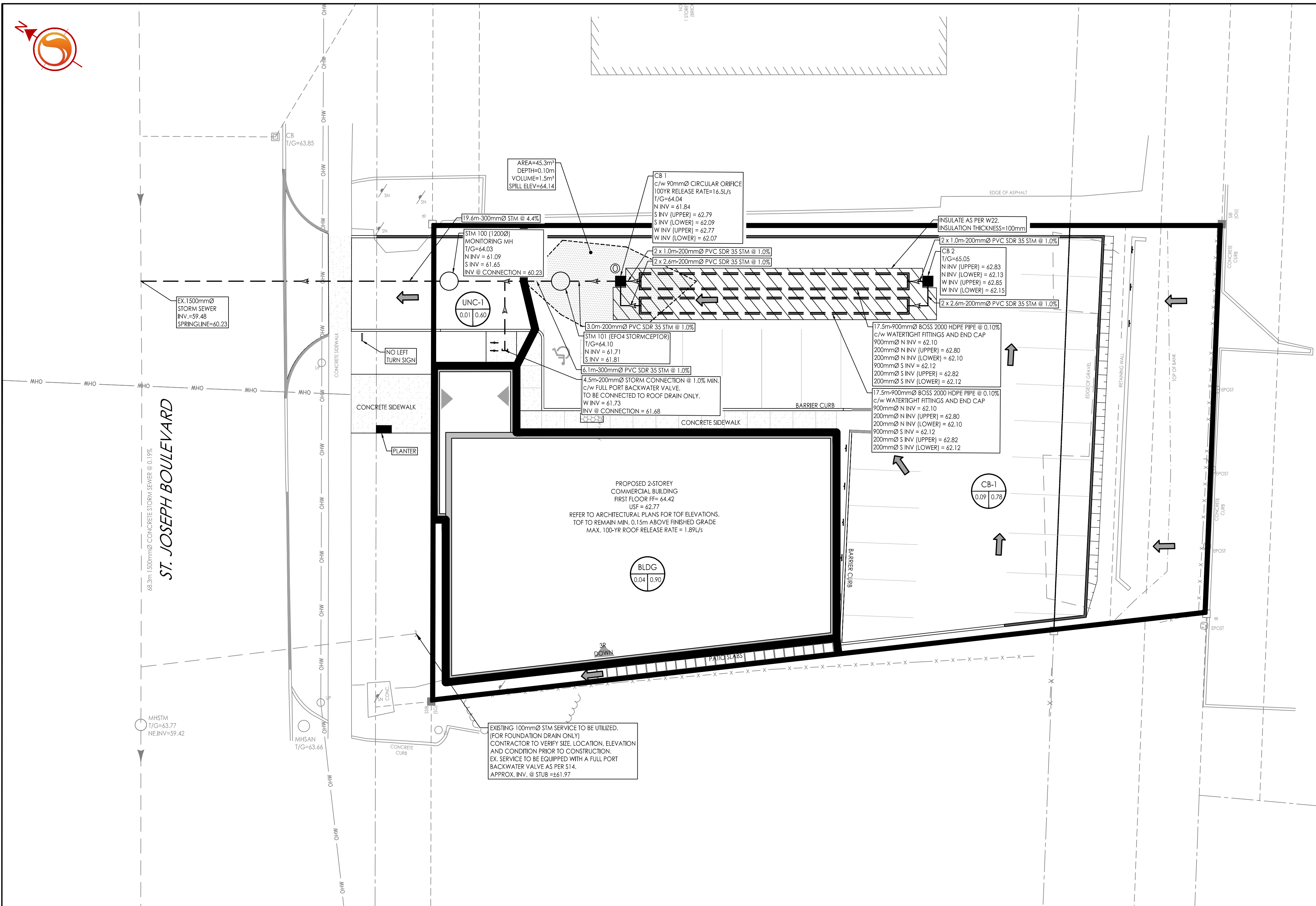
Project No. 160401518
Drawing No. SD-1
Scale 1:150
Sheet 5 of 5
Revision 6
PLANNING, DEVELOPMENT & BUILDING SERVICES DEPARTMENT, CITY OF OTTAWA

DRAINAGE AREA ID	DRAIN TYPE	# DRAINS	100 YEAR HEAD (m)	100 YEAR RELEASE RATE (L/s)
BLDG	WATTS ACCU/FLOW (25% OPEN)	2	0.15	1.89

CATCHBASIN ID	AREA ID	TYPE	100YR HEAD (m)	100YR RELEASE RATE (L/s)
CB 1	CB-1	90mmØ CIRCULAR ORIFICE	0.86	16.5

JOHN SEVIGNY C.E.T.
MANAGER (A), DEVELOPMENT REVIEW EAST
PLANNING, DEVELOPMENT & BUILDING SERVICES DEPARTMENT, CITY OF OTTAWA

APPROVED
By sevignyjo at 11:50 am, Oct 23, 2024



\\Ca22\Bepard\01\64\active\160401518\design\drawing\160401518 DB.dwg
24/05/24 8:58 AM W.P. Jensen, Warren