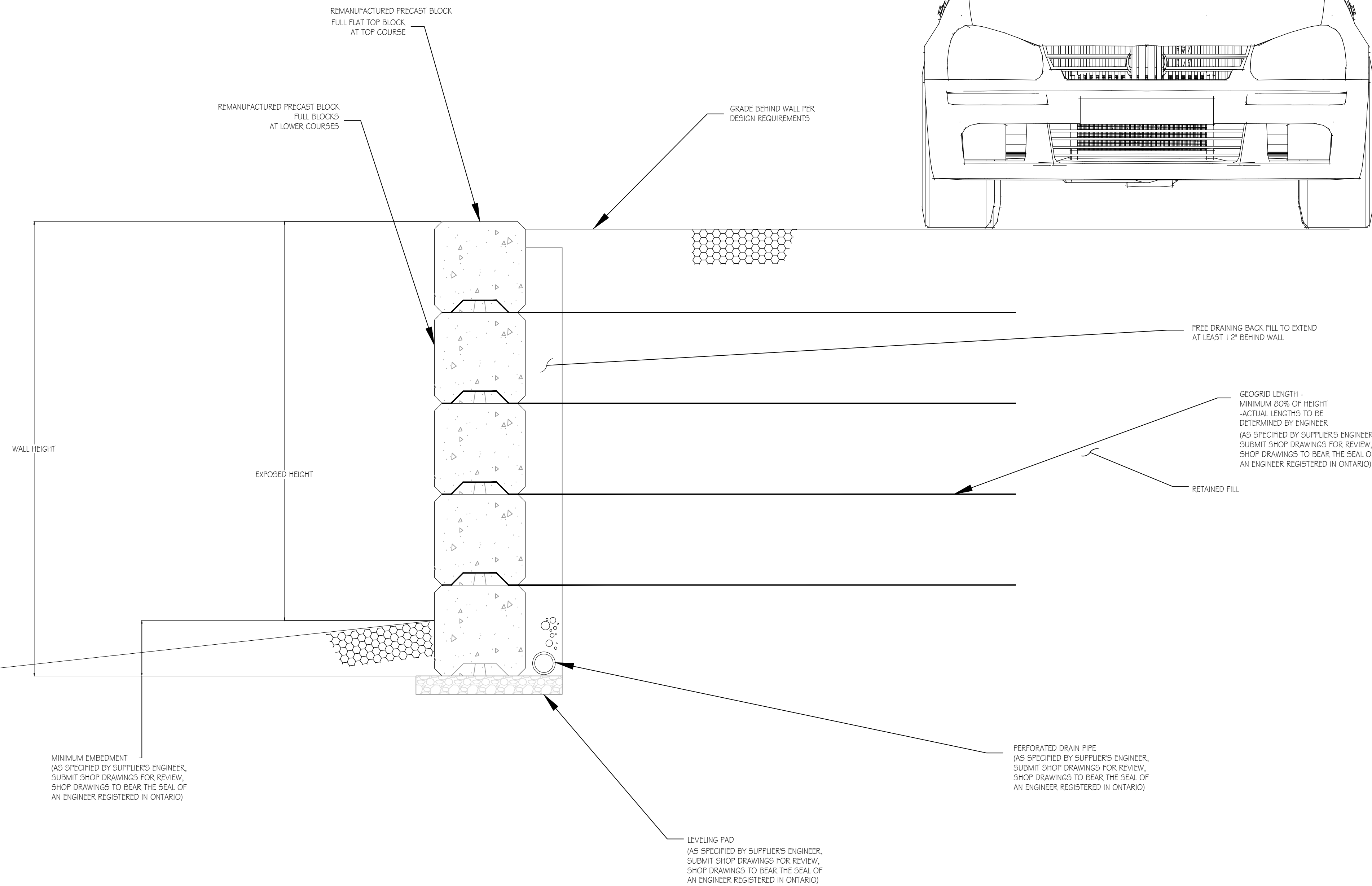
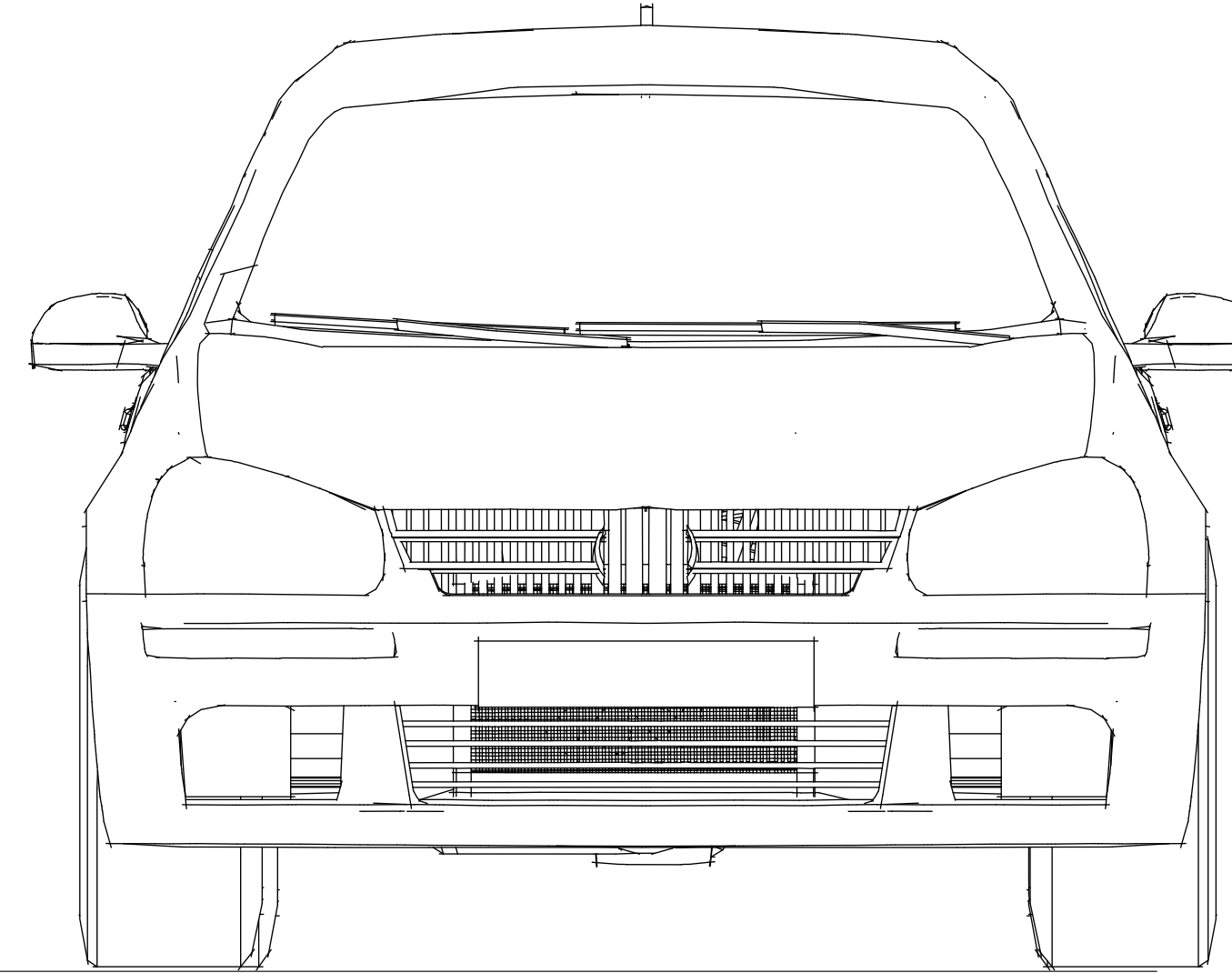


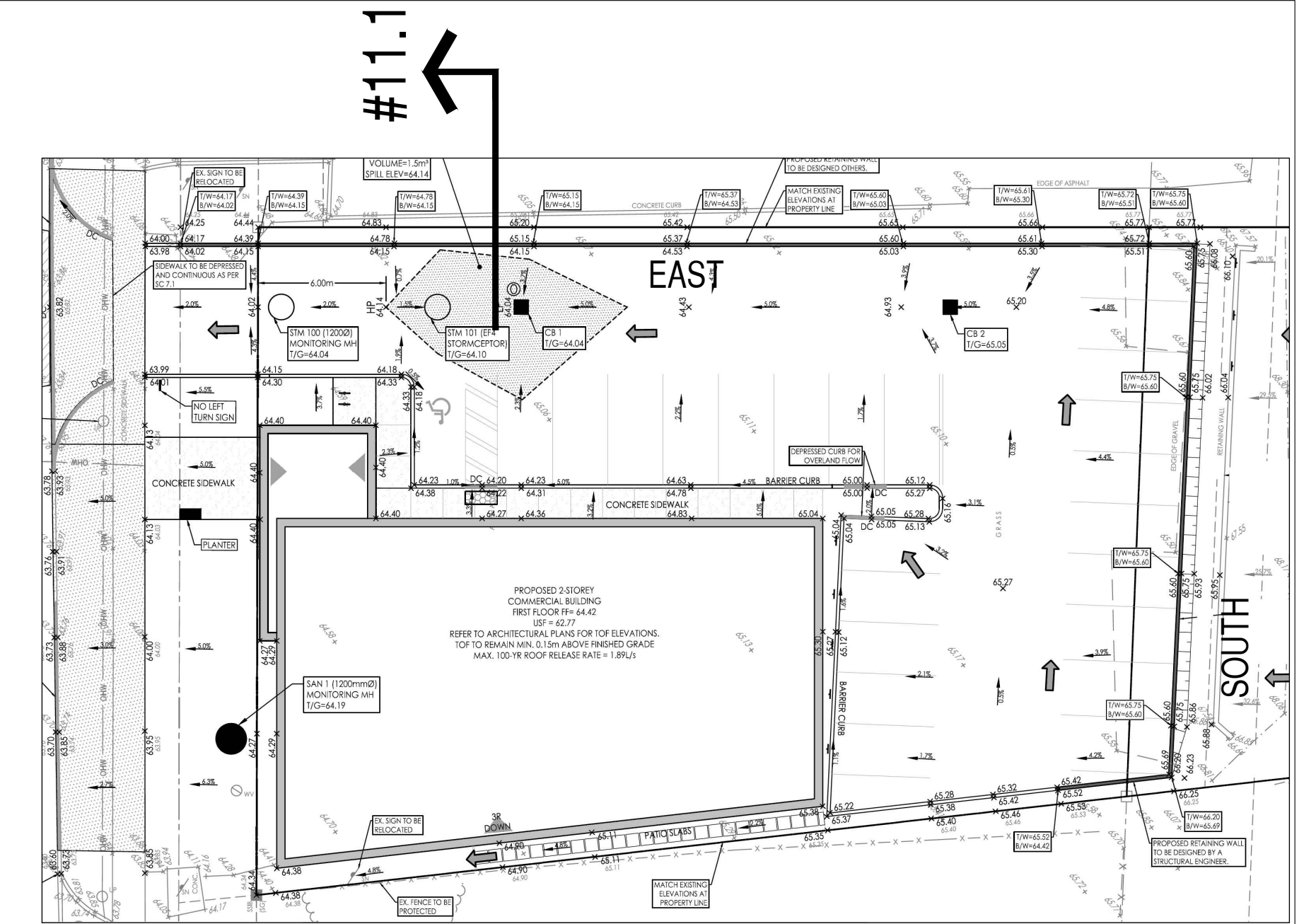
Notes:

- Contractor to submit shop drawings with Engineering stamp to certify the design.
- Loading should include the vehicle surcharge at the higher elevation.
- Railing (not shown for clarity) to be designed by steel fabricator, with Engineering stamp to certify the design. Railing post to be on sono tube, also part of the railing design.

DESIGN MUST INCLUDE VEHICLE SURCHARGE NEIGHBOR'S SIDE



#11.1 ~ Side wall details



RETAINING WALL KEY PLAN



Reference picture (similar construction for the side walls)

13		
12		
11		
10		
9		
8		
7		
6		
6		
5		
4		
3	insulation details updated as per Kallard Associates Engineers' drawing	August 28, 2024
2	addition to existing retaining wall (grade is proposed to be lowered)	May 6, 2024
1	preliminary	January 2021

DAIDO GROUP INC.
STRUCTURAL ENGINEERS
 11-300 Earl Grey Drive, Suite 213,
 Ottawa, Ontario K2T 1C1
 TEL: (613) 302-8972
 E.MAIL: daidogroup@gmail.com
 Web Site: https://daidogroup.wixsite.com/daido



PROJECT
Orleans Physio
 1994 St. Joseph Blvd.,
 Ottawa, Ontario

TITLE
SIDE WALL DETAILS
 (East Wall)

DRAWN TRENCH TAI	OUR REF. DRAWINGS loc:\11994StJoseph\loc5ect.dwg loc:\11994StJoseph\loc5ect.dwg loc:\11994StJoseph\loc5ect.dwg loc:\11994StJoseph\loc5ect.dwg	DRAWING NO. S11 (of 11)
SCALE: N.T.S. (Asp. D SIZE)		