



Copyright Reserved

The Contractor shall verify and be responsible for all dimensions. DO NOT scale the drawing - any errors or omissions shall be reported to Stantec without delay.
The Copyrights to all designs and drawings are the property of Stantec. Reproduction or use for any purpose other than that authorized by Stantec is forbidden.

Legend

- BLDG AREA ID
- 1.00 0.90 RUNOFF COEFFICIENT
- STORM DRAINAGE AREA h/c
- STORM DRAINAGE BOUNDARY
- PROPOSED STORM SEWER
- PROPOSED CATCHBASIN
- PROPOSED DOOR LOCATIONS
- EXISTING STORM SEWER
- ▲ PROPOSED DOOR LOCATIONS
- ▨ INSULATION AS PER CITY STD W22
- ← DIRECTION OF OVERLAND FLOW
- MAXIMUM STATIC PONDING LIMITS
- ◎ CATCHBASIN TO BE INSTALLED WITH CIRCULAR ORIFICE (SEE DWG SD-1)

Notes

Revision	By	App'd.	YY.MM.DD
1	WAJ	AMP	20.07.17

File Name: 160401518-DB W.J. K.J.K. W.A.J. 20.01.15
 Dwn. Chkd. Dgn. YY.MM.DD

Permit-Seal

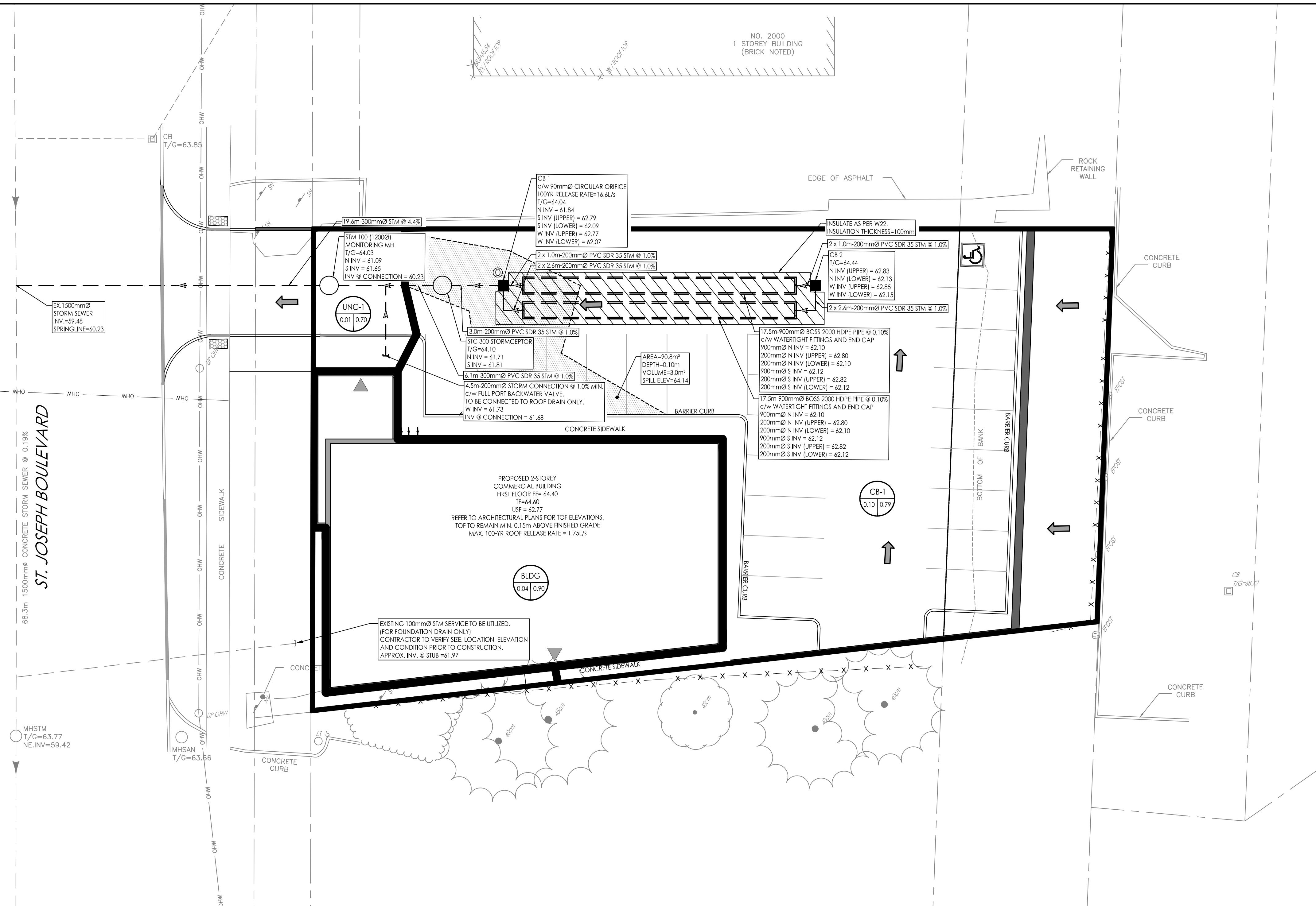
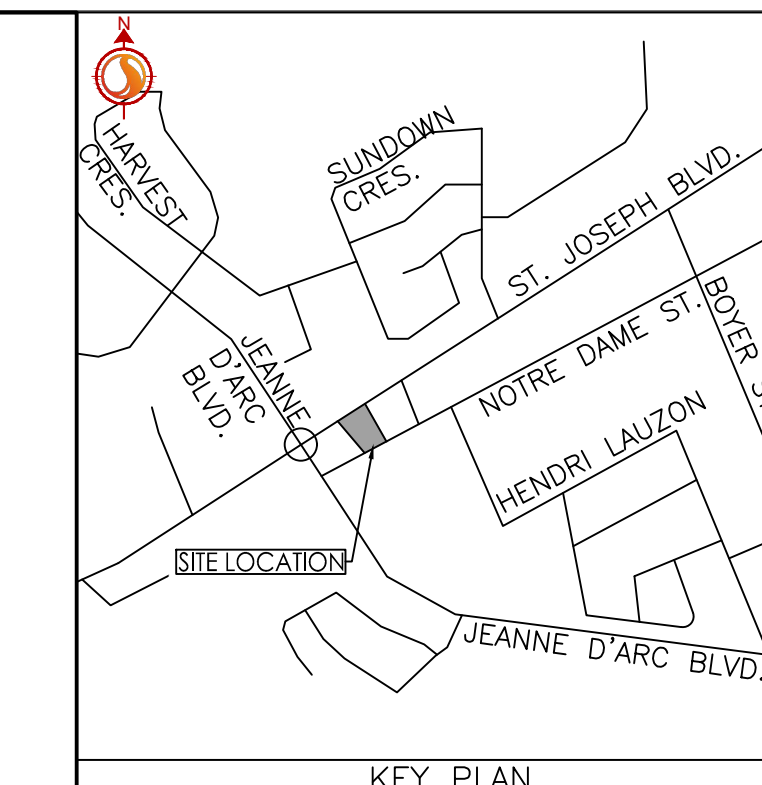
Client/Project
PULICKAL HOLDINGS INC.

TWO STOREY COMMERCIAL BUILDING
1994 ST-JOSEPH BLVD.
OTTAWA, ON

Title
STORM DRAINAGE PLAN

Project No. 160401518	Scale 1:150	0 1.5 4.5 7.5m
Drawing No.	Sheet	Revision

SD-1 5 of 5 1



SCHEDULE OF ROOF RELEASE RATES				
DRAINAGE AREA ID	DRAIN TYPE	# DRAINS	100 YEAR HEAD (m)	100 YEAR RELEASE RATE (L/s)
BLDG	WATTS ACCL/FLOW (25% OPEN)	2	0.13	1.75

SCHEDULE OF INLET CONTROL DEVICES				
CATCHBASIN ID	AREA ID	TYPE	100YR HEAD (m)	100YR RELEASE RATE (L/s)
CB 1	CB-1	90mmØ CIRCULAR ORIFICE	0.87	16.6

W:\projects\160401518\design\drawings\160401518 DB.dwg 2020/07/17 11:45 AM by rdding_jdp