

NOTES

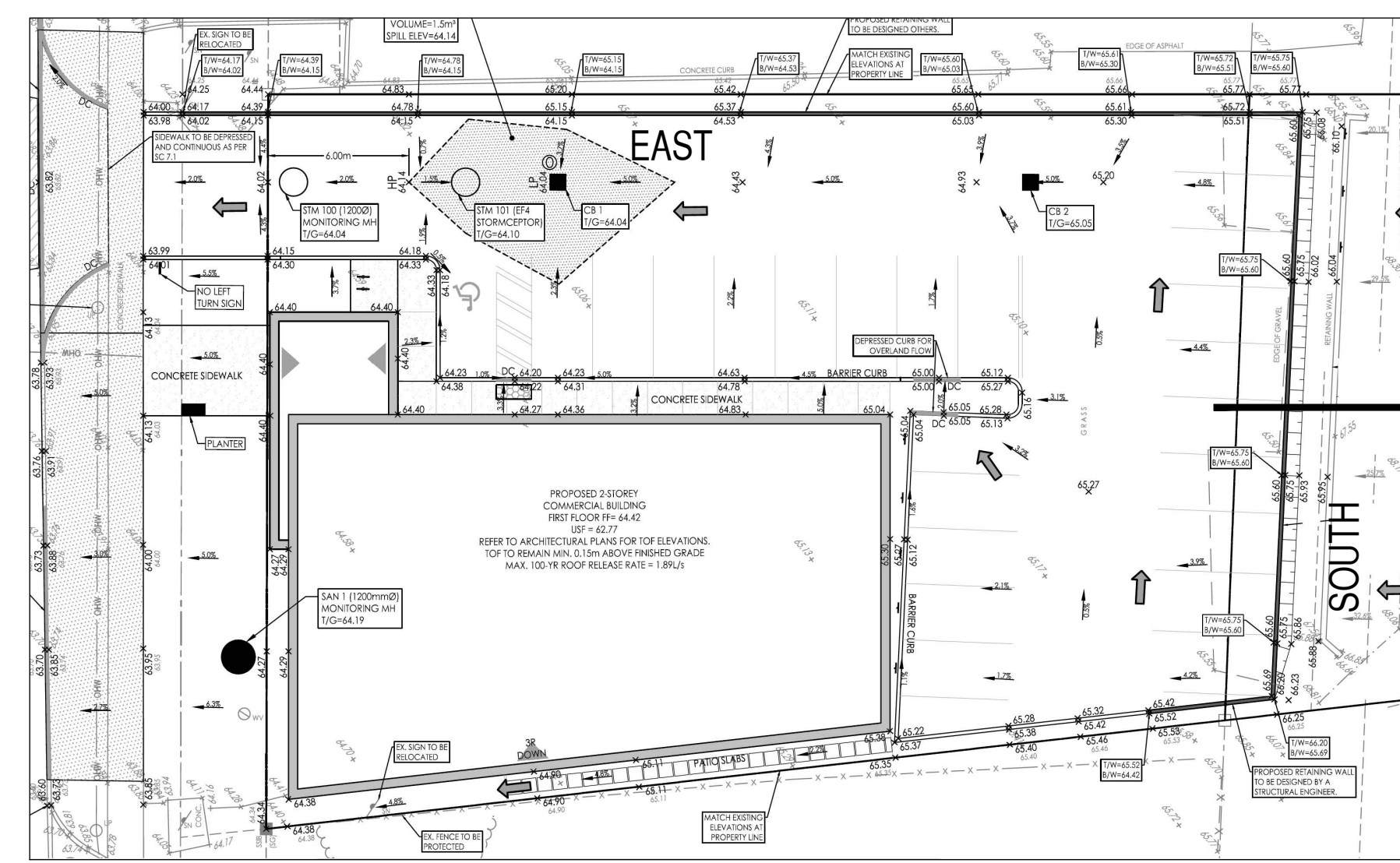
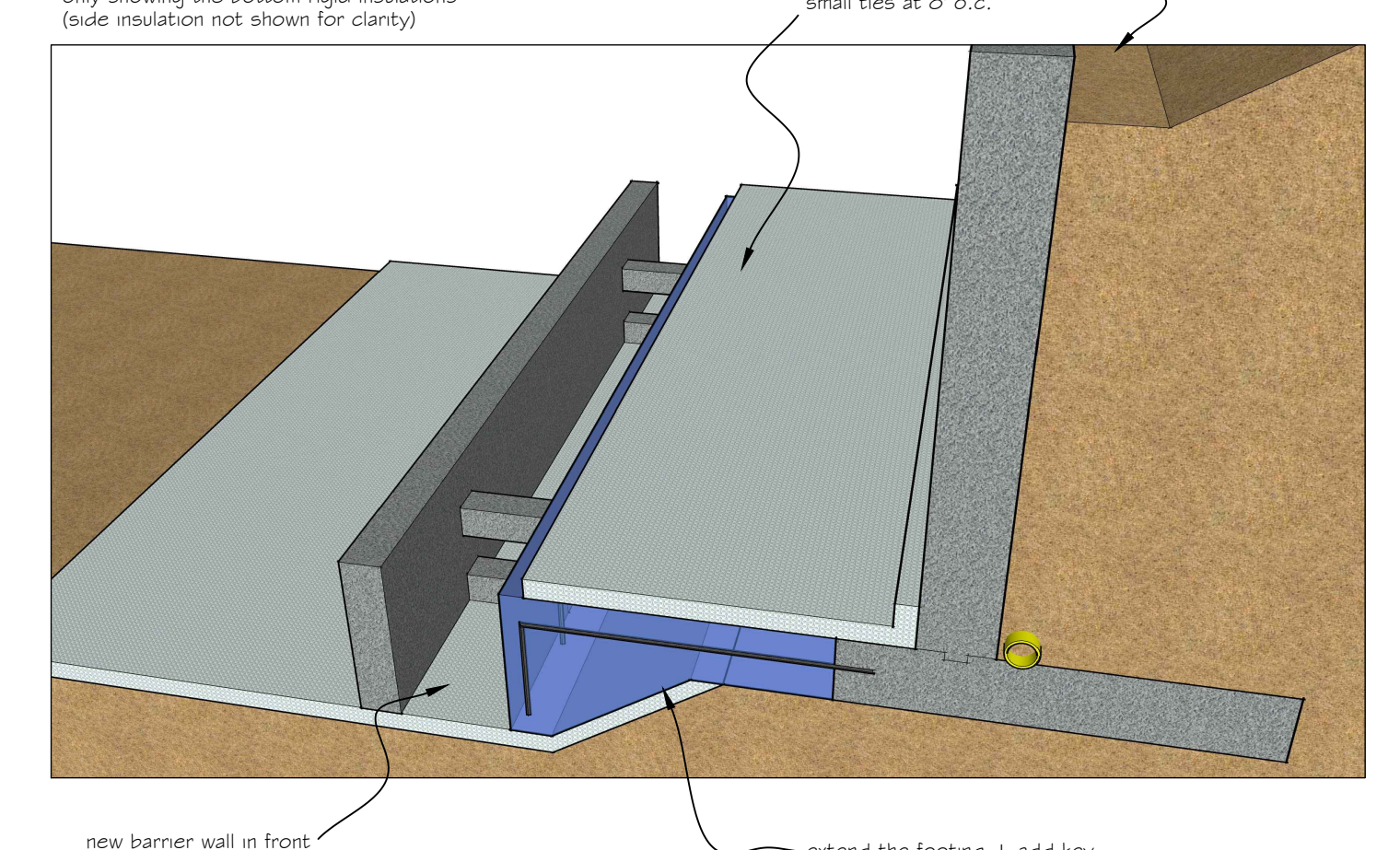
- (1) Insulation details updated as per Kollaard Associates Engineers drawing dated August 28, 2024
- (2) Minimum soil bearing capacity = 150 kPa (ULS) at the elevation as shown, confirmed by the soil engineer, as per Kollaard Associates Engineers Report, File # 190361, dated August 19, 2024

respect this line (1 : 1.5 slope) anything beyond the right hand side of this line will undermine the existing footing

#9.1 ~ REINFORCE TO EXISTING RETAINING WALL (SOUTH)

- Notes:
- ~ Concrete to be 30 mPa at 28 days, with 5% air (+/- 1%). Cement GU General use Hydraulic Cement
 - ~ Rebar 400 mPa, Galvanized (note that the soil is corrosive, according to soil report)
 - ~ Lap 42 x bar diameter, which is 630mm for 15m bar
 - ~ concrete cover 3" [76mm] typical
 - ~ vertical control joint (1/4" wide x 3/4" deep), at 25' o.c. maximum
 - ~ retaining wall at the south west corner is not built yet, step foundation (and with larger foundation/heavier reinforcement is expected) details to be provided to suit the site conditions, at the time of excavation

3d illustrations



RETAINING WALL KEY PLAN

13		
12		
11		
10		
9		
8		
7		
6		
5		
4		
3	insulation details updated as per Kollaard Associates Engineers' drawing	August 28, 2024
2	addition to existing retaining wall (grade is proposed to be lowered)	May 6, 2024
1	preliminary	January 2021

DAIDO GROUP INC.
 STRUCTURAL ENGINEERS
 11-300 Earl Grey Drive, Suite 213,
 Ottawa, Ontario K2T 1C1
 TEL: (613) 302-8972
 E-MAIL: daidogroup@gmail.com
 Web Site: https://daidogroup.wixsite.com/daido



PROJECT
Orleans Physio
 1994 St. Joseph Blvd.,
 Ottawa, Ontario

TITLE
REINFORCEMENT TO EXISTING RETAINING WALL DETAILS (South Wall)

DRAWN
 TRENCH TAI

OUR REF. DRAWINGS
 local: 1994StJosephRetWallSec1.dwg
 v:\data\11407\Trench\116.dwg
 v:\data\116.dwg
 v:\data\116.dwg

DRAWING NO.
S9
 (of 11)

SCALE: 1" = 1'-0"
 (Arch D 3022)