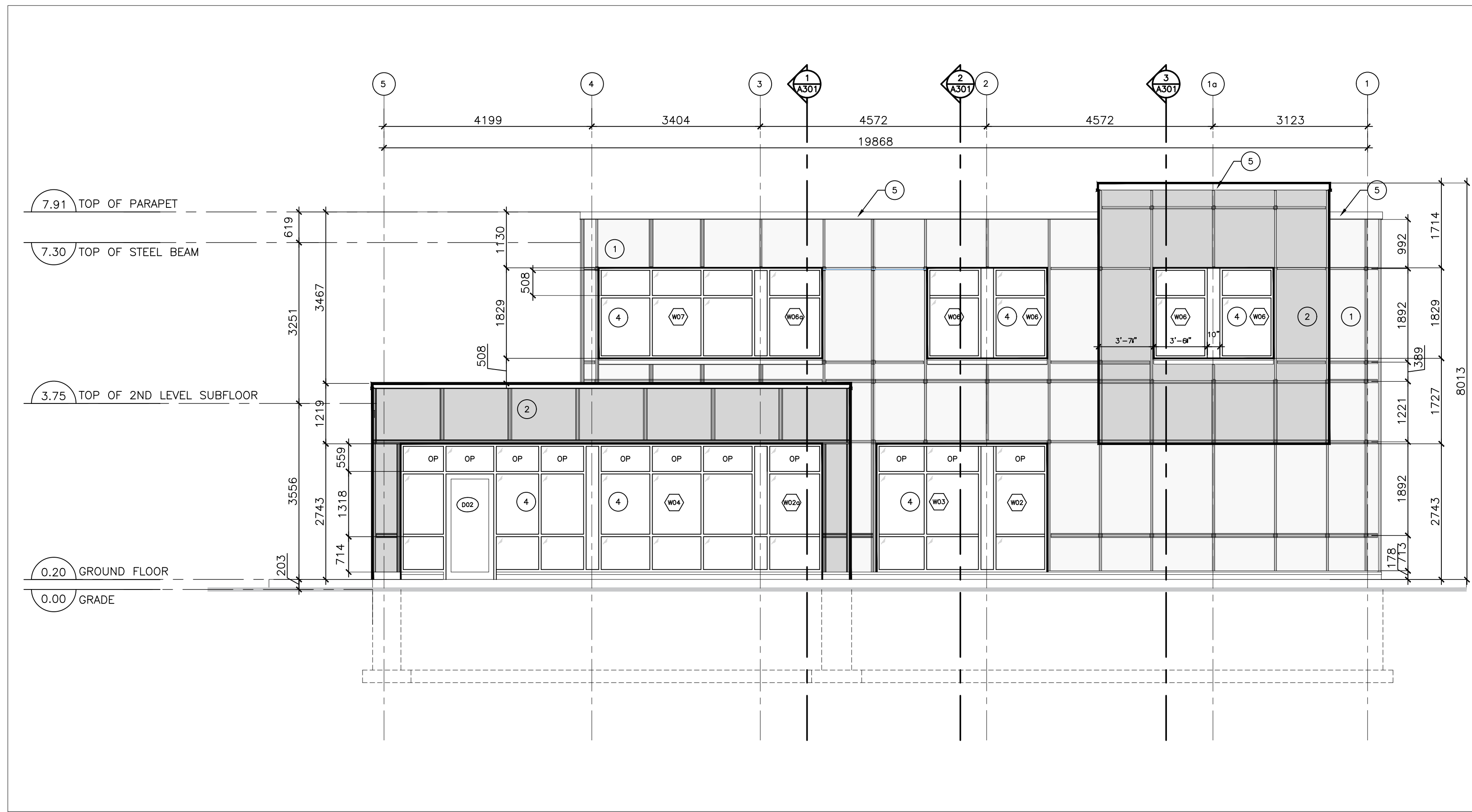
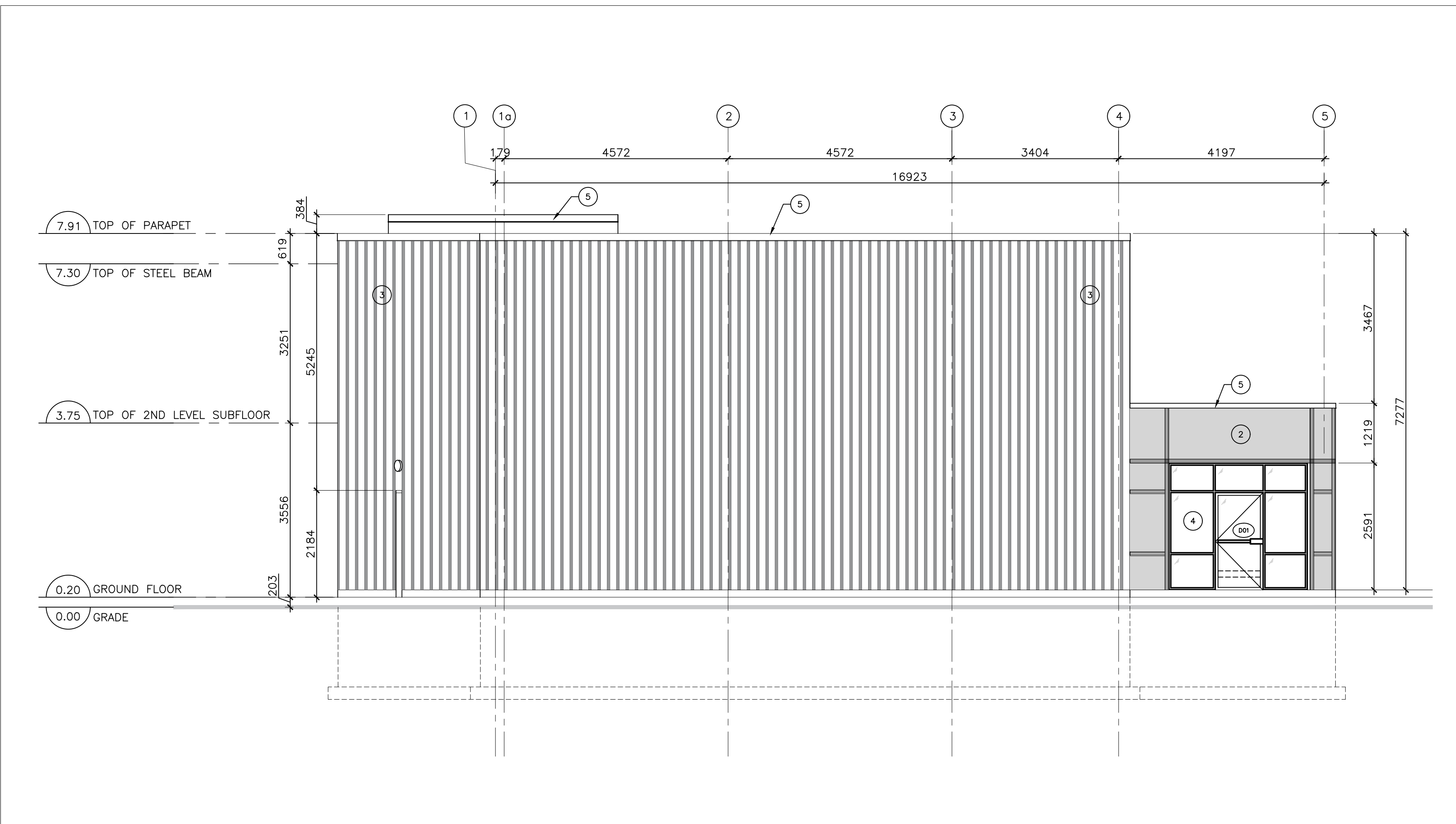


2022-05-31P:\1964 - 1994 St Joseph (Pickard)\4. Arch Working Drawings\CAD\Sections & Elevations.dwg



1 NORTH ELEVATION
A200 3/16"=1'-0"



2 SOUTH ELEVATION
A200 3/16"=1'-0"

CONSTRUCTION NOTES:

ROOF COMPOSITION:

- R1** FLAT ROOF / TERRACE
BASED ON ASSEMBLY (F28d) OF SB-3 (OBC 2012)
 - 2" SLOPED RIGID INSULATION
 - 2 PLY MOD. BIT ROOFING MEMBRANE (WRAP UP AND OVER PARAPET)
 - 5/8" PLYWOOD ON TAPERED WOOD SLEEPERS, 2% SLOPE TO DRAIN/SCUPPER.
 - ENGL. JOIST, SEE STRUCTURAL DWGS FOR REQUIREMENTS
 - R50min. ROXUL INSULATION WITHIN FRAMING CAVITY.
 - 6mil. POLY VAPOUR BARRIER
 - 3/8" HAT CHANNELS AT 16" O.C.
 - 2 LAYERS 5/8" SHEETROCK FIRECODE CORE GYPSUM PANELS (EXTERIOR GRADE GWB OR DENS-GLASS GOLD SHEATHING AT EXTERIOR CONDITIONS). PANELS SCREW ATTACH, JOINTS STAGGER AND FINISH
 - SEAL ALL GAPS AND PENETRATIONS W/ FIRE-RATED ACOUSTICAL SEALANTS, CONTINUOUS

WALL COMPOSITION:

- W1** TYPICAL NEW FOUNDATION WALL
 - 2" RIGID INSULATION (CONTINUOUS BELOW GRADE)
 - SELF-ADHERING WATERPROOFING MEMBRANE ON
 - POURED CONCRETE
- W2** TYPICAL EXTERIOR WALL (NON-COMBUSTIBLE CONSTRUCTION) - BASED ON ASSEMBLY (S10q) OF SB-3 (OBC 2012)
 - 7/8" CORRUGATED METAL CLADDING
 - 1/2" THICK METAL CLADDING + 2" "Z" GIRT
 - AIR BARRIER.
 - 2" ROXUL CAVITY ROCK OR APPROVED EQUIVALENT EXTERIOR INSULATION (CONTINUOUS)
 - 1 LAYER 5/8" EXTERIOR GRADE TYPE "X" GYPSUM BOARD.
 - 6" STEEL STUDS @ 16" O.C.
 - 5.5" ROXUL AFB BATT INSULATION.
 - VAPOUR BARRIER
 - 1 LAYER 5/8" TYPE "X" GYPSUM BOARD
- W3** TYPICAL EXTERIOR WALL (COMBUSTIBLE CONSTRUCTION) - BASED ON ASSEMBLY (EW1a) OF SB-3 (OBC 2012)
 - 1/2" THICK METAL CLADDING + 2" "Z" GIRT OR 3 1/2" THICK STONE/BRICK VENEER (REFER TO ELEVATIONS FOR MATERIAL LOCATIONS)
 - AIR BARRIER.
 - 2" ROXUL CAVITY ROCK OR APPROVED EQUIVALENT EXTERIOR INSULATION (CONTINUOUS)
 - 1/2" EXTERIOR GRADE PLYWOOD
 - 6" STEEL STUDS @ 16" O.C.
 - 5.5" ROXUL AFB BATT INSULATION.
 - VAPOUR BARRIER
 - 1 LAYER 5/8" TYPE "X" GYPSUM BOARD

PARTITION COMPOSITION:

- W6** TYPICAL INTERIOR PARTITION
 - 1/2" G.B. ON BOTH SIDES
 - (1/2" CEMENT BRD WHERE TILES ARE TO BE APPLIED)
 - 2" x 6" STEEL STUD @ 16" O.C.
- W7** TYPICAL DEMISING WALL/CORRIDOR PARTITION CONSTRUCTION (F.R.R. : 1hr per ULC Des W317)
 - STC:51
 - QUIETROCK
 - SIG. REPORT
 - #TL07-019
 - 1hr RATED
 - 1 LAYER 5/8" SHEETROCK FIRECODE CORE GYPSUM PANELS
 - 2x6 STEEL STUDS @ 16" O.C. MAX.
 - 4" THERMAFIBER SAFB, FULL WIDTH AND HEIGHT OF CAVITY
 - 1 LAYER 5/8" QuietRock 525 PANELS
 - SEAL ALL GAPS AND PENETRATIONS W/ FIRE-RATED ACOUSTICAL SEALANTS, CONTINUOUS, BOTH SIDES
 - PRIME AND PAINT FINISH (CORRIDOR SIDE)
- W8** TYPICAL INTERIOR LOAD BEARING CONCRETE WALL CONSTRUCTION (F.R.R. : 1hr) ELEVATOR SHAFT WALL ?
 - 1 LAYER 5/8" GYPSUM BOARD (TYPE X)
 - 8" POURED CONCRETE
 - 1 LAYERS 5/8" GYPSUM BOARD (TYPE X)
 - SEAL ALL GAPS AND PENETRATIONS W/ FIRE-RATED ACOUSTICAL SEALANTS, CONTINUOUS, BOTH SIDES
 - PRIME AND PAINT FINISH (CORRIDOR SIDE)

FLOOR COMPOSITION:

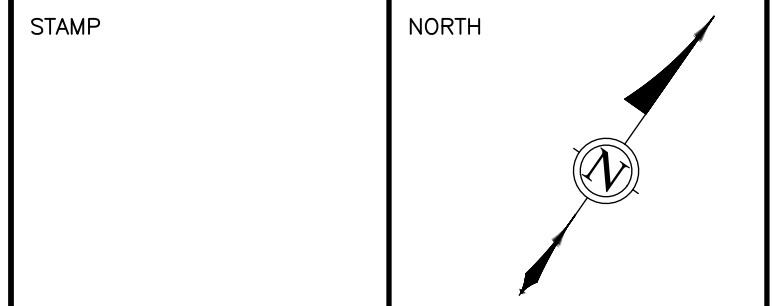
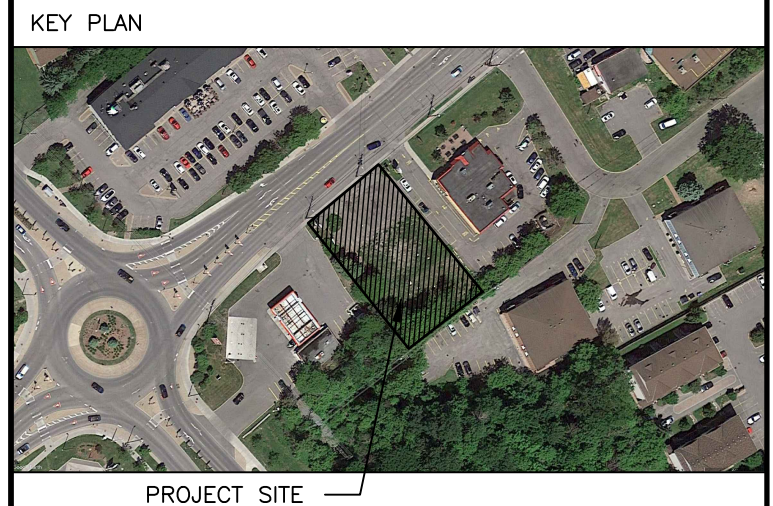
- F1** TYPICAL CONCRETE SLAB ON GRADE (F.R.R. : N/A)
 - FLOOR FINISH: PAINT AND SEAL. SEE ALSO FINISH SCHEDULE.
 - 5" POURED CONCRETE FLOOR C/W STEEL MESH AND REINFORCING PER STRUCTURAL DWGS.
 - VAPOUR BARRIER
 - R15 RIGID INSULATION FIRST METER AT PERIMETER, R5 BALANCE.
 - 2" SAND
 - 4" GRAVEL
 - COMPACTED FILL
 - F2** TYPICAL FLOOR CONSTRUCTION (SB-3 WOOD FLOOR JOISTS ASSEMBLY No. F28g)
 - 5/8" OSB SUBFLOOR,
 - WOOD FLOOR FRAMING, REFER TO STRUCTURAL DWGS FOR REQUIREMENTS.
 - 8"ROXUL INSULATION IN FLOOR CAVITY.
 - RESILIENT CHANNELS SPACED AT 16" O/C.
 - 1/2" TYPE X GYPSUM BOARD.
 - SEAL ALL GAPS AND PENETRATIONS W/ FIRE-RATED ACOUSTICAL SEALANTS, CONTINUOUS.
- AT SOFFIT CONDITION.
- FILL FLOOR FRAMING CAVITY.
 - 2" RIGID INSULATION BELOW FLOOR FRAMING.
 - PREFINISHED METAL VENTED SOFFIT.

COMMON COMPOSITION NOTES:

- PROVIDE COMPRESSIBLE FOAM GASKET BETWEEN METAL AND CONCRETE.
- SET BOTTOM TRACK IN COUBLE CONTINUOUS BEAD OF SEALANT. SILL AND TOP PLATE IN CONTINUOUS SEALANT.
- PROVIDE FIRE-RATED ACOUSTICAL SEALANTS TO CLOSE PERIMETER (TOP, BOTTOM, VERTICAL INTERSECTS) JOINTS AND OPENINGS WHERE MECHANICAL, PLUMBING, ELECTRICAL OR OTHER DEVICES PENETRATE THROUGH SOUND RATED WALLS.
- PROVIDE GWB ON FINISHED SIDE ONLY AT CHASES/FURRED SITUATIONS.
- PROVIDE MOISTURE RESISTANT (MR) GWB AT ALL WET AREAS AND AREAS PRONE TO MOISTURE. PROVIDE 3/8" CEMENT BOARD IN WASHROOM AREAS, JANITOR'S CLOSET, WHERE TILE ARE TO BE APPLIED.
- PROVIDE PLYWOOD BACKING/WOOD BLOCKING WHERE REQUIRED.
- COORDINATE ALL WINDOW AND DOOR ROUGH OPENINGS WITH SCHEDULE AND MANUFACTURER INSTALLATION DETAILS AND RECOMMENDATIONS.

FINISH SCHEDULE:

- 1 CEMFORT CEMENT PANELS, OR EQUIV., COLOUR "CAMBRIDGE WHITE"
- 2 CEMFORT CEMENT PANELS, OR EQUIV., ACCENT COLOUR "REGENT GREY"
- 3 PREFINISHED METAL SIDING EQUIV TO IDEAL ROOFING 22 GAUGE CORRUGATED 7/8" C-360 COLOUR TO ARCHITECTS APPROVAL
- 4 CLEAR ANODIZED, THERMALLY BROKEN FRAMES, C/W CLEAR DOUBLE GLAZED HERMETICALLY SEALED LITES
- 5 PREFINISHED METAL FLASHING COLOUR TO ARCHITECTS APPROVAL



ALL CONTRACTORS TO VERIFY ALL DIMENSIONS ON SITE AND TO REPORT ALL ERRORS AND/OR OMISSIONS TO THE ARCHITECT.

ALL CONTRACTORS MUST COMPLY WITH ALL CODES AND BYLAWS AND OTHER AUTHORITIES HAVING JURISDICTION OVER THE WORK.

DO NOT SCALE DRAWINGS.

THIS DRAWING MAY NOT BE USED FOR CONSTRUCTION UNTIL SIGNED BY THE ARCHITECT. COPYRIGHT RESERVED.

14		
13		
12		
11		
10		
09		
08		
07		
06		
05		
04		
03	ISSUED FOR CLIENT REVIEW	06/03/21
02	ISSUED FOR CLIENT REVIEW	05/31/21
01	ISSUED FOR CLIENT REVIEW	04/23/21
NO.	REVISION	MM/DD/YY DATE



201-4 BEECHWOOD AVENUE, OTTAWA, ONTARIO, CANADA K1L8L9
TEL: 613 228 9850, FAX: 613 228 9848, mail@woodmanarchitect.com

CONSULTANTS:
STRUCTURAL -
MECHANICAL -
ELECTRICAL -

PROJECT:
**1994 ST. JOSEPH,
OTTAWA, ON**

DRAWING:
**NORTH & SOUTH
ELEVATION**

DATE	03 JUNE, 2021	JOB NO.	1964
SCALE	AS SHOWN	DRAWING NO.	
DRAWN BY	A.S., S.B.		
REVIEWED BY	R.J.W., R.W.		

A200
18575

D07-12-21-0021