

Cumming Cockburn Limited
 Consulting Engineers, Planners, and Environmental Scientists

NO.	REVISIONS	BY	DATE
0.	ISSUED FOR REVIEW & COMMENTS	R.P.	00/12/21
1.	ISSUED FOR UTILITY CIRCULATION	R.P.	01/01/18
2.	ISSUED FOR TENDER	R.P.	01/03/29

NOTE:
 The location of the utilities is approximate only, the exact location should be determined by consulting the municipal authorities and utility companies concerned.
 The contractor shall prove the location of utilities and shall be responsible for adequate protection from damage

**ST. JOSEPH BOULEVARD
 JEANNE D'ARC BOULEVARD TO
 COUSINEAU STREET**

WATERMAIN UPGRADE

R. G. HEWITT, P.ENG.
 Director Infrastructure Services Branch

W. NEWELL, P.ENG.
 Manager Infrastructure Services Division

Dwn: R.P. Chkd: Dec: J.J.M. Chkd:

Ottawa

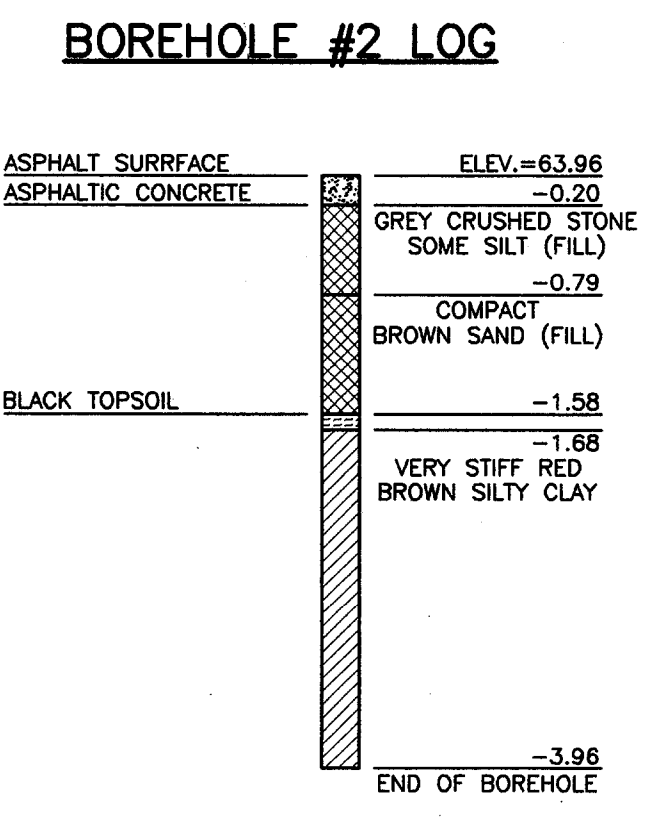
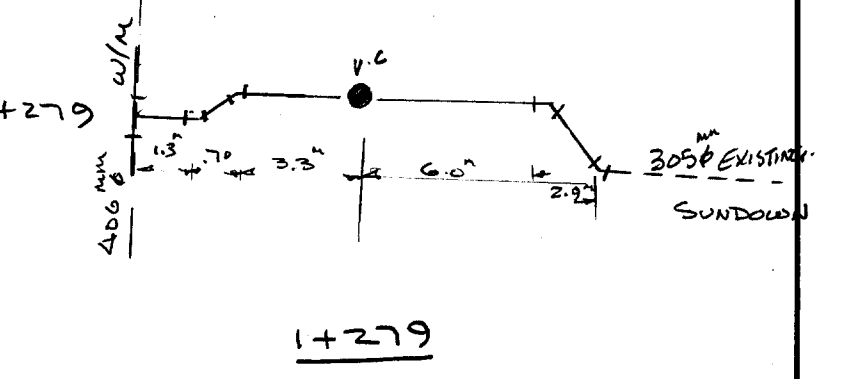
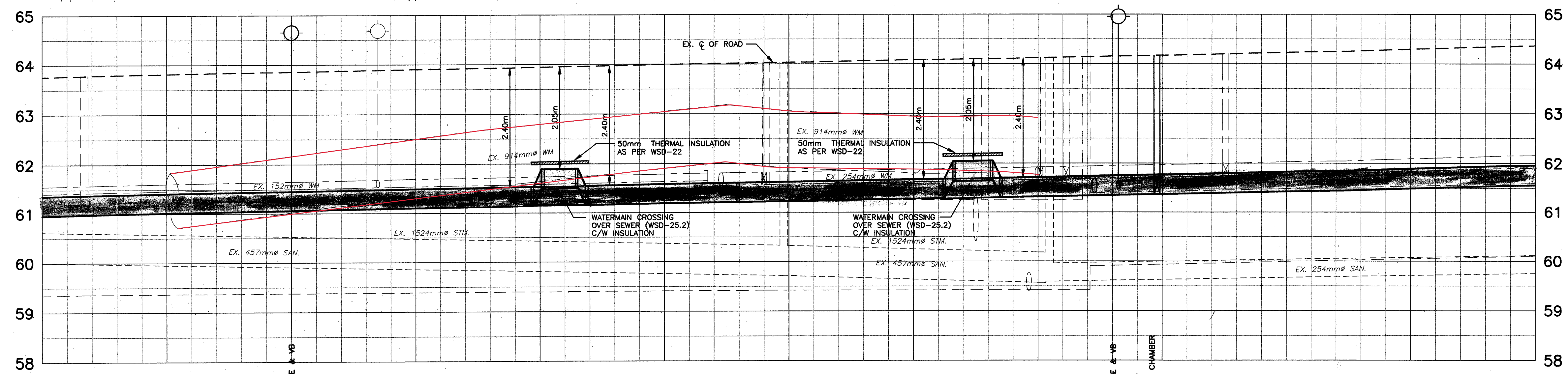
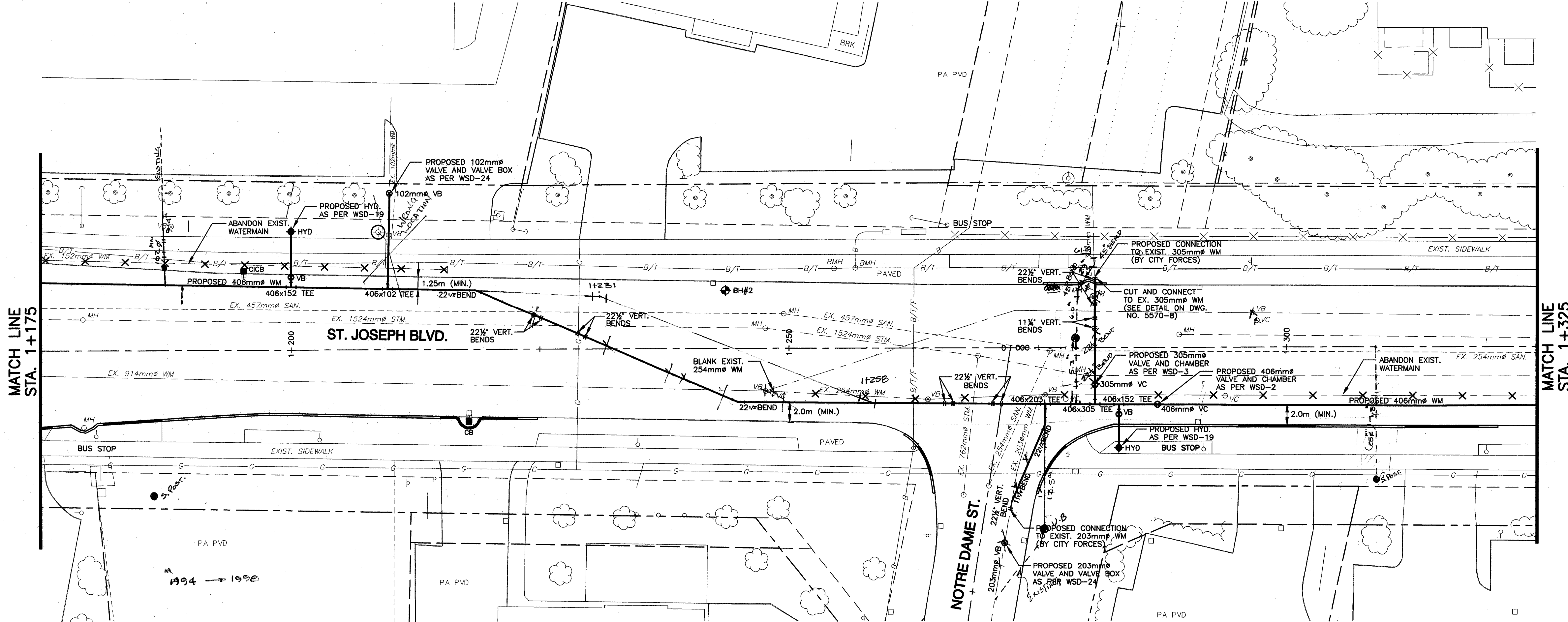
CONTRACT NO.
ETLOO-3065

DWG. NO.
5570-3

SHEET 3 OF 22
 Date: NOV. 2000

Scale: 1:250 HOR. 1:50 VER.
 0m 2.5 5 10

- NOTES**
- 1.) ALL WORK IN ACCORDANCE WITH CURRENT R.M.O.C. STANDARD SPECIFICATIONS AND DRAWINGS.
 - 2.) CONTRACTOR IS TO EXCAVATE AND DETERMINE EXACT LOCATIONS OF EXISTING WATERMAINS PRIOR TO CONNECTION.



EXISTING GROUND ELEVATIONS	TOP OF WATERMAIN ELEVATIONS	STATIONS
63.76	61.36	1+175
63.86	61.42	1+200
63.89	61.49	1+225
63.94	61.54	1+250
64.02	61.62	1+275
64.04	61.71	1+300
64.09	61.86	1+325