

CLIENT: **12213559**
Canada Inc

996-B St. Augustin Rd, Embury ON K0A 1W0
613-443-3575

CONSULTANTS

ARCHITECTS: **P2 concepts**
739 RIDGEWOOD AVE., UNIT 201
OTTAWA, ONTARIO, K1V 6M8

SURVEYORS: **ANNIS, O'SULLIVAN, VOLLEBECK LTD.**
14 Concourse Gate, Suite 500
Nepean, ON K2E 7S8
Phone: (613) 727-0850 / Fax: (613) 727-1079
Email: info@anniso.com

CIVIL ENGINEERS: **TATHAM ENGINEERING**

LEGEND

- EXISTING TREE TO REMAIN
- EXISTING TREE TO BE REMOVED
- PROPOSED CONCRETE WALKWAY
- PROPOSED DECIDUOUS TREE
- PROPOSED SHRUBS / ORNAMENTAL GRASSES
- PROPOSED SOD
- PROPOSED RIVERSTONE MULCH
- PROPOSED TREE PROTECTION FENCE
- PROPOSED BENCH

No.	Issue	Date	DR	CK
11	REVISED PER NEW SITE PLAN	07/19/2023	ML	JL
10	REVISED PER NEW SITE PLAN	04/27/2023	ML	JL
9	REVISED PER CITY COMMENTS	04/25/2023	ML	JL
8	REVISED PER UDRP COMMENTS	03/07/2023	ML	JL
7	PAVERS CHANGED TO CONCRETE	11/22/2022	ML	JL
6	REVISED PER NEW SITE PLAN	11/16/2022	ML	JL
5	REVISED PER NEW SITE PLAN	10/07/2022	ML	JL
4	ISSUED FOR DISCUSSION AND REVIEW	08/11/2022	ML	JL
3	REVISED PER NEW SITE PLAN	10/14/2021	ML	JL
2	ISSUED FOR DISCUSSION AND REVIEW	09/14/2021	ML	JL
1	ISSUED FOR SITE PLAN CONTROL	03/10/2021	ML	JL

JAMES B. LENNOX & ASSOCIATES INC.
LANDSCAPE ARCHITECTS
3332 CARLING AVE. OTTAWA, ONTARIO K2H 5A8
Tel: (613) 722-5168 Fax: (866) 343-3942

PROJECT: **PROPOSED RESIDENTIAL BUILDING**
5497 MANOTICK MAIN STREET, MANOTICK ON

DRAWING: **TREE CONSERVATION REPORT & LANDSCAPE PLAN**

STAMP: **ASSOCIATION OF LANDSCAPE ARCHITECTS OF ONTARIO**

SCALE: AS SHOWN

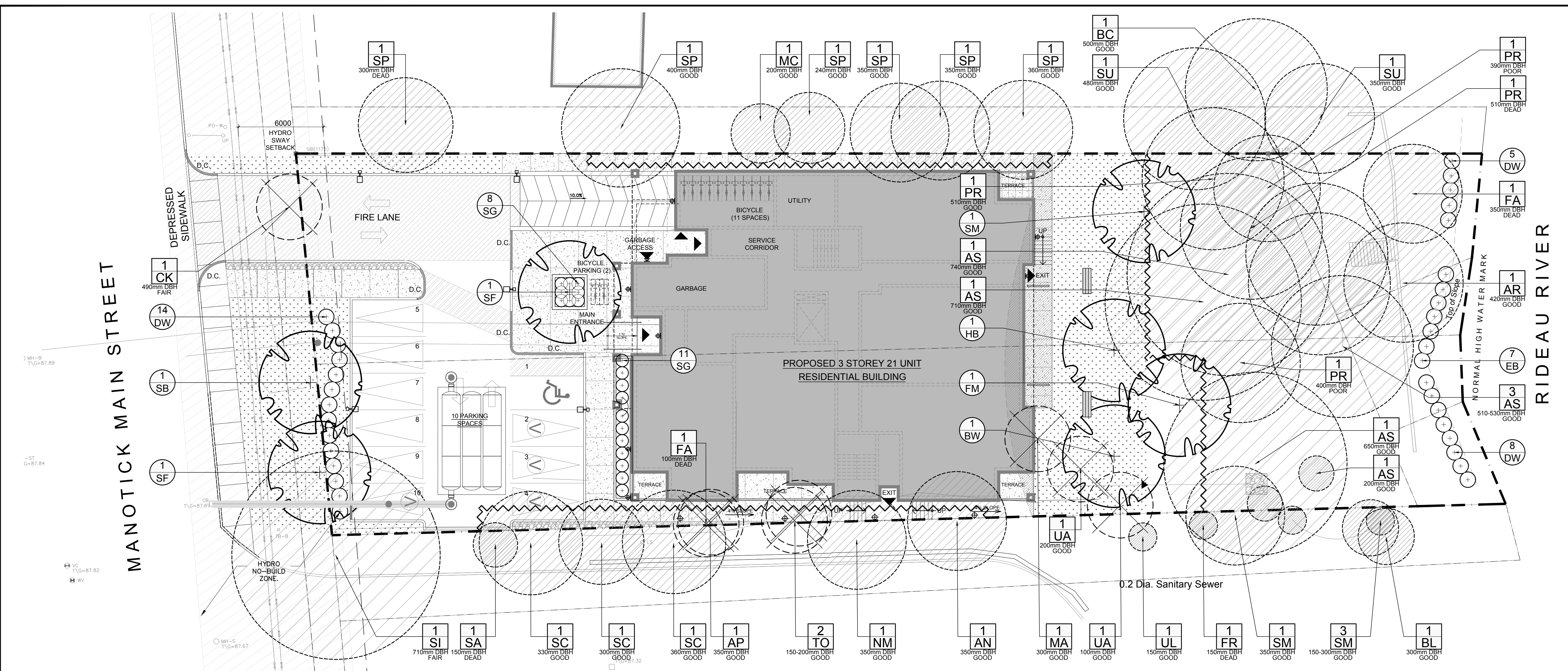
START DATE: NOVEMBER 2020

PROJECT NO.: 21MIS2107

PROJECT NORTH

DRAWING NO.: **L.1**

PLOT SIZE ARCH-D

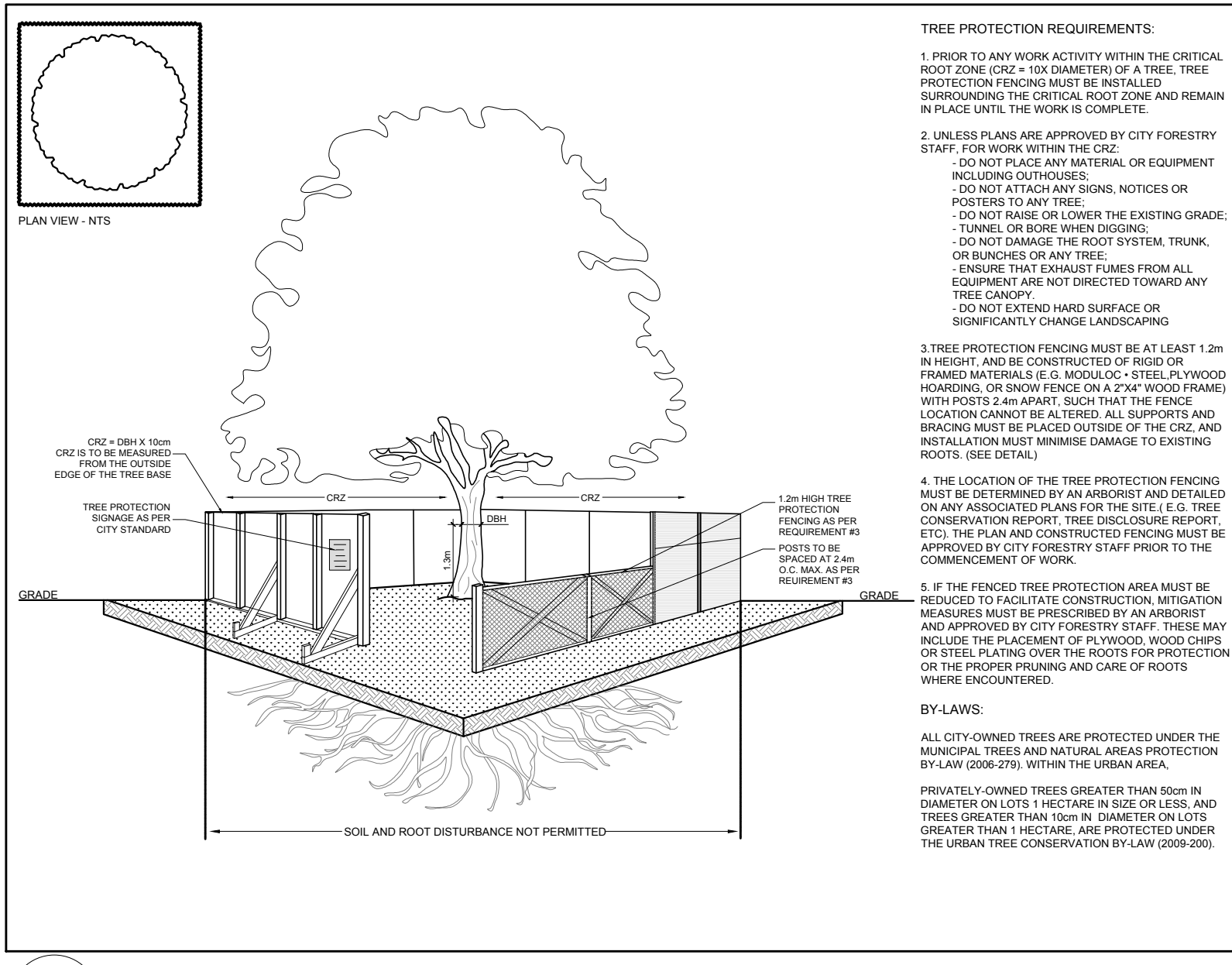
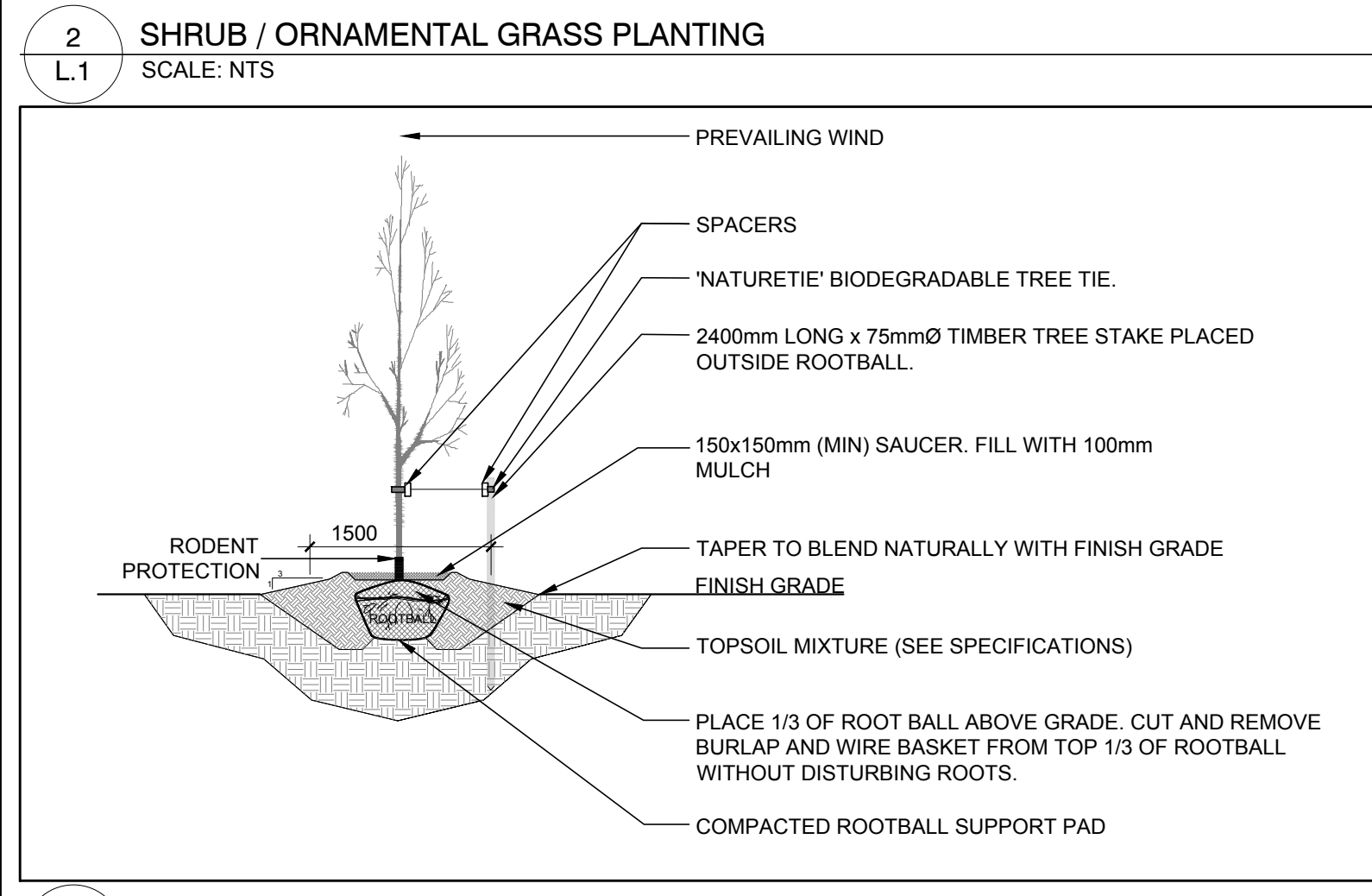
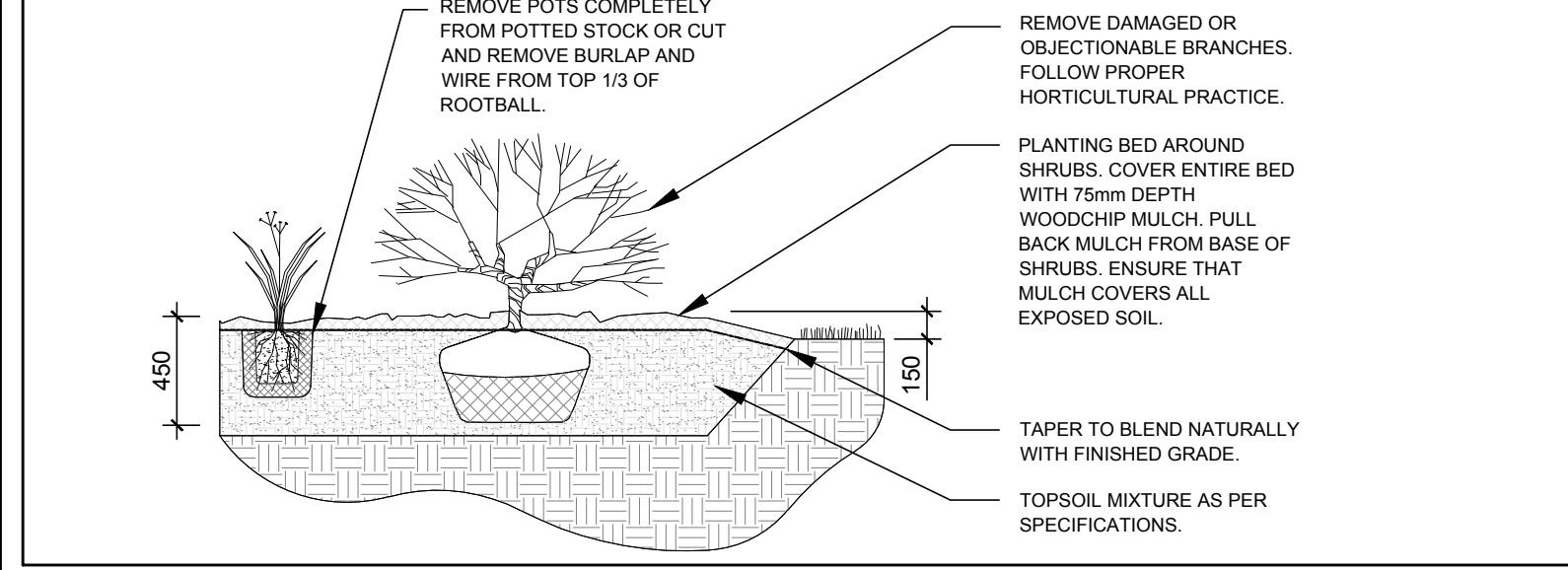


1 TREE CONSERVATION REPORT & LANDSCAPE PLAN
SCALE 1:150

EXISTING TREE LIST

KEY	QTY	BOTANICAL NAME	COMMON NAME	SIZE	CONDITION	REMARKS	OWNERSHIP
AN	1	<i>Acer negundo</i>	Manitoba Maple	350mm DBH	GOOD	See plan	5511 Manotick Main Street
AP	1	<i>Pinus nigra</i>	Austrian Pine	350mm DBH	GOOD	To remain	5495 & 5511 Manotick Main Street
AS	7	<i>Acer saccharum</i>	Sugar Maple	200-740mm DBH	GOOD	To remain	5497 Manotick Main Street
AR	1	<i>Acer rubrum</i>	Red Maple	420mm DBH	GOOD	To remain	5497 Manotick Main Street
BC	1	<i>Prunus serotina</i>	Black Cherry	500mm DBH	GOOD	To remain	5495 Manotick Main Street
BL	1	<i>Prunus serotina</i>	Black Cherry	300mm DBH	GOOD	To remain	5511 Manotick Main Street
CK	1	<i>Acer platanoides</i> 'Crimson King'	Crimson King Maple	490mm DBH	FAIR	To be removed	City of Ottawa
FA	2	<i>Fraxinus sp.</i>	Ash	100-350mm DBH	DEAD	See plan	5497 Manotick Main Street
FR	3	<i>Fraxinus americana</i>	White Ash	200-250mm DBH	GOOD	To remain	5511 Manotick Main Street
MA	4	<i>Malus sp.</i>	Crabapple	300mm DBH	GOOD	To be removed	5497 Manotick Main Street
MC	1	<i>Prunus macchii</i>	Manchurian Cherry	200mm DBH	GOOD	To remain	5495 Manotick Main Street
NM	1	<i>Acer platanoides</i>	Norway Maple	350mm DBH	GOOD	To remain	5511 Manotick Main Street
PR	4	<i>Prunus serotina</i>	Black Cherry	390-510mm DBH	DEAD-GOOD	To remain	5497 Manotick Main Street
SA	1	<i>Sorbus aucuparia</i>	Mountain Ash	150mm DBH	DEAD	To remain	5511 Manotick Main Street
SC	3	<i>Pinus sylvestris</i>	Scots Pine	300-360mm DBH	GOOD	To remain	5511 Manotick Main Street
SI	1	<i>Acer saccharum</i>	Silver Maple	710mm DBH	FAIR	To remain	5511 Manotick Main & City of Ottawa
SM	4	<i>Acer saccharum</i>	Sugar Maple	150-400mm DBH	GOOD	To remain	5511 Manotick Main & City of Ottawa
SP	6	<i>Pinus sylvestris</i>	Scots Pine	240-400mm DBH	DEAD-GOOD	To remain	5495 Manotick Main Street
SU	2	<i>Acer saccharum</i>	Sugar Maple	350-480mm DBH	GOOD	To remain	5495 Manotick Main Street
TO	2	<i>Thuja occidentalis</i>	White Cedar	150-200mm DBH	GOOD	To remain	5497 Manotick Main Street
UA	2	<i>Ulmus americana</i>	American Elm	100-200mm DBH	GOOD	To be removed	5497 Manotick Main Street
UL	1	<i>Ulmus americana</i>	American Elm	150mm DBH	GOOD	To remain	5511 Manotick Main & City of Ottawa

- GENERAL NOTES:**
- It is the responsibility of the appropriate contractor or official to report any errors, omissions or discrepancies on this plan with actual site conditions to the Landscape Architect before proceeding with construction.
 - The contractor is to notify all utility companies and authorities prior to any excavation and ascertain locations of underground services.
 - The contractor is to reinstall all areas and items damaged as a result of construction activity.
 - The contractor is to comply with all pertinent codes and by-laws.
 - The contractor is to maintain a positive surface run-off throughout the entire construction period.
 - The Landscape Architect is not responsible for subsurface conditions.
 - The contractor is to identify all existing trees to remain on site with the Landscape Architect prior to construction.
 - The contractor is to stake the proposed location of all plant material in conjunction with the Landscape Architect prior to excavation.
 - Minimum distances for selected deciduous trees are as follows:
 - Sidewalks 1.5m
 - Public Streets 2.5m
 - Underground Infrastructure 2.0m
 - All trees within 1m of underground utility trenches are to be excavated by hand.
 - Remove all protective wrapping from tree trunks after installation.
 - Staking of trees shall only be performed if necessary.
 - Ensure that mulch is pulled back a min. distance of 75mm from base of tree trunk.



PROPOSED PLANT LIST

KEY	QTY	BOTANICAL NAME	COMMON NAME	SIZE	CONDITION	REMARKS
TREES						
BW	1	<i>Tilia americana</i>	Basswood	60mm cal.	B&B	
FM	1	<i>Acer x freemanii</i>	Freeman's Maple	60mm cal.	B&B	
HB	1	<i>Celtis occidentalis</i>	Hackberry	60mm cal.	B&B	
SB	1	<i>Amelanchier canadensis</i>	Serviceberry	60mm cal.	B&B	
SF	2	<i>Amelanchier laevis</i> 'JFS-ARB'	Spring Flurry Serviceberry	60mm cal.	B&B	
SM	1	<i>Acer saccharum</i>	Sugar Maple	60mm cal.	B&B	
SHRUBS						
DW	27	<i>Cornus sericea</i>	Red Osier Dogwood	800mm ht.	Potted	1200 mm o.c.
EB	7	<i>Sambucus canadensis</i>	Elderberry	800mm ht.	Potted	1200 mm o.c.
ORNAMENTAL GRASSES						
SG	19	<i>Panicum virgatum</i> 'Shenandoah'	Shenandoah Switch Grass	250mm pot	Potted	800 mm o.c.