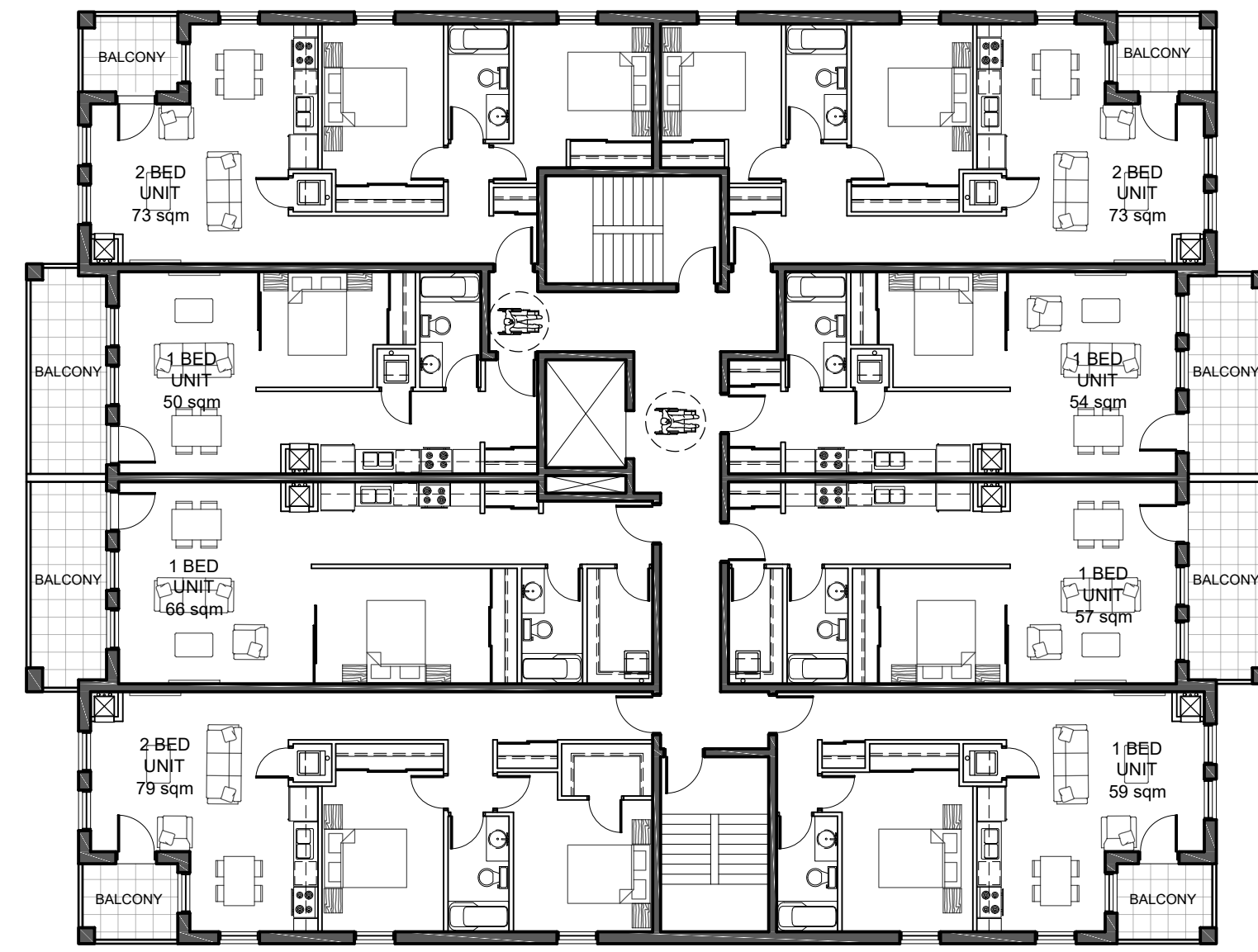
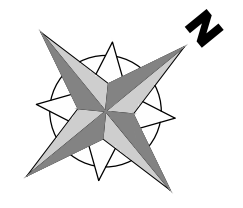


MANOTICK MAIN STREET

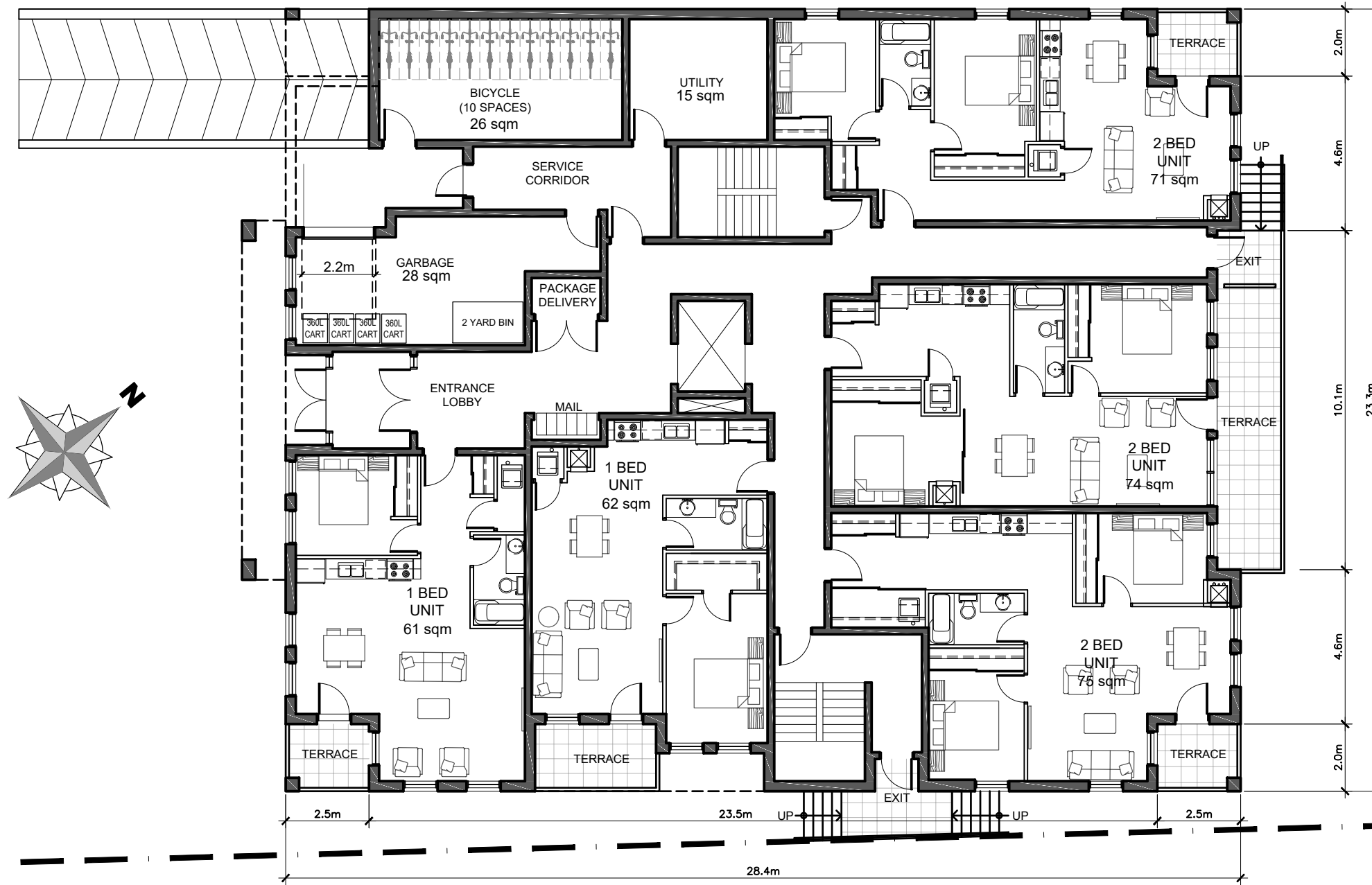
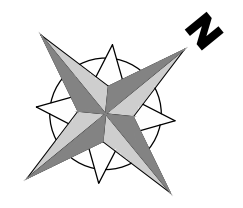
RIDEAU RIVER



SECOND AND THIRD LEVEL  
629 sqm

MANOTICK MAIN STREET

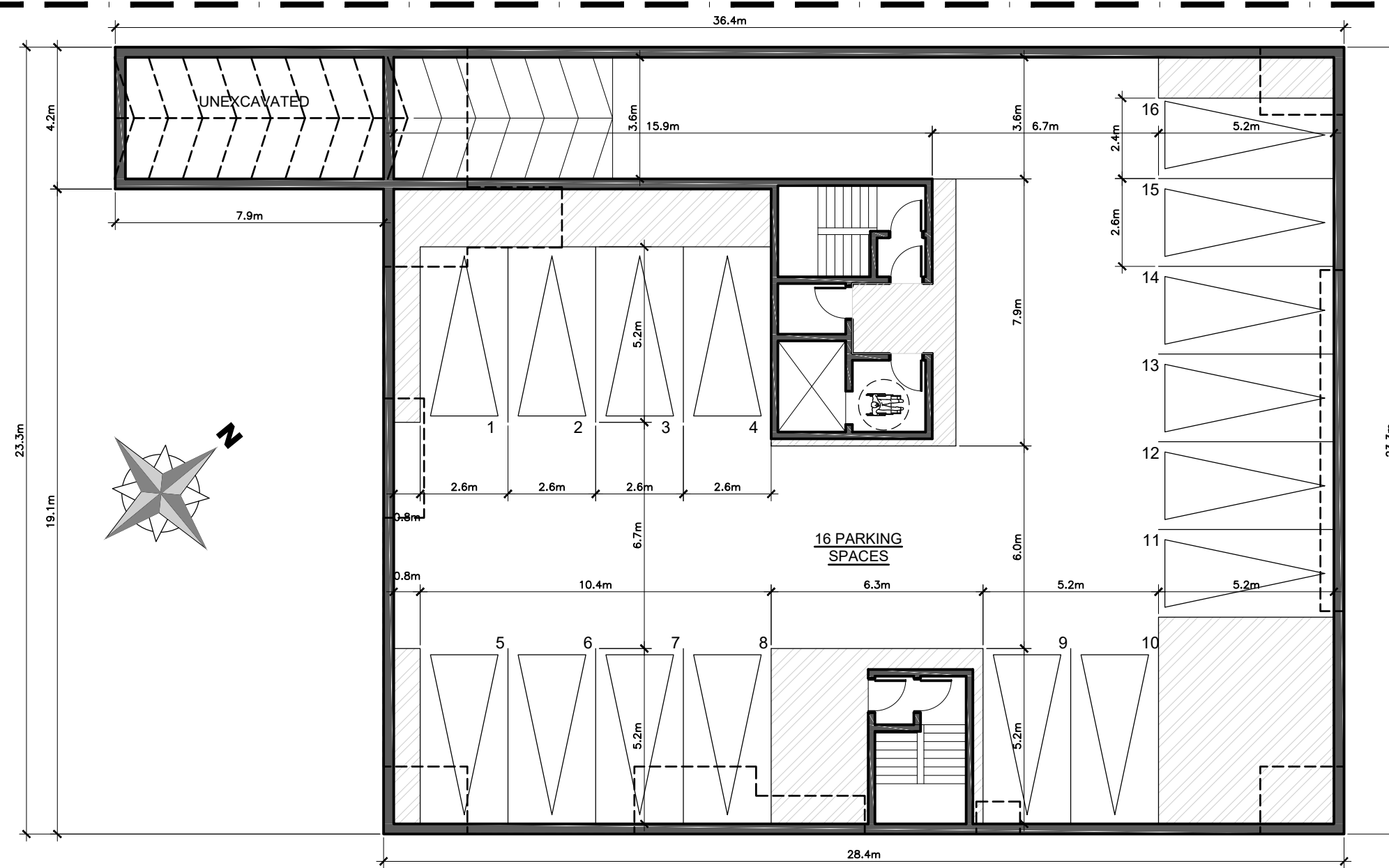
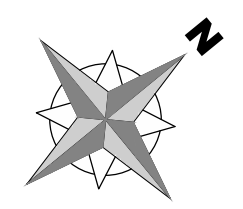
RIDEAU RIVER



MAIN / ENTRANCE LEVEL  
528 sqm

MANOTICK MAIN STREET

RIDEAU RIVER



UNDER GROUND PARKING LEVEL  
663 sqm

12213559  
Canada Inc

D<sup>2</sup>  
concepts  
738 RIVERWOOD AVE. UNIT 501  
OTTAWA, ONTARIO, K1V 6W8

|     |                  |    |               |
|-----|------------------|----|---------------|
| 11  |                  |    |               |
| 10  |                  |    |               |
| 09  |                  |    |               |
| 08  | FOR COORDINATION | PE | SEPT. 27 2022 |
| 07  | FOR REVIEW       | PE | JUNE 06 2022  |
| 06  | FOR COORDINATION | PE | JUNE 02 2022  |
| 05  | FOR COORDINATION | PE | APR. 26 2022  |
| 04  | FOR REVIEW       | PE | JUNE 29 2021  |
| 03  | FOR REVIEW       | PE | MAY 14 2021   |
| 02  | FOR REVIEW       | PE | APR. 27 2021  |
| 01  | FOR REVIEW       | PE | APR. 16 2021  |
| No. | REVISIONS        | BY | DATE          |

|       |             |
|-------|-------------|
| STAMP | NORTH ARROW |
|       |             |

DESIGNED BY: P.E. DRAWN BY: P.E. APPROVED BY: B.K.

PROJECT  
4977 MANOTICK MAIN

DRAWING TITLE  
FLOOR PLANS

PROJECT NO.  
0387  
DATE  
SEPT. 27, 2022

A-01

PLAN #

D07-12-21-0024