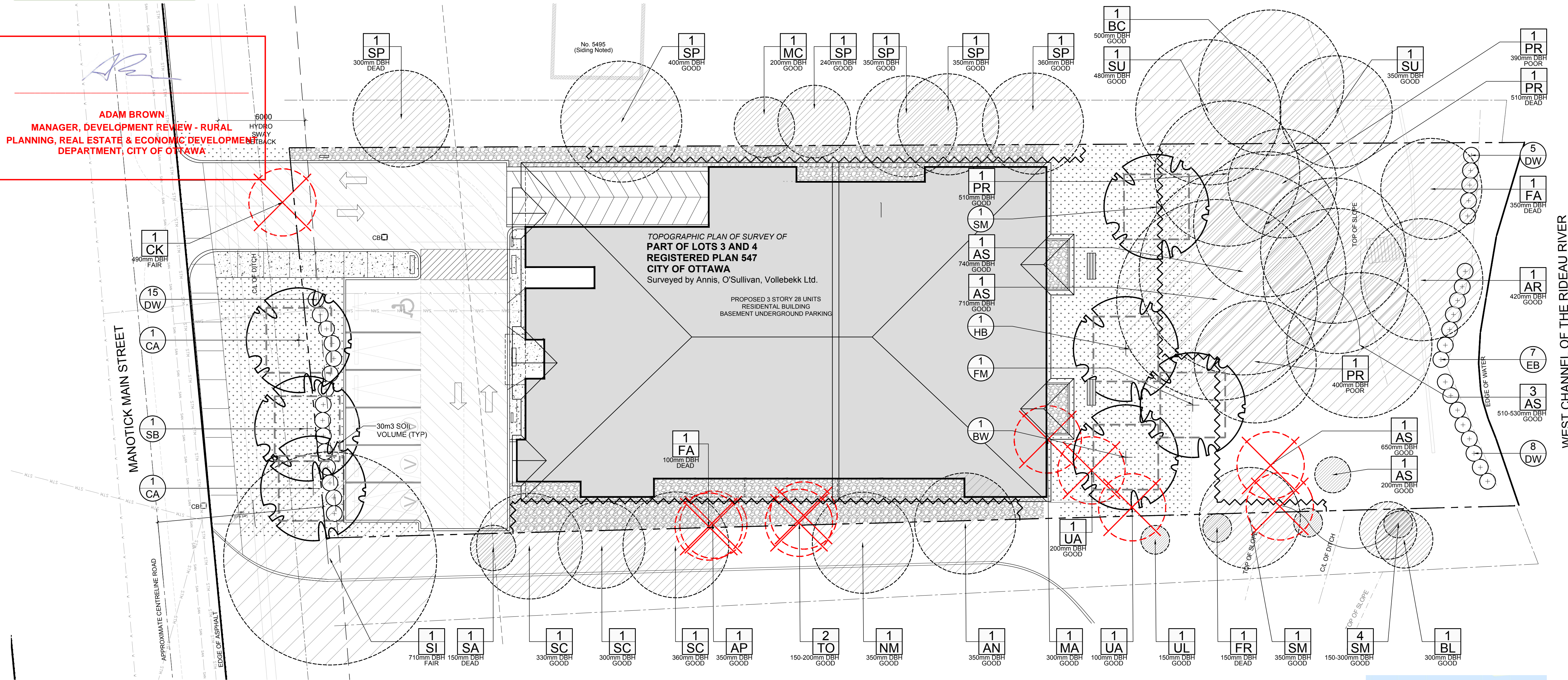
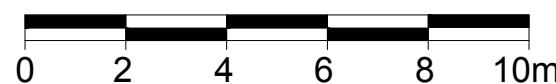


ADAM BROWN
MANAGER, DEVELOPMENT REVIEW - RURAL
PLANNING, REAL ESTATE & ECONOMIC DEVELOPMENT
DEPARTMENT, CITY OF OTTAWA



1
L.1
TREE CONSERVATION REPORT & LANDSCAPE PLAN
SCALE 1:150



EXISTING TREE LIST

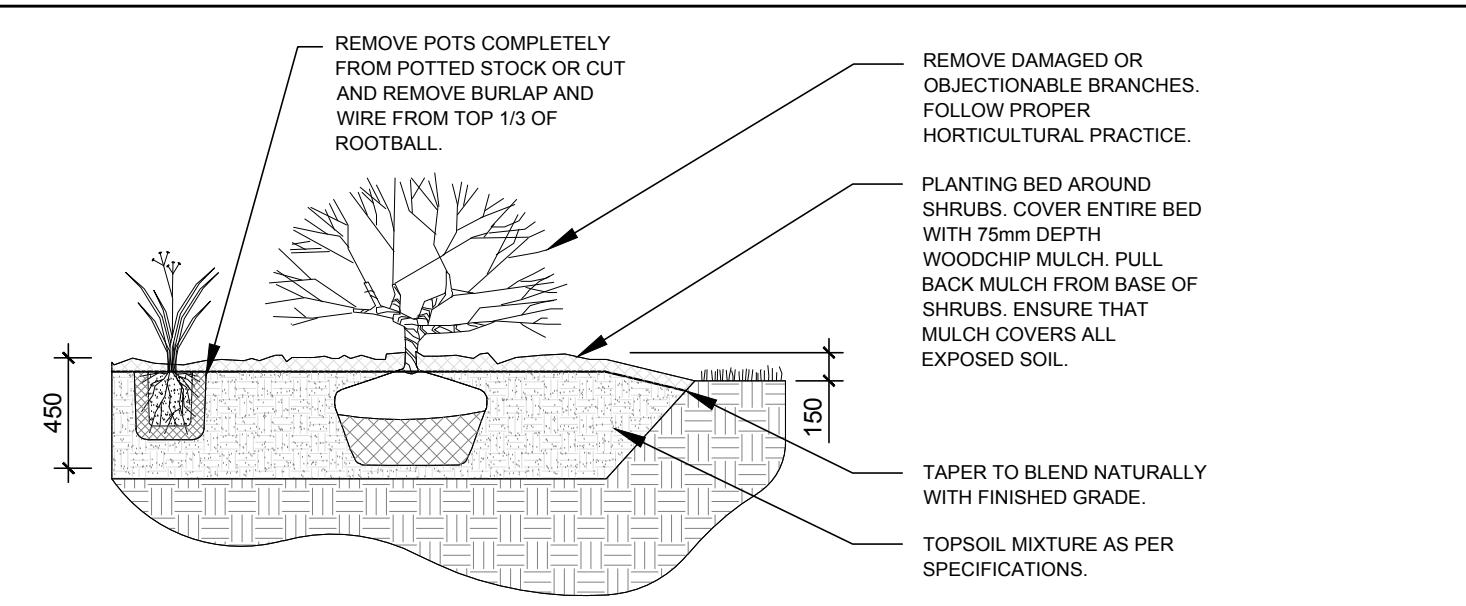
KEY	QTY.	BOTANICAL NAME	COMMON NAME	SIZE	CONDITION	REMARKS	OWNERSHIP
AN	1	<i>Acer negundo</i>	Manitoba Maple	350mm DBH	GOOD	See plan	5511 Manotick Main Street
AP	1	<i>Pinus nigra</i>	Austrian Pine	350mm DBH	GOOD	To remain	5495 & 5511 Manotick Main Street
AS	7	<i>Acer saccharum</i>	Sugar Maple	200-740mm DBH	GOOD	To remain	5497 Manotick Main Street
AR	1	<i>Acer rubrum</i>	Red Maple	420mm DBH	GOOD	To remain	5497 Manotick Main Street
BC	1	<i>Prunus serotina</i>	Black Cherry	500mm DBH	GOOD	To remain	5495 Manotick Main Street
BL	1	<i>Prunus serotina</i>	Black Cherry	300mm DBH	GOOD	To remain	5511 Manotick Main Street
CK	1	<i>Acer platanoides</i> 'Crimson King'	Crimson King Maple	490mm DBH	FAIR	To be removed	City of Ottawa
FA	2	<i>Fraxinus sp.</i>	Ash	100-350mm DBH	DEAD	See plan	5497 Manotick Main Street
FR	3	<i>Fraxinus americana</i>	White Ash	200-250mm DBH	GOOD	To remain	5511 Manotick Main Street
MA	4	<i>Malus sp.</i>	Crabapple	300mm DBH	GOOD	To be removed	5497 Manotick Main Street
MC	1	<i>Prunus maackii</i>	Manchurian Cherry	200mm DBH	GOOD	To remain	5495 Manotick Main Street
NM	1	<i>Acer platanoides</i>	Norway Maple	350mm DBH	GOOD	To remain	5517 Manotick Main Street
PR	4	<i>Prunus serotina</i>	Black Cherry	390-510mm DBH	DEAD-GOOD	To remain	5497 Manotick Main Street
SA	1	<i>Sorbus aucuparia</i>	Mountain Ash	150mm DBH	DEAD	To remain	5511 Manotick Main Street
SC	3	<i>Pinus sylvestris</i>	Scots Pine	300-360mm DBH	GOOD	To remain	5511 Manotick Main Street
SI	1	<i>Acer saccharum</i>	Silver Maple	710mm DBH	FAIR	To remain	5511 Manotick Main & City of Ottawa
SM	5	<i>Acer saccharum</i>	Sugar Maple	150-400mm DBH	GOOD	See plan	5511 Manotick Main & City of Ottawa
SP	6	<i>Pinus sylvestris</i>	Scots Pine	240-400mm DBH	DEAD-GOOD	To remain	5495 Manotick Main Street
SU	2	<i>Acer saccharum</i>	Sugar Maple	350-480mm DBH	GOOD	To remain	5495 Manotick Main Street
TO	2	<i>Thuja occidentalis</i>	White Cedar	150-200mm DBH	GOOD	To remain	5497 Manotick Main Street
UA	2	<i>Ulmus americana</i>	American Elm	100-200mm DBH	GOOD	To be removed	5497 Manotick Main Street
UL	1	<i>Ulmus americana</i>	American Elm	150mm DBH	GOOD	To remain	5511 Manotick Main & City of Ottawa

PROPOSED PLANT LIST

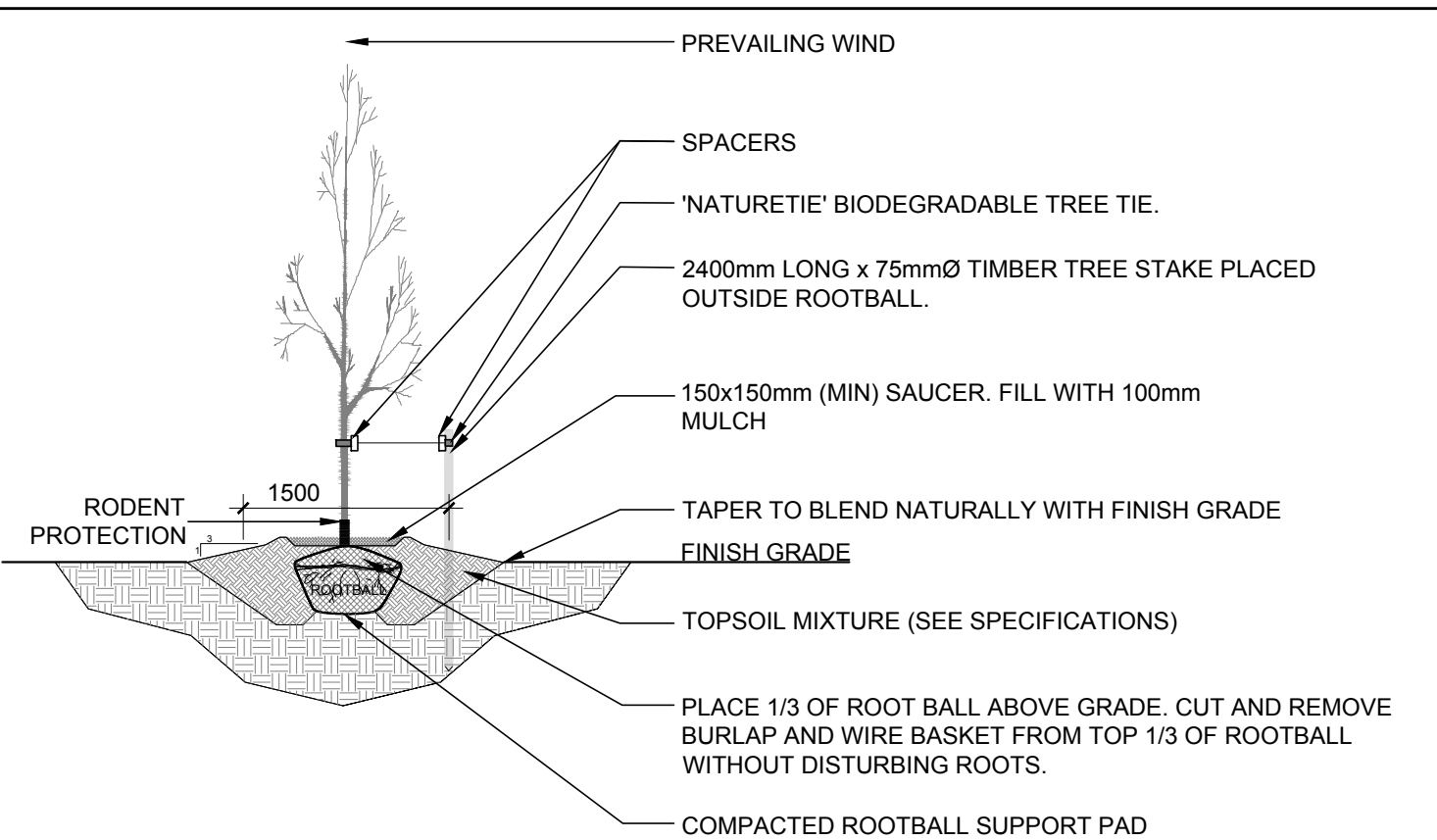
KEY	QTY.	BOTANICAL NAME	COMMON NAME	SIZE	CONDITION	REMARKS	NATIVE	OWNERSHIP
TREES								
BW	1	<i>Tilia americana</i>	Basswood	60mm cal.	B&B	Potted / stringball	YES	5497 Manotick main
CA	2	<i>Cornus alternifolia</i>	Pagoda Dogwood	30mm cal.	B&B		YES	City of Ottawa
FM	1	<i>Acer x freemanii</i>	Freeman's Maple	60mm cal.	B&B		YES	5497 Manotick main
HB	1	<i>Celtis occidentalis</i>	Hackberry	60mm cal.	B&B		YES	5497 Manotick main
SB	1	<i>Amelanchier canadensis</i>	Serviceberry	60mm cal.	B&B		YES	City of Ottawa
SM	1	<i>Acer saccharum</i>	Sugar Maple	60mm cal.	B&B		YES	5497 Manotick main
SHRUBS								
DW	28	<i>Cornus sericea</i>	Red Osier Dogwood	800mm ht.	Potted		YES	5497 Manotick main
EB	7	<i>Sambucus canadensis</i>	Elderberry	800mm ht.	Potted		YES	5497 Manotick main

GENERAL NOTES:

- It is the responsibility of the appropriate contractor or official to report any errors, omissions or discrepancies on this plan with actual site conditions to the Landscape Architect before proceeding with construction.
- The contractor is to notify all utility companies and authorities prior to any excavation and ascertain locations of underground services.
- The contractor is to reinstate all areas and items damaged as a result of construction activity.
- The contractor is to comply with all pertinent codes and by-laws.
- The contractor is to maintain a positive surface run-off throughout the entire construction period.
- The Landscape Architect is not responsible for subsurface conditions.
- The contractor is to identify all existing trees to remain on site with the Landscape Architect prior to construction.
- The contractor is to stake the proposed location of all plant material in conjunction with the Landscape Architect prior to excavation.
- Minimum distances for selected deciduous trees are as follows:
 - Sidewalks 1.5m
 - Public Streets 2.5m
 - Underground Infrastructure 2.0m
- All trees within 1m of underground utility trenches are to be excavated by hand.
- Remove all protective wrapping from tree trunks after installation.
- Staking of trees shall only be performed if necessary.
- Ensure that mulch is pulled back a min. distance of 75mm from base of tree trunk.



2
L.1
SHRUB / ORNAMENTAL GRASS PLANTING
SCALE: NTS



3
L.1
DECIDUOUS TREE PLANTING
SCALE: NTS

40 YEAR CANOPY CALCULATION:

-2,133m2 site area

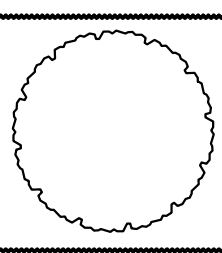
-4 Large trees proposed (154m2 ea.), 3 small trees proposed (7m2 ea.); 535m2 existing tree canopy cover

=1172m2 canopy cover =54.9% canopy cover

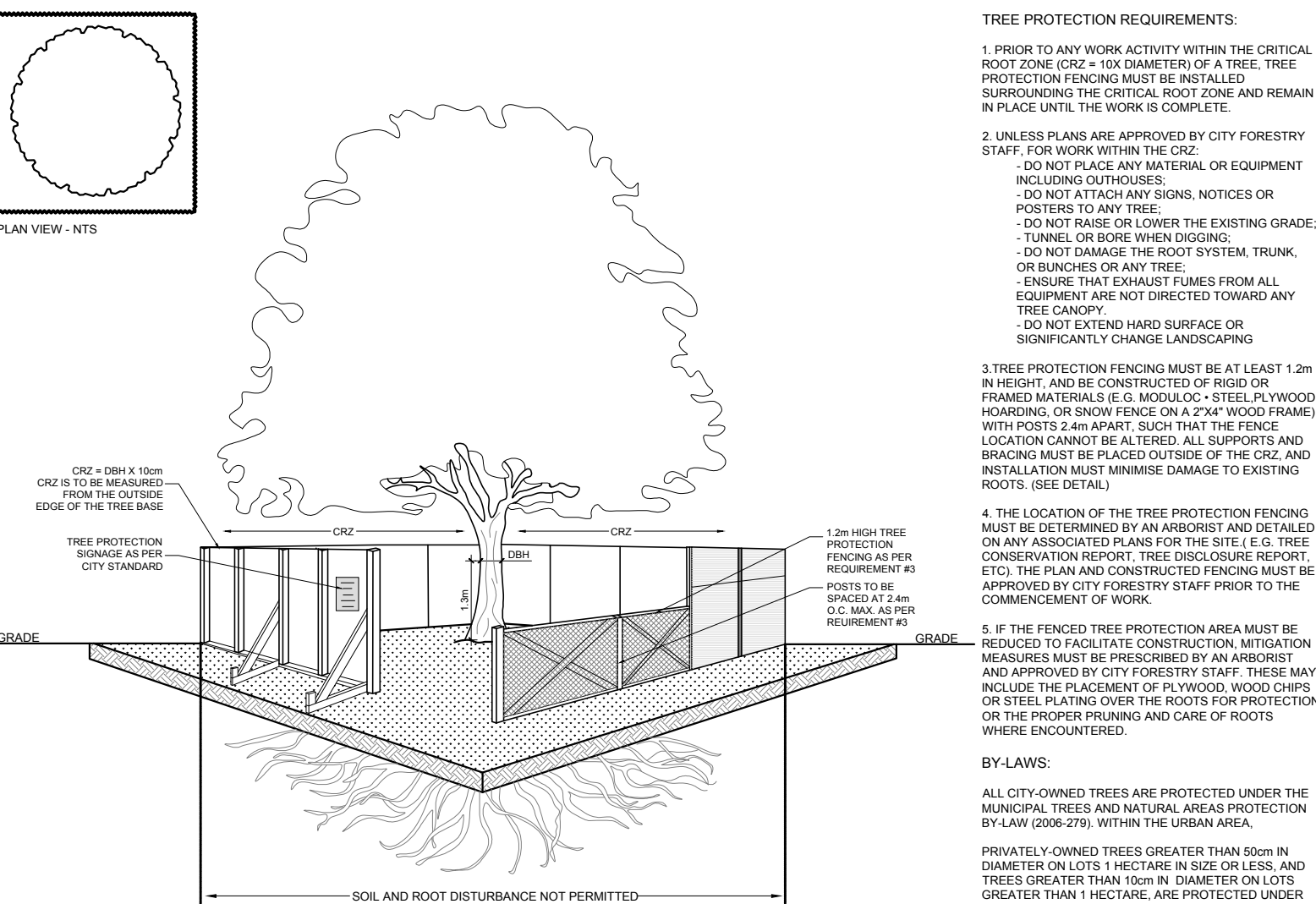
*Large trees calculated at 14m spread, small trees at 3m spread



KEY PLAN N.T.S.



PLAN VIEW - NTS



4
L.1
TREE PROTECTION FENCE
SCALE: NTS

CLIENT:
12213559 CANADA
BUILDING COMMUNITIES
996-B St. Augustin Rd, Emburn ON K0A 1W0
613-443-3575

CONSULTANTS
ARCHITECTS
BRYDEN GIBSON
ARCHITECTS INCORPORATED
1066 Somerset Street West, Suite 200, Ottawa Ontario, K1Y 4T3
Telephone: 613.724.9914 E-mail: architecture@brydengibson.ca

SURVEYORS:
ANNIS, O'SULLIVAN, VOLLEBEKK LTD.
14 Concourse Way, Suite 300
Nepean, Ont. K2E 7S8
Phone: (613) 727-3857 / Fax: (613) 727-1079
Email: info@anniso.com

CIVIL ENGINEERS:
TATHAM
ENGINEERING

- LEGEND
- EXISTING TREE TO REMAIN
 - EXTENT OF CRITICAL ROOT ZONE
 - EXISTING TREE TO BE REMOVED
 - PROPOSED CONCRETE WALKWAY
 - 30m3 SOIL VOLUME
 - PROPOSED DECIDUOUS TREE
 - PROPOSED SHRUBS / ORNAMENTAL GRASSES
 - PROPOSED SOD
 - PROPOSED RIVERSTONE MULCH
 - PROPOSED TREE PROTECTION FENCE
 - PROPOSED BENCH
 - PROPERTY LINE

17	REVISED PER CITY COMMENTS	11/12/2024	ML	JL
16	REVISED PER NEW SITE PLAN	10/08/2024	ML	JL
15	REVISED PER NEW SITE PLAN	08/22/2024	ML	JL
14	REVISED PER NEW CIVIL DRAWING	05/09/2024	ML	JL
13	REVISED PER NEW SITE PLAN	05/08/2024	ML	JL
12	REVISED PER CITY COMMENTS	11/28/2023	ML	JL
11	REVISED PER NEW SITE PLAN	07/19/2023	ML	JL
10	REVISED PER NEW SITE PLAN	04/27/2023	ML	JL
9	REVISED PER CITY COMMENTS	04/25/2023	ML	JL
8	REVISED PER UDRP COMMENTS	03/07/2023	ML	JL
7	PAVERS CHANGED TO CONCRETE	11/22/2022	ML	JL
6	REVISED PER NEW SITE PLAN	11/16/2022	ML	JL
5	REVISED PER NEW SITE PLAN	10/07/2022	ML	JL
4	ISSUED FOR DISCUSSION AND REVIEW	08/11/2022	ML	JL
3	REVISED PER NEW SITE PLAN	10/14/2021	ML	JL
2	ISSUED FOR DISCUSSION AND REVIEW	09/14/2021	ML	JL
1	ISSUED FOR SITE PLAN CONTROL	03/10/2021	ML	JL
No.	Issue	Date	ML	DR CK

JAMES B. LENNOX & ASSOCIATES INC.
LANDSCAPE ARCHITECTS
3332 CARLING AVE. OTTAWA, ONTARIO K2H 5A8
Tel. (613) 722-5168 Fax. (1-866) 343-3942

PROJECT
PROPOSED RESIDENTIAL BUILDING
5497 MANOTICK MAIN STREET, MANOTICK ON

DRAWING
TREE CONSERVATION REPORT & LANDSCAPE PLAN

STAMP
ASSOCIATION OF LANDSCAPE ARCHITECTS
MEMBER
SCALE
AS SHOWN
START DATE
NOVEMBER 2020
PROJECT NO.
21MS2107

PROJECT NORTH
DRAWING NO.
L.1
PLOT SIZE ARCH-D