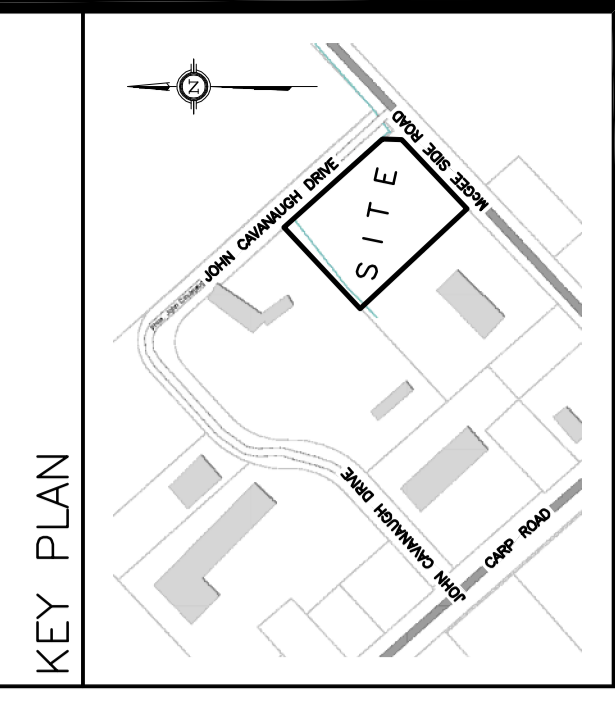


OWNER:
STOKED INDUSTRIES INC
14 KNOLL TERRACE,
NEPEAN ON
K2J 2K6

DRAWING LEGEND

INV	INVERT OF PIPE
SAN	SANITARY SEWER
WL	WATER LINE
DS	EAVE TROUGH DOWNSPOUT
± 67.89	EXISTING GRADE ELEVATION
+ 67.89	PROPOSED GRADE ELEVATION
± 2%	EXISTING SLOPE OF GRADE
± 2%	PROPOSED SLOPE OF GRADE
T.O.S	TOP OF SLOPE
B.O.S	BOTTOM OF SLOPE
-----	CENTRELINE OF SWALE
-----	SILT BARRIER FENCE
-----	PROPERTY LINE
DC	150mm CURB/DEPRESSED CURB
	LIGHT-DUTY PAVEMENT
	HEAVY-DUTY PAVEMENT
	CONCRETE
	LANDSCAPE
C.R.Z	CRITICAL ROOT ZONE
F.FL	FIRST FLOOR ELEVATION
USF	UNDERSIDE OF FOOTING
⇨	EMERGENCY OVERLAND FLOW



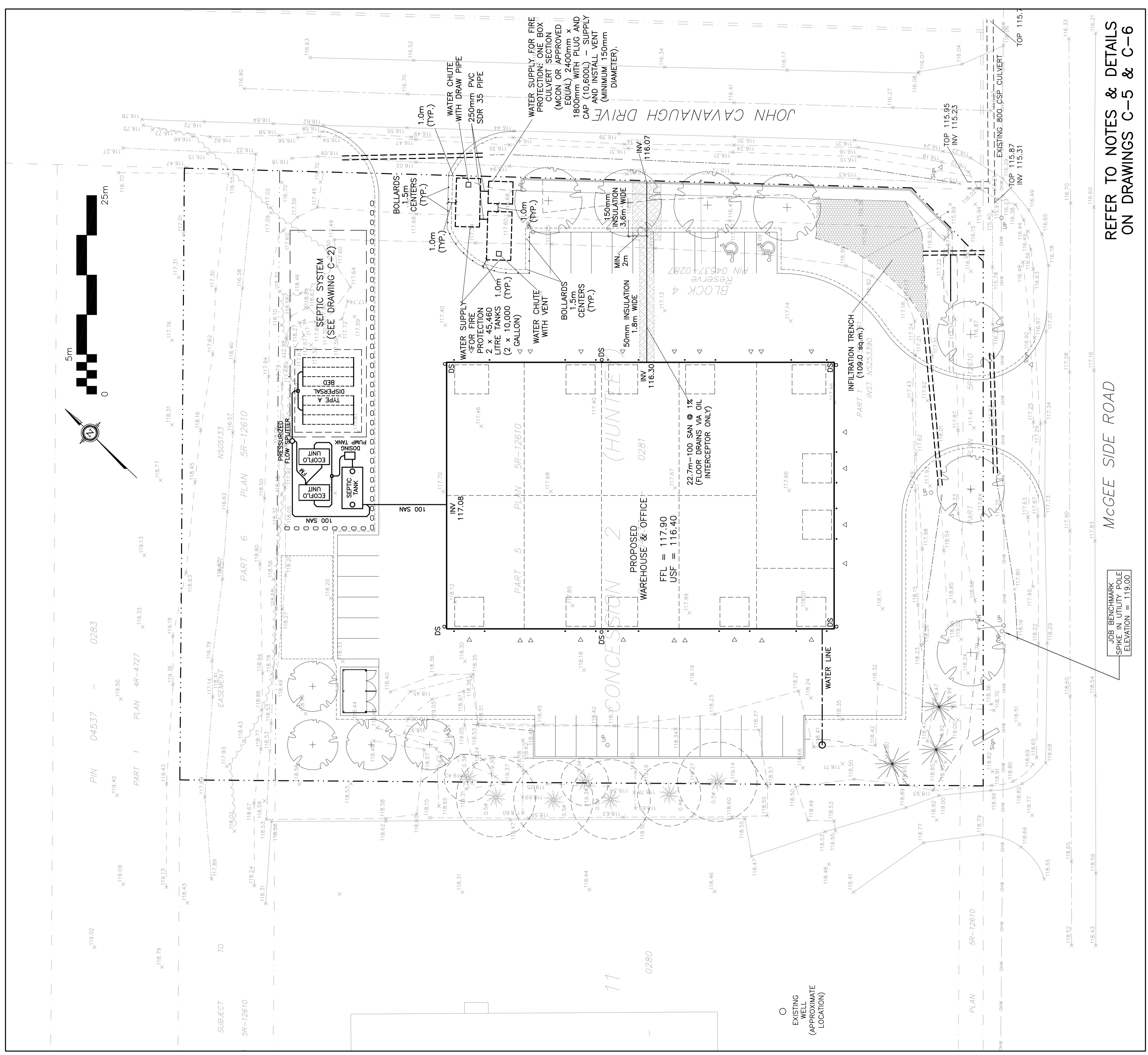
11	OCT 15-24	RE-ISSUED FOR APPROVAL
10	AUG 2-24	ISSUED TO OPS FOR APPROVAL OF FIRE TANKS LOCATION
9	DEC 21-23	RE-ISSUED FOR APPROVAL
8	AUG 10-23	RE-ISSUED FOR APPROVAL
7	JUN 29-23	RE-ISSUED FOR APPROVAL
6	JUN 23-23	RE-ISSUED FOR COORDINATION
5	JUN 8-23	ISSUED FOR COORDINATION
4	APR 19-23	ISSUED FOR CLIENT REVIEW
3	JUL 26-21	RE-ISSUED FOR APPROVAL
2	JUN 14-21	RE-ISSUED FOR APPROVAL
1	MAR 12-21	ISSUED FOR APPROVAL
No.	DATE	REVISION

D. B. GRAY ENGINEERING INC.
Professional Engineer - Consulting of Plumbing, Sewer & Stormwater, Electrical
 700 Long Point Circle
 Ottawa, Ontario
 613-425-8044
 dgray@dbgrayengineering.com

OFFICE & WAREHOUSE
 2167 MCGEE SIDE ROAD
 OTTAWA, ONTARIO

SITE SERVICING PLAN

Engineer's Seal
 D.B. GRAY
 17016502
 OCT 15-24
 DRAWING NO. C-1 of 7
 NOT VALID UNLESS SIGNED & DATED



REFER TO NOTES & DETAILS
ON DRAWINGS C-5 & C-6

MCGEE SIDE ROAD

JOB BENCHMARK
SPIKE IN UTILITY POLE
ELEVATION = 119.00