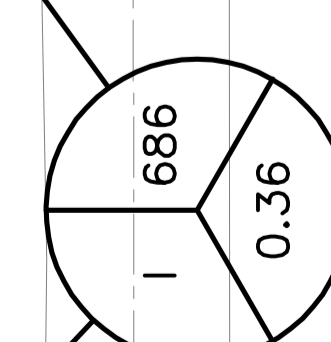
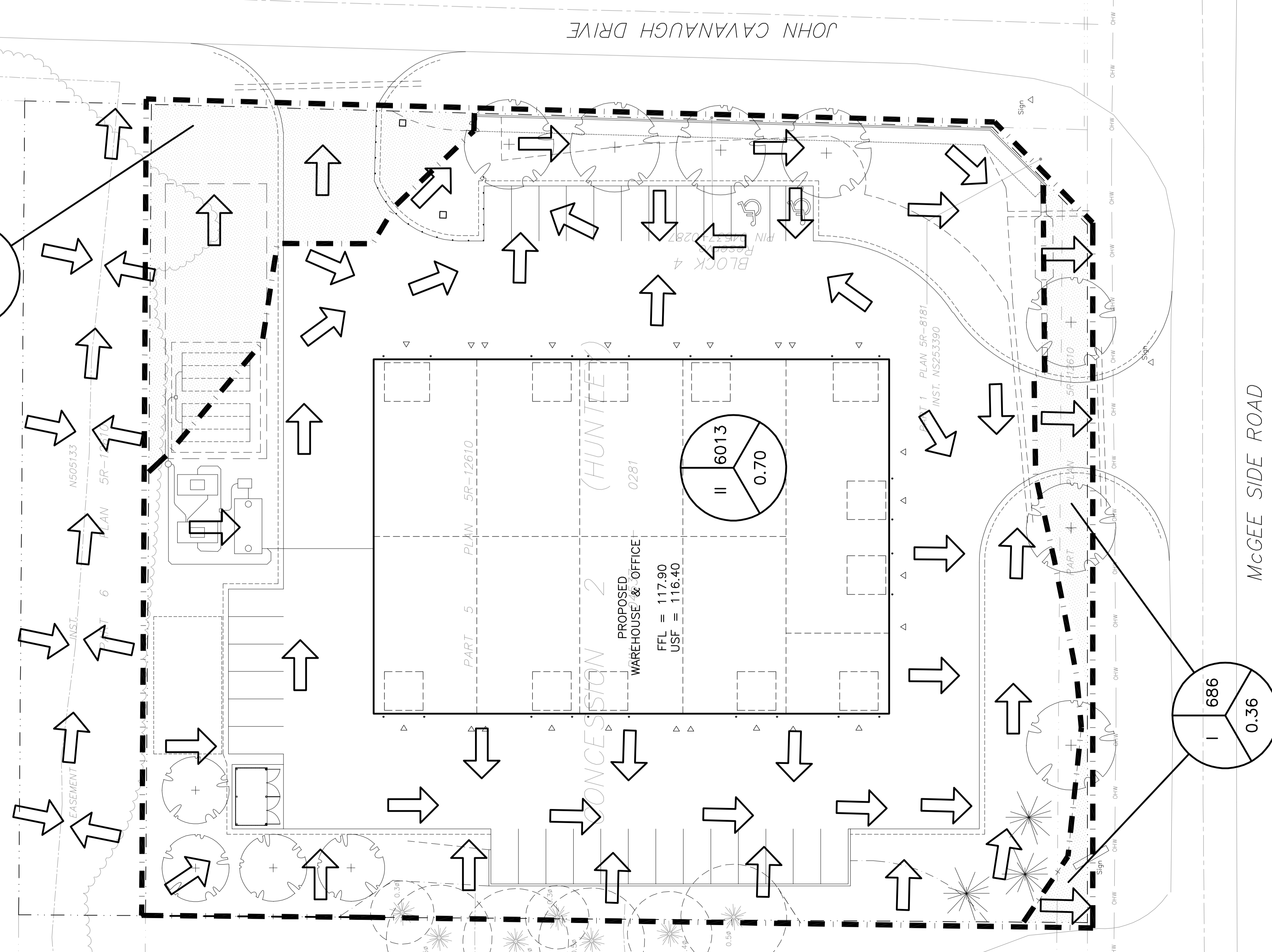
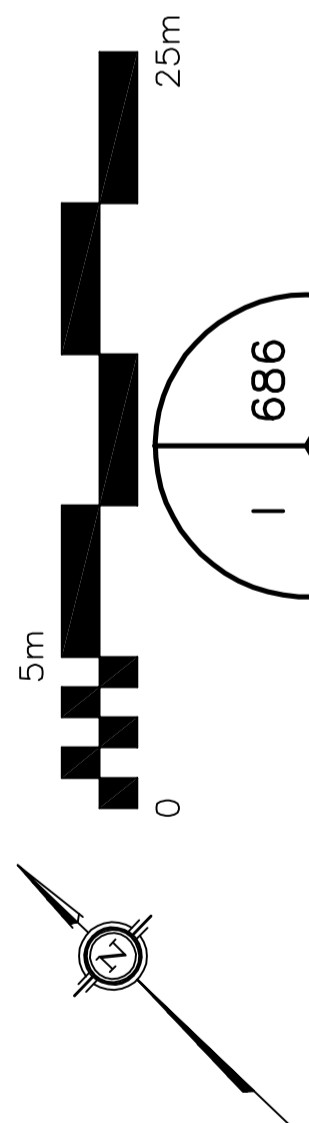
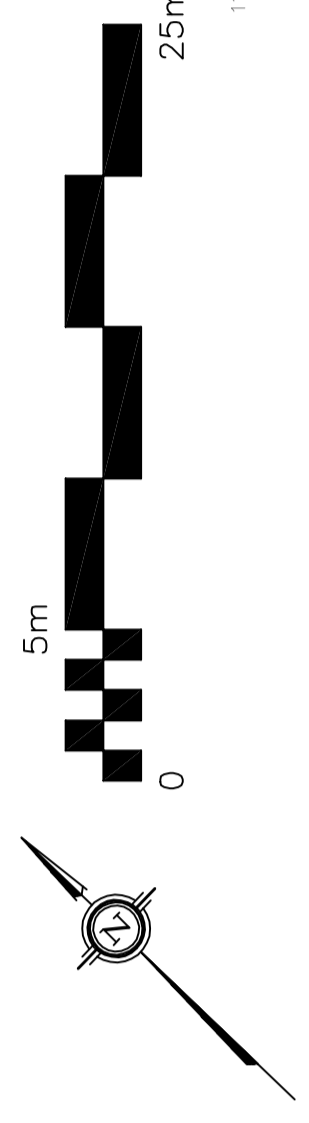
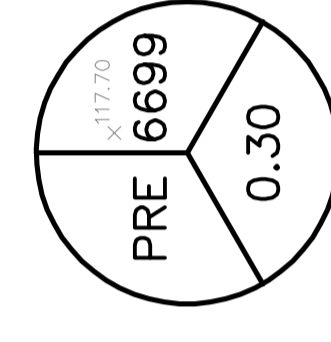
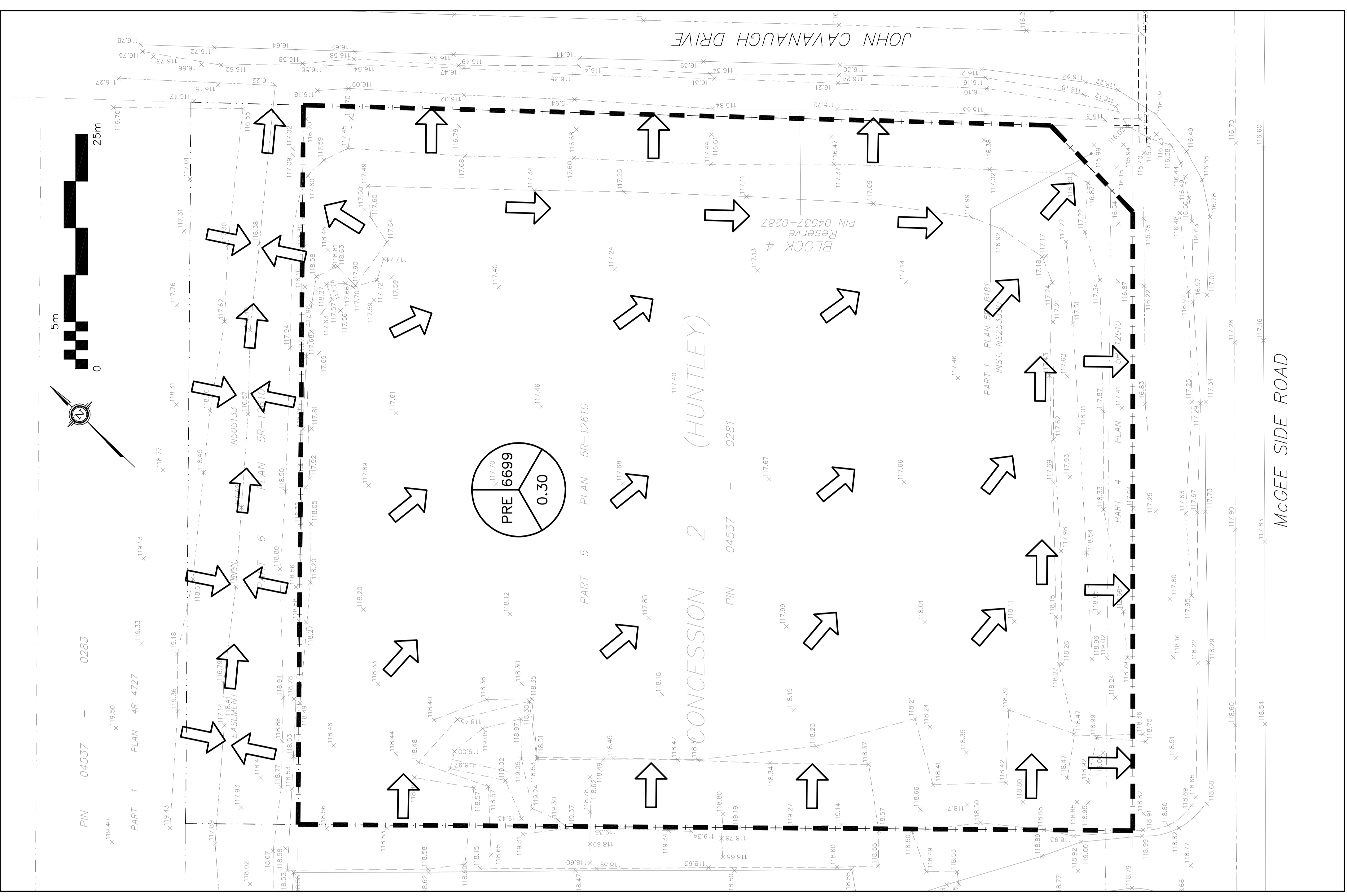


OWNER:
STOKED INDUSTRIES INC
14 KNOLL TERRACE,
NEPEAN ON N5J 2K6

PART 1 PLAN 4R-4727



McGEE SIDE ROAD

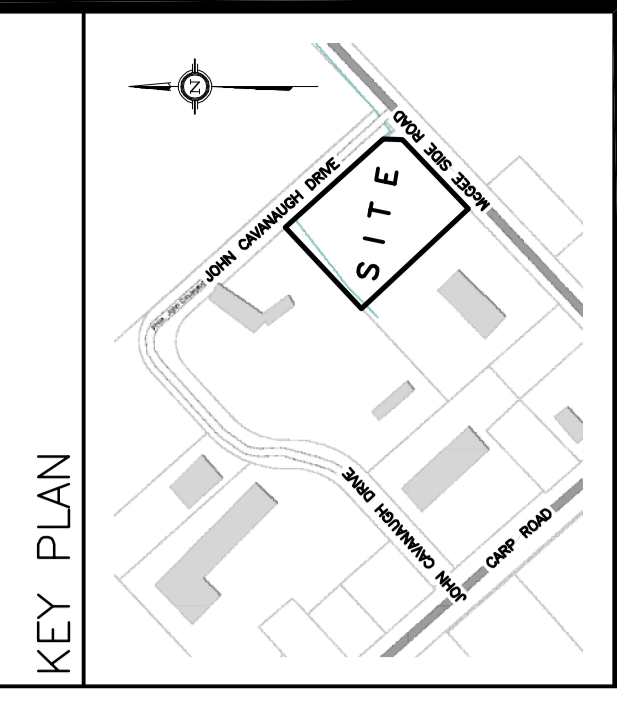


LEGEND

DRAINAGE AREA (sq.m)

5 YEAR RUNOFF COEFFICIENT

↑ DRAINAGE PATTERN



No.	DATE	REVISION
1	MAR 12-21	ISSUED FOR APPROVAL
2	JUN 14-21	RE-ISSUED FOR APPROVAL
3	APR 19-23	ISSUED FOR CLIENT REVIEW
4	JUN 23-23	RE-ISSUED FOR APPROVAL
5	JUN 29-23	RE-ISSUED FOR APPROVAL
6	AUG 10-23	RE-ISSUED FOR APPROVAL
7	DEC 21-23	RE-ISSUED FOR APPROVAL
8	OCT 15-24	RE-ISSUED FOR APPROVAL

D. B. GRAY ENGINEERING INC.
 Professional Engineer, Consulting & Design
 700 Long Point Circle
 Ottawa, Ontario
 613-425-8044
 dgray@dbgrayengineering.com

OFFICE & WAREHOUSE
 2167 MCGEE SIDE ROAD
 OTTAWA, ONTARIO

PRE-DEVELOPMENT & POST DEVELOPMENT DRAINAGE PLAN

Engineer's Seal

 Drawn: D.E.C.
 Hor. Scale: 1:250
 Date: APR 19-23
 Job No.: 23024
 Drawing No.: C-7 of 7