

\*DENOTES NUMEROUS

**GENERAL NOTES:**

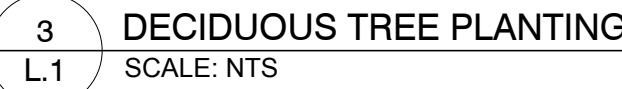
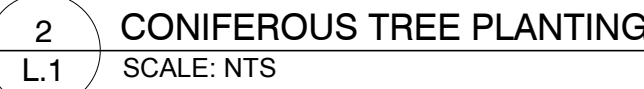
1. It is the responsibility of the appropriate contractor or official to report any errors, omissions or discrepancies on this plan with actual site conditions to the Landscape Architect before proceeding with construction.
2. The contractor is to notify all utility companies and authorities prior to any excavation and ascertain locations of underground services.
3. The contractor is to reinstate all areas and items damaged as a result of construction activity.
4. The contractor is to comply with all pertinent codes and by-laws.
5. The contractor is to maintain a positive surface run-off throughout the entire construction period.
6. The Landscape Architect is not responsible for subsurface conditions.
7. The contractor is to identify all existing trees to remain on site with the Landscape Architect prior to construction.
8. The contractor is to stake the proposed location of all plant material in conjunction with the Landscape Architect prior to excavation.
9. Minimum distances for selected deciduous trees are as follows:
  - Building Foundations 7.5m
  - Sidewalks 1.5m
  - Public Streets 2.5m
  - Underground Infrastructure 2.0m
10. All trees within 1m of underground utility trenches are to be excavated by hand.
11. Remove all protective wrapping from tree trunks after installation.
12. Staking of trees shall only be performed if necessary.
13. Ensure that mulch is pulled back a min. distance of 75mm from base of tree trunk.

**-6,701 m2 site area**

-6 large deciduous trees proposed (154m2 ea),  
2 medium deciduous trees proposed (79m2 ea)  
3 large coniferous trees proposed (79m2 ea),  
and 3 small deciduous trees proposed (7m2 ea)

**=1340m2 canopy cover =19.9% canopy cover**

\*Large deciduous tree calculated at 14m spread, medium deciduous tree calculated at 10m spread, large coniferous tree calculated at 10m spread and small deciduous tree calculated at 3m spread.

PLOT SIZE ARCH-D