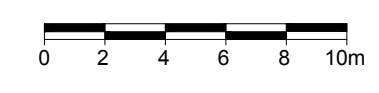


1 TREE CONSERVATION REPORT & LANDSCAPE PLAN
L.1 SCALE 1:250



EXISTING TREE LIST

KEY	QTY	BOTANICAL NAME	COMMON NAME	SIZE	CONDITION	REMARKS
AN	*	Acer negundo	Manitoba Maple	100-200mm DBH	Poor-Good	See plan
AS	*	Acer saccharinum	Silver Maple	100-250mm DBH	Good	To remain
PD	*	Populus deltoides	Eastern Cottonwood	100-200mm DBH	Good	To remain
RT	*	Rhus typhina	Staghorn Sumac	100-150mm DBH	Dead-poor	See plan
PR	*	Prunus sp.	Cherry	100-150mm DBH	Good	To remain
PT	*	Populus tremuloides	Trembling Aspen	100-150mm DBH	Good	To remain
PG	4	Picea glauca	White Spruce	300-500mm DBH	Good	To remain
PA	3	Picea abies	Norway Spruce	400-500mm DBH	Poor-Good	To remain

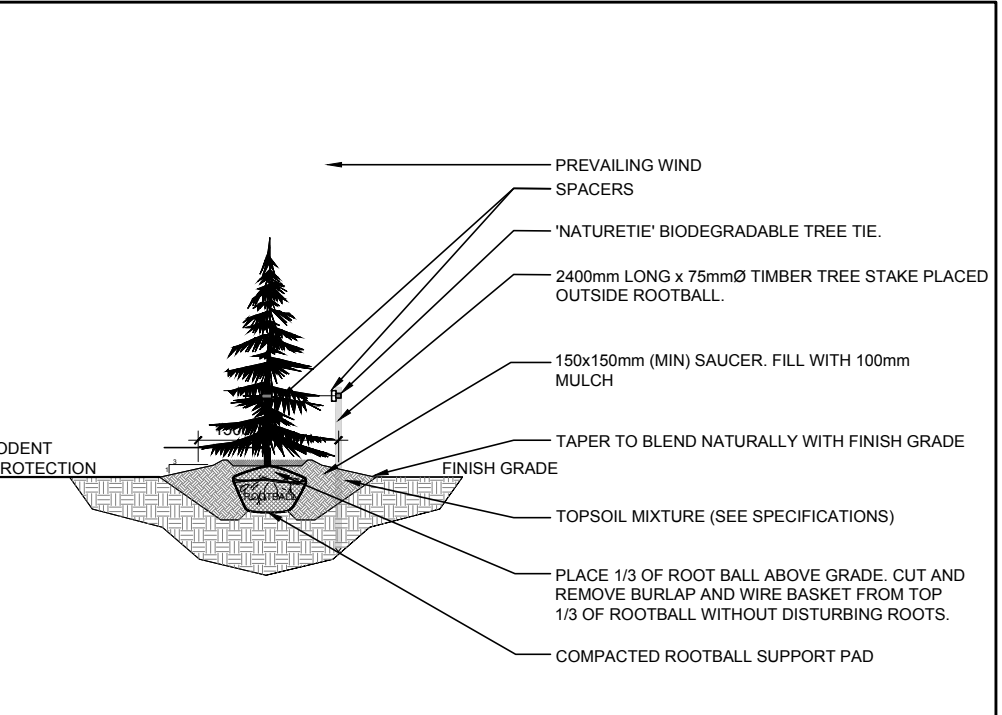
*DENOTES NUMEROUS

PROPOSED PLANT LIST

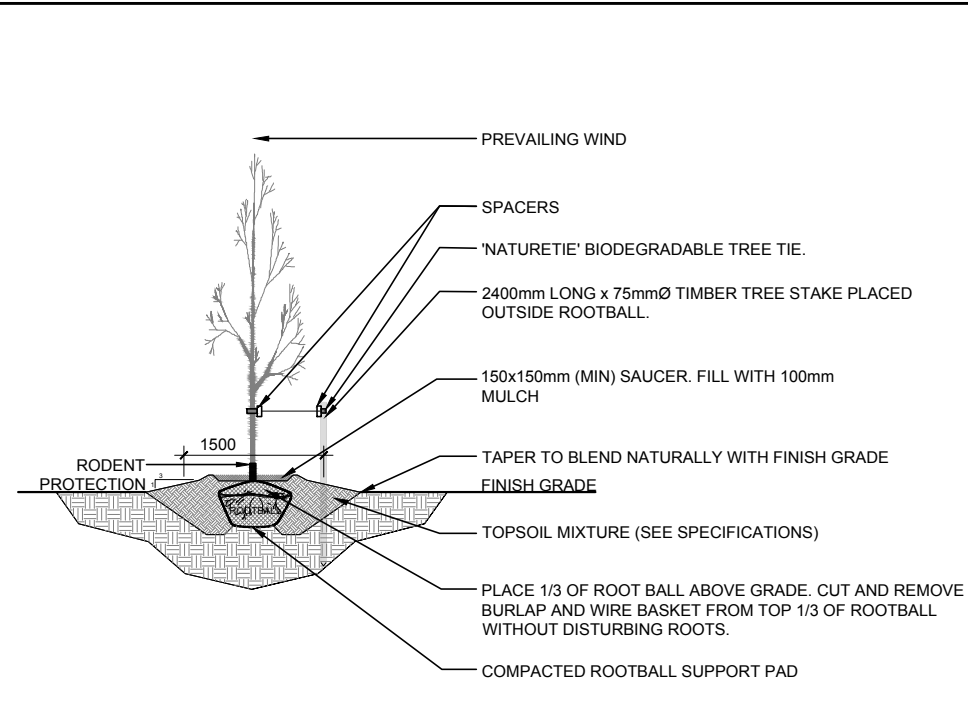
KEY	QTY	BOTANICAL NAME	COMMON NAME	SIZE	CONDITION	REMARKS
BH	2	Carya cordiformis	Bitternut Hickory	50mm ø	B&B	
RM	2	Acer rubrum	Freeman's Maple	50mm ø	B&B	
RO	2	Quercus rubra	Red Oak	50mm ø	B&B	
SM	2	Acer saccharum	Sugar Maple	50mm ø	B&B	
SB	3	Amelanchier canadensis	Serviceberry	50mm ø	B&B	Single leader
WS	3	Picea glauca	White Spruce	1.8m ht.	B&B	

GENERAL NOTES:

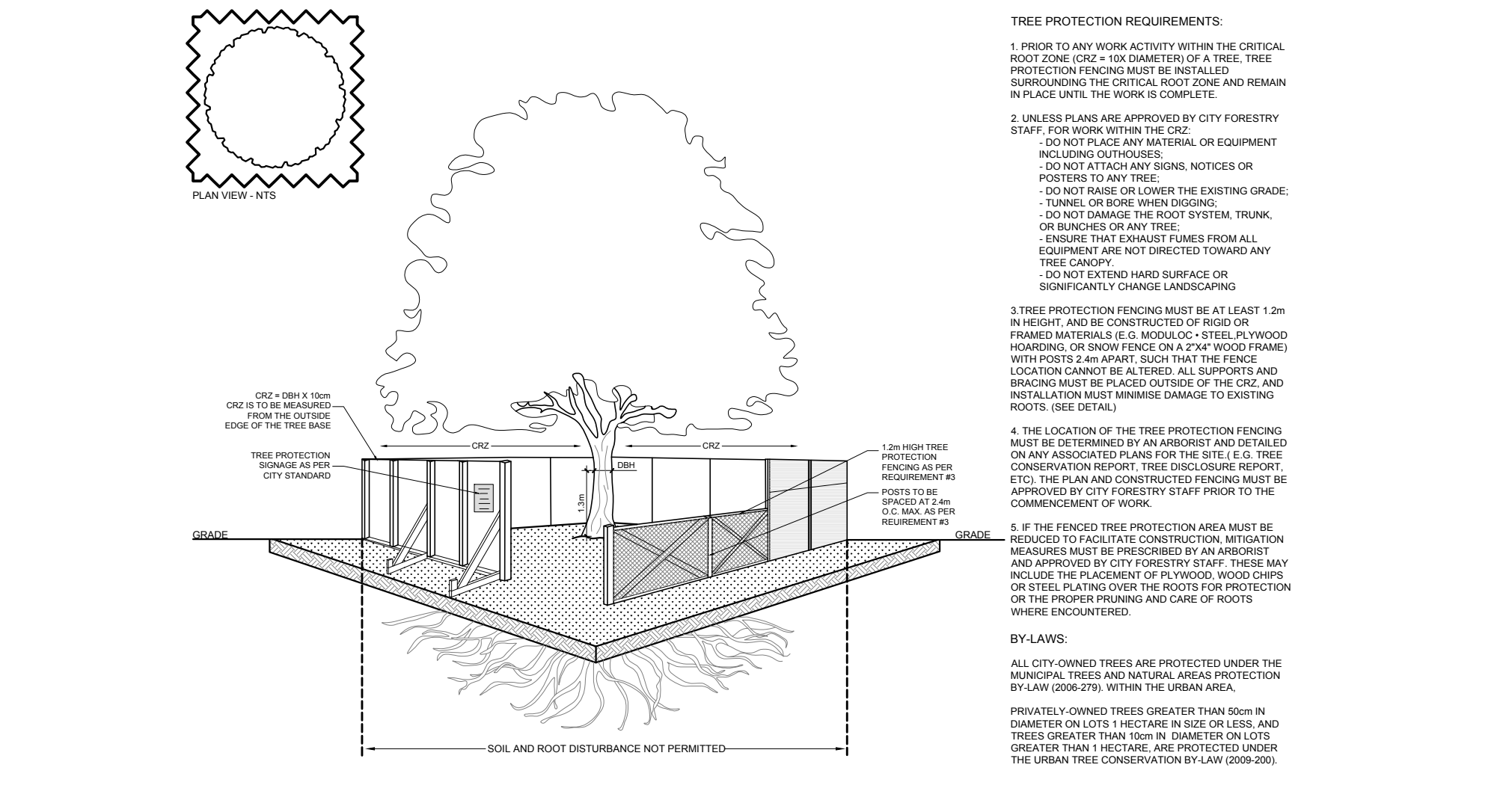
- It is the responsibility of the appropriate contractor or official to report any errors, omissions or discrepancies on this plan with actual site conditions to the Landscape Architect before proceeding with construction.
- The contractor is to notify all utility companies and authorities prior to any excavation and ascertain locations of underground services.
- The contractor is to reinstate all areas and items damaged as a result of construction activity.
- The contractor is to comply with all pertinent codes and by-laws.
- The contractor is to maintain a positive surface run-off throughout the entire construction period.
- The Landscape Architect is not responsible for subsurface conditions.
- The contractor is to identify all existing trees to remain on site with the Landscape Architect prior to construction.
- The contractor is to stake the proposed location of all plant material in conjunction with the Landscape Architect prior to excavation.
- Minimum distances for selected deciduous trees are as follows:
 - Building Foundations 7.5m
 - Sidewalks 1.5m
 - Public Streets 2.5m
 - Underground Infrastructure 2.0m
- All trees within 1m of underground utility trenches are to be excavated by hand.
- Remove all protective wrapping from tree trunks after installation.
- Staking of trees shall only be performed if necessary.
- Ensure that mulch is pulled back a min. distance of 75mm from base of tree trunk.



2 CONIFEROUS TREE PLANTING
L.1 SCALE: NTS



3 DECIDUOUS TREE PLANTING
L.1 SCALE: NTS



4 TREE PROTECTION FENCE
L.1 SCALE: NTS

CLIENT: **Stoked Industries INC**
14 Knoll Terrace, Nepean ON K2J 2K6

CONSULTANTS
ARCHITECTS: **ES ARCHITECT**
11 Hogan Drive | Arrnprior | ON | K1Y 0H8
613.293.3760

CIVIL ENGINEERS: **D.B. GRAY ENGINEERING INC.**
700 LONG POINT CIRCLE,
OTTAWA ON K1Y 4E9
Tel: (613) 425-8044

LEGEND

- EXISTING TREE TO REMAIN
- GROUP OF EXISTING TREES TO REMAIN
- GROUP OF EXISTING TREES TO BE REMOVED
- PROPOSED DECIDUOUS TREE
- PROPOSED CONIFEROUS TREE
- PROPOSED SEEDED GRASS AREA
- EXISTING LANDSCAPE AREA TO REMAIN UNDISTURBED
- PROPOSED TREE PROTECTION FENCE
- PROPOSED COMPOSTED PINE MULCH

No.	Issue	Date	DR	CK
9	DIMENSIONS REVISED	09/26/2023	ML	JL
8	REVISED PER CITY COMMENTS	09/19/2023	ML	JL
7	REVISED PER CITY COMMENTS	08/11/2023	ML	JL
6	ISSUED FOR SITE PLAN CONTROL	06/03/2023	ML	JL
5	SCALE CHANGED TO 1:250	07/19/2021	ML	JL
4	REVISED PER CITY COMMENTS	06/14/2021	ML	JL
3	ISSUED FOR COORDINATION	05/14/2021	ML	JL
2	ISSUED FOR DISCUSSION AND REVIEW	03/29/2021	ML	JL
1	ISSUED FOR DISCUSSION AND REVIEW	03/19/2021	ML	JL

JAMES B. LENNOX & ASSOCIATES INC.
LANDSCAPE ARCHITECTS
3312 CARLING AVE. OTTAWA, ONTARIO K2H 5A8
Tel. (613) 722-5168 Fax. (866) 343-3942

PROJECT
STOKED INDUSTRIES OFFICE & WAREHOUSE
2167 McGEE SIDE ROAD, OTTAWA ON

DRAWING
TREE CONSERVATION REPORT & LANDSCAPE PLAN

STAMP:

SCALE: AS SHOWN

START DATE: MARCH 2021

PROJECT NO.: 21MIS2167

PROJECT NORTH:

DRAWING NO.: **L.1**

PLOT SIZE ARCH-D