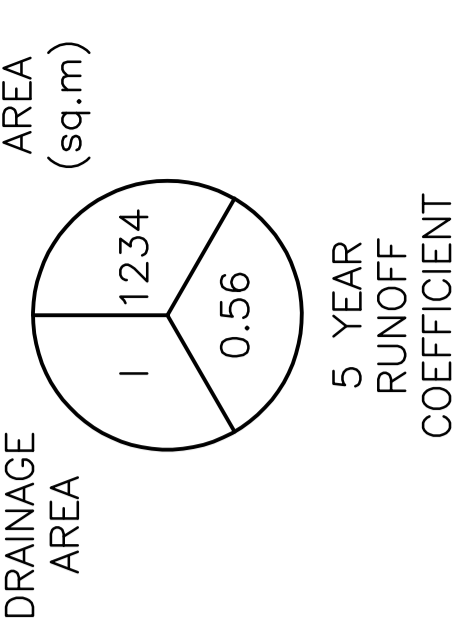
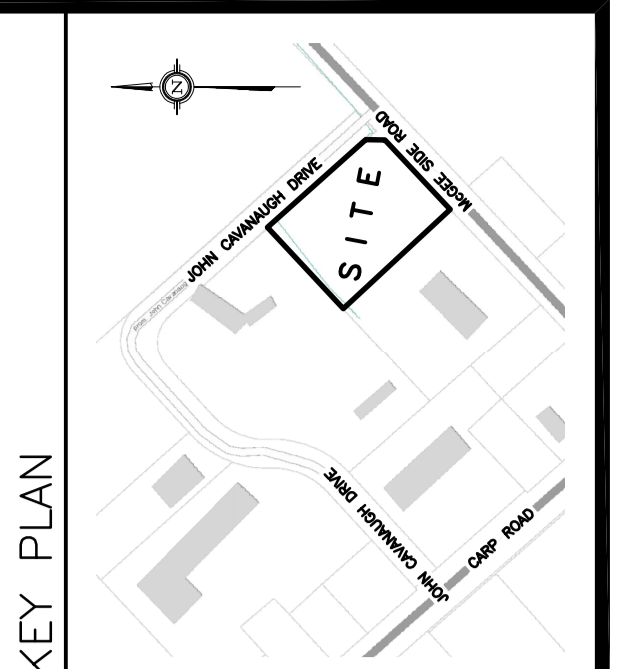


CLT ROOFING LTD OFFICE & WAREHOUSE 2167 MCGEE SIDE ROAD OTTAWA, ONTARIO

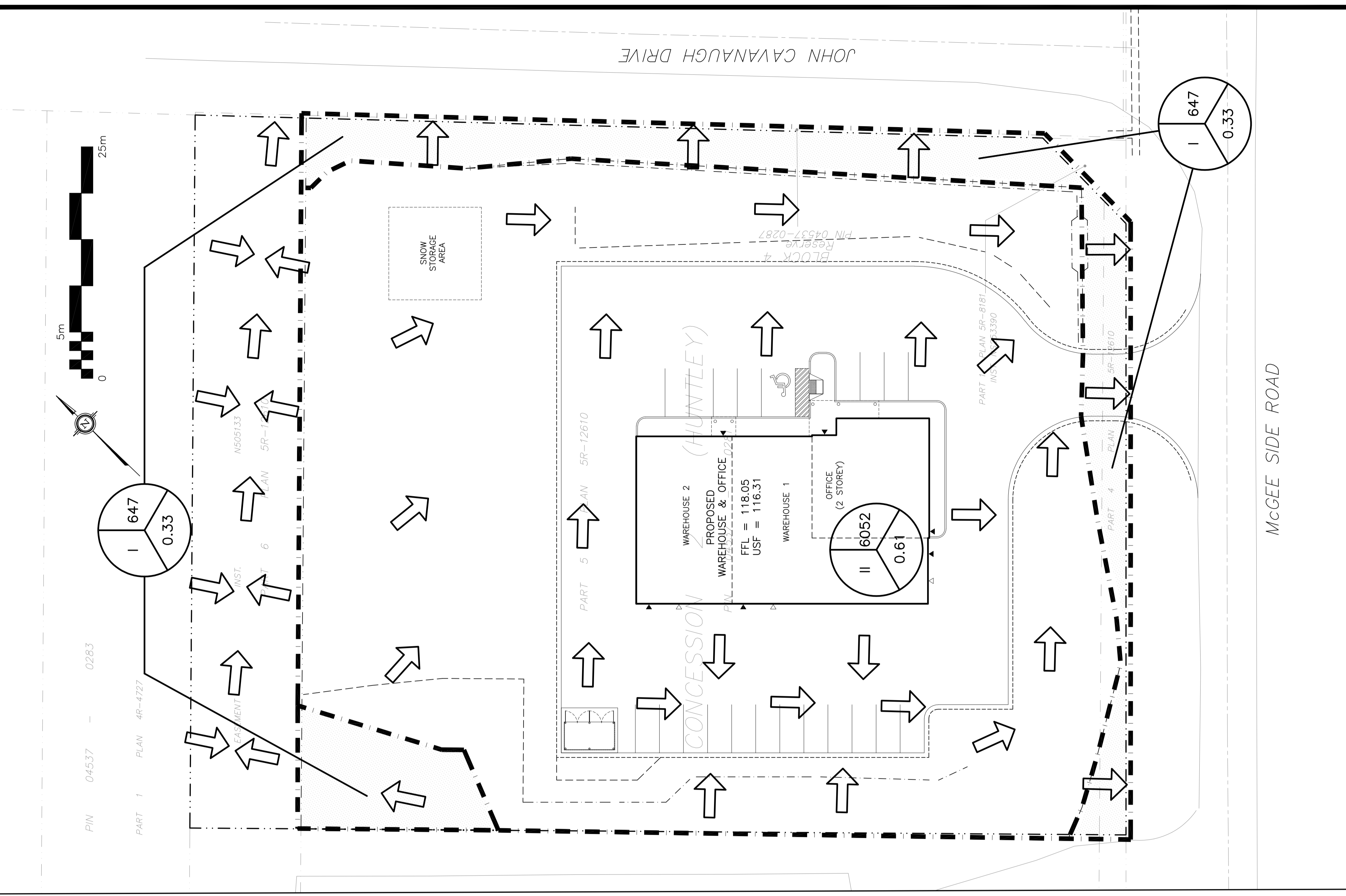
CLT ROOFING LTD OFFICE & WAREHOUSE 2167 MCGEE SIDE ROAD OTTAWA, ONTARIO

D. B. GRAY ENGINEERING INC. 700 Long Point Circle Ottawa, Ontario 613-425-8044 dgray@dbgrayengineering.com

Revision table with columns: No., DATE, REVISION, and a list of revisions from 1 to 4.



DRAINAGE PATTERN with an arrow symbol.



- 5.5 REMOVE OBSTRUCTIONS, ICE AND SNOW... 5.6 CUT PAVEMENT AND/OR SIDEWALK... 5.7 EXCAVATIONS... 5.8 EXCAVATIONS... 5.9 EXCAVATIONS... 5.10 PIPES... 5.11 MAINTAIN RECORD... 5.12 CONCRETE CURBS... 5.13 WEATHER RESULT OF POOR WORKMANSHIP... 6. PAVEMENT 6.1 PAVEMENT STRUCTURE... 6.2 PAVEMENT SUB-GRADE... 6.3 RECYCLED GRANULAR MATERIALS... 6.4 FINISH SURFACE SMOOTH... 6.5 APPLY ASPHALTIC COURSE... 6.6 REPLACE PAVEMENT... 6.7 REPLACE PAVEMENT... 6.8 REPLACE PAVEMENT... 6.9 REPLACE PAVEMENT... 6.10 FINISH SURFACE SMOOTH... 6.11 FINISH SURFACE SMOOTH... 6.12 FINISH SURFACE SMOOTH... 6.13 FINISH SURFACE SMOOTH... 6.14 FINISH SURFACE SMOOTH... 6.15 FINISH SURFACE SMOOTH... 6.16 FINISH SURFACE SMOOTH... 6.17 FINISH SURFACE SMOOTH... 6.18 FINISH SURFACE SMOOTH...

- 1. GENERAL 1.1 USE BAR SCALE TO CONFIRM ACTUAL PLOT SCALE... 1.2 EXISTING ELEVATIONS AND LOCATIONS... 1.3 EXISTING ELEVATIONS AND LOCATIONS... 1.4 EXISTING ELEVATIONS AND LOCATIONS... 1.5 EXISTING ELEVATIONS AND LOCATIONS... 1.6 EXISTING ELEVATIONS AND LOCATIONS... 1.7 EXISTING ELEVATIONS AND LOCATIONS... 1.8 EXISTING ELEVATIONS AND LOCATIONS... 1.9 EXISTING ELEVATIONS AND LOCATIONS... 2. EROSION AND SEDIMENT CONTROL PLAN 2.1 THE EROSION AND SEDIMENT CONTROL PLAN... 2.2 THE EROSION AND SEDIMENT CONTROL PLAN... 2.3 THE EROSION AND SEDIMENT CONTROL PLAN... 2.4 THE EROSION AND SEDIMENT CONTROL PLAN... 2.5 THE EROSION AND SEDIMENT CONTROL PLAN... 2.6 THE EROSION AND SEDIMENT CONTROL PLAN... 3. GRADING & DRAINAGE 3.1 NEW GRADES TO MATCH EXISTING AT PROPERTY LINE... 3.2 ALL AREAS SHALL BE GRADED TO ENSURE ADEQUATE DRAINAGE... 3.3 WHETHER RESULT OF POOR WORKMANSHIP OR DAMAGE... 3.4 WHETHER RESULT OF POOR WORKMANSHIP OR DAMAGE... 3.5 WHETHER RESULT OF POOR WORKMANSHIP OR DAMAGE... 3.6 WHETHER RESULT OF POOR WORKMANSHIP OR DAMAGE... 3.7 WHETHER RESULT OF POOR WORKMANSHIP OR DAMAGE... 3.8 WHETHER RESULT OF POOR WORKMANSHIP OR DAMAGE... 3.9 WHETHER RESULT OF POOR WORKMANSHIP OR DAMAGE... 3.10 WHETHER RESULT OF POOR WORKMANSHIP OR DAMAGE... 4. SITE SERVICES 4.1 SEWER MAINS SHALL BE PVC SDR-26 FOR AND SHALL CONFORM TO CSA B1822... 4.2 THE INLET CONTROL DEVICES LOCATED IN THE INLET OF STORMWATER DETENTION AREA... 4.3 CLASS 4 SEWAGE SYSTEM: THE PROPOSED CLASS 4 SEWAGE SYSTEM SHALL CONFORM TO... 4.4 PLACE TANK PLUMB AND TRILE TO ALIGN WITH GRADE... 5. CONSTRUCTION 5.1 PRIOR TO COMMENCING WORK: 5.2 COORDINATE AND SCHEDULE WORK WITH THE AUTHORITIES AND SERVICES... 5.3 MAINTAIN AND PROTECT FROM DAMAGE, SERVICES, UTILITIES AND STRUCTURES ENCOUNTERED... 5.4 PROVIDE TRAFFIC CONTROL AND SAFETY MEASURES INCLUDING ANY NECESSARY PERSONNEL AND THE SUPPLY... 5.5 SCHEDULE WORK TO PROVIDE THE MINIMUM DISRUPTION TO SERVICES...